



+44 (0)1691 655150



SKU: CP-NEXT120S

120Kg Brushless Motor for Swing Door w/ Fixing plate

Designed for internal door applications to automate the opening and closing of swing doors up to 120kg.

Specification

Power supply	115 - 230 Vac 50/60 Hz
Max power	40W
Stand-by power	5W
Max weight of the leaf	120kg
Max width of the leaf	1200mm
Max opening angle	110°
Motor	24Vdc brushless motor with encoder
Max load of external accessories	0.5A 24Vdc
Output for electric lock	Relay with N.O. / N.C. contact
IP Rated	IP32
Operating temp	-15°C +50°C
Opening speed (up to 90 °)	Adjustable from 2 to 12s
Closing speed	Adjustable from 4s to 12s
Pause time	Adjustable from 0.5s to 60s
Operation	Spring-powered closing

Product



Dimensions

Height – 60mm
Width – 520mm
Depth – 76mm



+44 (0)1691 655150



SKU: CP-EBJS-01-PTO

Architrave stainless steel push to open plate

Push plate for ease of access

Specification

Operation	Push plate, momentary switch, surface fitting only
Supplied with	High impact plastic backbox
Security screws	Allen key type
Contacts	Double pole NONC contact. Voltage free contacts
Output	4 AMP contact @ 30 V ACDC
Contact resistance	10m OHM (Max)
Internal/external use	Both
Surface	Wear resistant legend
Operating temp	-20° to +60°c
Operating life (mechanical)	1,000,000

Product



Dimensions

Height – 120mm

Width – 50mm

Depth – 47mm



+44 (0)1691 655150



SKU: CP-JMB/KS-3

Three Position Key Switch (hold open/ off/auto) latching

Three Position Key Switch

Specification

Operation	Latching
Supplied with	High impact plastic backbox
Security screws	Allen key type
Contacts	Voltage free contacts
Power	12-24 VDC
IP rated	IP54
Keys	Supplied with 2 keys
Surface	Etched legend

Product



Dimensions

Height – 120mm
Width – 50mm
Depth – 47mm
Weight – (boxed) 250g
Weight – (unboxed) 210g



+44 (0)1691 655150

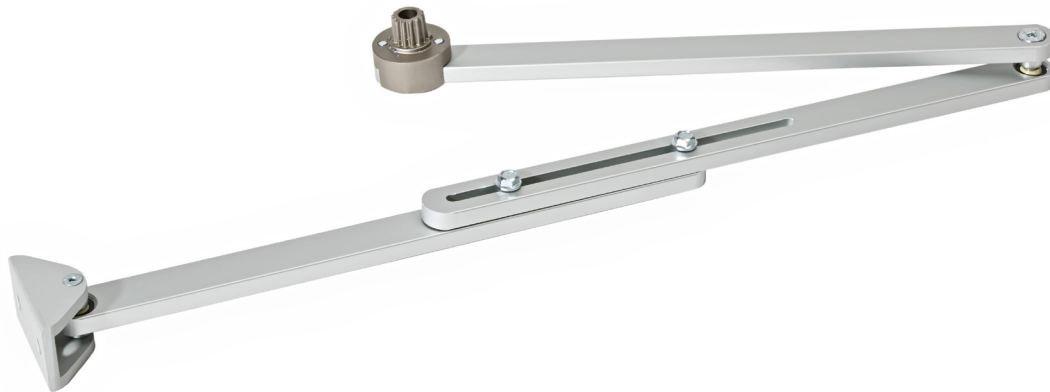


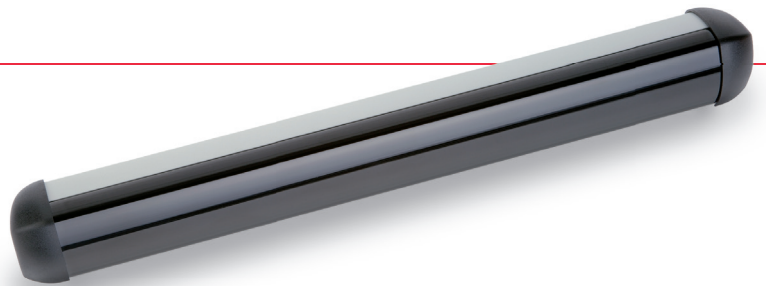
SKU: CP-NEXT120-BAS

Standard Articulated Arm (outswing)

Designed to be used with the CP-NEXT120S motor

Product





UniScan

Infrared presence detector for automatic swing doors and revolving doors in accordance with EN 16005 and DIN 18650

Practical, flexible, slender

- Fully automated starting up:
quick and easy via keystroke
- Automatic mounting height detection:
saves time and facilitates installation
- Top design:
the smallest sensor in its category
- Individually adjustable AIR points:
for perfect adaptation to the local situation

UniScan

Active infrared presence detector for automatic swing doors and revolving doors in accordance with EN 16005 and DIN 18650

Highest level of safety for everyday operation

Safety for every entrance – UniScan provides safety wherever people enter and exit every day. UniScan's dense detection field offers the greatest possible protection, even for small children and people with impaired mobility.

Quick and easy installation

UniScan will convince you not only due to its high level of safety, but it also reduces the installation and start up time. All it takes is one keystroke and the device is taught and set – fully automated. Thanks to its slender and elegant design with small dimensions, the sensor is unobtrusive and can also be used when space is at a premium.



Your advantages

Quick installation and starting up

- Several sensors are simply connected by means of a flat cable



- No tools needed to adjust mechanical settings



- Automatic startup at the push of a button, LED display



Connection with flat cable

Adjustment of detection angle

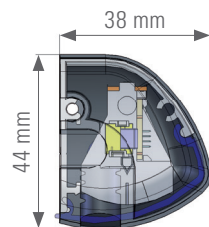
Starting up via keystroke



Universal creation

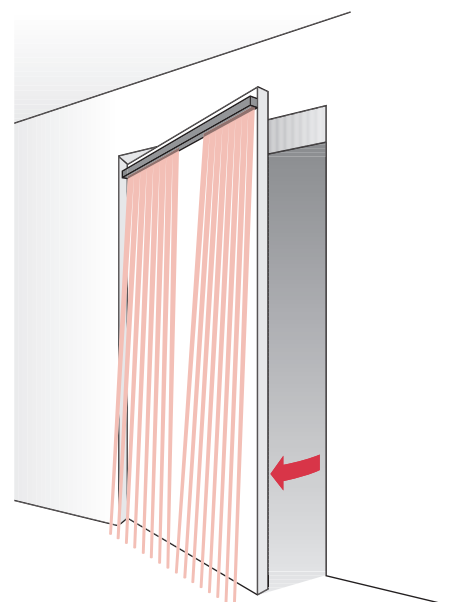
- Testing method can be selected in accordance with the respective drive types
- The detection height above ground can be adjusted between 10 cm and 100 cm
- No interference through synchronisation of the optics
- Individual turning off of single beams

Compact dimensions



Field characteristics for more safety

- Close array of beams (471 x 60 mm at 2.2 m mounting height) with 8 beams and very short reaction time (< 50 ms)
- Mounting height up to 3.0 m
- Power saving mode (DIN 18650-compliant)



Extended accessories



Single components of the UniScan, such as the optical unit US beam and various profiles, are available at all times. An additional remote control enables sensors that have already been installed to be adjusted. The Y-Adapter offers a simple cabling solution with only one cable for two sensors on both sides of the door. The two door loop sets DLP 6 and Door Loop provide a clean connection to the wall.



US beam
Optical unit



RegloBeam 2
Remote control



Y-Adapter
Connection of
two UniScans



Flat cable
Flat cable for
the connection
of US beams



DLP 6 Box
Door loop
set with wall
box



Door Loop
Door loop
set with wall
mounting piece



UniScan door set

Set for security

UniScan is also available as a user-friendly door set.

User-friendly, complete and clear

All components are supplied in a single package: the individual parts are clearly arranged. This provides you with everything you need to secure a door at your fingertips.

Quick installation and startup without tools

The Y-Adapter clips into profile. Thanks to its practical plug-in design, both sides of the door can be connected based on the plug-and-play principle. The profile end covers are also pluggable and can be assembled without tools.



Safety for every application

Situation

Access via a swing door

Solution

- The main and secondary closing edges are monitored on both sides of the door for optimum protection of the entire door swing to avoid collisions
- Due to short reaction time, door movements remain smooth

Advantages

- UniScan perfectly secures all edges
- The matching device for every door: Length and number of sensors can be chosen



Situation

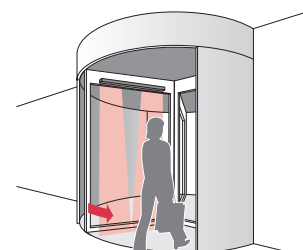
Access via a revolving door

Solution




- An on-board collision protection for revolving doors provides smooth operation and minimises risk of accidents

Advantages

- Persons and objects are detected easily and without contact
- Possible collisions and accidents involving people at the door are thus avoided



Ordering information

Article No.	Description	Sensor / Dimensions	
260012	UniScan I, 350 mm, silver	1	
259970	UniScan I, 350 mm, black	1	
260013	UniScan I, 350 mm, white	1	
256274	UniScan II, 750 mm, silver	2	
256317	UniScan II, 750 mm, black	2	
256296	UniScan II, 750 mm, white	2	
256299	UniScan II, 900 mm, silver	2	
256340	UniScan II, 900 mm, black	2	
256341	UniScan II, 900 mm, white	2	
256859	UniScan II, 1100 mm, silver	2	
256596	UniScan II, 1100 mm, black	2	
256881	UniScan II, 1100 mm, white	2	
257182	UniScan III, 1600 mm, silver	3	
257184	UniScan III, 1600 mm, black	3	
257189	UniScan III, 1600 mm, white	3	
290768	Door set: 2 UniScan II, 1100 mm, silver	2 x 2	
296971	Door set: 2 UniScan II, 1100 mm, black	2 x 2	
296972	Door set: 2 UniScan II, 1100 mm, white	2 x 2	
291030	Door set: 2 UniScan II, 1200 mm, silver	2 x 2	
296973	Door set: 2 UniScan II, 1200 mm, black	2 x 2	
296974	Door set: 2 UniScan II, 1200 mm, white	2 x 2	
256297	US beam Optical unit incl. mounting clips	1	
288879	Y-Adapter		
212354	DLP 6 Box, door loop set Box and door loop tube, length max. 600 mm, inner diameter max. 6 mm, material plastic, colour black		
220535	Door Loop, door loop set Wall adaptor and door loop tube, length max. 600 mm, inner diameter max. 6 mm, material plastic, colour black		
212356	Door Loop, door loop set Wall adaptor and door loop tube, length max. 600 mm, inner diameter max. 6 mm, material metal, colour black		
291082	UniScan cable set Contains Y-Adapter 288879 and door loop set 220535		
213096	Flat cable 500	500 mm	
213097	Flat cable 800	800 mm	
225452	Scan front cover	3350 mm	
219910	Scan silver aluminium profile	3350 mm	
247969	Scan black aluminium profile	3350 mm	
247966	Scan white aluminium profile	3350 mm	
297705	Scan Cap Set black End cover set, black		
297706	Scan Cap Set white End cover set, white		
218810	Holder Beam Universal Mounting clip		
243025	RPT rain cover 17 m roll		
292393	RegloBeam 2 Bidirectional remote control		

Additional products

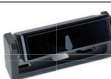
Activates automatic doors

Microwave motion sensor Merkur 2 with electronically adjustable field



Protects primary closing edges in revolving doors

Active infrared sensor SpotScan with detection altitude of up to 3 m



Technical data

Mechanical data

Housing material	Aluminium
Front cover	Plexiglass PMMA (black)
Weight (US beam)	90 g
Measurements (US beam)	300 x 31 x 20 mm
Weight (UniScan II, 1100 mm)	910 g
Type of connection	Plug-in screw terminal

Technological data

Technology	Active infrared (triangulation principle)
Beams	8 per US beam
Power saving mode	5 beams per US beam activated (factory setting)
Mounting height	1.7 – 3.0 m
Field size (at 2.2 m)	471 x 60 mm
Mode of operation	on-board
Reaction time for detection	< 50 ms
Performance Level	PLd, Cat. 2 (EN ISO 13849-1)
Max. number of sensors linked together	4 (with DC supply voltage only)

Electrical data

Supply voltage	15–37 V DC ± 0% 15–26 V AC ± 0%, 50/60 Hz AC only for single device
Making current	Max. 500 mA
Power consumption	Max. 3.3 W (138 mA with 24 V per unit)
Test input	High/Low active, Pull up/Pull down Response time to test signal High level < 30 ms (typical 3 ms) Min. 5 V DC – max. 24 V DC / I = < 6.5 mA
Output	Relay 40 V DC, 40 V AC, 1 A
Relay holding time	0–10 s (adjustable)

Environment conditions

Protection category	IP54 (EN 60529)
Operating temperature	–20°C to +60°C
Atmospheric moisture	Max. 95% relative, non-condensing

Norms

Immission	EN 61000-6-1 EN 61000-6-2
Emission	EN 61000-6-3 EN 61000-6-4
EC type certificate in accordance with	EN 16005 DIN 18650-1 EN 12978 EN ISO 13849-1 EN 61508

Advice

Technical data and recommendations for our products are empirical values and serve as orientation guide for the user. Information given in brochures and data sheets do not guarantee special product characteristics. This does not include special characteristics which, in single cases, we confirm individually or in written form. We reserve the right to make modifications resulting from further technical development.

BBC Bircher Smart Access

Wiesengasse 20
8222 Beringen
Switzerland
Phone +41 52 687 11 11
info@bircher.com
www.bircher.com