

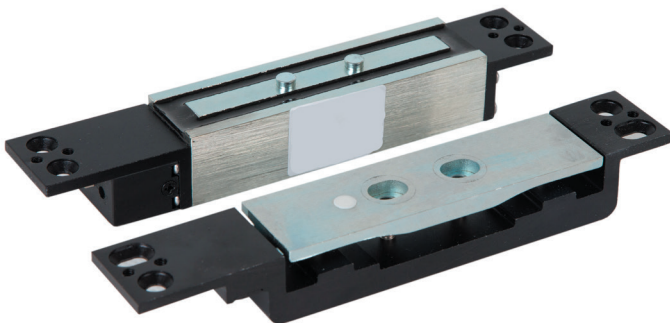
SKU: CP-MSL2600 Shear lock

Shear lock – Automatic repeated locking

Specification

Operating voltage	12V or 24V DC (auto adjusting)
Operating current	220mA @ 12vDC / 190mA @ 24vDC
Operation	Power to lock. Locking by detector plate
Suitable for	Wooden and aluminium doors
Shear force	1200kg/2600lbs
Timer	Door open delay timer
Outputs	Door position outputs

Product



Dimensions

Length – 180mm
Width – 38mm
Depth – 11mm
Weight – 582g