

SKU: CP-DS-004

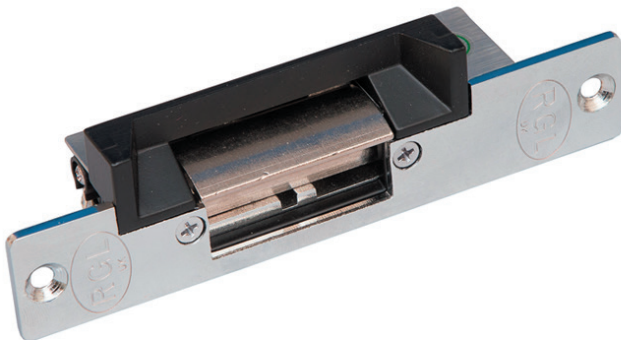
Electric door release fail safe

Use with Access and Door entry systems.

Specification

Kit includes	Mortice face plate only
Operating voltage	12V DC
Current	120mA
Operation	Power to lock
Suitable for	Wooden doors
Holding force	400kg

Product



Dimensions

Length – 150mm
Width – 27/39mm
Depth – 34mm
Weight – 348g