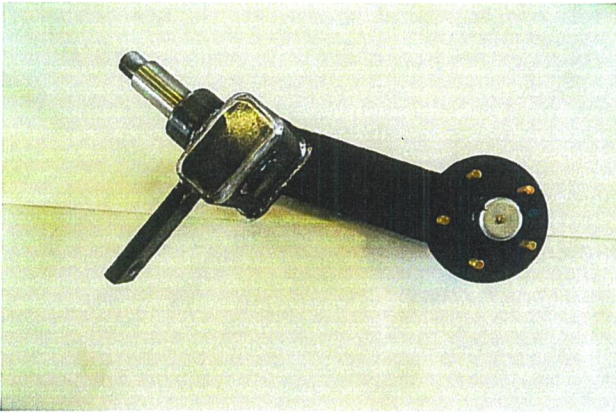
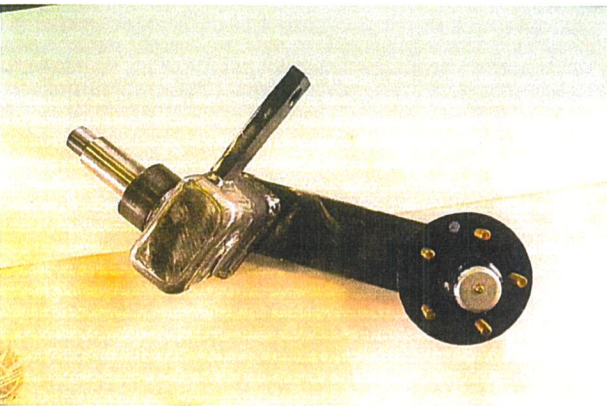


# PARTS LIST

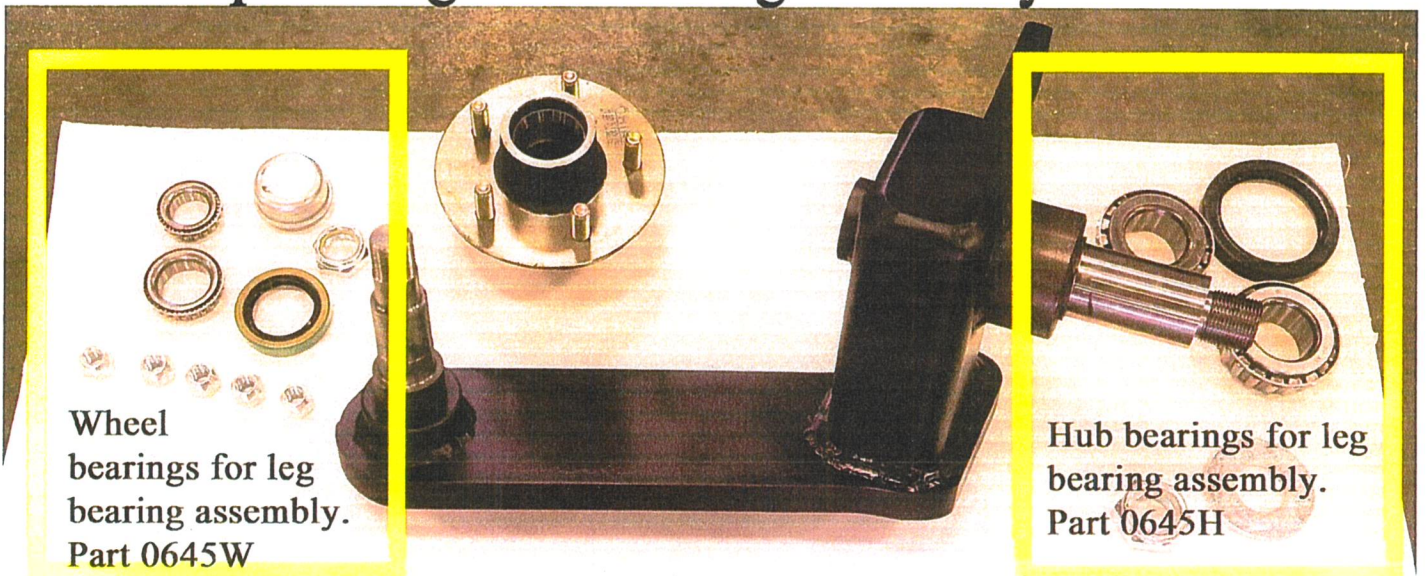


Back Leg Assembly  
Part 0539



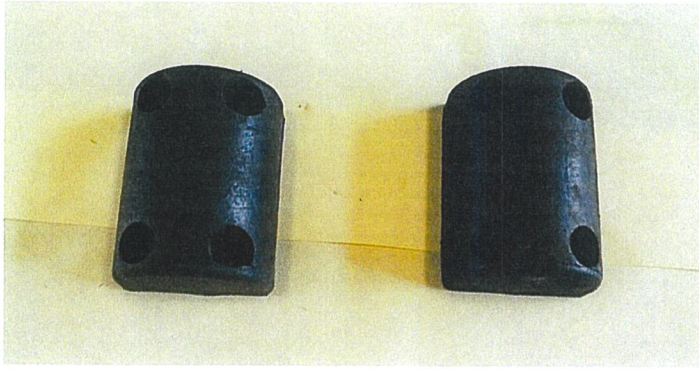
Front Leg Assembly  
Part 0538

## Complete leg and bearing assembly Part 0645

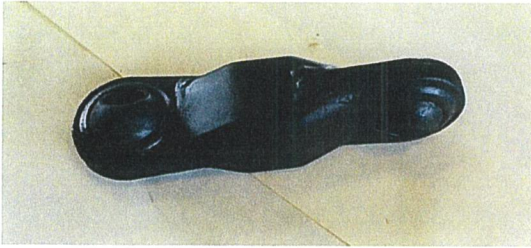


Wheel bearings for leg bearing assembly.  
Part 0645W

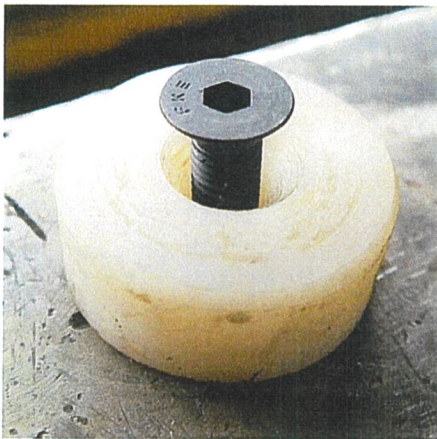
Hub bearings for leg bearing assembly.  
Part 0645H



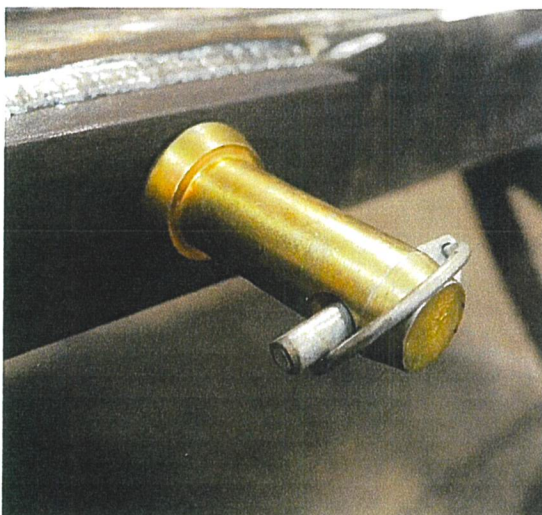
**Bumpers  
Part 0540**



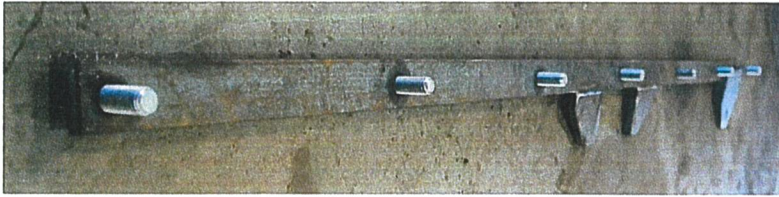
**Hitch connecting link  
Part 0541**



**Nylon Hitch bumper  
Part 0654**



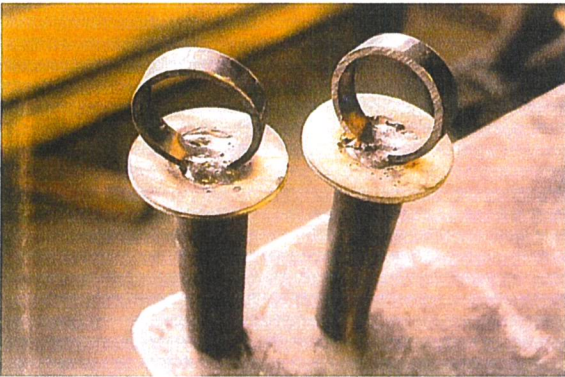
**Stabilizer pin  
Part 0658**



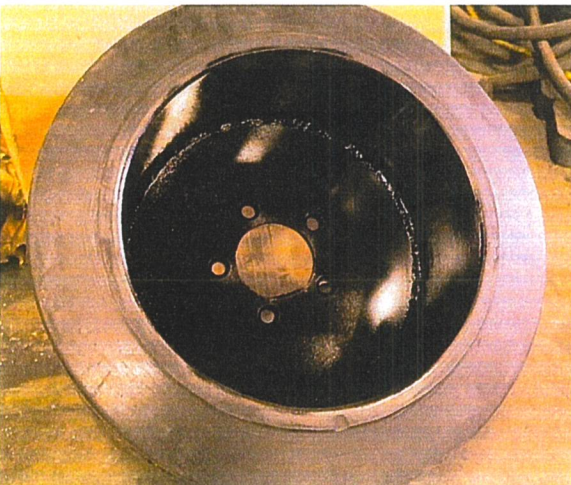
Front tie rod  
Part 0647



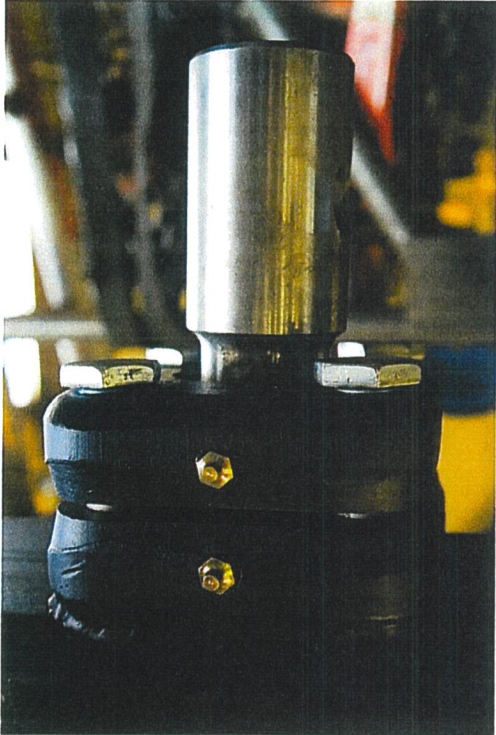
Back tie rod  
Part 0648



Tie rod lock pins  
Part 0653

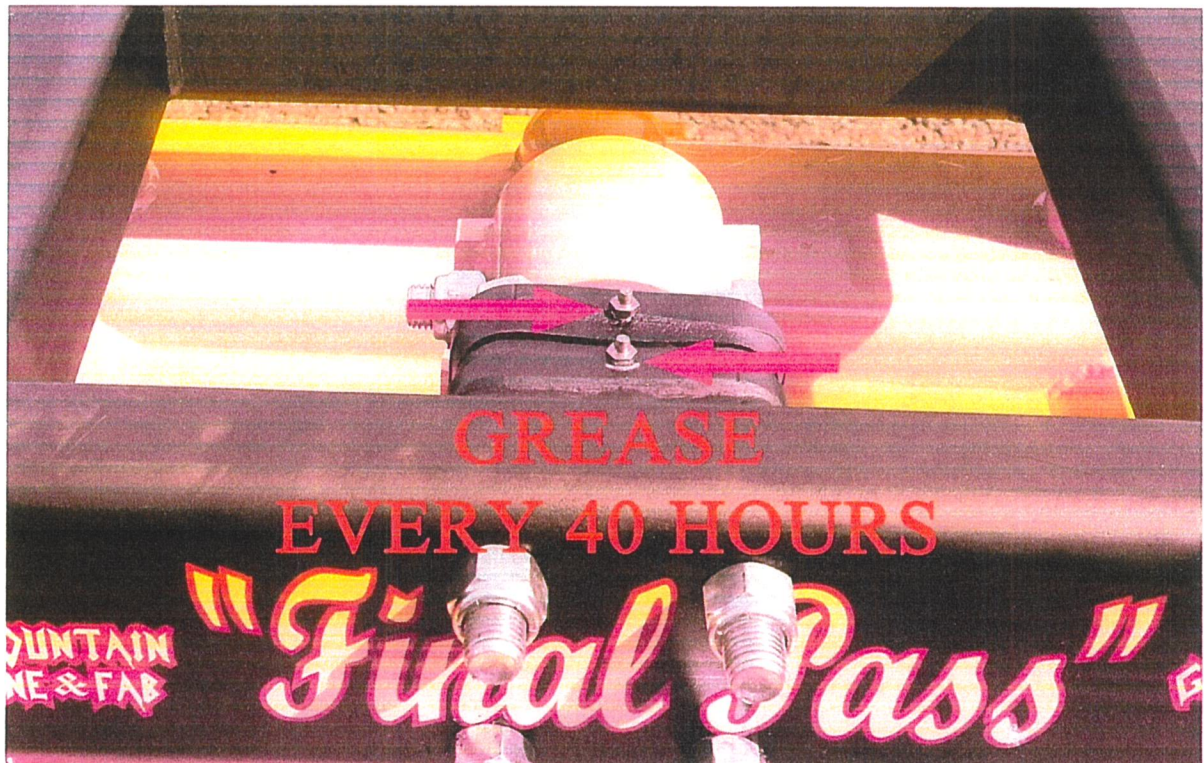
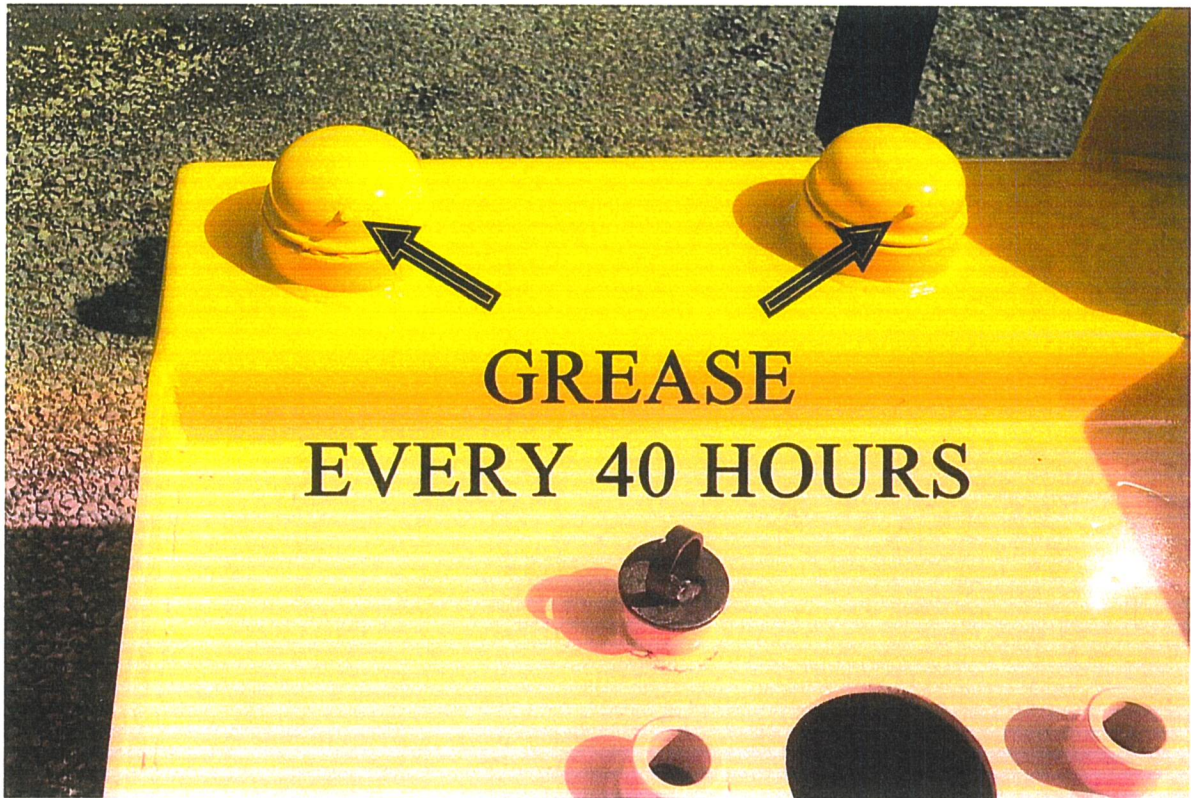


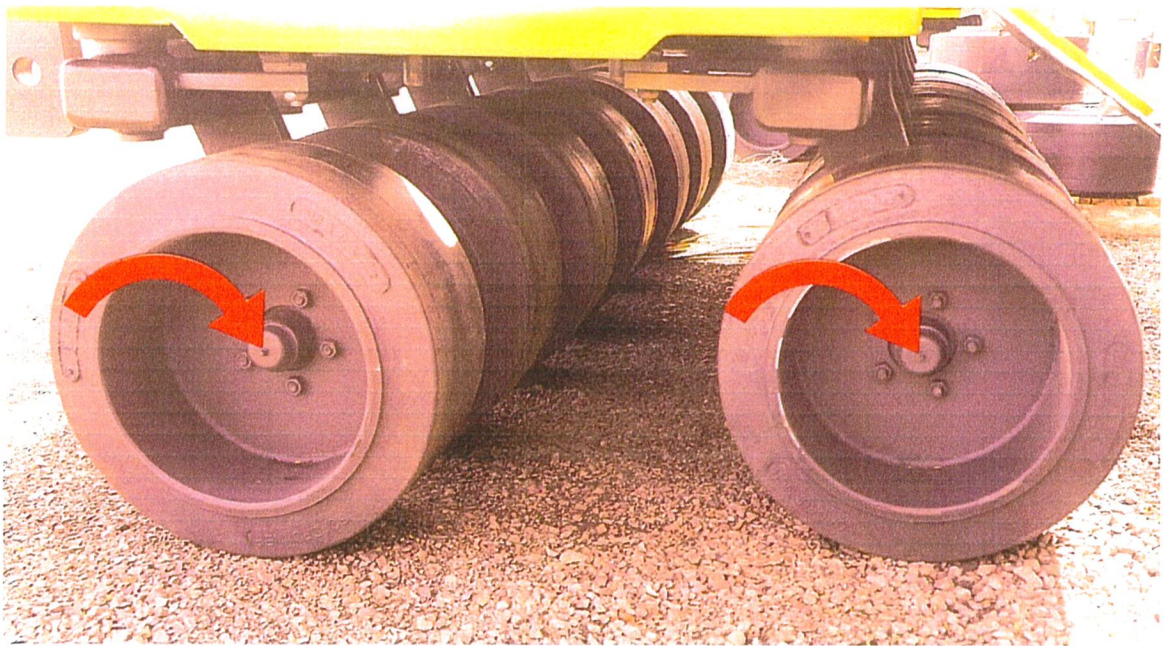
Solid rubber wheel  
Part 0644

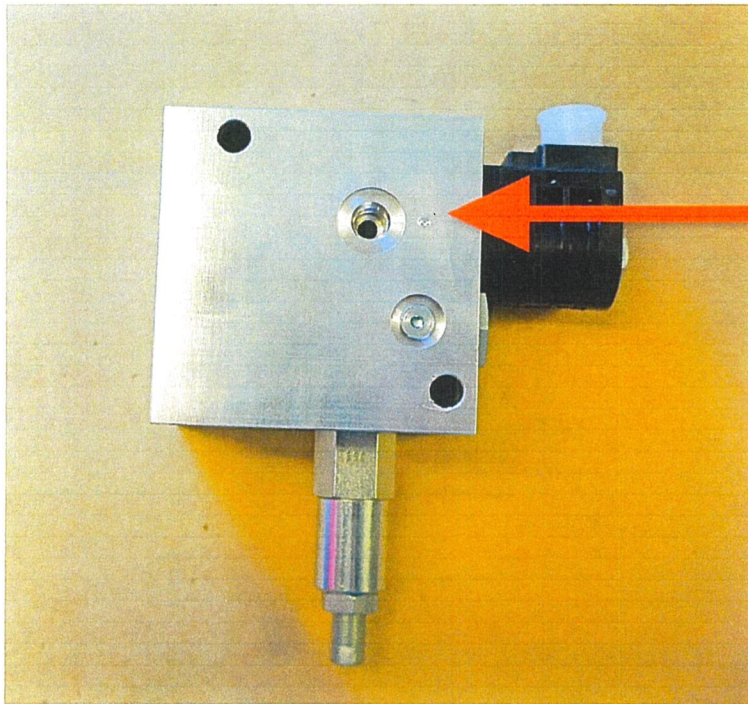


Swivel pin assembly  
Part 0649

# MAINTENANCE

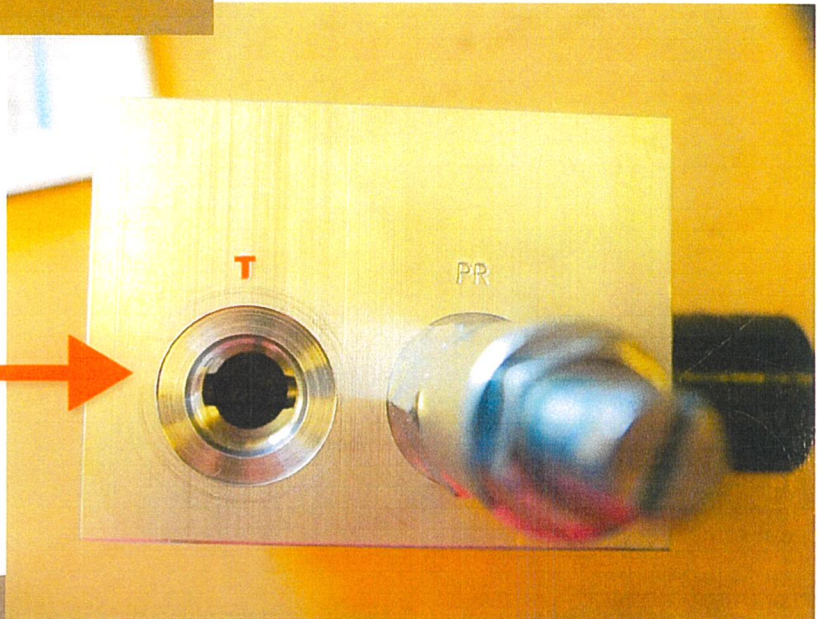






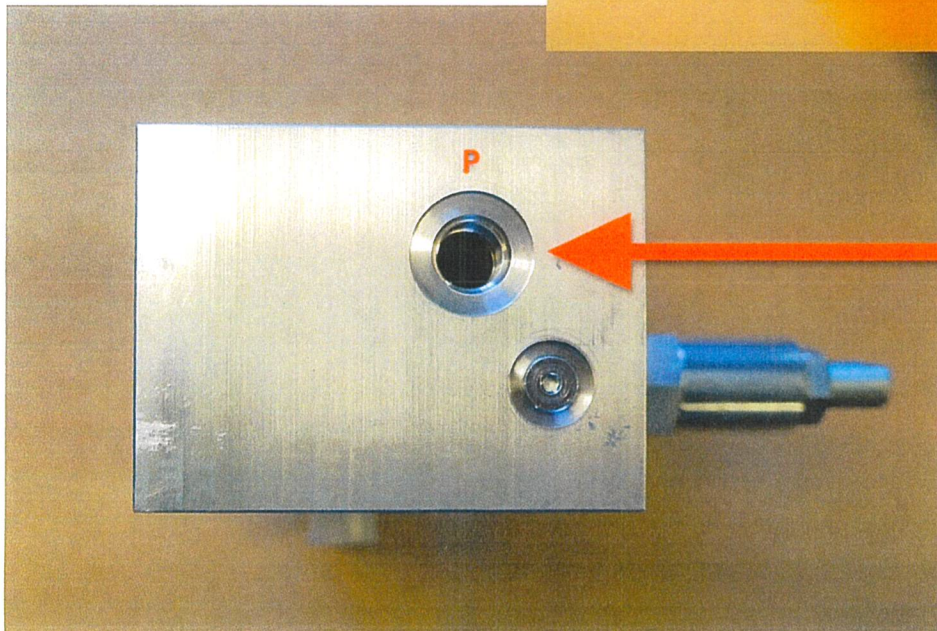
**Gauge port**

**Set pressure at 400 psi, then cap hole**



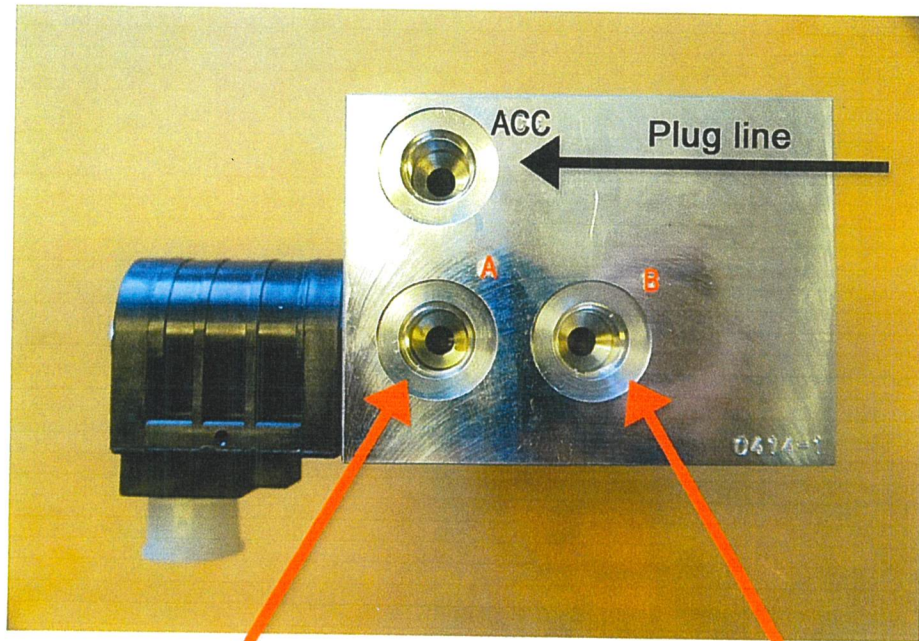
**Tank return**

**Needs to return to tank open line.**



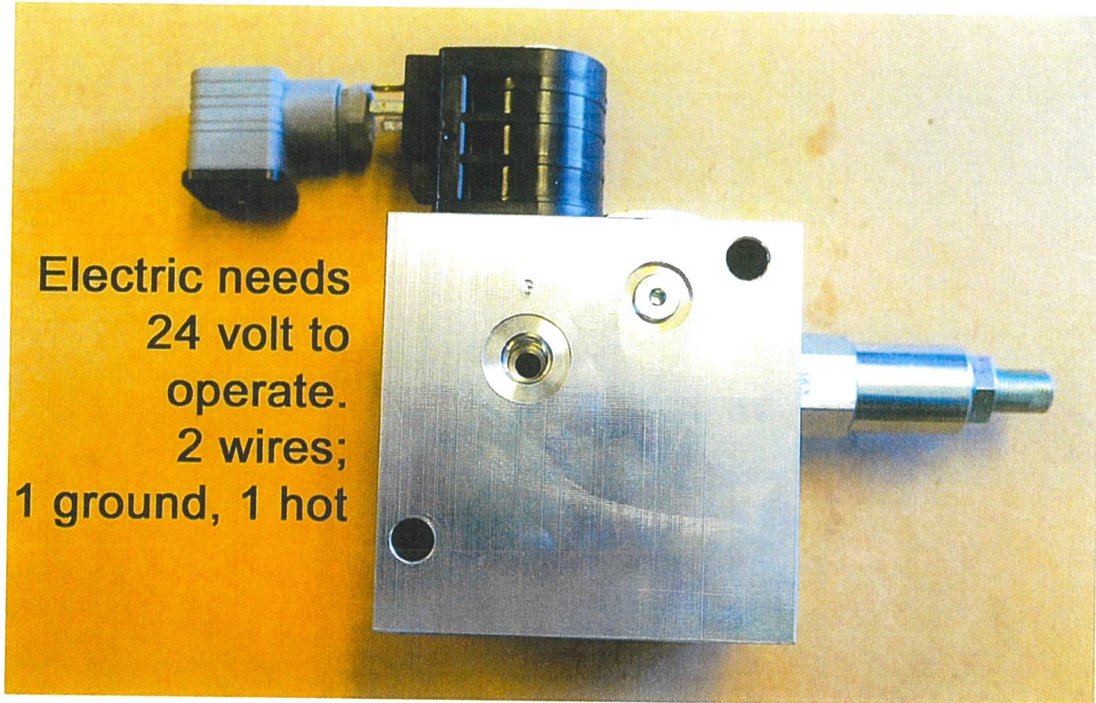
**Pressure line**

**in to run valve.**



A port  
lift side  
cylinder

B port  
lower side  
cylinder





Equipment Blades  
Phone 605 368 5221  
Fax 605 368 9714

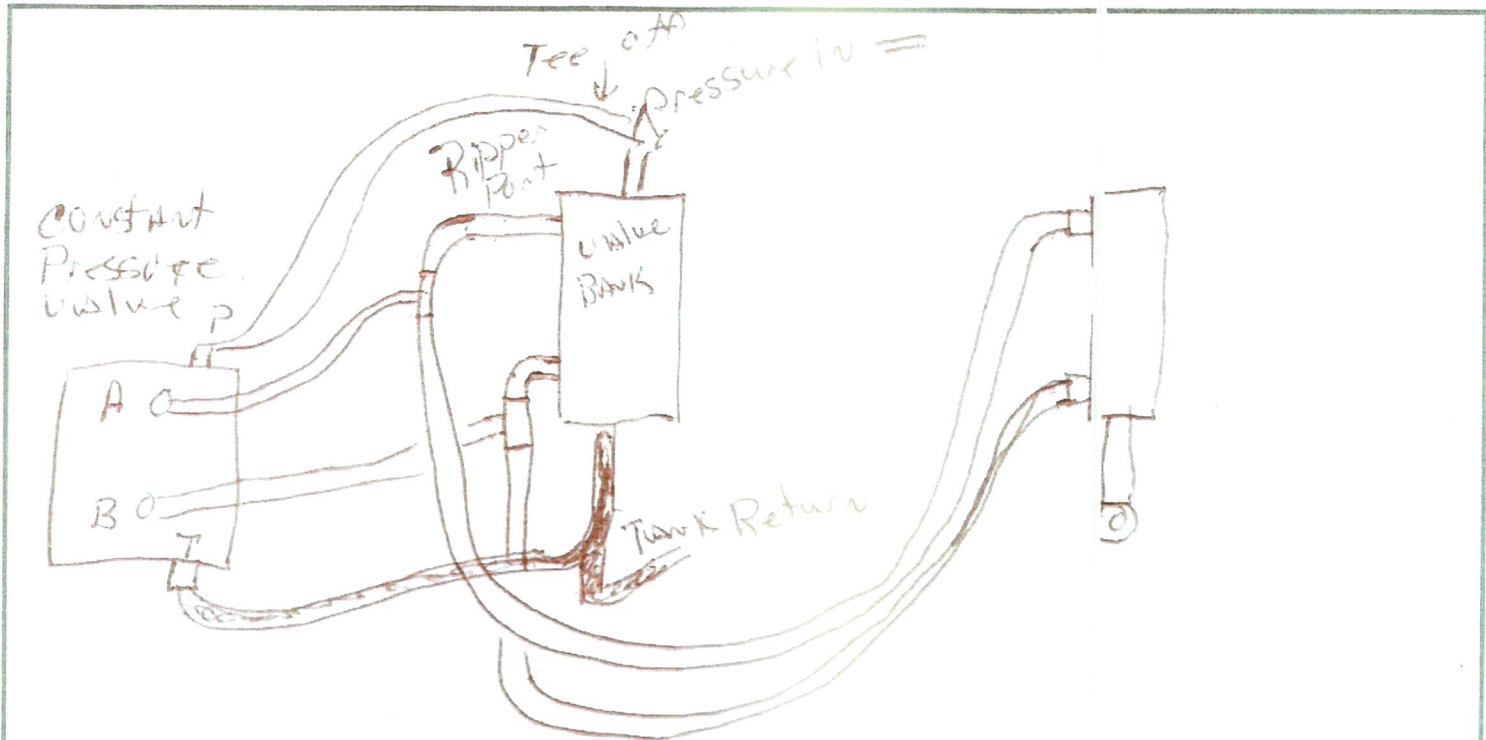
TO THE ATTENTION OF:

541-506-2641

PHONE 509-535-0657

800-541-6354

----- *Machine* -----  
Company) P.O. / Job No.  
-----  
Your Name Date Phone FAX No.  
-----



Tee off go to pressure part  
Tee off Tank Return

Ripper Valve Top goes to A  
Bottom goes to B

Tee off lines heading to cyl.

Intermountain Machine and Fabrication, Inc.  
P.O. Box 148  
Cottonwood, Idaho 83522  
208-983-0240  
email at: Intermachine@msn.com

## Intermountain Machine and Fabrication, Inc.

### FINAL PASS SERIES II PACKER

Specifications



**WEIGHT 3500 Lbs**

**8 ft. wide x 5 ft. 6 inches long**

**13 – Hard Rubber Tires Mounted on 3500# Spindles  
(All Tires Pivot by Tie Rod Assembly)**

**Drops in Ripper Shank Pockets for Install**

**All Bearings Sealed and Greasable**

**All Parts Common off the Shelf Components**

**Accessories: Constant Pressure Value  
(Kit Contains all Parts to Install on Grader Hydraulics)**

**Labor to Install Kit – Approx 8 Hrs.**

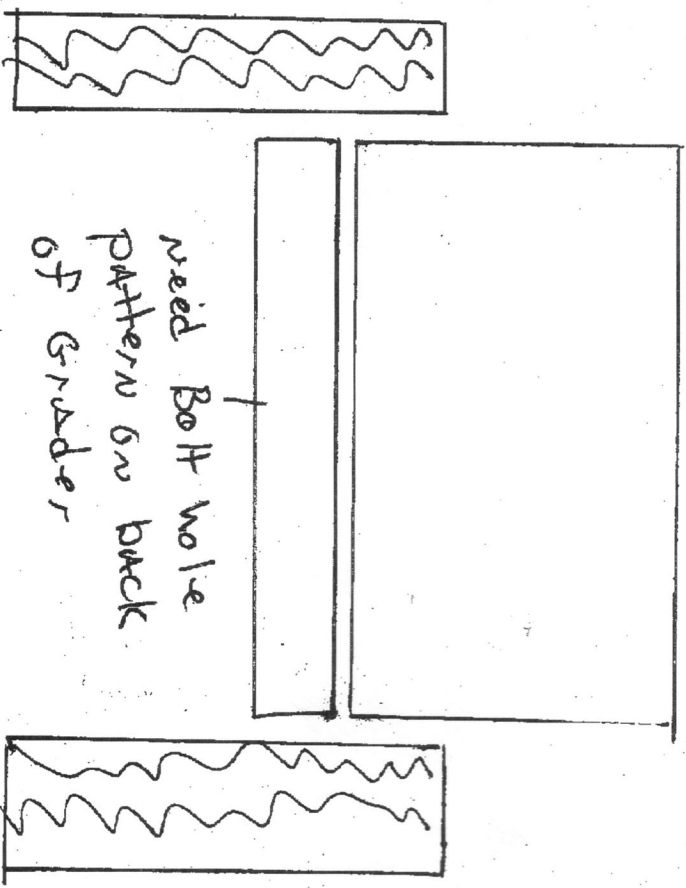
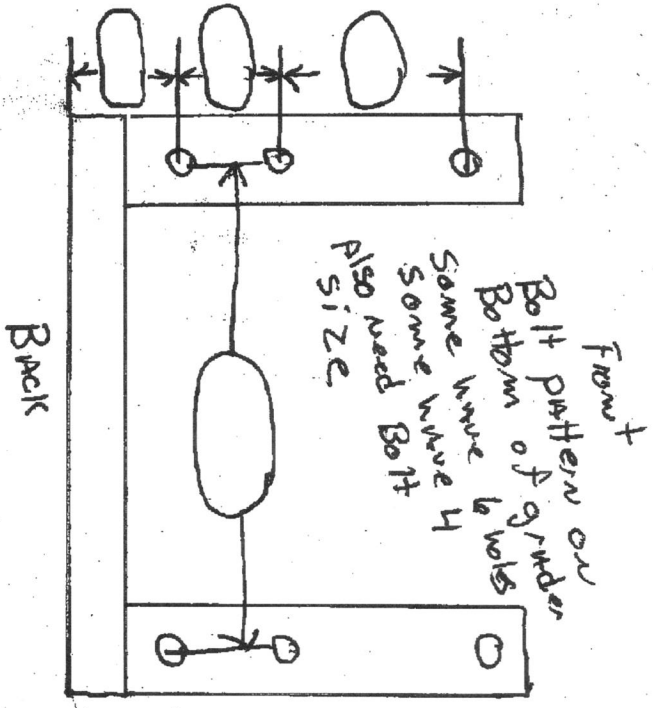
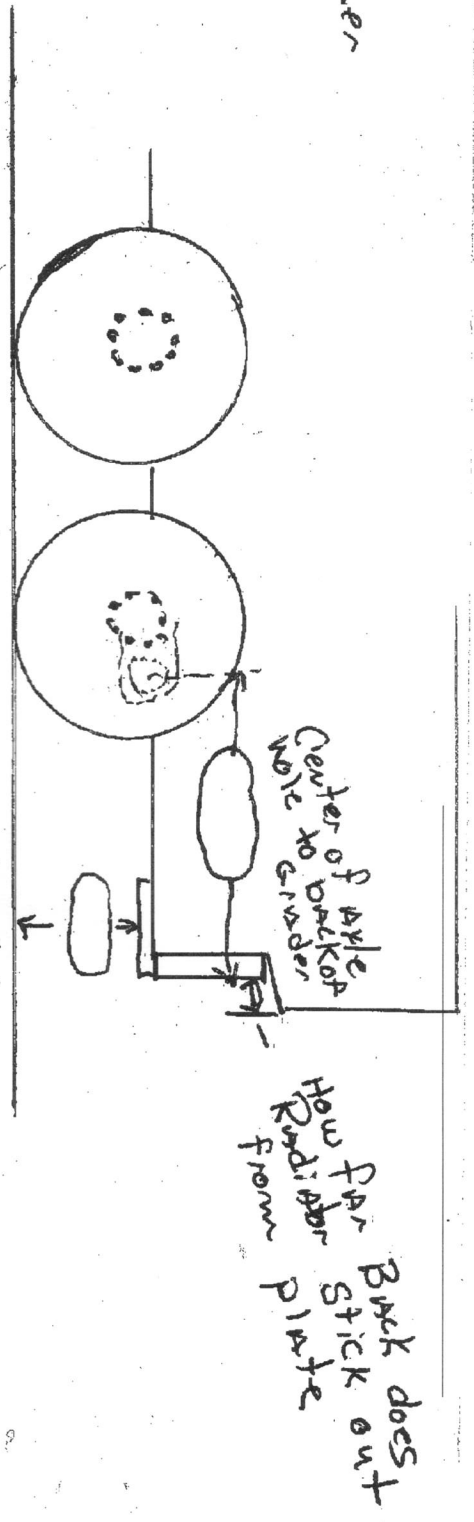
**REDUCE YOUR ROAD MAINTENANCE COSTS BY UP TO 40% WITH FINAL PASS II**

- **LOWER EQUIPMENT COSTS** and reduce man and machine hours by eliminating a piece of equipment and the person to operate it
- **ELIMINATE ADDITIONAL FUEL** required to transport the extra piece of equipment as well as operation of the roller itself
- **REDUCE WASHBOARDING, POTHOLES, EDGE COSTS, AND WASHOUTS** because you grade and compact in the same operation
- **IMPROVE MOISTURE SHED** by compacting immediately after grading

View demo at hyperlink below:

<http://www.imtnmachfab.com>

Any Questions  
please call!  
Roy Seunmacker  
208-983-0290



# INTERMOUNTAIN MACHINE & FABRICATION, INC.

1087 HWY 13 GRANGEVILLE, ID 83530

PH: (208) 983-0240 FAX: (208) 983-1585

INTERMACHINE@MSN.COM

## WARRANTY INFORMATION FOR IMFI FINAL PASS II

Intermountain Machine warrants the following for a period of 1 (one) year:

- Frame
- Welded components
- Hitches
- Wheel assemblies

All bearings, seals and moving parts are covered for 30 days providing all proper maintenance and service are conducted.

Abuse, misuse, or operator error voids all warranties and liability of Intermountain Machine & Fabrication, Inc.