

STEP BY STEP

Designed by Ariga Mahmoudlou for RK Featuring
www.robertkaufman.com

fusions | *Bushweak* 



Finished quilt measures: 51" x 62-1/2"







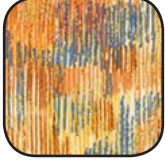
Difficulty Rating: **Beginner**

ROBERTKAUFMAN
F A B R I C S

For questions about this pattern, please email Patterns@RobertKaufman.com.

Fabric and Supplies Needed

Fabric amounts based on yardage that is 42" wide.

Color	Fabric	Name/SKU	Yardage	Color	Fabric	Name/SKU	Yardage
	A	SRKP-16687-357 TITANIUM	1-1/4 yard		E	SRKM-18059-333 SEA GLASS	1/2 yard
	B	K001-1243 NAVY	7/8 yard		F	SRKM-18059-62 INDIGO	1/2 yard
	C	SRKM-18059-184 CHARCOAL	1/2 yard		Binding*	K001-1243 NAVY <i>*Also used for Fabric B</i>	1/2 yard
	D	SRKM-18059-133 GOLD	1/2 yard	You will also need: 3-3/8 yards for backing			

Copyright 2018, Robert Kaufman
For individual use only - Not for resale

Notes Before You Begin

- Read through all of the instructions before beginning.
- All of the seam allowances are 1/4" unless otherwise noted.
- Press seam allowances open unless otherwise noted.
- Width of fabric (WOF) is equal to at least 42" wide.
- Right sides together has been abbreviated to RST.
- Remember to measure twice and cut once!

Cutting Instructions

From Fabric A, cut:

nine 4-1/2" x WOF strips. Set eight strips aside for strip piecing. From the remaining strip, subcut:

eight 4-1/2" squares.

From Fabric B, cut:

three 4-1/2" x WOF strips. Set two strips aside for strip piecing. From the remaining strip, subcut:

two 4-1/2" squares.

six 2-1/2" x WOF strips. Set aside for the outer border.

From Fabric C, cut:

three 4-1/2" x WOF strips. Set two strips aside for strip piecing. From the remaining strip, subcut:

two 4-1/2" squares.

From Fabric D, cut:

three 4-1/2" x WOF strips. Set two strips aside for strip piecing. From the remaining strip, subcut:

two 4-1/2" squares.

From Fabric E, cut:

three 4-1/2" x WOF strips. Set two strips aside for strip piecing. From the remaining strip, subcut:

two 4-1/2" squares.

From Fabric F, cut:

three 4-1/2" x WOF strips. Set two strips aside for strip piecing. From the remaining strip, subcut:

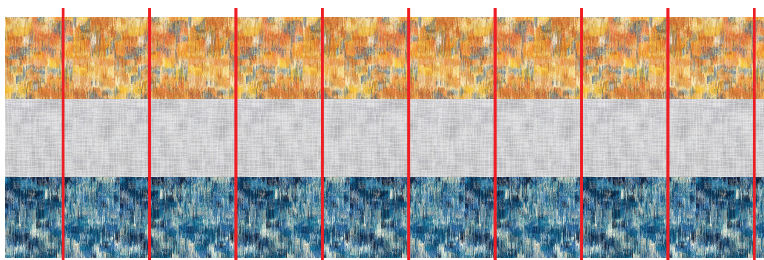
two 4-1/2" squares.

From the Binding Fabric, cut:

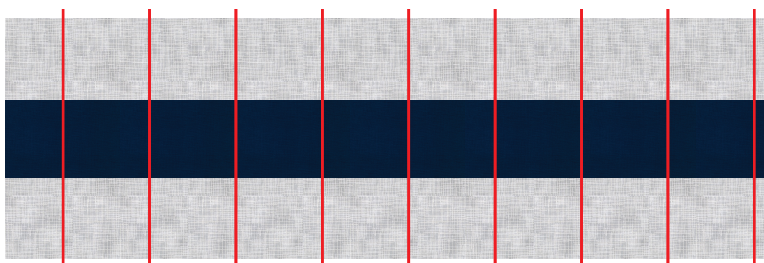
six 2-1/2" x WOF strips

Assemble the Blocks

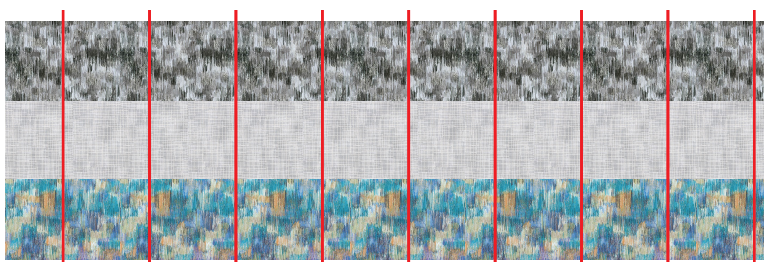
Step 1: Make a strip set by sewing a Fabric D, Fabric A and Fabric F strip together, in that order, along the longest edge. Press toward Fabric A. Repeat to make a second strip set like this, then subcut the strip sets into a total of eighteen 4-1/2" x 12-1/2" D/A/F units.



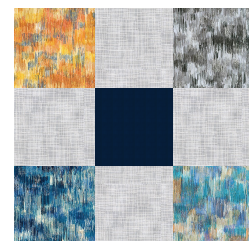
Step 2: Make a strip set by sewing a Fabric A, Fabric B and Fabric A strip together, in that order, along the longest edge. Press toward Fabric A. Repeat to make a second strip set like this, then subcut the strip sets into a total of eighteen 4-1/2" x 12-1/2" A/B/A units.



Step 3: Make a strip set by sewing a Fabric C, Fabric A and Fabric E strip together, in that order, along the longest edge. Press toward Fabric A. Repeat to make a second strip set like this, then subcut the strip sets into a total of eighteen 4-1/2" x 12-1/2" C/A/E units.

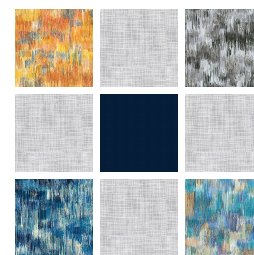


Step 4: Gather one of each type of unit and sew together as shown, nesting the seams and pressing the row seams to one side. The resulting nine-patch block will measure 12-1/2" square. Repeat to make eighteen nine-patch blocks.



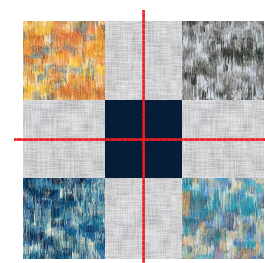
Step 5: Gather:
 one 4-1/2" square each of Fabrics B-F
 four 4-1/2" squares of Fabric A

Arrange in three rows of three to make a nine-patch block, with fabric placement identical to those in Step 4. Sew the squares together to form rows, pressing the seams toward Fabric A. Sew the rows together to form a block, nesting the seams and pressing the rows seams to one side. Repeat to make a second nine-patch block with the remaining 4-1/2" squares.

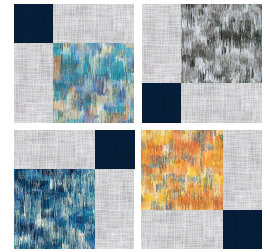


You will now have a total of twenty nine-patch blocks.

Step 6: Place one nine-patch block on a cutting mat and cut the block through the vertical and horizontal centers.



Step 7: Arrange the four cut units from Step 6 as shown, then sew together in two rows of two. Press the seams in opposite directions in each row, then nest the seams and sew the rows together. Press. The resulting block should measure 12" square.



Step 8: Repeat Steps 6 and 7 to make a total of twenty 12" disappearing nine-patch blocks.

Assemble the Quilt



Step 9: Arrange the blocks into five rows of four blocks. Note the fabric placement and block orientation in the Quilt Assembly Diagram.

Step 10: Sew the blocks together to form rows. Press the rows to the left in the odd numbered rows and to the right in the even numbered rows.

Step 11: Sew the rows together to form the quilt center. Press the row seams open.

Step 12: Sew the Fabric B outer border strips together, end-to-end. Measure the width of the quilt through the center. Cut two Fabric B top/bottom outer border strips to this length. Sew the borders to the top/bottom of the quilt center. Press toward the border. Measure the length of the quilt through the center. Cut two side outer border strips to this length. Sew the borders to the sides of the quilt center. Press toward the border.

Your quilt top is now complete. Baste, quilt, bind and enjoy!