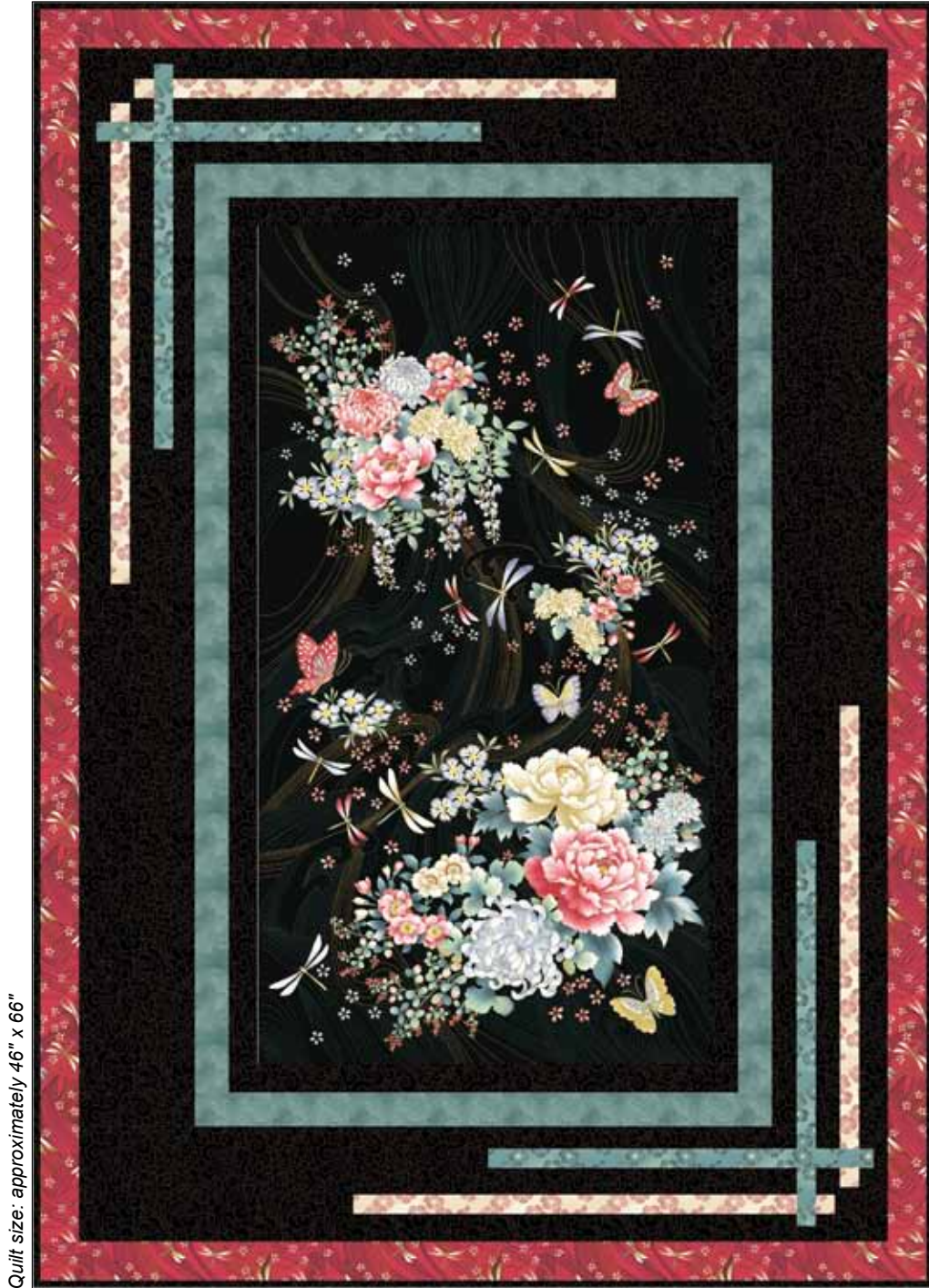


# Niwa

Quilt Design by Gina Gempesaw



Quilt size: approximately 46" x 66"



Featuring fabrics from  
Niwa by P&B Textiles

# Niwa

Fabric collection by P&B Textiles

Quilt designed by Gina Gempesaw

Skill level: Advanced Beginner • Finished Quilt Size: approximately 46" x 66"

## Quilt Yardages:

Fabric A: <b>NIWA 4384 PA</b> .....	1 panel
Fabric B: <b>NIWA 4389 K</b> .....	1 2/3 yards
Fabric C: <b>NIWA 4387 R</b> .....	1/2 yard
Fabric D: <b>NIWA 4388 LP</b> .....	1/4 yard
Fabric E: <b>NIWA 4388 T</b> .....	1/4 yard
Fabric F: <b>SUEM 300 BG</b> .....	1/3 yard
Backing: <b>NIWA 4385 K suggested</b> .....	3 yards
Batting.....	54" x 74"

Additional supplies: paper-backed fusible web

## Cutting Instructions:

*Please read all instructions carefully before beginning. Strips are cut across the width of fabric (perpendicular to selvages) unless otherwise stated. All seams are sewn with a 1/4" seam unless otherwise stated. Label all pieces.*

### From Fabric A:

1. Fussy-cut one 24" x 44" panel, centering image (A1).

### From Fabric B:

1. Cut five 6 1/2" strips. Sew strips together into one strip.
  - a. Cut two 6 1/2" x 50 1/2" Border strips (B1).
  - b. Cut two 6 1/2" x 42 1/2" Border strips (B2).
2. Cut four 2" strips. Sew strips together into one strip.
  - a. Cut two 2" x 44" Border strips (B4).
  - b. Cut two 2" x 27" Border strips (B3).
3. Cut six 2 1/4" x WOF strips for binding (B5).

### From Fabric C:

1. Cut six 2 1/2" strips. Sew strips together into one strip.
  - a. Cut two 2 1/2" x 62 1/2" Border strips (C1).
  - b. Cut two 2 1/2" x 46 1/2" Border strips (C2).

### From Fabric D:

1. Cut one 7" x 27" rectangle. Apply paper-backed fusible to the wrong side of the rectangle. Sub cut four 1 1/2" x 25 1/2" strips (D1) for appliqué.

### From Fabric E:

1. Cut one 7" x 22" rectangle. Apply paper-backed fusible to the wrong side of the rectangle. Sub cut four 1 1/2" x 20 1/2" strips (E1) for appliqué.

### From Fabric F:

1. Cut four 2 1/4" strips. Sew strips together into one strip.
  - a. Cut two 2 1/4" x 47" Border strips (F1).
  - b. Cut two 2 1/4" x 30 1/2" Border strips (F2).

## Piecing Instructions:

1. **First Border:** Sew a B4 strip to opposite sides of the A1 image.
2. Sew a B3 strip to the remaining sides of the A1 image to complete the quilt center. The quilt center should measure 27" x 47" at this point.
3. **Second Border:** Sew an F1 strip to opposite sides of the quilt center.
4. Sew an F2 strip to the top and bottom of the quilt center.
5. **Third Border:** Sew a B1 strip to opposite sides of the quilt center.
6. Sew a B2 strip to the top and bottom of the quilt center.
7. **Fourth Border:** Sew a C1 strip to opposite sides of the quilt center.
8. Sew a C2 strip to the top and bottom of the quilt center.
9. Referring to the quilt picture and layout, place two D1 and two E1 strips on the top left and bottom right of the Third Border.
10. Fuse strips in place and applique with your favorite method.

## Finishing:

1. Prepare backing with one seam to measure 54" x 74". Press seam open.
2. Layer quilt top, batting, and backing. Baste layers together.
3. Quilt as desired.
4. Trim layers even with quilt top squaring corners.
5. Join 2 1/4" B5 binding strips with diagonal seams. Press seams open. Press strip in half lengthwise with wrong sides together to make double-fold binding. Attach binding to quilt using your favorite method.
6. Make a label and sew to the back of the quilt.





*Quilt Diagrams*



# Niwa

Fabric Collection by P&B Textiles



NIWA 4384 PA\*



NIWA 4385 K†



NIWA 4386 K



NIWA 4385 MU



NIWA 4386 MU



NIWA 4387 K



NIWA 4387 MU



NIWA 4387 R\*



NIWA 4388 AU



NIWA 4388 LB



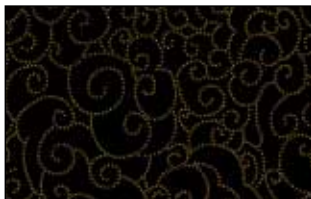
NIWA 4388 LP\*



NIWA 4388 T\*



NIWA 4389 E



NIWA 4389 K\*



NIWA 4389 R



SUEM 300 BG\*



P&B Textiles • pbtex.com • 800-351-9087 • 208 Clock Tower Square, Portsmouth, RI 02871

\*Fabrics used in quilt.

†Backing