

Tsuru

Quilt Design by Cyndi Hershey



Quilt size: approximately 56" x 68"

Featuring fabrics from
Tsuru by P&B Textiles



P&B Textiles • pbtex.com • 800-351-9087 • 208 Clock Tower Square, Portsmouth, RI 02871

Tsuru

Fabric collection by P&B Textiles
Quilt designed by Cyndi Hershey

Skill level: Confident Beginner • Finished Quilt Size: approximately 56" x 68"

Quilt Yardages:

Fabric A: TSUR 5257 K	1 1/2 yards
Fabric B: TSUR 5258 K	5/8 yard
Fabric C: TSUR 5262 E	1 1/4 yards
Fabric D: TSUR 5263 K	2 yards
Fabric E: TSUR 5263 R	5/8 yard
Backing: TSUR 5261 R suggested	3 5/8 yards
Batting	64" x 76"

Cutting Instructions:

Please read all instructions carefully before beginning. Strips are cut across the width of fabric (perpendicular to selvages) unless otherwise stated. All seams are sewn with a 1/4" seam unless otherwise stated. Label all pieces.

From Fabric A:

1. Cut four 10 1/2" strips; subcut ten 10 1/2" squares.
Note: If you would like to cut from a specific area of the fabric to highlight motifs (fussy cutting), cut a 10 1/2" square of template plastic. Center square over the desired areas then trace and cut the fabric squares.
(Alternate Block)

From Fabric B:

1. Cut two 5 1/2" strips; subcut ten 5 1/2" squares.
Note: If preferred, follow the process detailed in Step 1 for "fussy cutting" using a 5 1/2" square of template plastic.
(Framed Block)

From Fabric C:

1. Cut twelve 1 1/2" strips. Sew strips together end to end with diagonal seams. Trim seams to 1/4" and press open. From this pieced strip, cut two 1 1/2" x 48" strips and two 1 1/2" x 59 1/2" strips (1st Border). From remainder of strip, cut two 1 1/2" x 54" strips and two 1 1/2" x 65 1/2" strips. (3rd Border)
2. Cut ten 2" strips. Using seven strips, cut three 2" x 10 1/2" rectangles and one 2" x 7 1/2" rectangle from each strip. From the remaining three strips, cut thirteen 2" x 7 1/2" rectangles. (Framed Block)

From Fabric D:

1. Cut seventeen 2" strips; subcut forty-nine 2" x 10 1/2" rectangles. (Sashing)
2. Cut six 2 1/2" strips. Sew strips together end to end with diagonal seams. Trim seams to 1/4" and press open. From this pieced strip, cut two 2 1/2" x 50" strips and two 2 1/2" x 61 1/2" strips. (2nd Border)
3. Cut seven 2 1/2" strips. (Binding)

From Fabric E:

1. Cut seven 1 1/2" strips; subcut twenty 1 1/2" x 5 1/2" rectangles and twenty 1 1/2" x 7 1/2" rectangles (Framed

- Blocks). From remainder of strips, cut eight 1 1/2" squares (1st & 3rd Border Cornerstones)
2. Cut one 2" strip; subcut twenty 2" squares. (Sashing Squares)
3. Cut one 2 1/2" strip; subcut four 2 1/2" squares (2nd Border Cornerstones. Use the remainder of strip to cut ten 2" squares. (Sashing Squares)

Piecing Instructions:

1. Sew one 1 1/2" x 5 1/2" E rectangle to both sides of one 5 1/2" B square. Sew one 1 1/2" x 7 1/2" E rectangle to the top and bottom of the square.
2. Sew one 2" x 7 1/2" C rectangle to both sides of the Step 1 unit. Sew one 2" x 10 1/2" C rectangle to the top and bottom of the unit to complete one Framed Block. Repeat Steps 1 & 2 to make ten blocks. (Figure 1)

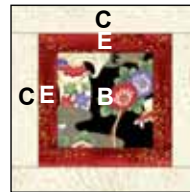


Figure 1

Make 10.
10 1 1/2" x 10 1/2"
unfinished.

3. Referring to Quilt Diagram for correct placement, sew two Framed Blocks, two 10 1/2" A squares, and five 2" x 10 1/2" D rectangles to make one row. Press toward the D rectangles. Make three rows that begin with Framed Blocks and two rows that begin with the A squares.
4. Sew four 2" x 10 1/2" D rectangles alternate with five 2" E squares to make one horizontal sashing row. Press toward the D rectangles. Repeat to make six rows.
5. Referring to Quilt Diagram for correct placement, sew Sashing Rows alternately with Block Rows. Press toward the Sashing Rows.
6. Sew one 1 1/2" x 59 1/2" C strip to both sides of Quilt Center. Press toward the C strips. Sew one 1 1/2" E square to both ends of both 1 1/2" x 48" C strips. Press toward the C strips. Sew one pieced strip to the top and bottom of the Quilt Center. Press toward the C strips.
7. Sew one 2 1/2" x 61 1/2" D strip to both sides of Quilt Center. Press toward the D strips. Sew one 2 1/2" E square to both ends of both 2 1/2" x 50" D strips. Press toward the D strips. Sew one pieced strip to the top and bottom of the Quilt Center.
8. Sew one 1 1/2" x 65 1/2" C strip to both sides of Quilt Center. Press toward the C strips. Sew one 1 1/2" E square to both ends of both 1 1/2" x 54" C strips. Press toward the C strips. Sew one pieced strip to the top and bottom of the Quilt Center.

Finishing:

1. Prepare backing using two widths and horizontal seam/s. Press seams open and trim to 64" x 76".
2. Layer quilt, batting, and backing. Baste layers together.
3. Quilt as desired.
4. Trim layers even with quilt top, squaring corners.
5. Join seven 2 1/2" D binding strips with diagonal seams. Press seams open. Attach binding using your favorite method.
6. Make a label and sew to the back of the quilt.



Quilt Diagram

Tsuru

Fabric Collection by P&B Textiles



TSUR 5256 PA



TSUR 5257 K*



TSUR 5258 K*



TSUR 5259 K



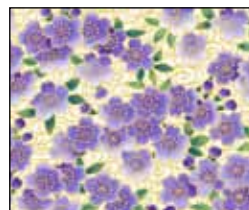
TSUR 5260 E



TSUR 5260 G



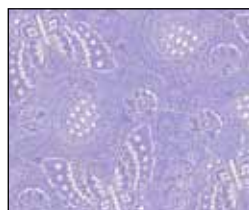
TSUR 5260 K



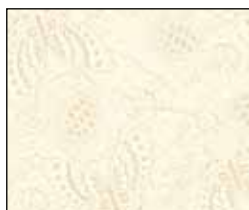
TSUR 5261 C



TSUR 5261 R†



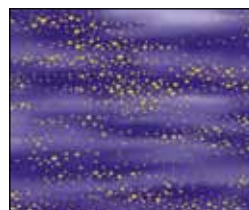
TSUR 5262 C



TSUR 5262 E*



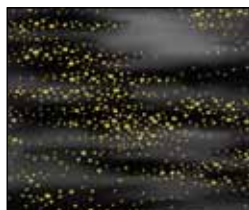
TSUR 5262 R



TSUR 5263 C



TSUR 5263 E



TSUR 5263 K*



TSUR 5263 R*



*Fabrics used in quilt.

†Backing