



Concrete Stain Concentrate

WATERCOLOR ESSENCE™

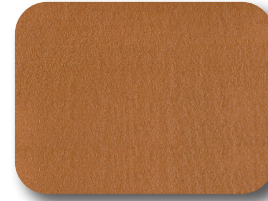
Water-based



Sand



Buff



Caramel



Fossil



Chestnut



Mocha



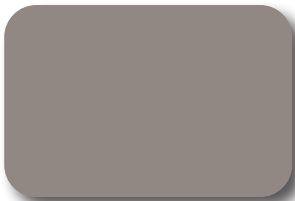
Sienna



Brick



Cedar



Stone



Charcoal



Black



White



Turquoise



Ivy

Water Based Concrete Stain

Concentrate - Add 4 Parts Water to 1 Part Stain

UV Stable - Microground Iron Oxide Pigments

Coverage - 1 Quart concentrate can cover up to 400 square feet

Flexible - A light coat yields a semi-transparent look. Additional coats applied make for an opaque color

Compatible - Protect the color with any type of sealer, water based or solvent based

www.UBQind.com • info@ubqind.com

Technical Data Sheet (TDS) – Active Elements – WaterColor Essence

**This product may only be used on fully cured concrete. Allow a minimum of 28-45 days of cure time after the concrete is poured to allow ample time for the concrete to completely hydrate.

Active Elements – WaterColor Essence is an environmentally friendly penetrating waterborne acrylic pigmented stain. Active Elements – WaterColor Essence is designed to give predictable natural colors. It is a one-step staining process that can be used for faux finishing, changing hues, or correcting errors after acid staining (acid-stained surface must be cleaned and neutralized prior to application), for interior and exterior concrete, horizontal or vertical. A final clear sealer is recommended to prolong the life span of the stain.

DILUTION - Use ONLY distilled water to dilute this product. Add 4 parts distilled water to 1 part Active Elements – WaterColor Essence

COVERAGE - 50 - 100 square feet per gallon (fully diluted with 4 quarts (128 fl oz) distilled water to 1 quart (32 fl oz) Active Elements – WaterColor Essence). Coverage variations depend on concrete surface porosity, amount of material applied, and desired opacity.

SURFACE PREPARATION - Concrete must be clean and free of dirt, dust, oil, grease, mold, mildew, and any other contaminants. All new concrete should be allowed to cure for a minimum of 28-45 days, or until a pH reading of 10.5 or less is achieved. Concrete must be dry prior to application. Pay special attention to cracks, control joints, and slab edges when checking for dryness of the concrete.

Recommended preparation steps: (refer to Tech Data Sheets for each product below)

1. Remove any paint or sealer from the surface using Active Elements - Paint Strip.
 2. Remove any grease or oil from the surface using Active Elements - Degrease.
 3. Profile the surface and/or remove loose latent concrete using Active Elements - Surface Etch.
- Neutralize the surface acidity immediately after Surface Etch has stopped fizzing with Active Elements - Neutralize.
4. Pressure Wash the entire surface to ensure it is completely clean.
 5. Allow the surface to dry.

DIRECTIONS - Use ONLY distilled water to dilute this product. Before use, shake well. Mix 1 part Active Elements – WaterColor Essence with 4 parts distilled water. Mix thoroughly. Apply with adequate ventilation. The surface must be clean and free of grease, oil, and all other contaminants. Apply stain with airless HVLP or pump sprayer, sea sponge, brush, rag, or roller. Additional coats may be added when the previous coat is dry. Allow a minimum of 24 hours after the surface is dry-to-the-touch, before applying the clear sealer. Immediately clean splatters with water.

APPLICATION TOOLS - Airless, HVLP or pump sprayer, sea sponge, brush, rag, or roller

APPLICATION - When spraying Active Elements – WaterColor Essence, protect the surroundings with masking paper or masking plastic. Always use a filter when pouring the “ready to use” Active Elements – WaterColor Essence into a sprayer. Concrete surface temperature must be between 50 -90 degrees. In arid climates, it may be necessary to dampen the concrete prior to the application of stain to prevent the material from drying instantly. To penetrate the stain must have several minutes of “wet” time on the surface.

DRY TIME

Drying time is dependent upon temperature and humidity.

Dry to touch	15 -30 minutes
Recoat	15 -30 minutes
Light foot traffic	1 hour

CLEAN UP - Tools can be cleaned with water and/or soapy water.

SEALING - A minimum of 24 hours of drying time (after the stain has dried to the touch) is required before applying a clear sealer. It is strongly recommended that a clear sealer be applied as a topcoat for abrasion and UV resistance. It is recommended that a non-skid / skid reducer be utilized when sealing exterior surfaces.

VARIANCES - Results may vary due to shades and or hues of concrete. The texture of the slab affects the final color appearance. Many slab characteristics show through the stain, especially with more transparent colors.

COLOR TEST - Apply a test sample of the stain in an inconspicuous area of the floor to verify the color. It is advised to use the same application method for the test spot as what is planned for the entire floor.

STORAGE AND SHELF LIFE- Do not allow Active Elements – WaterColor Essence to freeze. The shelf life of the unopened product is approximately one year. Mixed / diluted product shelf life stored in an airtight container is 30 days.

SAFETY - Always use appropriate safety equipment including but not limited to, goggles, face shield, rubber gloves, chemical resistant clothing or apron, and chemical respirator. Consult the product MSDS for additional safety information.

Warranty– This warranty is made in lieu of all other warranties, either expressed or implied. Before application the User shall determine the suitability of the product for his/her intended use and User assumes all risks and liabilities whatsoever in connection therewith. Neither seller nor manufacturer has any knowledge or control concerning the purchaser's use of this product and no warranty is made as to the results of any use. The Manufacturer and/or Seller warrants that if any goods supplied prove defective in material the sole obligation shall be to replace said product. Any claim of defective product must be received in writing within one (1) year from date of shipment. Neither Manufacturer nor Seller shall assume any liability for injury, loss, or damage resulting from use of this product.