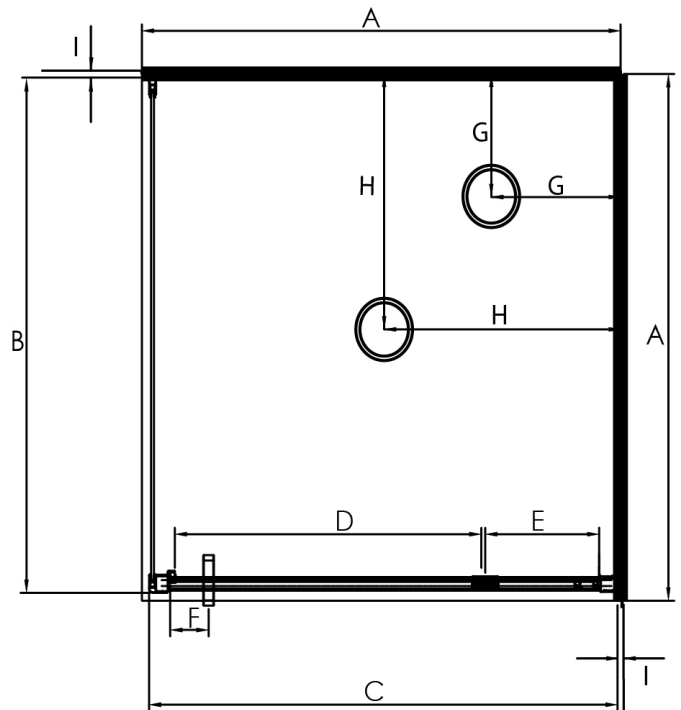


ELEGANCE SQUARE PIVOT DOOR SHOWERS



Pictured - Elegance 900 x 900mm Pivot Door
Chrome Moulded Wall
SKU 98100



DESCRIPTION

The Elegance Square range of Showers can be purchased as a complete shower cubicle including Acrylic Tray, Wall Liner and Door Pack.

The Door Pack and Tray can also be purchased as individual items for a tiled floor and/or wall installation.

FEATURES

- Low profile tray with 40mm upstand
- 1950mm high glass
- Total OVERALL height 2020mm
- Removeable drip strip and gutter
- Pivot door - Modern 1pc design, 6mm Safety Glass
- Door is reversible (flip to fit)
- Magnetic strip on closing edge of door
- Metal trim on base of glass return
- Polished quality metal chrome handle, inner & outer
- Available in White, Chrome and Black

LEGEND

Dimension	Description	Shower Size		
		820mm	900mm	1000mm
A	Tray External Dimension	820mm	900mm	1000mm
B	Return Panel Dimension	790mm	870mm	970mm
C	Door Frame Dimension	790mm	870mm	970mm
D	Door Opening Dimension	560mm	640mm	640mm
E	Centre of Pivot Block to Inside of Frame	138mm	138mm	238mm
F	Centre of Handle to Edge of Door	80mm	80mm	80mm
G	Waste position (Corner waste)	250mm	250mm	250mm
H	Waste Position (Centre waste)	410mm	450mm	500mm
I	Gib Board + Glue + Liner Thickness	13mm	13mm	13mm

ORDERING CODES

Product Description	SKU CODE		
	820mm	900mm	1000mm
CENTRE WASTE			
Complete Cubicle White Flat Wall	98089	98096	98120
Complete Cubicle Chrome Flat Wall	98090	98097	98121
Complete Cubicle Black Flat Wall	N/A	98098	98122
Complete Cubicle White Moulded Wall	98331	98099	98123
Complete Cubicle Chrome Moulded Wall	98091	98100	98124
Complete Cubicle Black Moulded Wall	N/A	98101	98125
CORNER WASTE			
Complete Cubicle White Flat Wall	98092	98108	98132
Complete Cubicle Chrome Flat Wall	98093	98109	98133
Complete Cubicle Black Flat Wall	N/A	98110	98134
Complete Cubicle White Moulded Wall	98094	98111	98135
Complete Cubicle Chrome Moulded Wall	98095	98112	98136
Complete Cubicle Black Moulded Wall	N/A	98113	98137
PARTS ONLY			
Tray Only Centre Waste	TFS8X8CW	TFS9X9CW	TFS1000CW
Tray Only Corner Waste	TFS8X8CNR	TFS9X9CNR	TFS1000CNR
Liner Only Flat Wall 1950mm High	LB820FW2S195	LB9X9FW2S195	LB1X1FW2S195
Liner Only Moulded Wall 1950mm High	LB820MW2S195	LB9X9MW2S195	LB1X1MW2S195
Pivot Door Pack Complete 1950mm High White	D8DX8RWH195	D9DX9RWH195	D1DX1RWH195
Pivot Door Pack Complete 1950mm High Chrome	D8DX8RSI195	D9DX9RSI195	D1DX1RSI195
Pivot Door Pack Complete 1950mm High Black	N/A	D9DX9RBL195	D1DX1RBL195

WARRANTY INFORMATION

All bathroomware products supplied by Nouera Shower Systems carry our Quality Assurance and Product Warranty. We use the highest quality materials available and manufacture these in accordance with New Zealand specifications and requirements to ensure that all products are fit for the intended purpose for which they are designed. Our customers peace of mind is of paramount importance to us.

Warranty Periods

Baths	10 years
Showers	10 years
Shower Screens and Doors	10 years
Black Coating on Framework	5 years

Warranty Exclusions

The product must be installed according to the instructions supplied.
The water supply temperature applied to the product must not exceed 55 degrees Celsius.
Commercial applications are restricted to a 2 year warranty on all products.

CLEANING AND MAINTENANCE

Bathroom products are used often and the following is our suggestion on how to clean and care for them.

Shower Wall

We use Durosan premium quality sanitaryware grade Acrylic. It is, by design, very robust and chemical resistant. A soft damp cloth with non-abrasive cleaners should be used. Use only non-abrasive cleaners that are recommended for acrylic products.

Shower Tray and Bath

We manufacture our Shower Trays and Baths using a Solid Acrylic Surface. Most other shower trays are manufactured using a veneer acrylic surface. The great advantage is that small scratches can be removed easily by using fine cutting compound. Again, the same basic cleaning methods as the wall are recommended.

Shower Doors and Glass

All glass is compliant to AS/NZS 2208. We suggest that the glass surfaces are wiped down or squeegeed following use to remove excess water. For best results use a trusted glass cleaner.

Metal Framework

Should be cleaned using a soft damp cloth with non-abrasive cleaner. Note that on round showers, the bottom rollers are easy release for ease of cleaning. If chemical spray cleaners are used, avoid direct contact with the rollers and guides and ensure the shower is rinsed off to avoid residue build up.

Weather Seals and Drip Strips

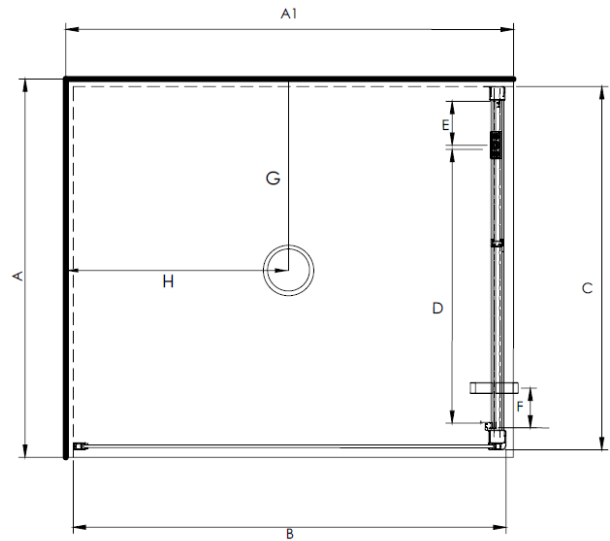
Can be removed if required for cleaning, and can be replaced when they no longer look their best. Refer to the spare parts and accessories section of our website for more details.

Note - If the Glass has been treated follow specific cleaning instructions from the system provider.

ELEGANCE 900 x 760 PIVOT DOOR SHOWERS



Pictured - Aquero 900x760mm (900mm Door)
Left-hand Tray Configuration White Moulded Wall
SKU 98146



DESCRIPTION

The Elegance Range of Pivot Door Showers can be purchased as a complete Shower Cubicle including Acrylic Tray, Wall Liner and Door Pack.

The Door Pack and Tray can also be purchased as individual items for installation on a tiled floor and/or wall.

SEE TILE SHOWER LAYOUT FOR SETOUT DIMENSIONS

The door is reversible (flip to fit).

FEATURES

- Total OVERALL height 2020mm
- Available in Chrome or White
- Low profile tray with 40mm upstand
- 1950mm high glass
- Pivot door in a modern 1 piece design with 6mm safety glass
- Extrusions allow for adjustment to wall and floor
- High quality hardware
- Door can be ordered on 760mm side as an optional extra (surcharge applies)

LEGEND

Dimension	Description	Shower Size	
		900 x 760 760 Door	900 x 760 900 Door
A	Tray External Width Dimension	760mm	760mm
A1	Tray External Length Dimension	900mm	900mm
B	Return Panel Dimension	870mm	730mm
C	Door Frame Dimension	730mm	870mm
D	Door Opening Dimension	550mm	640mm
E	Centre of Pivot Block to Inside of Frame	88mm	138mm
F	Centre of Handle to Edge of Door	80mm	80mm
G	Waste position	380mm	380mm
H	Waste position	450mm	450mm

ORDERING CODES

Product	SKU CODE			
	900X760mm LH 900mm Door	900X760mm RH 900mm Door	900X760mm LH 760mm Door	900 X 760mm RH 760mm Door
Complete Cubicle 2 Sided Flat Wall White Pivot Door	98144	98150	98156*	98160*
Complete Cubicle 2 Sided Flat Wall Chrome Pivot Door	98145	98151	98157*	98161*
Complete Cubicle 2 Sided Moulded (900 side) Back Wall White Pivot Door	98146	98152	98158*	98162*
Complete Cubicle 2 Sided Moulded (900 side) Back Wall Chrome Pivot Door	98147	98153	98159*	98163*
Flat Tray Only	TFS9X7LHCW	TFS9X7RHCW	TFS9X7LHCW	TFS9X7RHCW
Flat 2 Sided Wall Liner Only White 1950mm high	LB9X7FW2S195	LB9X7FW2S195	LB9X7FW2S195	LB9X7FW2S195
Moulded 2 Sided Back Wall / Wall Liner Only White 1950mm high	LB9X7MW2S195	LB9X7MW2S195	LB9X7MW2S195	LB9X7MW2S195
Pivot Door and Return Only White (reversible opening)	D9DX7RWH195	D9DX7RWH195	D7DX9RWH195	D7DX9RWH195
Pivot Door and Return Only Chrome (reversible opening)	D9DX7RSI195	D9DX7RSI195	D7DX9RSI195	D7DX9RSI195

WARRANTY INFORMATION

All bathroomware products supplied by Nouera Shower Systems carry our Quality Assurance and Product Warranty. We use the highest quality materials available and manufacture these in accordance with New Zealand specifications and requirements to ensure that all products are fit for the intended purpose for which they are designed. Our customers peace of mind is of paramount importance to us.

Warranty Periods

Baths	10 years
Showers	10 years
Shower Screens and Doors	10 years
Black Coating on Framework	5 years

Warranty Exclusions

The product must be installed according to the instructions supplied.
The water supply temperature applied to the product must not exceed 55 degrees Celsius.
Commercial applications are restricted to a 2 year warranty on all products.



CLEANING AND MAINTENANCE

Bathroom products are used often and the following is our suggestion on how to clean and care for them.

Shower Wall

We use Durosan premium quality sanitaryware grade Acrylic. It is, by design, very robust and chemical resistant. A soft damp cloth with non-abrasive cleaners should be used. Use only non-abrasive cleaners that are recommended for acrylic products.

Shower Tray and Bath

We manufacture our Shower Trays and Baths using a Solid Acrylic Surface. Most other shower trays are manufactured using a veneer acrylic surface. The great advantage is that small scratches can be removed easily by using fine cutting compound. Again, the same basic cleaning methods as the wall are recommended.

Shower Doors and Glass

All glass is compliant to AS/NZS 2208. We suggest that the glass surfaces are wiped down or squeegeed following use to remove excess water. For best results use a trusted glass cleaner.

Metal Framework

Should be cleaned using a soft damp cloth with non-abrasive cleaner. Note that on round showers, the bottom rollers are easy release for ease of cleaning. If chemical spray cleaners are used, avoid direct contact with the rollers and guides and ensure the shower is rinsed off to avoid residue build up.

Weather Seals and Drip Strips

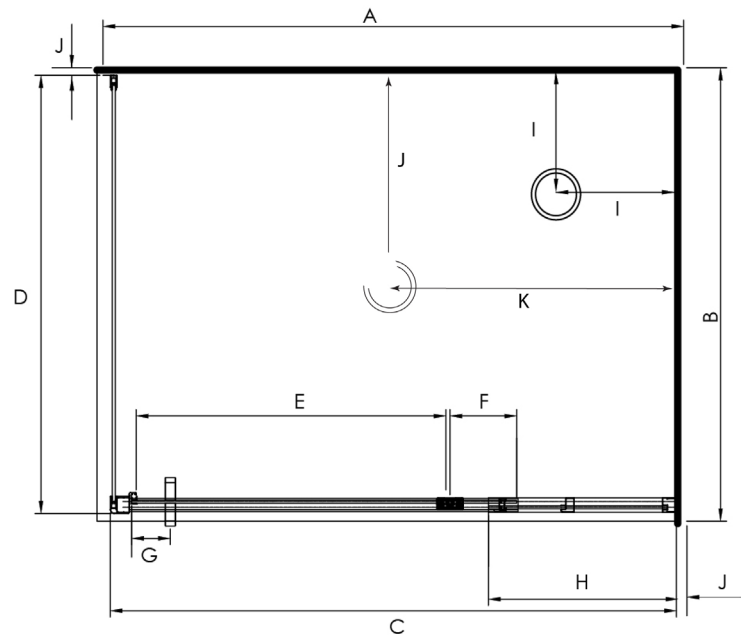
Can be removed if required for cleaning, and can be replaced when they no longer look their best. Refer to the spare parts and accessories section of our website for more details.

Note - If the Glass has been treated follow specific cleaning instructions from the system provider.

ELEGANCE 1200 X 900 PIVOT DOOR SHOWERS



Pictured - Elegance 1200 x 900mm Pivot Door LH
Chrome Flat Wall
SKU 98173



DESCRIPTION

The Elegance Rectangular range of Showers can be purchased as a complete shower cubicle including Acrylic Tray, Wall Liner and Door Pack.

The Door Pack and Tray can also be purchased as individual items for a tiled floor and/or wall installation.

FEATURES

- Low profile tray with 40mm upstand
- 1950mm high glass
- Total OVERALL height 2020mm
- Removeable drip strip and gutter
- Pivot door - Modern 1pc design, 6mm Safety Glass
- Door is reversible (flip to fit)
- Magnetic strip on closing edge of door
- Metal trim on base of glass return
- Polished quality metal chrome handle, inner & outer

LEGEND

Dimension	Description	Shower Size	
		1200 x 900 1200 Door	900 x 1200 900 Door
A	Tray External Length Dimension	1200mm	1200mm
B	Tray External Width Dimension	900mm	900mm
C	Door Frame Dimension	1170mm	870mm
D	Return Panel Dimension	870mm	1170mm
E	Door Opening Dimension	640mm	640mm
F	Centre of Pivot Block to Edge of Door Glass	138mm	138mm
G	Centre of Handle to Edge of Door	80mm	80mm
H	Return Glass Panel Dimension	389mm	N/A
I	Waste position (Centre Waste)	250mm	250mm
J	Waste position (Corner Waste)	450mm	600mm
K	Waste position (Corner Waste)	600mm	450mm

ORDERING CODES

Product Description	SKU CODE			
	1200 X900 LH 1200mm Door	1200 X 900 RH 1200mm Door	900 x 1200 LH 900mm Door	900 x 1200 RH 900mm Door
CORNER WASTE				
Complete Cubicle White Flat Wall	98172	98186	98200	98204
Complete Cubicle Chrome Flat Wall	98173	98187	98201	98205
Complete Cubicle White Moulded Wall	98174	98188	98202	98206
Complete Cubicle Chrome Moulded Wall	98175	98189	98203	98207
CENTRE WASTE				
Complete Cubicle White Flat Wall	98371	98375	????	????
Complete Cubicle Chrome Flat Wall	98370	98374	????	????
Complete Cubicle White Moulded Wall	98381	98380	????	????
Complete Cubicle Chrome Moulded Wall	98378	98379	????	????
PARTS ONLY				
Tray Only Corner Waste	TFS12X9LHCNR	TFS12X9RHCNR	TFS12X9LHCNR	TFS12X9RHCNR
Tray Only Centre Waste	TFS12X9LHCW	TFS12X9RHCW	TFS12X9LHCW	TFS12X9RHCW
Liner Only Flat Wall 1950mm High	LB12X9FW2S195	LB12X9FW2S195	LB12X9FW2S195	LB12X9FW2S195
Liner Only Moulded Wall 1950mm High	LB12X9MW2S195	LB12X9MW2S195	LB12X9MW2S195	LB12X9MW2S195
Pivot Door Pack Complete 1950mm High White	D12DX9RWH195	D12DX9RWH195	D9DX12RWH195	D9DX12RWH195
Pivot Door Pack Complete 1950mm High Chrome	D12DX9RSI195	D12DX9RSI195	D9DX12RSI195	D9DX12RSI195

WARRANTY INFORMATION

All bathroomware products supplied by Nouera Shower Systems carry our Quality Assurance and Product Warranty. We use the highest quality materials available and manufacture these in accordance with New Zealand specifications and requirements to ensure that all products are fit for the intended purpose for which they are designed. Our customers peace of mind is of paramount importance to us.

Warranty Periods

Baths	10 years
Showers	10 years
Shower Screens and Doors	10 years

Warranty Exclusions

The product must be installed according to the instructions supplied.
The water supply temperature applied to the product must not exceed 55 degrees Celsius.
Commercial applications are restricted to a 2 year warranty on all products.

CLEANING AND MAINTENANCE

Bathroom products are used often and the following is our suggestion on how to clean and care for them.

Shower Wall

We use Durosan premium quality sanitaryware grade Acrylic. It is, by design, very robust and chemical resistant. A soft damp cloth with non-abrasive cleaners should be used. Use only non-abrasive cleaners that are recommended for acrylic products.

Shower Tray and Bath

We manufacture our Shower Trays and Baths using a Solid Acrylic Surface. Most other shower trays are manufactured using a veneer acrylic surface. The great advantage is that small scratches can be removed easily by using fine cutting compound. Again, the same basic cleaning methods as the wall are recommended.

Shower Doors and Glass

All glass is compliant to AS/NZS 2208. We suggest that the glass surfaces are wiped down or squeegeed following use to remove excess water. For best results use a trusted glass cleaner.

Metal Framework

Should be cleaned using a soft damp cloth with non-abrasive cleaner. Note that on round showers, the bottom rollers are easy release for ease of cleaning. If chemical spray cleaners are used, avoid direct contact with the rollers and guides and ensure the shower is rinsed off to avoid residue build up.

Weather Seals and Drip Strips

Can be removed if required for cleaning, and can be replaced when they no longer look their best. Refer to the spare parts and accessories section of our website for more details.

Note - If the Glass has been treated follow specific cleaning instructions from the system provider.