

SPECIFICATION SHEET

Frank Plus 900mm 1 Drawer Wall Vanity



Features

- Wall Hung
- 1 Drawer
- Extrusion Rail - Matte White & Matte Black
*Matte White Vanities are paired with Matte White Extrusion.
Charred Elm Vanities are paired with Matte Black Extrusion.*
- 20mm Clasico VC Basin with Overflow
- Dimensions: H420 x W900 x D465
- Designed & Assembled in NZ

Colour Options with Code

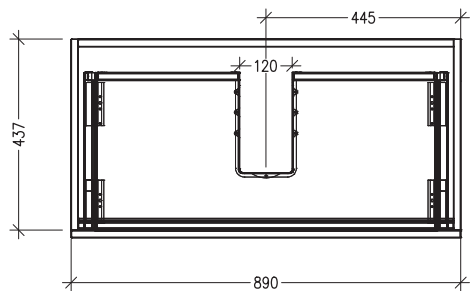


Matte White
9260MW

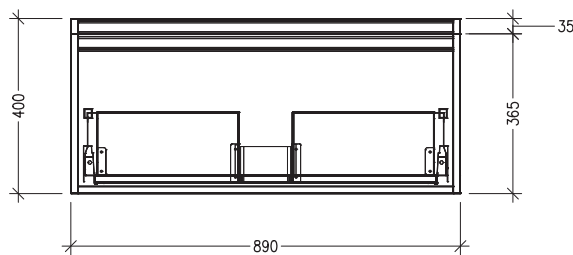
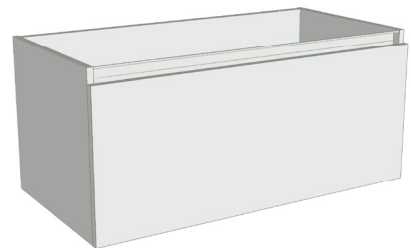
Charred Elm
9260CE

Technical Details

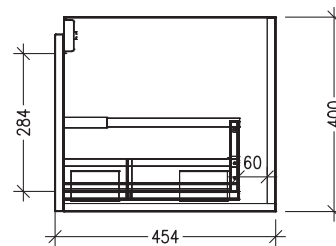
Note: All measurements shown are in millimetres. Sizes are nominal.



TOP VIEW



FRONT VIEW



SIDE VIEW