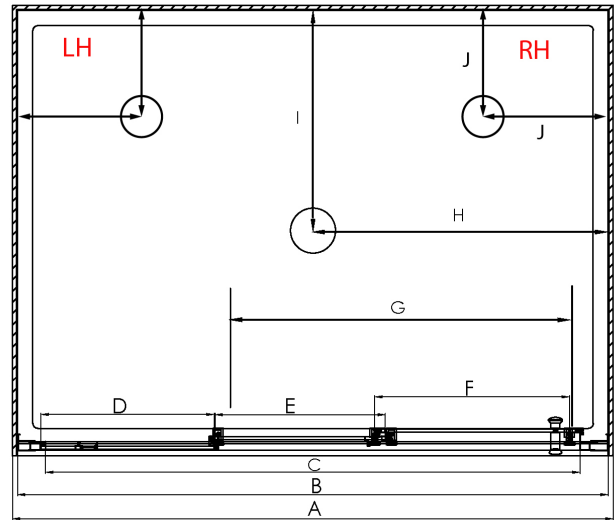


ELEGANCE ALCOVE **STACKER DOOR** SHOWERS



Pictured above - Elegance 900 x 900 x 900 3 Sided Alcove Flat Wall Silver

SKU 98216



DESCRIPTION

The Elegance Alcove range of showers can be purchased as a complete shower cubicle including Acrylic Tray, Wall Liner and Door Pack.

The Door Pack and Tray can also be purchased as individual items for installation on a tiled floor and/or wall.

FEATURES

- Low profile tray with 40mm upstand
- 1950mm high glass
- Total OVERALL height 2020mm
- Removeable drip strip and gutter
- 3 panel sliding door - silver finish with adjustable rollers
- Magnetic strip on closing edge of door
- Auto glide sliding door feature
- Quality Alloy handle, inner & outer
- Door is reversible and can open left to right or right to left

LEGEND

Dimension	Description		
		900mm	1000mm
A	Tray External Dimension	900mm	1000mm
B	Door Frame Outer Dimension (including receivers)	875mm	975mm
C	Door Frame Inner Dimension	768mm	868mm
D	Fixed Glass Panel Width	246mm	280mm
E	Centre Sliding Panel Width	240mm	273mm
F	Outer Sliding Panel Width	289mm	322mm
G	Overall Door Opening Width	417mm	484mm
H	Waste Position from Outside of Tray (Centre Waste)	450mm	500mm
I	Waste Position From Outside of Tray (Centre Waste)	450mm	500mm
J	Waste Position (Corner Waste)	250mm	N/A

## ORDERING CODES

Product Description		
	900mm	1000mm
Square Alcove 3 Sided Flat Wall Chrome 3 Panel Sliding Stacker Door Centre Waste	98216	98232
Square Alcove 3 Sided Moulded Back Wall Chrome 3 Panel Sliding Stacker Door Centre Waste	98217	98233
Square Alcove 3 Sided Flat Wall Chrome 3 Panel Sliding Stacker Door Corner Waste LH	98434	N/A
Square Alcove 3 Sided Flat Wall Chrome 3 Panel Sliding Stacker Door Corner Waste RH	98435	N/A
Square Alcove 3 Sided Moulded Back Wall Chrome 3 Panel Sliding Stacker Door Corner Waste LH	98436	N/A
Square Alcove 3 Sided Moulded Back Wall Chrome 3 Panel Sliding Stacker Door Corner Waste RH	98437	N/A
Flat Alcove Tray Rear Centre Waste Only	TFS9X9ALCCW	TFS1000ALCCW
Flat Alcove Tray LH Corner Waste Only	TFS9X9ALCLHCNR	N/A
Flat Alcove Tray RH Corner Waste Only	TFS9X9ALCRHCNR	N/A
Flat Alcove Wall Liner Only White 1950mm High	LB9X9X9FW3S195	LB1X1X1FW3S195
Moulded Back Wall Wall Liner Only White 1950mm High	LB9X9X9MW3S195	LB1X1X1MW3S195
3 Panel Sliding Stacker Door Only Chrome 1950mm High	D3PS900SI195ELITE	D3PS1000SI195ELITE

## WARRANTY INFORMATION

All bathroomware products supplied by Fibre Systems carry our Quality Assurance and Product Warranty. We use the highest quality materials available and manufacture these in accordance with New Zealand specifications and requirements to ensure that all products are fit for the intended purpose for which they are designed. Our customers peace of mind is of paramount importance to us.

### Warranty Periods

Showers	10 years
Drop In baths	10 years
Shower Screens and Doors	10 years
Black Coating on Framework	5 years
Freestanding Baths	5 years
Trade Range Showers	5 years
Accessories	2 years

### Warranty Exclusions

The product must be installed according to the instructions supplied.

The water supply temperature applied to the product must not exceed 55 degrees Celsius.

Commercial applications (where products are installed in a building where occupancy is via a commercial arrangement i.e. rental property, hotel, hostel etc.) are restricted to a 2 year warranty on all products.



## PRODUCT MAINTENANCE

Bathroom products are used often and the following is our suggestion on how to clean and care for them.

### Shower Wall

We use Durosan premium quality sanitaryware grade Acrylic. It is, by design, very robust and chemical resistant. A soft damp cloth with non-abrasive cleaners should be used. Use only non-abrasive cleaners that are recommended for acrylic products.

### Shower Tray and Bath

We manufacture our Shower Trays and Baths using a Solid Acrylic Surface. Most other shower trays are manufactured using a veneer acrylic surface. The great advantage is that small scratches can be removed easily by using fine cutting compound. Again the same basic cleaning methods as the wall are recommended.

### Shower Doors and Glass

All glass is compliant to AS/NZS 2208. We suggest that the glass surfaces are wiped down or squeegeed following use to remove excess water. For best results use a trusted glass cleaner.

### Metal Framework

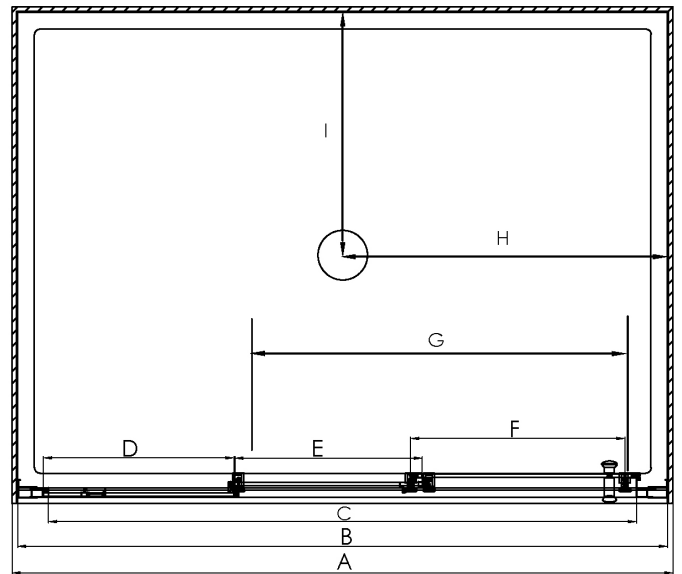
Should be cleaned using a soft damp cloth with non-abrasive cleaner. Note that on round showers, the bottom rollers are easy release for ease of cleaning. If chemical spray cleaners are used, avoid direct contact with the rollers and guides and ensure the shower is rinsed off to avoid residue build up.

### Weather Seals and Drip Strips

Can be removed if required for cleaning, and can be replaced when they no longer look their best. Refer to the spare parts and accessories section of our website for more details.

**Note - If the Glass has been treated follow specific cleaning instructions from the system provider.**

ELEGANCE ALCOVE 3 PANEL STACKER DOOR SHOWERS



Pictured above - Elegance 800 x 1200 x 800 Alcove 3 Panel Stacker Flat Wall Chrome

SKU 98242

DESCRIPTION

The Elite Elegance Alcove Range of 3 Panel Stacker Door Showers can be purchased as a complete Shower Cubicle including Acrylic Tray, Wall Liner and Door Pack.

The Door Pack can also be purchased as an individual item for installation on a tiled floor and/or tiled wall.

SEE TILE SHOWER LAYOUT FOR SETOUT DIMENSIONS

The door is reversible - and closes to the finished wall.

FEATURES

- Total OVERALL height 2020mm
- Low profile tray with 40mm upstand
- 1950mm high glass
- 6mm Safety Glass compliant to NZ Safety Standard AS/NZ S2208
- Extrusions allow for adjustment to wall and floor
- High quality hardware
- Door is reversible and can open left to right or right to left

LEGEND

Dimension	Description	Size				
		760 x 900 x 760mm	800x1200x800mm	1200x900x1200mm	900x1200x900mm	1000x1200x1000mm
A	Tray External Dimension	900mm	1200mm	900mm	1200mm	1200mm
B	Door Frame Outer Dimension (including receivers)	875mm	1175mm	875mm	1175mm	1175mm
C	Door Frame Inner Dimension	768mm	1068mm	768mm	1068mm	1068mm
D	Fixed Glass Panel Width	246mm	346mm	246mm	346mm	346mm
E	Centre Sliding Panel Width	240mm	340mm	240mm	340mm	340mm
F	Outer Sliding Panel Width	289mm	389mm	289mm	389mm	389mm
G	Overall Door Opening Width	417mm	617mm	417mm	617mm	617mm
H	Waste Position from Outside of Tray	450mm	600mm	450mm	600mm	600mm
I	Waste Position From Outside of Tray	450mm	250mm	250mm	250mm	250mm

## ORDERING CODES

Product Description	760 x 900 x 760	800 x 1200 x 800	1200 x 900 x 1200	900 x 1200 x 900	1000 x 1200 x 1000
Square 3 Sided Alcove Flat Wall Chrome 3 Panel Sliding Stacker Door	98222	98242	98421	98252	98444
Square 3 Sided Alcove Moulded Back Wall Chrome 3 Panel Sliding Stacker Door	98223	98243	N/A	98253	N/A
Flat Alcove Tray Only	TFS7X9X7ALCCW	TFS8X12X8ALCRCW	TFS12X9X12ALCRCW	TFS9X12X9ALCRCW	TFS1X12X1ALCRCW
Flat Alcove Wall Liner Only White 1950mm High	LB7X9X7FW3S195	LB8X12X8FW3S195	LB12X9X12FW3S195	LB9X12X9FW3S195	LB1X12X1FW3S195
Moulded Back Wall Wall Liner Only White 1950mm High	LB7X9X7MW3S195	LB8X12X8MW3S195	N/A	LB9X12X9MW3S195	N/A
3 Panel Sliding Stacker Door Only Chrome 1950mm High	D3PS900SI195ELITE	D3PS1200SI195ELITE	D3PS900SI195ELITE	D3PS1200SI195ELITE	D3PS1200SI195ELITE
3 Panel Sliding Stacker Door Only Chrome 1830mm High	D3PS900SI18ELITE	D3PS1200SI18ELITE	D3PS900SI18ELITE	D3PS1200SI18ELITE	D3PS1200SI18ELITE

## WARRANTY INFORMATION

All bathroomware products supplied by Fibre Systems carry our Quality Assurance and Product Warranty. We use the highest quality materials available and manufacture these in accordance with New Zealand specifications and requirements to ensure that all products are fit for the intended purpose for which they are designed. Our customers peace of mind is of paramount importance to us.

### Warranty Periods

Showers	10 years
Drop In baths	10 years
Shower Screens and Doors	10 years
Black Coating on Framework	5 years
Freestanding Baths	5 years
Trade Range Showers	5 years
Accessories	2 years

### Warranty Exclusions

The product must be installed according to the instructions supplied.

The water supply temperature applied to the product must not exceed 55 degrees Celsius.

Commercial applications (where products are installed in a building where occupancy is via a commercial arrangement i.e. rental property, hotel, hostel etc.) are restricted to a 2 year warranty on all products.



## CLEANING AND MAINTENANCE

Bathroom products are used often and the following is our suggestion on how to clean and care for them.

### Shower Wall

We use Durosan premium quality sanitaryware grade Acrylic. It is, by design, very robust and chemical resistant. A soft damp cloth with non-abrasive cleaners should be used. Use only non-abrasive cleaners that are recommended for acrylic products.

### Shower Tray and Bath

We manufacture our Shower Trays and Baths using a Solid Acrylic Surface. Most other shower trays are manufactured using a veneer acrylic surface. The great advantage is that small scratches can be removed easily by using fine cutting compound. Again, the same basic cleaning methods as the wall are recommended.

### Shower Doors and Glass

All glass is compliant to AS/NZS 2208. We suggest that the glass surfaces are wiped down or squeegeed following use to remove excess water. For best results use a trusted glass cleaner.

### Metal Framework

Should be cleaned using a soft damp cloth with non-abrasive cleaner. Note that on round showers, the bottom rollers are easy release for ease of cleaning. If chemical spray cleaners are used, avoid direct contact with the rollers and guides and ensure the shower is rinsed off to avoid residue build up.

### Weather Seals and Drip Strips

Can be removed if required for cleaning, and can be replaced when they no longer look their best. Refer to the spare parts and accessories section of our website for more details.

**Note - If the Glass has been treated follow specific cleaning instructions from the system provider.**