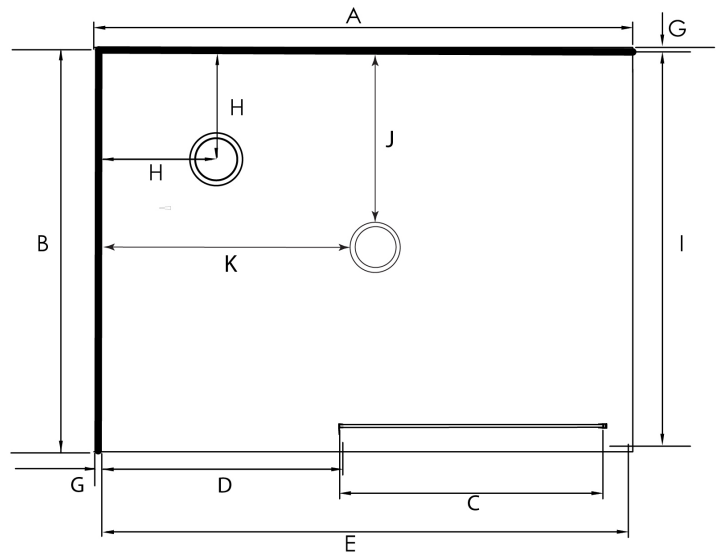


ELEGANCE 2 PANEL SLIDING DOOR SHOWERS



Pictured - Elegance 1200 x 800mm 2 Panel Sliding Door LH  
White Flat Wall  
SKU 98164



DESCRIPTION

The Elegance Rectangular 2 Panel Sliding Door range of Showers can be purchased as a complete shower cubicle including Acrylic Tray, Wall Liner and Door Pack.

The Door Pack and Tray can also be purchased as individual items for a tiled floor and/or wall installation.

FEATURES

- Available in White or Silver
- Low profile tray with 40mm upstand
- 1950mm high glass
- 6mm Safety Glass
- Total OVERALL height 2020mm
- Door can open left to right or right to left
- Extrusions allow for adjustment to wall and floor
- High quality hardware

LEGEND

Dimension	Description	Shower Size	
		1200x800	1200x900
A	Tray Length External Dimension	1200mm	1200mm
B	Tray Depth External Dimension	800mm	900mm
C	Door Opening Dimension +/- 10mm	560mm	560mm
D	Small Return Panel Dimension	542mm	542mm
E	Door Panel Dimension	1186mm	1186mm
F	Large Return Panel Dimension	780mm	880mm
G	Gib Board + Glue + Liner Thickness	13mm	13mm
H	Corner Waste Position (from Framing)	250mm	250mm
J	Centre Waste Position (from Framing)	N/A	450mm
K	Centre Waste Position (from Framing)	N/A	600mm

## ORDERING CODES

Product Description	SKU CODE			
	1200 x 800 LH	1200 x 800 RH	1200 x 900 LH	1200 x 900 RH
Complete Cubicle White Flat Wall (Corner Waste)	98164	98168	98182	98196
Complete Cubicle Chrome Flat Wall (Corner Waste)	98165	98169	98183	98197
Complete Cubicle White Moulded Wall (Corner Waste)	98166	98170	98184	98198
Complete Cubicle Chrome Moulded Wall (Corner Waste)	98167	98171	98185	98199
Complete Cubicle White Flat Wall (Centre Waste)	N/A	N/A	98355	98357
Complete Cubicle Chrome Flat Wall (Centre Waste)	N/A	N/A	98354	98356
Complete Cubicle White Moulded Wall (Centre Waste)	N/A	N/A	98387	98389
Complete Cubicle Chrome Moulded Wall (Centre Waste)	N/A	N/A	98386	98388
Tray Only Corner Waste	TFS12X8LHCNR	TFS12X8RHCNR	TFS12X9LHCNR	TFS12X9RHCNR
Tray Only Centre Waste	N/A	N/A	TFS12X9LHCW	TFS12X9RHCW
Liner Only Flat Wall 1950mm High 2 sided	LB12X8FW2S195	LB12X8FW2S195	LB12X9FW2S195	LB12X9FW2S195
Liner Only Moulded Wall 1950mm High 2 sided	LB12X8MW2S195	LB12X8MW2S195	LB12X9MW2S195	LB12X9MW2S195
Door / Return Pack 1950mm High White LH/RH	DG12DX8RWH195	DG12DX8RWH195	DG12DX9RWH195	DG12DX9RWH195
Door / Return Pack 1950mm High Chrome LH/RH	DG12DX8RSI195	DG12DX8RSI195	DG12DX9RSI195	DG12DX9RSI195

## WARRANTY INFORMATION

All bathroomware products supplied by Nouera Shower Systems carry our Quality Assurance and Product Warranty. We use the highest quality materials available and manufacture these in accordance with New Zealand specifications and requirements to ensure that all products are fit for the intended purpose for which they are designed. Our customers peace of mind is of paramount importance to us.

### Warranty Periods

Baths	10 years
Showers	10 years
Shower Screens and Doors	10 years

### Warranty Exclusions

The product must be installed according to the instructions supplied.  
The water supply temperature applied to the product must not exceed 55 degrees Celsius.  
Commercial applications are restricted to a 2 year warranty on all products.

## CLEANING AND MAINTENANCE

Bathroom products are used often and the following is our suggestion on how to clean and care for them.

### Shower Wall

We use Durosan premium quality sanitaryware grade Acrylic. It is, by design, very robust and chemical resistant. A soft damp cloth with non-abrasive cleaners should be used. Use only non-abrasive cleaners that are recommended for acrylic products.

### Shower Tray and Bath

We manufacture our Shower Trays and Baths using a Solid Acrylic Surface. Most other shower trays are manufactured using a veneer acrylic surface. The great advantage is that small scratches can be removed easily by using fine cutting compound. Again, the same basic cleaning methods as the wall are recommended.

### Shower Doors and Glass

All glass is compliant to AS/NZS 2208. We suggest that the glass surfaces are wiped down or squeegeed following use to remove excess water. For best results use a trusted glass cleaner.

### Metal Framework

Should be cleaned using a soft damp cloth with non-abrasive cleaner. Note that on round showers, the bottom rollers are easy release for ease of cleaning. If chemical spray cleaners are used, avoid direct contact with the rollers and guides and ensure the shower is rinsed off to avoid residue build up.

### Weather Seals and Drip Strips

Can be removed if required for cleaning, and can be replaced when they no longer look their best. Refer to the spare parts and accessories section of our website for more details.

**Note - If the Glass has been treated follow specific cleaning instructions from the system provider.**