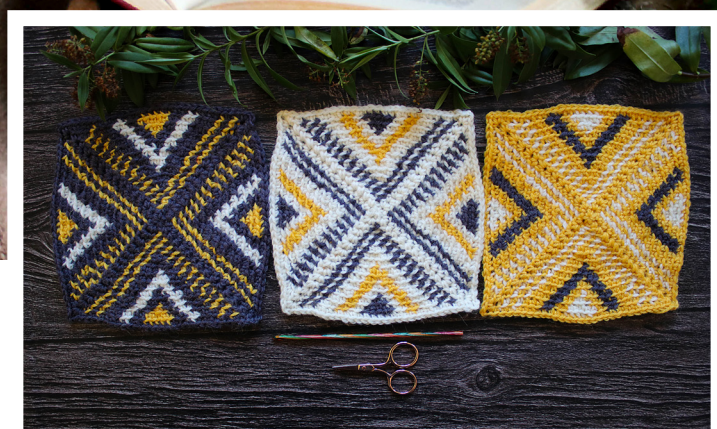


WEST YORKSHIRE SPINNERS

# ColourLab<sup>Dk</sup>

AN EVOLUTION IN COLOUR



## SQUARE ONE COLOURWORK

Cushion Crochet Along by Anna Nikipirowicz



# SQUARE ONE: COLOURWORK

## YARN FOR A COMPLETE CUSHION

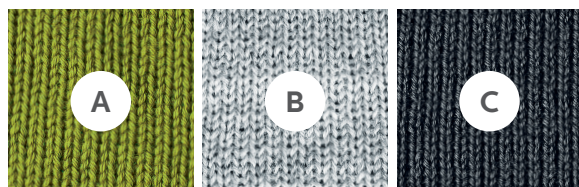
West Yorkshire Spinners ColourLab DK

### Green cushion

Colour A – 1 x Pear Green (186)

Colour B – 1 x Silver Grey (137)

Colour C – 1 x Storm Grey (373)

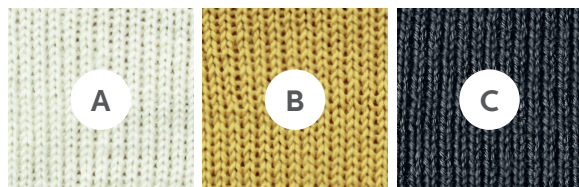


### Yellow cushion

Colour A – 1 x Natural Cream (010)

Colour B – 1 x Citrus Yellow (229)

Colour C – 1 x Storm Grey (373)



100% BRITISH WOOL

TENSION 10cm/4" sq  28 rows 22sts	 4mm US6    4mm USG6	225 METRES
		100g BALL

**Dk**  
Double Knit



Do not tumble dry  
Do not spin  
Reshape whilst damp

## ABBREVIATIONS

[ ]	work instructions within brackets as many times as directed
*	repeat instructions following the asterisk as directed
Approx	approximately
Beg	beginning
Ch	chain
Ch-sp	chain space
Dc (US sc)	double crochet (US single crochet)
Miss	skip/omit next stitch(es)
Rep	repeat
Rnd(s)	round(s)
RS	right side
Sp	space
Sl st	slip stitch
St(s)	stitch(es)
Yrh	yarn around hook
WS	wrong side

## MATERIALS

4.50 mm (US 7) crochet hook

## TENSION

5 dc and 5 rnds to 2.5 cm (1 in) measured over dc pattern using 4.50 mm (US 7) crochet hook.

It is not vital to achieve any particular tension in each square, however aiming for each finished square to measure approx. 17 x 17 cm (6.7 x 6.7 in), will ensure the given finished measurements.

## FINISHED SIZE

The finished cushion, after blocking, measures approx. 50 x 50cm (19.6 x 19.6 in).

## PATTERN NOTES

Pattern is written using UK terminology, with US conversions given in brackets in the abbreviation list.

You will start every rnd with ch 3 and end with 1 dc into beg ch-3 sp in rnd below, this way you will have a neat joint (see techniques section).

Carry the yarn with you at the back of work, but NOT inside the stitch. Catch the carried yarn every 3rd st when necessary, see tutorial below.

You will work into BACK LOOP of every st, this will ensure your work will not twist.



**MAKE 3 SQUARES – START EACH SQUARE WITH A DIFFERENT COLOUR**

Rnd 1: Colour A or (B, C) work ch 3, 1 dc, [ch 2, 1 dc] 3 times into an adjustable ring, enclosing the yarn end as you work, pull tight on the yarn end to close up opening, sl st to first ch-3 sp. (4 dc)

Join yarn B, work in **BACK LOOP** of every st, using the colourwork technique and changing colour as described in tutorial below. Continue as follows:

Rnd 2: Colour A - ch 3 (counts as ch-2 sp), 1 dc in same ch-sp, B - 1 dc in next st, \* A - [1 dc, ch 2, 1 dc] in next ch-2 sp, B - 1 dc in next st, rep from \* twice more, A - 1 dc into beg ch-3 sp from rnd below, enclosing first of three ch from the beg of this rnd, this creates a nice and invisible joint (see techniques below), sl st to beg ch-3 sp. (12 dc)

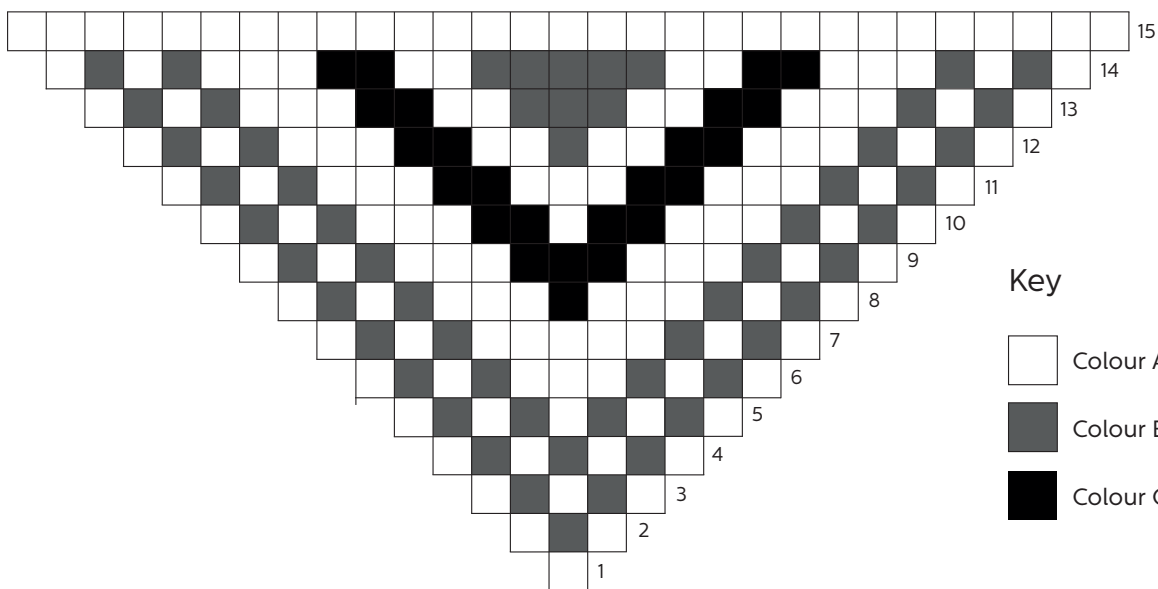
Rnd 3: Colour A - ch 3 (counts as ch-2 sp), 1 dc in same ch-sp, B - 1 dc in next st, A - 1 dc in next st, B - 1 dc in next st, \* A - [1 dc, ch 2, 1 dc] in next ch-2 sp, B - 1 dc in next st, A - 1 dc in next st, B - 1 dc in next st, rep from \* twice more, A - 1 dc into beg ch-3 sp from rnd below, enclosing first of three ch from the beg of this rnd, sl st to beg ch-3 sp. (20 dc)

Rnd 4: Colour A - ch 3 (counts as ch-2 sp), 1 dc in same ch-sp, \*B - 1 dc in next st, A - 1 dc in next st, rep from \* to next ch-2 sp, \*\* A - [1 dc, ch 2, 1 dc] in next ch-2 sp, \*B - 1 dc in next st, A - 1 dc in next st, rep from \* to next ch-2 sp, rep from \*\* twice more, A - 1 dc into beg ch-3 sp from rnd below, enclosing first of three ch from the beg of this rnd, sl st to beg ch-3 sp. (28 dc)

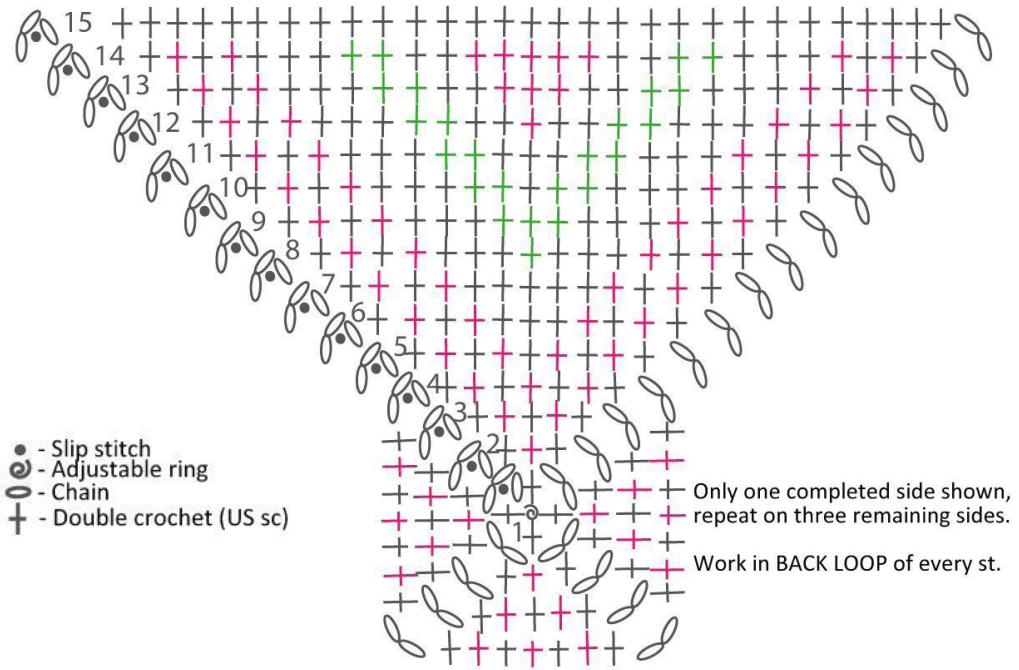
Continue increasing and joining the rnds as set by last rnd, while following the colour chart below, and changing colours when necessary. Work into **BACK LOOP** of every st. Work 11 more rnds. (116 dc, 29 dc on each side)

Fasten off.

Only one side of the square is shown. Rep the instructions for the 3 remaining sides.







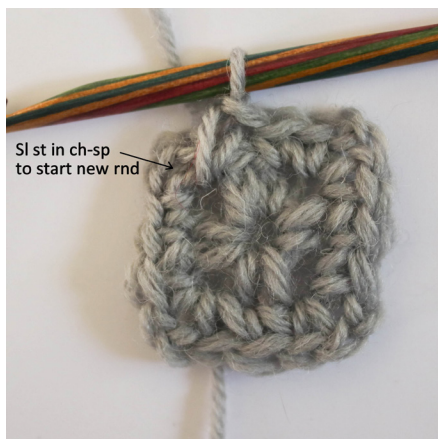


## TECHNIQUES

### Starting squares and joining the rounds

This technique will give you the neatest finish when joining each round.

- 1: Work ch 3, 1 dc, [ch 2, 1 dc] 3 times into an adjustable ring, enclosing the yarn end as you work, pull tight on the yarn end to close up opening.
- 2: Sl st to first ch-3 sp.
- 3: The round is now closed.
- 4: Ch 3 to start new round.
- 5: Work 1 dc in same ch-sp.
- 6: Work the round until you get to beg ch 3.
- 7: Work 1 dc in ch-sp below, the one from previous round, so that you enclose the first ch of ch 3.
- 8: To finish the round, sl st to ch-3 sp you made at the beginning of this round.
- 9: Neat and lovely square finished.



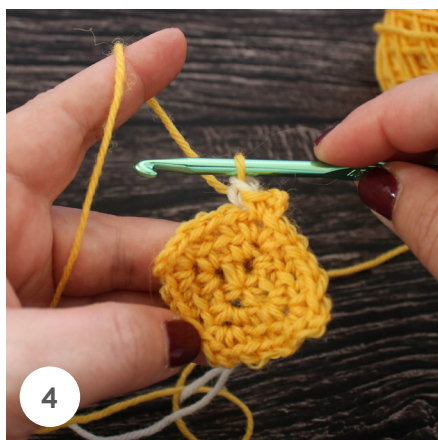
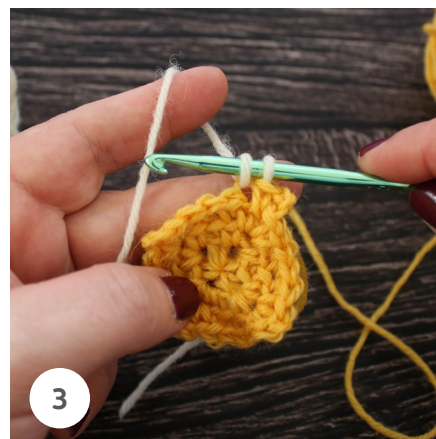
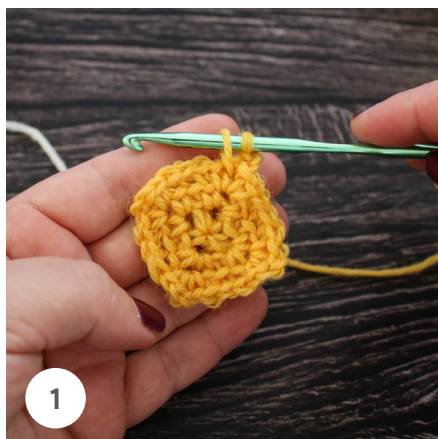


## CROCHET COLOURWORK

To get a neat colour change, we need to change colours one stitch before: For example; if the fourth stitch needs to be a different colour, change yarns on the third stitch. Work to one stitch before the colour change, stop at last stitch when you have two loops on hook and finish off the stitch in different colour.

- 1: Make the first part of dc but stop when you have two loops on hook.
- 2: Drop colour A and finish the stitch with colour B.
- 3: The next st is in colour B, but the following st is in colour A, work the next st but stop when you have two loops on hook.
- 4: Drop colour B, and finish off the stitch in colour A.
- 5: Continue repeating the last steps when colour changes are needed.

**Tip:** To avoid yarns twisting, make sure you keep your colour B to your right, and colour A to your left.



For video on how to work crochet colourwork the two-handed method [CLICK HERE](#)

For video on how to work crochet colourwork the one-handed method [CLICK HERE](#)



## CARRYING YARN

When working colourwork you need to carry the yarn not in use with you all the way around, but only carry the yarn on the rounds that it's required. The neatest way to do this is to catch/strand the yarn every 3rd stitch when not in use.

- 1: When inserting hook to work dc make sure that the yarn to be stranded is placed on top of the hook at the back of work. As shown below, colour B is being stranded and has been placed on top of the hook.
- 2: Work dc as normal, enclosing the strand in the stitch. Continue repeating the 2 steps, enclosing the yarn not in use when necessary.





# WEST YORKSHIRE SPINNERS



## #ColourLabCAL



**Anna Nikirowicz**

[instagram.com/annanikirowicz](https://www.instagram.com/annanikirowicz)

[moochka.co.uk](http://moochka.co.uk)

### **Disclaimer**

Please note that all quantities in this pattern are based on average usage and therefore are approximate. We cannot accept responsibility for the finished garment if any other yarn than the one specified is used.

Although every effort has been made to ensure that instructions are correct, West Yorkshire Spinners cannot accept any liabilities. Owing to photography and printing restrictions the colour reproduction is matched as closely as possible to the yarn.

(0)1535 664500 [sales@wyspinners.com](mailto:sales@wyspinners.com) [wyspinners.com](http://wyspinners.com)

Unit 2, Airedale Park, Royd Ings Avenue, Keighley, West Yorkshire BD21 4DG