



# Flower Girl



## — Cardigans —



### MEASUREMENTS

To Fit Chest					
cm	31	36	41	46	51
in	12	14	16	18	20
Actual Measurement					
cm	41	46	52	57	63
in	16	18	20½	22½	24¾
Full Length					
cm	19	21	26	28	32
in	7½	8¼	10¼	11	12½
Long Sleeve Length					
cm	8	12	15	17	20
in	3	4¾	6	6½	8
Cap Sleeve					
No measurement					

### MATERIALS

#### Cardigan with Cap Sleeves

2 [2:3:3:3]50g balls West Yorkshire Spinners  
Bo Peep DK shade 565 Unicorn

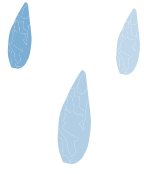
#### Cardigan with Long Sleeves

2 [3:3:4:4]50g balls West Yorkshire Spinners  
Bo Peep DK shade 269 Piglet

1 Pair of 4mm (UK8 – US6) Knitting Needles.

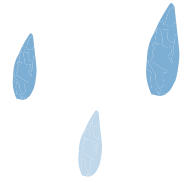
1 Pair of 3.25mm (UK10 – US3) Knitting Needles.

4 [4:5:5:5] Buttons for each Cardigan.



# Puddles

## — Sweater & Hat —



### MEASUREMENTS

#### Sweater - To Fit Chest

cm	31	36	41	46	51
in	12	14	16	18	20

#### Actual Measurement

cm	41	46	52	55	61
in	16	18	20½	21¾	24

#### Full Length

cm	17	19	23	26	30
in	6½	7½	9	10¼	11¾

#### Sleeve Length

cm	8	12	15	17	20
in	3	4¾	6	6½	8½

#### Hat

To fit an average sized baby's head for the age indicated

### MATERIALS

#### Sweater

2 [2:2:2:3] 50g Balls of West Yorkshire Spinners  
Bo Peep DK Main Shade 144 Sailboat

1 [1:1:2:2] 50g Balls of West Yorkshire Spinners  
Bo Peep DK Contrast Shade 305 Tin Man

#### Hat

1 x 50g Balls of West Yorkshire Spinners  
Bo Peep DK Main Shade 144 Sailboat

1 x 50g Balls of West Yorkshire Spinners  
Bo Peep DK Contrast Shade 305 Tin Man

1 Pair of 4mm (UK8 – US6) Knitting Needles.  
1 Pair of 3.25mm (UK10 – US3) Knitting Needles.  
Stitch holders.

2 [2:3:3:3] Buttons for Sweater.





# Little Lady

## — Dress & Shoes —



### MEASUREMENTS

#### Dress - To Fit Chest

cm	31	36	41	46	51
in	12	14	16	18	20

#### Actual Measurement

cm	41	46	52	55	61
in	16	18	20¼	21¼	24

#### Full Length

cm	19	21	26	28	32
in	7½	8¼	10¼	11	12½

#### Sleeve Length

cm	1	1	1	1	1
in	¼	¼	¼	¼	¼

#### Shoes

To fit an average sized foot for the age indicated.

### MATERIALS

#### Dress

2 [2:2:3:3]50g balls West Yorkshire Spinners  
Bo Peep DK shade 210 Cheeky Chops

#### Shoes

1 x 50g balls West Yorkshire Spinners  
Bo Peep DK shade 210 Cheeky Chops

1 Pair of 4mm (UK8 – US6) Knitting Needles.  
1 Pair of 3.25mm (UK10 – US3) Knitting Needles.

Stitch Holders

2 Buttons for Dress.

2 Buttons for Shoes.

Safety Pin for Shoes.

# Tiny Paws

## — Pinafore Dress —



### MEASUREMENTS

To Fit Chest					
cm	31	36	41	46	51
in	12	14	16	18	20
Actual Measurement					
cm	41	46	51	56	61
in	16	18	20	22	24
Full Length (approximately) (when strap folded over and fastened)					
cm	21	25	31	37	41
in	8¼	9¾	12	14½	16
Shoes					
To fit average sized babies foot for size indicated.					

### MATERIALS

#### Pinafore Dress

2 [2:2:3:3]50g balls of West Yorkshire Spinners  
Bo Peep DK shade 165 Teddy Bear

#### Shoes

1 x 50g balls of West Yorkshire Spinners  
Bo Peep DK shade 165 Teddy Bear

1 Pair of 4mm (UK8 – US6) Knitting Needles.

1 Pair of 3.25mm (UK10 – US3) Knitting Needles.

Cable Needle.

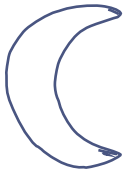
Stitch holder.

2 Buttons for Pinafore Dress.

2 Buttons for Shoes.

Safety Pin for Shoes.





# Moon & Stars

## — Dungarees —



### MEASUREMENTS

To Fit Chest					
cm	31	36	41	46	51
in	12	14	16	18	20
Actual Measurement at widest part					
cm	36	41	46	51	56
in	14	16	18	20	22
Crotch Length (adjustable)					
cm	14	15	16	17	18
in	5½	6	6¼	6½	7

### MATERIALS

2 [2:2:3:3] 50g balls of West Yorkshire Spinners Bo Peep DK shade 725 Space Hopper

1 Pair of 4mm (UK8 – US6) Knitting Needles.

1 Pair of 3.25mm (UK10 – US3) Knitting Needles.

Stitch holders.

2 Buttons.



# Princess



## — Pinafore Dress & Bootees —



### MEASUREMENTS

To Fit Chest					
cm	31	36	41	46	51
in	12	14	16	18	20
Actual Measurement					
cm	35	41	46	52	55
in	13¾	16	18	20½	21¾
Full Length (approximately)					
cm	21	24	30	36	40
in	8¾	9½	11¾	14	15¾
Bootees					
To fit averaged size foot for size indicated					

### MATERIALS

#### Main and Contrast Dress

2 [2:2:3:3]50g balls of West Yorkshire Spinners  
Bo Peep DK Main shade 836 Carousel

1 [2:2:2:2]50g balls of West Yorkshire Spinners  
Bo Peep DK Contrast shade 305 Tin Man

#### Plain Dress

2 [3:3:4:4]50g balls of West Yorkshire Spinners  
Bo Peep DK shade 326 Pixie

#### Bootees

1 x 50g balls of West Yorkshire Spinners  
Bo Peep DK shade 326 Pixie

1 Pair of 4mm (UK8 – US6) Knitting Needles.

1 Pair of 3.25mm (UK10 – US3) Knitting Needles.

2 Buttons for Pinafore Dress.

Stitch Holders.





# Stardust

## — Cardigan & Hat —



### MEASUREMENTS

To Fit Chest					
cm	31	36	41	46	51
in	12	14	16	18	20
Actual Measurement					
cm	35	41	48	53	59
in	13¾	16	19	21	23¼
Full Length (approximately)					
cm	18	20	24	28	32
in	7	8	9½	11	12½
Sleeves					
cm	8	12	15	17	20
in	3	4¾	6	6½	8

### MATERIALS

#### Cardigan

2 [2:2:3:3]50g balls of West Yorkshire Spinners  
Bo Peep DK Main shade 835 Magic

1 [1:1:1:2]50g balls of West Yorkshire Spinners  
Bo Peep DK Contrast shade 305 Tin Man

#### Hat

1 x 50g balls of West Yorkshire Spinners  
Bo Peep DK Main shade 835 Magic

10g oddments of West Yorkshire Spinners  
Bo Peep DK Contrast shade 305 Tin Man

1 Pair of 4mm (UK8 – US6) Knitting Needles.

1 Pair of 3.25mm (UK10 – US3) Knitting Needles.

3 Buttons for cardigan.



# Fluffy Clouds

## — Sweater & Slipover —



### MEASUREMENTS

To Fit Chest					
cm	31	36	41	46	51
in	12	14	16	18	20
Actual Measurement					
cm	41	46	52	57	61
in	16	18	20½	22½	24
Full Length					
cm	17	20	24	28	32
in	6½	8	9½	11	12½
Sleeve Length					
cm	8	12	15	17	20
in	3	4¾	6	6½	8

### MATERIALS

#### Sweater

1 [2:2:2:3]50g Balls of West Yorkshire Spinners  
Bo Peep DK Main shade 834 Splash Time

1 [1:1:2:2]50g Balls of West Yorkshire Spinners  
Bo Peep DK Contrast shade 305 Tin Man

#### Slipover

1 [2:2:2:3]50g Balls of West Yorkshire Spinners  
Bo Peep DK shade 834 Splash Time

1 Pair of 4mm (UK8 – US6) Knitting Needles.

1 Pair of 3.25mm (UK10 – US3) Knitting Needles.

Stitch holders.

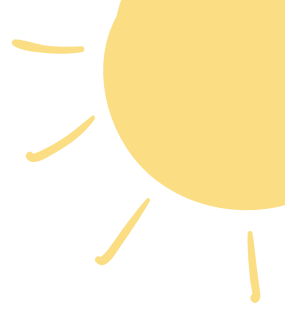
3 Buttons for each garment.

Safety Pin for Slipover.



# Ray of Sunshine

## — Cardigans —



### MEASUREMENTS

To Fit Chest					
cm	51	56	61	66	71
in	20	22	24	26	28
Actual Measurement					
cm	61	66	72	75	81
in	24	26	28½	29½	32
Full Length					
cm	25	30	33	37	41
in	9¾	11¾	13	14½	16
Sleeve Length Short					
cm	4	4	4	5	5
in	1½	1½	1½	2	2
Sleeve Length Long					
cm	20	24	29	33	37
in	8	9½	11½	13	14½

### MATERIALS

#### Short Sleeved Cardigan

3 [3:4:4:5]50g Balls of West Yorkshire Spinners  
Bo Peep DK shade 442 Buttercup

#### Long Sleeved Cardigan

4 [4:5:5:6]50g Balls of West Yorkshire Spinners  
Bo Peep DK shade 011 Tooth Fairy

1 Pair of 4mm (UK8 – US6) Knitting Needles.

1 Pair of 3.25mm (UK10 – US3) Knitting Needles.

4 [4:5:5:6] Buttons for each Cardigan.



# Adventure Time

## — Hooded Sweater —



### MEASUREMENTS

To Fit Chest					
cm	51	56	61	66	71
in	20	22	24	26	28
Actual Measurement					
cm	61	65	75	80	84
in	24	25½	29½	31½	33
Full Length					
cm	30	36	39	44	48
in	11¾	14	15½	17¼	19
Sleeve Length					
cm	20	24	29	33	37
in	8	9½	11½	13	14½

### MATERIALS

#### Hooded Sweater

5 [6:7:7:8]50g Balls of West Yorkshire Spinners  
Bo Peep DK Shade 165 Teddy Bear

- 1 Pair of 4mm (UK8 – US6) Knitting Needles.
- 1 Pair of 3.25mm (UK10 – US3) Knitting Needles.
- 1 3.25mm (UK10 – US3) 80cm Circular Needle if required for Hooded Sweater.
- Cable Needle and stitch holders.
- Safety Pin.
- 2 buttons for Hooded Sweater.





# Cupcake

## — Cardigans —



### MEASUREMENTS

To Fit Chest					
cm	51	56	61	66	71
in	20	22	24	26	28
Actual Measurement					
cm	61	66	72	75	81
in	24	26	28½	29½	32
Full Length					
cm	30	32	36	42	46
in	11¾	12½	14	16½	18
Sleeve Length Long					
cm	20	24	29	33	38
in	8	9½	11½	13	15
Sleeve Length Short					
cm	3	3	3	3	3
in	1¼	1¼	1¼	1¼	1¼

### MATERIALS

#### Short Sleeved Cardigan

3 [3:4:4:5]50g Balls of West Yorkshire Spinners  
Bo Peep DK shade A 011 Tooth Fairy

1 x 50g Balls of West Yorkshire Spinners  
Bo Peep DK shade B 565 Unicorn

1 x 50g Balls of West Yorkshire Spinners  
Bo Peep DK shade C 504 Rascal

#### Long Sleeved Cardigan

4 [4:5:5:6]50g Balls of West Yorkshire Spinners  
Bo Peep DK shade A 269 Piglet

1 x 50g Balls of West Yorkshire Spinners  
Bo Peep DK shade B 305 Tin Man

1 x 50g Balls of West Yorkshire Spinners  
Bo Peep DK shade C 442 Buttercup

1 Pair of 4mm (UK8 - US6) Knitting Needles.

1 Pair of 3.25mm (UK10 - US3) Knitting Needles.  
Stitch Holders.

5 [5:6:6:7] Buttons for each Cardigan.

# Charming Chap

## — Slipover & Sweater —



### MEASUREMENTS

To Fit Chest					
cm	51	56	61	66	71
in	20	22	24	26	28
Actual Measurement					
cm	61	65	72	75	81
in	24	26	28½	29½	32
Full Length					
cm	30	36	39	44	48
in	11¾	14	15½	17¼	19
Sleeve Length					
cm	20	24	29	33	37
in	8	9½	11½	13	14½

### MATERIALS

#### Slipover

2 [3:3:4:4]50g Balls of West Yorkshire Spinners  
Bo Peep DK Main shade 305 Tin Man  
1 [1:1:1:1]50g Balls of West Yorkshire Spinners  
Bo Peep DK Contrast Shade 326 Pixie

#### Sweater

4 [5:5:6:6]50g Balls of West Yorkshire Spinners  
Bo Peep DK Main shade 725 Space Hopper  
1 [1:1:1:2]50g Balls of West Yorkshire Spinners  
Bo Peep DK Contrast Shade 686 Under-The-Sea

1 Pair of 4mm (UK8 – US6) Knitting Needles.  
1 Pair of 3.25mm (UK10 – US3) Knitting Needles.  
Safety Pin.





# Lil Dreamer



## — Hooded Cardigan & Sweater —



### MEASUREMENTS

#### To Fit Chest

cm	31	36	41	46	51
in	12	14	16	18	20

#### Actual Measurement

cm	41	46	52	55	61
in	16	18	20½	21¾	24

#### Full Length

cm	17	19	23	26	30
in	6½	7½	9	10¼	11¾

#### Sleeve Length

cm	8	12	15	17	20
in	3	4¾	6	6½	8½

### MATERIALS

#### Cardigan

3 [3:3:4:4]50g Balls of West Yorkshire Spinners Bo Peep DK shade 837 Hopscotch

#### Sweater

3 [3:3:4:4]50g Balls of West Yorkshire Spinners Bo Peep DK shade 834 Splash time

1 Pair of 4mm (UK8 – US6) Knitting Needles.

1 Pair of 3.25mm (UK10 – US3) Knitting Needles.

1 3.25mm (UK10 – US3) 80cm Circular Needle.

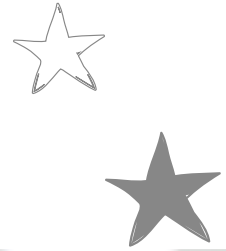
Stitch holders for Sweater.

4 [4:5:5:6] Buttons for Cardigan.



# Enchanted

## — Jacket & Cardigan —



### MEASUREMENTS

To Fit Chest					
cm	51	56	61	66	71
in	20	22	24	26	28
Actual Measurement					
cm	61	66	72	75	81
in	24	26	28½	29½	32
Full Length					
cm	30	36	39	44	48
in	11¾	14	15½	17¼	19
Sleeve Length					
cm	20	24	29	33	37
in	8	9½	11½	13	14½

### MATERIALS

#### Sweater

5 [5:6:7:8]50g Balls of West Yorkshire Spinners  
Bo Peep DK shade 305 Tin Man

#### Cardigan

5 [5:6:7:8]50g Balls of West Yorkshire Spinners  
Bo Peep DK shade 011 Tooth Fairy

1 Pair of 4mm (UK8 – US6) Knitting Needles.  
1 Pair of 3.25mm (UK10 – US3) Knitting Needles.  
1 3.25mm (UK10 – US3) 80cm Circular Needle.

Stitch holders.

6 [6:7:7:7] Buttons for Cardigan.