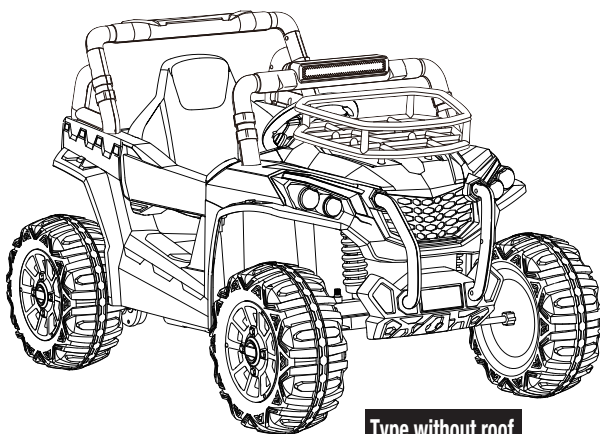


# UTV

BATTERY POWERED RIDE-ON

**KKUTV-014**



Type without roof

## Owner's Manual with Assembly Instructions

Styles and colo(u)rs may vary.  
Made in China.

The owner's manual contains important safety information as well as assembly, use and maintenance instructions.

The Ride-on Car must be assembled by an adult who has read and understands the instructions in this manual.

Keep the package away from children and dispose of properly before use.

**Keep this manual for future reference.**

On the purchase of your new Ride-On.

This ride-on will provide your child with many miles of riding of enjoyment. To help assure you and your rider a safe ride we ask you to please read this manual carefully, and keep it for future reference.

Follow the recommendations in this manual, they are designed to improve the safety and operation of your ride-on car and it's rider.

## SPECIFICATIONS:

<b>Battery</b>	12V10AH*1
<b>Charger</b>	12V1000mA

**Suitable age:** 37-96 months

**Load Capacity:** Under 30kg

**Speed:** 3-6 km/h

**Size of car:** without roof 118 \* 76 \* 73.5 cm

**Power way:** Charging type

**Charge time:** 8-12 hours

 **WARNING!**

- **CHOKING HAZARD** - Small parts. Not suitable for children under 36 months. The product contains small parts, keep children away when assembling.
- **ADULT ASSEMBLY REQUIRED.**
- Always remove protective material and poly bags and dispose before assembly.
- Protective equipment should be worn. Always wear shoes and sit in the seat when operating the vehicle.
- Only drive on level ground. Never use on the lawn.
- Never leave a child unattended.
- Keep your hands, hair, and clothes away from moving parts.

 **SAFETY**

The following safety hazards may result in serious injury or death:

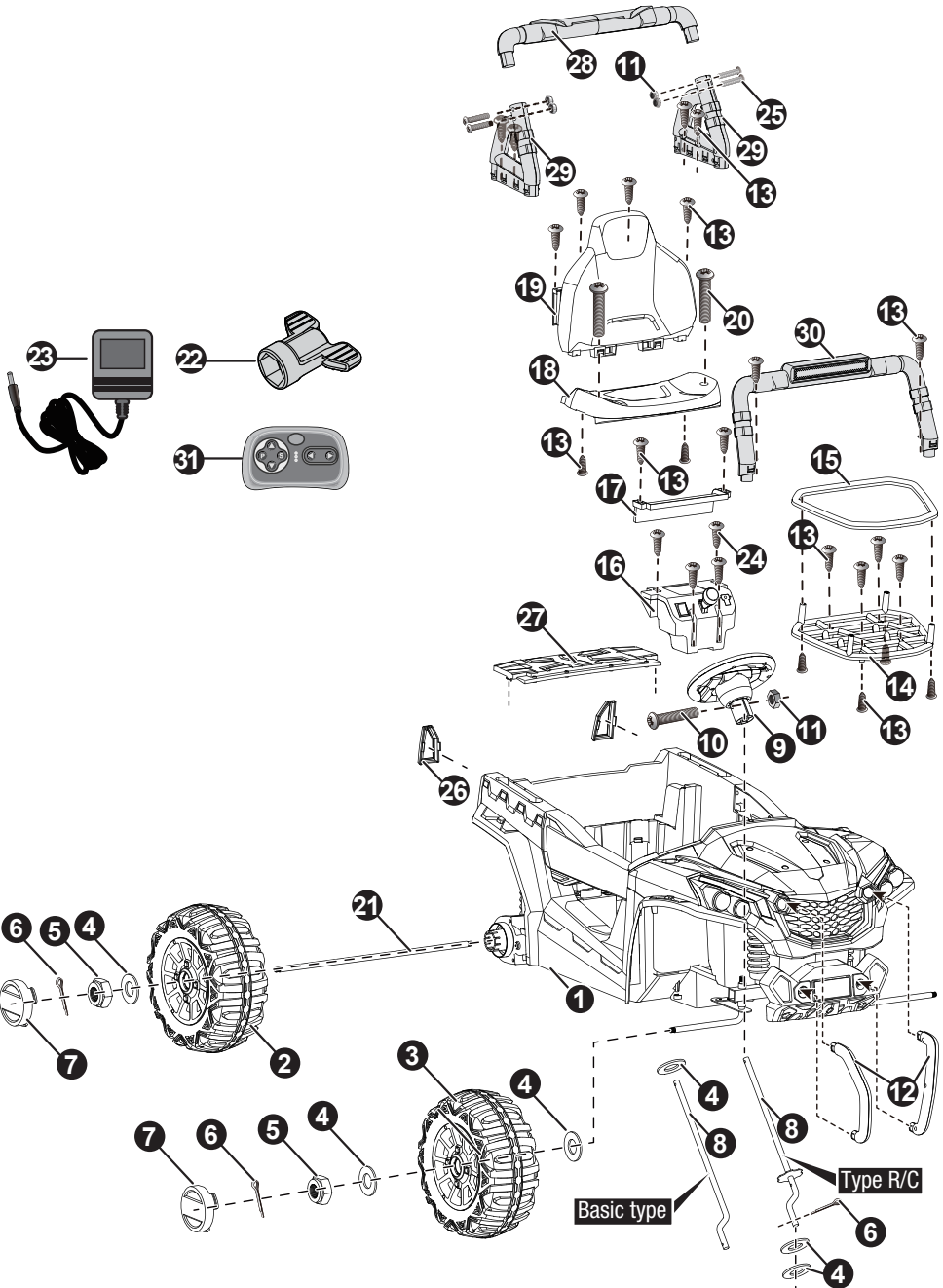
- Never leave child unattended. Direct adult supervision is required. Always keep child in view when child is in vehicle.
- To reduce the risk of injury, adult supervision is required. Never use in roadways, near motor vehicles, on or near steep inclines or steps, swimming pools or other bodies of water, always wear shoes, and never allow more than 1 rider.
- Never use in unsafe conditions such as snow, rain, loose dirt, mud, sand, or gravel, otherwise may result in an unexpected accident such as tipping over, and could damage the electrical system or battery
- Not to be used in traffic.
- This toy should be used with caution since skill is required to avoid falls or collisions causing injury to the user or third parties.
- This toy is unsuitable for children under 36 months due to its maximum speed; Maximum user weight is 30kg.
- This toy has no brake.

 **BATTERY INFORMATION**

- Non-rechargeable batteries are not to be recharged.
- Rechargeable batteries are to be removed from the toy before being charged.
- Rechargeable batteries are only to be charged under adult supervision.
- Different types of batteries or new and used batteries are not to be mixed.
- Batteries are to be inserted with the correct polarity.
- Exhausted batteries are to be removed from the toy.
- The supply terminals are not to be short-circuited.

# Parts Diagram | 3

HINT: Some parts shown are assembled on both sides of vehicle



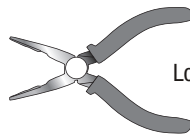
# Parts List | 4

PART NO.	PART NAME	Q'ty (pcs)		REMARKS
		without roof		
1	Vehicle body	1		
2	Rear wheel	2		
3	Front wheel	2		
4	Ø12 washer	8		
5	Lock nut	4		
6	Split pin	5		
7	Hubcap	4		
8	Steering column	1		
9	Steering wheel	1		
10	M5x35 machine screw	1		
11	Ø5 nut	5		
12	Front bumper	2		Left and right
13	Ø4x12 flat head screw	22		
14	Bakset base	1		
15	Bakset fence	1		
16	Shift lever assembly	1		
17	Protecting board	1		
18	Seat	1		
19	Seat back	1		
20	M5x16 machine screw	2		
21	Rear axle	1		
22	Spanner	2		
23	Charger	1		
24	Ø4x12 round head screw	4		
25	M5x25 machine screw	4		
26	Taillight cover	2		Left and right
27	Rear bed board	1		
28	Rear rollbar linkage	1		
29	Rear rollbar support	2		Left and right
30	Front rollbar	1		
31	Remote controller	1		For R/C type only

## Assembly tools required (not included):

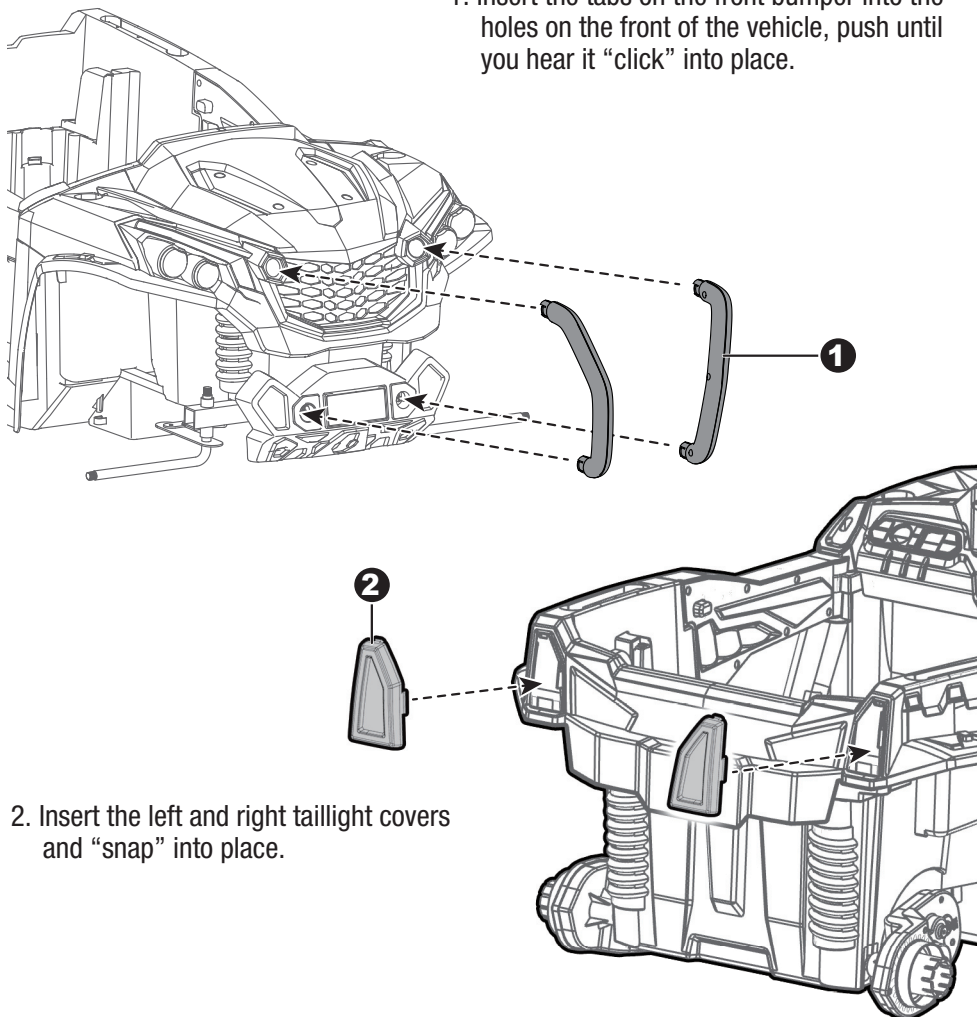


Screwdriver



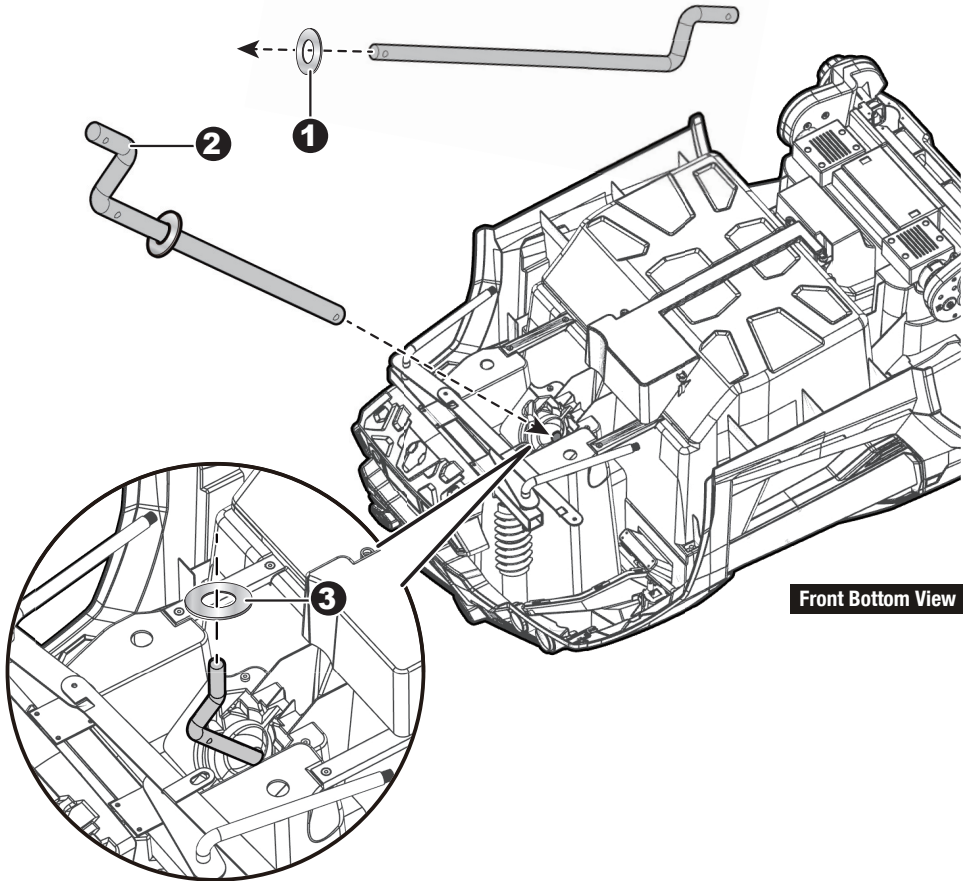
Long nose pliers

1. Insert the tabs on the front bumper into the holes on the front of the vehicle, push until you hear it “click” into place.



2. Insert the left and right taillight covers and “snap” into place.

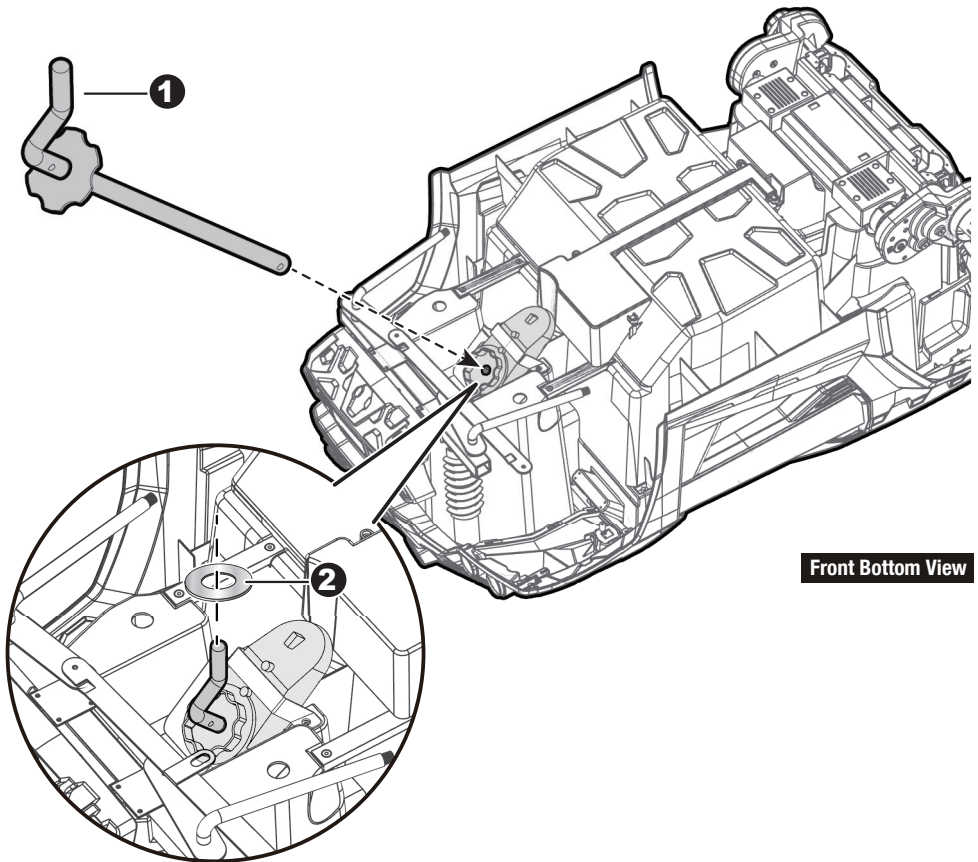
**HINT:** The follow steps only for the basic type.



Turn the vehicle body downside up.

1. Slide a  $\varnothing 12$  washer onto the steering column from the straight end.
2. Insert the straight end of the steering column through the hole on bottom of the vehicle body, and out through hole on the dash.
3. Slide a  $\varnothing 12$  washer onto the steering column from the bent end.

**HINT:** The follow steps only for the R/C type.

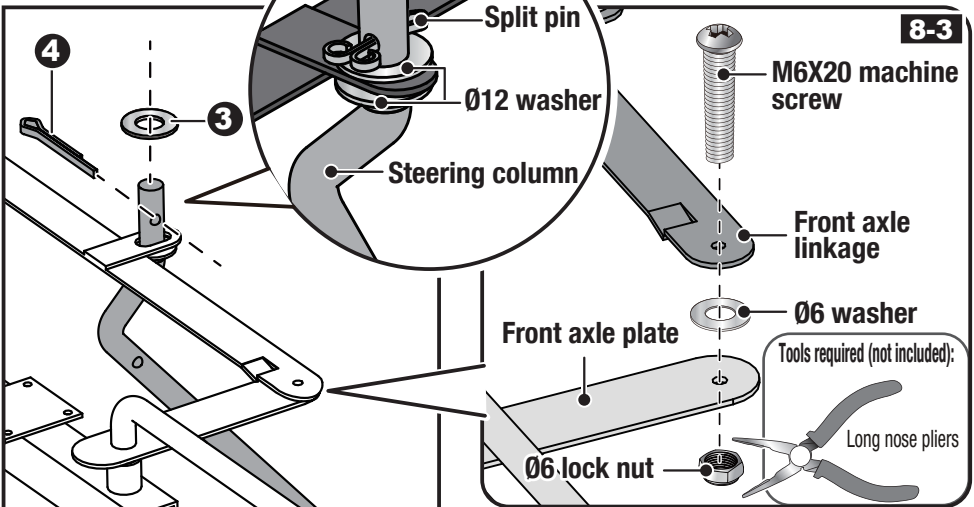
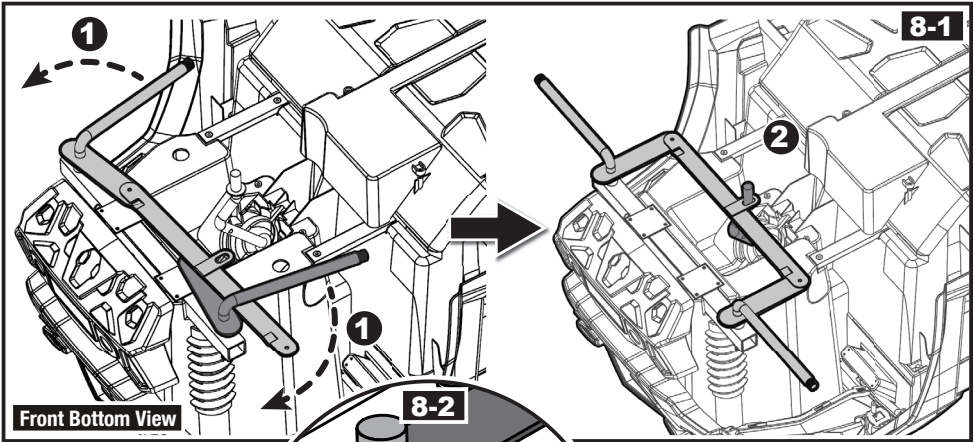


Front Bottom View

Turn the vehicle body downside up.

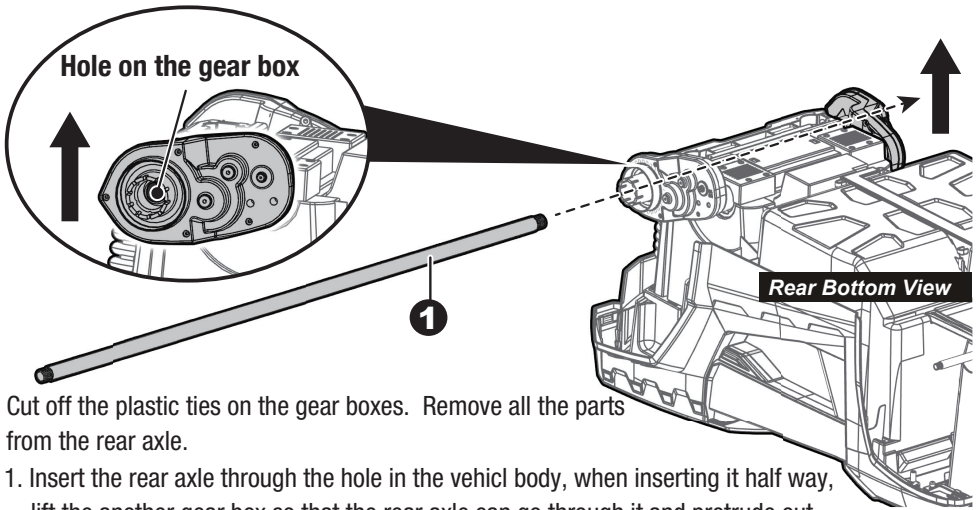
1. Insert the straight end of the steering column through the hole on the steering gear box, the hole on the vehicle body, and out through hole on the dash. Ensure the gear part on the steering column matches up with the steering gear box.
2. Slide a  $\varnothing 12$  washer onto the steering column from the bent end.





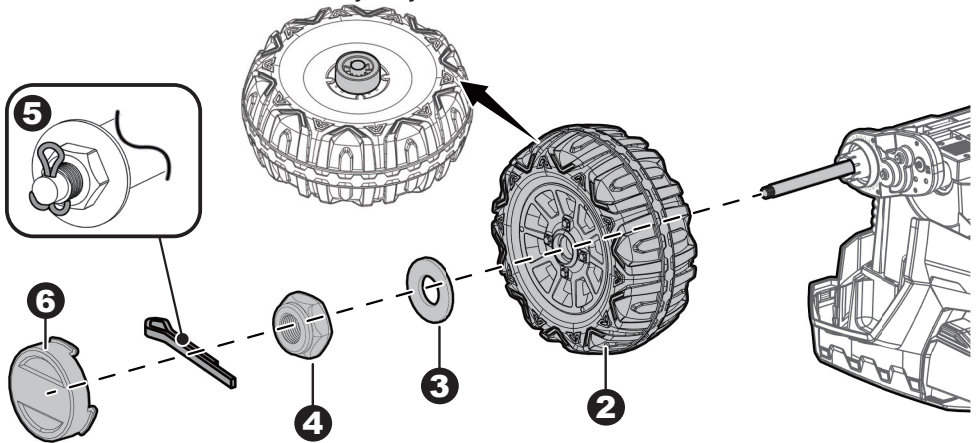
Cut off the plastic tie on the front axle with scissors.

- 1,2. Adjust the front axle plate so that the axle is in the correct position as shown (8-1);
3. Slide a Ø12 washer onto the steering column from the bent end.
4. Insert the split pin into the hole on the bent end of the steering column. Bend the ends of split pin back using a long nose pliers (not included).
5. Remove the M6x20 machine screw, Ø6 washer and Ø6 lock nut from the front axle linkage. Reinsert the M6x20 machine screw through the hole on the front axle linkage, the Ø6 washer and the hole on the front axle plate, then fasten the Ø6 lock nut to the opposite end of the screw with a **Long Nose Pliers(Not included)**.



Cut off the plastic ties on the gear boxes. Remove all the parts from the rear axle.

1. Insert the rear axle through the hole in the vehicle body, when inserting it half way, lift the another gear box so that the rear axle can go through it and protrude out. Make sure that the rear axle is centered with left and right ends exposed the same distance outside of the ride-on toy body.

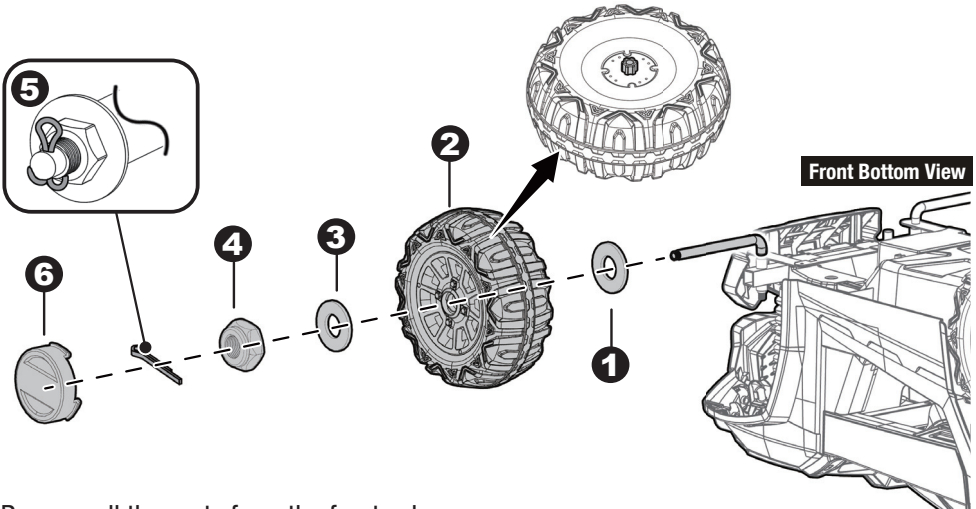


2. Slide the rear wheel onto the rear axle .
3. Slide the  $\varnothing 12$  washer onto the rear axle.
4. Tighten a lock nut to the end of the rear axle with a spanner.

Repeat the 2-4 steps for the other rear wheel.

HINT: An extra spanner has been provided to hold the Lock Nut on the other side of the rear axle while tightening the Lock Nut on the other side. DO NOT over tighten.

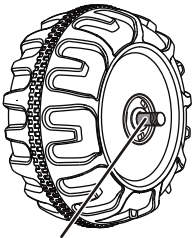
5. Insert a split pin into the hole on the each end of the rear axle. Bend the ends of split pins back using a long nose pliers (not included).
6. “Snap” a hubcap to each rear wheel.



Remove all the parts from the front axle.

1. Slide a  $\varnothing 12$  washer onto the front axle.
2. Slide a front wheel onto the front axle.
3. Slide a  $\varnothing 12$  washer onto the front axle.
4. Tighten a lock nut to the end of the front axle with a spanner. DO NOT over tighten.
5. Insert the split pin into the hole on the end of the rear axle. Bend the ends of split pin back using a long nose pliers (not included).
6. “Snap” the hubcap to the wheel.

Repeat the above procedure to assemble the other front wheel.



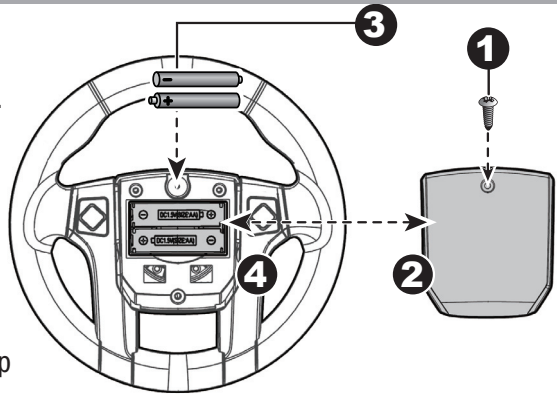
**GAP**

After assembling any wheel to the axles, please check the gap between the screw thread and the collapsible (refer to below picture), if the gap is too big, please add two or three washers inside the wheel, but after tightening the nut outside the wheel, please turn the wheel by your finger to check if the wheel can run smoothly, this is very important, because if the wheel can run smoothly, it is ok, but if the nut press the wheel and the wheel can't run smoothly, the motor will be broken easily! Then you need to decrease one or two washers to make sure the wheel can run smoothly!

## Attach the Steering Wheel | 11

**HINT:** If the steering wheel of your vehicle equipped with the sound function, please follow the steps 1-4 to add the batteries (Not Included), and refer to the battery information on page 2.

1. With a screwdriver remove the screw on the battery cover located in the center of the steering wheel.
2. Remove the battery cover from the top of the battery compartment.
3. Insert 2x1.5 AA batteries in their correct polarities.
4. Place the battery cover over the battery compartment and fasten with the screw you removed in step one.

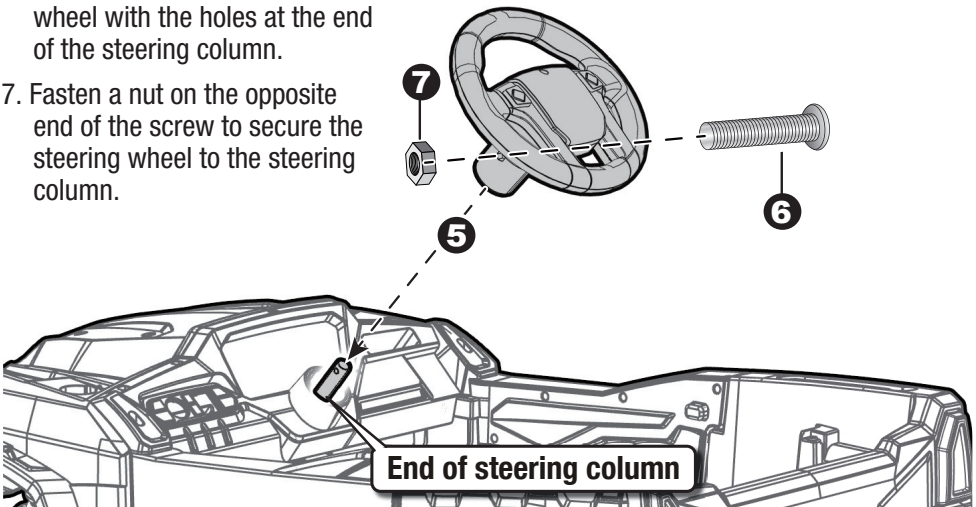


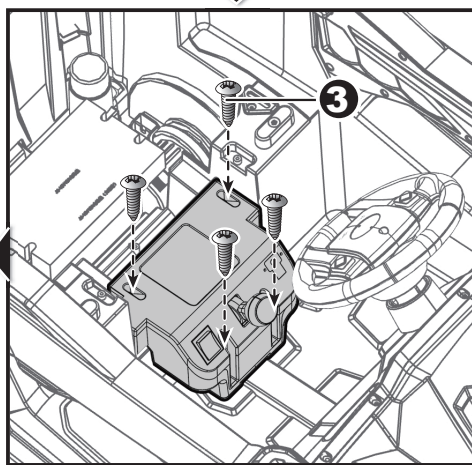
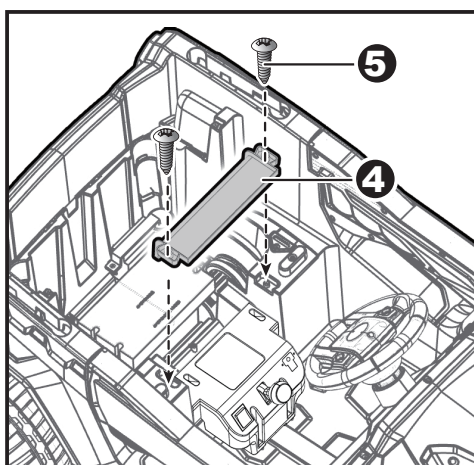
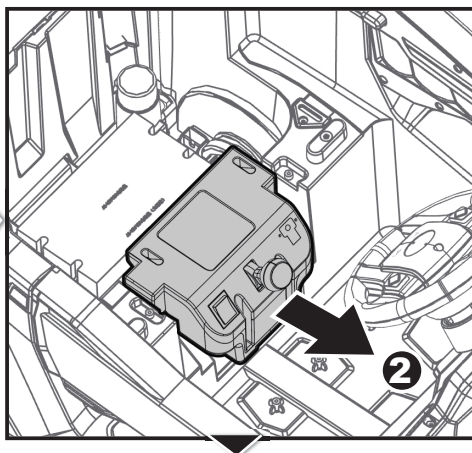
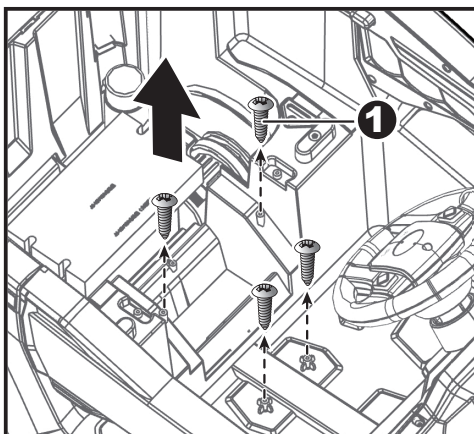
### Attach the Steering Wheel

Remove the M5x35 machine screw and  $\varnothing 5$  nut from the steering wheel.

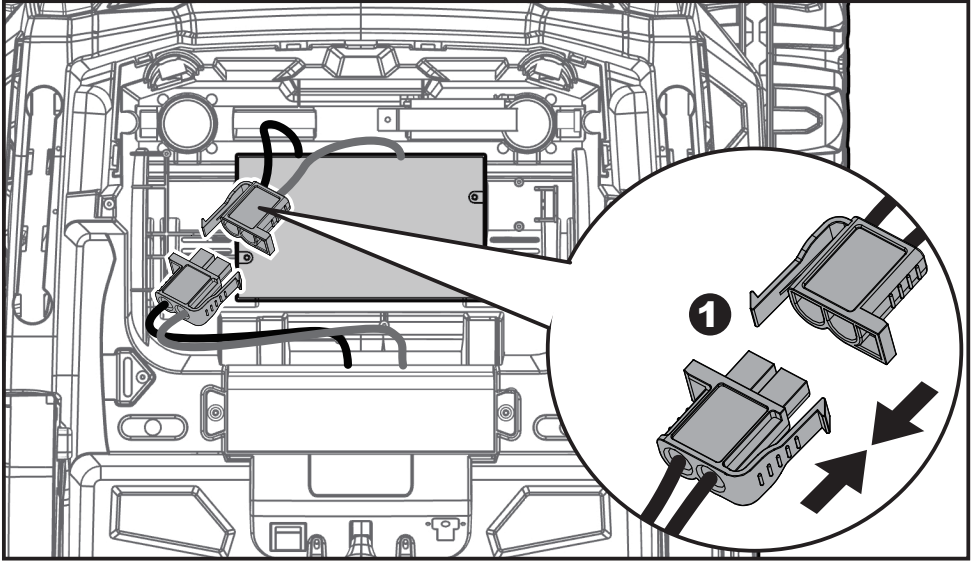
Turn the vehicle body upright.

5. Place the steering wheel over the the steering column, protruding from the middle of the steering wheel base.
6. Align the holes on each side of steering wheel with the holes at the end of the steering column.
7. Fasten a nut on the opposite end of the screw to secure the steering wheel to the steering column.

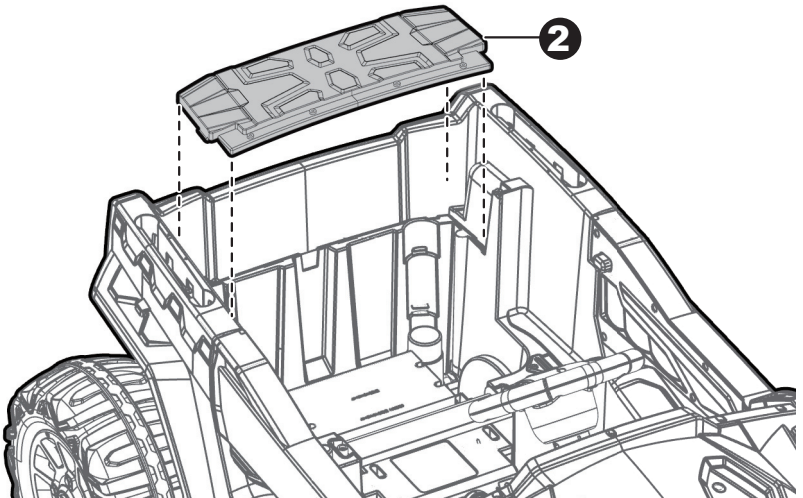


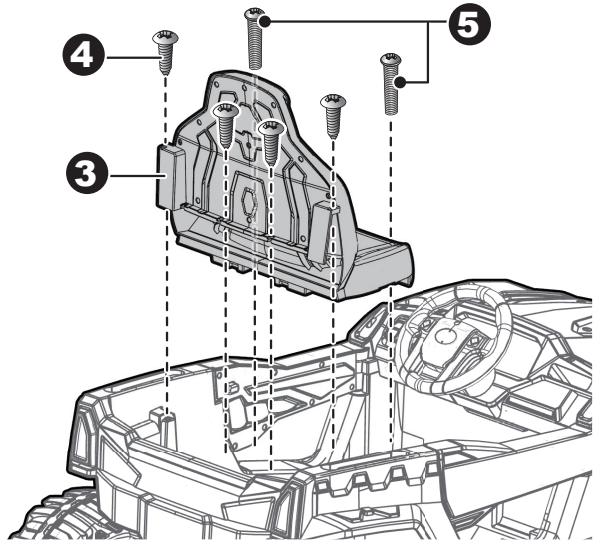
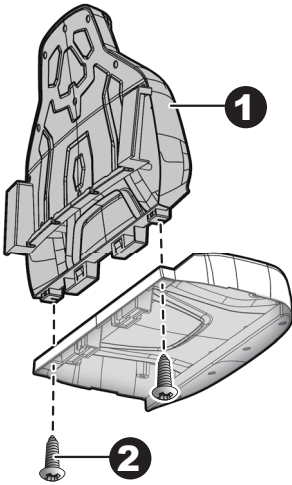


1. Lift up the shift lever assembly and remove the four **Ø4x12 round head screws** with a screwdriver.
2. Push the Shift Lever Assembly forward and locate it over the 4 screws mounting brackets as shown.
3. Secure it by tightening the four removed screws.
4. Fit the protecting board to the vehicle body.
5. Tighten securely with two **Ø4x12 flat head screws** with a screwdriver.

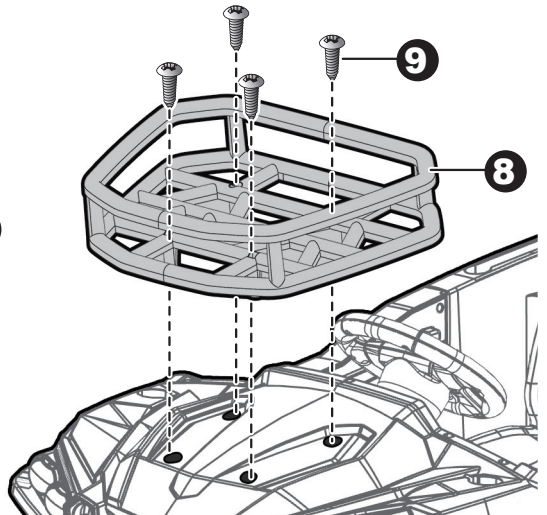
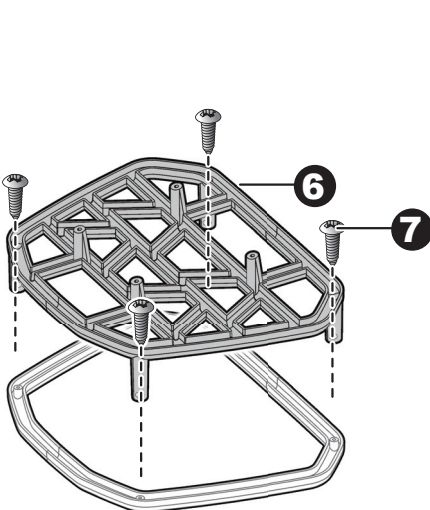


1. Plug the battery connector into the vehicle connector, push firmly.
2. Fit the tabs on the rear bed board into the slots located in the rear vehicle body, and press down until it “clicks” into place.

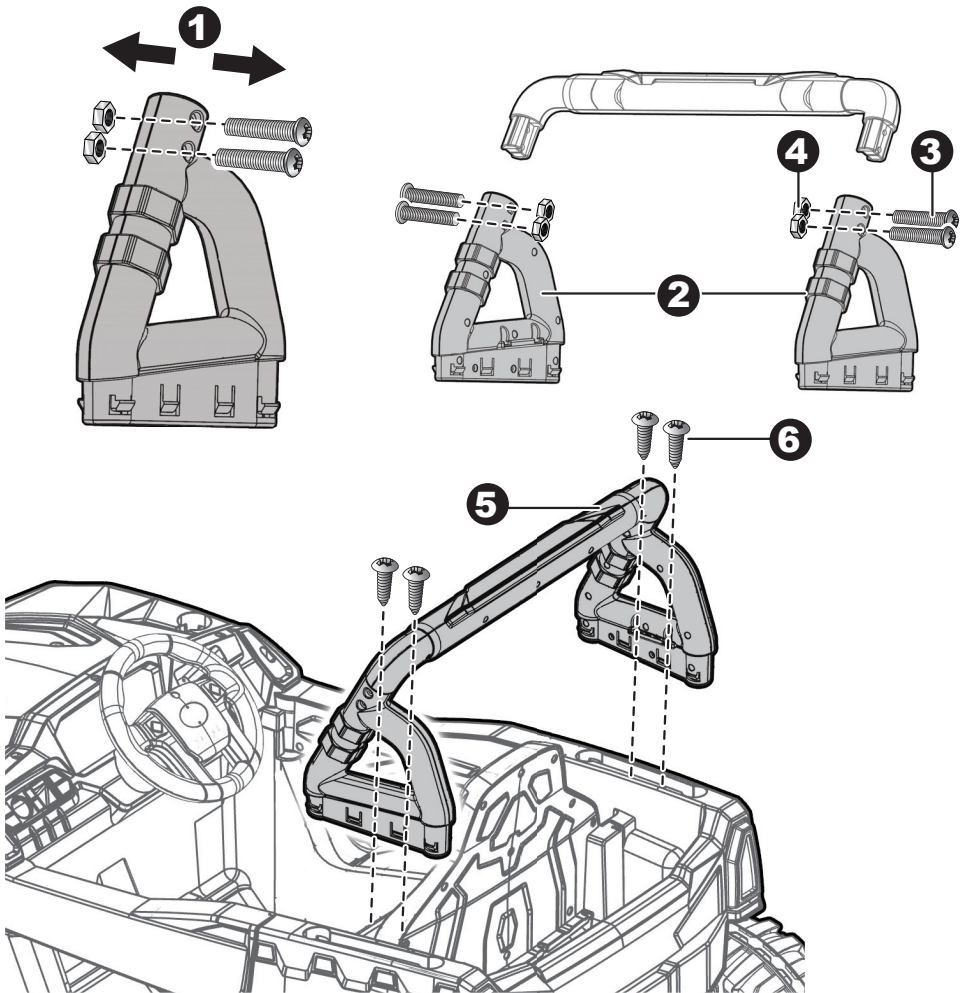




1. Fit the seat back to the seat.
2. Insert two  $\text{\O}4 \times 12$  flat head screws from the the bottom side of the seat, through the seat and into the seat back, and tighten.
3. Fit the seat assembly to the vehicle body.
4. Insert four  $\text{\O}4 \times 12$  flat head screws on the seat back and tighten.
5. Insert two M5x16 machine screws through the seat and into the vehicle body, and tighten with a screwdriver.
- 6-7. Fit the basket fence to the basket base, insert four  $\text{\O}4 \times 12$  flat head screws and tighten.
- 8-9. Fit the cargo basket to the bonnet. Insert four  $\text{\O}4 \times 12$  flat head screws and tighten.



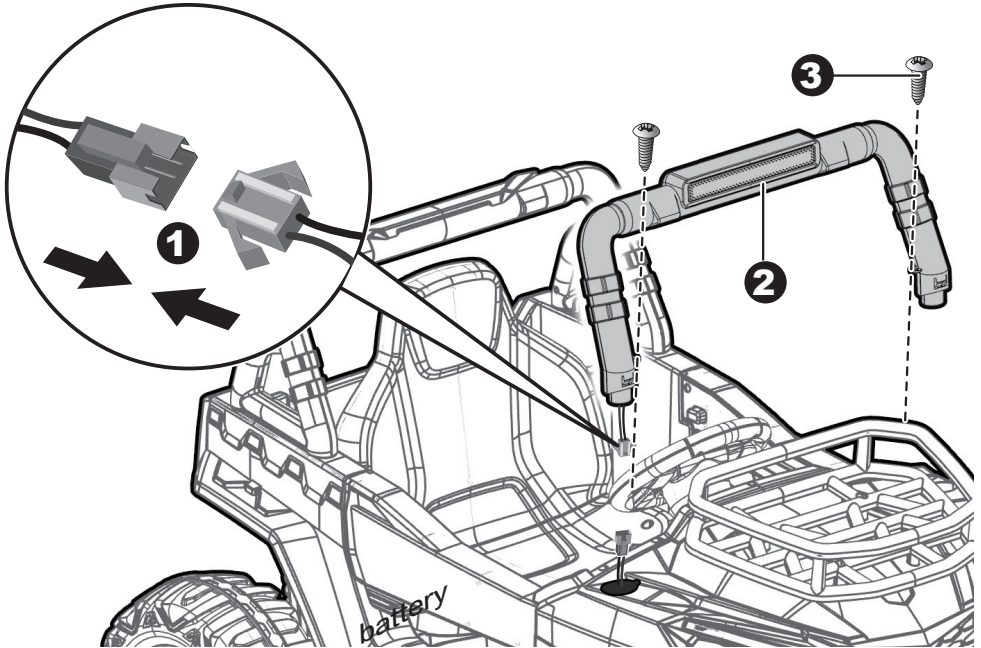
**HINT:** The follow steps only for the type without roof.



1. Unscrew the M5x25 machine screws and the Ø5 nuts on the left and right rear rollbar support.
2. Fit the rear rollbar support to the each side of the rear rollbar linkage.
- 3,4. Tighten two M5x25 machine screws and two Ø5 nuts on each side.
5. Fit the rear rollbar assembly to the vehicle body.
6. Tighten two Ø4x12 flat head screws on each side with a screwdriver.

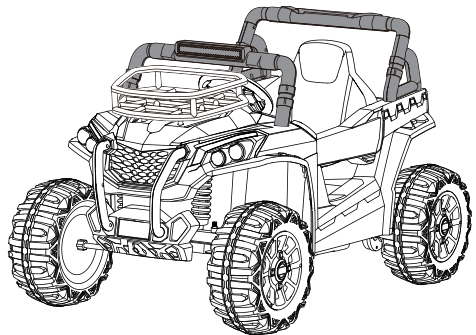


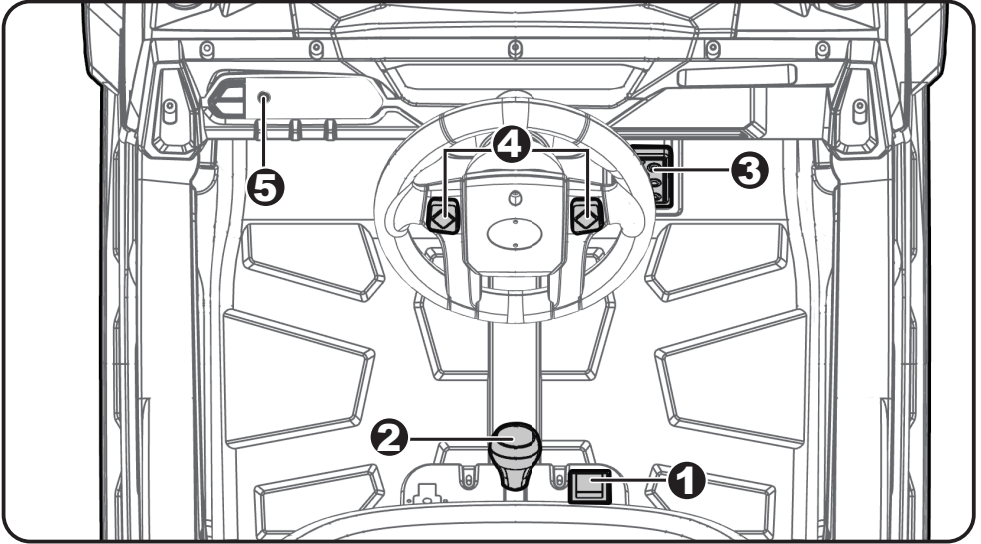
**HINT:** The follow steps only for the type without roof.



1. Connect the wire connector into the connector on the vehicle body as shown.
2. Insert and click the front rollbar into the two holes in front body.
3. Use two  $\varnothing 4 \times 12$  flat head screws to tighten and secure the front rollbar.

**Type without roof completed.**





1. **Power button:** Turns the vehicle on and off.
2. **Low speed forward/reverse shifter:** Changes the direction that vehicle moves from forward to reverse.
  - To move the vehicle forward, shift the lever to top position.
  - To move the vehicle backward, shift the lever to down position.
3. **Foot pedal:** Applies power (speed) to the vehicle.
  - To move the car, press the pedal down.
  - To brake or slow down, release pressure from the pedal.
4. **Sound buttons:** Press for sound playing.
5. **3.5mm AUX input:** Allow the audio from your portable music player or phone to be played through the vehicle speakers. MP3 format ONLY.

**⚠ IMPORTANT**

- **Always stop vehicle when changing the speed (if equipped) or direction to avoid damage the gears and motor.**

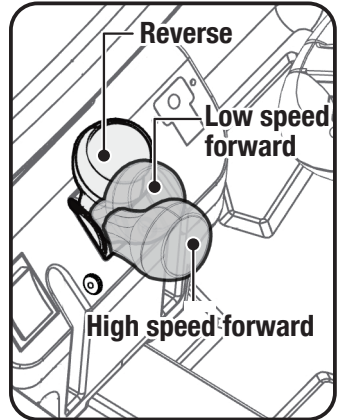
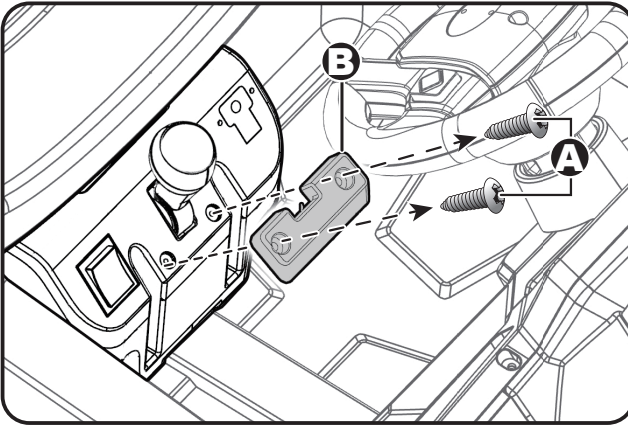


Use the vehicle on generally level ground ONLY!

DO NOT Use the vehicle on Lawn space!

## ⚠ IMPORTANT

- The High Speed Protective cover must be removed by an adult.
- Before remove the HIGH SPEED protective cover: Make sure your child knows how to steer, how to start and stop the product and knows the rules for safe driving.



- A. Remove the two screws on the top of the high speed protective cover with a screwdriver.
  - B. Remove the high speed protective cover.
- Then you can push the shifter into the “high speed” position.
- C. Press down the foot pedal.

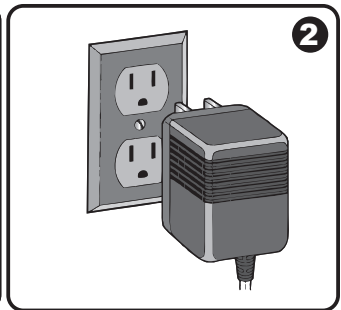
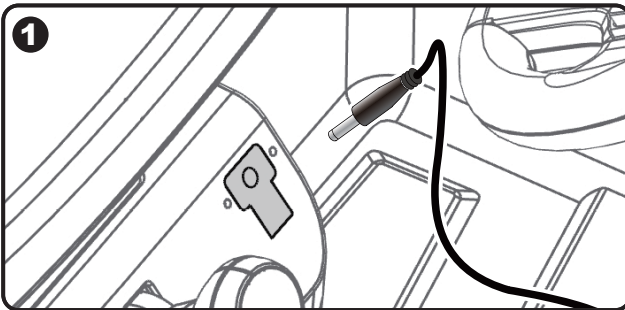
**HINT: The product is designed to operate in low speed only in reverse.**

**⚠ WARNING!**

- **ONLY an adult is allowed charge and recharge the battery!**
- **This product with Charging Protection: when charging, all functions will be cut off.**

- The POWER SWITCH must be turned in OFF position when charging.
- Before the first use, you should charge the battery for 4-6 hours. Do not recharge the battery for more than 10 hours to avoid overheating the charger.
- When the vehicle begins to run slowly, recharge the battery.
- After each use or once a month minimum recharge time as 8 to 12 hours, less than 20 hours at most.
- Use the only rechargeable battery and charger supplied with your vehicle. NEVER substitute the battery or the charger with another brand. Using another battery or charger may cause a fire or explosion.
- Do not use the battery or charger for any other product.
- If your ride-on with a Digital voltmeter(IF EQUIPPED), the magnitude of voltage will tell you how much power is remaining in the battery when you must recharge the battery. Make sure the vehicle is stop!

12V product	less than 12.5v	<b>The battery needs to be charge.</b>
24V product	less than 24v	



1. Plug the charger port into the input socket (the socket below the seat).
2. Plug the charger plug into a wall outlet. The battery will begin charging.

**Battery Disposal**



The battery will eventually lose the ability to hold a charge. Depending on the amount of use, and varying conditions, the battery should operate for one to three years.

**Important!** Recycle the dead battery responsibly. The battery contains lead acid (electrolyte) and must be disposed of properly and legally. It is illegal in most areas to incinerate lead acid batteries or dispose of them in landfills. Take it to a federal or state-approved lead acid battery recycler, such as local automotive battery retailer.

Do not throw the battery away with your regular household waste!

Problem	Possible Cause	Solution
Vehicle does not run	Battery low on power	Recharge battery.
	Thermal fuse has tripped	Reset fuse, see <Fuse>
	Battery connector or wires are loose	Check that the battery connectors are firmly plugged into each other. If wires are loose around the motor <b>contact your distributor please.</b>
	Battery is dead	Replace battery, <b>contact your distributor please.</b>
	Electrical system is damaged	<b>Contact your distributor please.</b>
	Motor is damaged	<b>Contact your distributor please.</b>
Vehicle does not run very long	Battery is under charged	Check that the battery connectors are firmly plugged into each other when recharging
	Battery is old	Replace battery, <b>contact your distributor please.</b>
Vehicle runs sluggishly	Battery low on power	Recharge battery, <b>contact your distributor please.</b>
	Battery is old	Replace battery, <b>contact your distributor please.</b>
	Vehicle is overload	Reduce weight on vehicle.
	Vehicle is being used in harsh conditions	Avoid using vehicle in harsh conditions, see <Safety>.
Vehicle needs a push to go forward	Poor contact of wires or connectors	Check that the battery connectors are firmly plugged into each other. If wires are loose around the motor, <b>contact your distributor please.</b>
	“Dead Spot” on motor	A dead spot means the electric power is not being delivered to the terminal connection and the vehicle needs repair. <b>Contact your distributor please.</b>
Difficult shifting from forward to reverse or vice-versa	Attempting to shift while the vehicle is motion	Completely stop the vehicle and shift, see <Use Your Ride-On>
Loud grinding or clicking noises coming from motor or gear box	Motor or gears are damaged	<b>Contact your distributor please.</b>
Battery will not recharge	Battery connector or adapter connector is loose	Check that the battery connectors are firmly plugged into each other.
	Charger not plugged in	Check that the battery charger is plugged into a working wall outlet.
	Charger is not working	<b>Contact your distributor please.</b>
Charger feels warm when recharging	This is normal and not a cause for concern	

Completely read through this manual and the troubleshooting guide table before calling. If you still need help resolving the problem **Contact your distributor please.**

- It is parents' responsibility to check main parts of the toy before using, Must regularly examine for potential hazard, such as the battery, charge, cable or cord, plug, screws are fastening enclosure of other parts and that in the event of such damage, the toy must not be used until that damage had been properly removed.
- Park the vehicle indoors or cover it with a tarp to protect it from wet weather.
- Recharge the battery after each use. Only an adult can handle the battery. Recharge the battery at least once a month when the vehicle raider is not being used.
- Do not wash the vehicle with a hose. Do not wash the vehicle with soap and water. Do not drive the vehicle in rainy or snowy weather. Water will damage the motor, electric system and battery.
- Clean the vehicle with a soft, dry cloth. To restore shine to plastic parts, use a non-wax furniture polish. Do not use car wax. Do not use abrasive cleaners.
- When not using, all the electrical source should be turn off. Turn off the power switch and disconnect the battery connection.

## Fuse

The battery features a thermal fuse with a reset fuse that will automatically trip and cut all power to the vehicle if the motor, electric system or battery is overloaded. The fuse will reset and power will be restored after the unit is turned OFF for 20 seconds and then turned ON again. If the thermal fuse trips repeatedly during normal use, the vehicle may need repair. **Contact your distributor please.**

To avoid losing power, follow these guidelines:

- Do not overload the vehicle.
- Do not tow anything behind the vehicle.
- Do not drive up steep slopes.
- Do not drive into fixed objects, which may cause the wheels to spin, causing the motor to overheat.
- Do not drive in very hot weather, components may overheat.
- Do not allow water or other liquids to come in contact with the battery or other electric components.
- Do not tamper with the electric system. Doing so may create a short, causing the fuse to trip.



**RISK OF FIRE. Do not bypass. Replace only with 25A fuse.**

**Our products are suitable for  
ASTM F963; GB6675; EN71 and EN62115 standard.**