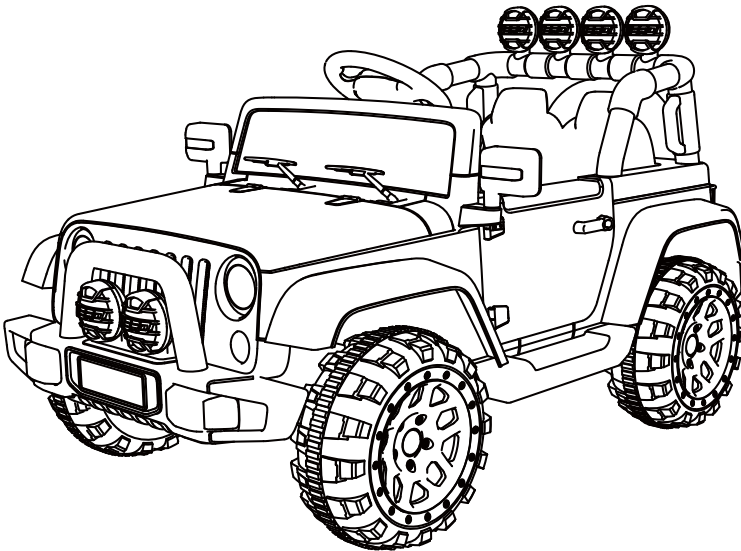


## Instruction for installation and use of KKNL-017 BEIRUIDOR

### Standards:

EN 71-1:2014-Mechanical and physical properties  
EN 71-2:2011+A1:2014-Flammability  
EN 71-3:2013+A1:2014-Migration of certain elements  
2005/84/EC- Determination of phthalate content  
EN 62115:2005/A12:2015-Safety of electric toy  
ASTM F963

- fast/slow selection
- multifunction remote
- 2.4 slow boot
- USB media play



Instructions to be read before use

Remember to keep the instruction for further reference

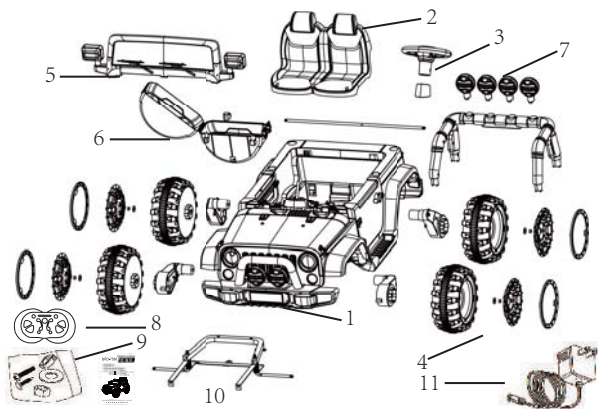
We sincerely hope our product could bring happiness to your kid and accompany your children for a joyful childhood. One extraordinarily crucial thing before using this product is to read the instructions carefully. It will tell you detailed installing steps and the right way to use it. It will also teach you how to avoid operation mistakes, so that you won't break this product and harm the rider. The most important thing is that it will tell you many attention rules that will keep you safe. Please remember these items and guide them to your children. Please keep it appropriately and put it in the place where you can acquire easily.

#### Specification

|                                |  |
|--------------------------------|--|
|                                | Dual-wheel                                 |
| Accumulator                    | 6V 4.5Ah*2 12V 4.5Ah*1                     |
| Motor                          | RS550PH-12V PRM4000, RS390SP-12V RPM16000  |
| Charger                        | Input AC220V-240V 50HZ-50HZ Output DC12V1A |
| Load limit                     | 30KG                                       |
| Using time                     | 1-2hours after charging                    |
| Speed                          | 3-3.5KM/H                                  |
| Age limit                      | 37-95months                                |
| Remote distance/remote battery | 15+-5M/ AAA1.5V*2                          |
| Size                           | 110*66*51CM                                |
| Gross weight                   | 16KG                                       |
| Net weight                     | 14KG                                       |
| Body material                  | PP   |

#### Matters need attention when charging

- Before the first use of the car, make sure the battery has been charged more than 4-6 hours, or the battery would be damaged permanently and cannot be repaired.(The charging process has to be operated by adults)
- When the battery is low, please charge it in time. Normally the charging hour is 8-12 hours, but do not charge it more than 15 hours.
- It is normal that the battery jar emits heat (below 60 centigrade), but when the temperature is too high, you should examine whether the recharging process is short-current.
- Only chargers and battery equipped by this car can be used. Chargers and battery jars of other brand are strictly prohibited. Or the charger and battery might be damaged.
- The car cannot be operated when charging.
- New/old and different kinds of batteries cannot be used together.
- Please check the circuit when the car is charging.
- When the product is packed away or will not be used for a long time, you have to fully charge the battery and charge it once every month to guarantee the life of the battery.
- The charger and battery are not toy. Children should not be allowed to play with them.



|   |                     |   |   |                  |   |    |             |   |
|---|---------------------|---|---|------------------|---|----|-------------|---|
| 1 | Body                | 1 | 5 | Windshield       | 1 | 9  | Screw pack  | 1 |
| 2 | Cushion             | 1 | 6 | Trunk            | 1 | 10 | Instruction | 1 |
| 3 | Steering wheel      | 1 | 7 | Rear searchlight | 4 | 11 | Charger     | 1 |
| 4 | Wheel & wheel cover | 4 | 8 | Remote           | 1 |    |             |   |

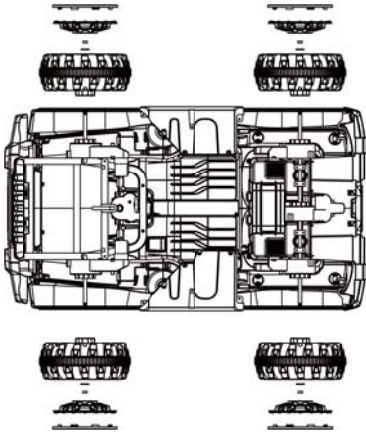
Attention: Please check the vehicle accessories before assembling!  
Warning!

- This product is only for 3-8 years old children.
- The assembling and charging process could only be operated by adults. Before use, please check whether all the part are installed well to position and connected tightly.
- This car cannot be used on dangerous places like streets, roads, slopes and raceways.
- This car should only be rode under adult's supervision.
- Do not change the structure, line and additional electrical devices without permission.
- Do not switch the forward/backward frequently.
- Examine the product and charger regularly to see whether the parts are becoming old or dropped off. When damage is found, the product should be stopped using until fixed.
- Only rechargeable batteries can be used.
- Batteries can only be interposed in right poses.
- Rechargeable batteries should be taken out before used-off.
- Positive and negative poles short circuit is strictly prohibited.
- Rechargeable batteries should only be charged by adults; when playing this car, the distance between the car and an adult cannot be more than 10 meters.
- Children cannot stand in the car.
- The car is outfit with seat belt. Make sure the child has fastened it.

Warning!

when change the gear, please make sure the car is completely stopped. Or it will damage the gear case and motor.

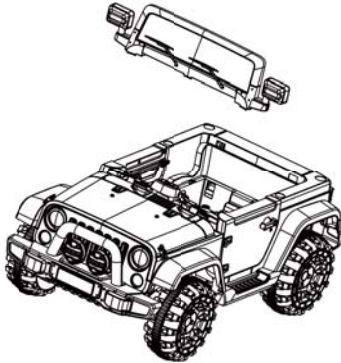
## Assembling steps



### 1: Installing front/rear wheel

- Turn the car body upside down. Place wheel on axle followed by washer. Secure with nut at end of axle. Then place wheel cover and secure by pushing clips in. See figure 1.

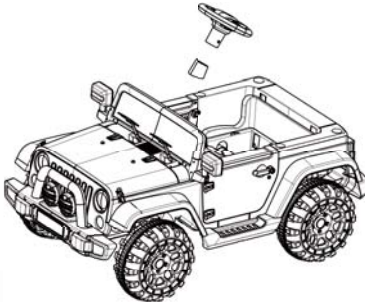
1



### 2: Installing windshield frame

- Line up the clips of the windshield with corresponding holes on car body. Press until you hear a click sound. See figure 2.

2

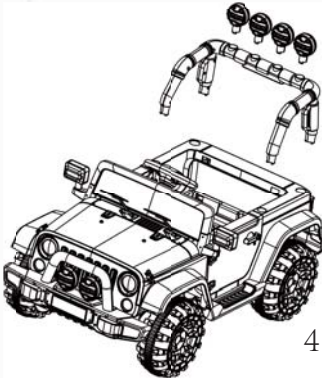


### 3: Installing steering wheel

- Connect the the wire of the steering wheel to the wire of the car. Then insert the steering wheel to the steering column. Align the screw hole on the steering wheel with the hole on the steering wheel. Insert and secure the steering wheel nut and bolt. See Figure 3.

3

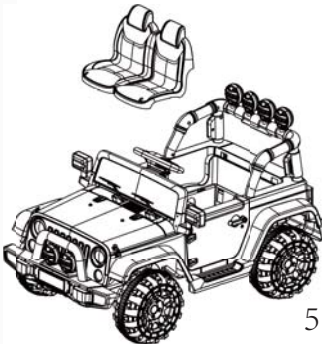
## Assembling steps



### 5: Installing rear searchlight & safe fencing

- Assemble safety fencing with 4\*10 screws first. Then clip the rear searchlights to the corresponding holes on the safety fencing. Finally attach the safety fencing to the car body by pressing clips to corresponding holes.

See figure 4.



### 6: Installing cushion

- Place the cushion at the specified location; place the clips into the holes on the car body. Secure using 4\*10 screws.

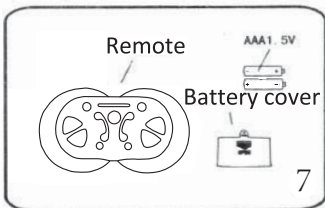
See figure 5.



### 7: Installing trunk

- Place the trunk at the specified location; place the clips in corresponding holes on car body and push to secure.

See figure 6.



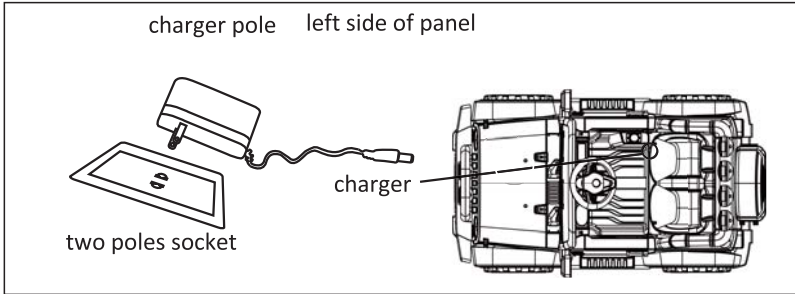
### 8: Installing battery of remote

- Open the cover according to the arrow; install 2 AAA batteries (not included). Finally replace the battery cover.

See figure 7.

## Charging

- Open the cover on the charging port.
- Plug the charger in to the charging port.
- Plug the charger in to the wall outlet.



### Warning!

- This product is only used for children older than 36 months. Keep packaging bags away from children. Bags can cause hazard for children.
- Keep the Instructions for future reference.

### Remote function

#### 1: Remote operation

- Do not switch forward/backward when using this product. Or it will damage the gear case and motor.
- Put in battery before using.
- Make sure the function is chose to "remote", so that remote does work.
- Remote can be used only under adult's supervision.

#### 2: Battery operation

- New/old and different kinds of batteries cannot be used together.
- Positive and negative poles short circuit is strictly prohibited.
- Non-rechargeable batteries cannot be recharged.
- Rechargeable batteries should be taken out before recharging.
- Batteries can only be interposed in right poles.
- Rechargeable batteries should only be charged by adults.
- Used batteries should be taken out of the toy and dealt properly to prevent kid's playing.

#### 3: Change the battery

- Use screw driver to screw off the battery cover and pull it off. Put in 2AAA batteries and put on the battery cover.

Simple maintenance

| Fault type                      | Reason analysis                                  | Exclusion methods                     |
|---------------------------------|--|---------------------------------------|
| Car's not moving                | Battery has low voltage                          | Recharge the battery                  |
|                                 | Battery is broken                                | Replace new battery                   |
|                                 | The nut of the wheel is dropped off              | Screw the nut on                      |
|                                 | Motor is broken                                  | Contact Customer Support              |
|                                 | Socket connector of the battery has been missing | Replace new socket connector          |
|                                 | Fuse wire is broken                              | Change a new fuse                     |
|                                 | Power is turned off                              | Turn on the power                     |
| Low speed                       | Battery is without power                         | Recharge the battery                  |
|                                 | Dead battery                                     | Change motor                          |
|                                 | Pavement irregularity                            | Ride on smooth-riding surface         |
|                                 | Overload   | Reduce weight                         |
|                                 | Battery is old                                   | Change new battery                    |
| Battery cannot be recharged     | Charger is broken                                | Change new charger                    |
|                                 | Socket connector of battery is broken            | Change new socket                     |
|                                 | There is no power                                | Plug it in                            |
| Short ride mileage              | Battery off                                      | Recharge the battery                  |
|                                 | Battery is old                                   | Change a new battery                  |
| Car is shaking when progressing | Connector cable for motor connected poorly       | Reconnect it                          |
|                                 | There's dead spot on the motor                   | Contact Customer Support              |
| Gear has noise                  | Gear case is broken or run out of lubricant      | Replace gear case or supply lubricant |
|                                 | Gear is broken                                   | Change a new gear                     |
| Circuit figure                  |  |                                       |

### Matters needing attention

- The product should be assembled correctly by adults before usage
- Keep away from children under 3 and over 8
- Battery charging process should be performed by adults
- Ensure a ten-hour-long charging process before the first use, otherwise the battery will suffer permanent damage
- Keep away from dangerous areas like street/road/slippery areas etc.
- For one person weighting less than 30kg only
- Make sure the safety belt fastened and the child seated. Dangerous actions as well as standing up are forbidden
- Do not press the forward/back button abruptly while driving
- Do not drive in narrow space, in order to avoid damage to the product
- Inspect car periodically. Pay close attention to ensure parts are attached securely.
- Pull out the battery during the long period without use
- The product should be used with adult guardianship
- Safe period for use: 3 years.

This product is only sold in mainland China