



**Little
Giant**

Ladders Australia

CLIMB ON™

**PRO LADDER CATALOGUE
AUSTRALIA**

Little Giant

Ladders Australia

CLIMB ON

COMPANY HISTORY

In the 1970's, Little Giant Ladder Systems chairman and founder, Harold "Hal" Wing, met a German painter who had an interesting idea and a primitive prototype of a new kind of ladder. Hal enhanced the ladder and engineered what is now known as the strongest, safest, most versatile ladder in the world—the Little Giant Ladder System. This professional-grade, multi-use ladder can be set up in 24 different positions and is probably the most famous ladder in the world. Hal performed demonstrations of the ladder nationwide at state fairs and trade shows, building and packaging orders out of his garage. Working side-by-side with his wife Brigitte and their seven children, Hal built the company on a foundation of quality and innovation. Gradually, both do-it-yourselfers and professionals all over the world have come to understand the Little Giant Ladder System is the best ladder in the world.

In 2003, Little Giant Ladder Systems' sales skyrocketed after the launch of an infomercial starring Hal Wing. Instead of painting a gimmicky picture, the infomercial clearly and concisely represented the ladder's benefits, forever establishing the Little Giant brand and its products as a household name.

From its humble beginning, Little Giant Ladder Systems is now one of the world's largest manufacturers of ladders, supplying products to discerning homeowners and professionals all over the world.

CLIMB ON®



ADJUSTABLE SAFETY

CAGE®

**FAST AND SAFE
ALTERNATIVE
FOR TEMPORARY
SCAFFOLDING**

Safe over uneven
surfaces and stairs

**COMPLY WITH
TIE-OFF RULES**

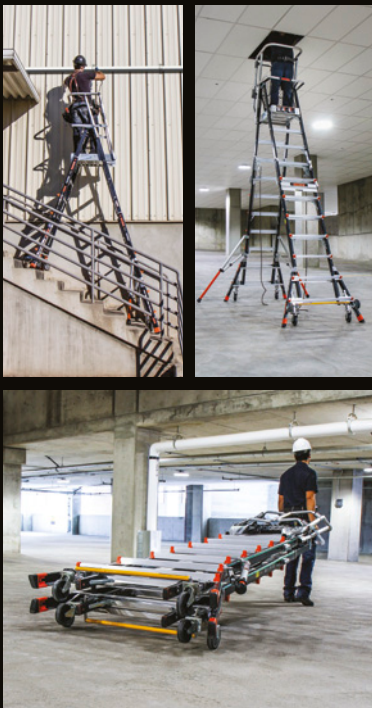
Self-enclosing
platform is a versatile,
safe alternative
to ordinary stepladders

**ADJUSTABLE
HEIGHTS**

Adjusts in one-foot
increments

**NONCONDUCTIVE
RAILS**

Safe for working
near electricity



**NONCONDUCTIVE
FIBERGLASS SIDE RAILS**

1-Year Limited Warranty • 150kg Australian Industrial Rating 1892.3:1996

Part Number	Model	Min/Max Standing Level	Max Reach*	Min/Max Footprint	Storage Height	Base Width	Storage Depth	Guardrail Height	Weight
18503-240**	3' - 5'	0.90 - 1.50m	3.50m	1.10 - 1.45m	2.35m	1.15m	0.45m	1.10m	45kgs
18509-240	5' - 9'	1.50 - 2.65m	4.60m	1.40 - 2.25m	2.95m	1.15m	0.45m	1.10m	57kgs
18515-240	8' - 14'	2.45 - 4.05m	6.05m	1.90 - 3.25m	3.85m	1.15m	0.45m	1.10m	67kgs

*A 1.7m tall person with a 30cm vertical reach
**Outriggers not available on 3'-5' models

Available Options: Includes Wheel Lift, Net

COMPACT CAGE

FAST AND SAFE ALTERNATIVE FOR TEMPORARY SCAFFOLDING

Safe over uneven
surfaces and stairs

GO WHERE OTHER AERIAL EQUIPMENT CANNOT GO

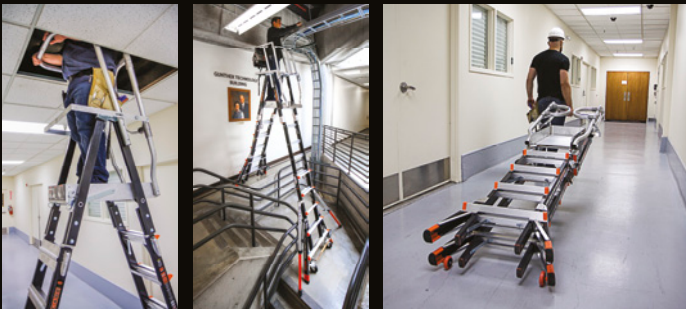
Designed to fit in
limited-access areas,
like drop ceilings

FITS IN LIMITED ACCESS AREAS

Goes where a mechanical
lift or ordinary stepladder
cannot go

COMPLY WITH TIE-OFF RULES

Self-enclosing platform
is a versatile, safe
alternative to
ordinary step ladders



**NONCONDUCTIVE
FIBERGLASS SIDE RAILS**

1-Year Limited Warranty • 150kg Australian Industrial Rating 1892.3:1996

Part Number	Model	Min/Max Standing Level	Max Reach*	Min/Max Footprint	Storage Height	Storage Width at Base	Storage Depth	Guardrail Height	Weight
19504	4' - 6'	1.20m - 1.75m	3.75m	1.25 - 1.60m	2.60m	0.75m	33cm	1.10m	33kgs
19506-244	6' - 10'	1.80 - 2.95m	4.90m	1.60 - 2.45m	3.20m	1.05m	33cm	1.10m	53kgs

*A 1.7m tall person with a 30cm vertical reach

Available Options: -244 Includes Wheel Lift, Outriggers, Side Tip Wheels, and Safety Net

SAFETY CAGE®

HELPS PREVENT FALLS DUE TO OVERREACHING

Fully enclosed platform with kick plate and midspan bar

TIME SAVER—NO MORE TYING OFF

Self-enclosing platform is a versatile, safe alternative to temporary scaffolding systems

AVOID INJURIES FROM MISSING THE BOTTOM RUNG

Ground Cue® indicator alerts user to last step

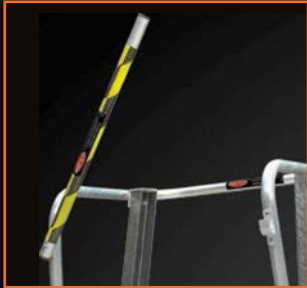


**NONCONDUCTIVE
FIBERGLASS SIDE RAILS**

1-Year Limited Warranty • 150kg Australian Industrial Rating 1892.3:1996

Part Number	Model	Comparable Stepladder Size	Stepladder Highest Standing Level	Stepladder Max Reach*	Spread	Step Width	Storage Height	Storage Width at Base	Weight
19602	2'	4'	0.55m	2.45m	0.90m	7.60cm	2.00m	0.65m	21kgs
19604	4'	6'	1.15m	3.10m	1.25m	7.60cm	2.60m	0.75m	24kgs
19606	6'	8'	1.75m	3.70m	1.65m	7.60cm	3.20m	0.85m	30kgs
19608	8'	10'	2.30m	4.25m	2.0m	7.60cm	3.80m	0.90m	35kgs
19610	10'	12'	2.85m	4.85m	2.40m	7.60cm	4.45m	1.00m	41kgs

*A 1.7m tall person with a 30cm vertical reach • Storage Depth: 15cm • Platform Size: 45cm x 55cm • Guardrail Height: 106cm



DUAL SAFETY BAR
WORK HANDS-FREE IN COMFORT

SAFETY HAND RAILS
SECURE HANDRAILS FOR CLIMBING UP AND DOWN

WIDE STEPS
COMFORT AND SECURITY



ENCLOSED LARGE PLATFORM
FEELS LIKE STANDING ON THE GROUND

TIP & GLIDE WHEELS
EASY TO MOVE AROUND

**NONCONDUCTIVE
FIBERGLASS SIDE RAILS**

1-Year Limited Warranty • 150kg Australian Industrial Rating 1892.3:1996

Part number	Model	Stepladder Height	Stepladder Max Reach*	Storage Height	Storage Depth	Platform Size	Footprint	Width at Base	Weight
19403	3 Step	0.90m	2.85m	2.1m	.53m	.41m X .52m	1.05m	.66m	16kg
19404	4 Step	1.2m	3.15m	2.4m	.53m	.41m X .52m	1.25m	.70m	17kg
19405	5 Step	1.5m	3.45m	2.7m	.53m	.41m X .52m	1.45m	.74m	20kg
19406	6 Step	1.8m	3.7m	3.0m	.53m	.41m X .52m	1.65m	.79m	21kg
19408	8 Step	2.3m	4.3m	3.55m	.53m	.41m X .52m	2.00m	.86m	25kg
19410	10 Step	2.9m	4.9m	4.53m	.53m	.41m X .52m	2.40m	.95m	31kg

*A 1.7m tall person with a 30cm vertical reach Comfort Step 33cm x 33cm

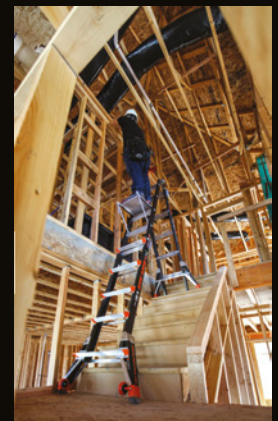
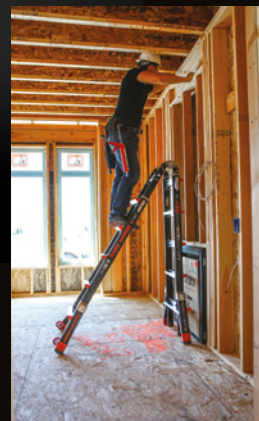


WORK SAFELY IN INDUSTRIAL APPLICATIONS

Fade-resistant, non-conductive fibreglass rated for industrial use.

LIGHTER AND EASIER TO USE

New black-resin fibreglass composite is lighter and stronger than any other fibreglass articulating ladder.



**NONCONDUCTIVE
FIBERGLASS SIDE RAILS**

1-Year Limited Warranty • 150kg Australian Industrial Rating 1892.3:1996

Part Number	Model	A-frame Min/Max height	A-frame Highest standing level	Extension Min/Max Height	Extension Highest Standing level	Min/Max Footprint	Storage Height	Storage Width at Base	Storage Depth	Weight
15143	13	0.90 - 1.50m	0.90m	2.15 - 3.35m	2.35m	0.80 - 1.20m	1.10m	0.74cm	25cm	16kgs
15147	17	1.2 - 2.15m	1.45m	2.75m - 4.5m	3.55m	0.94 - 1.60m	1.40m	0.74cm	25cm	19kgs
15145	22	1.5 - 2.75m	2.00m	3.35 - 5.80m	4.75m	1.12 - 2.00m	1.70m	0.74cm	25cm	21kgs

*A 1.7m tall person with a 30cm vertical reach

KING KOMBO™



INNOVATIVE 4-POSITION TOP CAP

- 1. Stud
- 2. Corner Out
- 3. Corner In
- 4. Wall Pad



V-rung to lean on corners, studs and poles while in the extension position

EXTENSION

Ground Cue®

AVOID INJURIES FROM MISSING THE BOTTOM RUNG

Patent-pending Ground Cue® indicator alerts user to last step



LEANING

STEPLADDER



NONCONDUCTIVE FIBERGLASS SIDE RAILS

1-Year Limited Warranty • 150kg Australian Industrial Rating 1892.3:1996 • Patents Pending

Part Number	Model	Stepladder Highest Standing Level	Stepladder Max Reach	Extension Highest Standing Level	Extension Max Reach*	Max Footprint	Storage Width	Storage Depth	Weight
13610-071	6'-10'	1.45m	3.10m	2.05m	3.85m	1.10m	0.60m	16cm	11kgs
13814-071	8'-14'	1.75m	3.70m	3.25m	5.20m	1.60m	0.70m	16cm	15kgs

*A 1.7m tall person with a 30cm vertical reach
Replace -071 with -074 to include Sure-Set™ Feet

LEAN, MEAN AND HI-VIZ GREEN™



DUAL WIDE-STANCE LEVELERS

Adapt to uneven surfaces and increase side-tip stability up to 600%



Up to 20cm of leveling adjustment



Outrigger control mechanism

SURE-SET™ FEET

Stays in position when you set it to either flat or spike mode



Built in dual-level indicators



NONCONDUCTIVE FIBERGLASS SIDE RAILS

1-Year Limited Warranty • 150kg Australian Industrial Rating 1892.3:1996 • Patents Pending

Part Number	Model	Extension Min/Max Height	Highest Standing Level	Max Reach*	Triangle Rung Width	Storage Height	Storage Width	Storage Depth	Weight
18816	16'	1.20 - 2.75m	2.90m	4.90m	2.55cm	2.60m	0.50m	15.25cm	18kgs
18820	20'	3.35 - 5.45m	4.05m	5.95m	2.55cm	3.25m	0.50m	15.25cm	21kgs
18824	24'	3.95 - 6.70m	5.20m	7.10m	2.55cm	3.85m	0.50m	15.25cm	24kgs
18828	28'	4.55 - 7.90m	6.35m	8.35m	2.55cm	4.45m	0.50m	15.25cm	27kgs
18832	32'	4.85 - 9.15m	7.50m	9.50m	2.55cm	5.10m	0.50m	15.25cm	30kgs

*A 1.7m tall person with a 30cm vertical reach

**Add V to end of the part number to replace the Pole Strap with a V-bar

THE LIGHTEST FIBERGLASS EXTENSION LADDER IN THE WORLD

LEAN

20% to 40% lighter than comparable extension ladders

MEAN

Strong Type IA or IAA-rated ladder tests 20% more rigid[†] than comparable extension ladders

HI-VIZ GREEN

Little Giant's patent-pending Hi-Viz Green is one of the most visible color hues to the human eye

LEAN, MEAN AND HI-VIZ GREEN™



Built in dual-level indicators



SURE-SET™ FEET

Stays in position when you set it to either flat or spike mode



**NONCONDUCTIVE
FIBERGLASS SIDE RAILS**

1-Year Limited Warranty • 150kg Australian Industrial Rating 1892.3:1996 • Patents Pending

Part Number	Model	Extension Min/Max Height	Highest Standing Level	Max Reach*	Triangle Rung Width	Storage Height	Storage Width	Storage Depth	Weight
18716	16'	2.70 - 4.25m	2.90m	4.90m	3.80cm	2.60m	0.45m	15.50cm	14kgs
18720	20'	3.35 - 5.45m	4.05m	5.95m	3.80cm	3.25m	0.45m	15.50cm	17kgs
18724	24'	3.95 - 6.10m	5.20m	7.10m	3.80cm	3.85m	0.45m	15.50cm	20kgs
18728	28'	4.55 - 7.90m	6.35m	8.35m	3.80cm	4.45m	0.45m	15.50cm	23kgs
18732	32'	4.85 - 9.15m	7.50m	9.50m	3.80cm	5.10m	0.45m	15.50cm	26kgs

*A 1.7m tall person with a 30cm vertical reach

**Add V to end of the part number to replace the Pole Strap with a V-bar

[†]Based on tests performed in controlled ANSI-compliant testing lab.

SAFETY STEP™

IT'S NOT JUST A STEPSTOOL

Spacious, sturdy steps feel like standing on the ground



Quick, stable, and strong



Folds to a thin, convenient storage size



Easy to move with Tip & Glide™ Wheels

1-Year Limited Warranty • 150kg Australian Industrial Rating 1892.1:1996

Part Number	Model	Highest Standing Level	Step Size	Max foot print	Storage Height	Storage Width at Base	Storage Depth	Weight
10210B	2 Step with bar	0.45m	35 x 23cm	0.60m	0.80m	55cm	13cm	8kgs
10210A	2 Step (no bar)	0.45m	35 x 23cm	0.60m	0.80m	55cm	13cm	6kgs
10310B	3 Step with bar	0.65m	35 x 23cm	0.90m	1.10m	55cm	13cm	11kgs
10310A	3 Step (no bar)	0.65m	35 x 23cm	0.90m	1.10m	55cm	13cm	9kgs
10410B	4 Step with bar	0.90m	35 x 23cm	1.15m	1.35m	55cm	13cm	14kgs
10410A	4 Step (no bar)	0.90m	35 x 23cm	1.15m	1.35m	55cm	13cm	12kgs
10510B	5 Step with bar	1.15m	35 x 23cm	1.15	1.65m	55cm	13cm	16kgs

JUMBO STEP™



COMFORT AND STABILITY

35cm x 22cm slip-resistant treads and stair-like design

LIGHTWEIGHT AND STRONG

Lighter than any comparable step stool, yet rated to hold 150kg

INNOVATIVE TOP CAP



SAFETY AND STRENGTH

Great traction over almost any surface



Limited Lifetime Warranty • 150kg Australian Industrial Rating 1892.1:1996

Part Number	Model	Highest Standing Level	Step Size	Max foot print	Storage Height	Storage Width at Base	Storage Depth	Weight
11902	2 Step with bar	0.45m	35 x 21cm	0.55m	0.80m	0.50m	10cm	5kg
11902-290	2 Step (no bar)	0.45m	35 x 21cm	0.55m	0.80m	0.50m	10cm	3kg
11903	3 Step with bar	0.65m	35 x 21cm	0.85m	1.10m	0.50m	10cm	7kg
11903-290	3 Step (no bar)	0.65m	35 x 21cm	0.85m	1.10m	0.50m	10cm	6kg
11904	4 Step with bar	0.90m	35 x 21cm	1.15m	1.40m	0.50m	12cm	9kg

LEVELER™



**Outside
Ladder
Assemblies**



**Hinge Lock
(Palm Button)**

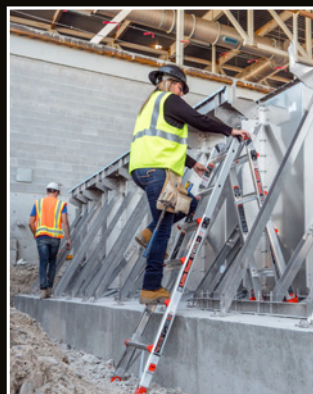
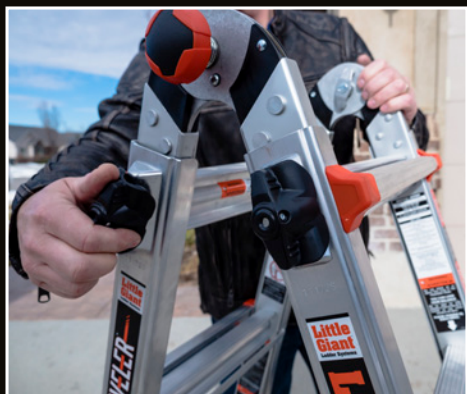
RAPID LOCK®

**Inner Ladder
Assembly**

**TIP & GLIDE™
Wheels**

Model 17 shown

**Ratchet
Leveler**



1-Year Limited Warranty • 150kg Australian Industrial Rating 1892.1:1996

Part Number	Model	A-Frame Min/ Max Height	A-Frame Highest Standing Level Max	Extension Min/Max Height	Extension Highest Standing Level Max	Storage Height	Storage Width at Base	Storage Depth	Weight
16517-801	M17	1.20 - 2.15m	1.50m	2.70 - 4.50m	3.55m	1.40m	0.60m	22cm	16kgs
16522-801	M22	1.50 - 2.75m	2.00m	3.35 - 5.80m	4.75m	1.70m	0.70m	22cm	20kgs
16526-801	M26	1.85 - 3.35m	2.60m	3.95 - 7.00m	5.90m	2.00m	0.76m	22cm	24kgs

**PATENTED
ROCK LOCK®
ADJUSTERS**

Easier than ever
to use

**TIP & GLIDE™
WHEELS**

Easier than ever
to use



LIGHTWEIGHT

15% lighter than
the competition



Work safely next to fragile surfaces with 90-degree position



Legs adjust for 90-degree access mode



Use as multiple sizes of step-ladders

1-Year Limited Warranty • 150kg Australian Industrial Rating 1892.1:1996

Part Number	Model	A-frame Min/Max height	A-frame Highest standing level	Extension Min/Max Height	Extension Highest Standing level	Max Footprint	Storage Height	Storage Width at Base	Storage Depth	Weight
15413-001	13	0.95 - 1.55m	0.90m	2.15 - 3.35m	2.35m	1.20m	1.10m	0.60m	0.20m	11kgs
15417-001	17	1.20 - 2.15m	1.45m	2.75 - 4.50m	3.55m	1.60m	1.40m	0.60m	0.23m	14kgs
15422-001	22	1.50 - 2.75m	2.00m	3.35 - 5.80m	4.75m	1.95m	1.70m	0.65m	0.23m	18kgs
15426-001	26	1.85 - 3.35m	2.60m	3.95 - 7.00m	5.90m	2.40m	2.00m	0.80m	0.23m	22kgs

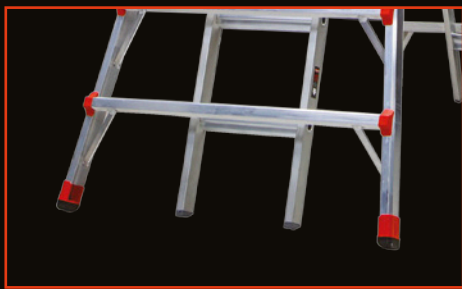
Sky Scrapper



**TELESCOPING
A-FRAME**

Spring-assisted hinges and telescoping sides let you go where expensive powerlifts can't go

Rated at 150kg each side



EXTRA WIDE FLARED LEGS
Superior stability at extreme heights



1-Year Limited Warranty • 150kg Australian Industrial Rating 1892.1:1996

Part Number	Model	A-frame Min/Max height	A-frame Highest standing level	Min/Max Footprint	Storage Height	Storage Width at Base	Storage Depth	Weight
10110	17	2.75 - 5.20m	4.40m	1.80 - 3.95m	2.90m	0.95m	20cm	36kgs
10121	21	3.35 - 6.40m	5.55m	2.10 - 5.05m	3.55m	1.10m	20cm	58kgs

ACCESSORIES

PROJECT TRAY™ (15012)

The Project Tray offers one convenient location for all of your tools. It includes slots for power cords, screwdrivers, knives and other tools along with recessed trays for paint containers and a magnetic dish for loose nails, screws, nuts and bolts. It can even hold your drink while you work.

The tray fits to any Little Giant Multi-use ladder and holds up to 12kgs.

Compatible with:

Classic, Dark Horse, Skyscraper, Xtreme, Velocity, Leveler



CARGO HOLD™ (15040)

The Cargo Hold allows you to keep all your tools at arms reach and reduces trips up and down the ladder. It consists of pockets and pouches to help organise your tools in a neat and orderly fashion. Store it inside the ladder or move it to the outside rung for easy access.

Compatible with:

Dark Horse, MegaMax, Xtreme, Skyscraper, Velocity, Leveler



AIRDECK (26057)

The Airdeck can be used as a safety handrail and provides confidence and comfort when climbing up and down the ladder.

The other main feature is the tool tray. This is designed to accommodate screwdrivers, drills, hammers paint tins and more. It includes a magnetized section keeping loose screws and nails in place. The tray is rated to hold 11kgs.

Compatible with: Select Step, Xtreme, Megamax



WORK PLATFORM (10104)

The Work Platform fits on any rung and is rated up to 150kgs.

It's primary use is to act as a wide platform to stand on which reduces foot and leg fatigue when standing on rungs for an extended period of time. It simply slides out and kicks back in when not in use. A second platform can be used as a tool/paint tray.

Compatible with:

Dark Horse, MegaMax, Xtreme, Skyscraper, Velocity, Leveler



TELESCOPING PLANK

The work planks convert any of our multi-use ladders into simple scaffolding. This high-strength plank, rated to hold 120kgs enables a person to stand and use both hands while on the ladder.

They are available in 3 sizes:

Small - 1.8m to 2.75m (10069A) Medium - 2.45m to 3.95m (10813A) Large - 3.05m to 4.90m (11016A)

Compatible with:

Dark Horse, Xtreme, Velocity, Leveler



WING SPAN™ WALL STANDOFF (10111A)

The Wing Span Wall Standoff is perfect for working around windows, gutters, or any other obstacle that attempt to prevent you from safely completing your task.

The extra width also adds more stability and versatility when attached in the extension position.

Compatible with:

Dark Horse, MegaMax, Xtreme, Velocity, Leveler



LEG LEVELER

The Leg Leveler is used to stabilize our ladder systems on uneven surfaces ensuring your work environment is as safe as it possibly can be.

Compatible with:

Classic Leg Leveler (10106A) Xtreme Leveler (12106)



TRESTLE BRACKETS

Our Trestle Brackets allow you to convert your Ladder into two fixed trestles. Add a Little Giant Telescopic Plank to create a scaffold type set up, reducing the amount of trips required to adjust the ladder.

Trestle Brackets are a different size for each of the ladders below:

Xtreme (26260), Dark Horse (56480), Velocity/Leveler (26999)



SADDLE BAG (15072)

The Little Giant Saddle Bag™ lets you keep everything you need to get the job done with you where you really need it. No more climbing up and down the ladder to get a tool or a handful of nails. The Saddle Bag™ is made out of 680D ballistic polyester and features easy-access pouches for tools or materials. The Saddle Bag™ will work on any Little Giant Aerial Safety Cage & Compact Cage ladder, and it folds and stores neatly inside any Little Giant Cage.



INTEGRATED DISTRIBUTION Pty Ltd
www.integrateddist.com.au
peter@integrateddist.com.au
Sales 1300 339 571

**Little
Giant**

Ladders Australia

CLIMB ON

Preventing Injuries, Saving Lives

Every day nearly 2,000 people are injured while using a ladder. Nearly 100 of them suffer a long-term or even permanent disability. And every day, one person dies, never returning home to their family and friends. These numbers are staggering when you think of each individual's life, and especially the people who love them.

We are driven not by the number of ladders we build, but by the individuals who use them—the hard-working men and women of the world who are the backbone of industry and progress. They put their lives at risk to make things happen. They are dedicated working people with families, hopes and dreams.

If we can help one more of these people get home safely each day, we will have done our job—that's what gets us out of bed each morning. Ladders will always be a necessity in nearly all walks of life, so we need to find ways to prevent these accidents and save lives.

We believe there are two ways to prevent these accidents: First, providing effective, frequent, and relevant safety training; and second, designing safer climbing and access equipment.

Designing for Human Nature

Although it is extremely important, training alone is not enough. Even an experienced, well-trained professional can fall off an ordinary traditional ladder. Our new professional climbing equipment will help operators avoid the three most common causes of both OSHA safety citations and ladder-related injuries and fatalities.

1. Repeated handling of heavy climbing equipment
2. Using the wrong ladder for the job; using the right ladder the wrong way
3. Overreaching

In an era of worldwide progress and innovation, the traditional designs sold by most ladder companies have remained all but unchanged, even though the incidence of ladder injuries increase each year. The ladder industry can do better; and we are leading the charge. We engineer our professional access equipment to prevent as many falls as possible. It is better to build a fence at the top of a cliff than to park an ambulance at the bottom.

The Future of Climbing Equipment

We developed this new professional line of access equipment with numerous features and safeguards that combat the common misuses of ladders. Little Giant has taken the next step in climbing safety by creating products engineered to protect the users with designs that account for human behaviour.

Perhaps our long-held manufacturing creed sums up our commitment to provide the safest access equipment in the world—every weld, every rivet, every rung, and every person matters!

Little Giant Ladders Australia - CLIMB ON®