

Reverse Weave Texture

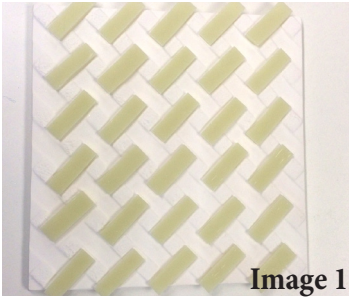


Image 1

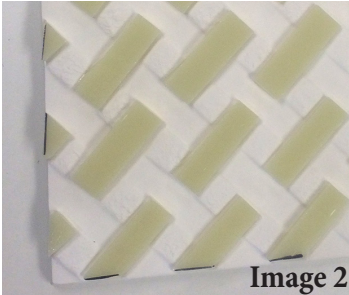


Image 2

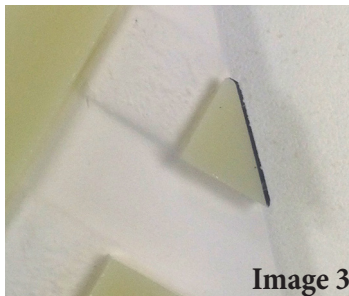


Image 3

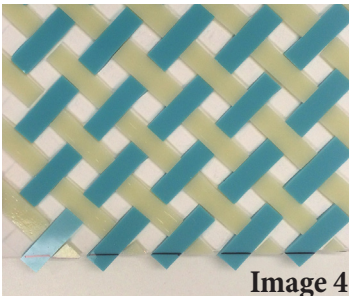


Image 4



Image 5

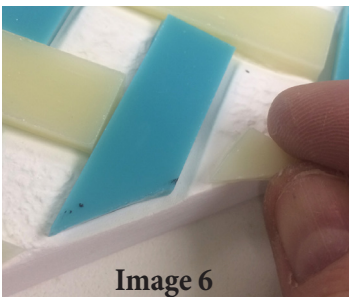


Image 6

Materials Needed:
 Creative Paradise products: [GM132](#)
[GX18](#)
 COE 96 Glass-
 Vanilla Cream, Peacock Green, Clear
 Standard
 Super Glue
 Glass separator (Zyp preferred)
 Glass Cutter

General Instructions:
 Begin by treating the molds with the glass separator spray in a ventilated area. We recommend ZYP. Several light coats with a short waiting period between coats is preferable to one heavy coat. Shake the can well before use and hold the can upright while using to assure proper distribution of product. It is important to turn the mold to make sure you coat the mold cavity at all angles. [Click here for a tutorial on applying the ZYP.](#)

Cut 30 strips of Vanilla Cream that are $1/2'' \times 1 \frac{5}{8}''$. Place the strips in grooves going one direction in the mold (image 1). Some of the strips will hang over the edge of the mold. Use a ruler and a sharpie to mark the strips that are on the edge ($1/16''$ in from the edge of the mold) and cut the ends of the strips off (image 2). The ends of the strips work perfectly to fill the unfilled small grooves at two sides of the mold (image 3).

Follow the technique above using thirty $1/2'' \times 1 \frac{5}{8}''$ strips of Peacock Green to fill the remaining grooves in the mold including the small grooves at the edge (image 4).

Cut a $8.5'' \times 8.5''$ piece of Clear Standard glass. This glass will be placed over the strips on the mold (image 5). It is helpful to use Super Glue to glue the edge of the small triangle piece of glass to the strip they are making contact with, so that they remain in place (image 6). Place the mold in the kiln and the Clear Standard over the strips on the mold. Fire the glass using the firing schedule given in Table 1.

After its been fired remove the fused glass from the mold. Use soapy water to remove any glass separator from the fused glass. Slump the weave glass texture side down in mold GM132 (apply glass separator to the mold prior to slumping) using the firing schedule found in Table 2.



Image 7



Table 1*			
Segment	Rate	Temp	Hold
1	275	1215	45
2	50	1250	20
3	275	1460	0
4	9999	950	60

Table 2*			
Segment	Rate	Temp	Hold
1	275	1215	45
2	9999	950	60

*See "firing notes" to determine if this temperature is correct for your kiln