



Silent Gliss Child Safety

Practice Guide



Content

1. Child Safety for blinds	3
2. When is Child Safety required?.....	4
3. What types of safety devices are available from Silent Gliss?	5
4. Length of operating cords and chains	7
5. Product labelling	8
6. Product identification.....	8
7. Fitting sheets	9
8. Packaging.....	9
9. Measure sheets	9
10. Point of sale literature.....	10
11. Terms and conditions of sale	10
12. Fitting service	10
13. Certification.....	10
14. Summary key requirements of EN13120.....	11



1. Child Safety for blinds

As children grow, so does their curiosity with the world around them. Every day, household objects can be dangerous to infants. Chains and cords from curtains or blinds have been identified as a potential risk to small children.

1.1 New legislation

Over recent years a number of children have died from strangulation on a blind operating cord. As a result of this the CEN (European Committee for Standardisation) has revised the child safety standard for internal blinds – EN 13120. This standard is now accompanied by two new standards:

- EN 16433 which deals with the test methods for ensuring safe finished products, and,
- EN 16434 which deals with the specific test requirements of safety devices used in the manufacture of blinds.

Note: This legislation refers specifically to the manufacture and supply of blinds, not curtain tracks. However, Silent Gliss recognise that these same risks exist on any corded window treatment and will therefore apply all elements of the legislation to corded curtain tracks.

The scope of this document is to clarify the key elements of this legislation in relation to Silent Gliss products. It only covers the products within our range which are affected by the changes.



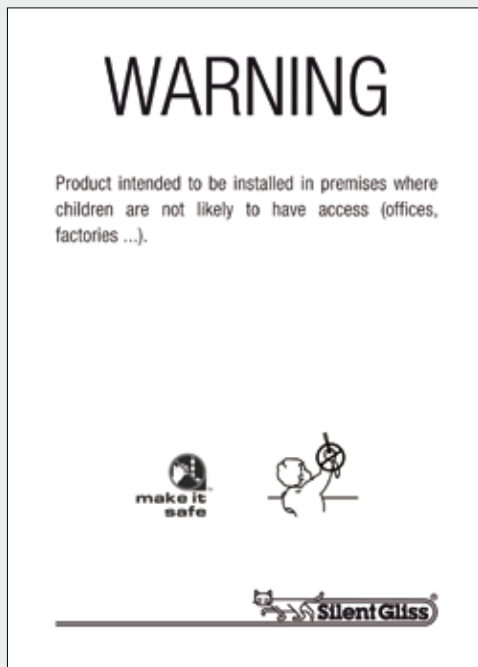
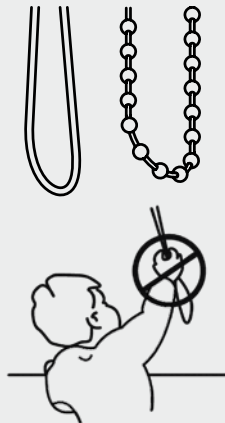
WARNING

The information provided is only intended to give general and preliminary guidance and should not form the basis upon which you consequently make any decisions or conclusions concerning your rights or obligations, neither does it preclude or restrict the need for you to obtain detailed legal advice specific to your own situation and circumstances.

Silent Gliss do not provide a warranty of any kind, whether expressed or implied, in respect of this information, or as to the fitness and suitability of this information for any purpose. Silent Gliss cannot guarantee that the standards, regulations or legislation will not be subject to change before coming into force, nor will Silent Gliss be responsible for any errors, omissions or misleading statements contained therein. Silent Gliss is not responsible for any loss or damage, howsoever caused, arising directly or indirectly from reliance on this information, and we reserve the right to revise it from time to time.

2. When is Child Safety required?

Child safety legislation has to be complied with when:



Criteria 1

The blind contains cords, chains or tapes that could form a hazardous loop, this could be the operating cord or chain or the cords which form the inner structure of the blind.

Criteria 2

The product is intended to be installed in premises where children 0-42 months are likely to have access or be present (all domestic applications).

Criteria 1 = Yes / Criteria 2 = No

A product with a hazardous loop but is not intended to be installed where children are present can be produced and installed without compliance to the legislation. Any order for a “non-compliant” product will need to be supported by a Silent Gliss Risk Assessment completed by the person responsible for the building.

If approved, the products shall be accompanied with the notice on the left. This “non-compliant” leaflet will be included in the packaging with the product.

Partners who assemble Silent Gliss products themselves are required to provide their own risk assessment and packaging notices.

Criteria 1 = Yes / Criteria 2 = Yes

If the product has a hazardous loop and will be installed where children are likely to be present then child safety compliance is necessary. The product will have to be fitted with either an integral or non-integral safety device, the length of operating chains will be controlled and labelling will be mandatory.

3. What types of safety devices are available from Silent Gliss?

There are a number of options available to make a Silent Gliss blind safe. Please note:

- Only Silent Gliss safety devices are to be used with Silent Gliss systems.
- If child safety is required, all cord and chain operated Silent Gliss systems must have some form of safety device provided as standard.

3.1 Operating cords and chains – breakaway systems



Child Safety Device

A breakaway system is some form of device which causes the hazardous loop to break under an applied weight of 6kg.

The Silent Gliss Child Safety Device is a purpose designed integral safety device for operating cords and chains. The two-part device will separate should a weight of 6kg be applied causing the hazardous loop to 'break away' from the blind or curtain track.

This device is an optional extra and needs to be specified at the time of ordering.

The Silent Gliss Child Safety Device is available for the following systems:

- Silent Gliss 2320
- Silent Gliss 2330
- Silent Gliss 2810
- Silent Gliss 4905
- Silent Gliss 4910
- Silent Gliss 8300



Chain Break Connector

A chain break connector is suitable for use on roller blinds Silent Gliss 4905 and 4910.

Chain break connectors are not suitable for use on Silent Gliss Roman blinds due to weight limitations.

A Silent Gliss chain break connector will be available in Spring 2014.

3.2 Operating cords and chains – fixed tensioning systems



The cord retainer is a fixed tensioning device which ensures operating cords and chains are kept taut therefore not creating a hazardous loop. They need to be fixed to a surface (normally a wall) at the maximum distance possible from the headrail.

The Safety Retainer Silent Gliss 10400 is supplied with all cord and chain operated systems as standard unless the integral child safety device is selected.

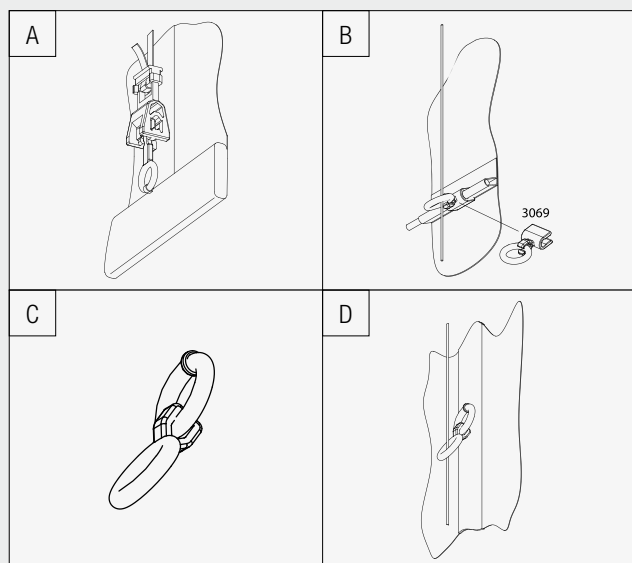
3.3 Inner cords (Roman blinds) – breakaway devices



The new legislation also affects the inner cords of Roman blinds. If the attachment/retention points (lift points), are over 200mm apart they must have some form of breakaway device.

Silent Gliss have introduced new components that attach the cord/ tape to the cross-rod (or lift point) and bottom bar. These parts cause the cord to break away from the blind should a weight of 6kg be applied.

These parts are only tested and certified for use on Silent Gliss hardware systems.



The part numbers for components are:

- A: Breakaway Bottom Bar Set – Silent Gliss 0877
- B: Breakaway Rod Cover (Hard Fold) – Silent Gliss 3069
- C: Breakaway Ring Set (Soft Fold) – Silent Gliss 0878
- D: Breakaway Ring Tape Set (Soft Fold) – Silent Gliss 0879

4. Length of operating cords and chains

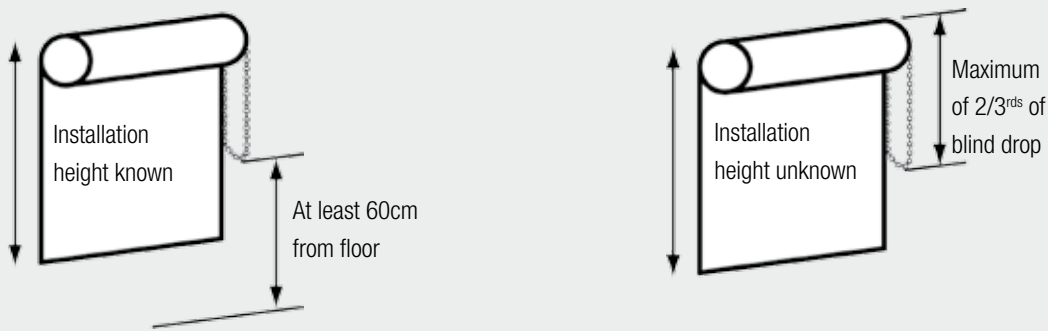
The length of the operating cord or chain is determined depending on:

- The safety device being used
- The drop of the blind
- The installation height

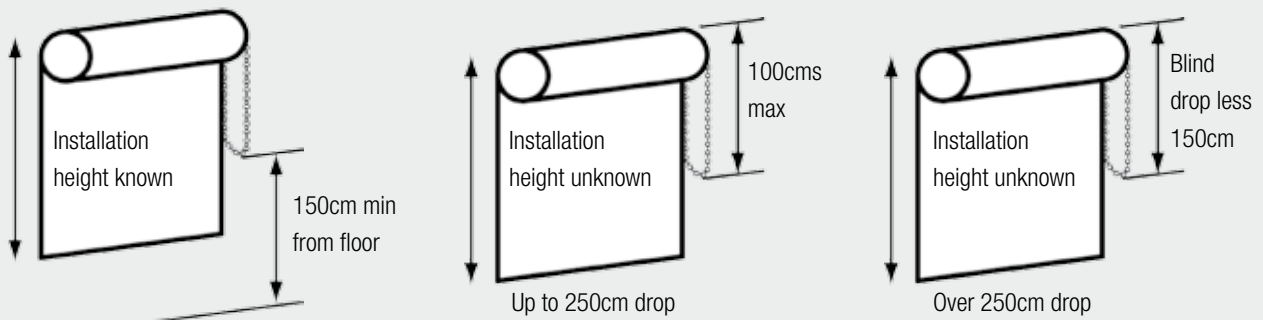
To ensure compliance with the new legislation it is now critical to know the fitting height in order to calculate the cord or chain drop. Where the fitting height is 'not known' the legislation gives clear direction as to what drop is allowed.

The diagram below summarises how the cord drop is calculated:

Maximum operating cord length – breakaway systems



Maximum operating cord length – fixed tensioning systems



Notes:

- Operating cords can be shorter **but not** longer than the lengths given above.
- Not supplying an installation height may have implications for fitting, see 11. Fitting Service.
- Pull cords – for spring operated blinds with pull cords, the maximum length of the pull cord will be 200mm. This will be the Silent Gliss standard unless a shorter pull cord is specified.

5. Product labelling

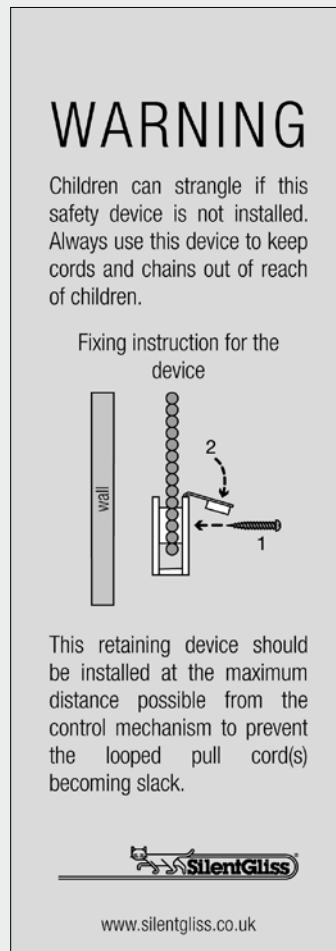
General warning label

This is a swing tag to hang off all cord retainers and should be left in situ for the end-user.



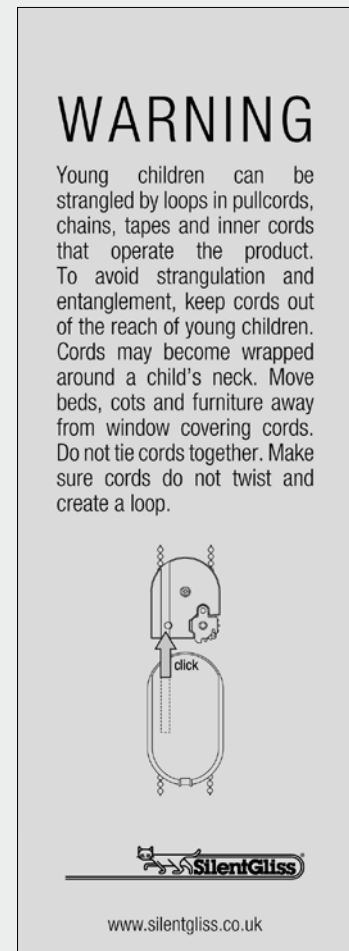
Safety device label – cord retainer

This is a swing tag to hang off all cord retainers and should be left in situ for the end-user.



Safety device label – Child Safety Device

This is a swing tag to hang off all child safety devices. This label is not a legal requirement but has been included to make end users aware of how to use the product.



6. Product identification

The legislation requires that all products can be traced back to the manufacturer. Therefore Silent Gliss now identify all made-to-measure systems by a trademark label applied within the headrail, this label shows our logo and the month/year of manufacture. This is a small label, normally hidden within the headrail.

Third-party assemblers of Silent Gliss systems must apply their own label clearly identifying them as the manufacturer.

7. Fitting sheets

Fitting sheets available

All fitting instructions for cord and chain operated systems have been amended to include the General Warning and information on how to fit a cord retainer.

It also indicates how to reassemble a Silent Gliss Child Safety Device (where applicable)

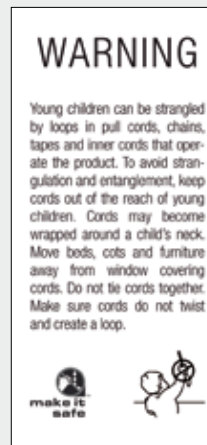


8. Packaging

Packaging warning notice

A warning sticker will be applied to all Silent Gliss packaging for products with hazardous loops.

Customers who assemble Silent Gliss products will need to produce their own labels (wording is mandatory).



9. Measure sheets

The new legislation means that the details and accuracy of the information supplied by customers when ordering becomes even more important.

Measure sheets have been updated to request the **fitting height** of the blind or track. This is critical to determine the cord or chain drop, without it, the “not known” default will be applied. They also request whether the **Silent Gliss Child Safety Device** is required (where applicable). If this option is not chosen then the system will default to the cord retainer.

10. Point of sale literature

End-user brochures have been amended to include the general warning notice



11. Terms and conditions of sale

Terms and conditions of sale have been amended to advise that payment will still be required should customers reject the product or installation fee due to child safety issues.

12. Fitting service

It will be illegal for any Silent Gliss fitters (including sub-contractors) to fit a non-compliant blind. If the end-user refuses to allow any safety devices to be fitted the fitter WILL NOT install the blind.

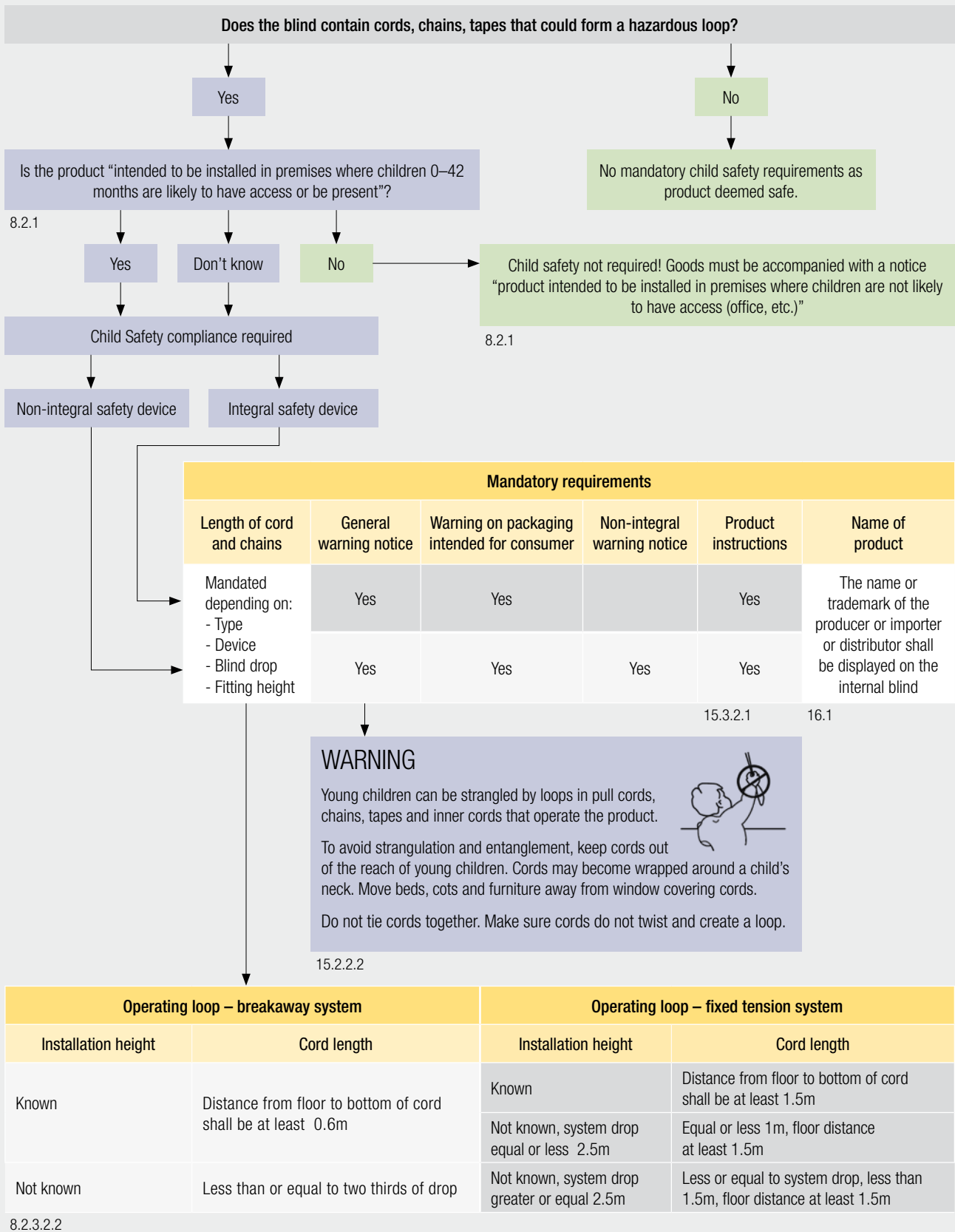
Fitters are required to check the chain drop does not conflict with the legislation and make adjustments to the chain length where possible. If this is not possible the blind cannot be fitted.

13. Certification

Compliance certification is available from www.silentgliss.co.uk (see Child Safety).

14. Summary key requirements of EN13120

Below is a summary of the requirements of EN13120 in relation to Silent Gliss products.



Note: Numbers shown are the clause reference in EN 13120.

www.silentgliss.co.uk
www.silentglissglobal.com

Silent Gliss Ltd.
Pyramid Business Park
Poorhole Lane, Broadstairs
Kent CT10 2PT
Great Britain

Tel: +44 (0) 1843 863571
Fax: +44 (0) 1843 864503
info@silentgliss.co.uk

Silent Gliss Global Ltd.
Pyramid Business Park
Poorhole Lane, Broadstairs
Kent CT10 2PT
Great Britain

Tel: +44 (0) 1843 874250
Fax: +44 (0) 1843 874457
info@silentglissglobal.com