

**Swan**  
designed for life



# Steam Generator

Model: SI9031N

v1.1

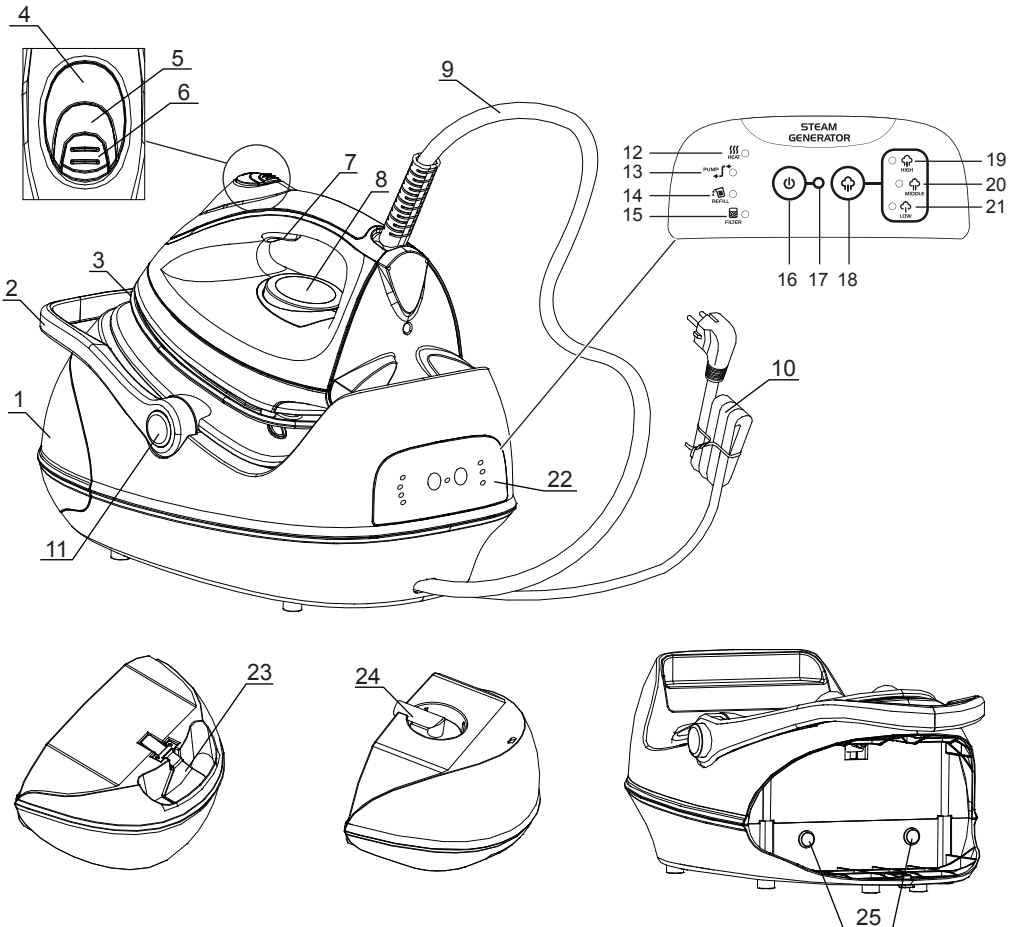
# Important safeguards

---

1. Make sure to read all the safety precautions below and look at the illustrations before you start using the appliance.
2. Use the appliance for its intended use only.
3. The appliance is intended for household use only.
4. In order to protect against the risk of electric shock, do not immerse iron , power base into water or any other liquids
5. Connect the appliance only to an alternating current of the voltage specified on the rating plate and only to an earthed socket. To avoid a circuit overload, do not operate another high wattage appliance in the same circuit.
6. Never yank cord to disconnect from outlet; instead, grasp plug and pull to disconnect.
7. During use, do not lift the appliance by power cord/supply hose.
8. Always disconnect the plug of the appliance from electrical outlet when filling with water or emptying and when not in use.
9. Do not operate the appliance with a damaged cord or if the appliance has been dropped or damaged, it must be taken to a qualified serviceman or manufacturer or its service agent for examination and repair. Incorrect re-assembly can cause a risk of electric shock when the iron is used.
10. Keep the iron and its cord out of reach of children less than 8 years of age when it is energized or cooling down.
11. During use, always place the power base on a stable, level and horizontal surface or ironing board, and then place the iron on the power base.
12. Place the iron on the power base. Do not allow power cord or supply hose to touch hot surfaces.
13. Burns can occur from touching hot metal parts, hot water or steam. Use caution when using the appliance. If the iron is placed onto the iron rest plate during in use, the iron rest plate may become a hot surface. Do not touch the iron rest plate and the soleplate until they have cooled down completely.
14. Never use the iron facing towards people because the steam can cause burns.
15. Never twist the supply hose during use.
16. The iron must not left unattended while it is connected to the supply mains.
17. The appliance must be used or stored in a level and horizontal surface.
18. When placing the iron on its stand, ensure that the surface on which the stand is placed is stable.
19. The iron is not to be used if it has been dropped, if there are visible signs of damage or if it is leaking.
20. If the supply cord is damaged, it must be replaced by the manufacturer, its service agent or similarly qualified persons in order to avoid a hazard.
21. This appliance can be used by children aged from 8 years and above and persons with reduced physical, sensory or mental capabilities or lack of experience and knowledge if they have been given supervision or instruction concerning use of the appliance in a safe way and understand the hazards involved.
22. Children shall not play with the appliance. Cleaning and user maintenance shall not be made by children without supervision.

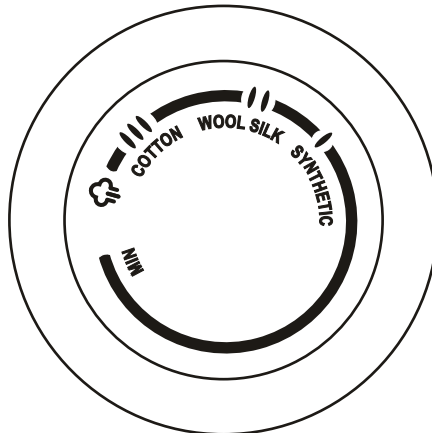
# Parts and Features

1. Water tank
2. Handle
3. Soleplate
4. Heating indicator light
5. Steam button
6. Steam button lock
7. Steam button
8. Temperature control dial
9. Power cord/Supply hose
10. Power cord
11. Handle Button
12. Heating indicator light
13. Pump working indicator light
14. Filling indicator light
15. Filter replacement indicator light
16. Power ON/OFF
17. Power indicator light
18. Steam selection switch
19. High steam setting indicator light
20. Medium steam setting indicator light
21. Low steam setting indicator light
22. Control panel
23. Water tank release
24. Filter
25. Water tank indicator light



# Fabric Setting Chart

Temperature Setting	SYNTHETIC ●	WOOL SILK ●●	COTTON ●●●	Linen Max
Fabric	Synthetics, Silk, Nylon, Acrylic, Acetate	Wool, Polyester	Rayon cotton, Linen	Rayon cotton, Linen
Ironing Instruction	Dry Iron on the opposite side of the fabric	Use a press cloth and Steam Iron on the opposite side of the fabric	Iron while fabric is still damp	Steam Ironing
Steam Selection	—	☁	☁ / ☁	☁ / ☁ / ☁



Temperature control dial

# Ironing Temperature Setting Guide

---

1. Follow up the ironing instructions on the garment label. If there is not any instruction label, but you know what the fabric is, please refer to the fabric setting chart described in this instruction manual.
2. The fabric setting chart is only valid for plain fabrics and not for materials to which finishes, glosses etc, have been applied. Textile to which some kind of finish has been applied (gloss, crinkle, relief etc.) is best ironed at lower temperature.
3. First sort laundry according to ironing temperature setting guide: wool with wool, cotton with cotton, etc.
4. The iron heats up more quickly than it cools down. Therefore, start ironing articles that need to be ironed at the lowest temperature, such as those made of synthetic fibres.
5. If the fabric consists of various kinds of fibres, always select the temperature required by the most delicate fibres, i.e. the lowest temperature. If, for example, an article consists of 60%polyester and 40%cotton, according to the fabric setting chart it should be ironed for polyester and without steam.
6. If you do not know what kind of fabric the article is made of, iron a piece of the material which is not visible when you wear to find out the appropriate temperature for your articles.
7. Pure woolen fabrics (100% wool) should be ironed with the iron setting to steam ironing position. It is advisable to set the temperature control button to "Max" position and use a dry pressing cloth.
8. When steam ironing woolen fabrics, shiny patches may occur. You may prevent this by turning the article inside out and ironing the reverse side.
9. After using of steam ironing for cotton fabrics, do not iron articles required by lower temperature (such as nylon etc.) immediately. It is advisable to adjust the temperature button to the lower setting, waiting for about 2-4 minutes till the power indicator light turn off, and then you can start ironing.

## LIMESCALE

Even with the filter, this iron will need to be descaled from time to time. Use only Swan Limescale remover as it has been formulated for use with this product. It can be purchased quite cheaply at:

**[www.swan-brand.co.uk](http://www.swan-brand.co.uk)**

Just click on the limescale link

# How to use your steam generator

## Prepare the appliance for use:

1. Check if the rating indicated in the rating plate corresponding to the main voltage in your home
2. Press handle buttons to lay handle down. Fig.1 (Note: When handle is up, the unit is shut off, it will be ON when handle is laid down.)
3. Remove any protective foil or sticker or card from the soleplate.
4. Fully unwind and straighten the power cord and the supply hose.
5. Place the appliance on a stable, level and horizontal surface such as ironing board.
6. Place the iron onto the iron rest plate horizontally at the base unit.

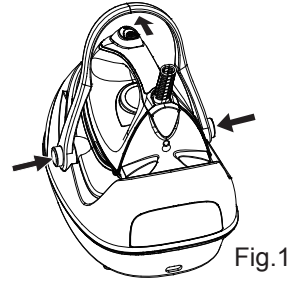


Fig.1

## Fill water tank

1. Press the water tank lock upwards and slide the detachable water tank outwards from the base. (Once power on, water tank indicator light will turn off while water tank is sliding out.) Fig.2
2. Take the filter upwards out from the water fill hole. (You can take the filter out of the opening for filling water into water tank, or fill water into water tank directly with the filter existing in the opening) Fig.3
3. Fill the water tank up to or below the "MAX" fill line with clean water. Fig.4
4. Replace filter back into water filling hole.
5. Replace the water tank into the base unit again. It will be locked in place with the base unit when a "click" sound is heard. (Water tank indicator light will light up to indicate that water tank and filter have been installed in place. Power will then be ON) Fig.5
6. Always pour out the remaining water after use.

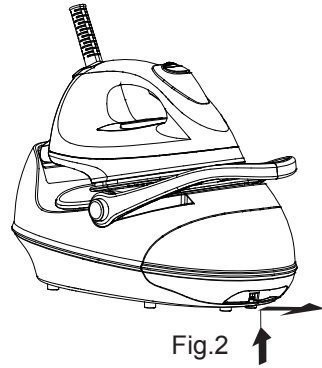


Fig.2

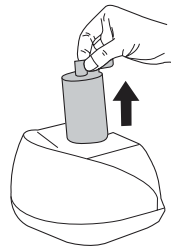


Fig.3

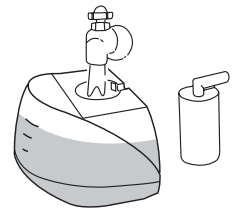


Fig.4

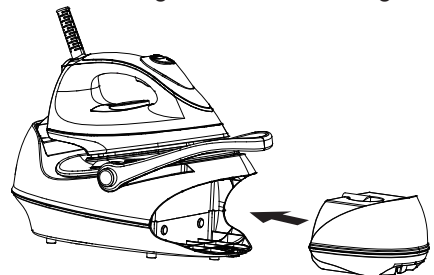


Fig.5

# How to use your steam generator

---

## Functions for Water tank indicator light

1. After power On, water tank indicator light will light up. Water tank indicator light blinks to show that no water or not enough water is in the tank, please fill water to Max level. After filling with water, water tank indicator light will light up steadily for easy viewing of water level.
2. Water tank indicator light will not light up when water tank or filter are not properly in place and no steam function even if steam button is pressed. "BEEP" sounds from base unit if tank or filter are not properly fitted.

## Steam function setting:

Once the unit energised with power, steam indicator light automatically sets at low steam setting. Press steam selection switch to change to MAX or Medium steam setting. If steam ironing is not necessary, please turn off the steam selection switch, and wait for all steam indicator light to go out.

## Steam ironing

1. Fill water tank with clean water refer to above filling instruction. For better performance, please immerse filter in water for several minutes before installing it into the water tank.
2. Connect the appliance into a suitable socket outlet. Press power switch on control panel, a Beep sound and the power indicator light illuminates, it shows that the unit has been connected to the power supply. Water tank indicator light will also light up. Heating indicator light will turn on to indicate that the steam chamber being heated up. Low steam setting indicator light turns on to indicate steam is set at low setting. During use, it is normal that heating indicator light will cycle from on to off. This shows that steam chamber automatically keeps temperature constant.
3. Set temperature control dial to steam ironing position according to fabric setting chart mentioned above. Heating indicator light at iron unit turns on to indicate the unit being heated up. When the heating indicator light turn off, the desired temperature has been reached. It is ready for steam ironing.
4. Before every first time use, it is advised to clean iron unit as follows:  
Take the iron up from the base unit, press steam button underneath the handle to allow steam ON for 20 seconds, and then OFF for 30 seconds, this cycle should be repeated for 2 times. Wait until temperature indicator light turn off, it is ready for use.

# How to use your steam generator

---

5. During steam ironing, please adjust steam rate according to your requirement as indicated in the steam function setting.
6. After use, Set the temperature control dial to “MIN” position, and place the iron back on the iron rest plate. Switch off the unit by pressing the power switch and then unplug the appliance from the outlet.
7. Slide out the water tank and pour out the remaining water.

## Note:

- a. For every first time use, it is normal that a slight vibration sound may be heard from electrical pump inside the base unit for about 10 seconds when steam ironing started. It is because there is air inside the filter, it will stop when the air inside the filter has been pumped out. If this sound continues for more than 30 seconds, please check whether water tank and filter are assembled correctly or not.
- b. During use, if steam stops along with 5 BEEP sound alarm, or water tank indicator light and water filling indicator light on control panel blink. This indicates that it is time to fill water tank.
- c. For continuous use of steam ironing, sometimes pump working indicator light will turn off for several seconds, steam also will stop for several seconds. This is normal. It is because anti-drip function has been activated to protect leakage from soleplate.

## Dry ironing

1. Connect the appliance to a suitable socket outlet. Press power switch on control panel, a Beep sound will be heard and the power indicator light lights up. It shows that the unit has been connected to the power supply. Press steam selection switch to turn off all 3 steam indicator lights, it is ready for dry ironing.
2. Set temperature control dial to desired position according to above fabric setting chart. Temperature indicator light in iron unit will light up to indicate that the steam chamber being heated up. When temperature indicator light turn off, it indicates that desired temperature has been reached, it is ready for dry ironing. During use, it is normal that heating indicator light will cycle from on to off, and then off to on. This shows that steam chamber automatically keeps temperature constant.
3. During use, please press steam lock every 15 minutes. Otherwise, iron will automatically shut off. (Refer to auto-shut off function).
4. After use, Set the temperature control dial to “MIN” position, and place the iron back on the iron rest plate. Switch off the unit by pressing the power switch and then unplug the appliance from the outlet.

**Note:** When changing your Temp setting from higher setting to lower, it is advised not to start ironing immediately since it may cause burns to your fabrics. Please wait until temperature indicator light lights up steadily, and then start ironing.



# How to use your steam generator

## Vertical steam ironing

Follow the steam ironing process, and then hold the iron in vertical position between 5cm and 15cm away from the hanged fabrics. (Fig.6) Press the steam button, and then will create vertical steam. This feature is especially used for removing creases from hanging clothes and curtains. Never steam garments whilst wearing them!

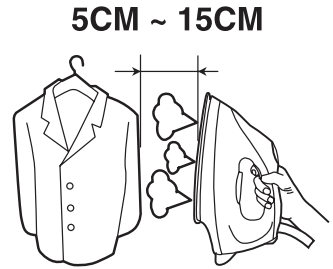


Fig.6

### Note:

1. During steam ironing, supply hose is very hot, please do not touch it.
2. Never block the steam hose.

## Auto-locking function for steam button

If long time steam ironing is needed, please press down steam button lock and then push it backwards, steam button will automatically lock. Steam will escape continuously. If you want to stop steam, please push steam button lock forward.

### Note:

Once steam button auto-locking function is activated, do not leave iron unattended

## Water filling indication function:

No water or water not enough in water tank, water tank indicator light and water filling indicator light on control panel will start blinking concurrently (Fig.7). 5 BEEP sounds alarm to indicate filling is needed.

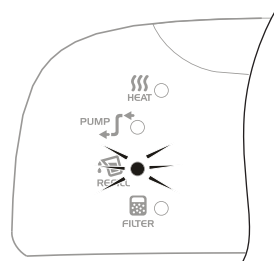
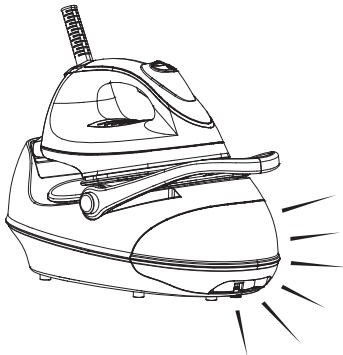


Fig.7

# How to use your steam generator

## Filter Replacement

1. A filter checking system is built into this appliance. It can detect the working time for the filter. Once the filter is invalid, the filter replacement indicator light on control panel will continuously blink to indicate that the filter needs to be replaced (Fig.8).
2. Replacement Method: Slide water tank out from base unit (Fig.9), take the filter out from water tank (Fig.10), and then replace with a new one. (Fig.11) After new filter has been installed into water tank, fill water tank to Max fill level, and then slide tank back into base unit. (Immerse filter in water for several minutes in order to gain better performance for future use.)
3. After power up, press steam selection switch and Power ON/OFF concurrently (Fig.12), filter replacement indicator light will stop blinking and return to checking mode.

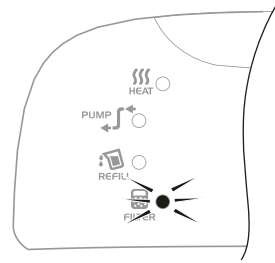


Fig.8

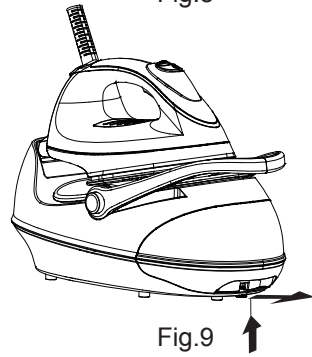


Fig.9

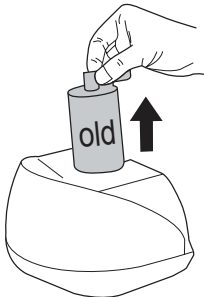


Fig.10

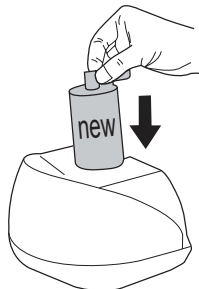


Fig.11

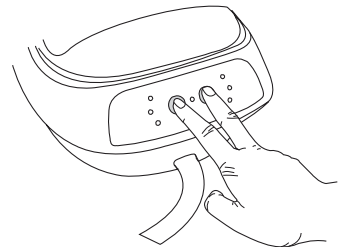


Fig.12

# Anti-calc system

---

1. The filter is designed to reduce the build-up of limescale which occurs during steam ironing, this will prolong the working life of your iron. However, please note that the filter will not completely stop the natural process of limescales build-up.
2. After the filter is invalid, even if a new one is not available at that time. The filter can still be used continuously. However, limescales may be most probably built up in steam chamber, This happens depending on your local water quality. It is advised that filter is replaced as soon as possible or use bottled water

# Safety protection device

---

This appliance has a safety protection device in the base unit. If the supply hose is blocked accidentally, the safety valve will be opened to release steam from the safety vents under the base unit along with high pitch sounds. Once this happen, unplug the appliance immediately, and check whether any damage is found in the supply hose.

# Auto shut off function:

---

The iron will auto shut off after 20minutes if the steam button is not pressed. All indicator lights OFF. Press Power ON/OFF to turn the iron back ON for resuming.

## Note:

Auto shut off function will not be activated if the steam button lock is locked for a long term. Release the steam button lock so it can resume.

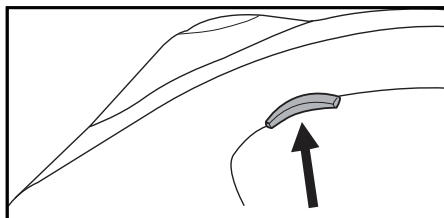


Fig.13

# Use of the handle

---

Handle attached to the base unit used for carrying the appliance, it also serves as a power on/off switch: Lift the handle up to power OFF. Lay it down for power ON. Before use, please lay the handle down as following method: Press two handle buttons at the same time to lay down the handle (Fig.14). After use, allow the appliance completely cool down (Fig.15), put the iron onto power base. Lift handle up. There will be a “click” sound to indicate the handle has been locked in place and you can carry the appliance by the handle.

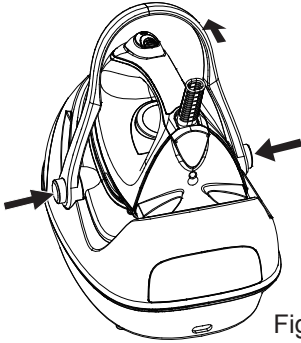


Fig.14

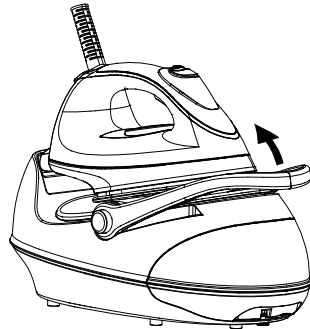


Fig.15

# Emptying and storing

---

1. Disconnect the appliance from the power supply and allow the appliance to cool down for 60 minutes at least.
2. After use, slide out the water tank and pour out all the remaining water. (Fig.16)
3. The iron should be place on the iron rest plate, and then stored.

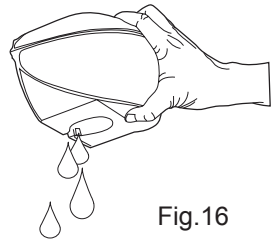


Fig.16

# Cleaning and Maintenance:

---

1. Unplug the appliance from the main supply and let the iron completely cool down.
2. Clean the iron with a damp cloth.
3. Wipe off scale and any other deposits on the soleplate with a damp cloth or non-abrasive(liquid) cleaner. (Fig.17)
4. Never clean the appliance under the tap.



Fig.17

# Trouble shooting

Problems	Possible causes	Solution
Iron won't heat	Incorrect connection to the main socket	Re-plug the unit to main socket.
	Temperature setting knob is set at O position.	Set to the required position.
	Power OFF	Switch the appliance ON
	Handle has not been laid down	Lay handle down
	Unknown malfunction.	Take it to qualified service man or manufacturer for repair.
Water tank light blinks. Two BEEP sounds alarm when pressing the steam button.	No water or not enough water in water tank.	Fill water to water tank as described in "Fill water tank".
Droplets of water escape from the soleplate	Temperature control dial is set at low temperature position.	Set temperature setting knob to suitable position refer to Fabric setting chart.
	The set temperature has not been reached or is too low.	Allow sufficient time for iron to preheat or set higher temperature.
	Steam is set at higher position.	Set to lower steam setting.
Water tank decoration indicator light OFF	Water tank has not been installed in place.	Well install the water tank
	Filter is missed to install	Install the filter
	Un-known malfunctions	Take it to qualified service man or manufacturer for repair.
All indicator light OFF	The appliance comes into auto-shut off mode.	Press power ON/OFF to reset it.
Iron does not produce steam	The set temperature has not been reached.	Allow sufficient time to preheat until heating indicator light turn off.
	Steam button is not set at steam ironing position.	Ensure the steam button is set at steam ironing position and steam indicator light is ON.