



Swan
designed for life

www.swan-brand.co.uk



Scan this QR code
to hear about
our story



We love
what we do



we're proud
of our quality



Find us on Facebook

Dual Voltage Travel Iron

Help line: 0871 200 0003

Copyright © 2012
Swan Products Ltd. PO Box 3117, Stoke-on-Trent ST4 9GD

Model: SI3070N

v3.2



IMPORTANT SAFEGUARDS

When using any electrical appliance, basic safety precautions should always be followed including the following:

1. Always ensure that the voltage on the rating label corresponds to the mains voltage in your home
2. Incorrect operation and improper use can damage the appliance and cause injury to the user.
3. This appliance can be used by children aged from 8 years and above if they have been given supervision or instruction concerning use of the appliance in a safe way and if they understand the hazards involved. Cleaning and user maintenance shall not be made by children unless they are older than 8 and supervised. Keep the appliance and its cord out of reach of children aged less than 8 years. Check the power cord and plug regularly for any damage. If the cord or the plug is damaged, it must be replaced by the manufacturer or qualified person in order to avoid an electrical hazard. Check the power cord and plug regularly for any damage. If the cord or the plug is damaged, it must be replaced by the manufacturer or qualified person in order to avoid an electrical hazard.
4. Do not use the appliance if it has been dropped or damaged in any way. In case of damage, take the unit in for examination and/or repair by an authorised service agent.
5. Never immerse the unit in water or any other liquid for cleaning purposes.
6. Remove the plug from the socket by gripping the plug. Do not pull on the cord to disconnect the appliance from the mains. Unplug the unit when not in use or before cleaning
7. The use of accessory attachments that are not recommended or supplied by the manufacturer may result in injuries, fire or electric shock.
8. Do not let the cord hang over the edge of a table or counter. Ensure that the cord is not in a position where it can be pulled on inadvertently.
9. Do not allow the cord to touch hot surfaces and do not place on or near a hot gas or electric burner or in a heated oven.
10. Do not use the appliance on a gas or electric cooking top or over or near an open flame.
11. Use of an extension cord with this appliance is not recommended. However, if it is necessary to use an extension lead, ensure that the lead is suited to the power consumption of the appliance to avoid overheating of extension cord, appliance or plug point. Do not place the extension cord in a position where it can be pulled on by children or animals or tripped over.
12. This appliance is not suitable for outdoor use. Do not use the appliance for anything other than its intended use.
13. Do not carry the appliance by the power cord.
14. Do not leave the appliance unattended during use.
15. Always operate the appliance on a smooth, even, stable surface. Do not place



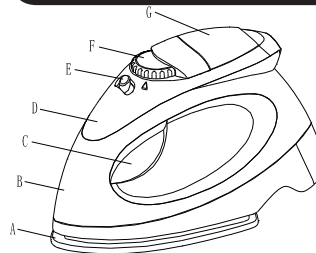
IMPORTANT SAFEGUARDS

the unit on a hot surface.

16. The manufacture does not accept responsibility for any damage or injury caused by improper or incorrect use, or for repairs carried out by unauthorised personnel.
17. In case of technical problems, switch off the product and do not attempt to repair it yourself. Return the appliance to an authorised service facility for examination, adjustment or repair. Always insist on the use of original spare parts. Failure to comply with the above mentions precautions and instructions, could affect the safe operation of this product.
18. Your appliance must never be switched on through an external timer or any kind of separate remote control system



PARTS



- A. Soleplate
 - B. Main body
 - C. Steam shot button
 - D. Top panel
 - E. Steam Switch
 - F. Temperature dial
 - G. Water tank cover
- Specification**
Model No. SI3070N
110-120V/220V-240V~
50/60Hz 900-1100W

Temperature guide

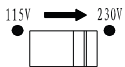
Symbol	Fabric	Temperature	Variable steam	Steam shot	Spray
	Synthetic fibres/silk	*	X	X	✓
	Wool	**	✓	X	✓
	Cotton Linen	***	✓	✓	✓
	Do not iron				



HOW TO USE

Before first use

Remove any stickers, protective foil or storage cover from the soleplate.

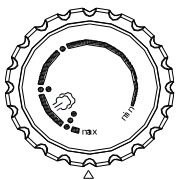
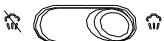


1. Select the correct voltage for your location

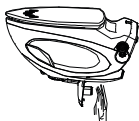


2. Lift the Water Tank Cover (G) and fill with water to the MAX level mark

3. Connect the iron to the mains supply and put the Steam Switch (E) into the desired position



4. Select correct temperature according to garment label. Note: Start with lower temperature garments first. The Steam Shot button (C) can be pressed to release a shot of steam when higher temperature is selected.



5. After ironing, disconnect from mains supply, allow to cool and empty water tank



HOW TO USE

Always check first whether a label with ironing instructions is attached to the article.

The iron heats up quicker than it cools down, therefore, you should start ironing the articles requiring the lowest temperature such as those made of synthetic fibres.

If the fabric consists of various kinds of fibres, you must always select the lowest ironing temperature to iron the composition of those fibres.

Silk and other fabrics that are likely to become shiny should be ironed on the inner side.

To prevent staining do not spray water straight on silk or other delicate fabrics.

Velvet and other textures that rapidly become shiny should be ironed in one direction with light pressure applied. Always keep the iron moving at any given moment.

Pure woollen fabrics (100% wool) may be ironed with the iron set a steam position. Preferably set steam button to the maximum position and use a dry cloth as a mat.

Note: when ironing woollen fabrics, shining of the fabric may occur. So it is suggested that you should turn the article inside out and iron the reverse side.



HOW TO USE

After ironing

Disconnect power supply, allow the iron to cool completely and empty the water left in water tank. Reconnect the power supply and disconnect after indicator light goes off, this dries the soleplate.

Let the iron completely cool down, then wipe flakes and any other deposits on the soleplate with a damp cloth or a non-abrasive (liquid) cleaner. Clean the upper part of iron with a damp cloth. Always store the emptied iron horizontally on a stable surface with a cloth protecting the soleplate.

About limescale

If you live in a hard water area we recommend using bottled water for this iron. Excessive limescale build-up will reduce ironing efficiency and shorten the life of the iron considerably.





BS PLUG WIRING

The wires in the mains lead are coloured in accordance with the following code:

BLUE	NEUTRAL
BROWN	LIVE
GREEN/YELLOW	EARTH

As the colours of the wire in the mains lead of this appliance may not correspond with the colour markings identifying the terminals on your plug, proceed as follows:

The wire which is coloured BLUE must be connected to the terminal which is marked with the letter N or coloured black. The wire which is coloured BROWN must be connected to the terminal which is marked with the letter L or coloured red. The wire which is coloured GREEN/YELLOW must be connected to the terminal which is marked with the letter E or (earth symbol) and is coloured GREEN or GREEN/YELLOW.

WARNING: THIS APPLIANCE MUST BE EARTHED



WEEE DIRECTIVE

Disposal of Unit

Disposal instructions for Swan items in accordance with the WEEE directive. Appliances bearing the symbol shown here may not be disposed of in domestic rubbish. You are required to dispose of old electrical and electronic appliances like this separately. Please visit www.recyclemore.co.uk, or www.reyclenow.co.uk for access to information about the recycling of electrical items. The WEEE directive, introduced in August 2006, states that all electrical items must be recycled, rather than taken to landfill. Please arrange to take this appliance to your local Civic Amenity site for recycling, once it has reached the end of its life.



DOCUMENTATION

We Swan Products Ltd declare that this product conforms to the following product legislation in accordance with the following directive(s):

- 2004/108/EC The EMC Directive (the Electromagnetic Compatibility Directive).
- 2006/95/EC. The LVD Directive (Low Voltage Directive).
- 2011-65-EU. The RoHS directive (Restriction of Hazardous Substances Directive)



WARRANTY

This product is guaranteed for 2 years from the date of original purchase. If any defect arises due to faulty materials of workmanship the faulty products must be returned to the place of purchase. Refunds or replacement is at the discretion of the store.

The following conditions apply:

The product must be returned to the retailer with proof of purchase. The product must be installed and used in accordance with the instructions contained in this instruction guide. It must be used only for domestic purposes. It does not cover wear and tear, damage, misuse or consumable parts. Swan Products Ltd has limited liability for incidental or consequential loss or damage. This guarantee is valid in the UK and Eire Only.



SWAN BRAND HERITAGE



Did you know...

In 1933 most homes were heating their irons over the gas ring or still putting hot coal in them. This Swan iron was basically a n element w ith a handle, which plugged straight into a light bulb socket. And a t a mere 1 4 s hillings (70p), it meant many households could own a prestigious Swan Product.

