

Swan *Retro*  
designed for life



## 6 Litre Air Fryer

Model: SD10510 (all colours)

Help line: **0333 220 6050**

v1.0



## IMPORTANT INFORMATION - RETAIN FOR FUTURE USE

**When using any electrical appliance, basic safety precautions should always be followed including the following:**

- Always ensure that the voltage on the rating label corresponds to the mains voltage in your home
- Incorrect operation and improper use can damage the appliance and cause injury to the user.
- This appliance can be used by children aged from 8 years and above if they have been given supervision or instruction concerning use of the appliance in a safe way and if they understand the hazards involved. Cleaning and user maintenance shall not be made by children unless they are older than 8 and supervised. Keep the appliance and its cord out of reach of children aged less than 8 years. Check the power cord and plug regularly for any damage. If the cord or the plug is damaged, it must be replaced by the manufacturer or qualified person in order to avoid an electrical hazard.
- Do not use the appliance if it has been dropped or damaged in any way. In case of damage, take the unit in for examination and/or repair by an authorised service agent.
- Never immerse the unit in water or any other liquid for cleaning purposes.
- Remove the plug from the socket by gripping the plug. Do not pull on the cord to disconnect the appliance from



## IMPORTANT INFORMATION - RETAIN FOR FUTURE USE

the mains. Always unplug the unit when not in use, before cleaning or when adding or removing parts.

- The use of accessory attachments that are not recommended or supplied by the manufacturer may result in injuries, fire or electric shock.
- Do not let the cord hang over the edge of a table or counter. Ensure that the cord is not in a position where it can be pulled on inadvertently.
- Do not allow the cord to touch hot surfaces and do not place on or near a hot gas or electric burner or in a heated oven.
- Do not use the appliance on a gas or electric cooking top or over or near an open flame.
- Use of an extension cord with this appliance is not recommended. However, if it is necessary to use an extension lead, ensure that the lead is suited to the power consumption of the appliance to avoid overheating of extension cord, appliance or plug point. Do not place the extension cord in a position where it can be pulled on by children or animals or tripped over.
- This appliance is not suitable for outdoor use. Do not use the appliance for anything other than its intended use.
- Do not carry the appliance by the power cord.
- Do not leave the appliance unattended during use. Always unplug the unit when not in use or before cleaning.
- Always operate the appliance on a smooth, even, stable surface. Do not place the unit on a hot surface.
- Ensure that the unit is switched off after use.





## IMPORTANT INFORMATION - RETAIN FOR FUTURE USE

- The manufacturer does not accept responsibility for any damage or injury caused by improper or incorrect use, or for repairs carried out by unauthorised personnel.
- In case of technical problems, switch off the product and do not attempt to repair it yourself. Return the appliance to an authorised service facility for examination, adjustment or repair. Always insist on the use of original spare parts. Failure to comply with the above mentioned precautions and instructions, could affect the safe operation of this product.
- Your appliance must never be switched on through an external timer or any kind of separate remote control system



**CAUTION: SURFACES BECOME HOT DURING USE.  
ALWAYS USE TONGS WHENEVER POSSIBLE**



**CAUTION: PLEASE ENSURE YOUR WORK TOP IS  
ABLE TO WITHSTAND A TEMPERATURE OF AT  
LEAST 60 DEGREES CENTIGRADE FOR EXTENDED  
PERIODS. IF IN DOUBT, MOUNT THE PRODUCT ON  
A SUITABLE WOODEN PLINTH.**



## TECHNICAL DATA

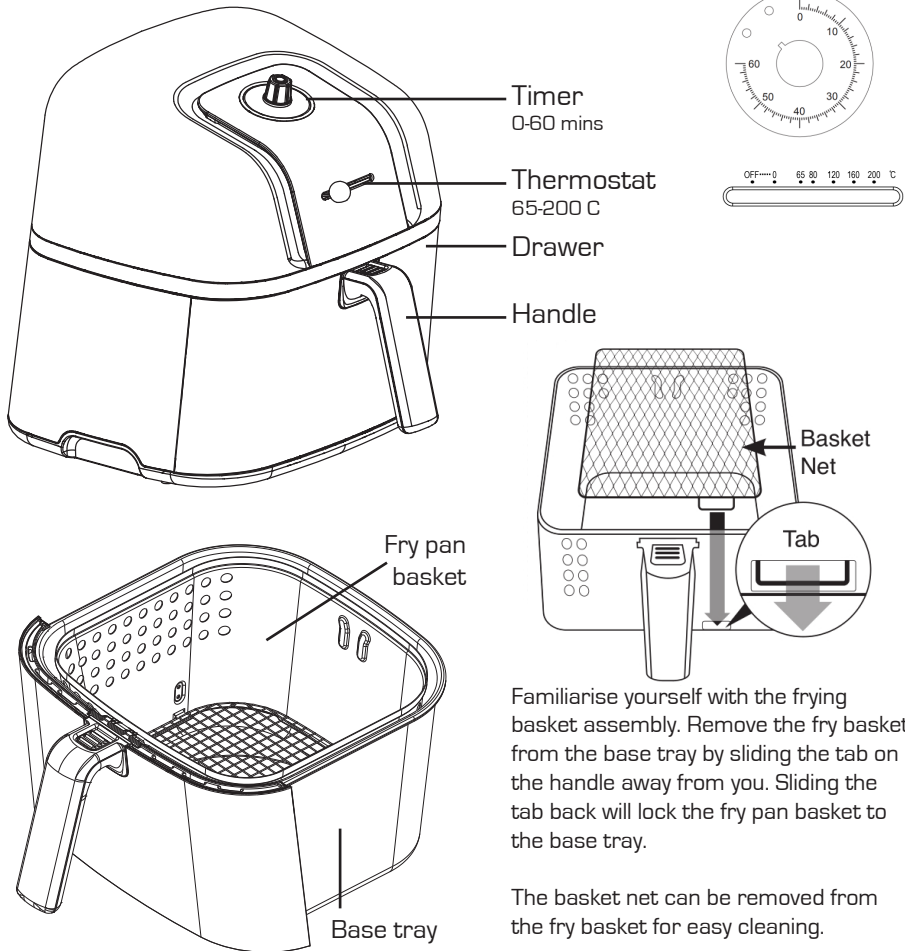
Description: 6L Air Fryer  
Model: SD10510 (all colours)  
Input Voltage: 220-240V  
Frequency: 50/60Hz  
Power consumption: 1800 Watts





## PARTS

Before first use, carefully remove **all** packaging and familiarise yourself with the various parts of your product



Familiarise yourself with the frying basket assembly. Remove the fry basket from the base tray by sliding the demounting tab forward, which is to prevent the base tray from dropping. Sliding the tab back will lock the fry pan basket to the base tray.

The basket net can be removed from the fry basket for easy cleaning.

### CAUTION

- When you pull out the base tray with fry pan basket, Do not push the demounting tab forward, which is to prevent the base tray from dropping.
- Always put the ingredients to be fried in the fry pan basket to prevent direct contact with the heating components.
- Do not cover the air inlet and outlet opening while the appliance is operating.
- Do not pour oil into the base tray, as this may create a fire hazard.
- Never touch the inside of the appliance while it is operating.



## HOW TO USE

This product uses air flow in conjunction with a high power element to cook food quickly and efficiently. Some of the many benefits are:

- Reduced cooking times
- Saves energy
- Little or no pre-heating needed
- Even cooking with little or no fat required
- Compact, space-saving design

Please ensure all food is piping hot throughout before consuming.

- Before using for the first time, remove all packaging and any promotional labels.
- Remove the base tray, fry basket, basket net and wash in warm, soapy water. Rinse and dry thoroughly before putting back into the Air Fryer.
- Ensure the Air Fryer is on a stable, even surface.
- DO NOT put any oil into the fry basket or base tray
- Do not use the Air Fryer without the base tray, fry basket or basket mesh fitted.

### HOT AIR FRYING

1. Connect the mains plug into an earthed wall socket.
2. Carefully pull the drawer out of the Air Fryer
3. Place the drawer on a flat surface, slide the tab toward you to release the fry basket.
4. Place the ingredients in the basket. Note: **Do not overload the fryer, as it may effect the quality of the food.**
5. Place the fry basket back into the base tray then fit the drawer into the fryer - ensuring it clicks into place.
6. Slide the temperature control to the desired temperature.
7. Turn the timer to the desired cooking time. **TIP: Turn the timer control knob past the desired time then turn it back to the desired cooking time again. This improves the accuracy of this type of timer.** Preheat time is usually not required but if used in a cold room, pre-heating for 2 or 3 minutes will give better results.
8. The fan will start. The light will illuminate.
9. The timer starts counting down the set cooking time.
10. During the hot air frying process, the heating element and light will switch on and off to maintain the set temperature.
11. A bell will sound when the timer has reached zero.



## SETTINGS

This table below will help you to select the basic settings for the ingredients.

**Note:** Keep in mind that these settings are indications. As ingredients differ in origin, size, shape and brand, we cannot guarantee the best setting for your ingredients.

Because the Rapid Air technology reheats the air inside the appliance instantly, pulling the drawer briefly out of the appliance during hot air frying (to check progress) barely disturbs the cooking process. **NOTE: Pulling out the drawer will NOT stop the fryer. Do not touch the internal parts. They will be hot!**

### Tips

- Smaller ingredients usually require a slightly shorter preparation time than larger ingredients.
- A larger volume of ingredients requires a slightly longer cooking time, a smaller volume of ingredients only requires a slightly shorter cooking time.
- Shaking smaller ingredients halfway during the preparation time optimises the end result and can help prevent unevenly fried ingredients - just as it does in a regular fryer
- Spray some oil on to fresh potatoes for a crispy result. Fry your ingredients in the air fryer within a few minutes after adding the oil.
- You can also use the Air Fryer to reheat ingredients. To reheat ingredients, set the temperature to 150C for up to 10 minutes.

Temp (C)	Food	Amount	Time (mins)
200	Frozen chips thin	100-400g	9
200	Frozen chips thick	100-400g	11-18
180	Fresh chips/ wedges	100-400	15-22 (spray with oil first)
180	Pork chop	up to 500g	10-15
180	Burger	up to 500g	7-14
180	Chicken breast	up to 500g	10-15
200	Chicken nuggets	Up to 400g	6-10
180	Sausage frozen	Up to 400g	20
180	Sausage fresh	Up to 400g	15
180	Pasties/ pastry top	Up to 500g	8-12 mins



## CLEANING & MAINTENANCE

1. Remove the mains plug from the wall socket and allow the appliance to cool down. Note: Remove the drawer to let the Air Fryer cool down more quickly.
2. Wipe the outside of the appliance with a moist cloth & dry with kitchen towel.
3. Clean the pan and basket AFTER EVERY USE with hot water, some washing-up liquid and a non-abrasive sponge.

Note: The drawer and basket are dishwasher-proof.

Do not use abrasive cleaners (eg metal scouring pads), or strong chemical cleaners

**NEVER immerse the main unit in water or run it under the tap.**



## SPARES

To obtain spares, visit our website:

**[www.swan-brand.co.uk](http://www.swan-brand.co.uk)**

Spares references:  
SD10510-01: Fry pan basket  
SD10510-02: Basket net





## NOTES





## NOTES





## WARRANTY

This product is guaranteed for 2 years from the date of original purchase. If any defect arises due to faulty materials or workmanship the faulty products must be returned to the place of purchase. Refunds or replacement is at the discretion of the store.

The following conditions apply:

- The product must be returned to the retailer with proof of purchase.
- The product must be installed and used in accordance with the instructions contained in this instruction guide.
- It must be used only for domestic purposes.
- It does not cover wear and tear, damage, misuse or consumable parts.
- Swan Products Ltd has limited liability for incidental or consequential loss or damage.
- This guarantee is valid in the UK and Eire Only.



## BS PLUG

The wires in the mains lead are coloured in accordance with the following code:

BLUE	NEUTRAL
BROWN	LIVE
GREEN/YELLOW	EARTH

As the colours of the wire in the mains lead of this appliance may not correspond with the colour markings identifying the terminals on your plug, proceed as follows:

The wire which is coloured BLUE must be connected to the terminal which is marked with the letter N or coloured black. The wire which is coloured BROWN must be connected to the terminal which is marked with the letter L or coloured red. The wire which is coloured GREEN/YELLOW must be connected to the terminal which is marked with the letter E or (earth symbol) and is coloured GREEN or GREEN/YELLOW.

WARNING: THIS APPLIANCE MUST BE EARTHED



## DISPOSAL OF UNIT



Appliances bearing the symbol shown here may not be disposed of in domestic rubbish. You are required to dispose of old electrical and electronic appliances like this separately. Please visit [www.recycle-more.co.uk](http://www.recycle-more.co.uk) or [www.recyclenow.co.uk](http://www.recyclenow.co.uk) for access to information about the recycling of electrical items. Please visit [www.weeireland.ie](http://www.weeireland.ie) for access to information about the recycling of electrical items purchased in Ireland. The WEEE directive, introduced in August 2006, states that all electrical items must be recycled, rather than taken to landfill. Please arrange to take this appliance to your local Civic Amenity site for recycling, once it has reached the end of its life.



[www.swan-brand.co.uk](http://www.swan-brand.co.uk)



Scan this QR code  
to hear about  
our story



We love  
what we do



we're proud  
of our quality



Find us on Facebook

\* on selected products

Copyright © Swan Products Ltd.  
PO Box 3117, Stoke-on-Trent ST4 9GD

