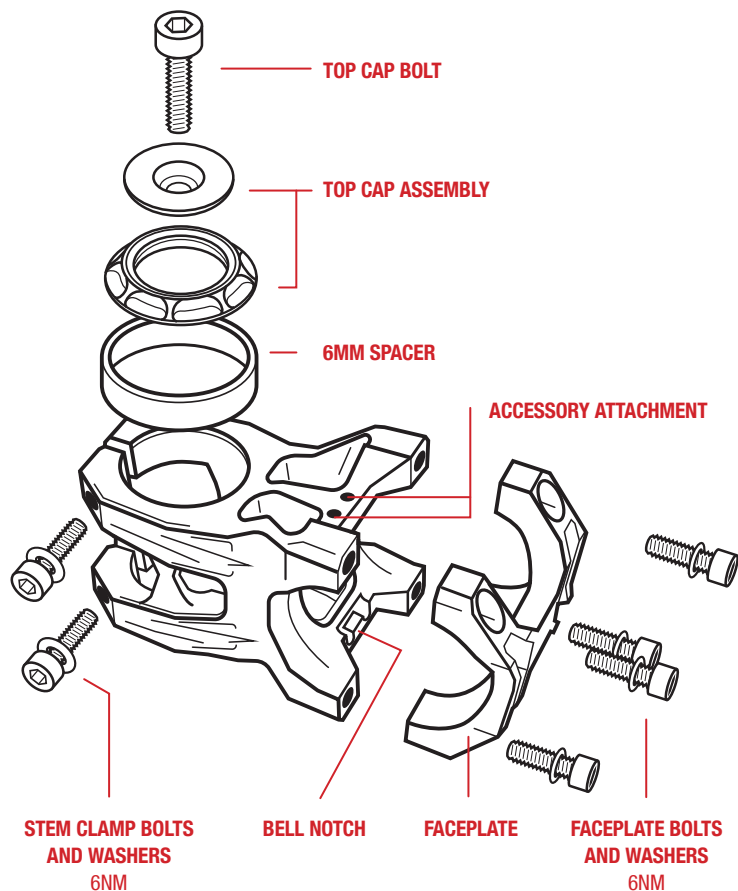


PRO SERIES STEM

PATENT PENDING



READ BEFORE YOU RIDE

The RevGrips stem is compatible with an 1-1/8 inch steerer tube and 31.8mm or 35mm handlebar diameters only. Before installing, check for compatibility with your handlebar and steerer tube.

Before riding, double check that all bolts are tightened to the proper torque spec.

Consult a fit specialist if you are not comfortable setting your stem position.

After a crash, accident or other major impact, have the stem inspected by a professional bike mechanic.

Failure to follow these instructions or improperly installing your stem may cause the stem to become loosened or break and result in accident, severe injury or death.

Always use proper headlights and taillights when riding at times of reduced visibility.

If you have any doubts about installing or using your stem please contact your local RevGrips dealer or RevGrips directly.

Always wear a helmet when cycling.

STEM INSTALLATION

Before you begin, double check that both the steerer tube and handlebar diameters are compatible with your RevGrips stem.

TOOLS 5MM / 4MM / 2MM (BELL AND ACCESSORY MOUNT) / TORQUE WRENCH / ANTI-SEIZE PASTE / FRICTION PASTE / MARKER

NOTE: IF YOU ARE INSTALLING THE BELL AND STEM AT THE SAME TIME, BEGIN WITH THE BELL INSTALLATION.

- 1 With the fork and headset already installed, determine the number of riser spacers you want to use above and below the stem and slide the stem into position on the steerer tube. Once it is temporarily in place, mark where the top of the stem is with a marker on the steerer.
- 2 Remove the stem. Following the fork manufacturers instructions and cut the steerer tube so that it is 2-3mm above the top of the stem. If you do not cut the steerer and you have a gap from the top of the stem to the top of the steerer, you need to remove a spacer to allow more clamping surface for the stem. If you are unsure what your proper stem height is, leave enough steerer tube to run an additional spacer on top of the stem. This will leave you room to move up if needed. We recommend applying friction paste to the inside surfaces of the stem that contact the steerer tube. *SEE FIG. 1 AT RIGHT.*
- 3 Reinstall the stem, spacers, and top cap assembly back on to the steerer tube and tighten top cap bolt until there is no play in headset assembly.
- 4 Align the stem with the front wheel. Apply anti-seize to the 2 clamp bolts and using a 4mm hex, tighten the steerer tube clamp bolts to 6Nm.
- 5 Check the headset for binding or looseness. If there is any, loosen the steerer tube clamp bolts and make adjustments to the top cap bolt as needed and tighten when finished.

TO INSTALL THE INTEGRATED BELL SILENCER, SEE THE SPECIFIC BELL INSTRUCTIONS AND RETURN TO STEP #6 WHEN COMPLETED.

- 6 Place the handlebar into position on the stem in the clamping area. We recommend applying friction paste to the surfaces inside the stem that contact the handle bar. *SEE FIG. 2 AT RIGHT.*
- 7 Apply anti-seize to the 4 bolts and thread them through the faceplate and into the body of the stem. Faceplate is directional. RevGrips logo must be placed right side up. The bolts **on the bottom** of the faceplate should be tightened so there are no gaps. Lightly tighten the top two bolts with a 4mm hex wrench so that the bar will hold a position, but can still be moved with light force.
- 8 Once you have the handlebars positioned where you like (make sure to keep the bar centered in relation to the stem) torque the face plate screws to 6Nm.

NOTE: THERE SHOULD BE NO GAP ON THE BOTTOM FACEPLATE BOLTS. *SEE FIG. 3 AT RIGHT.*

FIG. 1

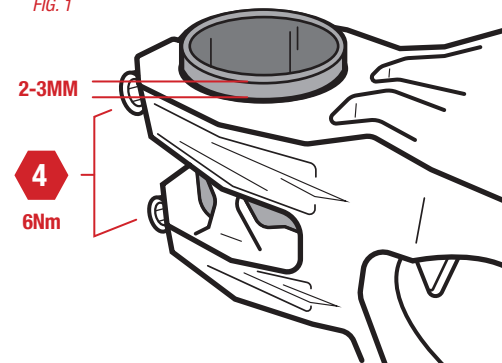


FIG. 2

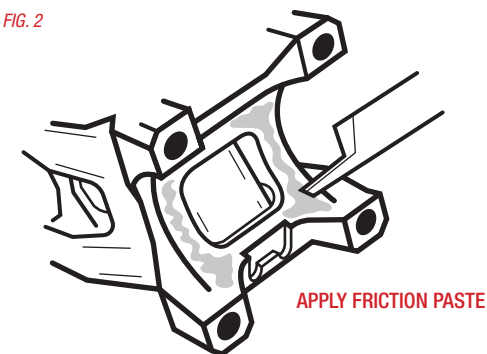
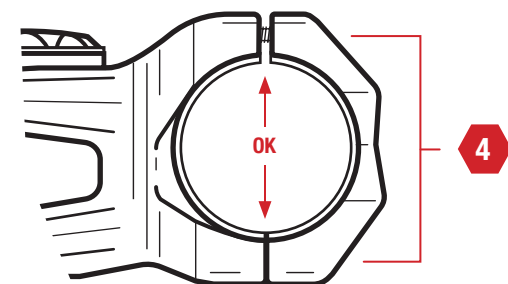


FIG. 3



SEE REVERSE SIDE FOR THE INTEGRATED BELL AND ACCESSORY MOUNT INSTRUCTIONS

REVGRIPS

PRO SERIES STEM ACCESSORIES

BELL INSTALLATION

THE INTEGRATED TRAIL BELL AND SILENCER IS DISCRETELY HIDDEN IN THE BOTTOM OF THE STEM.

TOOLS 2MM

- 1 Carefully separate the brass bell from the silencer. Be sure to keep the clapper, the bolts, and o-rings in place on the bell.
- 2 With the stem and handlebars removed from the bike, insert the bell into the bottom of the stem. Line up the two bolts to the threaded holes in the stem and tighten. It is helpful to point the front of the stem down to keep the clapper in place.
- 3 With the attachment hook in open position, push the silencer into the bell. Rotate the hook into the bell notch so that it is flush with the inside curvature of the stem. This will hold the silencer in position for easy assembly. *SEE FIG. 1 AT RIGHT.*
- 4 Reinstall the handlebars and stem faceplate while ensuring the hook stays in position.

NOTE: THERE SHOULD BE NO GAP ON THE BOTTOM FACEPLATE BOLTS. REVGRIPS LOGO MUST BE FACING UP. *SEE FIG. 2 AT RIGHT.*

- 5 Reinstall your stem and any controls. Be sure to use all stem spacers that were removed. Tighten all bolts to manufacturer's spec.

ACTIVATE THE BELL BY PRESSING DOWN ON THE THUMB TRIGGER WHICH WILL DISENGAGE THE SILENCER. TO QUIET THE BELL, PULL THE TRIGGER BACK SO THAT THE SILENCER INSERTS INTO THE BELL.

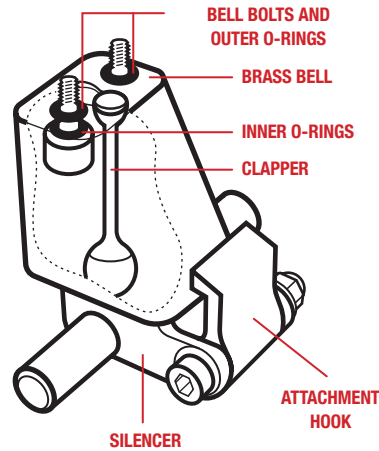
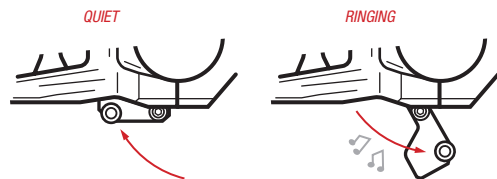


FIG. 1

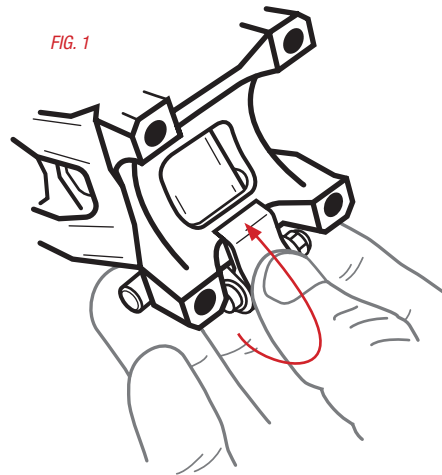
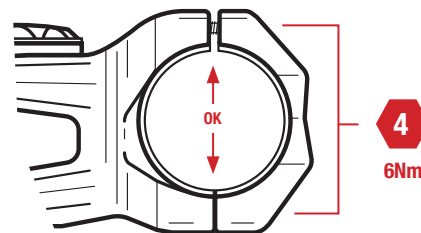


FIG. 2

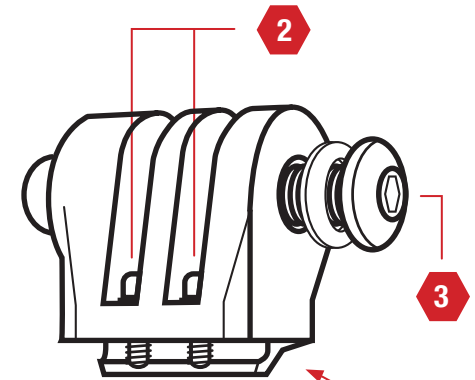


ACCESSORY MOUNT INSTALLATION

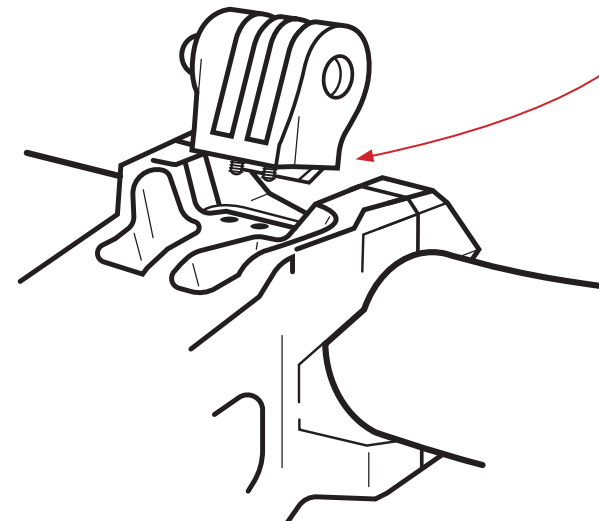
THE REVGRIPS ACCESSORY MOUNT IS COMPATIBLE WITH MOST 2 PRONG ACTION CAMERA AND HEAD-LIGHT ATTACHMENTS.

TOOLS 2MM / 3MM

- 1 Remove accessory attachment bolt and washer with a 3MM.
 - 2 Press the two supplied bolts and washers through the holes in the mount and align with the corresponding holes on top of the stem.
- NOTE:** THE ACCESSORY MOUNT HAS A SMALL TAB ON THE BOTTOM EDGE THAT FACES TOWARDS THE FACEPLATE. THIS KEEPS THE MOUNT POINTED STRAIGHT FORWARD.
- 3 With the tab facing forward and the nut on the left, firmly tighten the bolts.
 - 4 Attach your accessory's 2 prong mount, reinsert the bolt and washer and tighten firmly. Over-tightening of this bolt can damage the accessory mount.



POSITION TAB TOWARDS FRONT OF FACEPLATE AND TIGHTEN.



4
6Nm