

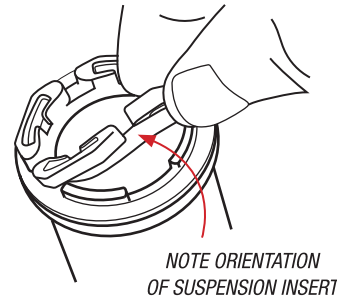
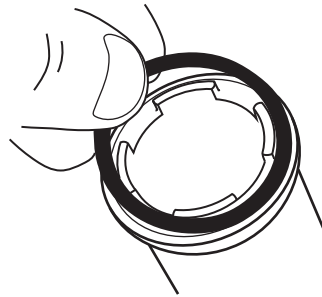
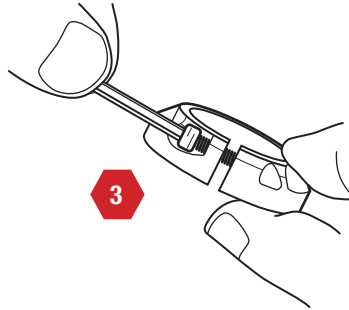
INSTALLING YOUR REVGRIPS - REPEAT THIS PROCESS FOR BOTH SIDES

TOOLS 3MM / TORQUE WRENCH / FRICTION PASTE

1 Insert clamp bolts in all 4 clamps several turns but do not tighten.

2 Select your grip setting/tune from the chart below and place the desired washer over the tabs on the grip sleeve. Washers can be used on the RACE Kit but are not included.

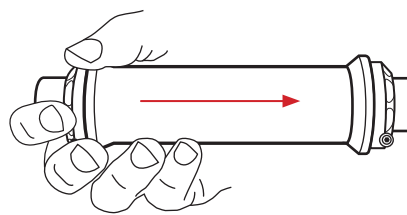
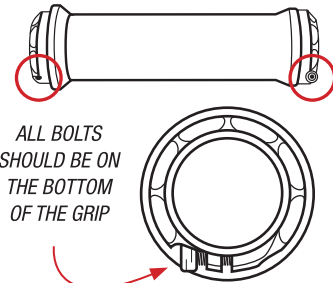
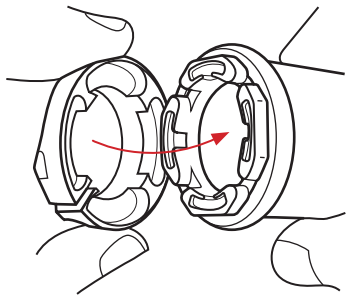
3 Install suspension insert over tabs on grip sleeve making sure that the connecting ring goes **INSIDE** the sleeve.



4 Install lock-on clamps by aligning the grip sleeve (with suspension insert) with the pockets in the clamp and press together while twisting back and forth.

5 Repeat Steps 2-4 for all grip clamps making sure all clamp slots are positioned towards the bottom of the grip.

6 Carefully slide grips over handlebar by holding the outer clamp, making sure the insert ring fits around the handlebar. Do not tighten the clamp bolts.



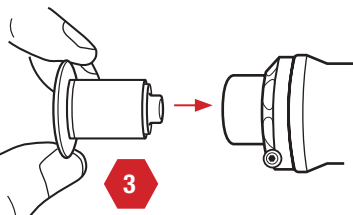
7 Insert bar end into handlebar and tighten (3mm hex) while firmly pressing inward.

THIS WILL EXPAND THE RUBBER TO FIT INSIDE THE HANDLEBAR

BAR END MUST BE TIGHT AND FLUSH AGAINST THE HANDLEBAR!

8 Position the clamp bolts downward (under the grip) and pull the inner clamp **OUTWARD** toward the bar end. Torque the **OUTER** clamp bolt to 15in lbs. (1.7nm).

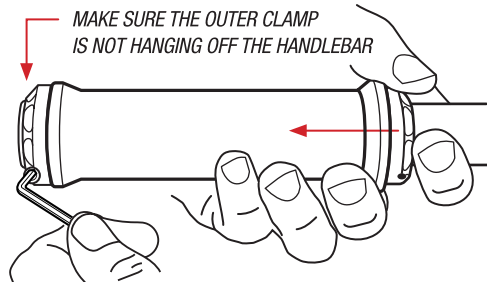
9 Pull the **INNER** clamp outward toward the bar end, ensuring there are no gaps between the grip sleeve and clamp. Torque clamp bolt to 15in/lbs. (1.7nm).



TIGHTEN OUTER CLAMP FIRST

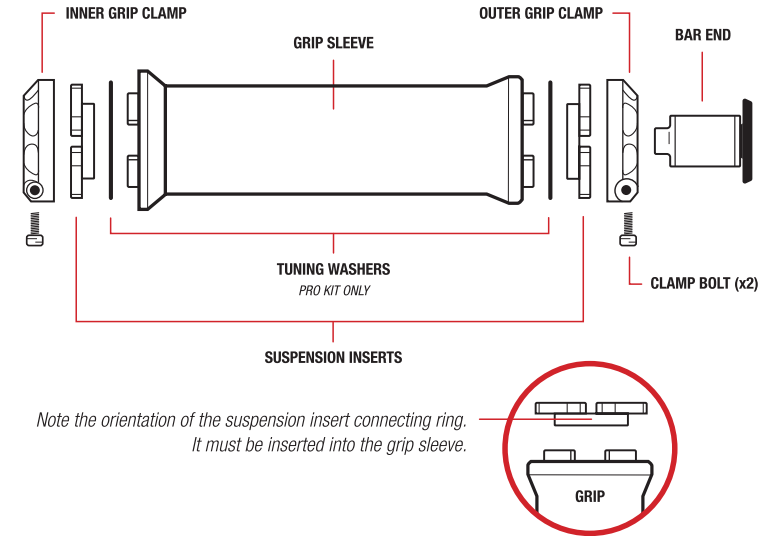
3
15in lbs.

MAKE SURE THE OUTER CLAMP IS NOT HANGING OFF THE HANDLEBAR



TIGHTEN INNER CLAMP SECOND

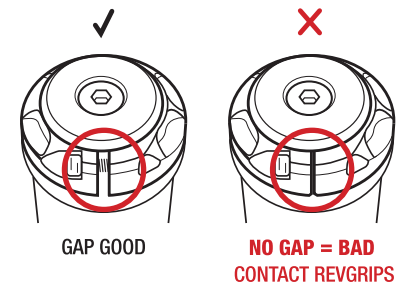
3
15in lbs.



IMPORTANT INSTALLATION TIPS

- Using a 3mm hex wrench, check all grip screws before each ride as part of your standard maintenance routine.
- Grips will not perform properly with side to side play between the grip sleeve and clamp. Clamp should always be right against the grip.
- In some instances, a small amount of friction paste is needed between the clamp and bar to ensure the clamp stays in position while riding.
- Industry standard handlebars are .875 Diameter. Our lock-on clamps have a working range from .865-.880. If your bars are too small the clamp will tighten against itself, and not your handlebar. There should always be a gap between the two halves of the clamp when fully tightened as illustrated below.

WHEN CLAMP IS PROPERLY TORQUED:



TUNING YOUR REVGRIPS (PRO SERIES ONLY)

FIRM	MEDIUM-FIRM	MEDIUM <i>(RECOMMENDED START)</i>	MEDIUM-SOFT	SOFT
Zero tuning washers.	One thin (white) washer on one side.	One thin (white) washer on each side.	One thick (black) washer on one side and one thin (white) washer on the other side.	One thick (black) washer on each side.

ALL RACE SERIES AND PRO SERIES PARTS ARE INTERCHANGEABLE.