

# GASBIKE's



## TRIKE CONVERSION KIT

# **GAS TRIKE**

## **212cc TRIKE ENGINE KIT**



**FREE SHIPPING**

## INTRODUCTION

*Please be advised to carefully read and understand this instruction manual. This manual is custom designed to fit for anyone from absolutely no technical experience to experts.*

### Kit Includes:

- 1 X 6.5 HP, 212cc Predator Engine
- 1 X Centrifugal Clutch
- 1 X #415 Chain
- 1 X 44 Tooth #415 Sprocket
- 1 X Pineapple Sprocket Holder Set
- 1 X 3/16" Thick Steel Engine Mount
- 4 X U-Clamps
- 4 X 5/16-18 Bolts, Washers and Nuts
- 1 X 5/16-24 Bolt with BIG washer and **thick** washer
- 1 X Throttle handle with kill switch and wire extension
- 1 X Throttle Wire

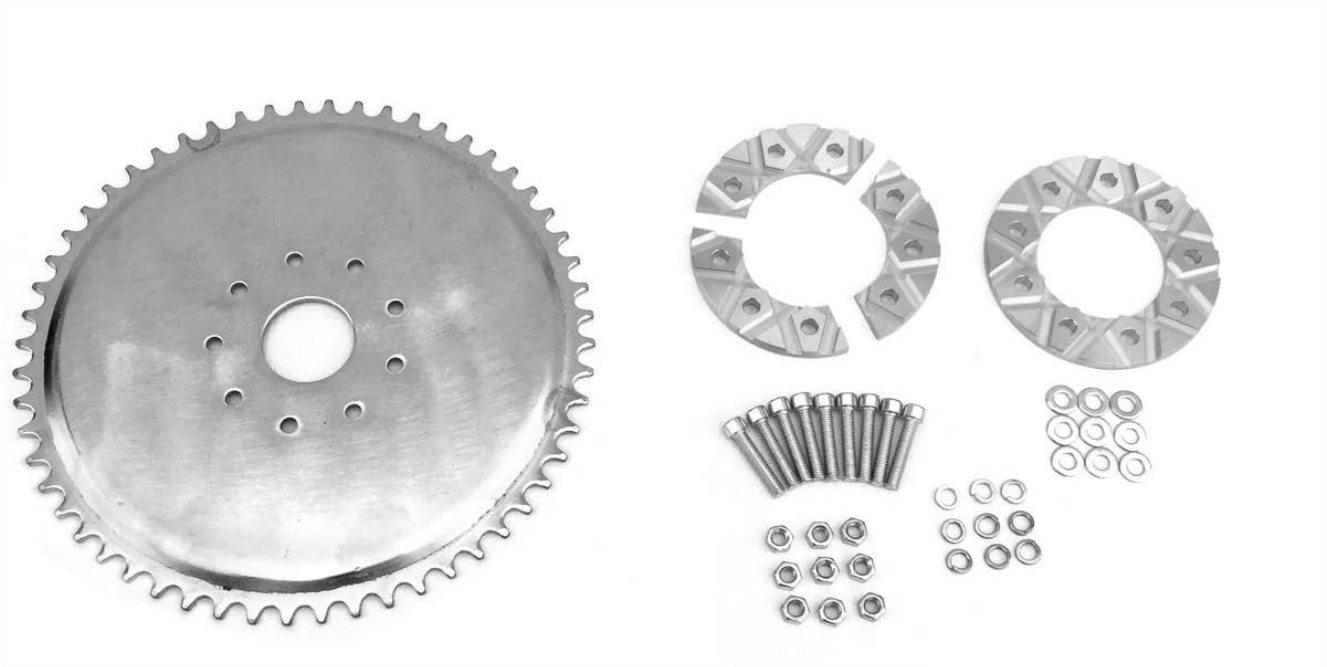
By purchasing the motorized trike instruction manual and part list from us, you agree and accept the below describer disclaimer:

### DISCLAIMER:

*Operating this motorized trike involves some risk of serious bodily injury. Buyer accepts responsibility for any and all vehicle operation that may lead to personal injury, economic loss, social distress, other losses, cost and damages. Seller is not responsible for injuries and/or damage resulting from buyer operating a motorized trike.*

**BUYER IS RESPONSIBLE FOR SAFETY USE AND LAWS AND INSURANCE ISSEUES IN YOUR AREA.**

## SPROCKET SETUP



### Parts required:

- 1 set Pineapple Sprocket Holder with nuts and bolts (Set includes two pineapple sprocket holders. One is pre sliced perfectly in three pieces and the other one is a complete piece). Check the picture for reference.
- 44T/60T #415 sprocket ( Included in the kit )

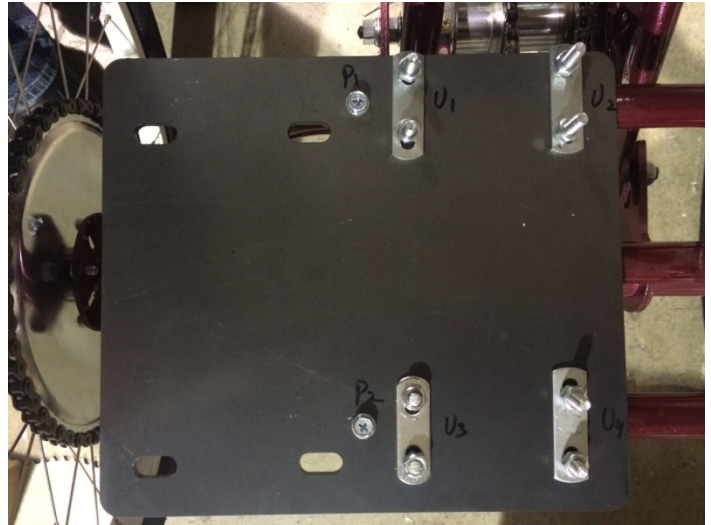
### Installation:

- Slide 1 out of 3 pieces of pre sliced pineapple sprocket adapter inside the spokes and align the slots with the spokes.
- Now take the sprocket and the full piece of sprocket adapter. Place them outside the spokes and match the hole alignment with the inside piece.
- Secure all the 3 parts using the 3 bolts and nuts. (included in the kit)
- Repeat the procedure again to secure rest of the pieces using the nuts and bolts.

- Now align the sprocket with the hub and make sure it is concentric with the wheel. Then tighten the bolts to fix the position of the sprocket.
- Then place the wheel on the axle and spin to check for sprocket being centered and also for wobbling.



## ENGINE MOUNTING PLATE SETUP

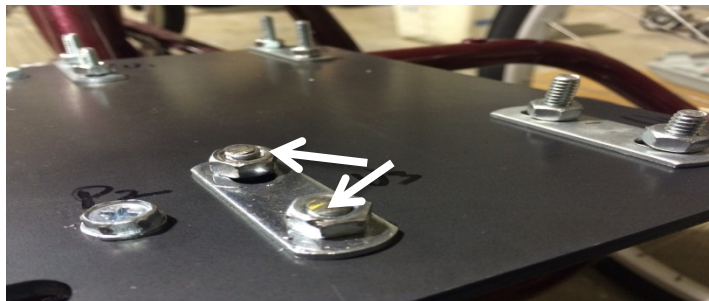


### Parts Required:

- 3/16" Thick Steel Engine Mount (Included in the kit)
- 4 x U-Clamps ( Included in the Kit )

### Installation:

- Align the P2 marked hole (on the engine mount plate) with the left rear hole of the trike (If you are standing behind the trike, facing forward). And P1 marked hole with the left front hole on the trike.
- Secure the place with 1/4" bolts. (comes with the trike, **NOT** included in the kit)
- Now use the 4 u-clamps to secure the plate with the trike using the position marked as U1, U2, U3 and U4 with the trike.
- You might need to shave the extended piece of U-Clamp for either U1 or U3 depending upon your engine placement.



## ENGINE, CLUTCH AND CHAIN SETUP



### Parts Required:

- 6.5 HP, 212cc Predator Engine.
- Centrifugal Clutch.
- #415 Chain.
- 4 X 5/16-18 Bolts, Washers and Nuts.
- 1 X 5/16-24 bolt with BIG washer and **thick** washer for clutch.

### Installation:

- Remove the key from the shaft and install the **thick** washer on the engine shaft followed by the centrifugal clutch.
- Then place the centrifugal clutch on the shaft using the 5/16-24 nut and BIG washer and tighten them to fix the position.
- Now place the engine on the engine mount and align with the left rear hole of the engine with the left rear slot on mount. (As if you are standing behind the trike facing forward, Holding the engine with the shaft outside to your left)
- Then Secure the engine using 4 sets of nuts, bolts and washers (Only hand tight them).

- Take the #415 chain, and size it to obtain the desire tension.



- Now align the chain straight by moving the engine to and forth.
- Once chain is aligned and you have obtained the desire chain tension, tighten to fix the engine at that position.



## THROTTLE CABLE AND HANDLE INSTALLATION

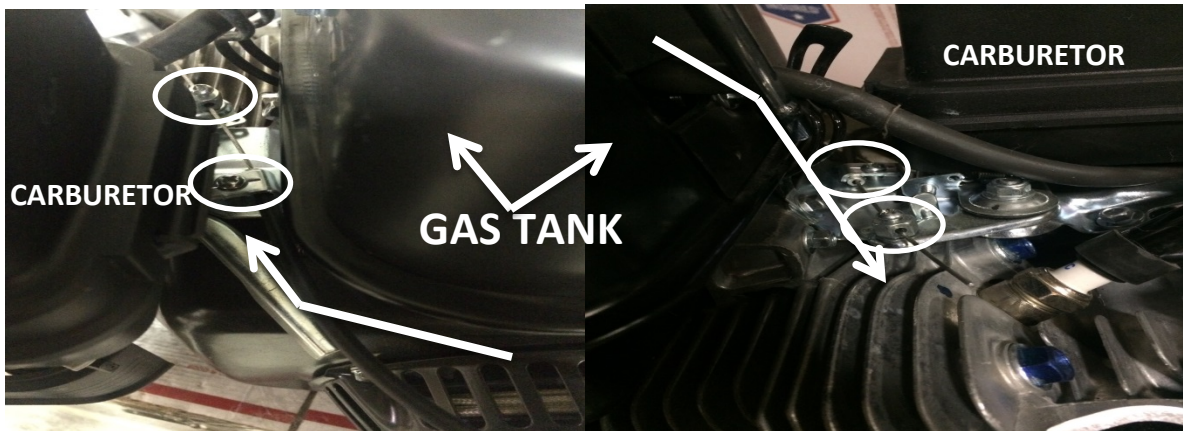


### Parts Required:

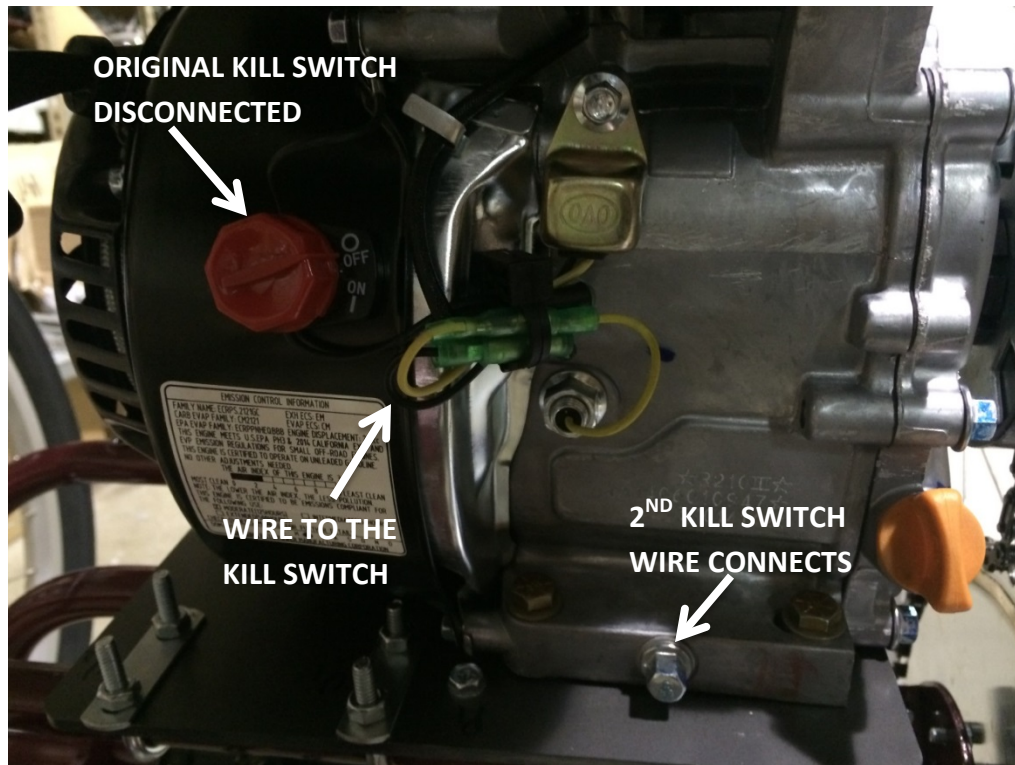
- Throttle Handle and Throttle Wire (Included in the Kit)

### Installation:

- Remove the rubber handle grip from the right handle by rolling it out.
- Pierce the throttle wire to the throttle handle and then insert on to the trike handle bar.
- Adjust the handle and punch a mark to drill a 3/16" hole for the throttle handle pin to fit in.
- Now install the throttle handle and fix it to the place.
- Then install the throttle cable to the engine as shown in the picture.



## KILL SWITCH INSTALLATION



To install the throttle kill switch, first pick one of the two wire coming out from the kill switch, don't matter which, secure it anywhere to the trike frame with a small self-drilling screw, this is the ground. The other wire, run it along the trike frame, securing with wire ties as you go, pull it up close to the engine kill switch. Cut wire from the engine to kill switch and install a wire connector then install throttle kill switch wire to this connector. When you push the throttle kill switch, this will ground the magneto and kill the engine.

## **PRE-RIDE CHECKLIST**

It is recommended that you follow a routine check before each and every ride.

### **General**

- Inspect and tighten all the fasteners before each ride.
- Check for any loose wire or connections. Zip-tie any loose wire with the frame and tighten any loose connection.

### **Brakes**

- Check the brake lever to ensure that it is effective enough to bring the trike to a complete stop securely.
- Perform a regular check to make sure that brake pads are not worn out and are in correct position.
- Check the brake wire at the bottom to make sure it is not broken or torn off.

### **Engine**

- Ensure to check the gas and oil level before your ride.
- Ensure that the engine is in its correct position, tightly secured and chain is aligned.

### **Throttle and Kill Switch**

- Inspect that the throttle handle is tightened and doesn't slide off.
- It is very important to ensure that the kill switch is working and the connection with the engine is secured.