



## Certification and Quality Control

Due to continual investment in human resources and in newest generation production lines, **AIRCOM** is able to keep highest quality and production standards. In its well-equipped laboratories **AIRCOM** is carrying out continuous trials and testing both on its own production and on different product application.

**AIRCOM's** technical, industrial and commercial activity is regulated according to company quality standard **UNI EN ISO 9001** and is certified by German **TÜV** institute.

Furthermore, the **QUICK LINE** system is **ASME** compliant and also obtained **T.S.S.A.** (Technical Standards & Safety Authority) certification.

## QUICK FASTER THAN CONVENTIONAL SYSTEMS

Light weight aluminum piping without the need to groove, lug or thread, drastically reduces labor and installation time.

## EASY

Easy to install thanks to the innovative Quick Line technology, the insertion of the pipes and the use of components in direct connection will allow you to create your piping system in a few simple steps.

## RELIABLE

Corrosion-free leak-proof design fittings. Qualicoat external finished aluminum piping with smooth chrome-free internal treatment.

All is backed by 10-year warranty against defects in material or workmanship.



AIR IS OUR FUTURE



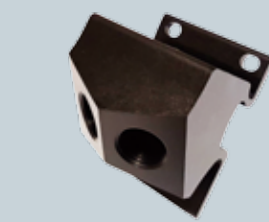
COMPRESSED AIR • VACUUM • INERT GASES

**AIRCOM USA Inc.**  
6600-C NorthPark Blvd  
Charlotte, NC 28216  
Ph. (704) 987 2088 • Fax: (704) 987 2321

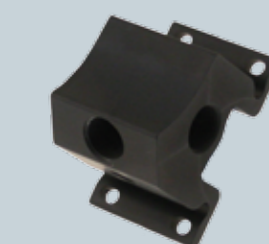
**MANIFOLDS**



Single port



Two port with 1/4" blind drain



Three port with 1/4 " blind drain



Four port with 1/4" blind drain

**QUICK LINE ALUMINUM PIPE**



mm	inches	BLUE	GREEN	GRAY
16	1/2"	✓		
20	3/4"	✓	✓	
25	1"	✓	✓	✓
32	1.1/4"	✓	✓	
40	1.1/2"	✓	✓	✓
50	2"	✓		✓
63	2.1/2"	✓		✓
80	3"	✓		✓
110	4"	✓		✓
168	6"	✓		✓

**QUICK LINE ALUMINUM**

100% Aluminium fittings line



Aluminum is the most suitable material to deliver pressured fluids, such as compressed air

ALUMINUM PIPE + ALUMINUM FITTINGS = NO ELECTROLYSIS!

mm	20	25	32	40	50	63	80	110	168
inches	3/4"	1"	1.1/4"	1.1/2"	2"	2.1/2"	3"	4"	6"
	✓	✓	✓	✓	✓	✓	✓	✓	✓

**QUICK LINE POLYMER**



PA6 Polymer fittings line

mm	16	20	25	32	40	50	63
inches	1/2"	3/4"	1"	1.1/4"	1.1/2"	2"	2.1/2"
	✓	✓	✓	✓	✓	✓	✓

**MULTILAYER PIPE (PE-RT + Aluminum)**

An easy bendable pipe solution to work around pillars, for "not-straight" drops, underground piping jobs etc.

Perfectly interchangeable with all our fitting systems.

Available in 50mt/164' coil in the following sizes:

- 16mm - 1/2"
- 20mm - 3/4"
- 25mm - 1"



**4"-6" ALUMINUM - LARGE DIAMETER**

4" Aluminum Plain Pipe



6" Aluminum Grooved Pipe

**QUICK BRANCH DROP**

Quick branch drop (saddle-type)



**QUICK LINE ACCESSORIES**

A full range of accessories for proper assembly of distribution systems.

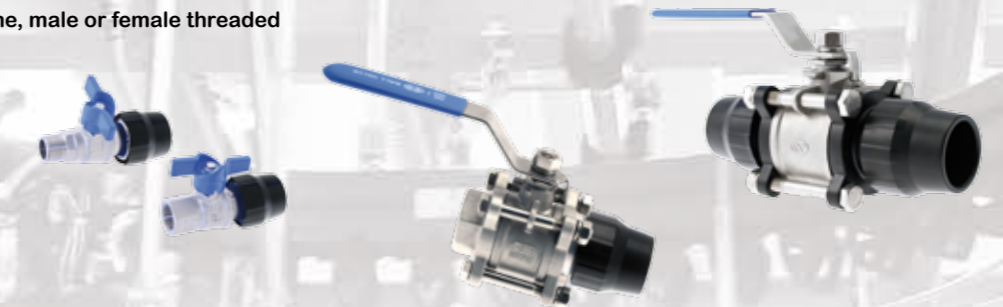
The range includes core drill, deburrers, flanged expansion joints, flexible hose, threaded flanges, reducing spigots and a Toolbag for Aluminum and Polymer fittings.

Fitting assembly lubricant (oil-free)



**QUICK LINE BALL VALVES**

In line, male or female threaded



**AIRCOM SOFTWARE**



Sizing software for Windows 10 and MAC OS  
Available for iPad 3,4 and iPad AIR and iPad Mini!

**10 YEAR WARRANTY**



10-year warranty on pipes and fittings

For more information, please see our Warranty Sheet



Five port with 1/4" blind drain



Seven port with 3/8" or 1/2" outlets



Seven port with 1/4" blind drain