

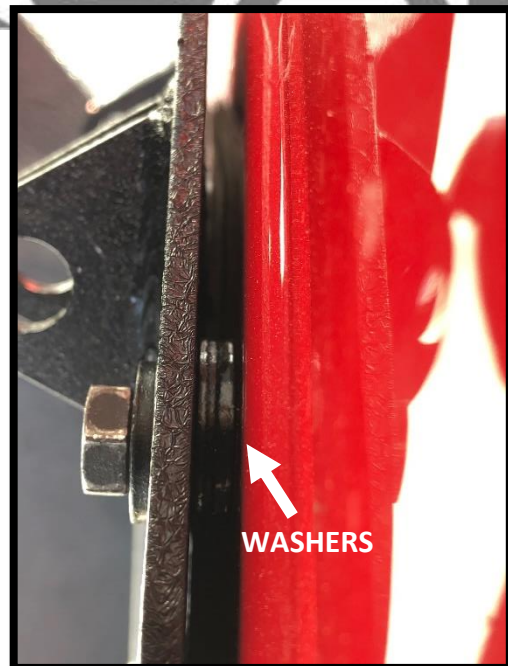
DV8 OFFROAD BUMPER AND TIRE CARRIER

(RBJL-02)

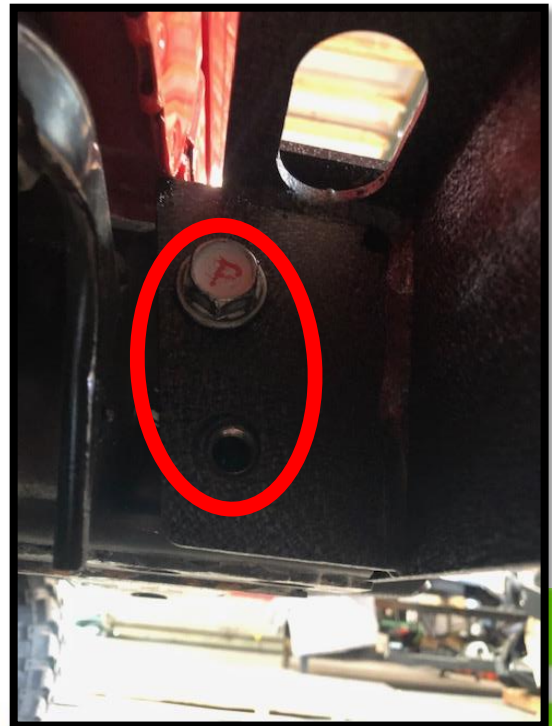
1. Begin by removing all items from their boxes. Inspect all items prior to installation.
2. Remove the factory tire carrier from the Jeep. Be sure to keep all items since you will reuse some factory items.
3. Remove the factory tailgate exhauster from tailgate. Trim off tabs on face so they are flat.



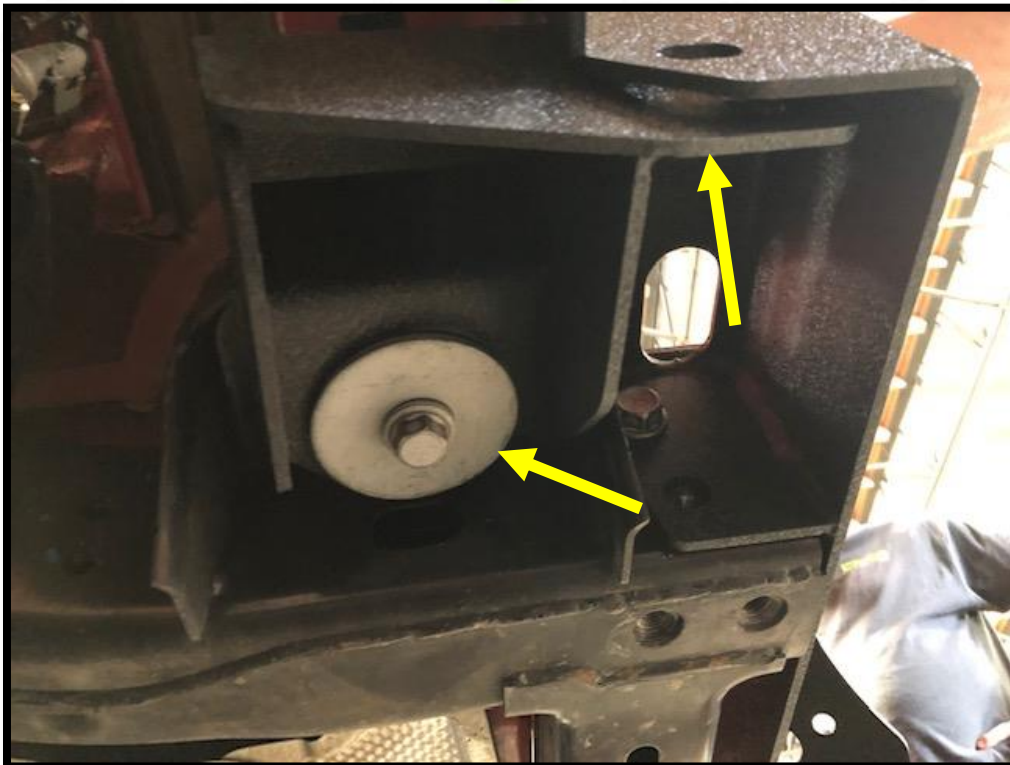
4. Attach the rear hatch plate using factory hardware and the provided 3/16 spacers.



5. Install the center section of the rear bumper using factory hardware.



6. Install corner support bracket. This attaches to one bolt on the bumper, and the factory body mount bolt.



7. Install the two copper bushings into the tire mount pole on the bumper. Using a rubber mallet or dead blow. Ensure to keep straight and not damage the bushing.



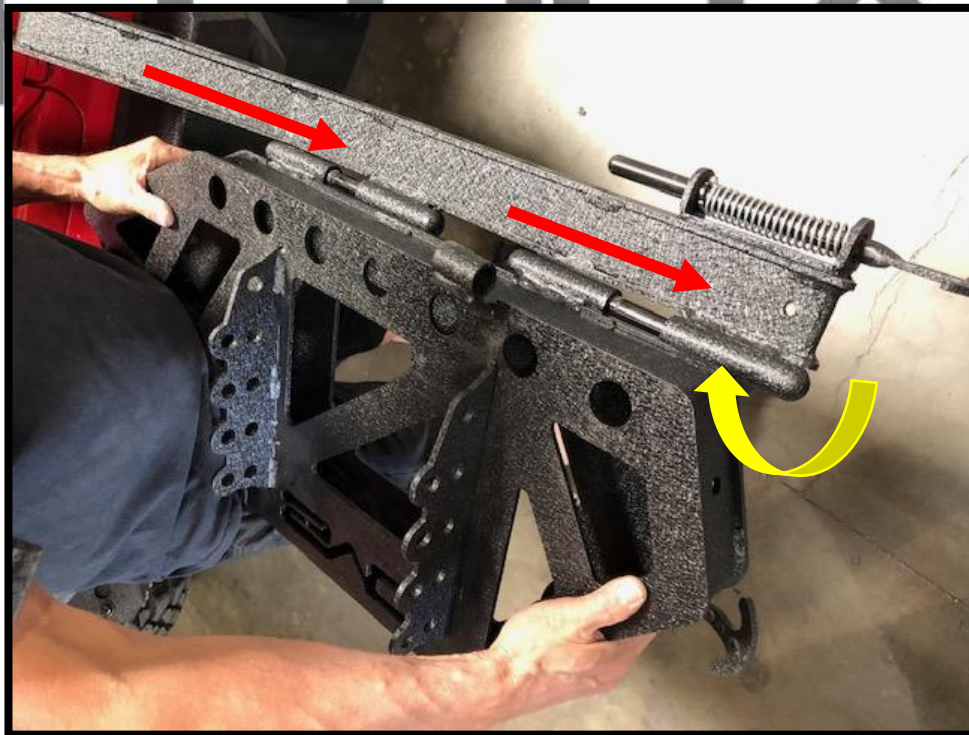
8. Install the corner pieces of the bumper to the center section. Using provided hardware. There are three bolts on top of end piece and one below on the underside.



9. Once the bumper and end caps are installed and tightened, insert tire carrier lower section. Slide it into bushings. Secure on the underside with large castle nut.



10. Once carrier is bolted to bumper, open lower carrier section up all the way. Install the upper section by sliding it into the lower section. Fold up and secure with pin.



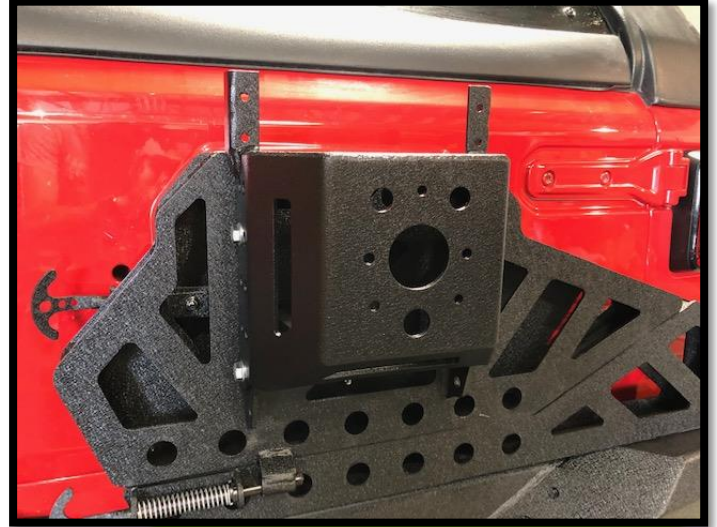
11. Install the round rubber bump pad (donut) onto back of carrier using supplied nut and bolt.



12. Close the carrier and check to make sure it is a tight fitment. If you have slack in the carrier between the rear hatch plate and the rubber bumper (donut), add 1-3 washer between the pad and the carrier. This will prevent any potential noise or slack.



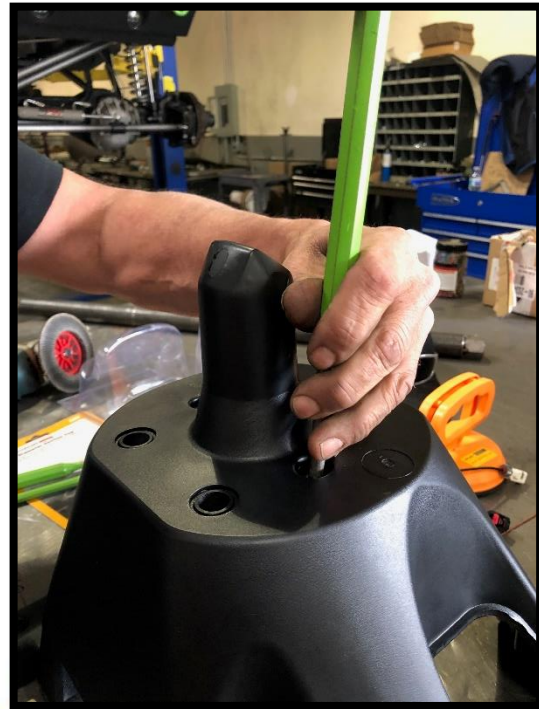
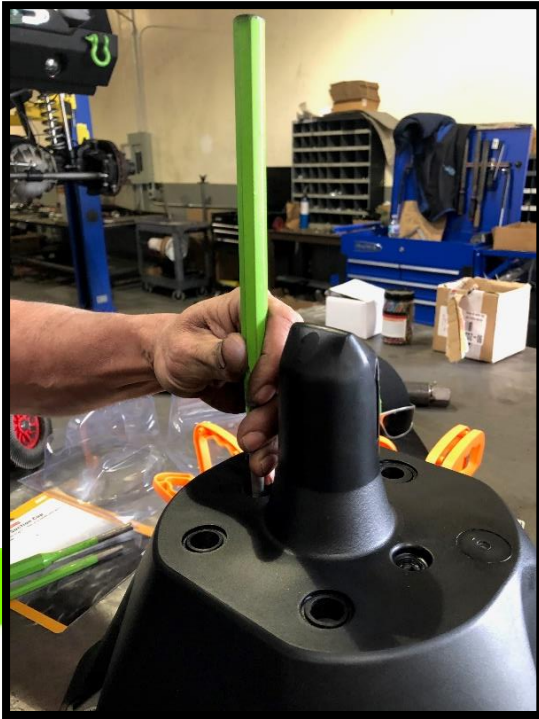
13. Install the tire mount onto the carrier. The height will vary based on tire size. You want to position the tire down as far as it will go before making contact with the bumper while opening and closing.



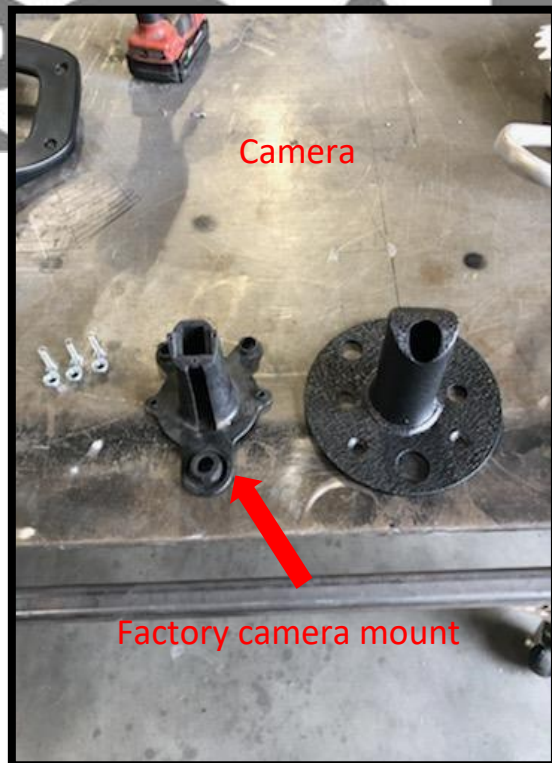
14. From the factory carrier, remove the factory stud plate by undoing the two screws on the factory tire mount.



15.Using a punch, lightly tap out the factory camera mount. NOTE: This is plastic and so be careful and punch out the two holes in the center equally.



16.If you are running a rear camera you will utilize the factory camera bracket (plastic) and the provided camera enclosure. If you do not have a camera, you will utilize the block off plate.



17.If using a camera, place the factory camera mount (plastic) though the holes. Place the factory stud plate behind it. Secure using factory bolts.



18.Using the provided camera enclosure, cover the camera and bolt using supplied flush mount allen head bolts.



19. Remove factory third brake light from stock carrier. Attach to new carrier using (4) factory screws.



20. Enjoy your new carrier!



NOTE: If you are running factory wheels or high positive offset wheel, you will have to run a wheel spacer.

If you have any questions email us at info@dv8offroad.com
or call us at 951-680-9595