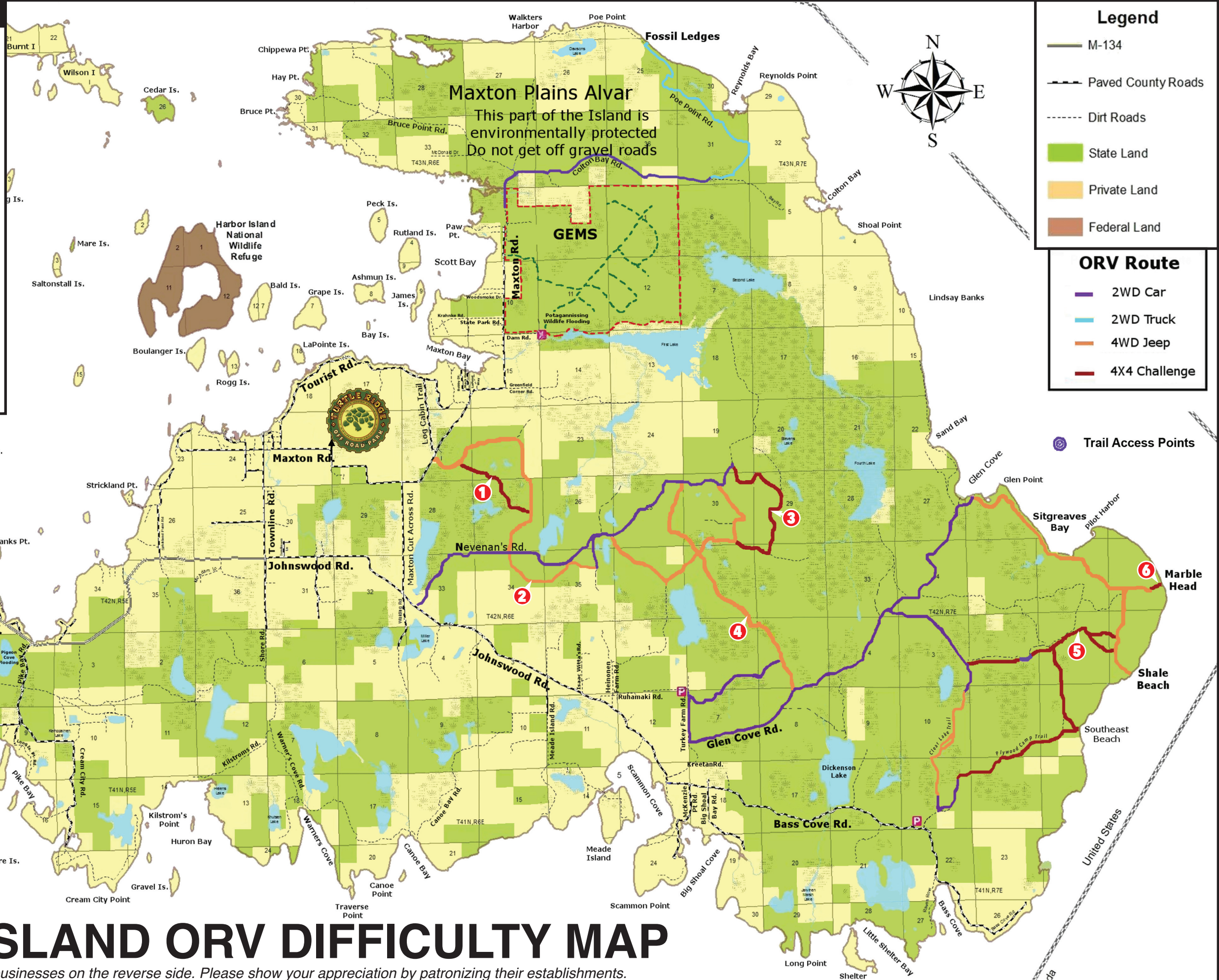


FEATURED ORV TRAILS

- 1 Mu's Nemesis**
A challenging trail section that requires technical skills to overcome the terrain. Not recommended for the faint of heart. Take the long way around if you're on your own.
- 2 Walker Trail**
This was the first actual "ORV Route" opened on Drummond State forest land to accommodate Jeeps and large sized traffic. It should be considered an experienced level trail due to mud and obstacles found around the mid-way section. We recommend you "buddy-up" for this one.
- 3 Tight Twisties**
The Tight Twisties isn't so tight anymore due to loggin operations, but still remains one of Drummond's most difficult trails. This remote location in the center of the Island offers hills, rocks, mud, and technical driving. Be smart. Don't go alone, it's a long walk out.
- 4 Log Jam Hole (aka Conner's Hole)**
The Log Jam Hole increases with difficulty by the season. In the spring, with the melting of the winter snow pack, this section of Drummond's trail system can be pretty wicked. By the time mid-summer rolls around, it's a friendly little trail with lots of photo opps. However, one heavy rain can change everything. You may want to look for the bypass.
- 5 Tank Traps**
The Tank Traps can be found on the southern loop of the Marble Head Trail. These traps were created by an early attempt to drain water away from the clay-based section of the trail. Though we were able to get rid of the water, beware! Only the "serious minded folk" knowingly tackle this one. *Tow strap and winch highly recommended here.*
- 6 Marble Head**
Drummond Island's south Marble Head loop is a 3-7 difficulty. **Jeep Badge of Honor destination.** Get the app online to learn more about his program. This trail is rugged and challenging. Rock shelves known as "The Steps" guard the approach to Marble Head, a low headland 100' above Lake Huron. While the elevation may not be impressive, the sweeping panoramic view of Canada and ride to get there should be on everyone's list.



DRUMMOND ISLAND ORV DIFFICULTY MAP

This complimentary map is made possible by the businesses on the reverse side. Please show your appreciation by patronizing their establishments.



OPEN All Year, 7 days a Week
Serving Breakfast, Lunch and Dinner

Offering Daily Food Specials

Big Screen TVs ♦ Keno ♦ Pool Table
ATM ♦ Internet ♦ Video Juke Box

Fun Entertainment and Events!

www.northwooddrummond.com

Northwood Restaurant & Bar-Drummond Island

Great Food, Great Times, Great People

906-493-5282

29944 E Channel Rd., Drummond Island, MI 49726



Complete Building Supplies
Lumber & Home Center
Kitchen Designs
Pole Barn &
Garage Packages
Hardware
Job Site Delivery

TRI-COUNTY
Building Centers

Taylor Lumber
Company
CEDARVILLE
(906) 484-2204

Pickford
Building Center
PICKFORD
(906) 647-3101

The Falls
Building Center
PARADISE
(906) 492-3005

Straits
Building Center
ST. IGNACE
(906) 643-7141

DeTour-Drummond
Building Center
DETOUR
(906) 297-5011

Tri-County
Cabinetry & Design
SAULT STE. MARIE
(906) 647-5000

www.tricountybuildingcenters.com

Drummond Island Outdoor Toys, Inc.

32884 S. Maxton Rd.
Drummond Island, MI 49726
1-906-493-5445 • 1-877-493-5445

Open year round



Pontoon Boats Fishing Boats
Snowmobiles

Hourly, daily, weekly rates available.

DRUMMOND ISLAND HOTEL & VACATION HOMES

34834 S. Townline Rd.
Drummond Island, MI 49726
email: dilodging@gmail.com

Clean, Comfortable & Affordable
Offering spacious guest rooms
and multiple rental properties
throughout Drummond Island

906-493-6799 dilodging.com

TRAIL RATINGS

Trails are rated using a standard system in use throughout the recreation industry. Ratings are assigned under ideal conditions, and are based on difficulty compared to other routes in the area. A trail rated easy by local standards could possibly be rated moderate or even difficult elsewhere. Conditions are always subject to change due to weather and other acts of nature.

Easy - These routes are appropriate for novice through advanced users. They generally follow obvious, well-marked trails and roads. Grades are gentle and few obstacles will be encountered.

Intermediate - These routes are appropriate for intermediate through advanced users. Terrain may be steeper, trails narrower, and some obstacles may be encountered.

Challenging - These routes are recommended for advanced to expert users only. Terrain is steep and routes are not well marked. You should have considerable skill in your chosen activity, as well as knowledge or navigation and survival before attempting these trails.

Where Memories Are Made All Year Long!



Cottage Rentals
RV Camping
Water Sport Rentals
Wi-Fi • Sandy Beach
Laundry • Ship Store
Mechanic On-Site
New & Used Boat Sales



Unparalleled Views ~ Outstanding Customer Service



Drummond Island
YACHT HAVEN

906-493-5232

www.diyachthaven.com

yachthaven@lighthouse.net

WA-WEN RVs, Camping & More

32884 S Maxton Road, Drummond Island



RV Park Open May - October

R.V. sites are full hook-ups
(water, sewer, electric 50/30/20 amps)
Each site has a picnic table
Laundry Facilities Available
Wireless Internet

(906) 493-5445
www.wawenresort.com

Drummond Island Self Storage

For all your storage needs.



231-838-4221
drummondselfstorage.com

BEAVER'S ATV RENTAL

OIL • BATTERIES • TIRES • TUBES
HELMETS • POWER SPORT ACCESSORIES
CERTIFIED SMALL ENGINE MECHANIC



906-493-5663
35239 East Johnstown
Drummond Island, MI 49726

Find us on
Facebook
Beavers
ATV Rental

Sorry, no rentals for 2020 • Repair shop still open by appt.



DRUMMOND ISLAND, MI
www.papirsresort.com
(906) 493-5254
papirsresort@hotmail.com



Located on Scott Bay,
In the Heart of Great Fishing!



Amenities

- Fish Cleaning Station
- Dock Space & Boat Launch
- Wi-Fi at Office
- Bait & Ice
- Fully Furnished Cabins
- Free Firewood
- Boat-Kayak Rentals
- Freezer Space
- Satellite TV
- Pet Friendly

Check the
website for
information
Along with
availability
Calendars.



NORTHERN PROPERTIES
Vacation Home Rentals



"Where Your Satisfaction
Is our Motivation"

(906) 493-5930 OR (800) 292-5064
drummond@hotmail.com
www.northernproperties.com

29507 E Channel Rd
Drummond Island, MI. 49726
Conveniently located 7.6 miles
from the ferry on your left!

Drummond Island REALTY

Serving buyers and sellers for over 50 years!

(906) 493-5230

www.drummondisland-realty.com
29919 E. Channel Road, Drummond Island, MI 49726

Mark A. Copping, CPA

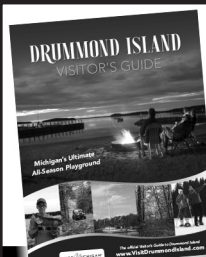
Tax Returns • Tax Problem Resolution
Bookkeeping and Payroll Service
Business & Personal • Peachtree • QuickBooks

(231) 735-7055

29594 E. Channel Rd.
Drummond Island, MI 49726

Accepting
New
Clients

Call for a FREE Consultation!



Planning a trip to
Drummond Island?

Download your
FREE
Visitor's Guide

www.visitdrummond.com



300 Acres of Rock Crawlin' Mud Boggin' Cliff Climbin' Off Roadin'



1 Day Pass \$30
Guest Annual Pass \$50
Non Guest Annual Pass \$100

drummondisland.com
906-493-1000



36183 S. Whitney Bay Rd
Drummond Island, MI 49726
(906) 493-5359

www.fortdrummondmarine.com

- Cabin Rentals
- Camping & RV Sites with Electric Hook-ups
- Boat, Kayak, and Canoe Rentals Available
- Party Store/Beer & Wine
- Daily & Seasonal Dockage

Follow us on Facebook
@fortdrummondmarine



AUTORE

OIL & PROPANE CO.

906.484.2233

Gasoline • Lubricants • Fuel Oil • Propane
Serving the E.U.P. every day since 1955.