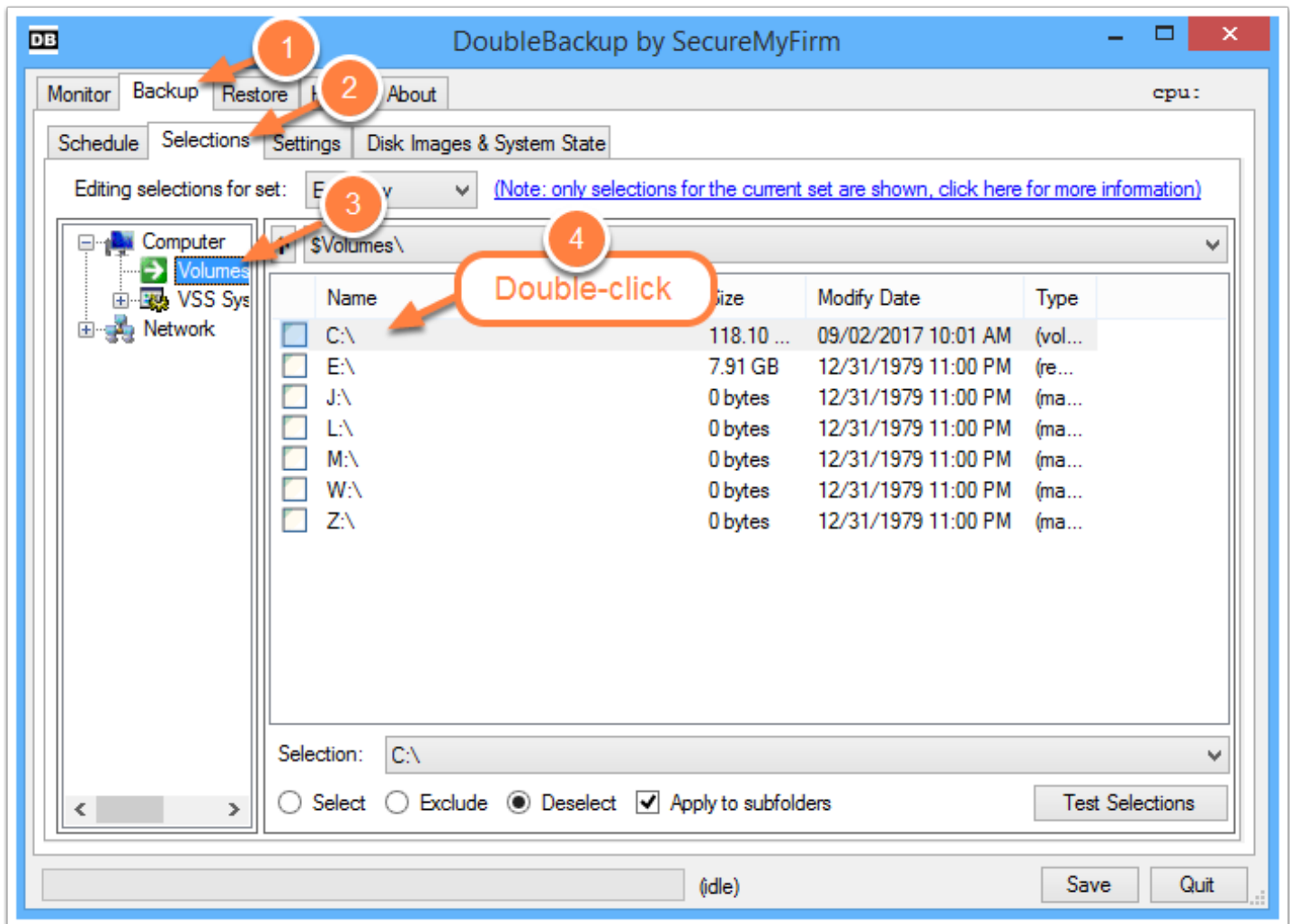


Select Folders to Back Up

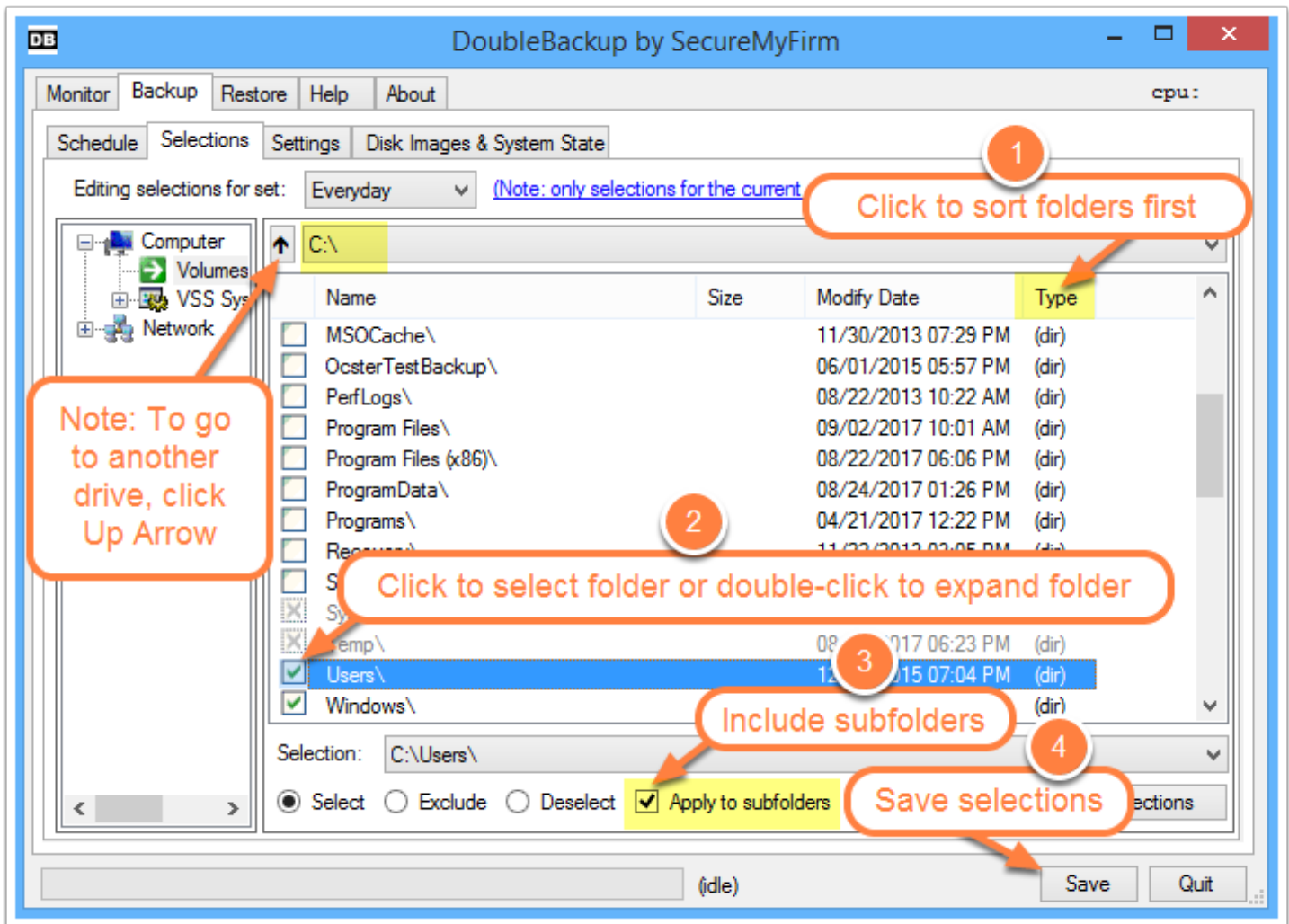
1. Click **Backup** tab.
2. Click **Selections** tab.
3. Click on **Volumes**.
4. **Double-click** on a drive letter.



Select Folders to Back Up

In this example, the **C:** drive was selected. To select folders:

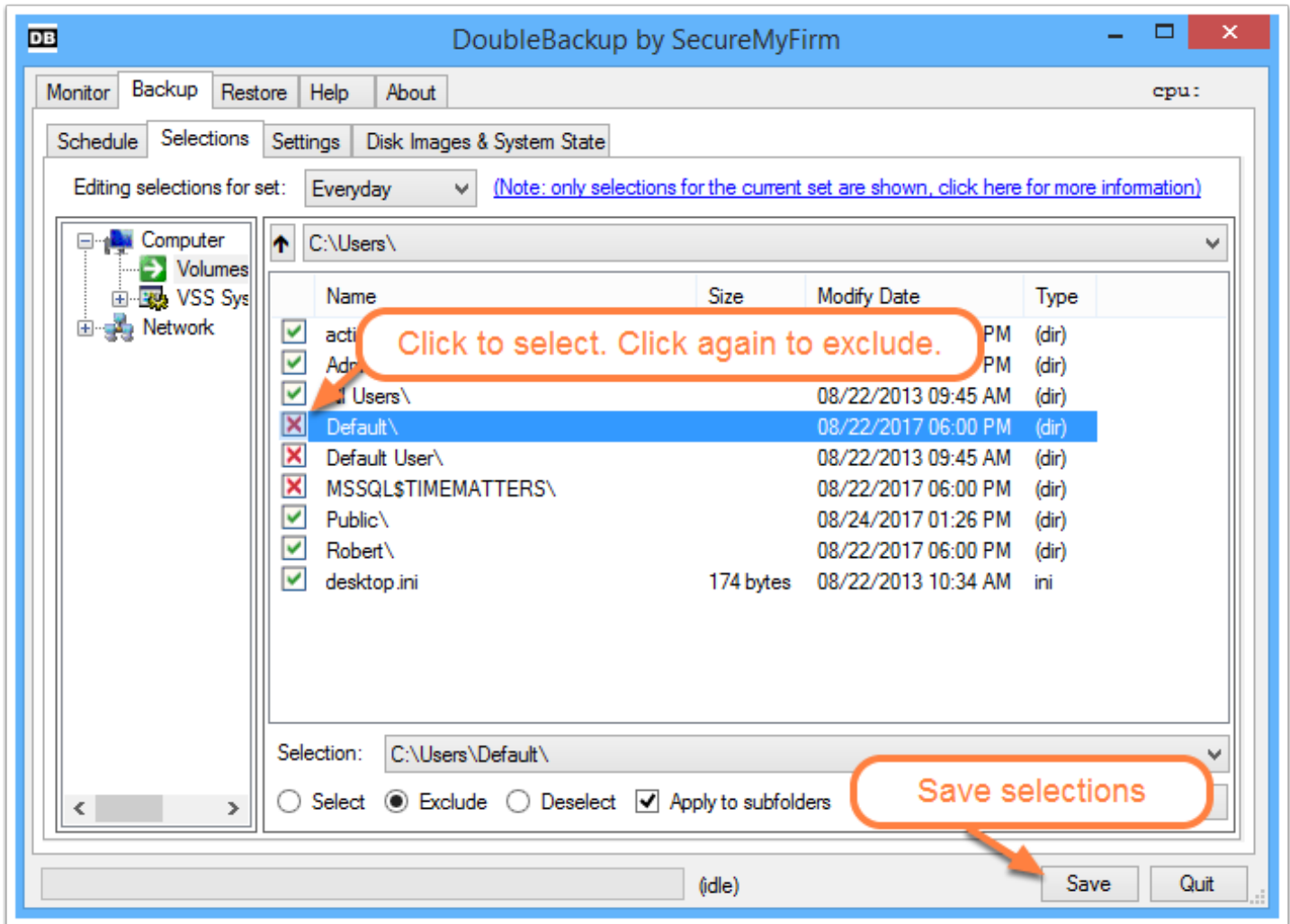
1. Click on **Type** header to sort folders alphabetically.
2. Click each folder you want to protect.
3. Click the **Apply to subfolders** box.
4. Click **Save**



Option to Exclude Folders

Optional:

DoubleBackup lets you precisely control the folders to include or exclude. For example, if you have selected the C:\Users folder and its subfolders, you can open that folder and choose to Exclude one or more files or folders by marking it with a red X.



Launch the Backup

To start the backup immediately: Click **Perform Backup Now**

