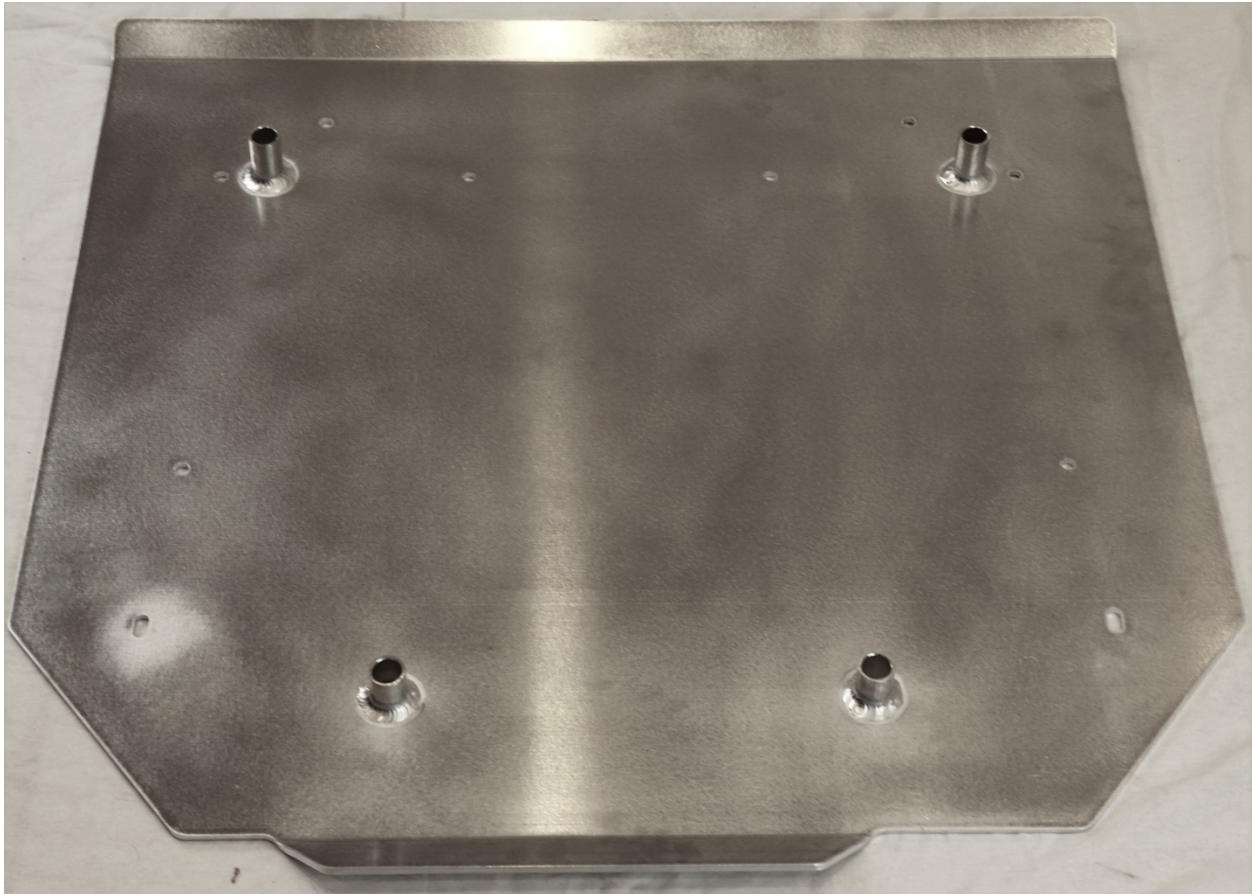




Crawford Performance Overland Series
Front Skid Plate
2018+ Crosstrek

S2201-1 Parts List

Part Number	Quantity	Description
S2201	1	2018+ Crosstrek: Crawford CDR Series Front Skid Plate
B0202	2	Bolt – M8-1.25 x 70 Flange Bolt
B0004	2	Bolt – M8 X 60 10.9 ZN JIS Flange Bolt
W0001	4	Washer – M8 X 25MM Fender Washer



Crawford Performance

Hardware:

Tools Needed:

Flathead Screwdriver



12 MM Socket



1/2" Ratchet Driver



Installation Instructions

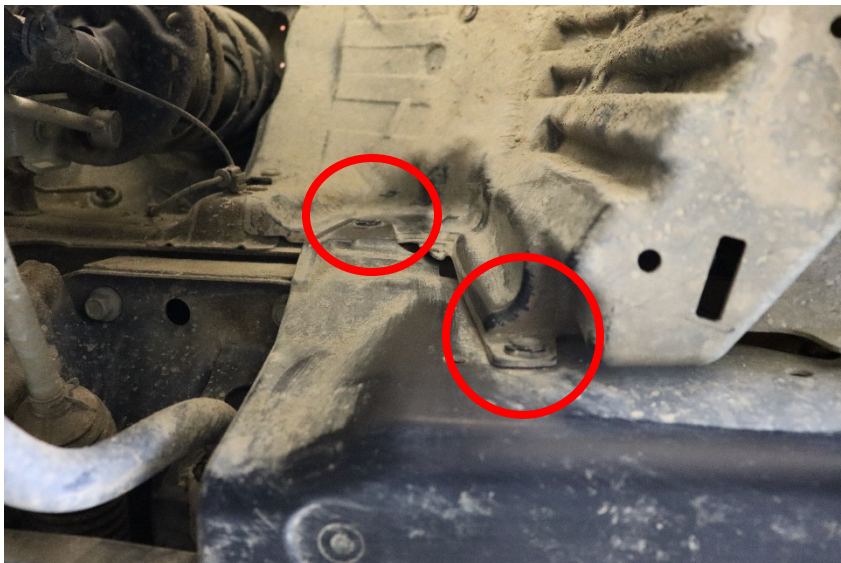
Crawford Performance recommends all steps and procedures described in these instructions be performed while the vehicle is properly supported on a two-post vehicle lift with safety jacks.

Otherwise, park vehicle on a clean flat surface and block the front wheels for safety. Engage the parking brake.

1. Jack the front of the vehicle up and place on jack stands to make access to the OEM Skid plate mounting points easier.



2. Locate the 9 plastic pins holding the edges of the skid plate to the vehicle. 4 can be found on the fender wells. (2 on each side), and 5 can be found near the front of the OEM plate. Remove these pins with a flathead screwdriver. (Flathead Screwdriver)



Driver Side Fender

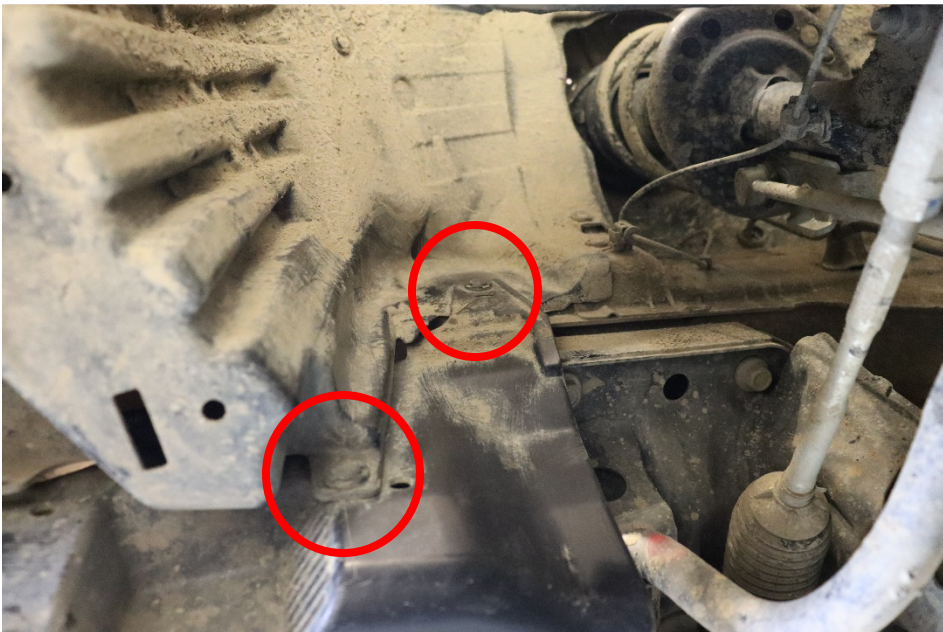
Crawford Performance



Driver Side Valence



Passenger Side Valence



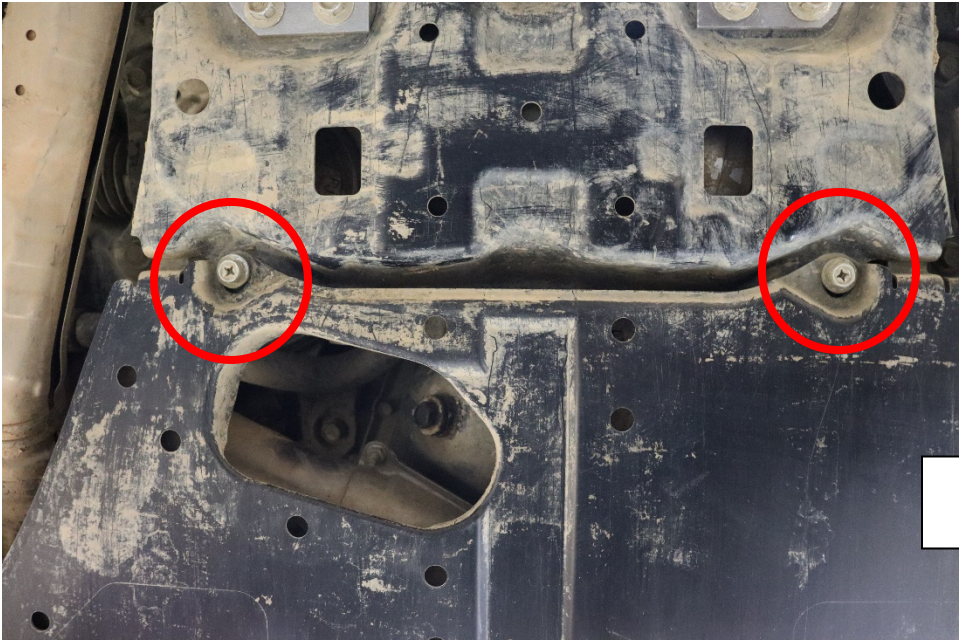
Passenger Side Fender

Crawford Performance



Front and Center of valence pin

3. Remove the four 12 MM bolts at the front and rear of the OEM skid plate. (12 MM Socket)



Rear skid plate bolts



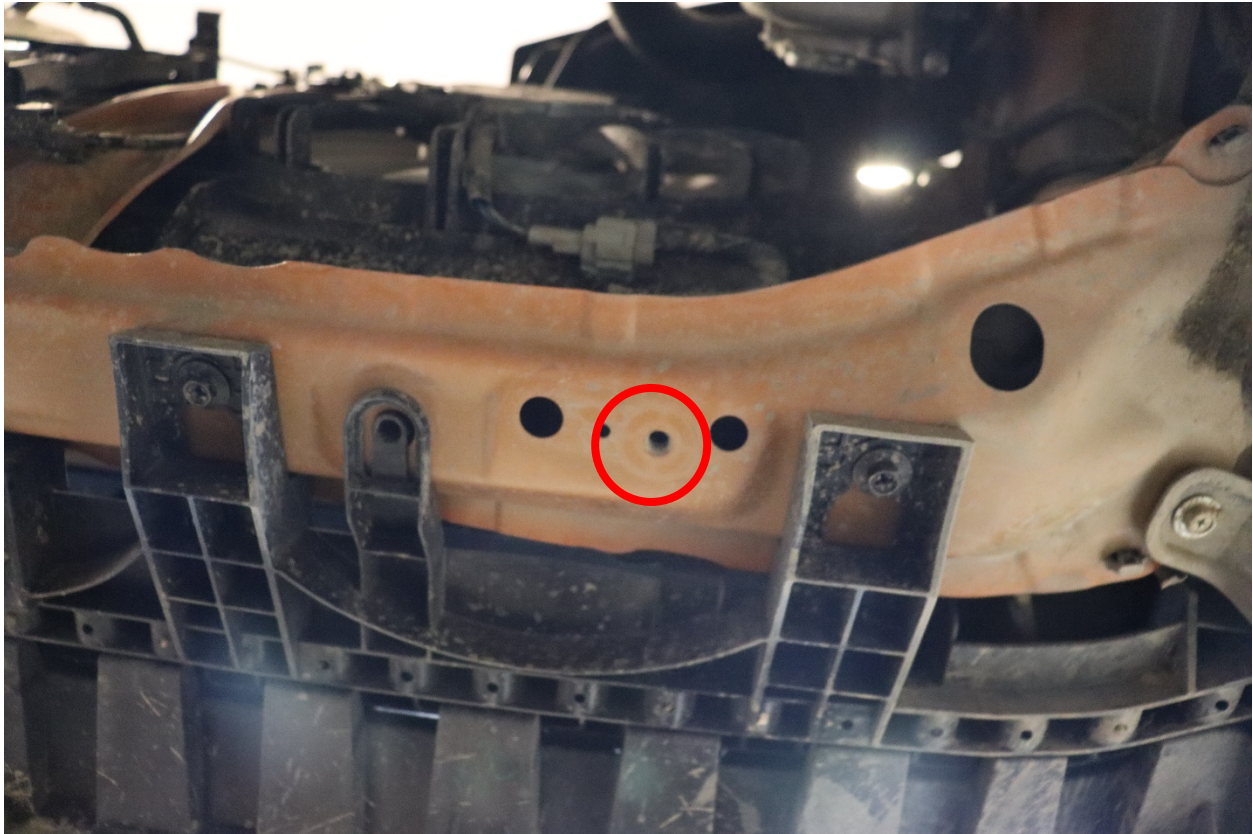
4. Once these pieces of hardware are removed, you can drop the skid plate away from the vehicle.

Crawford Performance

5. Once the skid plate is removed, use a flathead screwdriver to remove the two plastic spacers mounted near the front of the vehicle. (Flathead Screwdriver)



6. Identify the hole you will be fastening the skid plate to.

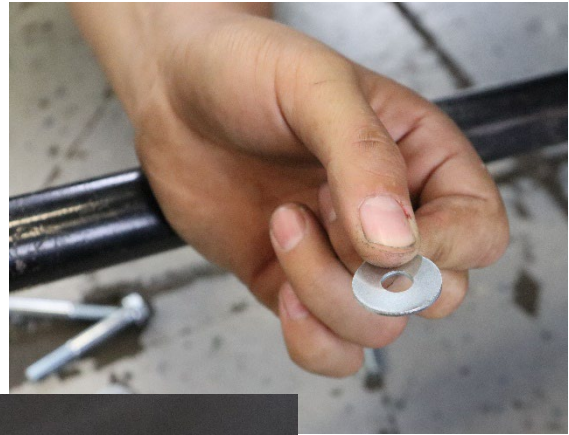
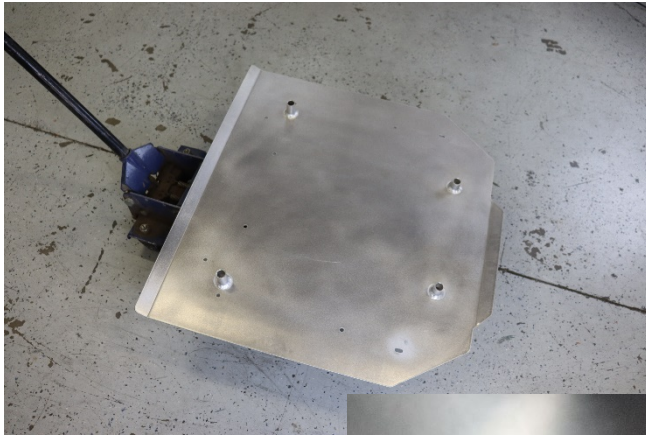


7. Reinsert the plastic clips removed in step 2. You will reinstall the four clips on the front valence of the vehicle, as well as the two upper fender clips removed from the fender.



Crawford Performance

8. You can now lift the skid plate up into position, the easiest method if you are doing this alone will be to use a floor jack to raise the plate up to the subframe. A floor jack is not necessary, however. Place the provided washers over the top of the 4 standoffs as shown before lifting the plate.



9. Lift the skid plate up towards the sub frame of the vehicle and align the bolt holes with the subframe mounting points shown in step 6, and the rear OEM kid plate mounting points shown in step 3. Take care not to lose the washers off the skid plate standoffs when lifting into position.



Crawford Performance

- Using the jack stand as a brace, thread the rear sub frame bolts in loosely with the provided 60 mm flange bolts so that the plate will not fall. Doing this will also make the front alignment easier.



- Fasten the front end of the skid plate with the provided 70 mm flange bolts to the mounting points indicated in step 6.



- Torque the installed hardware at the front and rear of the plate to **18 ft-lbs**.

Crawford Performance

Note: If the CDR Series Front Bumper has already been installed, you must remove the two lower support bolts on either side of the bumper mounting points to have enough room to install the skid plate.



**Thank you for choosing Crawford
Performance!**

**Please feel free to contact us for any questions
or comments! We are here to help. Celebrate your
freshly finished install by cracking a beer and
pouring one out for your chewed-up arms.**

**2319 E Locust Ct. Suite A
Ontario, California 91761
Technical@crawfordperformance.com
(855) 677-8243**

