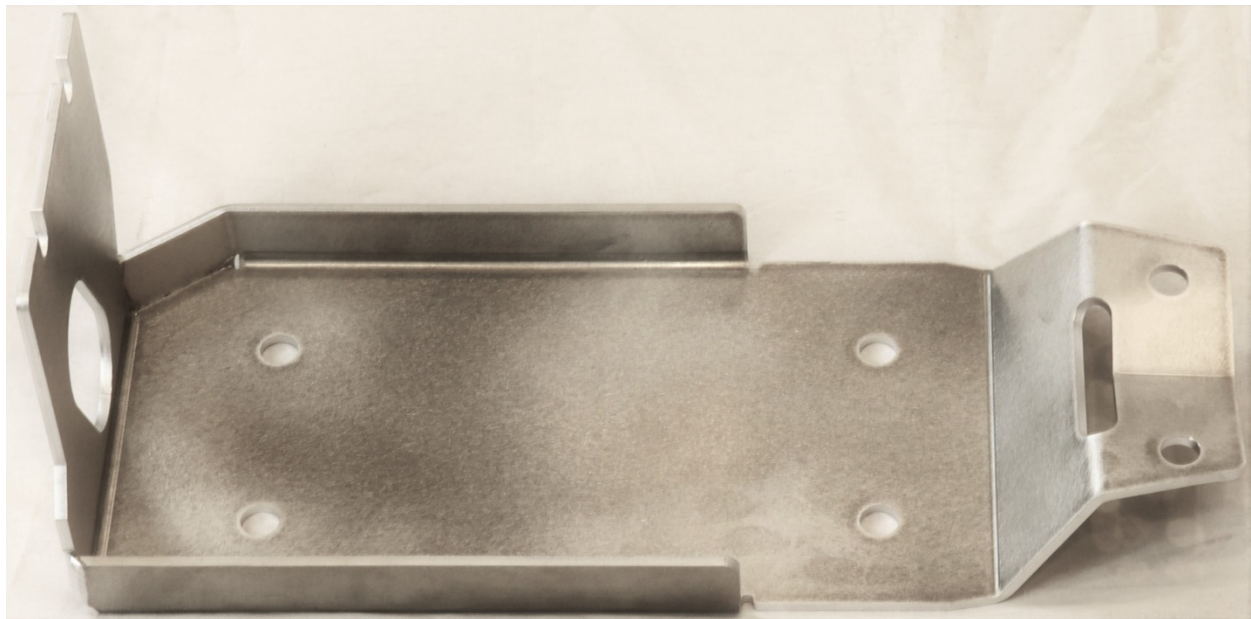




Crawford Performance Overland Series
Differential Skid Plate
2018+ Crosstrek

S2202-1 Parts List

Part Number	Quantity	Description
S2202-1	1	2018+ Crosstrek: Crawford CDR Series Differential Skid Plate
B0001	2	M12 x 1.25 100mm Bolt
N0002	2	M12 Nut



Crawford Performance

Hardware:



Tools Needed

1/2" Ratchet Driver



17 MM Socket



Crow Foot



Large Flathead Screwdriver



Installation Instructions

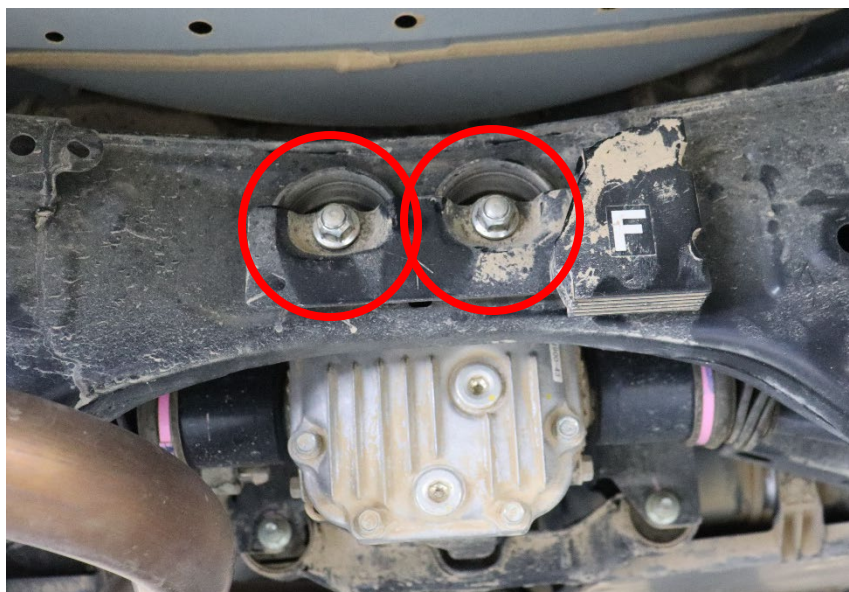
Crawford Performance recommends all steps and procedures described in these instructions be performed while the vehicle is properly supported on a two-post vehicle lift with safety jacks.

Otherwise, park vehicle on a clean flat surface and block the front wheels for safety. Engage the parking brake.

1. Lift the back end of the car up and place on standing jacks for support.



2. Locate the rear differential mounting points on the subframe on the car. They will be located behind the exhaust muffler if you have an OEM exhaust in the center of the car.



Crawford Performance

3. Loosen the two rear differential mounting nuts with a 17 MM ratchet and socket. Do not remove completely. (17 MM Socket, ½" Ratchet Driver)



Crawford Performance

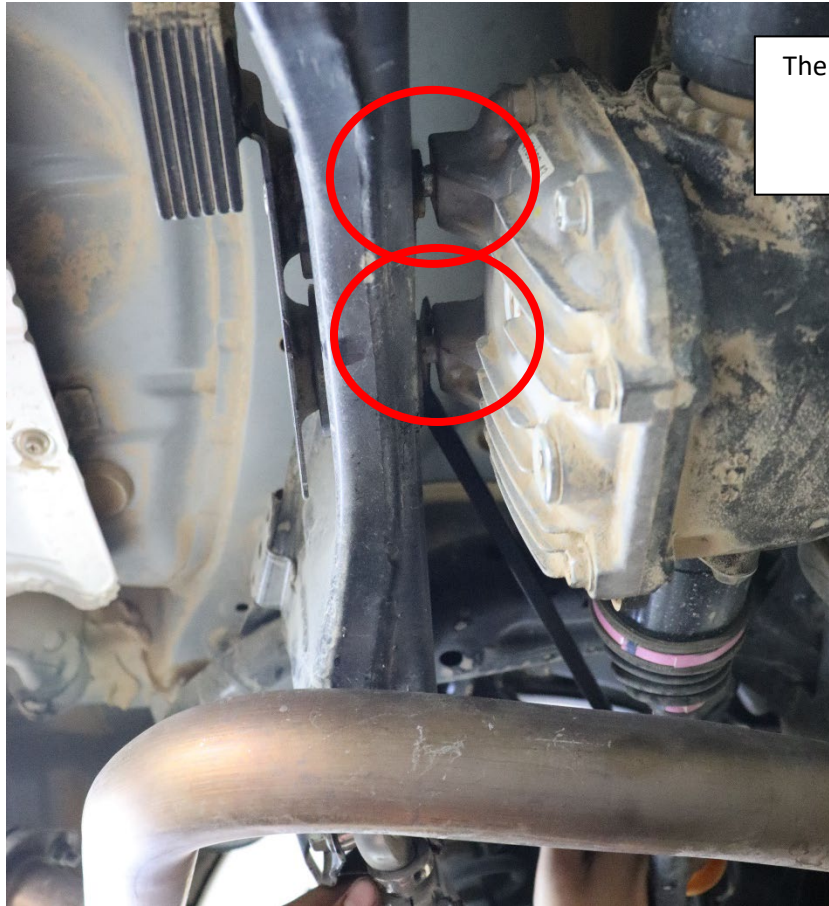
4. Once the differential is loosened, take a crow's foot or any other tool that can be used to put leverage on the differential, and press the differential away from the sub frame mounting location as shown.



Crawford Performance

5. Secure the differential by sliding a prybar between the subframe and the differential mounting points as shown. This is done to maintain clearance when sliding the differential skid plate into place.





The space shown here is the gap you want to maintain to slide the differential plate into place

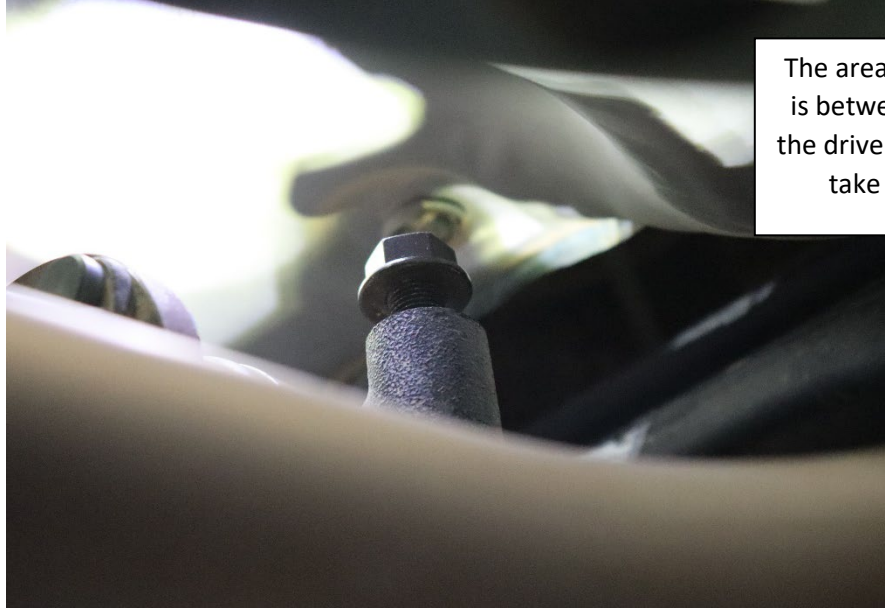
6. While holding forwards pressure on the differential with your prybar, slide the differential plate into position. Make sure to align the two grooves cut into the top of the rear end of the plate to the differential mounting struts shown in step 5. Release the prybar once the plate is in place.



Crawford Performance

7. The plate should stay attached to the vehicle once in place with the prybar released. Heading towards the front of the vehicle, slide the two provided 100 MM bolts through the bottom of the front differential mounting points and the driveshaft u joint. Tighten the nut and bolt using the 17 MM nut provided by hand. Repeat for the remaining bolt.

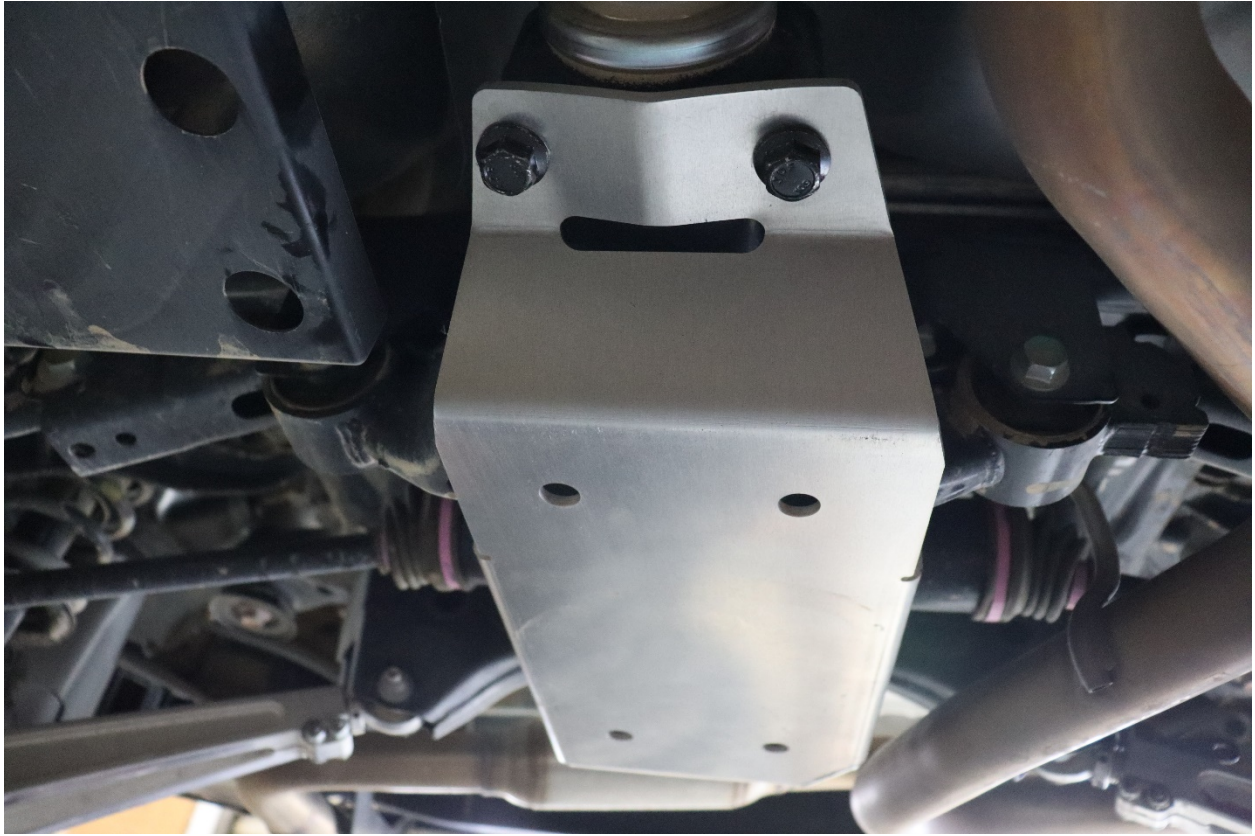




The area where the 17 MM nut goes is between the driveline tunnel and the drive shaft. Starting this nut could take more than one attempt.

8. Tighten the two front plate mounting bolts to **30 ft-lbs.** (17 MM Socket, ½" Ratchet Driver, 17 MM Wrench)





9. Tighten the rear sub frame nuts to **30 ft-lbs.** (17 MM Socket, ½" Ratchet Driver)





Thank you for choosing Crawford Performance!

**Please feel free to contact us for any questions
or comments! We are here to help. Celebrate your
freshly finished install by cracking a beer and
pouring one out for your chewed-up arms.**

**2319 E Locust Ct. Suite A
Ontario, California 91761
Technical@crawfordperformance.com
(855) 677-8243**

