



Crawford Performance Overland Series
Front Bumper Light Pod Kit
2018+ Crosstrek

L0003 Parts List

Part Number	Quantity	Description
W2203-1	1	Wire – Crosstrek Mirror Harness
L2270	3	Light – KC SlimLite LED 6” Spot Beam Black
B2240-1	1	Bumper – 18-20 Crosstrek Front Bumper Kit



Crawford Performance

Hardware:



Tools:

9/16" Socket



1/2" Socket



9/16" Ratchet Wrench 1/2" Ratchet Wrench 1/2" Ratchet Drive



14 MM Socket



14 MM Wrench



Estimated Install Time: 2-3 Hours

Install Difficulty: 5/10

Wiring Harness Installation

1. Remove the positive battery terminal and set on a rag to avoid shocking or sparks.

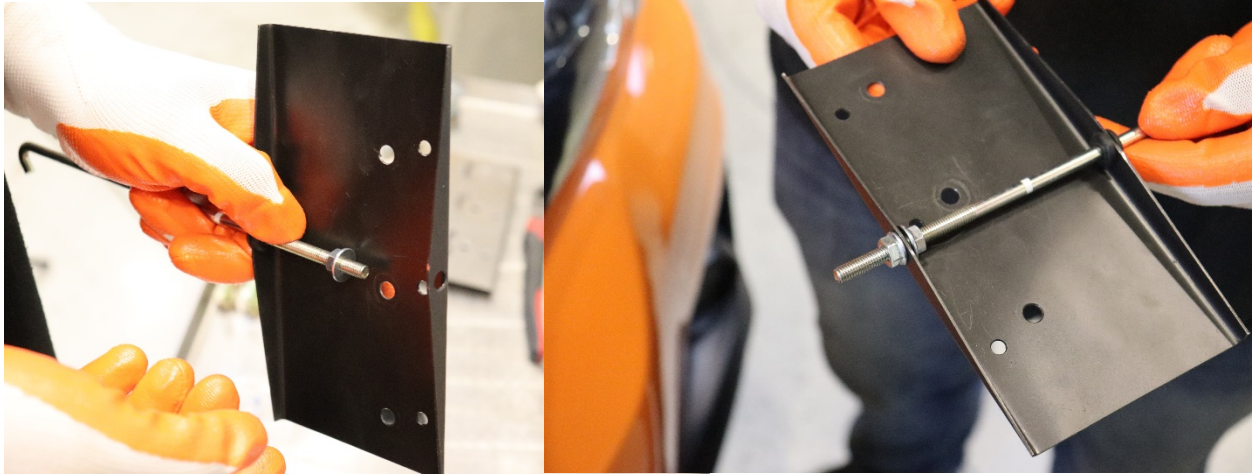


2. Remove the Battery Brace Strut. (10 MM Socket)

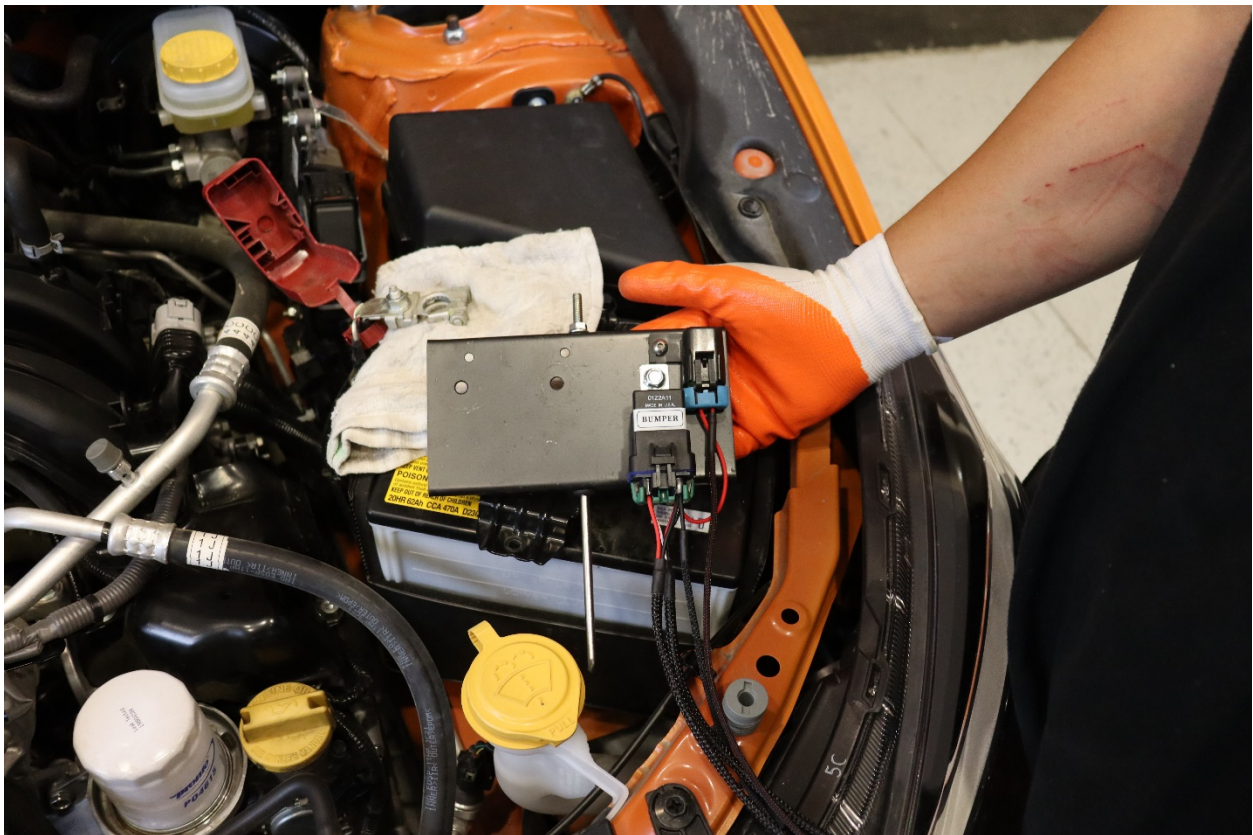


Crawford Performance

3. If the optional circuit board bracket was purchased with the kit, slide the bottom end of the relay mounting plate over the battery brace strut. Thread the supplied nut onto the strut about 2 inches down the strut body. This nut will be used to support the relay plate and prevent it from sliding. Slide the strut through the top of the relay plate and pinch it in place with another provided nut. If the circuit board bracket is not being used, you will need to find another spot to mount the relays and fuses.



4. Attach the hood light pod relay to the relay plate. (position on the plate does not matter)



Crawford Performance

5. Secure the battery strut and relay plate by re-inserting it back to its OEM position and securing with the OEM nut removed in step 2. (10 MM Socket)

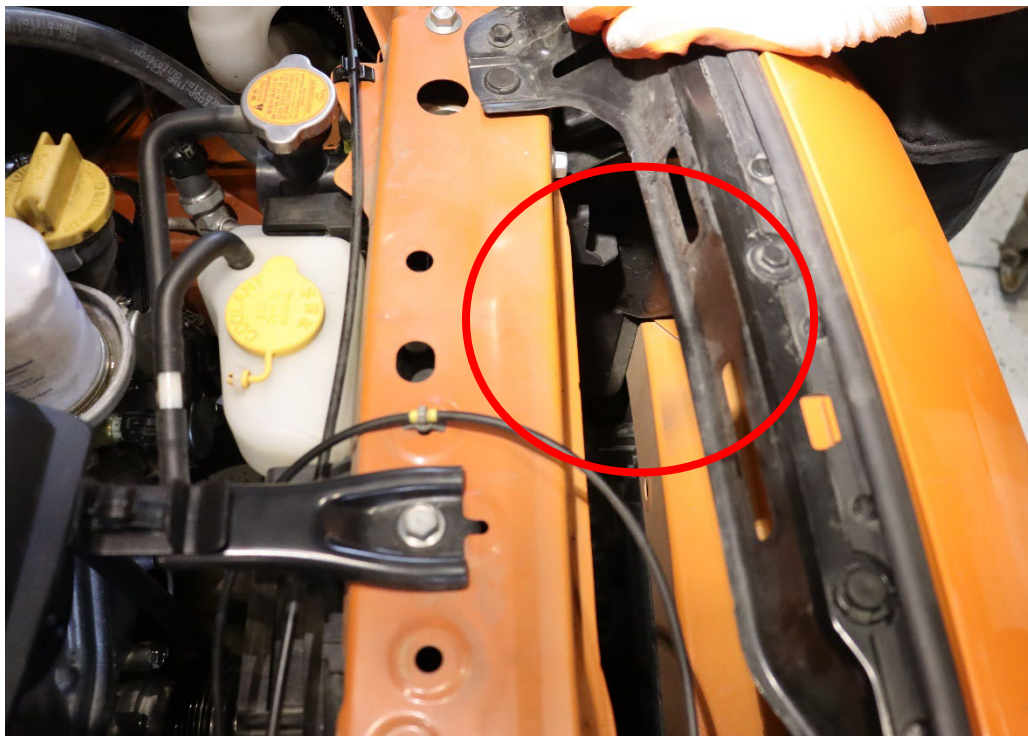


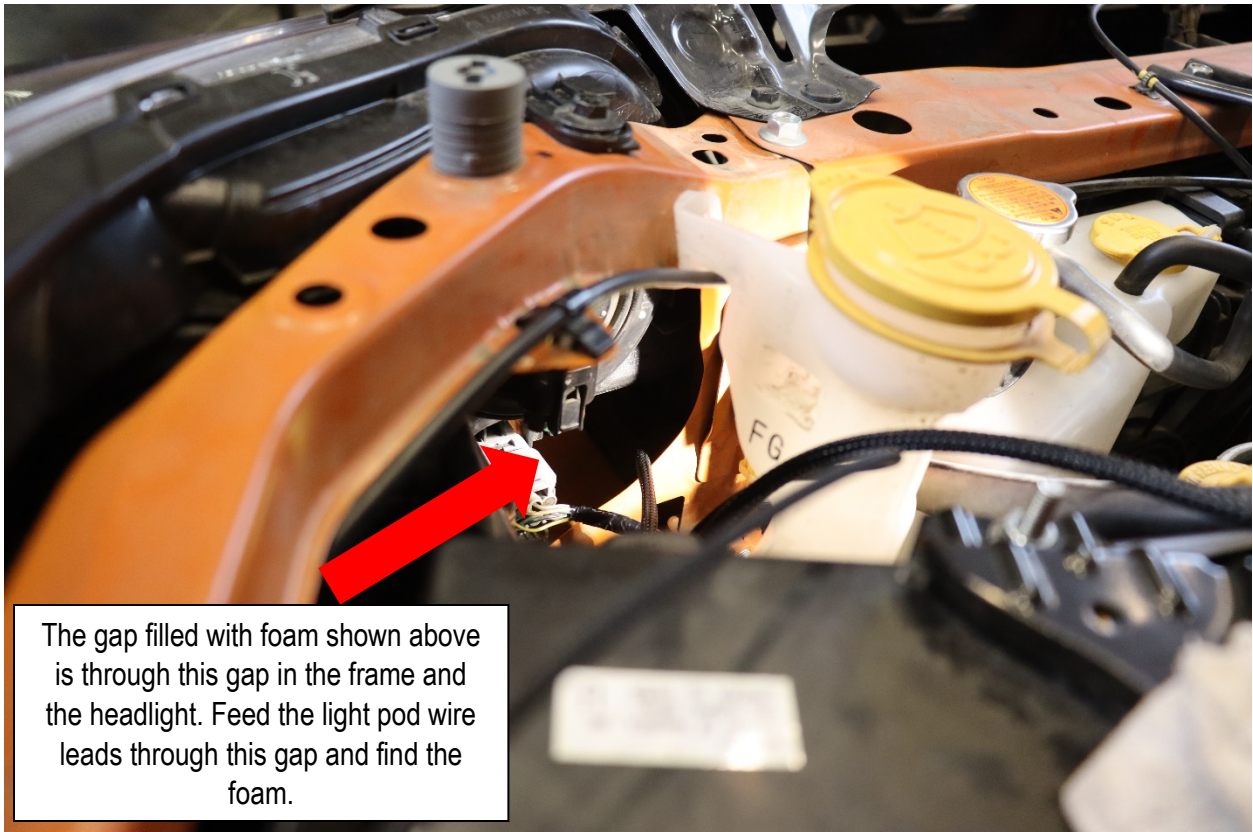
6. Remove the engine dressing at the front of the engine bay by removing the plastic pins shown below. Use a flathead screwdriver and be careful not to break any pins.





7. Next will be routing the wire connecting ends behind the front bumper. Find the gap in the front fascia that is filled with a foam insert. The location is shown below. The wire ends will be fed through this gap from behind the headlight.

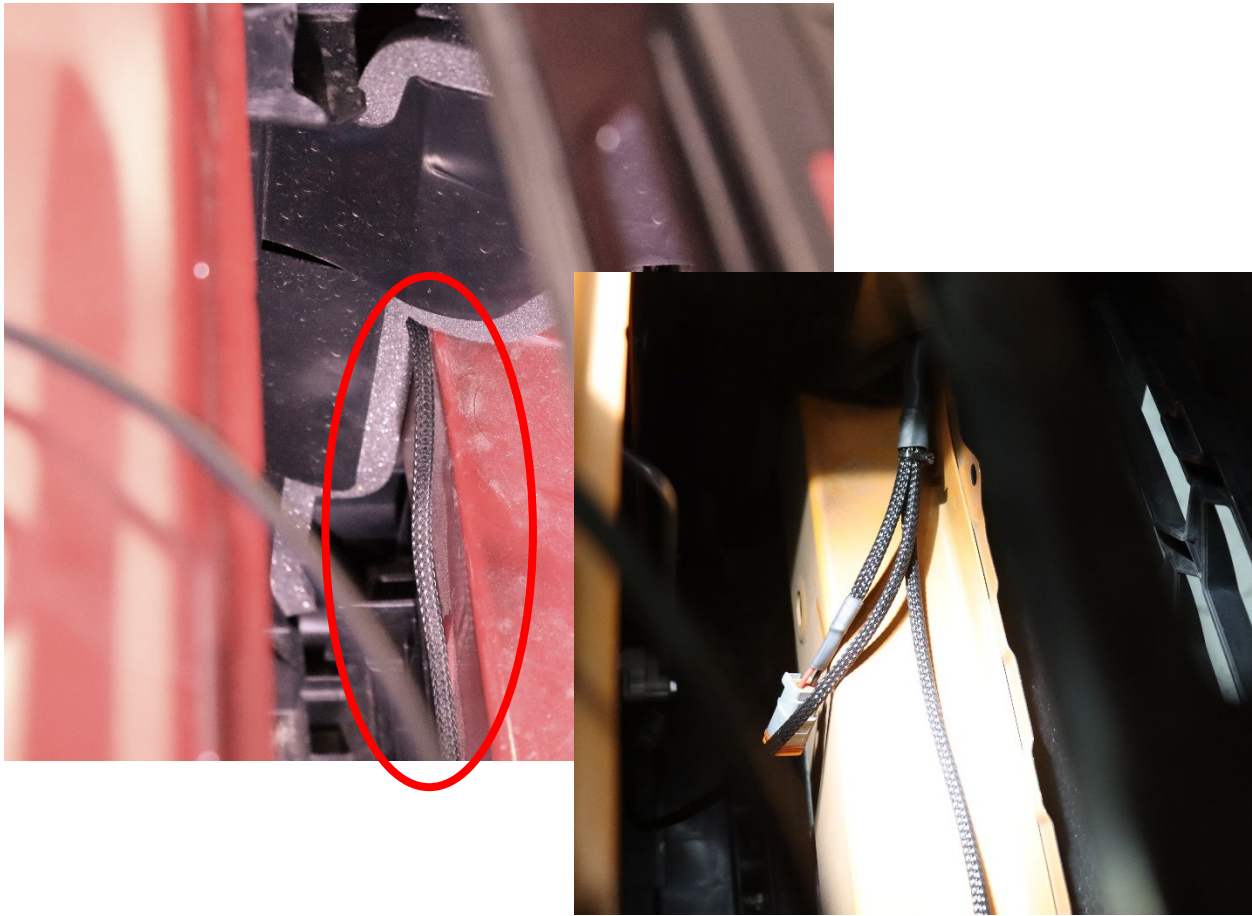




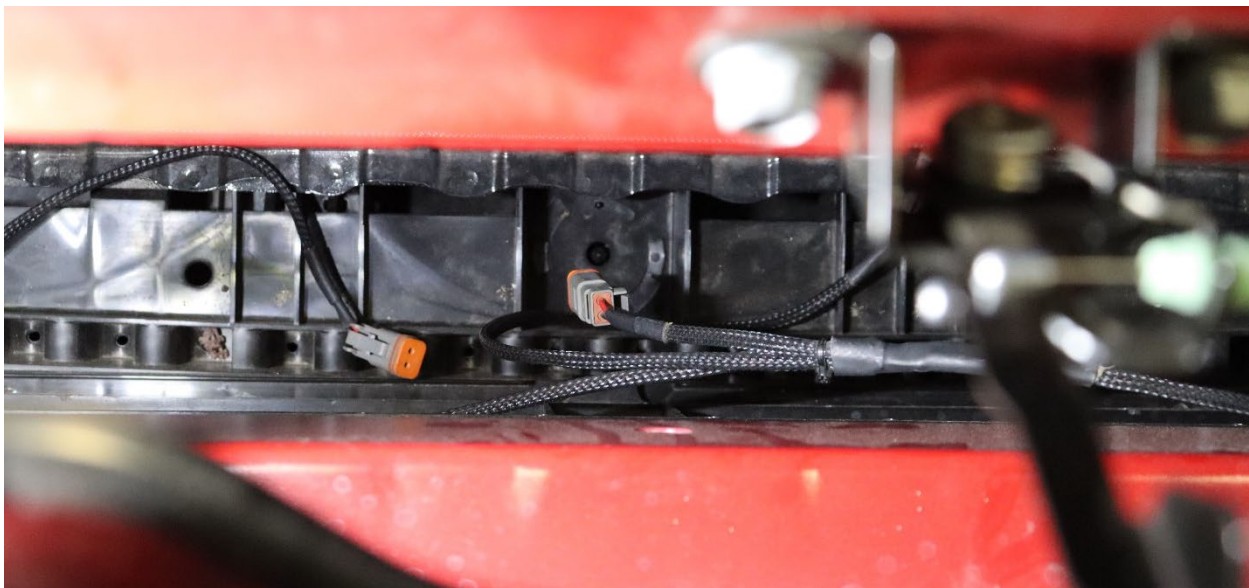
The gap filled with foam shown above is through this gap in the frame and the headlight. Feed the light pod wire leads through this gap and find the foam.

Crawford Performance

8. Feed the wire leads through the foam and pull the wire through so that it is visible through the gap made after removing the engine dressing in step 6.



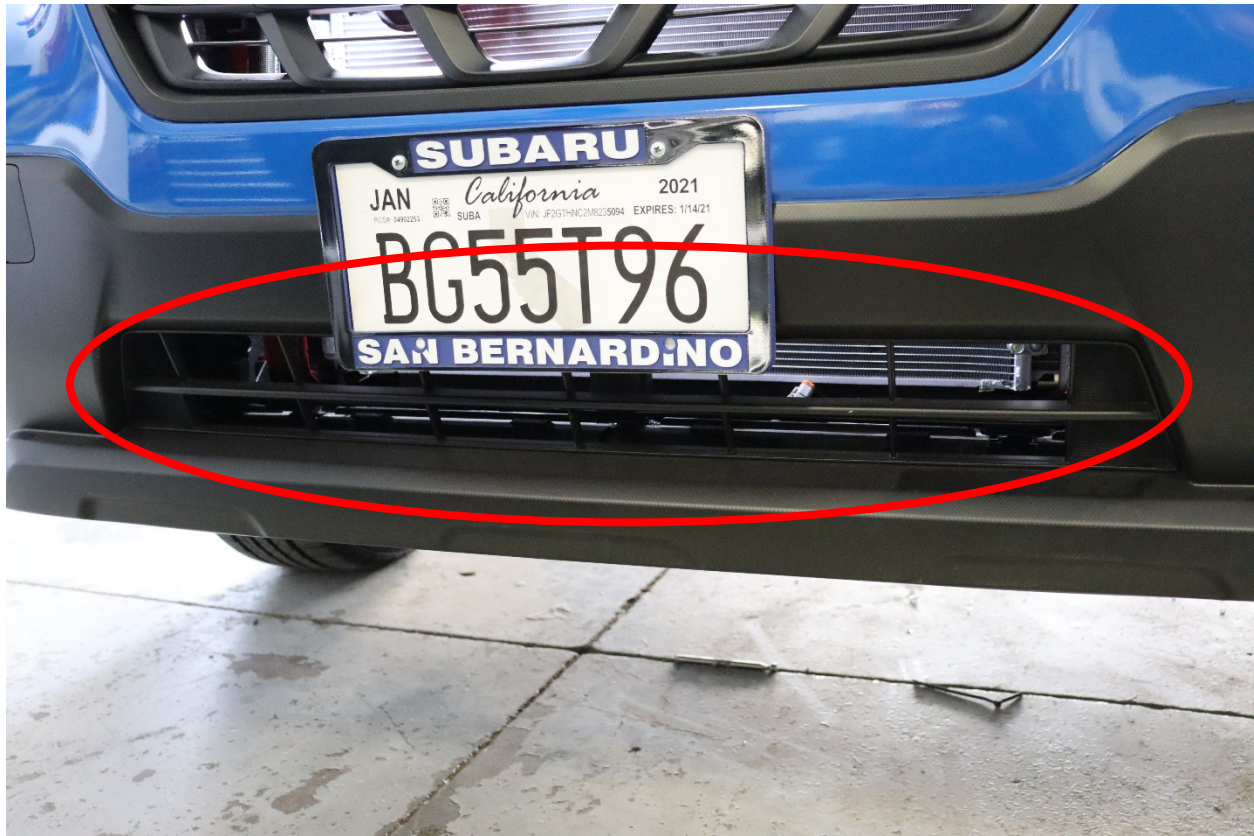
9. After pulling the three light wire leads through the foam divider shown in step 8, run the wires down to the skid plate pan so that they are visible from the lower grille inlet.



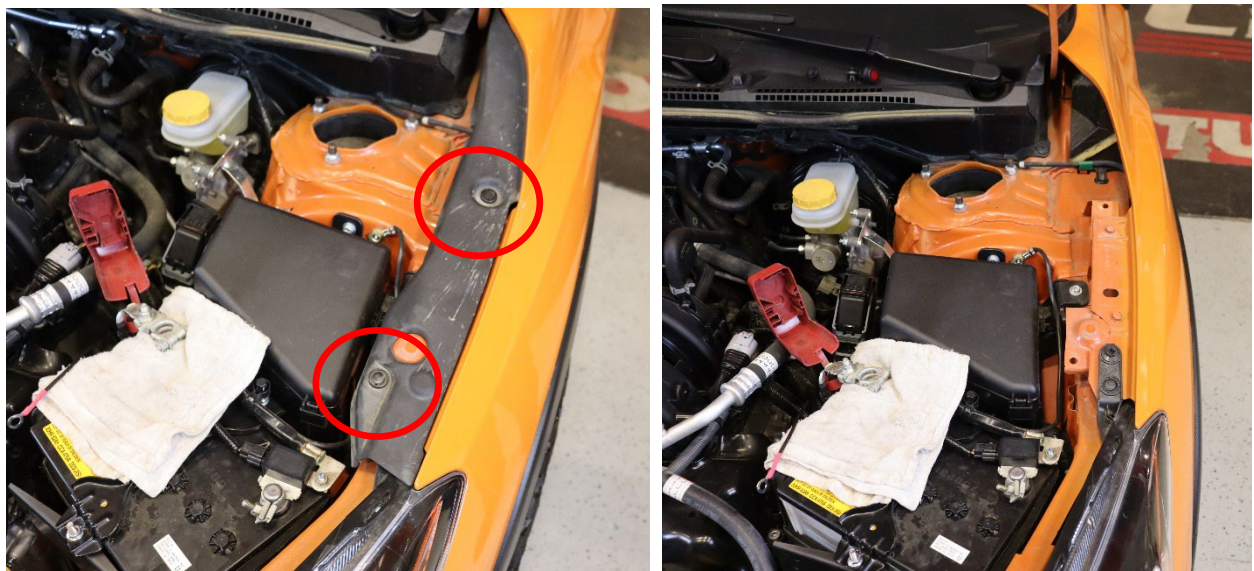


Crawford Performance

10. Your pod wires should be visible through the lower grille after step 9. You will come back to these plugs when the lights are ready to be installed.

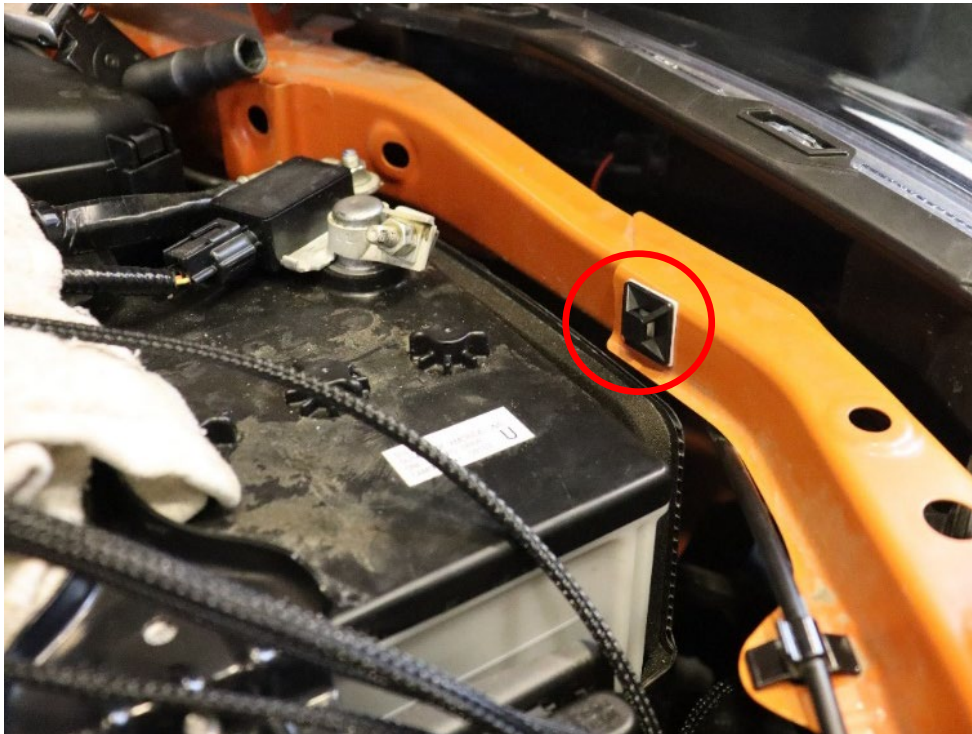


11. Remove the plastic trim piece above the driver side fender by releasing the two plastic clips as shown.



Crawford Performance

12. Place a provided sticky harness on the fender rail directly right of the battery.



13. Use a provided wire tie to secure the wire leads to the sticky harness on the fender.

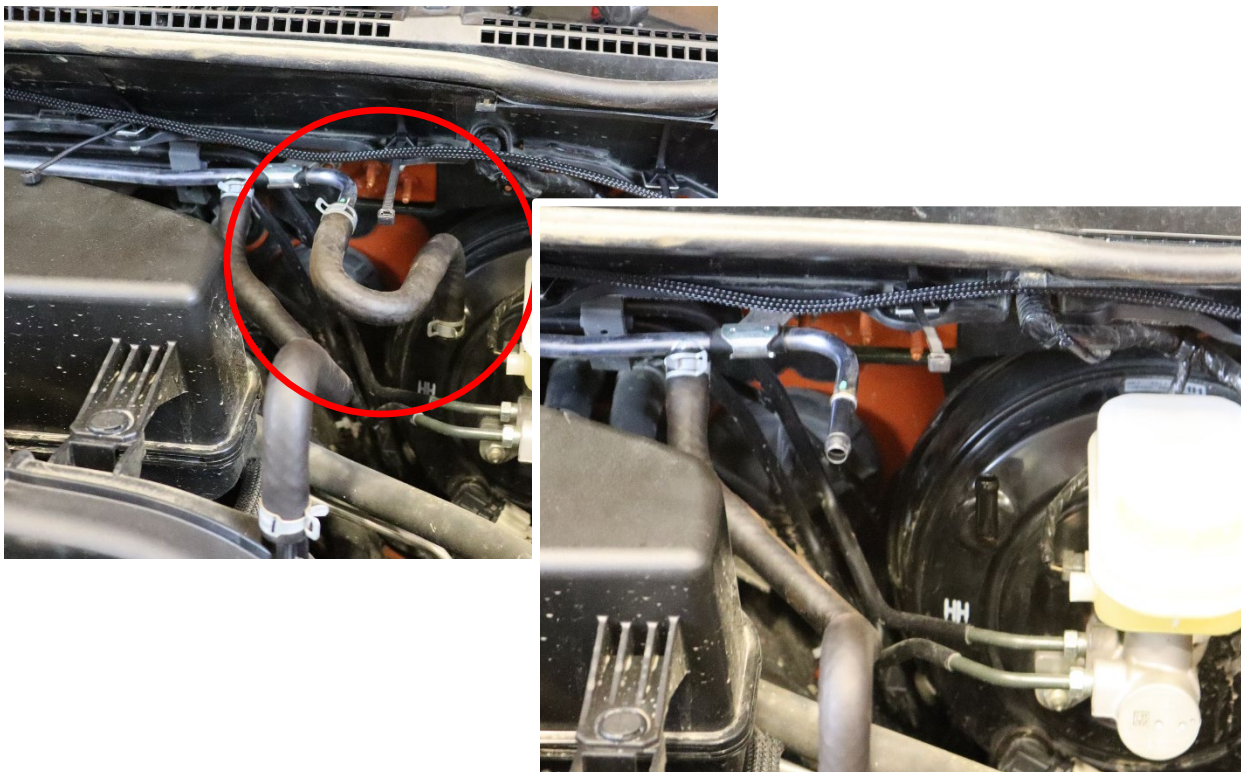


Crawford Performance

14. Route the switch wire towards the top of the driver side of the engine bay and set to side.

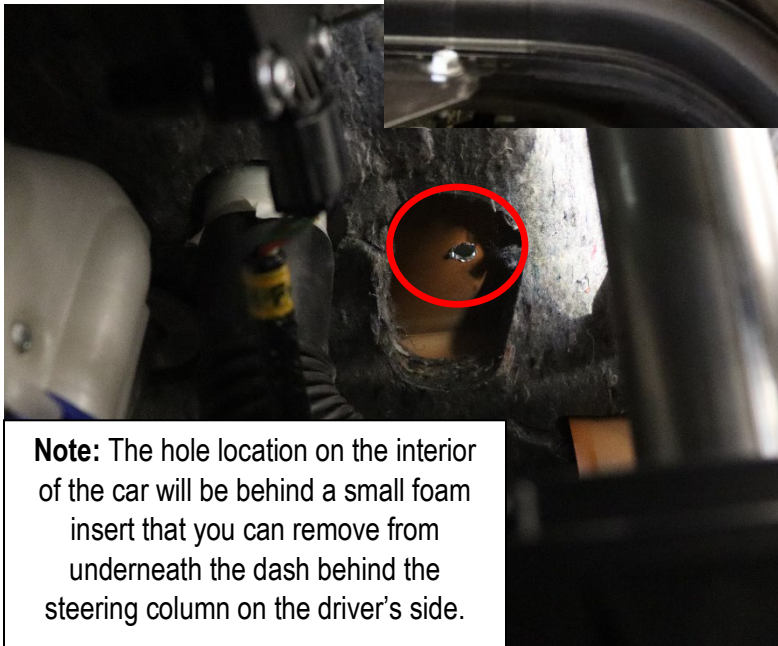


15. Remove the vacuum line leading to the master brake cylinder. (Needle Nose Pliers)



Crawford Performance

16. Drill a hole through the firewall in the area indicated below using a 7/8" drill bit.

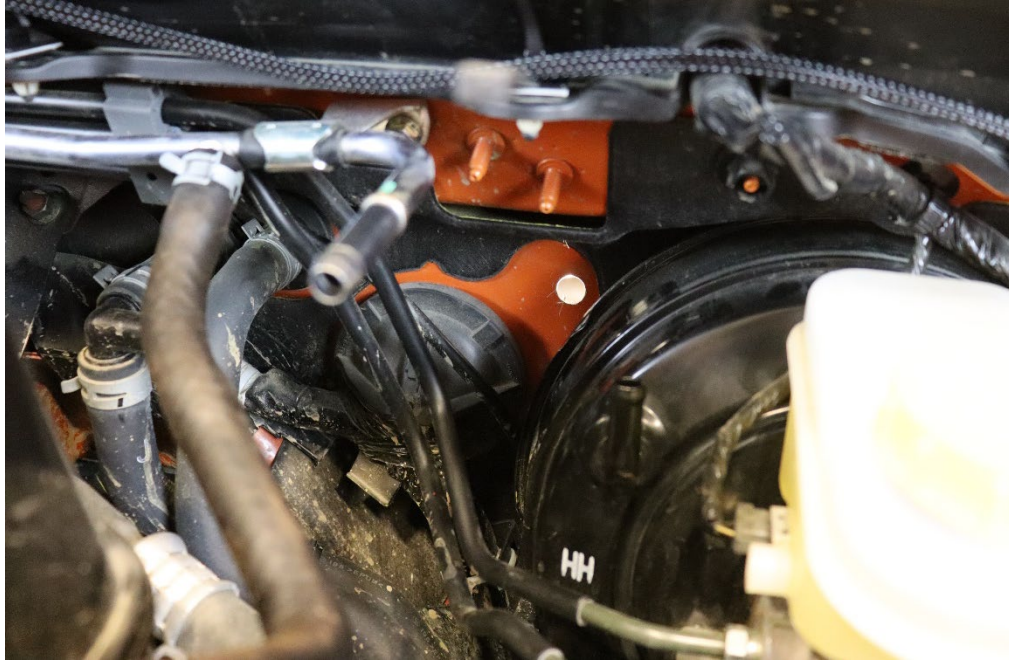


Note: The hole location on the interior of the car will be behind a small foam insert that you can remove from underneath the dash behind the steering column on the driver's side.



Crawford Performance

17. Clean out the hole to prepare it to receive the rubber grommet. Once clear of debris, insert the provided grommet.



18. Remove the wire ends connecting the provided switch to the wiring harness, taking note of how the leads are connected to the switch. (Black to Gold/Top relay, White to middle relay, Red to bottom relay)

Crawford Performance

19. Feed the switch wire lead through the hole and into the vehicle cabin so that the wire ends are in front of the fuse board.



20. Remove the fuse board cover and drill a hole for the switch to be set into.



Crawford Performance



21. Remove the switch from the fuse board cover panel and reinstall the panel into the car. Feed wires from firewall through the panel hole you just drilled out.



Crawford Performance

22. Install the wire ends to the switch and re-insert the switch into the fuse board cover.

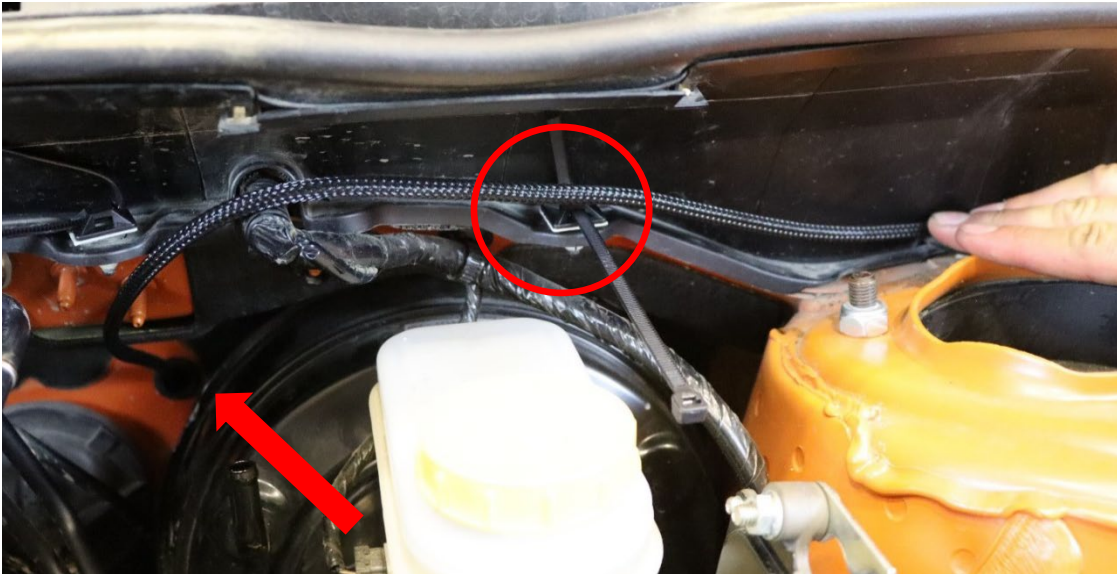


23. Returning to the engine bay, fasten the positive and negative eyelets leading from the wiring harness to the battery as shown. For the negative terminal, zip tie the wires leading to the top of the engine bay along the fender structure together, where the negative eyelet can still split off and attach to the battery.



Crawford Performance

24. Take the switch wire that is running through the firewall and put a sticky harness at the location shown below on the driver's side. Fasten the wire to this harness, while leaving enough room to feed the wire under the plastic trim piece removed in step 10.



25. Use Zip Ties to bundle the wires leading away from the battery and relay plate together. This will keep the set up clean and ensure the switch wire runs smoothly under the plastic fender trim removed in step 10.
26. Use the provided Zip Ties where necessary to keep wires bundled and away from areas that may damage them.
27. Re attach the plastic fender trim piece removed in step 6, making sure the wire runs underneath the trim.



28. Re-install the vacuum hose removed in step 14. Make sure that all wires are secure and not at risk of receiving damage from the engine bay.

Front Bumper Installation Instructions

Crawford Performance recommends all steps and procedures described in these instructions be performed while the vehicle is properly supported on a two-post vehicle lift with safety jacks.

Otherwise, park vehicle on a clean flat surface and block the front wheels for safety. Engage the parking brake. We Recommend keeping any OEM parts removed just in case this install needs to be undone.

1. Jack the front of the vehicle up and place on jack stands to make access to mounting points easier.



2. Locate the bumper mounting points on the driver and passenger side of the car.





3. Clear debris and dirt out of the mounting points.



Crawford Performance

4. Insert the provided step-down spacers into the mounting points so they sit flush with the plate.



Crawford Performance

- Steps 5-10 will be easier with a friend to help support the bumper in place. **Note:** Only the passenger side of the vehicle is shown, but the process in steps 5-10 is the same for both sides. Lift the bumper so the mounting tabs are positioned on the inside of the vehicles mounting points. Place a 5/16" washer over the provided 5/16" bolts and push it through the step-down spacer and front bumper hole.



- Place a 5/16" washer on the exposed 5/16" bolt on the inside of the bumper.



Crawford Performance

7. Thread on the 5/16" nut to the exposed bolt end by hand.



8. Place a 3/8" washer over the provided 3/8" bolt and push it through the rear hole on the mounting plate and bumper.



Crawford Performance

9. Place a 3/8" washer over the exposed 3/8" bolt end.



10. Thread on 3/8" nut to the exposed bolt end by hand.



Crawford Performance

11. Adjust bumper position to desired location and tighten down the hardware on both sides to **30 ft-lbs.** (9/16" Socket, 9/16" Ratchet Wrench, 1/2" Socket, 1/2" Ratchet Wrench)



Crawford Performance



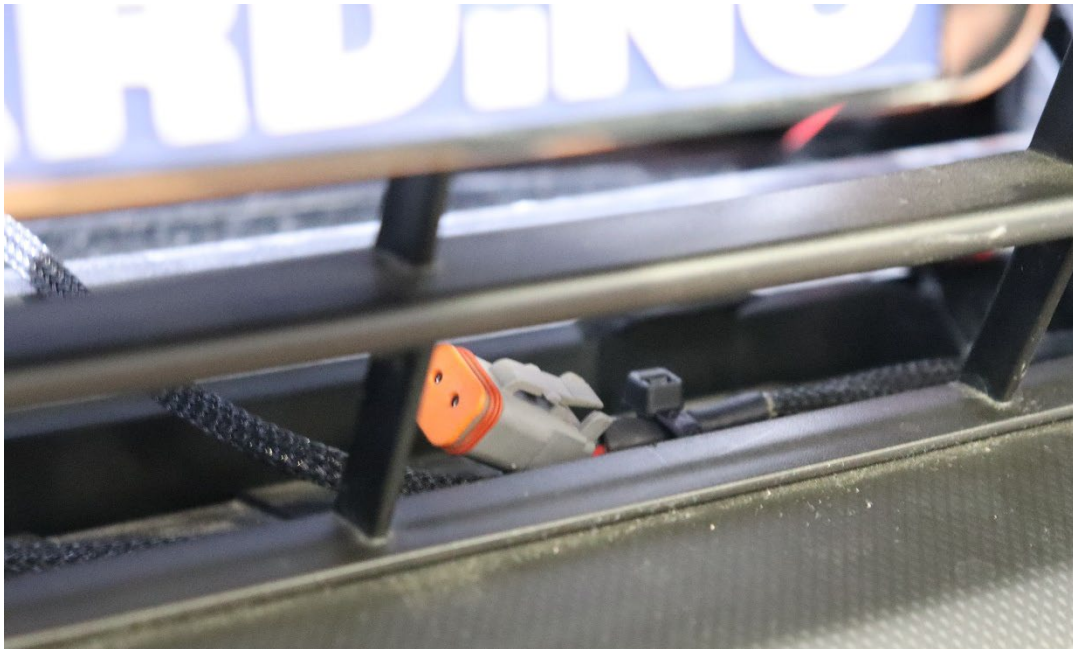
Continue for the light installation

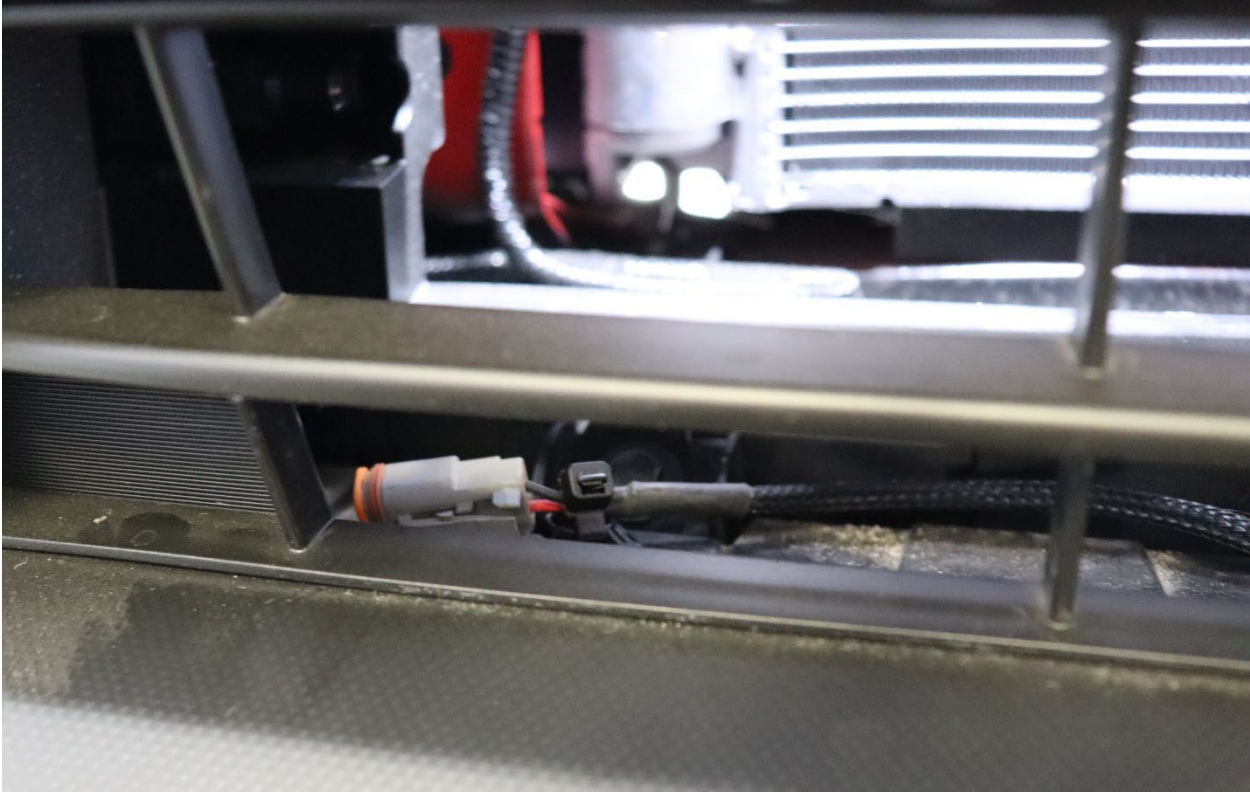
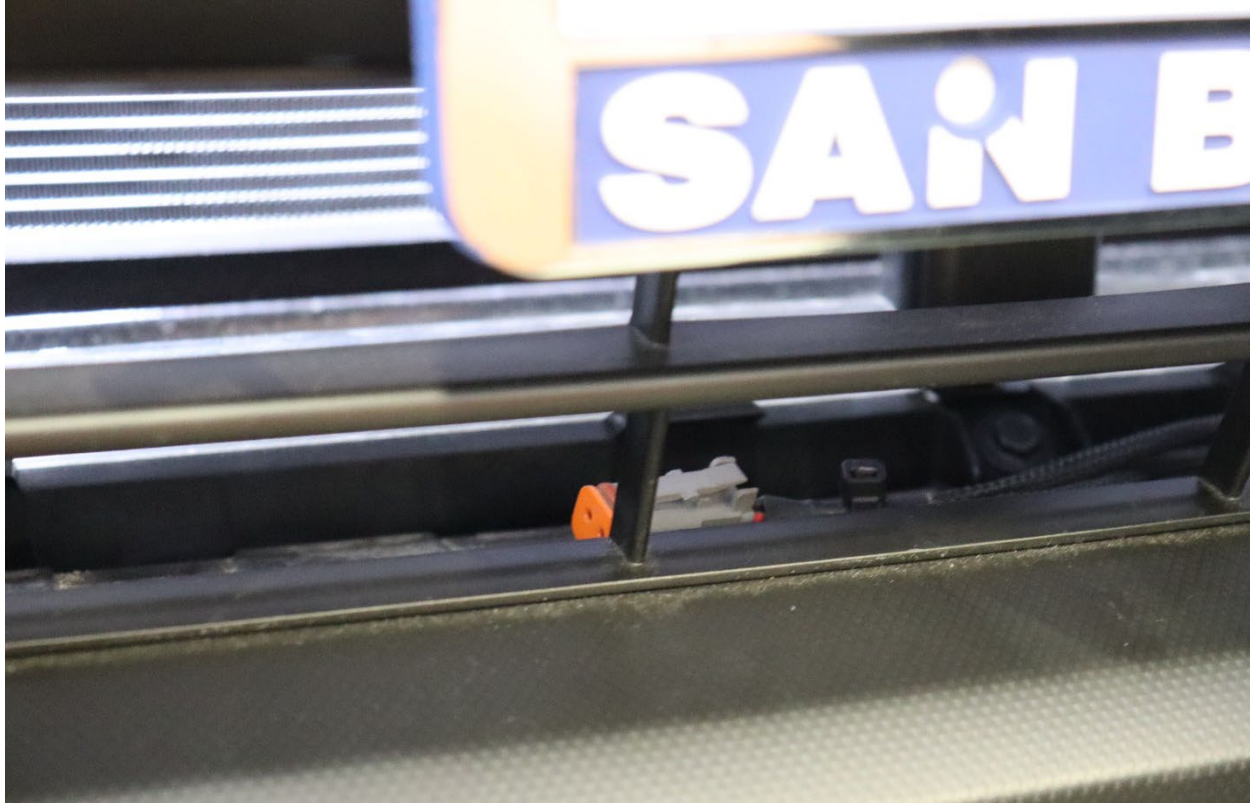
Light Pod Installation Instructions

1. Install the provided KC HiLites 6-inch SlimLights using the provided hardware.



2. Return to the lower grille to secure the light connections laying behind the grille with sticky tabs. Choose a location near the front of the grille with enough slack to prevent tugging or damage to the wires. Clean the areas before installing the tabs.





Crawford Performance

3. Install the KC SlimLites using the provided hardware to the three gussets on the lower bumper bar.





4. Plug the lights into the wiring harness.



Crawford Performance

5. Finish the installation by tightening and aiming the lights.



Thank you for choosing Crawford Performance!

Please feel free to contact us for any questions or comments! We are here to help. Celebrate your freshly finished install by cracking a beer and pouring one out for your chewed-up arms.

**2319 E Locust Ct. Suite A
Ontario, California 91761
Technical@crawfordperformance.com
(855) 677-8243**

