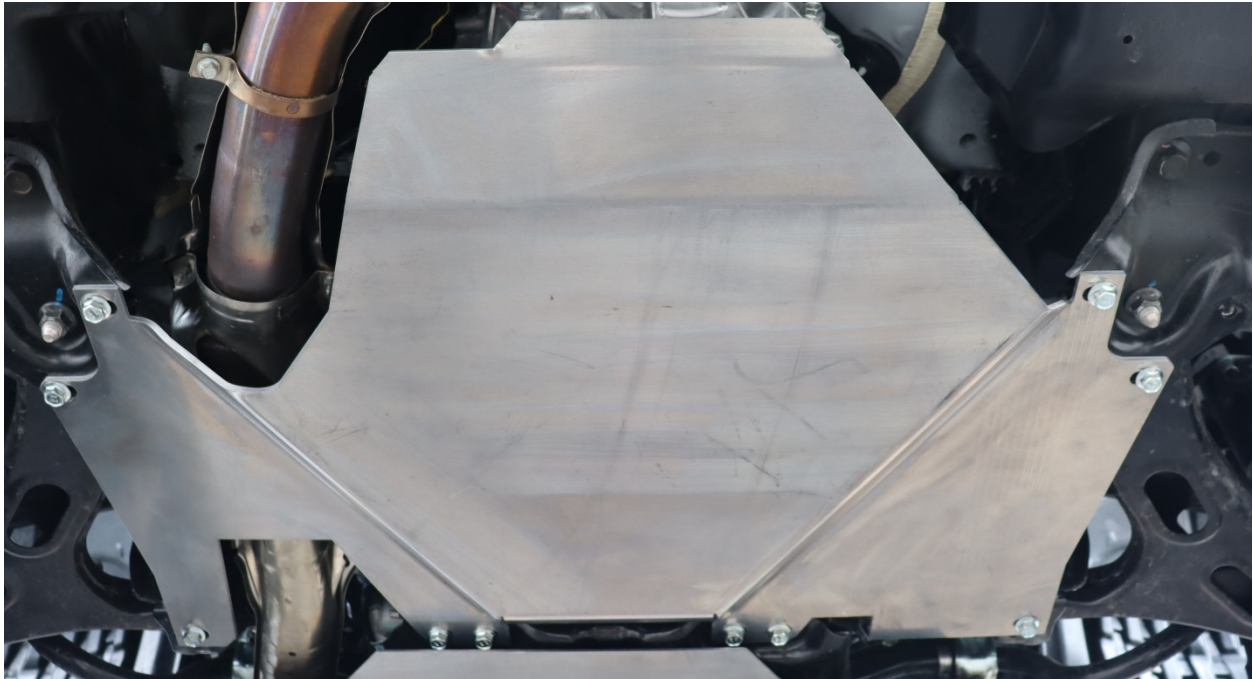




Crawford Performance Overland Series
Transmission Plate Cover
2018+ Crosstrek, 2019+ Forester

S2201 Parts List

| Part Number | Quantity | Description |
|-------------|----------|---|
| S2201 | 1 | Transmission Plate – 18+ Crosstrek Transmission Plate |



Tools Needed:

- 14 MM Socket
- 1/2" Ratchet Drive



Installation Instructions

Crawford Performance recommends all steps and procedures described in these instructions be performed while the vehicle is properly supported on a two-post vehicle lift with safety jacks.

Otherwise, park vehicle on a clean flat surface and block the front wheels for safety. Engage the parking brake. We Recommend keeping any OEM parts removed just in case this install needs to be undone.

1. Jack the front of the vehicle up and place on jack stands to make access to mounting points easier.



2. Remove the sub frame support structures by removing the 12 14 MM bolts shown (14 MM Socket)



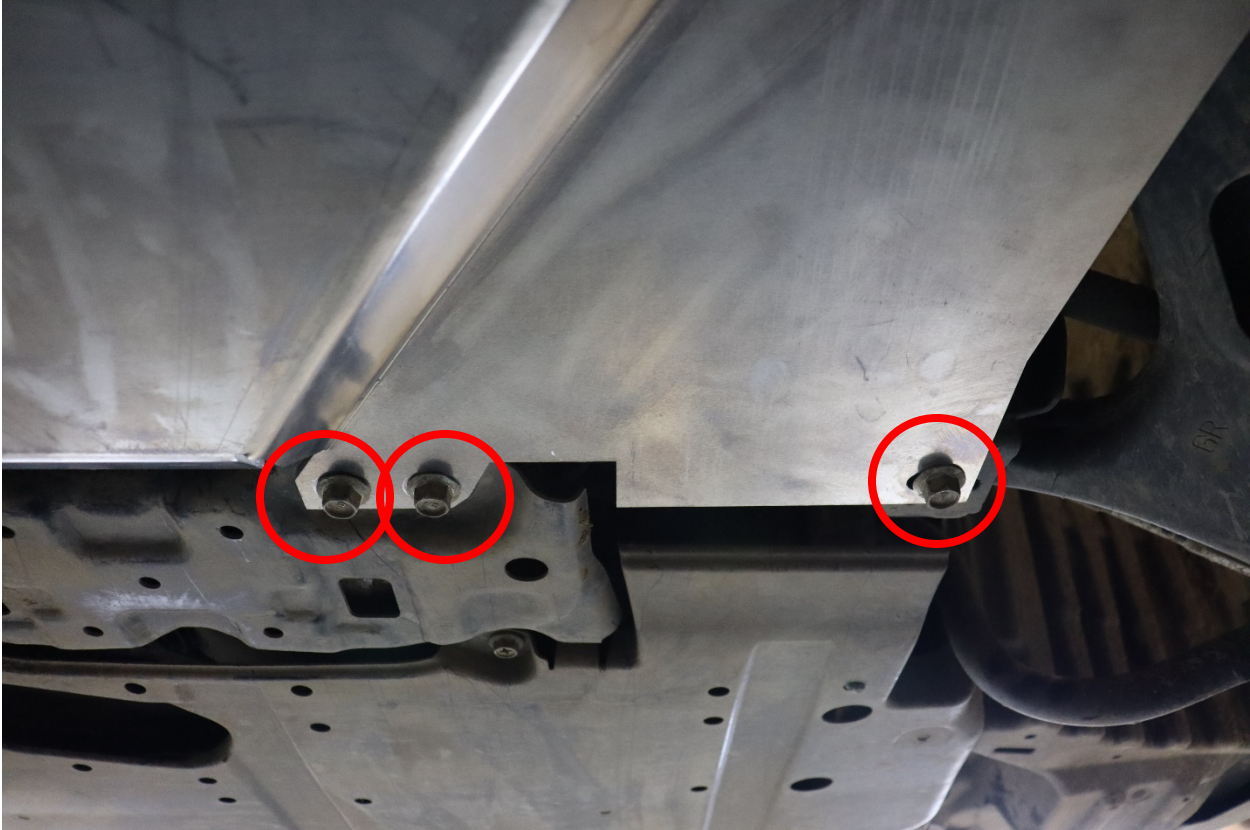


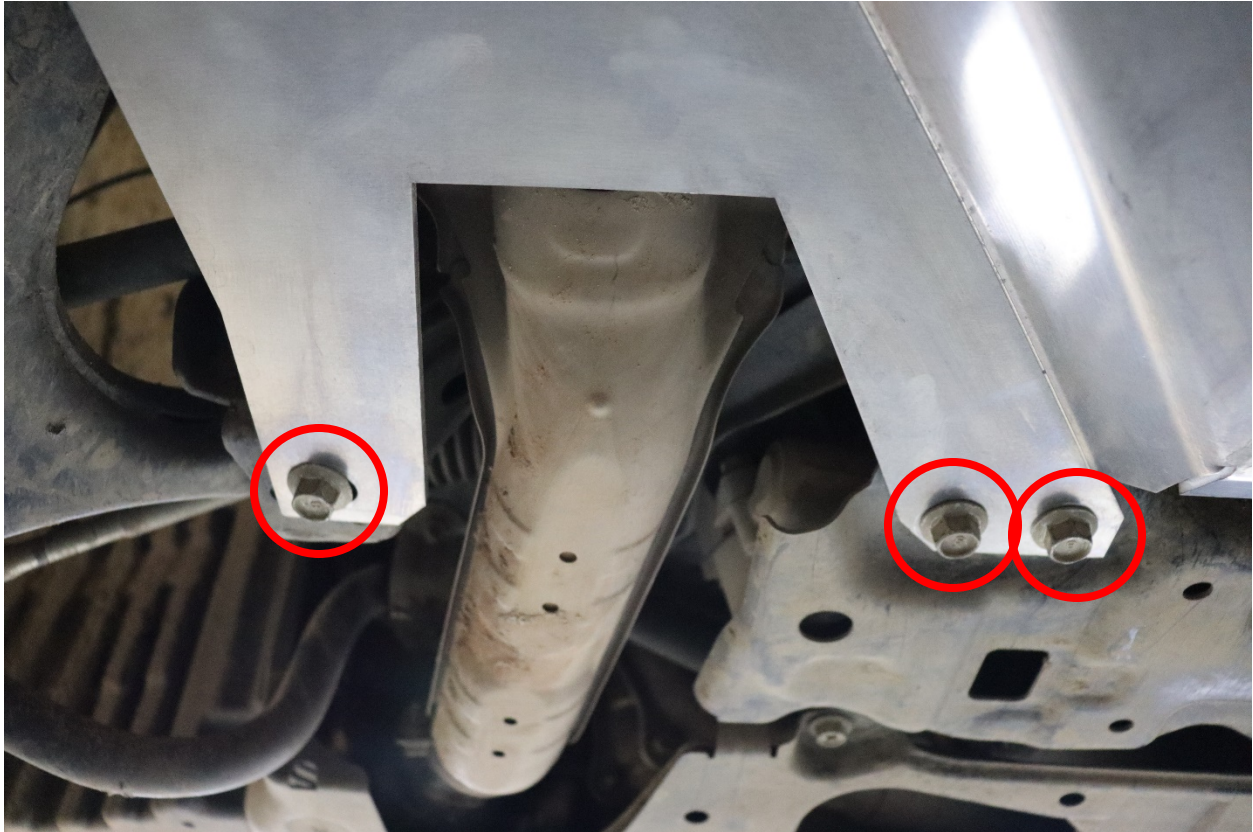




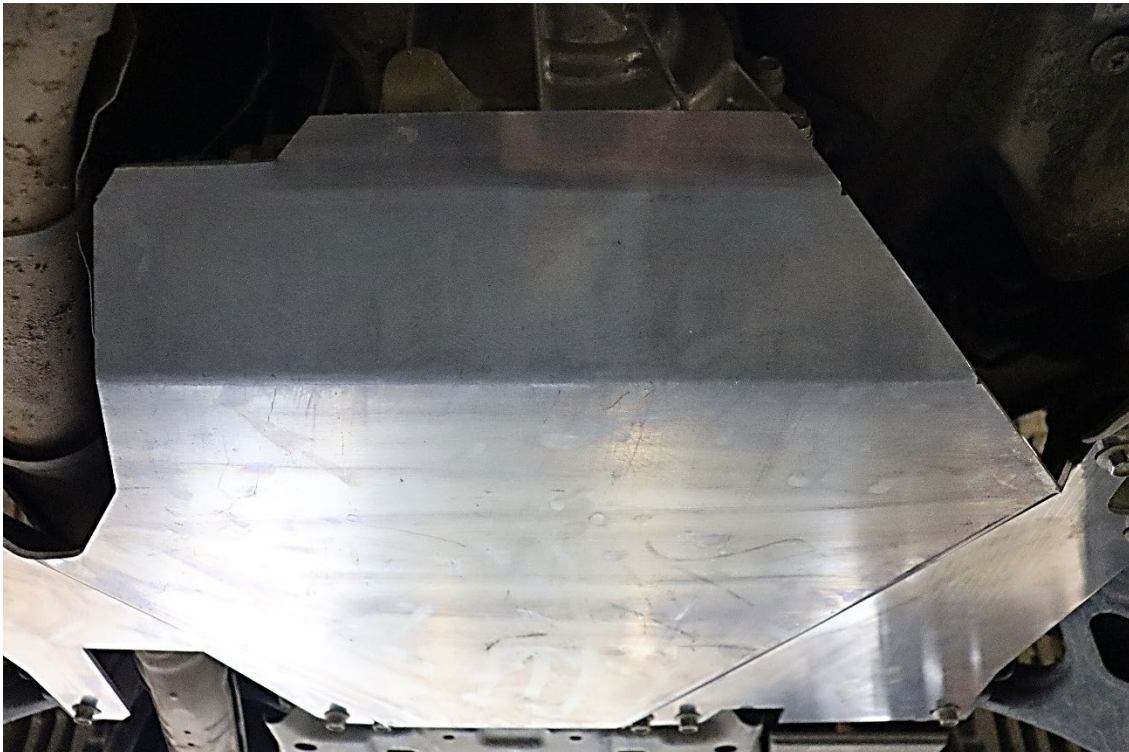
3. Lift the Crawford Transmission plate up into position and loosely thread the provided hardware into the OEM bolt positions that are left open after removing the support struts. This step will be easier with a friend to help hold the plate in place.







4. Once all the hardware is threaded in place, begin tightening the plate to the sub frame. Torque the bolts to **20 ft-lbs.** (14 MM Socket)





**Thank you for choosing Crawford
Performance!**

**Please feel free to contact us for any
questions or comments! We are here to
help. Celebrate your freshly finished install
by cracking a beer and pouring one out for
your chewed-up arms.**

**2319 E Locust Ct. Suite A
Ontario, California 91761
Technical@crawfordperformance.com
(855) 677-8243**

