



## B2230-1 Parts List

| Part Number | Quantity | Description                                 |
|-------------|----------|---|
| B2231       | 1        | CDR Series Rock Slider – 2019+ Forester     |
| B0232       | 2        | Bracket – 19+ Forester Door Support Bracket |
| B2035       | 8        | Bolt – AOS Mounting Bolt                    |
| N0592       | 8        | Nut – M6-1.0 DIN 6923 Zinc Flange Nut       |
| B2239       | 2        | Bumpstop – 1” buttonhead stop               |
| B0243       | 4        | Bolt – M10-1.25 x 75                        |



## Crawford Performance

### Hardware:



### Tools Needed:

Ratchet Driver    19 MM Socket    14 MM Socket    12 MM Socket    10 MM Socket    10 MM Wrench



### Recommended Tools

- Floor Jack
- Torque Wrench

## Installation Instructions

Crawford Performance recommends all steps and procedures described in these instructions be performed while the vehicle is properly supported on a two-post vehicle lift with safety jacks.

Otherwise, park vehicle on a clean flat surface and block the front wheels for safety. Engage the parking brake. The process shown is repeated for the driver side of the vehicle.

1. Remove the front passenger side subframe bolt shown below. (19 MM Socket, Ratchet Wrench)



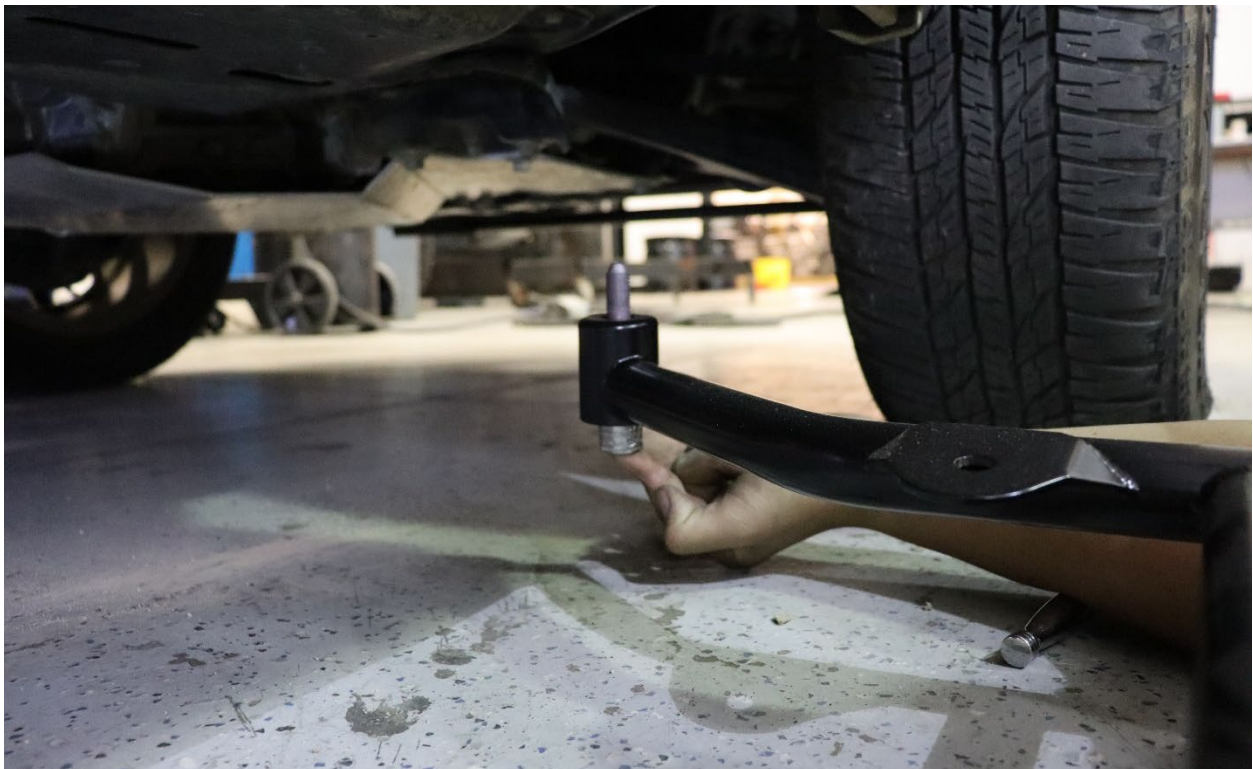
## Crawford Performance

2. Remove the two passenger side rear subframe bolts shown below. (14 MM Socket, Ratchet Wrench)





3. Loosely install the front end of the rock sliders (the front of the rock guard will have a cup fitting the bolt slides into) using the OEM 19 MM bolt removed in step one. (19 MM Socket, Ratchet Wrench)





4. Install the rubber sub frame support pads to the tabs indicated below. (9/16" socket)



Crawford Performance



## Crawford Performance

5. Fasten the rear rock guard mount using the provided 14 MM Bolts to the sub frame threads seen in step two. Thread them in by hand before torquing them down. (14 MM Socket, Ratchet Wrench)





## Crawford Performance



6. Tighten down the front rock guard mount from step 3. (19 MM Socket, Ratchet Wrench)



## Crawford Performance

7. Open the doors to the vehicle. Passenger side shown. Your rock guards should be oriented so that the full Crawford Performance Logo is under the front door, while the shortened logo is under the rear door. With the doors open, remove the lowest 12 MM door hinge bolt shown below. (12 MM Socket)



## Crawford Performance



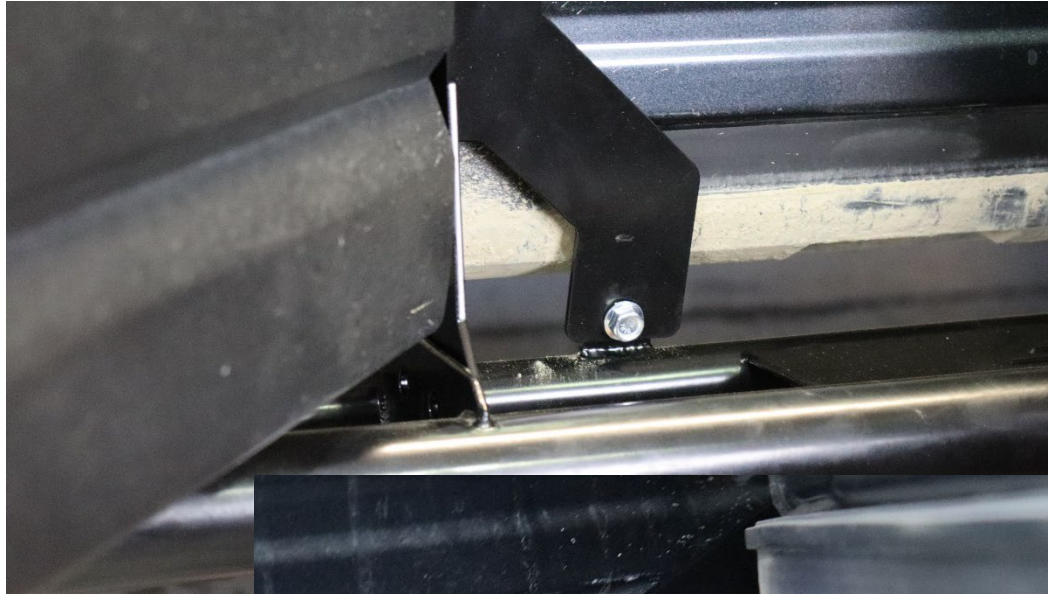
8. Insert the rock guard support bracket as shown.





9. Fasten the lower end of the bracket to the rock guards using the provided 10 MM hardware. There are 4 mounting points total to be secured. Fasten the outer tabs before the inner tabs as shown.

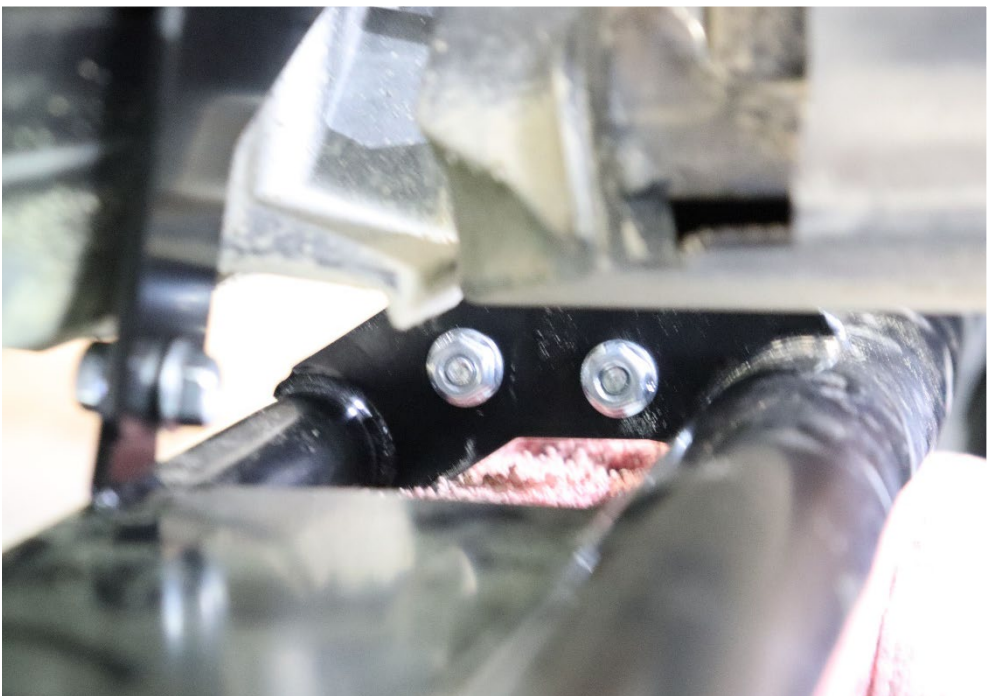
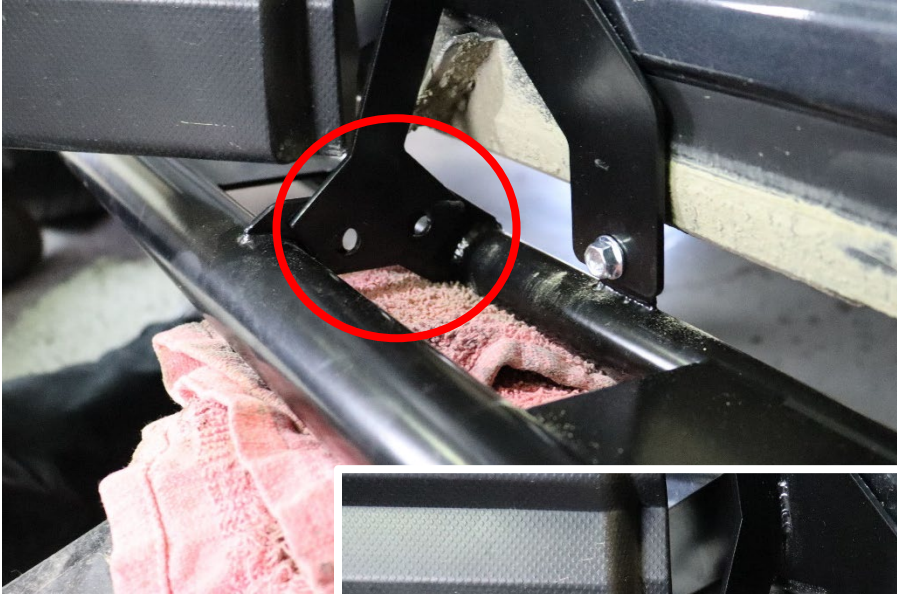




10. Use a floor jack and a rag or other cushion to lift the rock guards into position for the last two 10 MM bolts to be inserted into the center brace mounts. Once raised, fasten the bracket to the rock guards. (10 MM Socket, Ratchet Wrench, 10 MM Box Wrench)



Crawford Performance



## Crawford Performance

11. Using the floor jack, lift the center of the rock guards under the door frame bracket to align the bracket and the passenger rear door hinge mount. Once aligned, use the OEM 12 MM bolt removed in step 7 to fasten the top of the bracket to the door frame. (12 MM Socket, Ratchet Wrench)



## Crawford Performance

12. Repeat this process on the driver side of the vehicle and double check all bolts are torqued to spec.
13. Enjoy your new Rock Sliders!



**Thank you for choosing Crawford Performance!**

**Please feel free to contact us for any questions or comments!  
We are here to help. We understand this is a difficult install and  
we commend you for your efforts. Celebrate by cracking a beer  
and pouring one out for your chewed-up arms.**

**2319 E Locust Ct. Suite A  
Ontario, California 91761**

**[Technical@crawfordperformance.com](mailto:Technical@crawfordperformance.com)**

**(855) 677-8243**





