

Jetpik
Model JP-50/200
Power Floss System

1. Important safeguards.	1
2. Appliance description.	5
3. Getting started.	7
4. Care of your Jetpik unit.	12
5. Troubleshooting.	13
6. Limited warranty.	15

1. Important safeguards.

Read all instructions before use

Dangers

To reduce the risk of electrocution:

- Do not immerse the charger in water or other liquids.
- Do not place or store the appliance where it can fall or be pulled into a bath, washbasin or sink.
- Check the main body of the charger and the cable regularly and if damaged, please replace.

Warning

To avoid the risks of electric shock, personal injury or fire:

- Do not plug the charger into a voltage that is different from the voltage specified on the device or charger.
- The adapter for Jetpik is designed to work within a range of 100 to 240 AC Volts.

- The charger for Jetpik is designed to be linked to standard USB output which is 4.75 to 5.25 V DC. Please don't plug the charger to any other voltage that may cause damage to the equipment.
- Do not use this appliance if it has been dropped into water or other liquid and is not working properly. Contact Jetpik or your local dealer, which can be found at www.jetpik.com.
- Do not direct water and floss to any area other than your teeth and gums. This device delivers a pressurized water stream and moving floss that can cause serious damage on other tissues or body parts.
- Use this appliance only as shown in these instructions or as recommended by your dental professionals.
- Only use supplies and accessories that are manufactured or recommended by Jetpik.
- To irrigate, use only water or other solutions recommended by your dental professionals.
- Do not drop or insert any foreign object into any opening on the appliance.

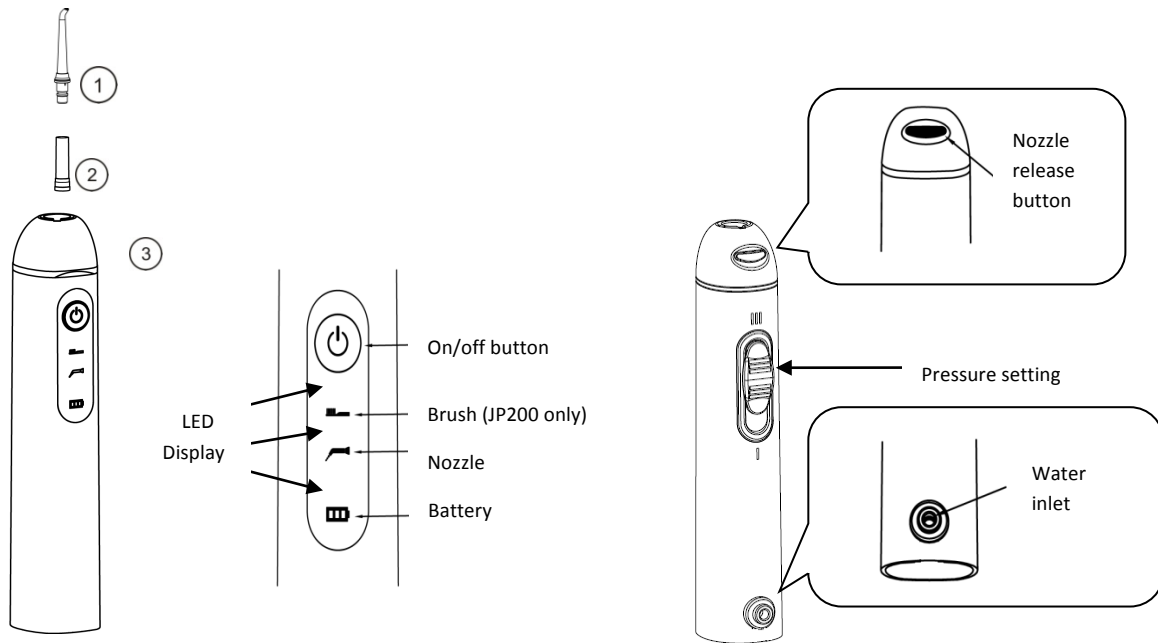
- Do not use the adapter outdoors and never force the plug into a mains socket. If the plug does not easily fit into the socket, stop, don't use it and try an alternative socket or replace with a new adapter.
- This appliance contains no user-serviceable parts. Contact Jetpik or your local dealer for service if your Jetpik no longer works properly and needs repair.
- Use this appliance only for its intended use as described in this document or as recommended by your dental professionals.
- Jetpik is not intended for use by persons (including children) with reduced physical, sensory, or mental capabilities. Children should always be supervised and given instruction concerning the use of this appliance by a person responsible for their safety.
- Jetpik is a personal care device and is not intended for use on multiple patients or in a dental practice or institution.
- Children should always be supervised to ensure that they do not play with the appliance.
- Avoid applying excessive pressure to the nozzle. Do not block the water stream by pressing the nozzle to the gum while cleaning as this may cause damage to the motor.

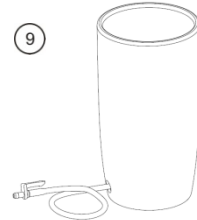
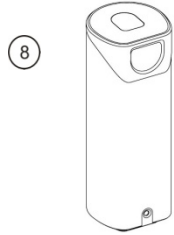
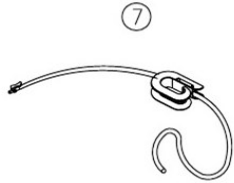
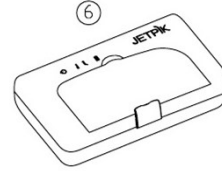
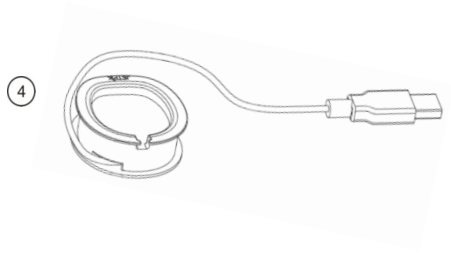
Medical Warning

- Consult your dental professional before using this appliance if you have had oral or gum surgery in the preceding two months.
- Contact your dental professional if excessive gum bleeding occurs after using this appliance or if bleeding continues to occur after one weeks use.
- Discontinue using Jetpik and contact a physician/dentist if discomfort or pain is experienced.
- Consult your physician if you have any other medical concerns.

Save These Instructions

2. Appliance Description.



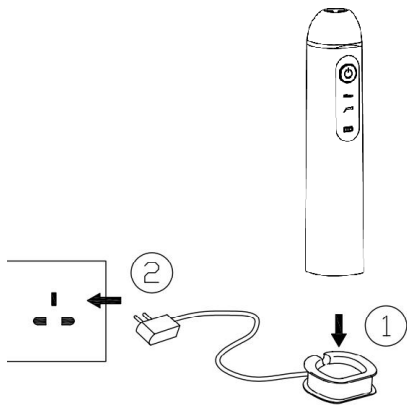


- ① Nozzle ② Floss capsule ③ Handle ④ Charger ⑤ AC Adapter ⑥ Travel case ⑦ Water supply tube ⑧ UV Sanitizer
⑨ Cup

3. Getting Started.

Initial Battery Charging

Initial charge of Jetpik should be 24 hours. To do so, connect the charger to your mains socket and place the handle onto the cradle. A steady LED (or flashing LED for the Rev0 version) will indicate that the power is on and the unit is charging. Usually it will take 8 hours for the battery to be fully charged after the first use.



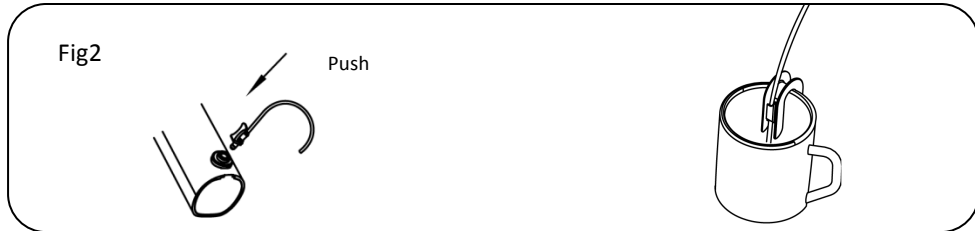
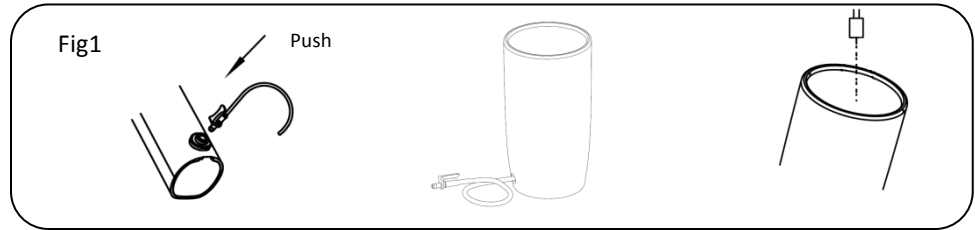
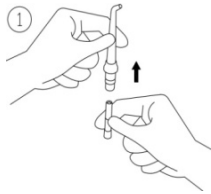
Indication of battery status (Rev 1 or higher only)

Every time the unit is turned on and turned off, the battery LED will flash. Flashing 4 times means the battery is full, 3 times meaning the battery is around 80%, 2 times meaning around 50%, and one time meaning less than 20%. It is recommended that you charge your unit when it flashes only once.

Preparing Jetpik for Use

Before using:

- ① Place one floss capsule into the nozzle (Note that Jetpik will not work properly without the floss capsule in position).
- ② Attach the nozzle to the handle.
 - When using the Jetpik cup, insert the quick connector of the extendable hose on the lower base of the cup to the water inlet on the Jetpik handle and pull the tube to a comfortable length and fill the cup with water. (See below Figure 1)
 - When using in Travel Mode – Insert the quick connector on one side of the water supply tube to the Jetpik handle water inlet.
 - Use the spool of the water supply tube to clip the other end of the tube into a cup or bottle of water. Note – take care to ensure that the tube remains fully immersed beneath the surface of the water. (see below Figure 2)



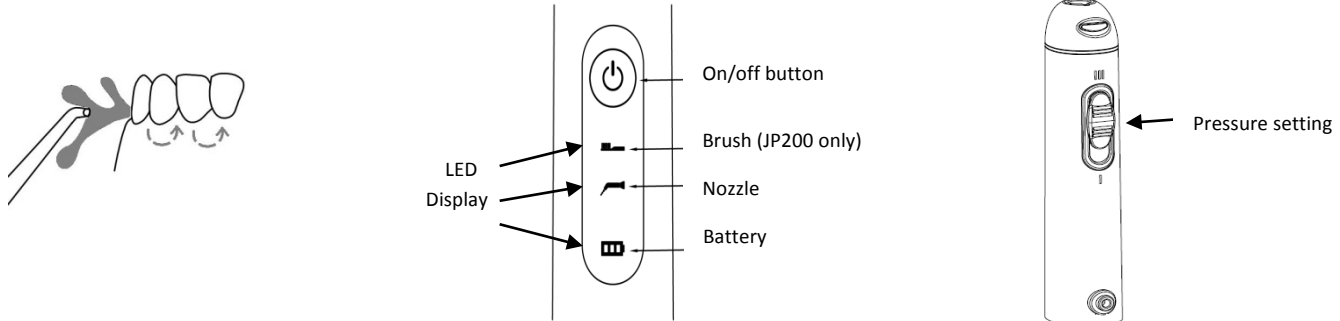
Prime the floss:

Press and move the pressure adjust button to the top III position, aim the nozzle into the sink and press the On/Off button. Wait a few seconds until the water projects from the nozzle and the string floss begins pulsating from the capsule. Once done, turn off the unit by pressing the On/Off button again.

Using.

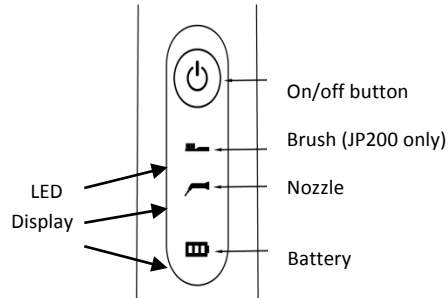
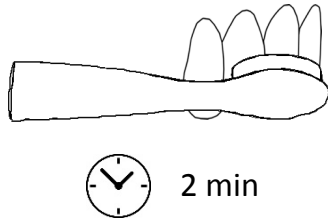
If you have never used a water irrigator before, it is recommended to start at a lower setting by adjusting the pressure adjust button to the I position. You can gradually increase the pressure provided you don't experience any gum bleeding or discomfort.

To begin, lean over the sink, place the nozzle into your mouth, position the tip towards your teeth and press the On/Off button. Direct the jet stream onto your gum-line as illustrated and move from one tooth to another. Slightly close your lips to avoid splashing but allow water to flow freely from your mouth to the sink. For best results, pause briefly between teeth to let the floss fully clean the area. Continue until all areas around and between the teeth have been reached. It is recommended that you replace the floss capsule each week to get the best cleaning results under the gum-line, behind any braces and between the teeth.



Using the Power brush function (JP200 series)

1. Clip the power toothbrush head to your Jetpik handle as shown. If you have the jet nozzle attached, you will have to replace it with the brush head.
2. Apply a comfortable amount of toothpaste onto the brush and make contact with your teeth surface. Press the On/Off button to start the power brush.
3. Pressing the On/Off button once will give you the highest strength in toothbrush power. Pressing the On/Off button a second time will give you a lower strength interval. Please note, the older version (Rev0) will have only one strength interval when pressing the On/Off button.
4. Pressing the On/Off button a 3rd time will turn the power brush off.
5. At the end of a 2 minutes session (Rev1 or higher), the brush will give 3 pauses to notify you regarding the recommended time.



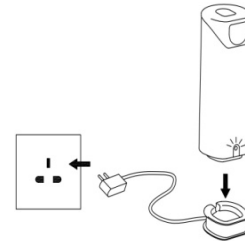
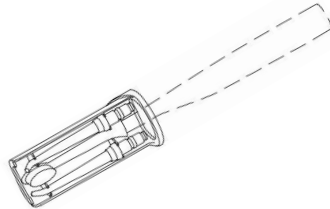
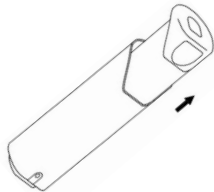
4. Taking care of your Jetpik unit.

1. Always empty the cup and keep your Jetpik dry if it is not going to be used for a length of time.
2. Use tap or pure water to rinse out your unit if you have used it to deliver mouthwash or antibacterial solutions.
3. Turn on the unit for few seconds to let the remaining water empty before you put the unit into the travel case.

Using the UV Sanitizer (OPTIONAL)

Some models are equipped with the UV sanitizer designed to clean your nozzles and tooth brush heads.

1. Pull out the drawer of the UV sanitizer and clip your nozzle (max 2) into the drawer. You can also place your manual toothbrush or electric toothbrush head into the drawer for UV cleaning.
2. Push back the drawer to the closed position (the sanitizer will not work if the drawer is not fully closed). Place the sanitizer into the charging cradle and make sure the charger is connected to a power socket of appropriate voltage. The green LED on the sanitizer will light up along with a blue light at the top window of the sanitizer. The sanitizer cycle will run for 10 minutes and before shutting off automatically.



Disposal

When the appliance reaches the end of its life cycle, please remove the rechargeable battery from the handle prior to disposal by puncturing and opening the plastic cover. Once opened, cut the wires attaching the battery to the handle and recycle or dispose of the battery based on your local regulations. The rest of the unit can be discarded appropriately. N.B. Batteries must not be included with normal household waste and should be taken to proper collection points to comply with Directives 2002/96/EC and 2006/66/EC. Penalties may be applicable for incorrect disposal of this appliance.

5. Troubleshooting Guide

Problem	Cause	Corrective action
Jetpik is turned on but no water is coming out of the nozzle.	<ol style="list-style-type: none">1. There is no floss capsule in nozzle or the capsule is too old to function.2. The water supply tube is clogged.3. The nozzle was not fully engaged.	<ol style="list-style-type: none">1. Insert a new capsule into the nozzle and prime it.2. Flush out the tube or replace it.3. Release and re-install the nozzle.

Jetpik doesn't start.	Battery is not charged.	Be sure the power charger is functioning and the battery LED is on when placed in the cradle. Fully charge for over 8 hours and try again.
Power toothbrush is not running when brush tip is inserted. Instead, the handle motor is running.	<ol style="list-style-type: none"> 1. Brush tip is not in position. 2. Contact points between the brush tip and the handle are not clean. 3. Brush motor is dead. 	Pull out the brush tip and use a swab or Jetpik cleaning tool (included for Rev1 versions or higher) to clean the contact points. Once cleaned, reinsert the brush tip into the handle or replace the brush tip.
Either the Green LED screen or the blue light is not visible from the UV sanitizer window	<ol style="list-style-type: none"> 1. Not connected to power source. 2. The drawer is not fully inserted. 3. Charger is defective. 4. UV sanitizer is defective. 	<p>Check the USB adapter and cable to make sure it is fully inserted into the mains socket.</p> <p>Reinsert the drawer into the sanitizer.</p> <p>Replace the UV sanitizer or charger.</p>

6. Limited Two-Year Warranty

Jetpik is warranted to the original consumer to be free from defects in materials and workmanship for 2 years from the date of purchase. Consumers will be required to submit the original purchase receipt and the entire appliance to support a warranty claim. Jetpik will replace, at its discretion, any part of the appliance which is deemed to be defective, provided the product has not been abused, misused, altered or damaged after purchase, was used according to the provided instructions, and was used only with accessories or supplies approved by Jetpik. Correct use and installation is the responsibility of the consumer and is not covered by the warranty. This limited warranty excludes accessories and supplies such as, but not limited to, nozzles, floss capsules and brush heads.

Limitation of Remedies

In no circumstance shall Jetpik or any of its affiliated or subsidiary companies be liable for any special, incidental or consequential damages based upon breach of warranty, breach of contract, negligence, tort, or any other legal remedy. Such damages include, but are not limited to, loss of savings or revenue, loss of profit, loss of use, the claims of third parties including, but not limited to, dentists and dental hygienists, and the cost of any substitute equipment or services.

Jetpik®

www.jetpik.com ; email contact: sales@jetpik.com

Jetpik® is a trademark of Nucreatronics Electronic Technology (Shanghai) Co.,LTD. registered in USA, Europe, Brazil, China and other countries.

Jetpik USA:

Add: 16453 Old Valley Blvd. City of Industry, CA 91744, USA.

Tel: +1 626-330-0808

Jetpik China:

Add: 176 Jin Dian Lu, Building 4 Room 305-2, Shanghai, China

Tel: +86 21 50116663