



BRSInnovations



MONOS Portable Direct Radiography Imaging System 14" x 17" DR Panel

The **MÓNOS** system is a versatile, large format, high resolution imaging system that provides users an ideal system for multiple types of operations. The **MÓNOS** panel includes built in wireless with a 50 m range and an internal battery when a lightweight, extremely portable system is required. Adding the **ASÝRMATOS II interface** allows users extended battery life and increased wireless range (up to 400 m line of sight). Just like our other DR systems, the **MÓNOS** panel has an 8 mm bottom border, is 18 mm thin, and is rated up to 330 kV.

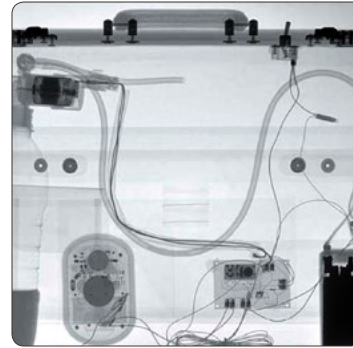


FEATURES

- ▶ Fully Wireless Panel
- ▶ 8 mm Bottom Border
- ▶ High Resolution and Sensitivity, 127µm Pixel Size, 3.9 lp/mm
- ▶ IP53 Rating

The MONOS system includes two batteries for a total of up to four hours of operation on a single battery charge (additional batteries available). Batteries are easily changed in the field and are charged with the supplied dual battery charger.

With a wireless range of 50 m (line of sight) using only the PC or tablet internal wireless card and a USB dongle for X-ray firing, users can work safely in most any environment. All X-Ray firing and image acquisition functions are controlled uprange using the proprietary Logos Imaging Application, which can be installed on either a laptop or most Windows based tablets.



SPECIFICATIONS

- ▶ **Technology:** Amorphous Silicon with TFT
- ▶ **Scintillator:** Gadox
- ▶ **Pixel Area:** 42.3 x 35.8 cm, 16.7" x 14.1"
- ▶ **Pixel Matrix:** 3328 x 2816 pixels
- ▶ **Pixel Size:** 127 µm
- ▶ **Limiting Resolution:** 3.9 lp/mm
- ▶ **AD Conversion:** 16 bits
- ▶ **Communications Interface:** Wireless 2.4 GHz (5 GHz Optional); & Wired LAN
- ▶ **Communications Range:** Wireless 50 m or up to 400 m with interface* (using 2.4 GHz); Wired option 50 m to 200 m
- ▶ **Image Transfer:** Wired - 5 seconds; Wireless - 9 seconds**
- ▶ **X-ray Energy Range:** 40 - 330 kV
- ▶ **Weight:** 5.3 kg (11.7 lbs)
- ▶ **Dimensions (Panel):** 47.5 x 40.0 x 1.8 cm (18.7" x 15.7" x 0.7")
- ▶ **Power:** 100-240 VAC (50-60 Hz), 2A using included power supply; 14.4 V, 93 Wh, Li-Ion hot-swappable battery pack
- ▶ **Operating Temperature:** Wired: -4 to 122 °F (-20 to 50 °C); Wireless: 32 to 104 °F (0 to 40 °C)
- ▶ **Storage Temperature:** -20 to 50 °C (-4 to 122 °F)
- ▶ **PC Specs (Minimum):** Core i7 Processor, 4 GB RAM, 500 GB hard disk, 14" 1600 x 900 display, Windows 7 Professional