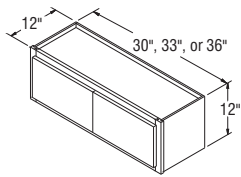
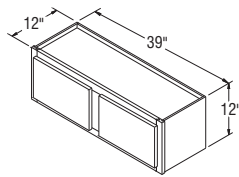


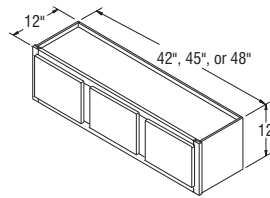
Wall Cabinets, 12" High, 12" Deep



W3012B
W3312B
W3612B



W3912



W4212
W4512
W4812

The following note applies to all Wall cabinets within this book.

- ▶ Wall cabinets may be flipped for a left or right hinge preference with the exception of Briarcliff II Arch.

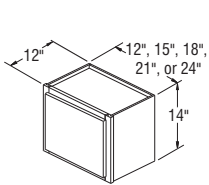
NOTES ✓

- ▶ Shelves not available with cabinets less than 24" in height.
- ▶ Center door on W4212, W4512, and W4812 will be hinged on the left.

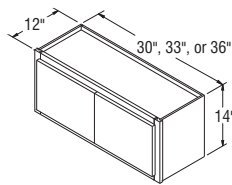
DESIGN SOLUTIONS

- ▶ Apply an End Panel Skin to create a flush end on the side of a Wall cabinet if installed at the end of a run for ease of Moulding installation.

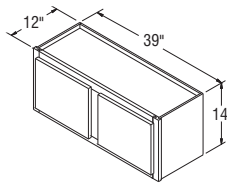
Wall Cabinets, 14" High, 12" Deep



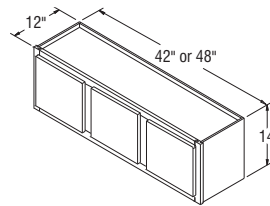
W1214*
W1514*
W1814*
W2114*
W2414*



W3014B
W3314B
W3614B



W3914



W4214
W4814

NOTES ✓

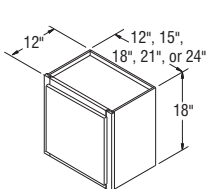
- ▶ Shelves not available with cabinets less than 24" in height.
- ▶ Center door on W4214 and W4814 will be hinged on the left.

DESIGN SOLUTIONS

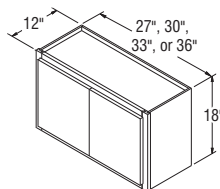
- ▶ Apply an End Panel Skin to create a flush end on the side of a Wall cabinet if installed at the end of a run for ease of Moulding installation.

*Specify L or R on all single door Arch styles.

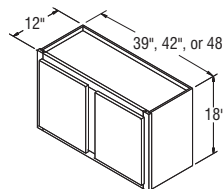
Wall Cabinets, 18" High, 12" Deep



W1218*
W1518*
W1818*
W2118*
W2418*



W2718B
W3018B
W3318B
W3618B



W3918
W4218
W4818

NOTES ✓

- ▶ Shelves not available with cabinets less than 24" in height.

DESIGN SOLUTIONS

- ▶ Apply an End Panel Skin to create a flush end on the side of a Wall cabinet if installed at the end of a run for ease of Moulding installation.

*Specify L or R on all single door Arch styles.

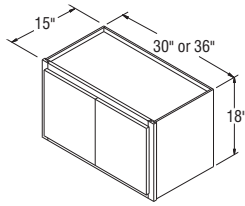
Wall Cabinets, 18" High, 15" Deep

NOTES ✓

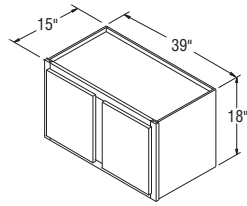
- ▶ Shelves not available with cabinets less than 24" in height.
- ▶ When varying heights, make sure to also vary depths to allow moulding to lie against adjacent side of cabinet.

DESIGN SOLUTIONS

- ▶ Apply an End Panel Skin to create a flush end on the side of a Wall cabinet if installed at the end of a run for ease of Moulding installation.



W301815B
W361815B



W391815

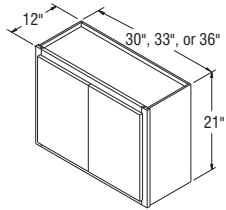
Wall Cabinets, 21" High, 12" Deep

NOTES ✓

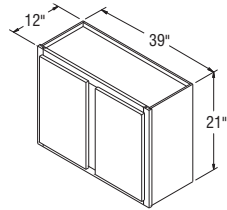
- ▶ Shelves not available with cabinets less than 24" in height.

DESIGN SOLUTIONS

- ▶ Apply an End Panel Skin to create a flush end on the side of a Wall cabinet if installed at the end of a run for ease of Moulding installation.



W3021B
W3321B
W3621B



W3921

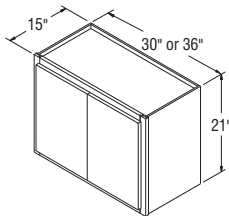
Wall Cabinets, 21" High, 15" Deep

NOTES ✓

- ▶ Shelves not available with cabinets less than 24" in height.
- ▶ When varying heights, make sure to also vary depths to allow moulding to lie against adjacent side of cabinet.

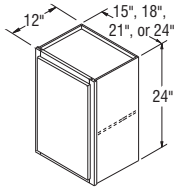
DESIGN SOLUTIONS

- ▶ Apply an End Panel Skin to create a flush end on the side of a Wall cabinet if installed at the end of a run for ease of Moulding installation.

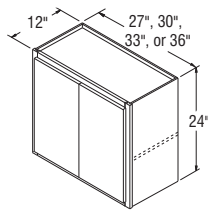


W302115B
W362115B

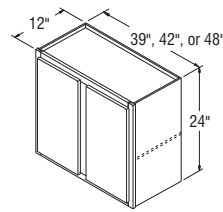
Wall Cabinets, 24" High, 12" Deep



W1524*
W1824*
W2124*
W2424*



W2724B
W3024B
W3324B
W3624B



W3924
W4224
W4824

*Specify L or R on all single door Arch styles.

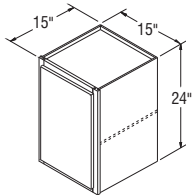
NOTES ✓

- ▶ Center shelf support clip included on Wall Double Door cabinets with center mullion.
- ▶ One adjustable shelf.

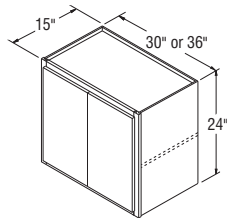
DESIGN SOLUTIONS

- ▶ Apply an End Panel Skin to create a flush end on the side of a Wall cabinet if installed at the end of a run for ease of Moulding installation.

Wall Cabinets, 24" High, 15" Deep



W152415*



W302415B
W362415B

*Specify L or R on all single door Arch styles.

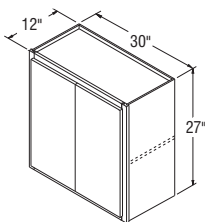
NOTES ✓

- ▶ Center shelf support clip included on Wall Double Door cabinets with center mullion.
- ▶ One adjustable shelf.
- ▶ When varying heights, make sure to also vary depths to allow moulding to lie against adjacent side of cabinet.

DESIGN SOLUTIONS

- ▶ Apply an End Panel Skin to create a flush end on the side of a Wall cabinet if installed at the end of a run for ease of Moulding installation.

Wall Cabinets, 27" High, 12" Deep



W3027B

NOTES ✓

- ▶ Center shelf support clip included on Wall Double Door cabinets with center mullion.
- ▶ One adjustable shelf.

DESIGN SOLUTIONS

- ▶ Apply an End Panel Skin to create a flush end on the side of a Wall cabinet if installed at the end of a run for ease of Moulding installation.

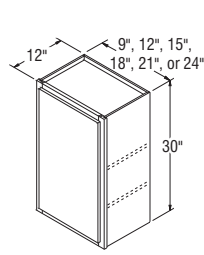
Wall Cabinets, 30" High, 12" Deep

NOTES ✓

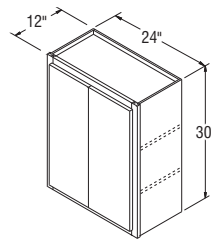
- ▶ Center shelf support clip included on Wall Double Door cabinets with center mullion
- ▶ Two adjustable shelves.
- ▶ All W0930 cabinets have square doors.

DESIGN SOLUTIONS

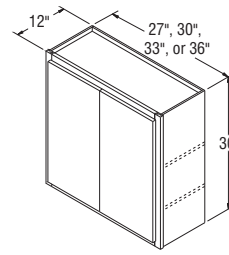
- ▶ Apply an End Panel Skin to create a flush end on the side of a Wall cabinet if installed at the end of a run for ease of Moulding installation.



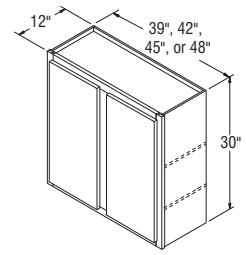
W0930
W1230*
W1530*
W1830*
W2130*
W2430*



W2430DD



W2730B
W3030B
W3330B
W3630B



W3930
W4230
W4530
W4830

*Specify L or R on all single door Arch styles.

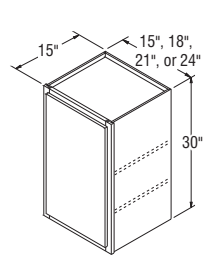
Wall Cabinets, 30" High, 15" Deep

NOTES ✓

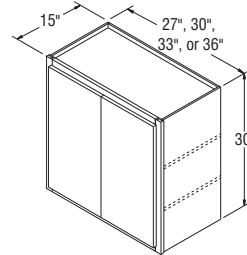
- ▶ Center shelf support clip included on Wall Double Door cabinets with center mullion.
- ▶ Two adjustable shelves.
- ▶ When varying heights, make sure to also vary depths to allow moulding to lie against adjacent side of cabinet.

DESIGN SOLUTIONS

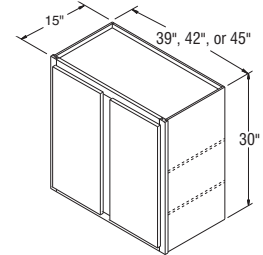
- ▶ Apply an End Panel Skin to create a flush end on the side of a Wall cabinet if installed at the end of a run for ease of Moulding installation.



W153015*
W183015*
W213015*
W243015*



W273015B
W303015B
W333015B
W363015B



W393015
W423015
W453015

*Specify L or R on all single door Arch styles.

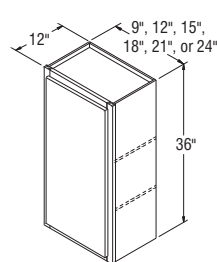
Wall Cabinets, 36" High, 12" Deep

NOTES ✓

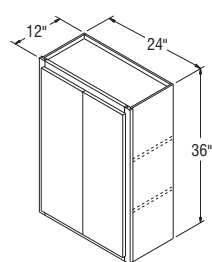
- ▶ Center shelf support clip included on Wall Double Door cabinets with center mullion.
- ▶ Two adjustable shelves.
- ▶ All W0936 cabinets have square doors.

DESIGN SOLUTIONS

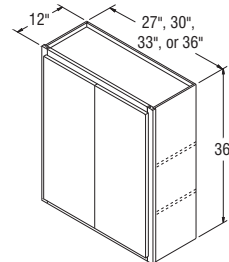
- ▶ Apply an End Panel Skin to create a flush end on the side of a Wall cabinet if installed at the end of a run for ease of Moulding installation.



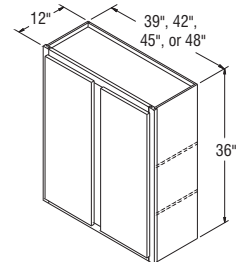
W0936
W1236*
W1536*
W1836*
W2136*
W2436*



W2436DD



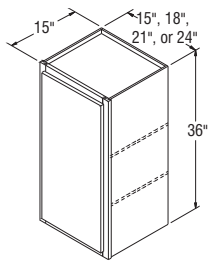
W2736B
W3036B
W3336B
W3636B



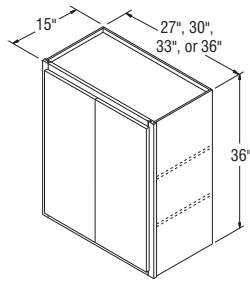
W3936
W4236
W4536
W4836

*Specify L or R on all single door Arch styles.

Wall Cabinets, 36" High, 15" Deep



W153615*
W183615*
W213615*
W243615*



W273615B
W303615B
W333615B
W363615B

*Specify L or R on all single door Arch styles.

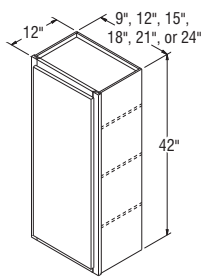
NOTES ✓

- ▶ Center shelf support clip included on Wall Double Door cabinets with center mullion.
- ▶ Two adjustable shelves.
- ▶ When varying heights, make sure to also vary depths to allow moulding to lie against adjacent side of cabinet.

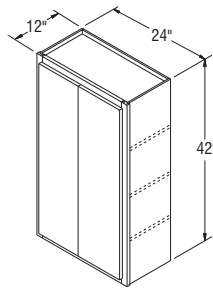
DESIGN SOLUTIONS

- ▶ Apply an End Panel Skin to create a flush end on the side of a Wall cabinet if installed at the end of a run for ease of Moulding installation.

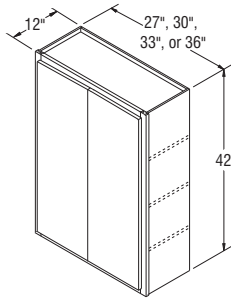
Wall Cabinets, 42" High, 12" Deep



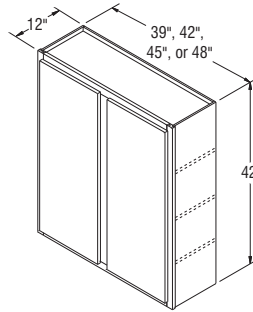
W0942
W1242*
W1542*
W1842*
W2142*
W2442*



W2442DD



W2742B
W3042B
W3342B
W3642B



W3942
W4242
W4542
W4842

*Specify L or R on all single door Arch styles.

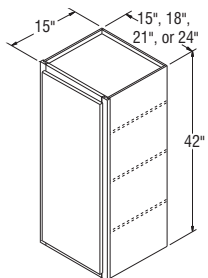
NOTES ✓

- ▶ Center shelf support clip included on Wall Double Door cabinets with center mullion.
- ▶ Three adjustable shelves.
- ▶ All W0942 cabinets have square doors.

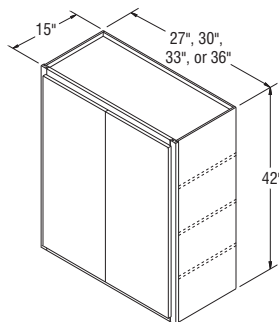
DESIGN SOLUTIONS

- ▶ Apply an End Panel Skin to create a flush end on the side of a Wall cabinet if installed at the end of a run for ease of Moulding installation.

Wall Cabinets, 42" High, 15" Deep



W154215*
W184215*
W214215*
W244215*



W274215B
W304215B
W334215B
W364215B

*Specify L or R on all single door Arch styles.

NOTES ✓

- ▶ Center shelf support clip included on Wall Double Door cabinets with center mullion.
- ▶ Three adjustable shelves.
- ▶ When varying heights, make sure to also vary depths to allow moulding to lie against adjacent side of cabinet.

DESIGN SOLUTIONS

- ▶ Apply an End Panel Skin to create a flush end on the side of a Wall cabinet if installed at the end of a run for ease of Moulding installation.

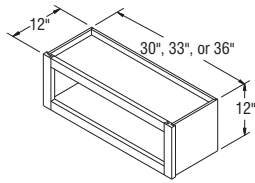
Wall Open Cabinets, 12" High, 12" Deep

NOTES ✓

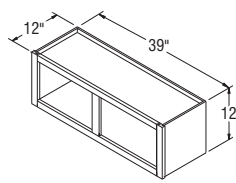
- ▶ Shelves not available in cabinets less than 24" in height.
- ▶ Cabinets include matching Aristex™ interior.
- ▶ Doors can be added in the field, if desired.

DESIGN SOLUTIONS

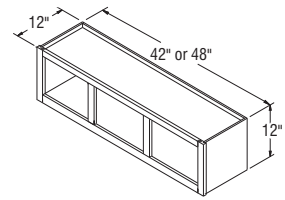
- ▶ Apply an End Panel Skin to create a flush end on the side of a Wall cabinet if installed at the end of a run for ease of Moulding installation.



WOL3012
WOL3312
WOL3612



WOL3912



WOL4212
WOL4812

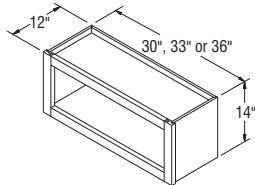
Wall Open Cabinets, 14" High, 12" Deep

NOTES ✓

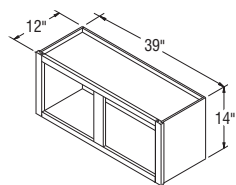
- ▶ Shelves not available in cabinets less than 24" in height.
- ▶ Cabinets include matching Aristex™ interior.
- ▶ Doors can be added in the field, if desired.

DESIGN SOLUTIONS

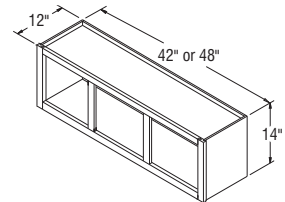
- ▶ Apply an End Panel Skin to create a flush end on the side of a Wall cabinet if installed at the end of a run for ease of Moulding installation.



WOL3014
WOL3314
WOL3614



WOL3914



WOL4214
WOL4814

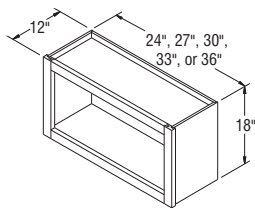
Wall Open Cabinets, 18" High, 12" Deep

NOTES ✓

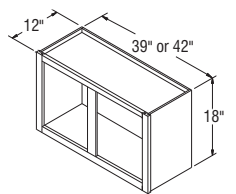
- ▶ Shelves not available in cabinets less than 24" in height.
- ▶ Cabinets include matching Aristex™ interior.
- ▶ Doors can be added in the field, if desired.

DESIGN SOLUTIONS

- ▶ Apply an End Panel Skin to create a flush end on the side of a Wall cabinet if installed at the end of a run for ease of Moulding installation.

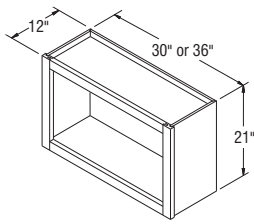


WOL2418
WOL2718
WOL3018
WOL3318
WOL3618



WOL3918
WOL4218

Wall Open Cabinets, 21" High, 12" Deep



WOL3021
WOL3621

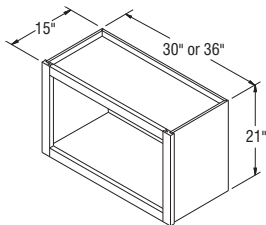
NOTES ✓

- ▶ Shelves not available in cabinets less than 24" in height.
- ▶ Cabinets include matching Aristex™ interior.
- ▶ Doors can be added in the field, if desired.

DESIGN SOLUTIONS

- ▶ Apply an End Panel Skin to create a flush end on the side of a Wall cabinet if installed at the end of a run for ease of Moulding installation.

Wall Open Cabinets, 21" High, 15" Deep



WOL302115
WOL362115

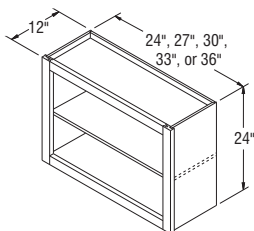
NOTES ✓

- ▶ Shelves not available in cabinets less than 24" in height.
- ▶ Cabinets include matching Aristex™ interior.
- ▶ Doors can be added in the field, if desired.
- ▶ When varying heights, make sure to also vary depths to allow moulding to lie against adjacent side of cabinet.

DESIGN SOLUTIONS

- ▶ Apply an End Panel Skin to create a flush end on the side of a Wall cabinet if installed at the end of a run for ease of Moulding installation.

Wall Open Cabinets, 24" High, 12" Deep



WOL2424
WOL2724
WOL3024
WOL3324
WOL3624

NOTES ✓

- ▶ One adjustable 3/4" thick matching Aristex™ shelf.
- ▶ Cabinets include matching Aristex™ interior.
- ▶ Doors can be added in the field, if desired.

DESIGN SOLUTIONS

- ▶ Apply an End Panel Skin to create a flush end on the side of a Wall cabinet if installed at the end of a run for ease of Moulding installation.

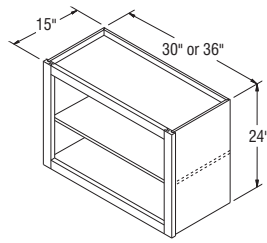
NOTES ✓

- ▶ One adjustable 3/4" thick matching Aristex™ shelf.
- ▶ Cabinets include matching Aristex™ interior.
- ▶ Doors can be added in the field, if desired.
- ▶ When varying heights, make sure to also vary depths to allow moulding to lie against adjacent side of cabinet.

DESIGN SOLUTIONS

- ▶ Apply an End Panel Skin to create a flush end on the side of a Wall cabinet if installed at the end of a run for ease of Moulding installation.

Wall Open Cabinets, 24" High, 15" Deep



WOL302415
WOL362415

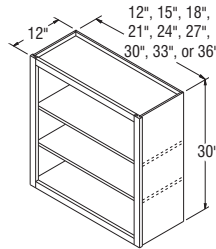
NOTES ✓

- ▶ Two adjustable 3/4" thick matching Aristex® shelves.
- ▶ Cabinets include matching Aristex™ interior.
- ▶ Doors can be added in the field, if desired.

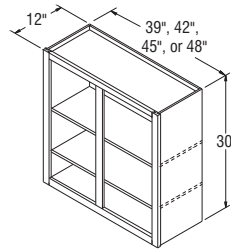
DESIGN SOLUTIONS

- ▶ Apply an End Panel Skin to create a flush end on the side of a Wall cabinet if installed at the end of a run for ease of Moulding installation.

Wall Open Cabinets, 30" High, 12" Deep



WOL1230
WOL1530
WOL1830
WOL2130
WOL2430
WOL2730
WOL3030
WOL3330
WOL3630



WOL3930
WOL4230
WOL4530
WOL4830

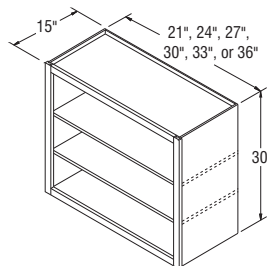
NOTES ✓

- ▶ Two adjustable 3/4" thick matching Aristex® shelves.
- ▶ Cabinets include matching Aristex™ interior.
- ▶ Doors can be added in the field, if desired.
- ▶ When varying heights, make sure to also vary depths to allow moulding to lie against adjacent side of cabinet.

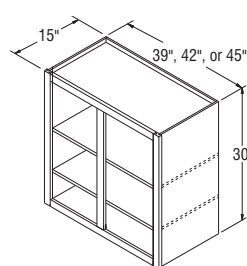
DESIGN SOLUTIONS

- ▶ Apply an End Panel Skin to create a flush end on the side of a Wall cabinet if installed at the end of a run for ease of Moulding installation.

Wall Open Cabinets, 30" High, 15" Deep

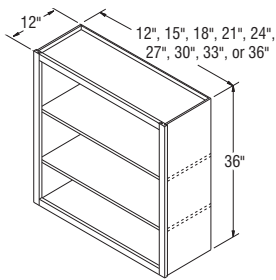


WOL213015
WOL243015
WOL273015
WOL303015
WOL333015
WOL363015



WOL393015
WOL423015
WOL453015

Wall Open Cabinets, 36" High, 12" Deep



WOL1236 **WOL2736**
WOL1536 **WOL3036**
WOL1836 **WOL3336**
WOL2136 **WOL3636**
WOL2436

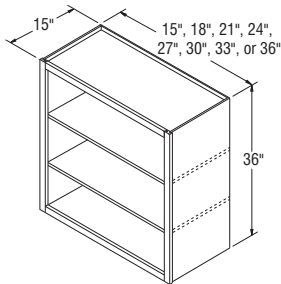
NOTES ✓

- ▶ Two adjustable $\frac{3}{4}$ " thick matching Aristex™ shelves.
- ▶ Cabinets include matching Aristex™ interior.
- ▶ Doors can be added in the field, if desired.

DESIGN SOLUTIONS

- ▶ Apply an End Panel Skin to create a flush end on the side of a Wall cabinet if installed at the end of a run for ease of Moulding installation.

Wall Open Cabinets, 36" High, 15" Deep



WOL153615
WOL183615
WOL213615
WOL243615
WOL273615
WOL303615
WOL333615
WOL363615

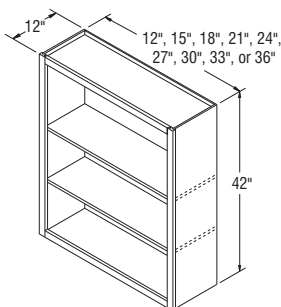
NOTES ✓

- ▶ Two adjustable $\frac{3}{4}$ " thick matching Aristex™ shelves.
- ▶ Cabinets include matching Aristex™ interior.
- ▶ Doors can be added in the field, if desired.
- ▶ When varying heights, make sure to also vary depths to allow moulding to lie against adjacent side of cabinet.

DESIGN SOLUTIONS

- ▶ Apply an End Panel Skin to create a flush end on the side of a Wall cabinet if installed at the end of a run for ease of Moulding installation.

Wall Open Cabinets, 42" High, 12" Deep



WOL1242 **WOL2742**
WOL1542 **WOL3042**
WOL1842 **WOL3342**
WOL2142 **WOL3642**
WOL2442

NOTES ✓

- ▶ Two adjustable $\frac{3}{4}$ " thick matching Aristex™ shelves.
- ▶ Cabinets include matching Aristex™ interior.
- ▶ Doors can be added in the field, if desired.

DESIGN SOLUTIONS

- ▶ Apply an End Panel Skin to create a flush end on the side of a Wall cabinet if installed at the end of a run for ease of Moulding installation.

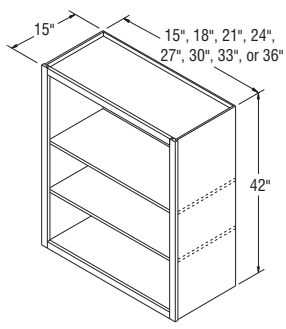
Wall Open Cabinets, 42" High, 15" Deep

NOTES ✓

- ▶ Two adjustable ¾" thick matching Aristex™ shelves.
- ▶ Cabinets include matching Aristex™ shelves.
- ▶ Doors can be added in the field, if desired.
- ▶ When varying heights, make sure to also vary depths to allow moulding to lie against adjacent side of cabinet.

DESIGN SOLUTIONS

- ▶ Apply an End Panel Skin to create a flush end on the side of a Wall cabinet if installed at the end of a run for ease of Moulding installation.



- WOL154215**
- WOL184215**
- WOL214215**
- WOL244215**
- WOL274215**
- WOL304215**
- WOL334215**
- WOL364215**

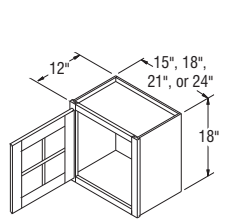
Wall Cabinets with Mullion Doors, 18" High, 12" Deep

NOTES ✓

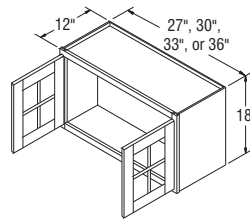
- ▶ Shelves not available in cabinets less than 24" in height.
- ▶ Cabinets include installed, clear tempered glass, and matching Aristex™ interior.
- ▶ See page 28 for Standard and Shaker Mullion Door style availability and grid configurations.
- ▶ Mullion Door cabinets are not available in Teagan or VanWyke.

DESIGN SOLUTIONS

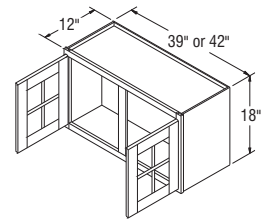
- ▶ Apply an End Panel Skin to create a flush end on the side of a Wall cabinet if installed at the end of a run for ease of Moulding installation.
- ▶ For complementary Wall Mullion Door cabinets in Teagan, order as Winstead Maple, as Teagan features a slab door design.



- WMD1518***
- WMD1818***
- WMD2118***
- WMD2418***



- WMD2718B**
- WMD3018B**
- WMD3318B**
- WMD3618B**



- WMD3918**
- WMD4218**

*Specify L or R on all single door Arch styles.

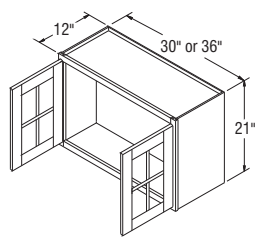
Wall Cabinets with Mullion Doors, 21" High, 12" Deep

NOTES ✓

- ▶ Shelves not available in cabinets less than 24" in height.
- ▶ Cabinets include installed, clear tempered glass, and matching Aristex™ interior.
- ▶ See page 28 for Standard and Shaker Mullion Door style availability and grid configurations.
- ▶ Mullion Door cabinets are not available in Teagan or VanWyke.

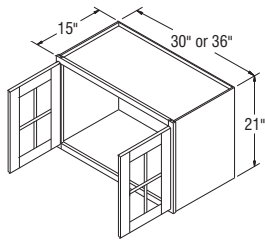
DESIGN SOLUTIONS

- ▶ Apply an End Panel Skin to create a flush end on the side of a Wall cabinet if installed at the end of a run for ease of Moulding installation.
- ▶ For complementary Wall Mullion Door cabinets in Teagan, order as Winstead Maple, as Teagan features a slab door design.



- WMD3021B**
- WMD3621B**

Wall Cabinets with Mullion Doors, 21" High, 15" Deep



WMD302115B
WMD362115B

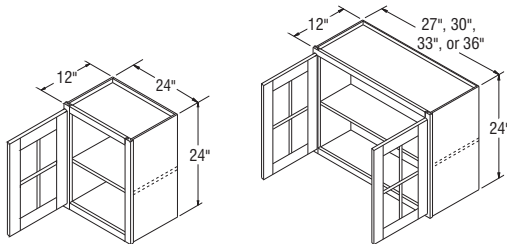
NOTES ✓

- ▶ Shelves not available in cabinets less than 24" in height.
- ▶ Cabinets include installed, clear tempered glass, and matching Aristex™ interior.
- ▶ See page 28 for Standard and Shaker Mullion Door style availability and grid configurations.
- ▶ Mullion Door cabinets are not available in Teagan or VanWyke.

DESIGN SOLUTIONS

- ▶ Apply an End Panel Skin to create a flush end on the side of a Wall cabinet if installed at the end of a run for ease of Moulding installation.
- ▶ For complementary Wall Mullion Door cabinets in Teagan, order as Winstead Maple, as Teagan features a slab door design.

Wall Cabinets with Mullion Doors, 24" High, 12" Deep



WMD2424*

WMD2724B
WMD3024B
WMD3324B
WMD3624B

*Specify L or R on all single door Arch styles.

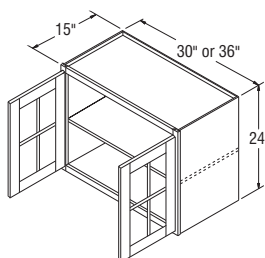
NOTES ✓

- ▶ One adjustable 3/4" thick matching Aristex™ shelf aligns with door mullions on Standard mullions, but does not align on Shaker mullions.
- ▶ Cabinets include installed, clear tempered glass, and matching Aristex™ interior.
- ▶ See page 28 for Standard and Shaker Mullion Door style availability and grid configurations.
- ▶ Mullion Door cabinets are not available in Teagan or VanWyke.

DESIGN SOLUTIONS

- ▶ Apply an End Panel Skin to create a flush end on the side of a Wall cabinet if installed at the end of a run for ease of Moulding installation.
- ▶ For complementary Wall Mullion Door cabinets in Teagan, order as Winstead Maple, as Teagan features a slab door design.

Wall Cabinets with Mullion Doors, 24" High, 15" Deep



WMD302415B
WMD362415B

NOTES ✓

- ▶ One adjustable 3/4" thick matching Aristex™ shelf aligns with door mullions on Standard mullions, but does not align on Shaker mullions.
- ▶ Cabinets include installed, clear tempered glass, and matching Aristex™ interior.
- ▶ See page 28 for Standard and Shaker Mullion Door style availability and grid configurations.
- ▶ Mullion Door cabinets are not available in Teagan or VanWyke.

DESIGN SOLUTIONS

- ▶ Apply an End Panel Skin to create a flush end on the side of a Wall cabinet if installed at the end of a run for ease of Moulding installation.
- ▶ For complementary Wall Mullion Door cabinets in Teagan, order as Winstead Maple, as Teagan features a slab door design.

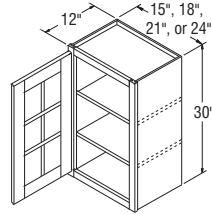
NOTES ✓

- ▶ Two adjustable 3/4" thick matching Aristex™ shelves align with door mullions on Standard mullions, but do not align on Shaker mullions.
- ▶ Cabinets include installed, clear tempered glass and matching Aristex™ interior.
- ▶ See page 28 for Standard and Shaker Mullion Door style availability and grid configurations.
- ▶ Mullion Door cabinets are not available in Teagan or VanWyke.

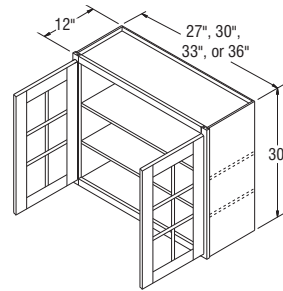
DESIGN SOLUTIONS

- ▶ Apply an End Panel Skin to create a flush end on the side of a Wall cabinet if installed at the end of a run for ease of Moulding installation.
- ▶ For complementary Wall Mullion Door cabinets in Teagan, order as Winstead Maple, as Teagan features a slab door design.

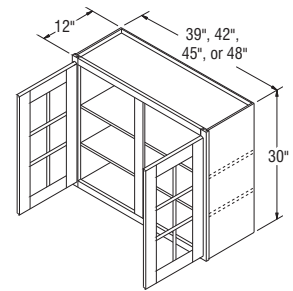
Wall Cabinets with Mullion Doors, 30" High, 12" Deep



WMD1530*
WMD1830*
WMD2130*
WMD2430*



WMD2730B
WMD3030B
WMD3330B
WMD3630B



WMD3930
WMD4230
WMD4530
WMD4830

*Specify L or R on all single door Arch styles.

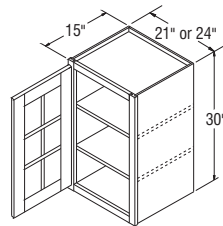
NOTES ✓

- ▶ Two adjustable 3/4" thick matching Aristex™ shelves align with door mullions on Standard mullions, but do not align on Shaker mullions.
- ▶ Cabinets include installed, clear tempered glass, and matching Aristex™ interior.
- ▶ See page 28 for Standard and Shaker Mullion Door style availability and grid configurations.
- ▶ Mullion Door cabinets are not available in Teagan or VanWyke.

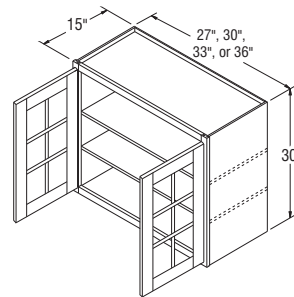
DESIGN SOLUTIONS

- ▶ Apply an End Panel Skin to create a flush end on the side of a Wall cabinet if installed at the end of a run for ease of Moulding installation.
- ▶ For complementary Wall Mullion Door cabinets in Teagan, order as Winstead Maple, as Teagan features a slab door design.

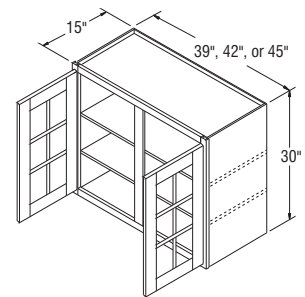
Wall Cabinets with Mullion Doors, 30" High, 15" Deep



WMD213015*
WMD243015*



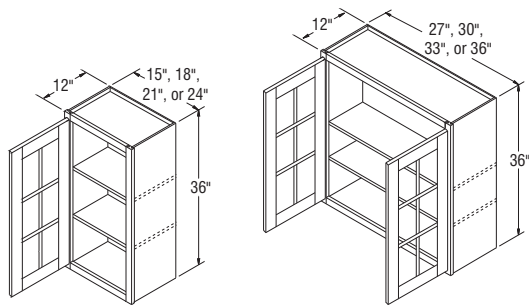
WMD273015B
WMD303015B
WMD333015B
WMD363015B



WMD393015
WMD423015
WMD453015

*Specify L or R on all single door Arch styles.

Wall Cabinets with Mullion Doors, 36" High, 12" Deep



WMD1536*
WMD1836*
WMD2136*
WMD2436*

WMD2736B
WMD3036B
WMD3336B
WMD3636B

*Specify L or R on all single door Arch styles.

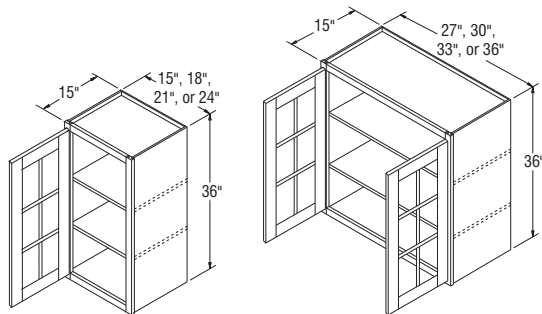
NOTES ✓

- ▶ Two adjustable $\frac{3}{4}$ " thick matching Aristex™ shelves align with door mullions on Standard mullions, but do not align on Shaker mullions.
- ▶ Cabinets include installed, clear tempered glass and matching Aristex™ interior.
- ▶ See page 28 for Standard and Shaker Mullion Door style availability and grid configurations.
- ▶ Mullion Door cabinets are not available in Teagan or VanWyke.

DESIGN SOLUTIONS

- ▶ Apply an End Panel Skin to create a flush end on the side of a Wall cabinet if installed at the end of a run for ease of Moulding installation.
- ▶ For complementary Wall Mullion Door cabinets in Teagan, order as Winstead Maple, as Teagan features a slab door design.

Wall Cabinets with Mullion Doors, 36" High, 15" Deep



WMD153615*
WMD183615*
WMD213615*
WMD243615*

WMD273615B
WMD303615B
WMD333615B
WMD363615B

*Specify L or R on all single door Arch styles.

NOTES ✓

- ▶ Two adjustable $\frac{3}{4}$ " thick matching Aristex™ shelves align with door mullions on Standard mullions, but do not align on Shaker mullions.
- ▶ Cabinets include installed, clear tempered glass, and matching Aristex™ interior.
- ▶ See page 28 for Standard and Shaker Mullion Door style availability and grid configurations.
- ▶ Mullion Door cabinets are not available in Teagan or VanWyke.

DESIGN SOLUTIONS

- ▶ Apply an End Panel Skin to create a flush end on the side of a Wall cabinet if installed at the end of a run for ease of Moulding installation.
- ▶ For complementary Wall Mullion Door cabinets in Teagan, order as Winstead Maple, as Teagan features a slab door design.

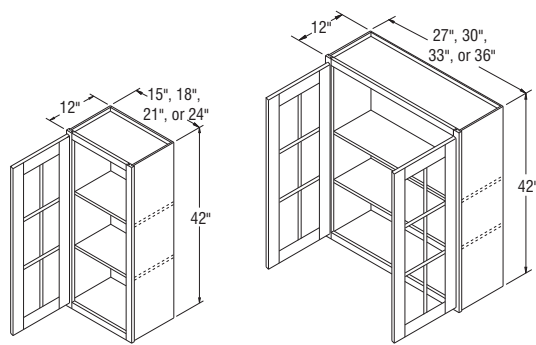
Wall Cabinets with Mullion Doors, 42" High, 12" Deep

NOTES ✓

- ▶ Two adjustable 3/4" thick matching Aristex™ shelves align with door mullions on Standard mullions, but do not align on Shaker mullions.
- ▶ Cabinets include installed, clear tempered glass and matching Aristex™ interior.
- ▶ See page 28 for Standard and Shaker Mullion Door style availability and grid configurations.
- ▶ Mullion Door cabinets are not available in Teagan or VanWyke.

DESIGN SOLUTIONS

- ▶ Apply an End Panel Skin to create a flush end on the side of a Wall cabinet if installed at the end of a run for ease of Moulding installation.
- ▶ For complementary Wall Mullion Door cabinets in Teagan, order as Winstead Maple, as Teagan features a slab door design.



- WMD1542***
- WMD1842***
- WMD2142***
- WMD2442***

- WMD2742B**
- WMD3042B**
- WMD3342B**
- WMD3642B**

*Specify L or R on all single door Arch styles.

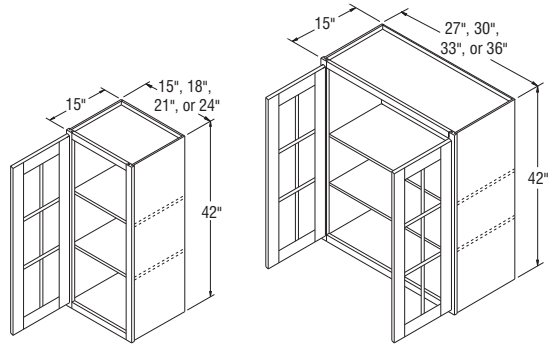
NOTES ✓

- ▶ Two adjustable 3/4" thick matching Aristex™ shelves align with door mullions on Standard mullions, but do not align on Shaker mullions.
- ▶ Cabinets include installed, clear tempered glass, and matching Aristex™ interior.
- ▶ See page 28 for Standard and Shaker Mullion Door style availability and grid configurations.
- ▶ Mullion Door cabinets are not available in Teagan or VanWyke.

DESIGN SOLUTIONS

- ▶ Apply an End Panel Skin to create a flush end on the side of a Wall cabinet if installed at the end of a run for ease of Moulding installation.
- ▶ For complementary Wall Mullion Door cabinets in Teagan, order as Winstead Maple, as Teagan features a slab door design.

Wall Cabinets with Mullion Doors, 42" High, 15" Deep

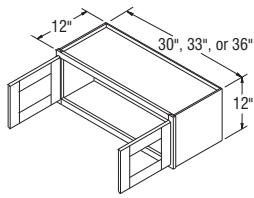


- WMD154215***
- WMD184215***
- WMD214215***
- WMD244215***

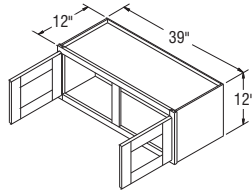
- WMD274215B**
- WMD304215B**
- WMD334215B**
- WMD364215B**

*Specify L or R on all single door Arch styles.

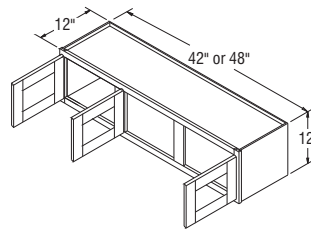
Wall Cabinets with Doors Prepped for Glass, 12" High, 12" Deep



WPG3012B
WPG3312B
WPG3612B



WPG3912



WPG4212
WPG4812

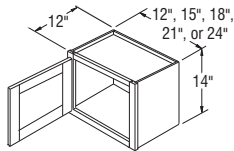
NOTES ✓

- ▶ Shelves not available in cabinets less than 24" in height.
- ▶ Cabinets include matching Aristex™ interior and clips to install glass (glass not included).
- ▶ Wall Prepped for Glass cabinets are not available in Augusta, Teagan, or VanWyke.
- ▶ Center door on WPG4212 and WPG4812 will be hinged on the left.
- ▶ Doors Only for WPG cabinets can be ordered to meet the need for Doors Cut for Glass.

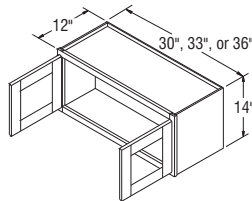
DESIGN SOLUTIONS

- ▶ Apply an End Panel Skin to create a flush end on the side of a Wall cabinet if installed at the end of a run for ease of Moulding installation.
- ▶ For complementary Wall Prepped for Glass cabinets in Teagan, order as Winstead Maple, as Teagan features a slab door design.

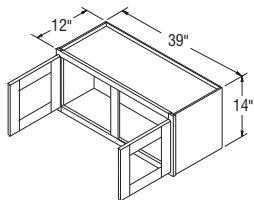
Wall Cabinets with Doors Prepped for Glass, 14" High, 12" Deep



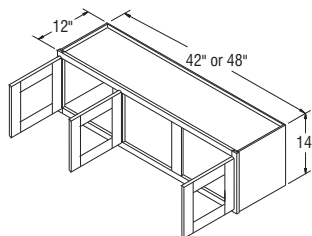
WPG1214*
WPG1514*
WPG1814*
WPG2114*
WPG2414*



WPG3014B
WPG3314B
WPG3614B



WPG3914



WPG4214
WPG4814

NOTES ✓

- ▶ Shelves not available in cabinets less than 24" in height.
- ▶ Cabinets include matching Aristex™ interior and clips to install glass (glass not included).
- ▶ Wall Prepped for Glass cabinets are not available in Augusta, Teagan, or VanWyke.
- ▶ Center door on WPG4214 and WPG4814 will be hinged on the left.
- ▶ Doors Only for WPG cabinets can be ordered to meet the need for Doors Cut for Glass.

DESIGN SOLUTIONS

- ▶ Apply an End Panel Skin to create a flush end on the side of a Wall cabinet if installed at the end of a run for ease of Moulding installation.
- ▶ For complementary Wall Prepped for Glass cabinets in Teagan, order as Winstead Maple, as Teagan features a slab door design.

*Specify L or R on all single door Arch styles.

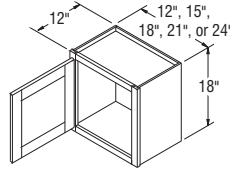
NOTES ✓

- ▶ Shelves not available in cabinets less than 24" in height.
- ▶ Cabinets include matching Aristex™ interior and clips to install glass (glass not included).
- ▶ Wall Prepped for Glass cabinets are not available in Augusta, Teagan, or VanWyke.
- ▶ Doors Only for WPG cabinets can be ordered to meet the need for Doors Cut for Glass.

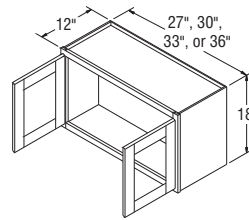
DESIGN SOLUTIONS

- ▶ Apply an End Panel Skin to create a flush end on the side of a Wall cabinet if installed at the end of a run for ease of Moulding installation.
- ▶ For complementary Wall Prepped for Glass cabinets in Teagan, order as Winstead Maple, as Teagan features a slab door design.

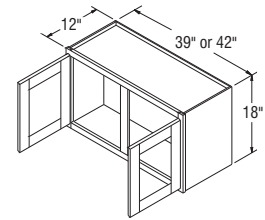
Wall Cabinets with Doors Prepped for Glass, 18" High, 12" Deep



- WPG1218***
- WPG1518***
- WPG1818***
- WPG2118***
- WPG2418***



- WPG2718B**
- WPG3018B**
- WPG3318B**
- WPG3618B**



- WPG3918**
- WPG4218**

*Specify L or R on all single door Arch styles.

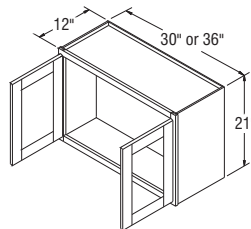
NOTES ✓

- ▶ Cabinets include matching Aristex™ interior and clips to install glass (glass not included).
- ▶ Wall Prepped for Glass cabinets are not available in Augusta, Teagan, or VanWyke.
- ▶ Doors Only for WPG cabinets can be ordered to meet the need for Doors Cut for Glass.
- ▶ Doors Only for WPG cabinets can be ordered to meet the need for Doors Cut for Glass.

DESIGN SOLUTIONS

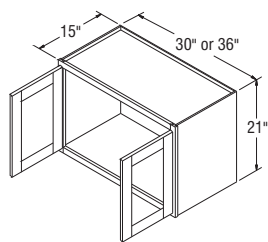
- ▶ Apply an End Panel Skin to create a flush end on the side of a Wall cabinet if installed at the end of a run for ease of Moulding installation.
- ▶ For complementary Wall Prepped for Glass cabinets in Teagan, order as Winstead Maple, as Teagan features a slab door design.

Wall Cabinets with Doors Prepped for Glass, 21" High, 12" Deep



- WPG3021B**
- WPG3621B**

Wall Cabinets with Doors Prepped for Glass, 21" High, 15" Deep



WPG302115B
WPG362115B

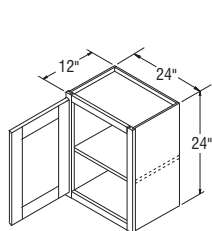
NOTES ✓

- ▶ Shelves not available in cabinets less than 24" in height.
- ▶ Cabinets include matching Aristex™ interior and clips to install glass (glass not included).
- ▶ Wall Prepped for Glass cabinets are not available in Augusta, Teagan, or VanWyke.
- ▶ Doors Only for WPG cabinets can be ordered to meet the need for Doors Cut for Glass.

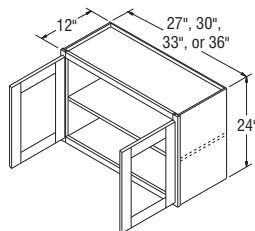
DESIGN SOLUTIONS

- ▶ Apply an End Panel Skin to create a flush end on the side of a Wall cabinet if installed at the end of a run for ease of Moulding installation.
- ▶ For complementary Wall Prepped for Glass cabinets in Teagan, order as Winstead Maple, as Teagan features a slab door design.

Wall Cabinets with Doors Prepped for Glass, 24" High, 12" Deep



WPG2424*



WPG2724B
WPG3024B
WPG3324B
WPG3624B

*Specify L or R on all single door Arch styles.

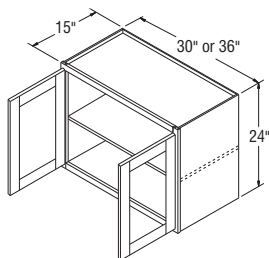
NOTES ✓

- ▶ Cabinets include matching Aristex™ interior, one adjustable 3/4" thick matching Aristex™ shelf, and clips to install glass (glass not included).
- ▶ Wall Prepped for Glass cabinets are not available in Augusta, Teagan, or VanWyke.
- ▶ Doors Only for WPG cabinets can be ordered to meet the need for Doors Cut for Glass.

DESIGN SOLUTIONS

- ▶ Apply an End Panel Skin to create a flush end on the side of a Wall cabinet if installed at the end of a run for ease of Moulding installation.
- ▶ For complementary Wall Prepped for Glass cabinets in Teagan, order as Winstead Maple, as Teagan features a slab door design.

Wall Cabinets with Doors Prepped for Glass, 24" High, 15" Deep



WPG302415B
WPG362415B

NOTES ✓

- ▶ Cabinets include matching Aristex™ interior, two adjustable 3/4" thick matching Aristex™ shelves, and clips to install glass (glass not included).
- ▶ Wall Prepped for Glass cabinets are not available in Augusta, Teagan, or VanWyke.
- ▶ Doors Only for WPG cabinets can be ordered to meet the need for Doors Cut for Glass.

DESIGN SOLUTIONS

- ▶ Apply an End Panel Skin to create a flush end on the side of a Wall cabinet if installed at the end of a run for ease of Moulding installation.
- ▶ For complementary Wall Prepped for Glass cabinets in Teagan, order as Winstead Maple, as Teagan features a slab door design.

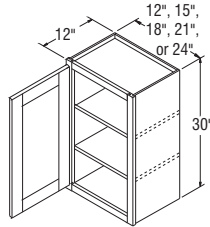
NOTES ✓

- ▶ Cabinets include matching Aristex™ interior, two adjustable 3/4" thick matching Aristex™ shelves, and clips to install glass (glass not included).
- ▶ Wall Prepped for Glass cabinets are not available in Augusta, Teagan, or VanWyke.
- ▶ Doors Only for WPG cabinets can be ordered to meet the need for Doors Cut for Glass.

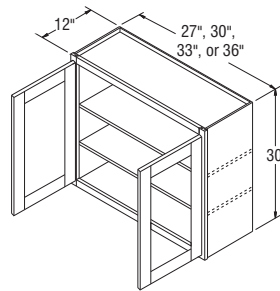
DESIGN SOLUTIONS

- ▶ Apply an End Panel Skin to create a flush end on the side of a Wall cabinet if installed at the end of a run for ease of Moulding installation.
- ▶ For complementary Wall Prepped for Glass cabinets in Teagan, order as Winstead Maple, as Teagan features a slab door design.

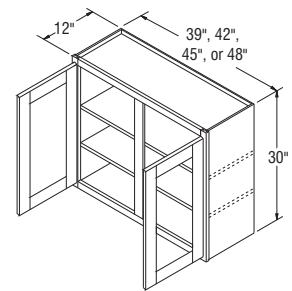
Wall Cabinets with Doors Prepped for Glass, 30" High, 12" Deep



WPG1230*
WPG1530*
WPG1830*
WPG2130*
WPG2430*



WPG2730B
WPG3030B
WPG3330B
WPG3630B



WPG3930
WPG4230
WPG4530
WPG4830

*Specify L or R on all single door Arch styles.

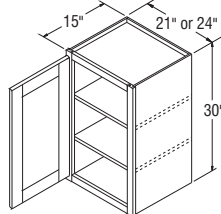
NOTES ✓

- ▶ Cabinets include matching Aristex™ interior, two adjustable 3/4" thick matching Aristex™ shelves, and clips to install glass (glass not included).
- ▶ Wall Prepped for Glass cabinets are not available in Augusta, Teagan, or VanWyke.
- ▶ Doors Only for WPG cabinets can be ordered to meet the need for Doors Cut for Glass.

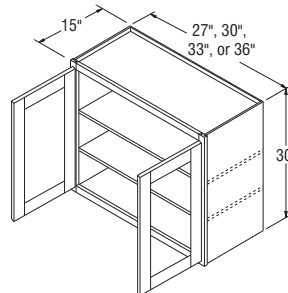
DESIGN SOLUTIONS

- ▶ Apply an End Panel Skin to create a flush end on the side of a Wall cabinet if installed at the end of a run for ease of Moulding installation.
- ▶ For complementary Wall Prepped for Glass cabinets in Teagan, order as Winstead Maple, as Teagan features a slab door design.

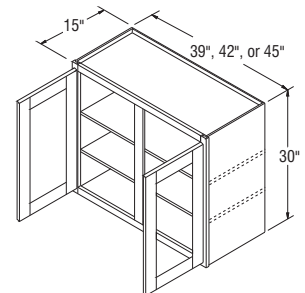
Wall Cabinets with Doors Prepped for Glass, 30" High, 15" Deep



WPG213015*
WPG243015*



WPG273015B
WPG303015B
WPG333015
WPG363015B



WPG393015
WPG423015
WPG453015

*Specify L or R on all single door Arch styles.

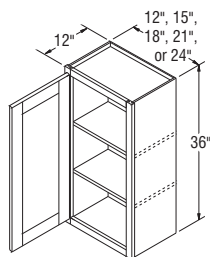
NOTES ✓

- ▶ Cabinets include matching Aristex™ interior, two adjustable 3/4" thick matching Aristex™ shelves, and clips to install glass (glass not included).
- ▶ Wall Prepped for Glass cabinets are not available in Augusta, Teagan, or VanWyke.
- ▶ Doors Only for WPG cabinets can be ordered to meet the need for Doors Cut for Glass.

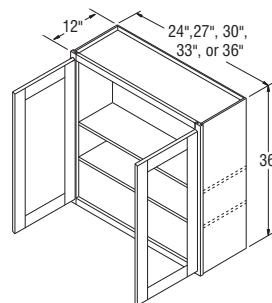
DESIGN SOLUTIONS

- ▶ Apply an End Panel Skin to create a flush end on the side of a Wall cabinet if installed at the end of a run for ease of Moulding installation.
- ▶ For complementary Wall Prepped for Glass cabinets in Teagan, order as Winstead Maple, as Teagan features a slab door design.

Wall Cabinets with Doors Prepped for Glass, 36" High, 12" Deep



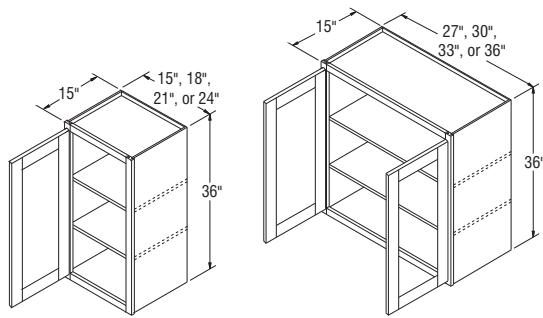
WPG1236*
WPG1536*
WPG1836*
WPG2136*
WPG2436*



WPG2436DD
WPG2736B
WPG3036B
WPG3336B
WPG3636B

*Specify L or R on all single door Arch styles.

Wall Cabinets with Doors Prepped for Glass, 36" High, 15" Deep



WPG153615*
WPG183615*
WPG213615*
WPG243615*

WPG273615B
WPG303615B
WPG333615B
WPG363615B

*Specify L or R on all single door Arch styles.

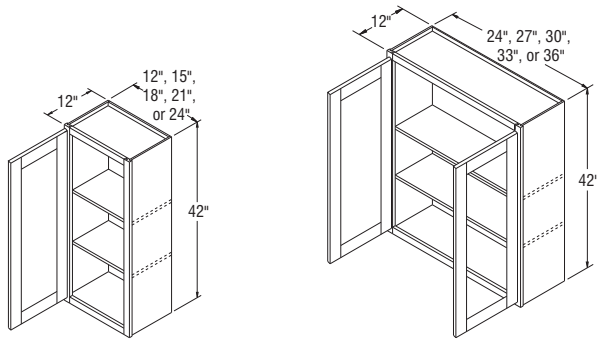
NOTES ✓

- ▶ Cabinets include matching Aristex™ interior, two adjustable ¾" thick matching Aristex™ shelves, and clips to install glass (glass not included).
- ▶ Wall Prepped for Glass cabinets are not available in Augusta, Teagan, or VanWyke.
- ▶ Doors Only for WPG cabinets can be ordered to meet the need for Doors Cut for Glass.

DESIGN SOLUTIONS

- ▶ Apply an End Panel Skin to create a flush end on the side of a Wall cabinet if installed at the end of a run for ease of Moulding installation.
- ▶ For complementary Wall Prepped for Glass cabinets in Teagan, order as Winstead Maple, as Teagan features a slab door design.

Wall Cabinets with Doors Prepped for Glass, 42" High, 12" Deep



WPG1242*
WPG1542*
WPG1842*
WPG2142*
WPG2442*

WPG2442DD
WPG2742B
WPG3042B
WPG3342B
WPG3642B

*Specify L or R on all single door Arch styles.

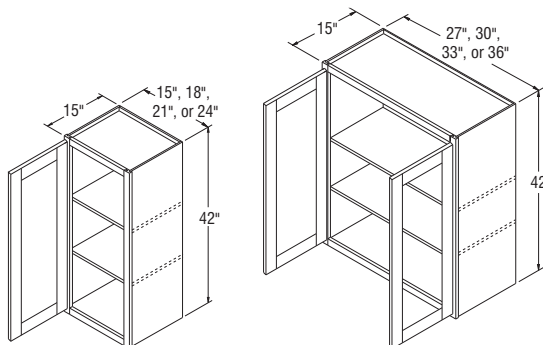
NOTES ✓

- ▶ Cabinets include matching Aristex™ interior, two adjustable ¾" thick matching Aristex™ shelves, and clips to install glass (glass not included).
- ▶ Wall Prepped for Glass cabinets are not available in Augusta, Teagan, or VanWyke.
- ▶ Doors Only for WPG cabinets can be ordered to meet the need for Doors Cut for Glass.

DESIGN SOLUTIONS

- ▶ Apply an End Panel Skin to create a flush end on the side of a Wall cabinet if installed at the end of a run for ease of Moulding installation.
- ▶ For complementary Wall Prepped for Glass cabinets in Teagan, order as Winstead Maple, as Teagan features a slab door design.

Wall Cabinets with Doors Prepped for Glass, 42" High, 15" Deep



WPG154215*
WPG184215*
WPG214215*
WPG244215*

WPG274215B
WPG304215B
WPG334215B
WPG364215B

*Specify L or R on all single door Arch styles.

NOTES ✓

- ▶ Cabinets include matching Aristex™ interior, two adjustable ¾" thick matching Aristex™ shelves, and clips to install glass (glass not included).
- ▶ Wall Prepped for Glass cabinets are not available in Augusta, Teagan, or VanWyke.
- ▶ Doors Only for WPG cabinets can be ordered to meet the need for Doors Cut for Glass.

DESIGN SOLUTIONS

- ▶ Apply an End Panel Skin to create a flush end on the side of a Wall cabinet if installed at the end of a run for ease of Moulding installation.
- ▶ For complementary Wall Prepped for Glass cabinets in Teagan, order as Winstead Maple, as Teagan features a slab door design.

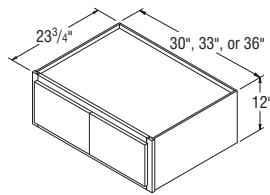
Refrigerator Wall Cabinets, 12" High, 23 3/4" Deep

NOTES ✓

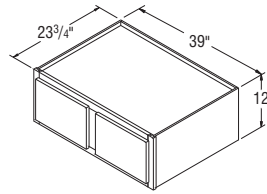
- ▶ Shelves not available in cabinets less than 24" in height.
- ▶ Cabinets must be supported on three surfaces when mounted.
- ▶ Center door on RW4812 will be hinged on the left.
- ▶ When designing for built-in refrigerators, be sure to use necessary Fillers to provide proper clearance.

DESIGN SOLUTIONS

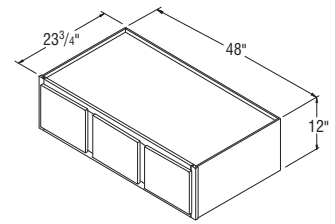
- ▶ Apply an End Panel Skin to create a flush end on the side of a Wall cabinet if installed at the end of a run for ease of Moulding installation.



RW3012B
RW3312B
RW3612B



RW3912



RW4812

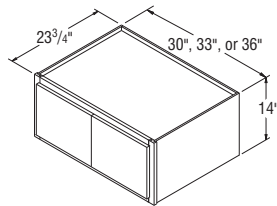
NOTES ✓

- ▶ Shelves not available in cabinets less than 24" in height.
- ▶ Cabinets must be supported on three surfaces when mounted.
- ▶ When designing for built-in refrigerators, be sure to use necessary Fillers to provide proper clearance.

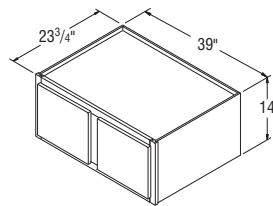
DESIGN SOLUTIONS

- ▶ Apply an End Panel Skin to create a flush end on the side of a Wall cabinet if installed at the end of a run for ease of Moulding installation.

Refrigerator Wall Cabinets, 14" High, 23 3/4" Deep



RW3014B
RW3314B
RW3614B



RW3914

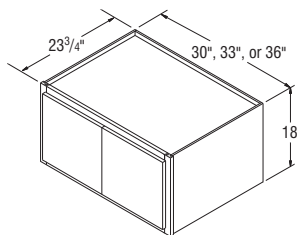
NOTES ✓

- ▶ Shelves not available in cabinets less than 24" in height.
- ▶ Cabinets must be supported on three surfaces when mounted.
- ▶ When designing for built-in refrigerators, be sure to use necessary Fillers to provide proper clearance.

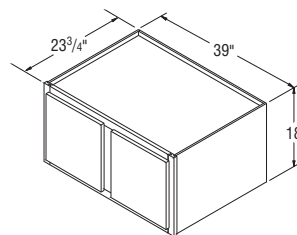
DESIGN SOLUTIONS

- ▶ Apply an End Panel Skin to create a flush end on the side of a Wall cabinet if installed at the end of a run for ease of Moulding installation.

Refrigerator Wall Cabinets, 18" High, 23 3/4" Deep

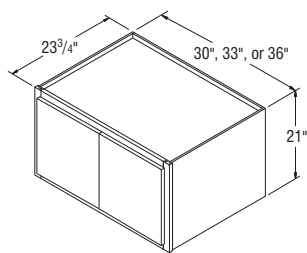


RW3018B
RW3318B
RW3618B

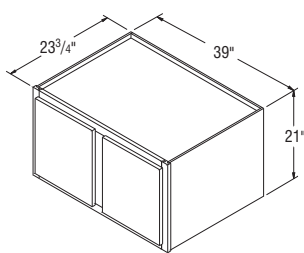


RW3918

Refrigerator Wall Cabinets, 21" High, 23 3/4" Deep



RW3021B
RW3321B
RW3621B



RW3921

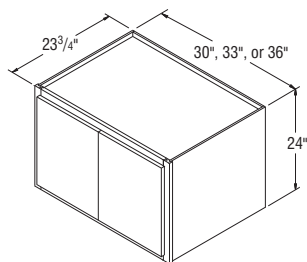
NOTES ✓

- ▶ Shelves not available in cabinets less than 24" in height.
- ▶ Cabinets must be supported on three surfaces when mounted.
- ▶ When designing for built-in refrigerators, be sure to use necessary Fillers to provide proper clearance.

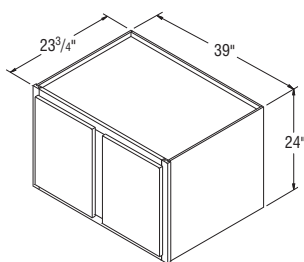
DESIGN SOLUTIONS

- ▶ Apply an End Panel Skin to create a flush end on the side of a Wall cabinet if installed at the end of a run for ease of Moulding installation.

Refrigerator Wall Cabinets, 24" High, 23 3/4" Deep



RW3024B
RW3324B
RW3624B



RW3924

NOTES ✓

- ▶ Shelves not included.
- ▶ Cabinets must be supported on three surfaces when mounted.
- ▶ When designing for built-in refrigerators, be sure to use necessary Fillers to provide proper clearance.

DESIGN SOLUTIONS

- ▶ Apply an End Panel Skin to create a flush end on the side of a Wall cabinet if installed at the end of a run for ease of Moulding installation.

NOTES ✓

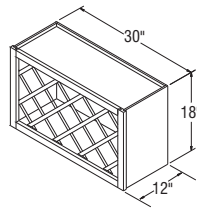
- ▶ Matching Aristex™ interior.
- ▶ Can be installed horizontally or vertically.
- ▶ When installed vertically, wine rack can't be used as the end cabinet because the ends are recessed. Frame rail configuration will be unique from adjacent cabinets when installed vertically.
- ▶ WR3018 holds 11 bottles.
- ▶ WR3614 holds 13 bottles.
- ▶ Wine bottles may extend beyond face frame. Not recommended for high traffic areas.

DESIGN SOLUTIONS

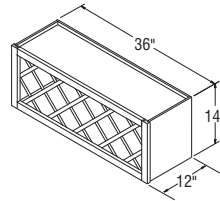
- ▶ Apply an End Panel Skin to create a flush end on the side of a Wall cabinet if installed at the end of a run for ease of Moulding installation.



Wine Rack Cabinets, 12" Deep



WR3018



WR3614

NOTES ✓

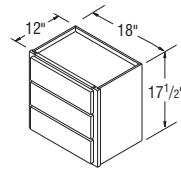
- ▶ Drawer guides are side-mount Full Extension.
- ▶ Dovetail drawer not available.
- ▶ Outside edge profile will match door.
- ▶ In countertop applications, backsplash must be cut out for flush installation against a wall.

DESIGN SOLUTIONS

- ▶ Apply an End Panel Skin to create a flush end on the side of a Wall cabinet if installed at the end of a run for ease of Moulding installation.

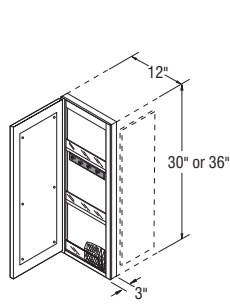


Wall Drawer Unit, 17 1/2" High, 18" Wide, 12" Deep

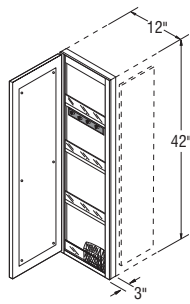


WD1817.5

Wall Message Center Cabinets, 12" Wide, 3" Deep



WMC1230*
WMC1236*



WMC1242*

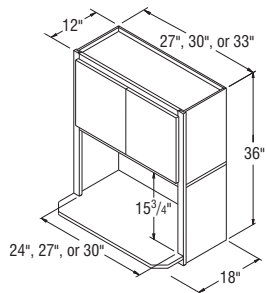
*Specify L or R on all styles. Cabinet should be hinged on wall side.

NOTES ✓

- ▶ Cabinets include magnetic white board on back of door, key hooks, pencil holder, and fixed plexiglass-fronted $\frac{3}{4}$ " thick shelves.
- ▶ For proper installation, adjacent cabinet must have $\frac{1}{4}$ " panel applied, not included with WMC.
- ▶ Cabinet will have flush plywood ends to allow for application of Overlays or Split Turnings.



Microwave Wall Cabinets, 36" High, 30" Wide, 12" Deep

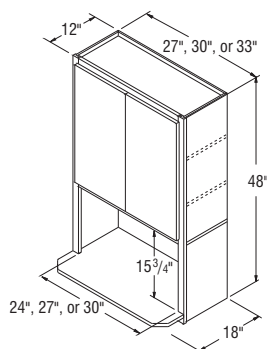


MWC2736B
MWC3036B
MWC3336B

NOTES ✓

- ▶ One fixed shelf for microwave and one fixed shelf for upper section.
- ▶ Bottom shelf ships loose, includes standard shelf clips.
- ▶ Matching Aristex™ interior throughout cabinet.
- ▶ Two doors.
- ▶ Cannot be installed next to Diagonal Wall cabinets.
- ▶ When using with 30" Wall cabinets, the MWC3036 will hang 6" below the Wall cabinet line.
- ▶ Designed for free-standing microwaves.
- ▶ Cabinet must be supported on both sides. Not intended for end of run.

Microwave Wall Cabinets, 48" High, 30" Wide, 12" Deep



MWC3048B
MWC3048B
MWC3348B

NOTES ✓

- ▶ Two adjustable $\frac{3}{4}$ " shelves, one fixed shelf for microwave (bottom shelf ships loose, includes standard shelf clips), and one fixed shelf for upper section.
- ▶ Matching Aristex™ interior throughout cabinet
- ▶ Two doors.
- ▶ Cannot be installed next to Diagonal Wall cabinets.
- ▶ When using with 42" Wall cabinets, the MWC3048 will hang 6" below the Wall cabinet line.
- ▶ Designed for free-standing microwaves.
- ▶ Cabinet must be supported on both sides. Not intended for end of run.

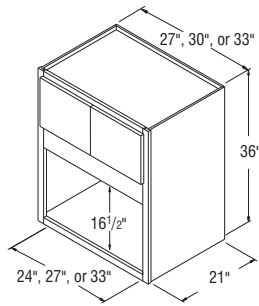


NOTES ✓

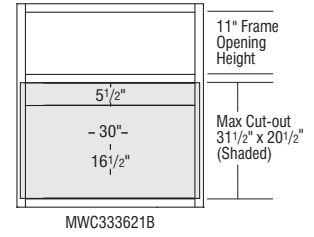
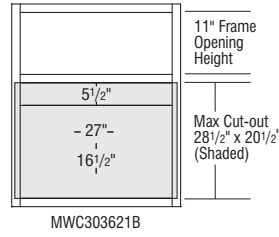
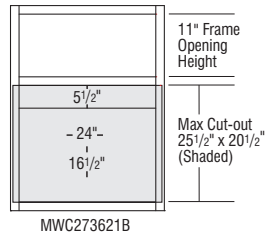
- ▶ Matching Aristex™ interior throughout cabinet.
- ▶ Microwave opening is trimmable.
- ▶ Minimum opening – 27" W x 16½" H. Maximum opening – 27" W x 20½" H.
- ▶ Designed for built-in microwaves with trim kits.
- ▶ Cabinet must be supported on both sides. Not intended for end of run.



Wall Built-In Microwave Cabinets, 36" High, 30" Wide, 21" Deep



- MWC273621B**
- MWC303621B**
- MWC333621B**

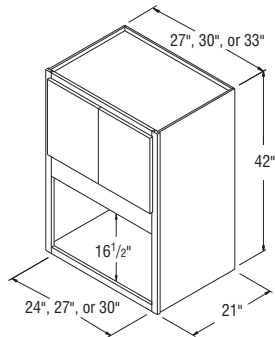


NOTES ✓

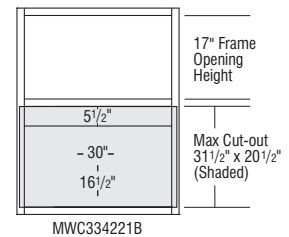
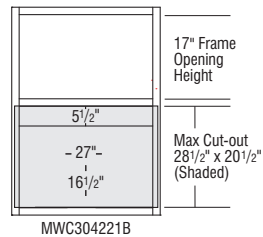
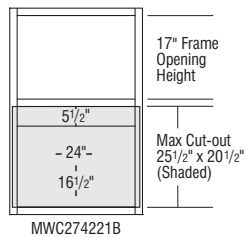
- ▶ Matching Aristex™ interior throughout cabinet.
- ▶ Microwave opening is trimmable.
- ▶ Minimum opening – 27" W x 16½" H. Maximum opening – 27" W x 20½" H.
- ▶ Designed for built-in microwaves with trim kits.
- ▶ Cabinet must be supported on both sides. Not intended for end of run.



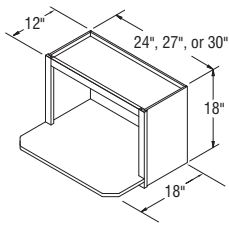
Wall Built-In Microwave Cabinets, 42" High, 30" Wide, 21" Deep



- MWC274221B**
- MWC304221B**
- MWC334221B**



Microwave Wall Open Shelf, 18" Deep



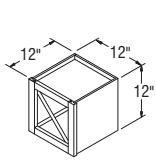
MWOL2418
MWOL2718
MWOL3018

NOTES ✓

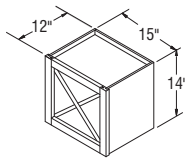
- ▶ Shelf extends an additional 2½".
- ▶ Matching Aristex™ interior.
- ▶ Cabinet must be supported on both sides. Not intended for end of run.



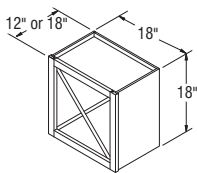
Wine Storage Cabinets *New*



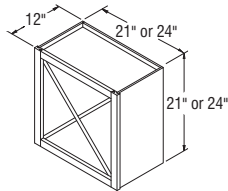
W121212



WSC151412



WSC181812
WSC181818



WSC212112
WSC242412

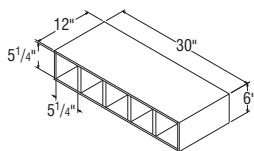
SKU	# of Bottles
WSC121212	4
WSC151412	8
WSC181812	18
WSC181818	18
WSC212112	24
WSC242412	32

NOTES ✓

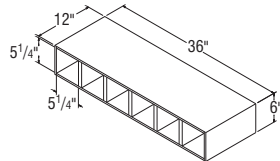
- ▶ Must be installed between two cabinets, between cabinet and wall, or mounted to a horizontal surface.
- ▶ X configuration cannot be removed.
- ▶ Capacity will vary depending on wine bottle size.



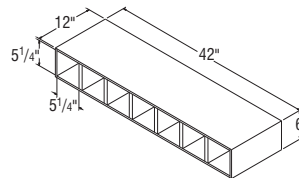
Wine Cubes, 12" Deep



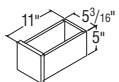
(5 openings)



(6 openings)

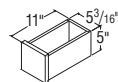


(7 openings)



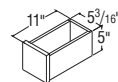
(includes 5 drawers)

WCUBE30
WCUBEDRW5



(includes 6 drawers)

WCUBE36
WCUBEDRW6



(includes 7 drawers)

WCUBE42
WCUBEDRW7

NOTES ✓

- ▶ Matching veneered finish interior.
- ▶ WCUBE may be positioned horizontally or vertically.
- ▶ WCUBEDRW features four-sided drawer boxes, no slides required. Does not include decorative hardware on any style.

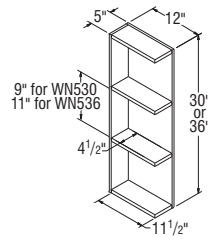


NOTES ✓

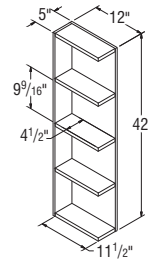
- ▶ Matching veneered finish interior.



What-Not Shelves, 30" , 36" , and 42" High, 12" Wide, 5" Deep



WN530
WN536



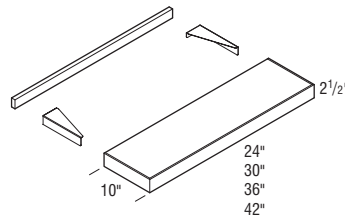
WN542

NOTES ✓

- ▶ Only available in Cherry, Maple and Oak species.
- ▶ Paint finishes available; PureStyle™ not available.
- ▶ Includes wood mounting plate with metal brackets. Once installed, mounting system is fully concealed.
- ▶ 3/4" thick solid wood front and sides. 3/8" veneered furniture board top and bottom. Front and ends are mitered together.
- ▶ No modifications are available for this product.



Floating Shelves *New*

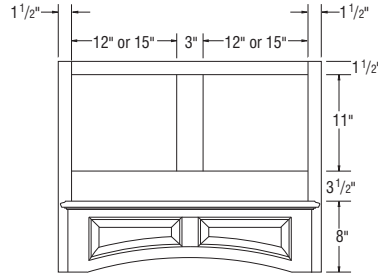
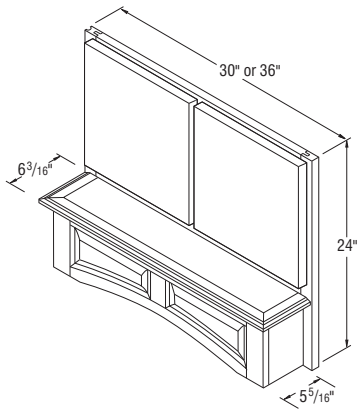


FS24
FS30
FS36
FS42

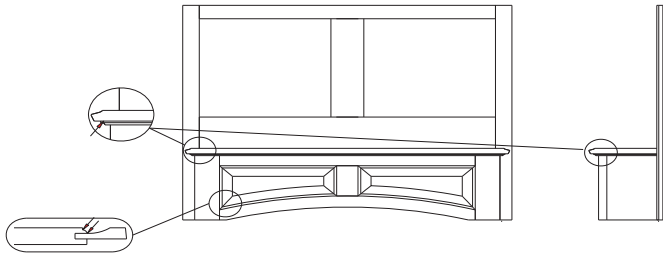
Weight Capacity per Shelf	
FS24	25 lbs.
FS30	31.5 lbs.
FS36	37.5 lbs.
FS42	43.75 lbs.

Canopy Wood Hoods, Arch, 30" and 36" Wide, 24" High

NOTES ✓



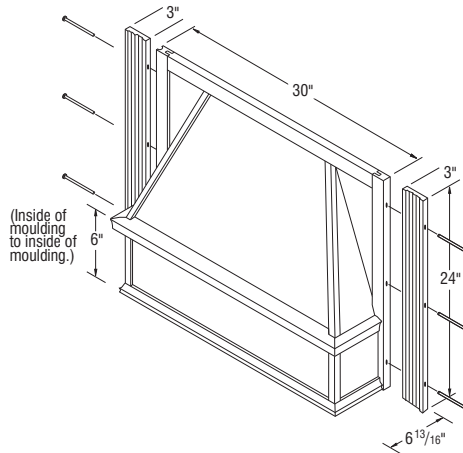
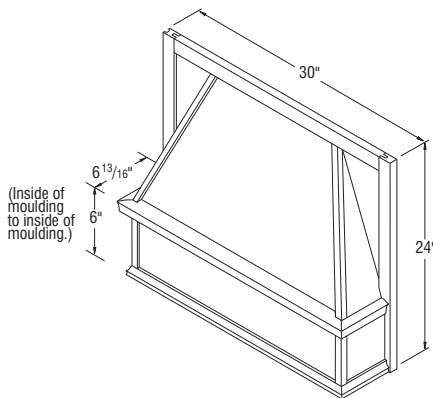
WHCA30
WHCA36



- ▶ Butt door styles will utilize butt door sizes, frame will always have a 3" center mullion.
- ▶ Install Wood Hoods between adjoining 12" deep cabinets (15" deep cabinets are not recommended).
- ▶ Doors matching the style ordered will be installed on hood.
- ▶ Durham and Overton Toasted Antique doors will have a glazed appearance, but rest of wood hood unit will be painted Antique.
- ▶ Wood Hoods ordered in Rustic Birch will not feature Rustic characteristics.
- ▶ Exhaust system not included. Compatible with TWHBLOWER390, TWHBLOWER500, and TWHCONVKIT.
- ▶ Check your local building code for installation heights above the range.
- ▶ Silver metallic liner included. Liner opening size: 10³/₄" deep by 19¹/₂" wide. Assembly required.
- ▶ Installation instructions and hardware included.
- ▶ Glazed edges indicated by arrows on drawings.

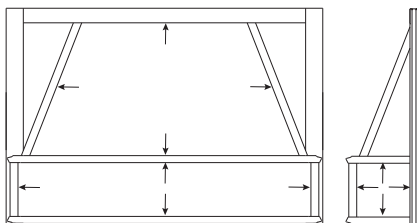
Tapered Wood Hoods, 30" and 36" Wide, 24" High

NOTES ✓



TWH30

TWH36

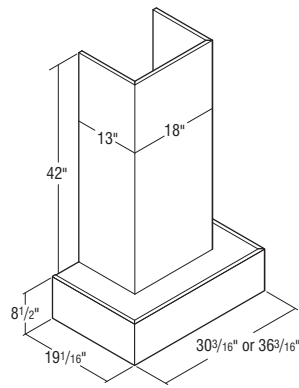


- ▶ Silver metallic liner included. Liner opening size: 10³/₄" deep by 19¹/₂" wide. Assembly required.
- ▶ Install Wood Hoods between adjoining 12" deep cabinets (15" deep cabinets are not recommended).
- ▶ When Antique is used for Durham and Overton, wood hood unit will not feature a glazed appearance. Toasted Antique not available.
- ▶ For Birch and Rustic Birch styles, order Maple. For Thermofoil and PureStyle™, order Maple paint.
- ▶ Check your local building code for installation heights above the range.
- ▶ TWH36 has two plain/fluted stiles with metal wings included to extend Hood to 36" width.
- ▶ Exhaust system not included. Compatible with TWHBLOWER390, TWHBLOWER500, and TWHCONVKIT.
- ▶ Glazed edges indicated by arrows on drawings.

NOTES ✓

- ▶ Freestanding unit (must be properly secured to wall and cannot be attached to adjacent cabinets).
- ▶ Chimney included and can be trimmed. If trimmed, molding is recommended to cover any cut marks.
- ▶ Check your local building code for installation heights above the range.
- ▶ Silver metallic liner included. Assembly required.
- ▶ Installation instructions and hardware included.
- ▶ Liner opening size: 10¹/₄" deep by 19¹/₂" wide.
- ▶ Exhaust system not included. Compatible with TWHBLOWER390, TWHBLOWER500, and TWHCONVKIT.
- ▶ Not available in Glaze finishes.
- ▶ When Antique is used for Durham and Overton, wood hood unit will not feature a glazed appearance. Toasted Antique is not available.
- ▶ For Birch and Rustic Birch styles, order Maple. For Thermofoil and PureStyle™, order Maple paint.

Wood Hood Contemporary Straight, 30" and 36" Wide

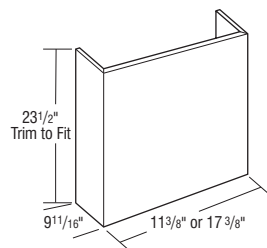


WHCONSTR30
WHCONSTR36

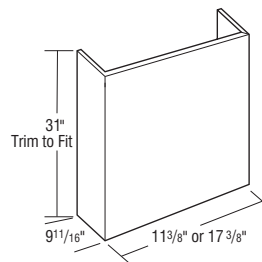
NOTES ✓

- ▶ 3/4" thick plywood.
- ▶ Trimmable.
- ▶ Purchased with corresponding WHS.
- ▶ When Antique is used for Durham and Overton, wood hood unit will not feature a glazed appearance. Toasted Antique is not available.
- ▶ For Birch and Rustic Birch styles, order Maple. For Thermofoil and PureStyle™, order Maple paint.

Wood Hood Chimney, 30" and 36" Wide

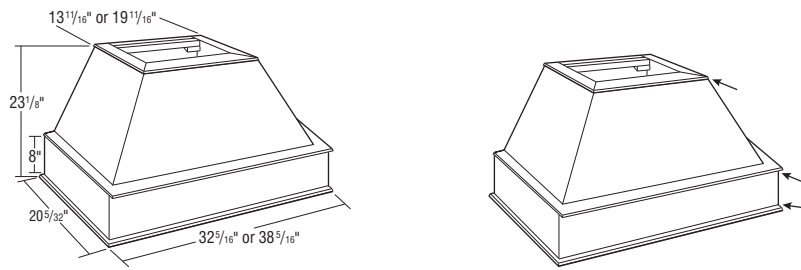


WHC30
WHC36



WHCT30
WHCT36

Wood Hood Square, 30" and 36" Wide

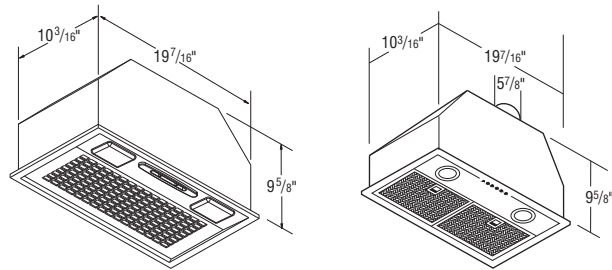


WHS30
WHS36

NOTES ✓

- ▶ Freestanding unit (must be properly secured to wall and cannot be attached to adjacent cabinets).
- ▶ Chimney available (WHC..).
- ▶ Check your local building code for installation heights above the range.
- ▶ Powder coated silver metallic metal liner included.
- ▶ Installation instructions and hardware included.
- ▶ Exhaust system not included. Compatible with TWHBLOWER390, TWHBLOWER500, and TWHCONVKIT.
- ▶ When Antique is used for Durham and Overton, wood hood unit will not feature a glazed appearance. Toasted Antique is not available.
- ▶ For Birch and Rustic Birch styles, order Maple. For Thermofoil and PureStyle™, order Maple paint.
- ▶ Glazed edges indicated by arrows on drawings.

Wood Hood Blower



TWHBLOWER390

TWHBLOWER500

NOTES ✓

- ▶ Compatible with WHCA and TWH Wood Hoods.
- ▶ 6" diameter vent.
- ▶ Silver metallic finish.
- ▶ One year warranty.
- ▶ Two 40-watt candelabra lights, (not included), and three fan setting levels.
- ▶ CFM Rating - TWHBLOWER390: 390 CFM (cubic feet per minute); 6 sones or 53.83 decibels
TWHBLOWER500: 500 CFM (cubic feet per minute); 8.2 sones or 57.98 decibels
- ▶ Order under style #010. Manufacturer recommends 24"-30" clearance between cooking surface and blower unit.
- ▶ Includes a dishwasher-safe aluminum filter for use with external ducting. Does not include charcoal filter for internal ducting with conversion kit (see FILTER390 or FILTER500).

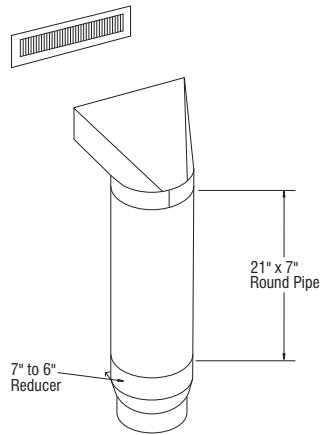


NOTES ✓

- ▶ Kit allows TWHBLOWER390 and TWHBLOWER500 to be vented internally.
- ▶ Order under style #010.
- ▶ Kit includes: One 21" x 7" round pipe, 1 adjustable collar, 1 white metal soffit grille, 1 adjustable boot, a 7" to 6" reducer, and FILTER390 (for TWHBLOWER390) or FILTER500 (for TWHBLOWER500).
- ▶ FILTER390 and FILTER500 also available to order separately for replacements.



Wood Hood Conversion Kit



TWHCONVKIT

NOTES ✓

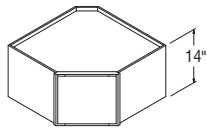
- ▶ Replacement charcoal filter for use when wood hood blower is ducted internally with the wood hood conversion kit (TWHCONVKIT).
- ▶ FILTER390 for use with TWHBLOWER390.
- ▶ FILTER500 for use with TWHBLOWER500.



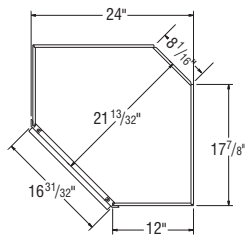
Filters

FILTER390
FILTER500

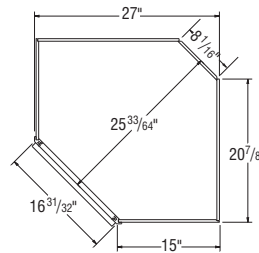
Diagonal Corner Wall Cabinets, 14" High, 12" & 15" Deep *New*



DC2414
DC2714



DC2414
TOP VIEW



DC2714
TOP VIEW

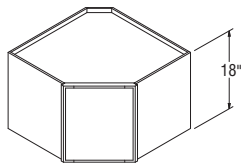
NOTES ✓

- ▶ Shelves not available in cabinets less than 24" in height.
- ▶ All Diagonal Wall cabinets are reversible except for Arch styles.
- ▶ When installing, DC cabinets must be attached to at least one run of cabinets and both back walls.
- ▶ All full overlay doors are smaller to allow for proper door opening.

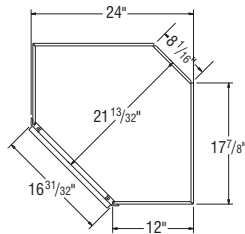
DESIGN SOLUTIONS

- ▶ Apply an End Panel Skin to create a flush end on the side of a Wall cabinet if installed at the end of a run for ease of Moulding installation.

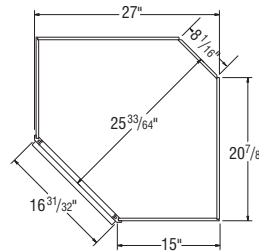
Diagonal Corner Wall Cabinets, 18" High, 12" & 15" Deep *New*



DC2418
DC2718



DC2418
TOP VIEW



DC2718
TOP VIEW

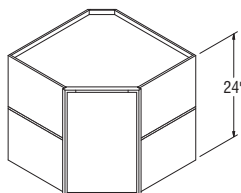
NOTES ✓

- ▶ Shelves not available in cabinets less than 24" in height.
- ▶ All Diagonal Wall cabinets are reversible except for Arch styles.
- ▶ When installing, DC cabinets must be attached to at least one run of cabinets and both back walls.
- ▶ All full overlay doors are smaller to allow for proper door opening.

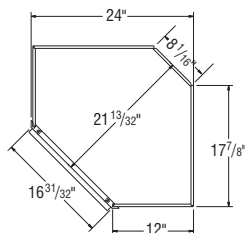
DESIGN SOLUTIONS

- ▶ Apply an End Panel Skin to create a flush end on the side of a Wall cabinet if installed at the end of a run for ease of Moulding installation.

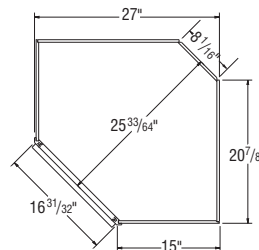
Diagonal Corner Wall Cabinets, 24" High, 12" & 15" Deep *New*



DC2424
DC2724



DC2424
TOP VIEW



DC2724
TOP VIEW

NOTES ✓

- ▶ One adjustable shelf.
- ▶ All Diagonal Wall cabinets are reversible except for Arch styles.
- ▶ When installing, DC cabinets must be attached to at least one run of cabinets and both back walls.
- ▶ All full overlay doors are smaller to allow for proper door opening.

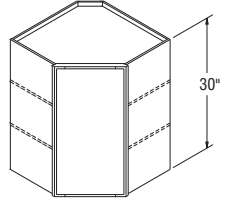
DESIGN SOLUTIONS

- ▶ Apply an End Panel Skin to create a flush end on the side of a Wall cabinet if installed at the end of a run for ease of Moulding installation.

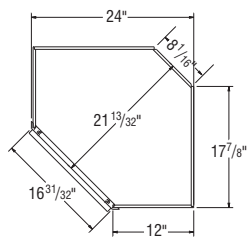
Diagonal Corner Wall Cabinets, 30" High, 12" & 15" Deep

NOTES ✓

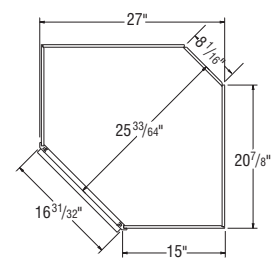
- ▶ Two adjustable shelves.
- ▶ Cabinets use standard natural maple interior, excluding white which has a white interior.
- ▶ All Diagonal Wall cabinets are reversible except for Arch styles.
- ▶ When installing, DC cabinets must be attached to at least one run of cabinets and both back walls.
- ▶ All full overlay doors are smaller to allow for proper door opening.



DC2430*
DC2730*



DC2430
TOP VIEW



DC2730
TOP VIEW

DESIGN SOLUTIONS

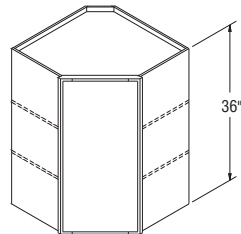
- ▶ Apply an End Panel Skin to create a flush end on the side of a Wall cabinet if installed at the end of a run for ease of Moulding installation.

*Specify L or R on Arch styles.

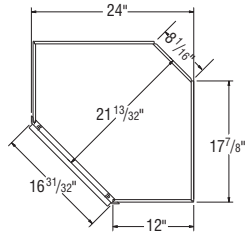
Diagonal Corner Wall Cabinets, 36" High, 12" & 15" Deep

NOTES ✓

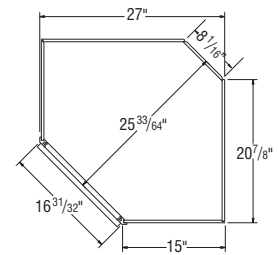
- ▶ Two adjustable shelves.
- ▶ Cabinets use standard natural maple interior, excluding white which has a white interior.
- ▶ All Diagonal Wall cabinets are reversible except for Arch styles.
- ▶ When installing, DC cabinets must be attached to at least one run of cabinets and both back walls.
- ▶ All full overlay doors are smaller to allow for proper door opening.



DC2436*
DC2736*



DC2436
TOP VIEW



DC2736
TOP VIEW

DESIGN SOLUTIONS

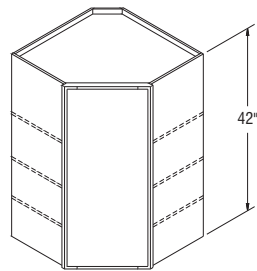
- ▶ Apply an End Panel Skin to create a flush end on the side of a Wall cabinet if installed at the end of a run for ease of Moulding installation.

*Specify L or R on Arch styles.

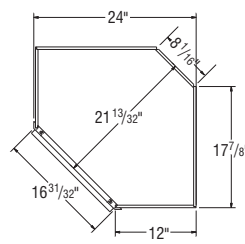
Diagonal Corner Wall Cabinets, 42" High, 12" & 15" Deep

NOTES ✓

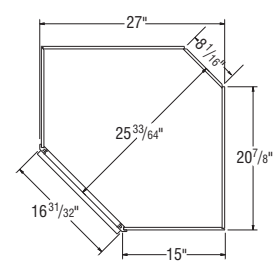
- ▶ Three adjustable shelves.
- ▶ Cabinets use standard natural maple interior, excluding white which has a white interior.
- ▶ All Diagonal Wall cabinets are reversible except for Arch styles.
- ▶ When installing, DC cabinets must be attached to at least one run of cabinets and both back walls.
- ▶ All full overlay doors are smaller to allow for proper door opening.
- ▶ When varying heights, make sure to also vary depths to allow moulding to lie against adjacent side of cabinet.



DC2442*
DC2742*



DC2442
TOP VIEW



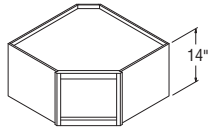
DC2742
TOP VIEW

DESIGN SOLUTIONS

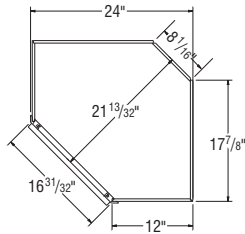
- ▶ Apply an End Panel Skin to create a flush end on the side of a Wall cabinet if installed at the end of a run for ease of Moulding installation.

*Specify L or R on Arch styles.

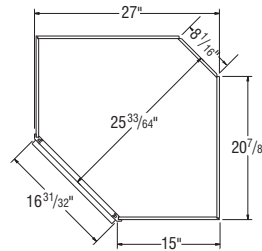
Diagonal Corner Open Wall Cabinets, 14" High, 12" & 15" Deep *New*



DCOL2414
DCOL2714



DCOL2414
TOP VIEW



DCOL2714
TOP VIEW

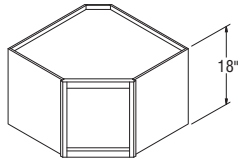
NOTES ✓

- ▶ Shelves not available in cabinets less than 24" in height.
- ▶ Cabinets include matching Aristex™ interior.
- ▶ When installing, DCOL cabinets must be attached to at least one run of cabinets and both back walls.

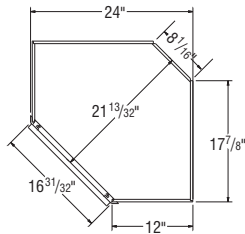
DESIGN SOLUTIONS

- ▶ Apply an End Panel Skin to create a flush end on the side of a Wall cabinet if installed at the end of a run for ease of Moulding installation.

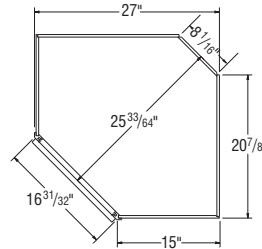
Diagonal Corner Open Wall Cabinets, 18" High, 12" & 15" Deep *New*



DCOL2418
DCOL2718



DCOL2418
TOP VIEW



DCOL2718
TOP VIEW

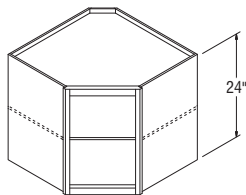
NOTES ✓

- ▶ Shelves not available in cabinets less than 24" in height.
- ▶ Cabinets include matching Aristex™ interior.
- ▶ When installing, DCOL cabinets must be attached to at least one run of cabinets and both back walls.

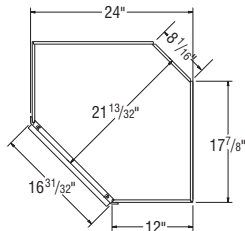
DESIGN SOLUTIONS

- ▶ Apply an End Panel Skin to create a flush end on the side of a Wall cabinet if installed at the end of a run for ease of Moulding installation.

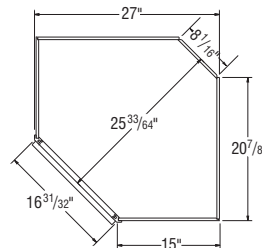
Diagonal Corner Open Wall Cabinets, 24" High, 12" & 15" Deep *New*



DCOL2424
DCOL2724



DCOL2424
TOP VIEW



DCOL2724
TOP VIEW

NOTES ✓

- ▶ One adjustable 3/4" thick matching Aristex™ shelf.
- ▶ Shelf is plywood in all construction platforms.
- ▶ Cabinets include matching Aristex™ interior.
- ▶ When installing, DCOL cabinets must be attached to at least one run of cabinets and both back walls.

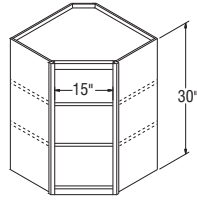
DESIGN SOLUTIONS

- ▶ Apply an End Panel Skin to create a flush end on the side of a Wall cabinet if installed at the end of a run for ease of Moulding installation.

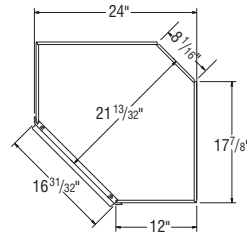
Diagonal Corner Open Wall Cabinets, 30" High, 12" & 15" Deep

NOTES ✓

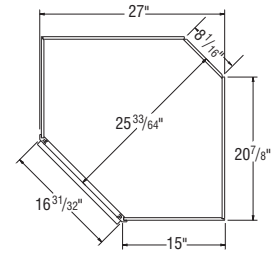
- ▶ Two adjustable 3/4" thick matching Aristex™ shelves.
- ▶ Shelves are plywood in all construction platforms.
- ▶ Cabinets include matching Aristex™ interior.
- ▶ If a door is desired for a 7/16" partial overlay style, use a W1830 size door.
- ▶ Full overlay door styles cannot be added.
- ▶ When installing, DCOL cabinets must be attached to at least one run of cabinets and both back walls.



DCOL2430
DCOL2730



DCOL2430
TOP VIEW



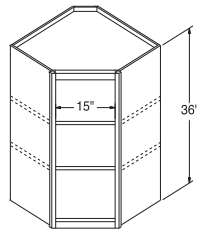
DCOL2730
TOP VIEW

DESIGN SOLUTIONS

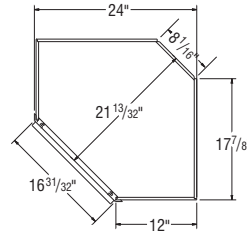
- ▶ Apply an End Panel Skin to create a flush end on the side of a Wall cabinet if installed at the end of a run for ease of Moulding installation.

NOTES ✓

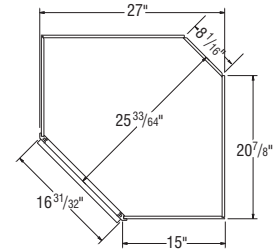
- ▶ Two adjustable 3/4" thick matching Aristex™ shelves.
- ▶ Shelves are plywood in all construction platforms.
- ▶ Cabinets include matching Aristex™ interior.
- ▶ If a door is desired for a 7/16" partial overlay style, use a W1836 size door.
- ▶ Full overlay door styles cannot be added.
- ▶ When installing, DCOL cabinets must be attached to at least one run of cabinets and both back walls.



DCOL2436
DCOL2736



DCOL2436
TOP VIEW



DCOL2736
TOP VIEW

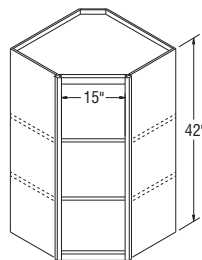
DESIGN SOLUTIONS

- ▶ Apply an End Panel Skin to create a flush end on the side of a Wall cabinet if installed at the end of a run for ease of Moulding installation.

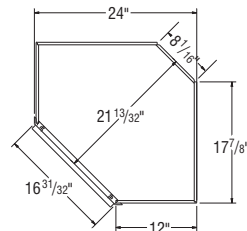
Diagonal Corner Open Wall Cabinets, 42" High, 12" & 15" Deep

NOTES ✓

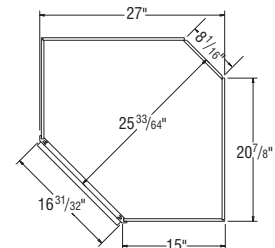
- ▶ Two adjustable 3/4" thick matching Aristex™ shelves.
- ▶ Shelves are plywood in all construction platforms.
- ▶ Cabinets include matching Aristex™ interior.
- ▶ If a door is desired for a 7/16" partial overlay style, use a W1842 size door.
- ▶ Full overlay door styles cannot be added.
- ▶ When installing, DCOL cabinets must be attached to at least one run of cabinets and both back walls.



DCOL2442
DCOL2742



DCOL2442 TOP VIEW

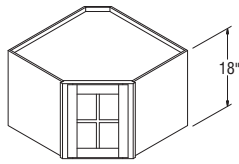


DCOL2742 TOP VIEW

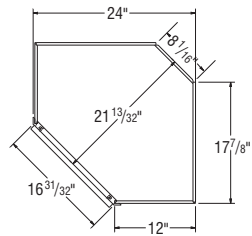
DESIGN SOLUTIONS

- ▶ Apply an End Panel Skin to create a flush end on the side of a Wall cabinet if installed at the end of a run for ease of Moulding installation.

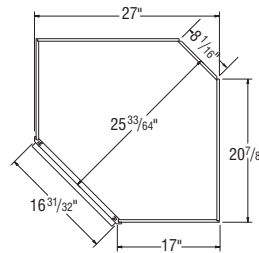
Diagonal Corner Wall Cabinets with Mullion Door, 18" High, 12" & 15" Deep *New*



DCMD2418
DCMD2718



DCMD2418
TOP VIEW



DCMD2718
TOP VIEW

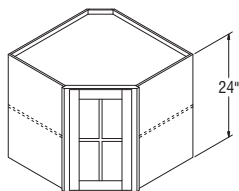
NOTES

- ▶ Shelves not available in cabinets less than 24" in height.
- ▶ Cabinets include installed, clear tempered glass, and matching Aristex™ interior.
- ▶ When installing, DCMD cabinets must be attached to at least one run of cabinets and both back walls.
- ▶ See page 28 for Standard and Shaker mullion door style availability and grid configurations.
- ▶ Mullion Door cabinets are not available in Teagan or VanWyke.

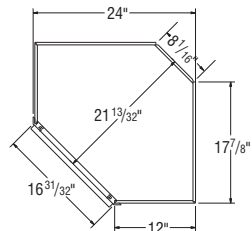
DESIGN SOLUTIONS

- ▶ Apply an End Panel Skin to create a flush end on the side of a Wall cabinet if installed at the end of a run for ease of Moulding installation.

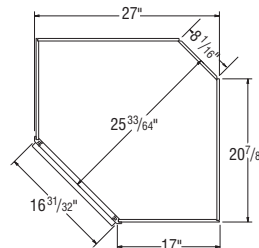
Diagonal Corner Wall Cabinets with Mullion Door, 24" High, 12" & 15" Deep *New*



DCMD2424
DCMD2724



DCMD2424
TOP VIEW



DCMD2724
TOP VIEW

NOTES

- ▶ One adjustable 3/4" thick matching Aristex™ shelf that aligns with door mullions on Standard mullions, but do not align on Shaker mullions.
- ▶ Shelf is plywood in all construction platforms.
- ▶ Cabinets include installed, clear tempered glass, and matching Aristex™ interior.
- ▶ When installing, DCMD cabinets must be attached to at least one run of cabinets and both back walls.
- ▶ See page 28 for Standard and Shaker mullion door style availability and grid configurations.
- ▶ Mullion Door cabinets are not available in Teagan or VanWyke.

DESIGN SOLUTIONS

- ▶ Apply an End Panel Skin to create a flush end on the side of a Wall cabinet if installed at the end of a run for ease of Moulding installation.

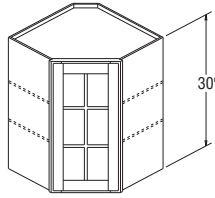
NOTES ✓

- ▶ Two adjustable 3/4" thick matching Aristex™ shelves align with door mullions on Standard mullions, but do not align on Shaker mullions.
- ▶ Shelves are plywood in all construction platforms.
- ▶ Cabinets include installed, clear tempered glass, and matching Aristex™ interior.
- ▶ All Diagonal Wall cabinets are reversible except for Arch styles.
- ▶ When installing, DCMD cabinets must be attached to at least one run of cabinets and both back walls.
- ▶ All full overlay doors are smaller to allow for proper door opening.
- ▶ See page 28 for Standard and Shaker mullion door style availability and grid configurations.
- ▶ Mullion Door cabinets are not available in Teagan or VanWyke.

DESIGN SOLUTIONS

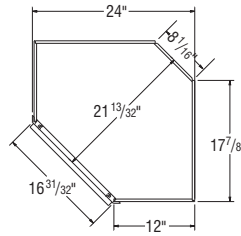
- ▶ Apply an End Panel Skin to create a flush end on the side of a Wall cabinet if installed at the end of a run for ease of Moulding installation.
- ▶ For complementary Wall Mullion Door cabinets in Teagan, order as Winstead Maple, as Teagan features a slab door design.

Diagonal Corner Wall Cabinets with Mullion Door, 30" High, 12" & 15" Deep

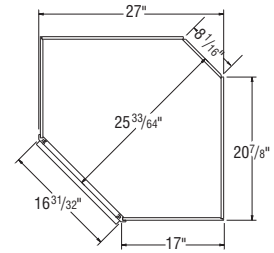


DCMD2430*
DCMD2730*

*Specify L or R on Arch styles.



DCMD2430
TOP VIEW



DCMD2730
TOP VIEW

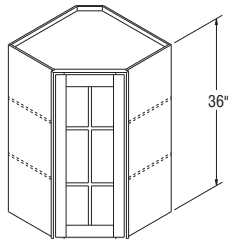
NOTES ✓

- ▶ Two adjustable 3/4" thick matching Aristex™ shelves align with door mullions on Standard mullions, but do not align on Shaker mullions.
- ▶ Shelves are plywood in all construction platforms.
- ▶ Cabinets include installed, clear tempered glass, and matching Aristex™ interior.
- ▶ All Diagonal Wall cabinets are reversible except for Arch styles.
- ▶ When installing, DCMD cabinets must be attached to at least one run of cabinets and both back walls.
- ▶ All full overlay doors are smaller to allow for proper door opening.
- ▶ See page 28 for Standard and Shaker mullion door style availability and grid configurations.
- ▶ Mullion Door cabinets are not available in Teagan or VanWyke.

DESIGN SOLUTIONS

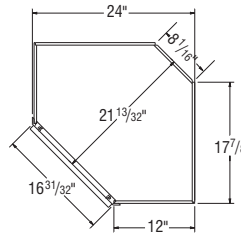
- ▶ Apply an End Panel Skin to create a flush end on the side of a Wall cabinet if installed at the end of a run for ease of Moulding installation.
- ▶ For complementary Wall Mullion Door cabinets in Teagan, order as Winstead Maple, as Teagan features a slab door design.

Diagonal Corner Wall Cabinets with Mullion Door, 36" High, 12" & 15" Deep

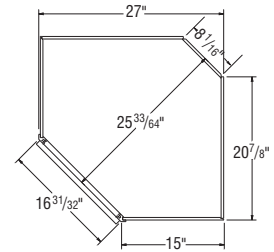


DCMD2436*
DCMD2736*

*Specify L or R on Arch styles.

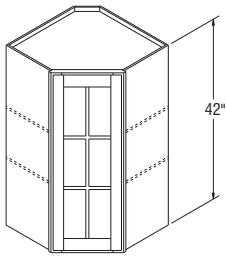


DCMD2436
TOP VIEW



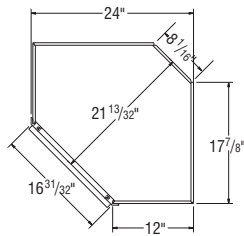
DCMD2736
TOP VIEW

Diagonal Corner Wall Cabinets with Mullion Door, 42" High, 12" & 15" Deep

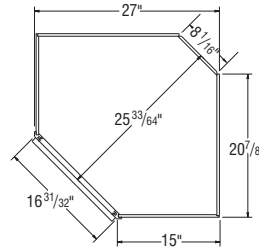


DCMD2442*
DCMD2742*

*Specify L or R on Arch styles.



DCMD2442
TOP VIEW



DCMD2742
TOP VIEW

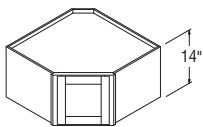
NOTES ✓

- ▶ Two adjustable 3/4" thick matching Aristex™ shelves align with door mullions on Standard mullions, but do not align on Shaker mullions.
- ▶ Shelves are plywood in all construction platforms.
- ▶ Cabinets include installed, clear tempered glass, and matching Aristex™ interior.
- ▶ All Diagonal Wall cabinets are reversible except for Arch styles.
- ▶ When installing, DCMD cabinets must be attached to at least one run of cabinets and both back walls.
- ▶ All full overlay doors are smaller to allow for proper door opening.
- ▶ See page 28 for Standard and Shaker mullion door style availability and grid configurations.
- ▶ Mullion Door cabinets are not available in Teagan or VanWyke.

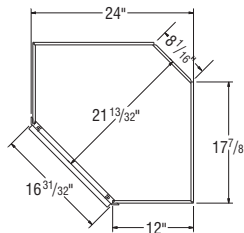
DESIGN SOLUTIONS

- ▶ Apply an End Panel Skin to create a flush end on the side of a Wall cabinet if installed at the end of a run for ease of Moulding installation.
- ▶ For complementary Wall Mullion Door cabinets in Teagan, order as Winstead Maple, as Teagan features a slab door design.

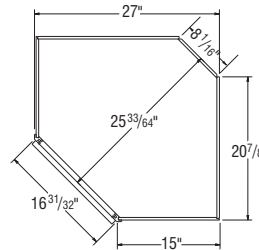
Diagonal Corner Wall Cabinets w/Door Prepped for Glass, 14" High, 12" & 15" Deep *New*



DCPG2414
DCPG2714



DCPG2414
TOP VIEW



DCPG2714
TOP VIEW

NOTES ✓

- ▶ Shelves not available in cabinets less than 24" in height.
- ▶ Cabinets include matching Aristex™ interior and clips to install glass (glass not included).
- ▶ Diagonal Wall Cabinets are reversible except for Arch styles.
- ▶ When installing, DCPG cabinets must be attached to at least one run of cabinets and both back walls.
- ▶ All full overlay doors are smaller to allow for proper door opening.
- ▶ Wall Prepped for Glass cabinets are not available in Augusta, Teagan, or VanWyke.

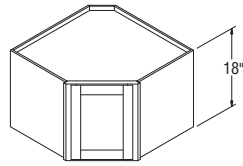
DESIGN SOLUTIONS

- ▶ Apply an End Panel Skin to create a flush end on the side of a Wall cabinet if installed at the end of a run for ease of Moulding installation.
- ▶ For complementary Wall Prepped for Glass cabinets in Teagan, order as Winstead Maple, as Teagan features a slab door design.

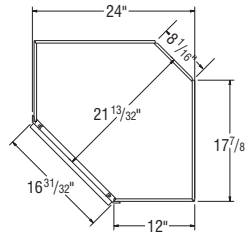
Diagonal Corner Wall Cabinets w/Door Prepped for Glass, 18" High, 12" & 15" Deep *New*

NOTES ✓

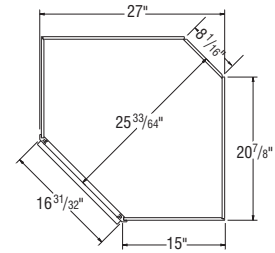
- ▶ Cabinets include matching Aristex™ interior and clips to install glass (glass not included).
- ▶ Diagonal Wall Cabinets are reversible except for Arch styles.
- ▶ All full overlay doors are smaller to allow for proper door opening.
- ▶ When installing, DCPG cabinets must be attached to at least one run of cabinets and both back walls.
- ▶ Wall Prepped for Glass cabinets are not available in Augusta, Teagan, or VanWyke.



DCPG2418
DCPG2718



DCPG2418
TOP VIEW



DCPG2718
TOP VIEW

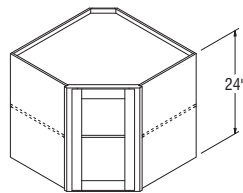
DESIGN SOLUTIONS

- ▶ Apply an End Panel Skin to create a flush end on the side of a Wall cabinet if installed at the end of a run for ease of Moulding installation.
- ▶ For complementary Wall Prepped for Glass cabinets in Teagan, order as Winstead Maple, as Teagan features a slab door design.

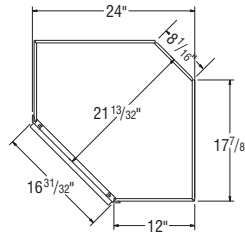
NOTES ✓

Diagonal Corner Wall Cabinets w/Door Prepped for Glass, 24" High, 12" & 15" Deep *New*

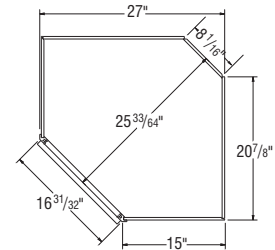
- ▶ Cabinets include matching Aristex™ interior and clips to install glass (glass not included).
- ▶ Shelf is plywood in all construction platforms.
- ▶ Diagonal Wall Cabinets are reversible except for Arch styles.
- ▶ All full overlay doors are smaller to allow for proper door opening.
- ▶ When installing, DCPG cabinets must be attached to at least one run of cabinets and both back walls.
- ▶ Wall Prepped for Glass cabinets are not available in Augusta, Teagan, or VanWyke.



DCPG2424
DCPG2724



DCPG2424
TOP VIEW

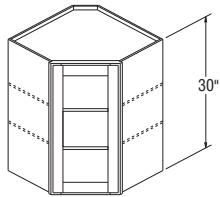


DCPG2724
TOP VIEW

DESIGN SOLUTIONS

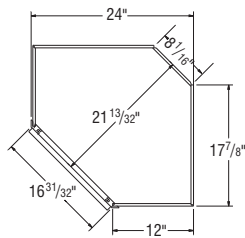
- ▶ Apply an End Panel Skin to create a flush end on the side of a Wall cabinet if installed at the end of a run for ease of Moulding installation.
- ▶ For complementary Wall Prepped for Glass cabinets in Teagan, order as Winstead Maple, as Teagan features a slab door design.

Diagonal Corner Wall Cabinets w/Door Prepped for Glass, 30" High, 12" & 15" Deep

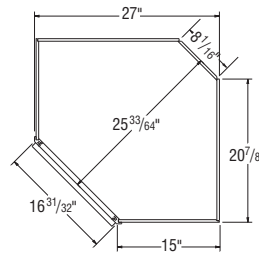


DCPG2430*
DCPG2730*

*Specify L or R on Arch styles.



DCPG2430
TOP VIEW



DCPG2730
TOP VIEW

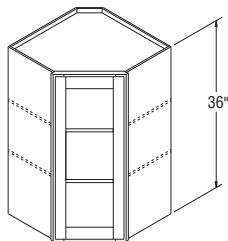
NOTES

- ▶ Cabinets include matching Aristex™ interior, two adjustable 3/4" thick matching Aristex™ shelves, and clips to install glass (glass not included).
- ▶ Shelves are plywood in all construction platforms.
- ▶ All Diagonal Wall cabinets are reversible except for Arch styles
- ▶ When installing, DCPG cabinets must be attached to at least one run of cabinets and both back walls.
- ▶ All full overlay doors are smaller to allow for proper door opening.
- ▶ Wall Prepped for Glass cabinets are not available in Augusta, Teagan, or VanWyke.

DESIGN SOLUTIONS

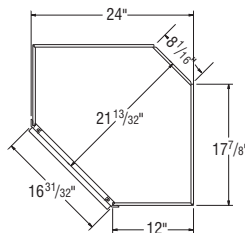
- ▶ Apply an End Panel Skin to create a flush end on the side of a Wall cabinet if installed at the end of a run for ease of Moulding installation.
- ▶ For complementary Wall Prepped for Glass cabinets in Teagan, order as Winstead Maple, as Teagan features a slab door design.

Diagonal Corner Wall Cabinets w/Door Prepped for Glass, 36" High, 12" & 15" Deep

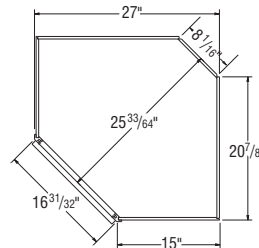


DCPG2436*
DCPG2736*

*Specify L or R on Arch styles.



DCPG2436
TOP VIEW



DCPG2736
TOP VIEW

NOTES

- ▶ Cabinets include matching Aristex™ interior, two adjustable 3/4" thick matching Aristex™ shelves, and clips to install glass (glass not included).
- ▶ Shelves are plywood in all construction platforms.
- ▶ All Diagonal Wall cabinets are reversible except for Arch styles.
- ▶ When installing, DCPG cabinets must be attached to at least one run of cabinets and both back walls.
- ▶ All full overlay doors are smaller to allow for proper door opening.
- ▶ Wall Prepped for Glass cabinets are not available in Augusta, Teagan, or VanWyke.

DESIGN SOLUTIONS

- ▶ Apply an End Panel Skin to create a flush end on the side of a Wall cabinet if installed at the end of a run for ease of Moulding installation.
- ▶ For complementary Wall Prepped for Glass cabinets in Teagan, order as Winstead Maple, as Teagan features a slab door design.

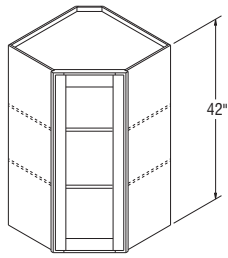
NOTES ✓

- ▶ Cabinets include matching Aristex™ interior, two adjustable ¾" thick matching Aristex™ shelves, and clips to install glass (glass not included).
- ▶ Shelves are plywood in all construction platforms.
- ▶ All Diagonal Wall cabinets are reversible except for Arch styles.
- ▶ When installing, DCPG cabinets must be attached to at least one run of cabinets and both back walls.
- ▶ All full overlay doors are smaller to allow for proper door opening.
- ▶ Wall Prepped for Glass cabinets are not available in Augusta, Teagan, or VanWyke.

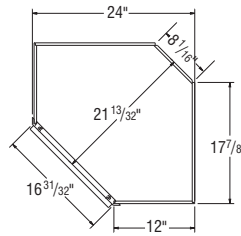
DESIGN SOLUTIONS

- ▶ Apply an End Panel Skin to create a flush end on the side of a Wall cabinet if installed at the end of a run for ease of Moulding installation.
- ▶ For complementary Wall Prepped for Glass cabinets in Teagan, order as Winstead Maple, as Teagan features a slab door design.

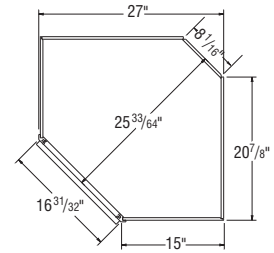
Diagonal Corner Wall Cabinets w/Door Prepped for Glass, 42" High, 12" & 15" Deep



DCPG2442*
DCPG2742*



DCPG2442
TOP VIEW



DCPG2742
TOP VIEW

*Specify L or R on Arch styles.

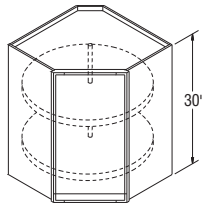
NOTES ✓

- ▶ Includes two white Roto shelves. Each shelf holds 30 lbs.
- ▶ 18" diameter shelves.
- ▶ Doors are reversible except for Arch styles.
- ▶ Cabinets must be attached to at least one run of cabinets and both back walls.

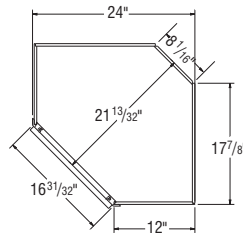
DESIGN SOLUTIONS

- ▶ Apply an End Panel Skin to create a flush end on the side of a Wall cabinet if installed at the end of a run for ease of Moulding installation.

Diagonal Corner Roto Wall Cabinet, 30" High, 12" Deep



DCR2430*

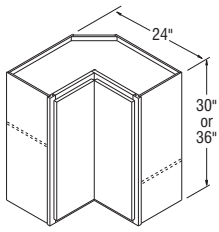


TOP VIEW

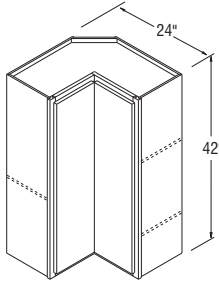
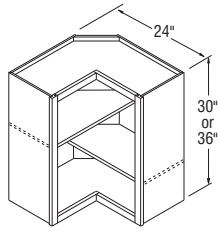
*Specify L or R on Arch styles.



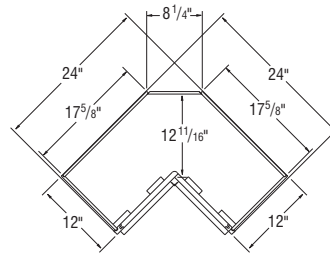
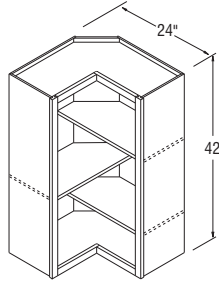
Wall Easy Reach Cabinet, 30", 36", or 42" High, 12" Deep



WER2430*
WER2436*



WER2442*



TOP VIEW

NOTES ✓

- ▶ WER2430 and WER2436 include two adjustable shelves.
- ▶ WER2442 includes three adjustable shelves.
- ▶ Doors are reversible except for Arch styles.
- ▶ One knuckle hinge door.
- ▶ Includes magnetic catch.
- ▶ Cabinets must be attached to at least one run of cabinets and both back walls.
- ▶ Soft Close Hinges are not available in Select and APC Construction.

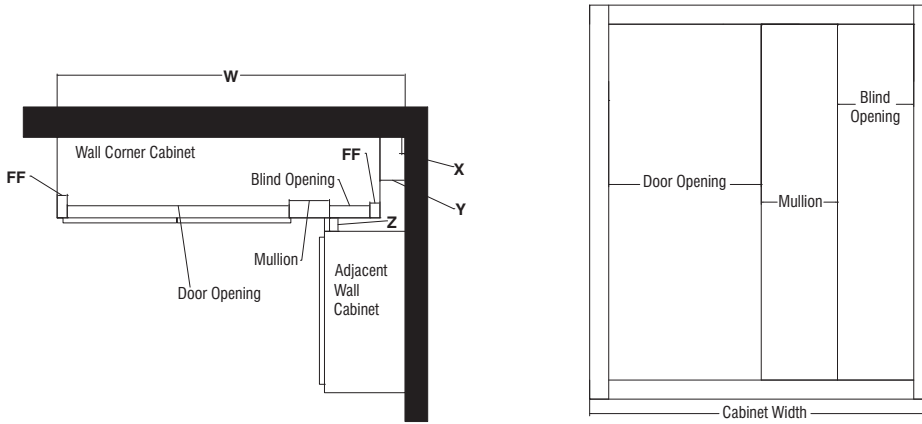
DESIGN SOLUTIONS

- ▶ Apply an End Panel Skin to create a flush end on the side of a Wall cabinet if installed at the end of a run for ease of Moulding installation.



*Specify L or R on Arch styles.

Wall Corner Cabinet Installation Charts



Full Overlay Square Corner Wall Cabinet Information

Full Overlay Styles	Actual Cabinet Width	X		Y	Z		W	
		Min. Pull	Min. Pull w/Hardware	Max. Pull	Min. Filler Required	Min. Filler Required w/Hardware	Min. Pull From Wall To End of Cabinet	Max Pull From Wall To End of Cabinet
SC24_	24"	1"	2½"	3¾"	1"	2½"	25"	27¾"
SC30_	30"	1"	2½"	3¾"	1"	2½"	31"	33¾"
SC33_	33"	1"	2½"	3¾"	1"	2½"	34"	36¾"
SC36_	36"	1"	2½"	3¾"	1"	2½"	37"	39¾"
SC42_	42"	1"	2½"	3¾"	1"	2½"	43"	45¾"
SC48_	48"	1"	2½"	3¾"	1"	2½"	49"	51¾"

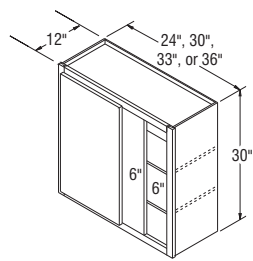
7/16" Overlay Square Corner Wall Cabinet Information

7/16" Overlay Styles	Actual Cabinet Width	X		Y	Z		W	
		Min. Pull	Min. Pull w/Hardware	Max. Pull	Min. Filler Required	Min. Filler Required w/Hardware	Min. Pull From Wall To End of Cabinet	Max Pull From Wall To End of Cabinet
SC24_	24"	½"	2"	3¾"	½"	2"	24½"	27¾"
SC30_	30"	½"	2"	3¾"	½"	2"	30½"	33¾"
SC33_	33"	½"	2"	3¾"	½"	2"	33½"	36¾"
SC36_	36"	½"	2"	3¾"	½"	2"	36½"	39¾"
SC42_	42"	½"	2"	3¾"	½"	2"	42½"	45¾"
SC48_	48"	½"	2"	3¾"	½"	2"	48½"	51¾"

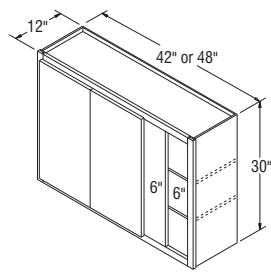
Square Corner Wall Door and Opening Sizes

SKU	7/16" Overlay Door	Full Overlay Door	Door Opening
SC2430	9⅞" x 27⅞"	11½" x 29½"	9" x 27"
SC3030	15⅞" x 27⅞"	17½" x 29½"	15" x 27"
SC3330	18⅞" x 27⅞"	20½" x 29½"	18" x 27"
SC3630	21⅞" x 27⅞"	23½" x 29½"	21" x 27"
SC4230B	13⅞" x 27⅞"	14⅞" x 29½"	12" x 27"
SC4830B	16⅞" x 27⅞"	17⅞" x 29½"	15" x 27"
SC2436	9⅞" x 33⅞"	11½" x 35½"	9" x 33"
SC3036	15⅞" x 33⅞"	17½" x 35½"	15" x 33"
SC3336	18⅞" x 33⅞"	20½" x 35½"	18" x 33"
SC3636	21⅞" x 33⅞"	23½" x 35½"	21" x 33"
SC4236B	13⅞" x 33⅞"	14⅞" x 35½"	12" x 33"
SC4836B	16⅞" x 33⅞"	17⅞" x 35½"	15" x 33"
SC2442	9⅞" x 39⅞"	11½" x 41½"	9" x 39"
SC3042	15⅞" x 39⅞"	17½" x 41½"	15" x 39"
SC3342	18⅞" x 39⅞"	20½" x 41½"	18" x 39"
SC3642	21⅞" x 39⅞"	23½" x 41½"	21" x 39"
SC4242B	13⅞" x 39⅞"	14⅞" x 41½"	12" x 39"
SC4842B	16⅞" x 39⅞"	17⅞" x 41½"	15" x 39"

Square Corner Wall Cabinets, 30" High, 12" Deep

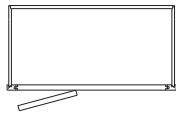


SC2430*
SC3030*
SC3330*
SC3630*

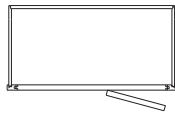


SC4230B*
SC4830B*

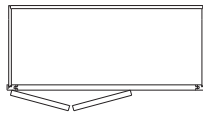
*Specify L or R blind designation on all Arch styles.



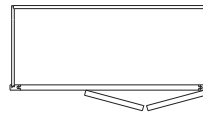
TOP VIEW
SC (RIGHT)



TOP VIEW
SC (LEFT)



TOP VIEW
SC (RIGHT)



TOP VIEW
SC (LEFT)

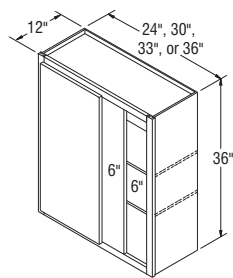
NOTES ✓

- ▶ Two adjustable shelves.
- ▶ 3" Filler is included. Filler Overlays shipped unattached with Brellin, Briarcliff II, Durham, Eastland, Overton, and Wentworth styles.
- ▶ Hinging determines location of the blind. Door attaches to blind panel.
- ▶ Cabinets are reversible, except for Arch styles.
- ▶ Cover panel shipped with cabinet for field installation to cover 6" blind opening.
- ▶ Reference Installation Charts for proper sizing identification, see page 80.

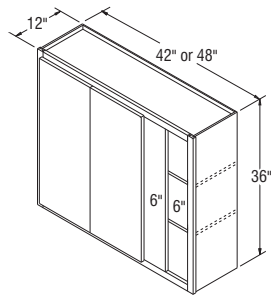
DESIGN SOLUTIONS

- ▶ When a cabinet is "pulled," it will use proportionally more wall space. For example, a 30" wide Wall cabinet pulled 2" will use 32" of space.
- ▶ Blind side of Wall Corner cabinets cannot be installed next to a Range Hood or Microwave Shelf due to door interference.

Square Corner Wall Cabinets, 36" High, 12" Deep

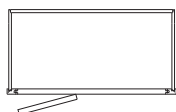


SC2436*
SC3036*
SC3336*
SC3636*

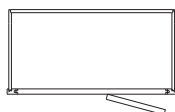


SC4236B*
SC4836B*

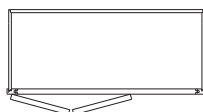
*Specify L or R blind designation on all Arch styles.



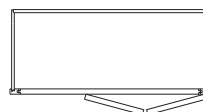
TOP VIEW
SC (RIGHT)



TOP VIEW
SC (LEFT)



TOP VIEW
SC (RIGHT)



TOP VIEW
SC (LEFT)

NOTES ✓

- ▶ Two adjustable shelves.
- ▶ 3" Filler is included. Filler Overlays shipped unattached with Brellin, Briarcliff II, Durham, Eastland, Overton, and Wentworth styles.
- ▶ Hinging determines location of the blind. Door attaches to blind panel.
- ▶ Cabinets are reversible, except for Arch styles.
- ▶ Cover panel shipped with cabinet for field installation to cover 6" blind opening.
- ▶ Reference Installation Charts for proper sizing identification, see page 80.

DESIGN SOLUTIONS

- ▶ When a cabinet is "pulled," it will use proportionally more wall space. For example, a 30" wide Wall cabinet pulled 2" will use 32" of space.
- ▶ Blind side of Wall Corner cabinets cannot be installed next to a Range Hood or Microwave Shelf due to door interference.

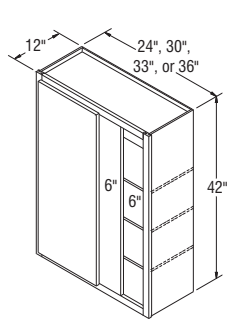
Square Corner Wall Cabinets, 42" High, 12" Deep

NOTES ✓

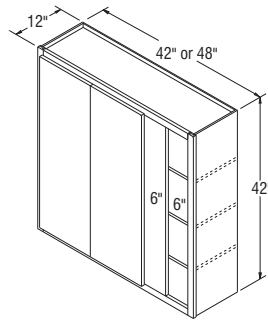
- ▶ Three adjustable shelves.
- ▶ 3" Filler is included. Filler Overlays shipped unattached with Brellin, Briarcliff II, Durham, Eastland, Overton, and Wentworth styles.
- ▶ Hinging determines location of the blind. Door attaches to blind panel.
- ▶ Cabinets are reversible, except for Arch styles.
- ▶ Cover panel shipped with cabinet for field installation to cover 6" blind opening.
- ▶ Reference Installation Charts for proper sizing identification, see page 80.

DESIGN SOLUTIONS

- ▶ When a cabinet is "pulled," it will use proportionally more wall space. For example, a 30" wide Wall cabinet pulled 2" will use 32" of space.
- ▶ Blind side of Wall Corner cabinets cannot be installed next to a Range Hood or Microwave Shelf due to door interference.

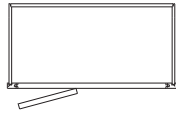


SC2442*
SC3042*
SC3342*
SC3642*

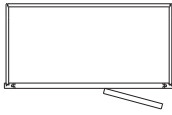


SC4242B*
SC4842B*

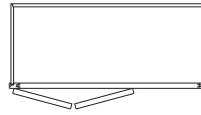
*Specify L or R blind designation on all Arch styles.



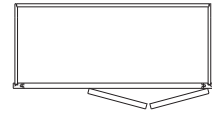
TOP VIEW
SC (RIGHT)



TOP VIEW
SC (LEFT)



TOP VIEW
SC (RIGHT)

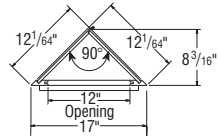
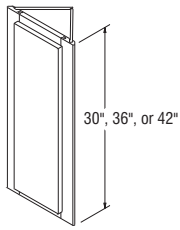


TOP VIEW
SC (LEFT)

Wall End Cabinets, Single Door, 30", 36", and 42" High, 12" Deep

NOTES ✓

- ▶ WEC1242 includes three adjustable shelves; WEC1236 and WEC1230 include two adjustable shelves.
- ▶ Cabinet backs will not match front.



TOP VIEW

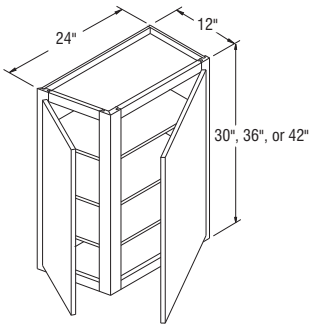
WEC1230*
WEC1236*
WEC1242*

*Specify L or R for all Arch styles.

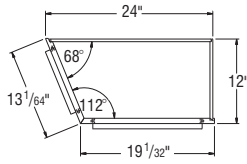
Wall End Cabinets, Double Door, 30", 36", and 42" High, 12" Deep

NOTES ✓

- ▶ 42" high cabinets include three adjustable shelves; 36" and 30" cabinets include two adjustable shelves.



ANGLE - LEFT
HINGE - RIGHT

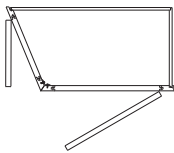


TOP VIEW

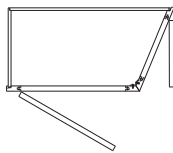
WECL2430*
WECL2430*
WECL2436*

WECL2436*
WECL2442*
WECL2442*

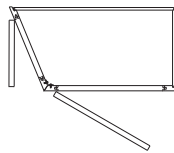
*Specify L or R to indicate hinging for front door on all styles.



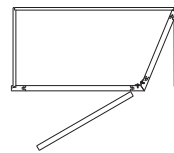
TOP VIEW
ANGLE - LEFT
HINGE - RIGHT



TOP VIEW
ANGLE - RIGHT
HINGE - LEFT



TOP VIEW
ANGLE - LEFT
HINGE - LEFT



TOP VIEW
ANGLE - RIGHT
HINGE - RIGHT

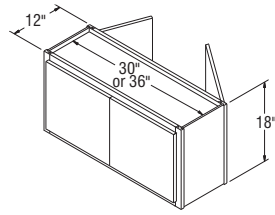
Peninsula Wall Cabinets, 18" High, 12" Deep

NOTES ✓

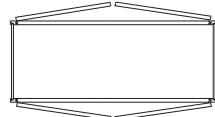
- ▶ Shelves not available in cabinets less than 24" in height.

DESIGN SOLUTIONS

- ▶ Apply an End Panel Skin to create a flush end on the side of a Wall cabinet if installed at the end of a run for ease of Moulding installation.



PW3018B
PW3618B



TOP VIEW

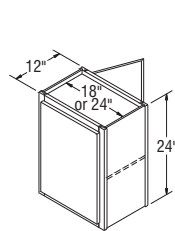
NOTES ✓

- ▶ One adjustable shelf.
- ▶ Single door reversible.

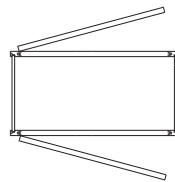
DESIGN SOLUTIONS

- ▶ Apply an End Panel Skin to create a flush end on the side of a Wall cabinet if installed at the end of a run for ease of Moulding installation.

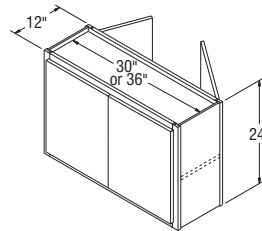
Peninsula Wall Cabinets, 24" High, 12" Deep



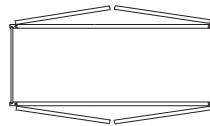
PW1824
PW2424



TOP VIEW

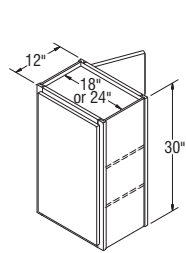


PW3024B
PW3624B

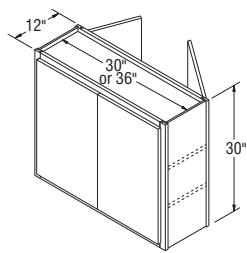


TOP VIEW

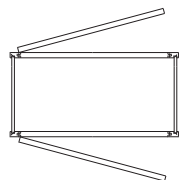
Peninsula Wall Cabinets, 30" High, 12" Deep



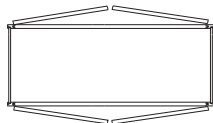
PW1830
PW2430



PW3030B
PW3630B



TOP VIEW



TOP VIEW

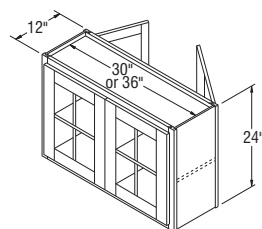
NOTES ✓

- ▶ Two adjustable shelves.
- ▶ Single door reversible.

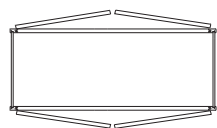
DESIGN SOLUTIONS

- ▶ Apply an End Panel Skin to create a flush end on the side of a Wall cabinet if installed at the end of a run for ease of Moulding installation.

Peninsula Wall Cabinets with 4 Mullion Doors, 24" High, 12" Deep



PWMD3024B
PWMD3624B



TOP VIEW

NOTES ✓

- ▶ One adjustable $\frac{3}{4}$ " thick matching Aristex™ shelf aligns with door mullions on Standard mullions, but does not align on Shaker mullions.
- ▶ Cabinets include installed clear tempered glass and matching Aristex™ interior.
- ▶ All doors are mullion.
- ▶ Backs of face frames are unfinished. See page 28 for Standard and Shaker mullion door style availability and grid configurations.
- ▶ Peninsula Mullion Door cabinets are not available in Teagan or VanWyke.

DESIGN SOLUTIONS

- ▶ Apply an End Panel Skin to create a flush end on the side of a Wall cabinet if installed at the end of a run for ease of Moulding installation.
- ▶ For complementary Peninsula Wall Mullion Door cabinets in Teagan, order as Winstead Maple, as Teagan features a slab door design.

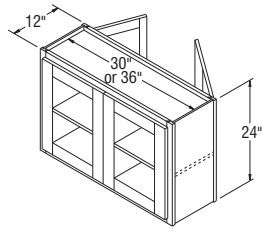
Peninsula Wall Cabinets with 4 Doors Prepped for Glass, 24" High, 12" Deep

NOTES ✓

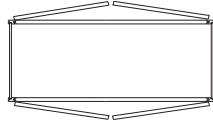
- ▶ Cabinets include matching Aristex™ interior, one adjustable ¾" thick shelf, and clips to install glass (glass not included).
- ▶ Peninsula Wall Prepped for Glass cabinets are not available in Augusta, Teagan, or VanWyke.

DESIGN SOLUTIONS

- ▶ Apply an End Panel Skin to create a flush end on the side of a Wall cabinet if installed at the end of a run for ease of Moulding installation.
- ▶ For complementary Peninsula Wall Prepped for Glass cabinets in Teagan, order as Winstead Maple, as Teagan features a slab door design.



PWPG3024B
PWPG3624B



TOP VIEW