

Universal Design Notes

32½" high cabinets are designed to comply with ADA (Americans with Disabilities Act) requirements of a 34" high overall counter height, including a 1½" countertop.

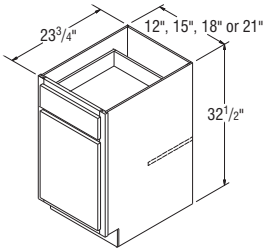
Available in the following styles:

- ▶ Avalon Maple
- ▶ Benton Birch
- ▶ Brellin Birch
- ▶ Landen Maple
- ▶ Oakland Oak
- ▶ Saybrooke Birch
- ▶ Sinclair Birch
- ▶ Westbury Oak
- ▶ Winstead Maple

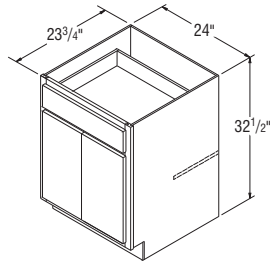
Base Cabinets, 32 ½" High

NOTES ✓

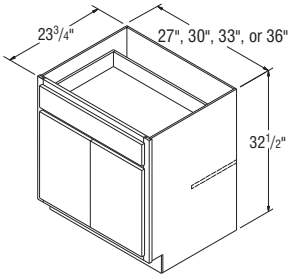
- ▶ Includes one ¾" thick half-depth adjustable shelf.



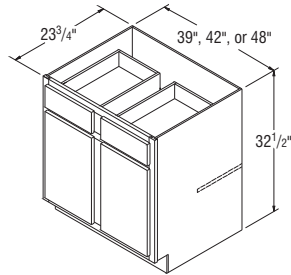
B1232.5
B1532.5
B1832.5
B2132.5



B2432.5DD



B2732.5B
B3032.5B
B3332.5B
B3632.5B

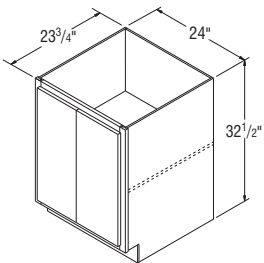


B3932.5
B4232.5
B4832.5

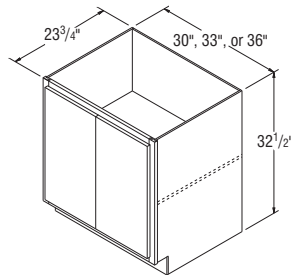
Base Cabinets with Full Height Doors, 32 ½" High

NOTES ✓

- ▶ Includes one ¾" thick full-depth adjustable shelf.



B2432.5DDFH

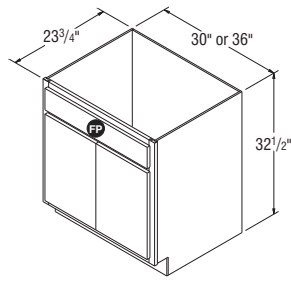


B3032.5FHB
B3332.5FHB
B3632.5FHB

NOTES ✓

- ▶ FP = False Panel.
- ▶ It may be necessary to modify the corner braces with some sink applications.
- ▶ Vanity interiors are not drilled for shelf clip holes, nor do they include a shelf.

Sink Base Cabinets, 32 1/2" High

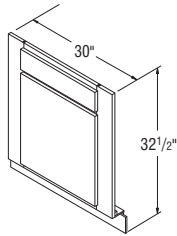


SB3032.5B
SB3632.5B

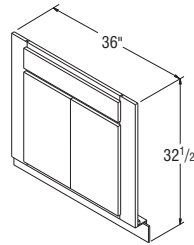
NOTES ✓

- ▶ FP = False Panel.
- ▶ Sink Base Floor included with all units.
- ▶ Trimmable 3" each side.

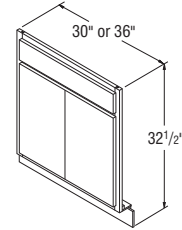
Sink Fronts, 32 1/2" High



PARTIAL OVERLAY
SF3032.5



PARTIAL OVERLAY
SF3632.5B

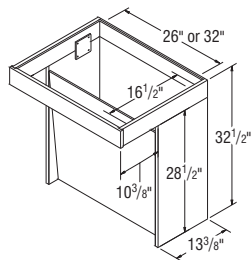


FULL OVERLAY
SF3032.5B-SF3632.5B

NOTES ✓

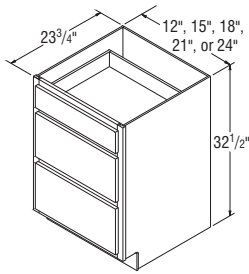
- ▶ 26" and 32" wide and 16 1/2" deep space for sink opening.
- ▶ Shipped unassembled.
- ▶ Removable front panel.
- ▶ Do not use or install as a freestanding unit.
- ▶ It may be necessary to modify the corner braces with some sink applications.
- ▶ Front panel does not include a door style profile.
- ▶ Not available in All Plywood Construction.

Sink Unit Cabinets with Front Panel, 32 1/2" High



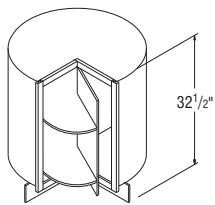
SU3032.5
SU3632.5

Three Drawer Base Cabinets, 32 1/2" High

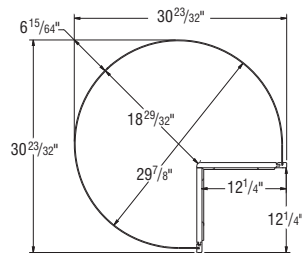


DB1232.5
DB1532.5
DB1832.5
DB2132.5
DB2432.5

Square Corner Roto Base Cabinet, 32 1/2" High



SCR3632.5



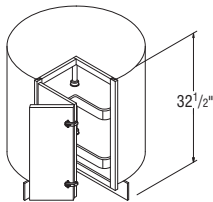
TOP VIEW

NOTES ✓

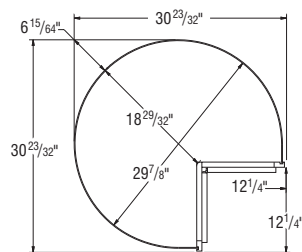
- ▶ Two rotating 27" diameter white shelves with a 60 lb. load capacity per shelf.
- ▶ One rotating door.
- ▶ Nominal gap of 1/4" on all sides of door.
- ▶ APC charges do not apply to SCR cabinets.
- ▶ Soft Close Hinges are not available in Select and APC Construction.
- ▶ When ordering APC Construction, top and bottom will utilize particleboard, but drum material does not change.



Base Lazy Susan Cabinet, 32 1/2" High



BLS3632.5*



TOP VIEW

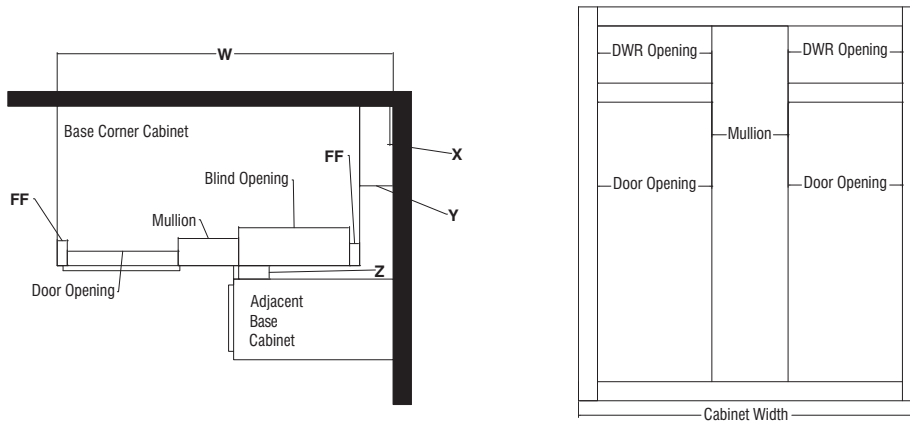
NOTES ✓

- ▶ One knuckle hinge door.
- ▶ Includes magnetic catch.
- ▶ Two 27" diameter rotating plastic white shelves that hold 60 lbs. per shelf.
- ▶ APC charges do not apply to BLS cabinets.
- ▶ Soft Close Hinges are not available in Select and APC Construction.



*Specify L or R for full overlay styles.

Universal Base Corner Cabinet Information



Full Overlay Universal Base Corner Cabinet Information

Full Overlay Styles	Actual Cabinet Width	X		Y	Z		W	
		Min. Pull	Min. Pull w/Hardware	Max. Pull	Min. Filler Required	Min. Filler Required w/Hardware	Min. Pull From Wall To End of Cabinet	Max Pull From Wall To End of Cabinet
BC3632.5	27"	9 ³ / ₄ "	11 ¹ / ₄ "	12 ¹ / ₂ "	1"	2 ¹ / ₂ "	36 ³ / ₄ "	39 ¹ / ₂ "
BC3932.5	30"	6 ³ / ₄ "	8 ¹ / ₄ "	12 ¹ / ₂ "	1"	2 ¹ / ₂ "	36 ³ / ₄ "	42 ¹ / ₂ "
BC4232.5	36"	3 ³ / ₄ "	5 ¹ / ₄ "	9 ¹ / ₂ "	1"	2 ¹ / ₂ "	39 ³ / ₄ "	45 ¹ / ₂ "
BC4532.5	42"	³ / ₄ "	2 ¹ / ₄ "	6 ¹ / ₂ "	1"	2 ¹ / ₂ "	42 ³ / ₄ "	48 ¹ / ₂ "
BC4832.5	45"	0"	³ / ₄ "	5"	1"	2 ¹ / ₂ "	45"	50"

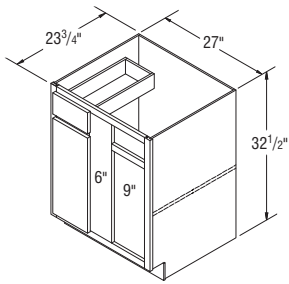
7/16" Overlay Universal Base Corner Cabinet Information

7/16" Overlay Styles	Actual Cabinet Width	X		Y	Z		W	
		Min. Pull	Min. Pull w/Hardware	Max. Pull	Min. Filler Required	Min. Filler Required w/Hardware	Min. Pull From Wall To End of Cabinet	Max Pull From Wall To End of Cabinet
BC3632.5	27"	9 ³ / ₄ "	10 ³ / ₄ "	12 ¹ / ₂ "	¹ / ₂ "	2"	36 ³ / ₄ "	39 ¹ / ₂ "
BC3932.5	30"	6 ¹ / ₄ "	7 ³ / ₄ "	12 ¹ / ₂ "	¹ / ₂ "	2"	36 ¹ / ₄ "	42 ¹ / ₂ "
BC4232.5	36"	3 ³ / ₄ "	4 ³ / ₄ "	9 ¹ / ₂ "	¹ / ₂ "	2"	39 ³ / ₄ "	45 ¹ / ₂ "
BC4532.5	42"	¹ / ₄ "	1 ³ / ₄ "	6 ¹ / ₂ "	¹ / ₂ "	2"	42 ¹ / ₄ "	48 ¹ / ₂ "
BC4832.5	45"	0"	¹ / ₄ "	5"	¹ / ₂ "	2"	45"	50"
BC4832.5	45"	0"	¹ / ₄ "	5"	¹ / ₂ "	2"	45"	50"

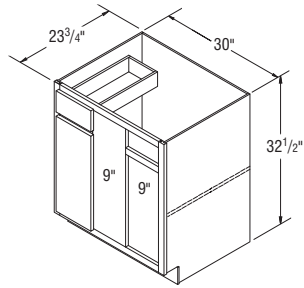
Base Corner Cabinets, 32 1/2" High, 23 3/4" Deep

NOTES ✓

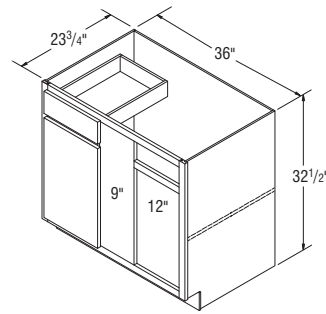
- ▶ Includes one 3/4" thick full-depth adjustable shelf.
- ▶ All Base Corner Cabinets are reversible from left blind to right blind.
- ▶ 3" filler is included with all Base Corner Cabinets and shipped unattached. Brellin comes with Filler and Overlay.
- ▶ To ensure proper door/drawer clearance we recommend you do not install appliances next to the blind.
- ▶ Adjoining run of cabinets will cover blind opening.
- ▶ One door and one drawer installed on each Base Corner Cabinet.
- ▶ Base Corner Cabinets are designed to use same amount of wall space designated in the SKU nomenclature, and may be pulled up to maximum amount on chart to accommodate odd dimensions in a kitchen.
- ▶ For minimum and maximum pull dimensions, refer to allowable minimum and maximum pull dimensions provided.



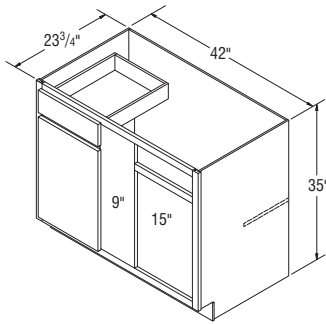
BC3632.5



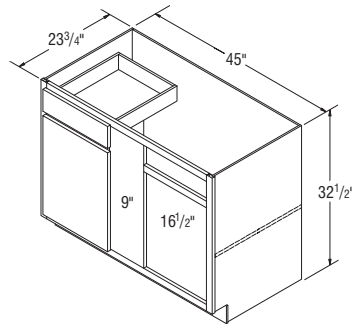
BC3932.5



BC4232.5



BC4532.5

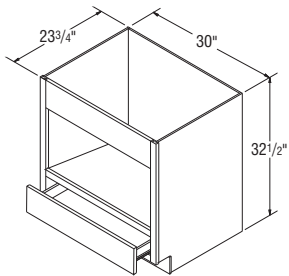


BC4832.5

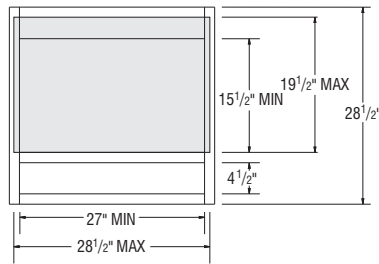
Built-In Microwave Cabinet, 32 1/2" High

NOTES ✓

- ▶ Microwave opening is trimmable.
- ▶ Designed for Built-in Microwaves with trim kits (Cabinet has standard Aristex™ natural interior).



BMW3032.5

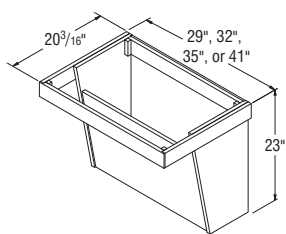


TRIM AREA

NOTES ✓

- ▶ Recommended installation height of 32½" to allow sufficient toe clearance for Universal Design stand-alone vanity applications as a wall hanging unit.
- ▶ Sink Opening Dimensions:
Depth: 16¾"
Widths: VWS2923 = 24¾"
VWS3223 = 27¾"
VWS3523 = 30¾"
VWS4123 = 36¾"
- ▶ Cabinet construction will be All Plywood.

Vanity Wall Sink Cabinets, 23" High

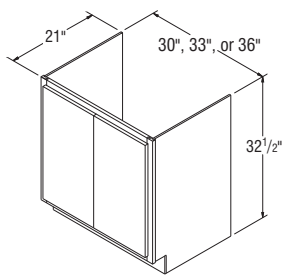


- VWS2923**
- VWS3223**
- VWS3523**
- VWS4123**

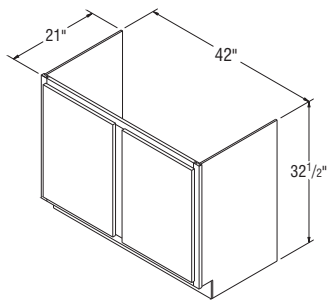
NOTES ✓

- ▶ Must be ordered with Vanity Wall Sink Cabinet (VWS). Not designed to be a stand-alone unit.
- ▶ Two plywood mending plates included to mount RVWS to VWS.
- ▶ Able to be removed for handicap accessible use.

Removable Vanity Wall Sink Cabinets, 32 1/2" High, 21" Deep



- RVWS3032B**
- RVWS3332B**
- RVWS3632B**



- RVWS4232**