

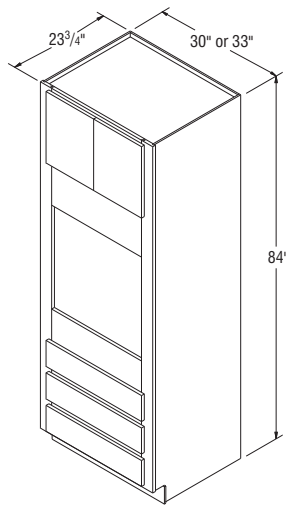
NOTES ✓

- ▶ Two doors and three drawers.
- ▶ Oven shelf support kit included.
- ▶ For OCINSTALLKIT, see page 170.
- ▶ Shelves not available on this cabinet.
- ▶ Back of cabinet scored for easy back removal if needed when oven used is deeper than cabinet can accommodate.
- ▶ Cabinet features concealed face mount hinges.

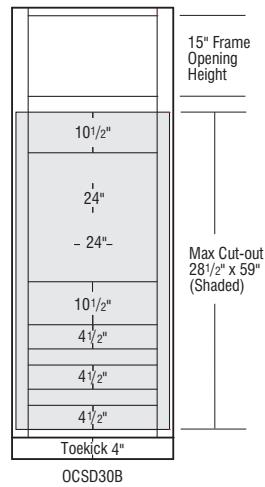
DESIGN SOLUTIONS

- ▶ Be sure to confirm a heat shield is built into your appliance by the manufacturer or install the heat shield included with your appliance.
- ▶ Oven cabinets are trimmable to accommodate a variety of appliance sizes.

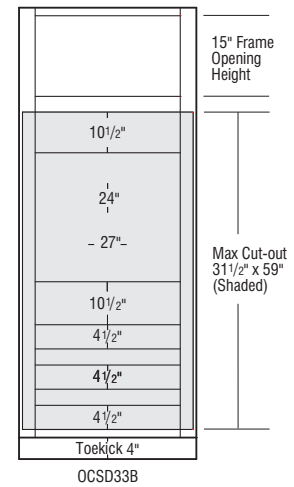
Oven Cabinets, 84" High, 23 3/4" Deep



OCSD30B
OCSD33B



OCSD30B



OCSD33B

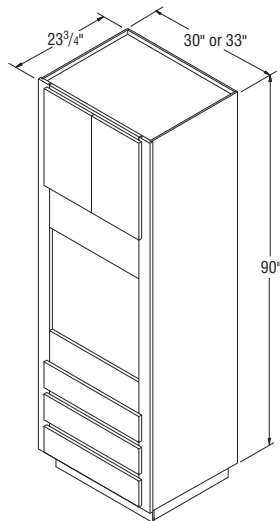
NOTES ✓

- ▶ Two doors and three drawers.
- ▶ Oven shelf support kit included.
- ▶ For OCINSTALLKIT, see page 170.
- ▶ All 90" cabinets are shipped as an 86" cabinet with unfinished Loose Toe Kick Sub Assembly unattached.
- ▶ Additional material may be needed to cover unfinished Loose Toe Kick Sub Assembly.
- ▶ Shelves not available on this cabinet.
- ▶ Refer to Loose Toe Kick Sub Assembly Installation instructions for cabinet installation.
- ▶ Back of cabinet scored for easy back removal if needed when oven used is deeper than cabinet can accommodate.
- ▶ Cabinet features concealed face mount hinges.

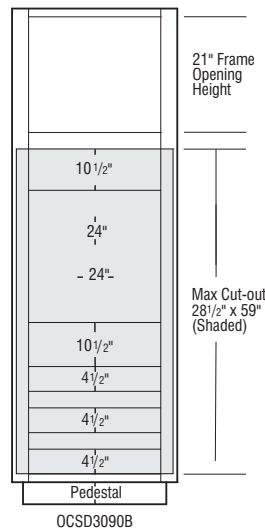
DESIGN SOLUTIONS

- ▶ Be sure to confirm a heat shield is built into your appliance by the manufacturer or install the heat shield included with your appliance.
- ▶ Oven cabinets are trimmable to accommodate a variety of appliance sizes.

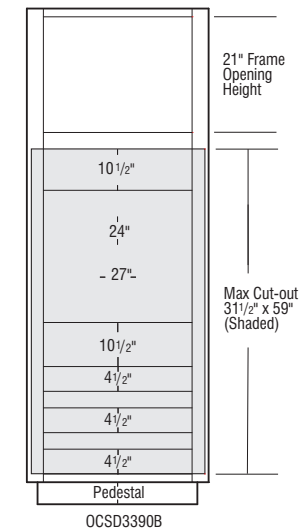
Oven Cabinets, 90" High, 23 3/4" Deep



OCSD3090B
OCSD3390B

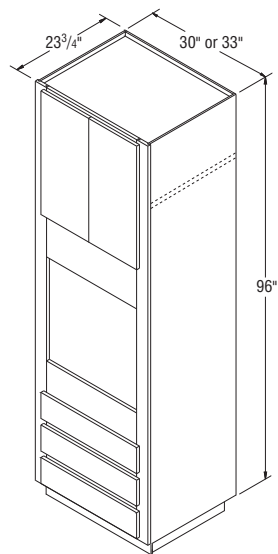


OCSD3090B

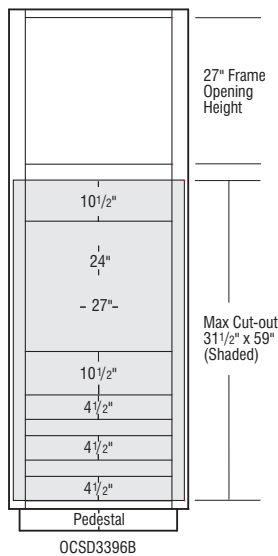
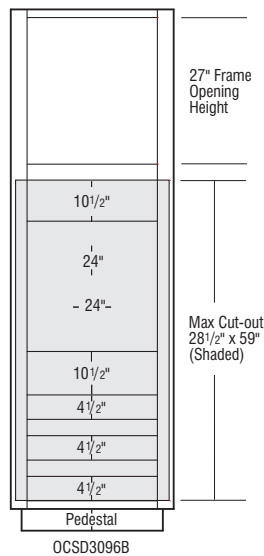


OCSD3390B

Oven Cabinets, 96" High, 23 3/4" Deep



OCSD3096B
OCSD3396B



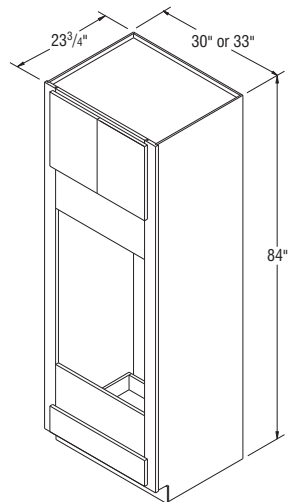
NOTES ✓

- ▶ Two doors, one adjustable shelf, and three drawers.
- ▶ Oven shelf support kit included.
- ▶ For OCINSTALLKIT, see page 170.
- ▶ All 96" cabinets are shipped as a 92" cabinet with unfinished Loose Toekick Sub Assembly unattached.
- ▶ Additional material may be needed to cover unfinished Loose Toekick Sub Assembly.
- ▶ Refer to Loose Toekick Sub Assembly Installation instructions for cabinet installation.
- ▶ Back of cabinet scored for easy back removal if needed when oven used is deeper than cabinet can accommodate.
- ▶ Cabinet features concealed face mount hinges.

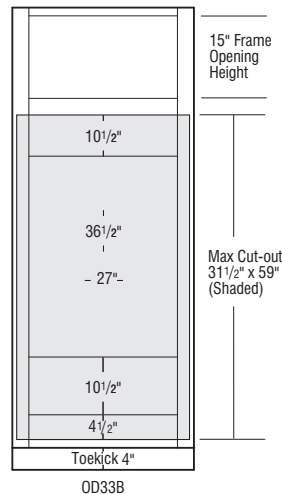
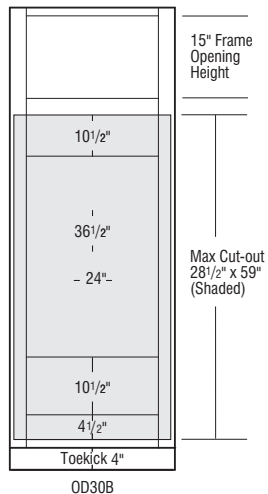
DESIGN SOLUTIONS

- ▶ Be sure to confirm a heat shield is built into your appliance by the manufacturer or install the heat shield included with your appliance.
- ▶ Oven cabinets are trimmable to accommodate a variety of appliance sizes.

Oven Cabinets Double, 84" High, 23 3/4" Deep



OD30B
OD33B



NOTES ✓

- ▶ Two doors and one drawer.
- ▶ Oven shelf support kit included.
- ▶ For OCINSTALLKIT, see page 170.
- ▶ Back of cabinet scored for easy back removal if needed when oven used is deeper than cabinet can accommodate.
- ▶ Cabinet features concealed face mount hinges.

DESIGN SOLUTIONS

- ▶ Be sure to confirm a heat shield is built into your appliance by the manufacturer or install the heat shield included with your appliance.
- ▶ Oven cabinets are trimmable to accommodate a variety of appliance sizes.

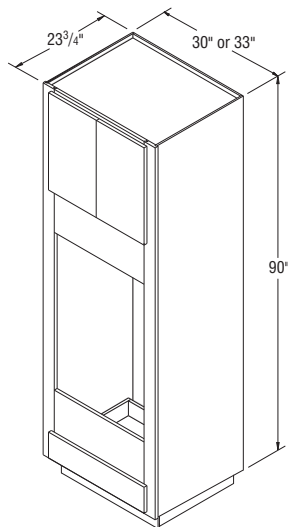
NOTES ✓

- ▶ Two doors and one drawer.
- ▶ Oven shelf support kit included.
- ▶ For OCINSTALLKIT, see page 170.
- ▶ All 90" cabinets are shipped as an 86" cabinet with unfinished Loose Toekick Sub Assembly unattached.
- ▶ Additional material may be needed to cover unfinished Loose Toekick Sub Assembly.
- ▶ Refer to Loose Toekick Sub Assembly Installation instructions for cabinet installation.
- ▶ Back of cabinet scored for easy back removal if needed when oven used is deeper than cabinet can accommodate.
- ▶ Cabinet features concealed face mount hinges.

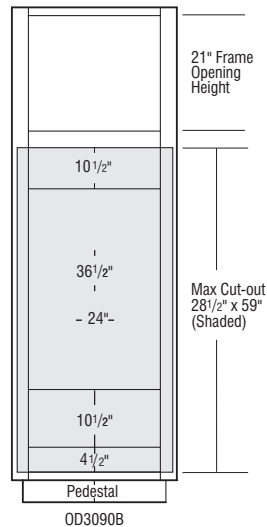
DESIGN SOLUTIONS

- ▶ Be sure to confirm a heat shield is built into your appliance by the manufacturer or install the heat shield included with your appliance.
- ▶ Oven cabinets are trimmable to accommodate a variety of appliance sizes.

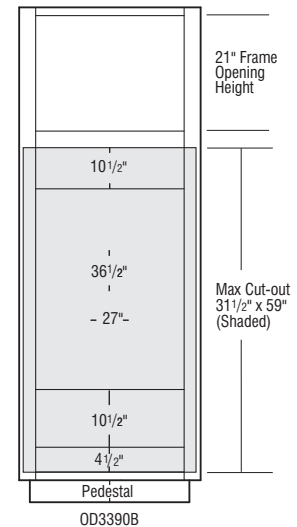
Oven Cabinets Double, 90" High, 23 3/4" Deep



OD3090B
OD3390B



OD3090B



OD3390B

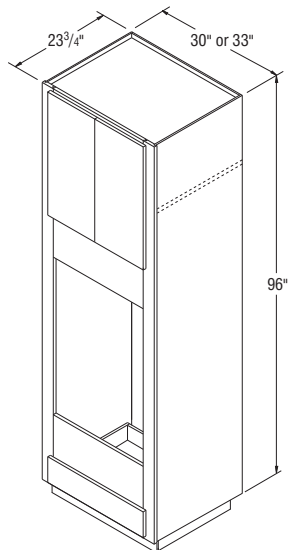
NOTES ✓

- ▶ Two doors, one adjustable shelf, and one drawer.
- ▶ Oven shelf support kit included.
- ▶ For OCINSTALLKIT, see page 170.
- ▶ All 96" cabinets are shipped as a 92" cabinet with unfinished Loose Toekick Sub Assembly unattached.
- ▶ Additional material may be needed to cover unfinished Loose Toekick Sub Assembly.
- ▶ Refer to Loose Toekick Sub Assembly Installation instructions for cabinet installation.
- ▶ Back of cabinet scored for easy back removal if needed when oven used is deeper than cabinet can accommodate.
- ▶ Cabinet features concealed face mount hinges.

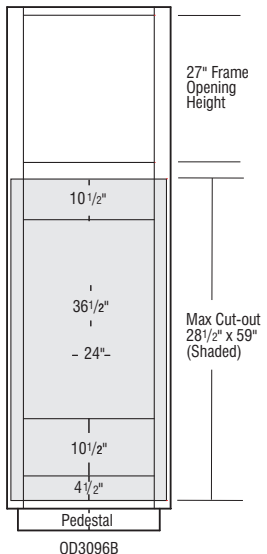
DESIGN SOLUTIONS

- ▶ Be sure to confirm a heat shield is built into your appliance by the manufacturer or install the heat shield included with your appliance.
- ▶ Oven cabinets are trimmable to accommodate a variety of appliance sizes.

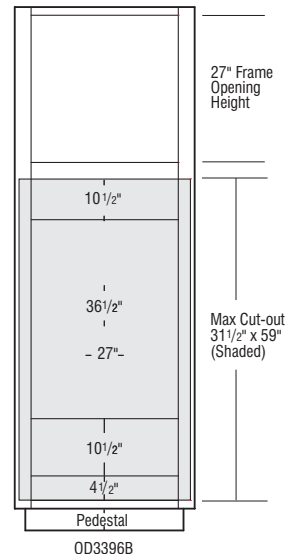
Oven Cabinets Double, 96" High, 23 3/4" Deep



OD3096B
OD3396B



OD3096B



OD3396B

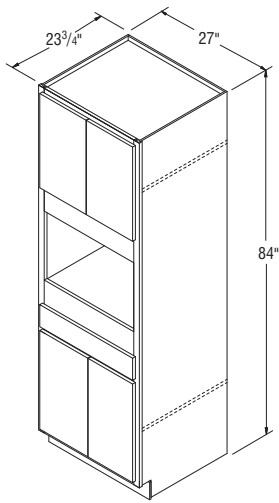
Microwave Cabinets, 84" High, 23 3/4" Deep

NOTES

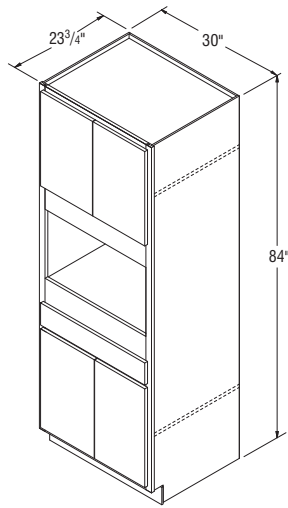
- ▶ Two doors above microwave, one drawer and two doors below microwave.
- ▶ Back of cabinet scored for easy back removal if needed when oven used is deeper than cabinet can accommodate.
- ▶ Drawer aligns with a standard 35" high Base cabinet.
- ▶ Upper doors align with a 24" high Wall Cabinet.

DESIGN SOLUTIONS

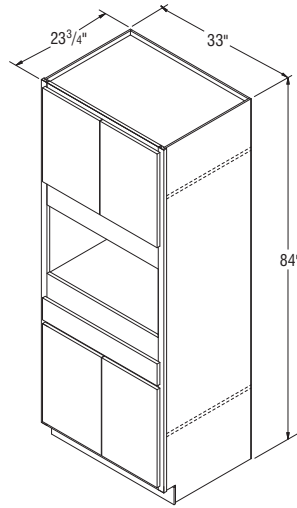
- ▶ Be sure to confirm a heat shield is built into your appliance by the manufacturer or install the heat shield included with your appliance.
- ▶ Microwave cabinets are trimmable to accommodate a variety of appliance sizes.



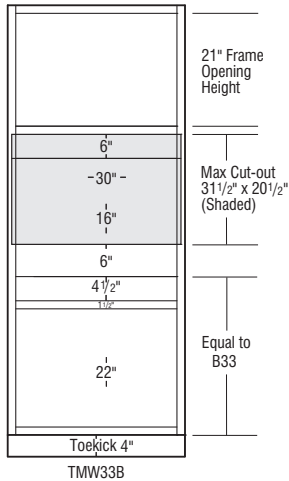
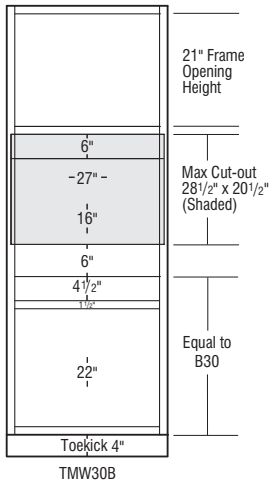
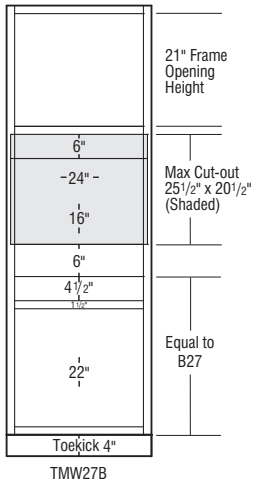
TMW27B



TMW30B



TMW33B



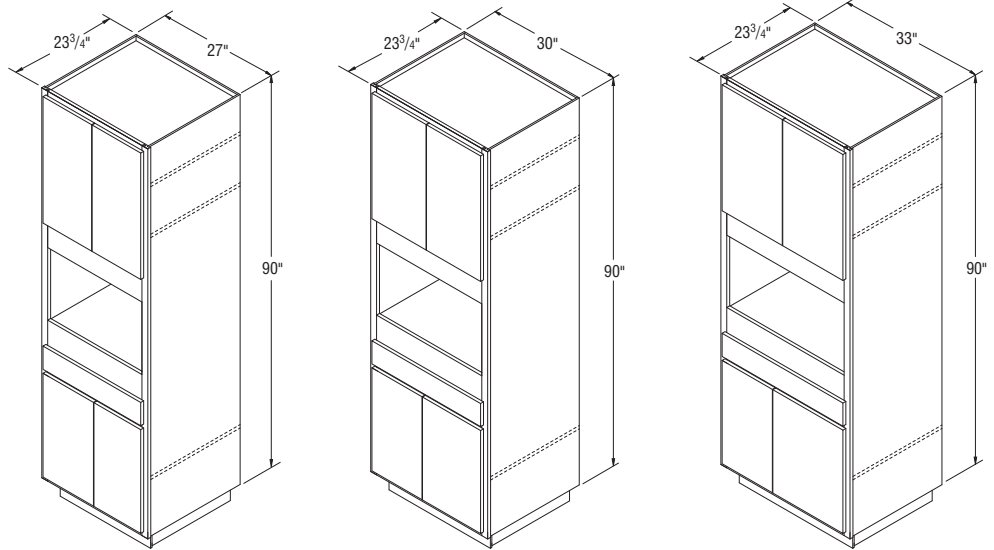
NOTES ✓

- ▶ Two doors above microwave, one drawer and two doors below microwave.
- ▶ All 90" cabinets are shipped as an 86" cabinet with unfinished Loose Toekick Sub Assembly unattached.
- ▶ Additional material may be needed to cover unfinished Loose Toekick Sub Assembly.
- ▶ Refer to Loose Toekick Sub Assembly Installation instructions for cabinet installation.
- ▶ Back of cabinet scored for easy back removal if needed when oven used is deeper than cabinet can accommodate.
- ▶ Drawer aligns with a standard 35" high Base cabinet.
- ▶ Upper doors align with a 24" high Wall Cabinet.

DESIGN SOLUTIONS

- ▶ Be sure to confirm a heat shield is built into your appliance by the manufacturer or install the heat shield included with your appliance.
- ▶ Microwave cabinets are trimmable to accommodate a variety of appliance sizes.

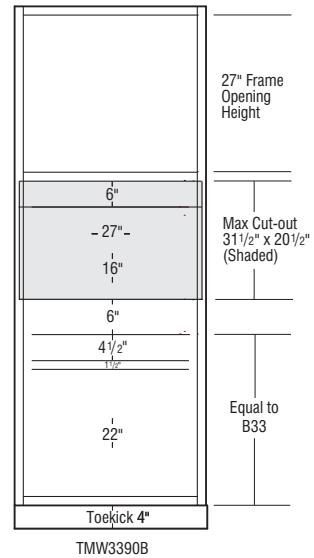
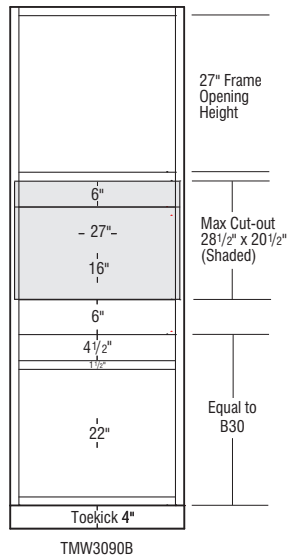
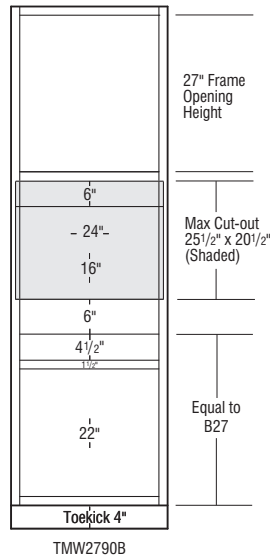
Microwave Cabinets, 90" High, 23 3/4" Deep



TMW2790B

TMW3090B

TMW3390B



Microwave Cabinets, 96" High, 23 3/4" Deep

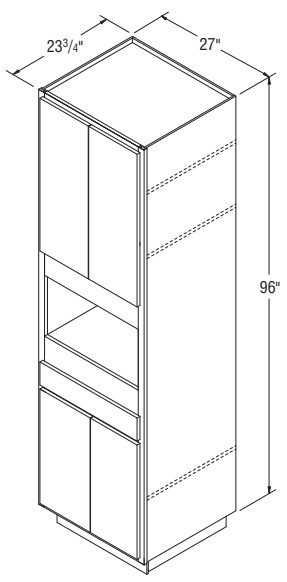
NOTES

- ▶ Two doors above microwave, one drawer and two doors below microwave.
- ▶ All 96" cabinets are shipped as an 92" cabinet with unfinished Loose Toekick Sub Assembly unattached.
- ▶ Additional material may be needed to cover unfinished Loose Toekick Sub Assembly.
- ▶ Refer to Loose Toekick Sub Assembly Installation instructions for cabinet installation.
- ▶ Back of cabinet scored for easy back removal if needed when oven used is deeper than cabinet can accommodate.
- ▶ Drawer aligns with a standard 35" high Base cabinet.
- ▶ Upper doors align with a 24" high Wall Cabinet.

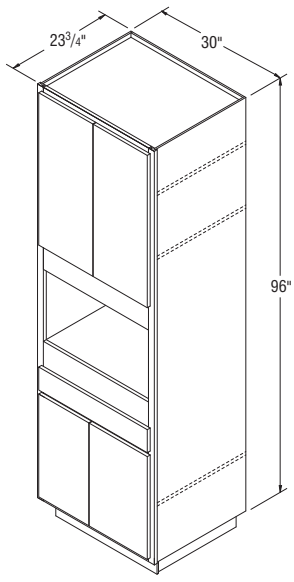
DESIGN SOLUTIONS

- ▶ Be sure to confirm a heat shield is built into your appliance by the manufacturer or install the heat shield included with your appliance.
- ▶ Microwave cabinets are trimmable to accommodate a variety of appliance sizes.

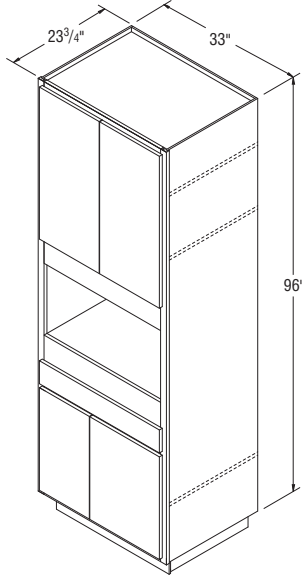
TALL CABINETS



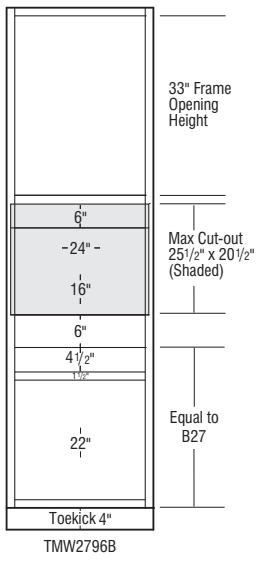
TMW2796B



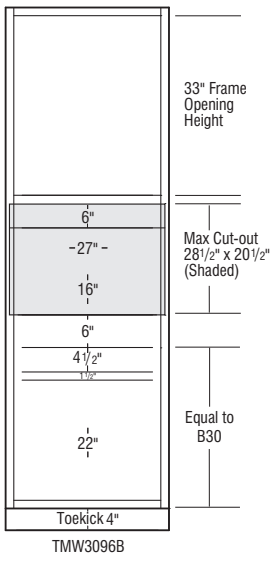
TMW3096B



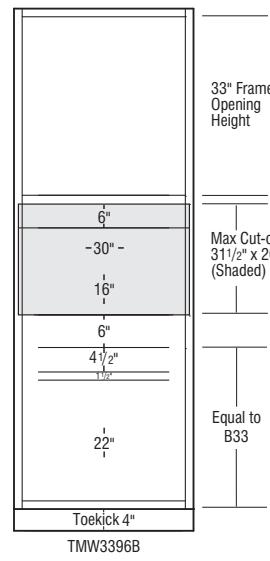
TMW3396B



TMW2796B



TMW3096B



TMW3396B

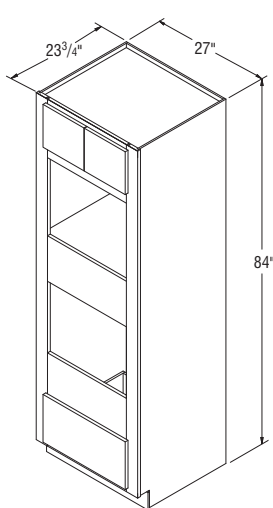
NOTES ✓

- ▶ Two doors above the microwave and one deep drawer below the oven.
- ▶ Oven shelf support kit included.
- ▶ Back of cabinet scored for easy back removal if needed when oven used is deeper than cabinet can accommodate.

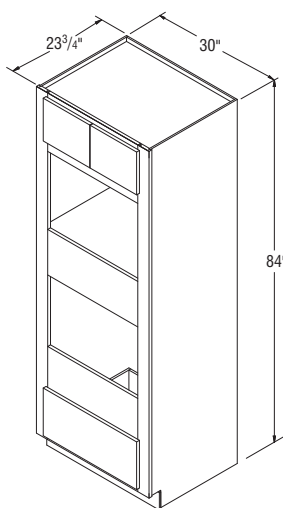
DESIGN SOLUTIONS

- ▶ Be sure to confirm a heat shield is built into your appliance by the manufacturer or install the heat shield included with your appliance.
- ▶ Oven cabinets are trimmable to accommodate a variety of appliance sizes.

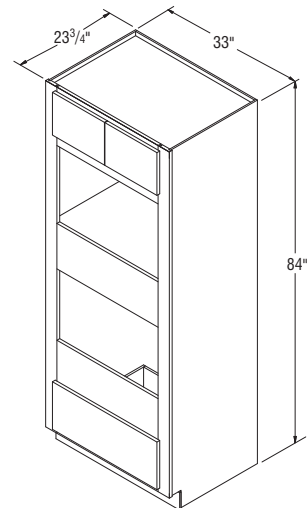
Oven with Microwave Cabinets, 84" High, 23 3/4" Deep



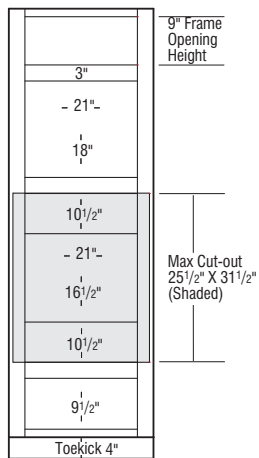
OMS27DDB



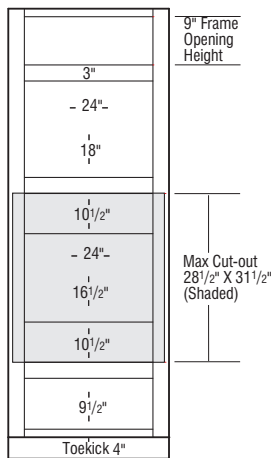
OMS30DDB



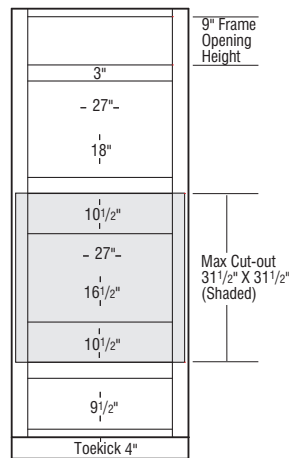
OMS33DDB



OMS27DDB



OMS30DDB



OMS33DDB

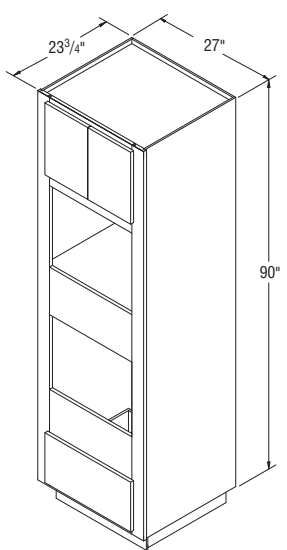
Oven with Microwave Cabinets, 90" High, 23 3/4" Deep

NOTES ✓

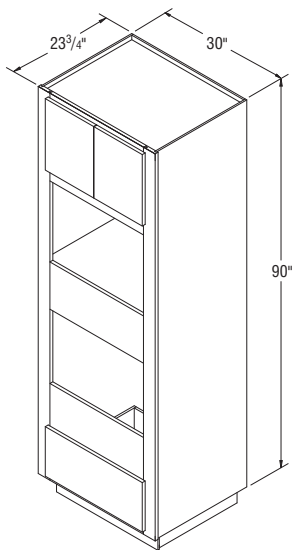
- ▶ Two doors above microwave, one deep drawer below oven.
- ▶ Oven shelf support kit included.
- ▶ All 90" cabinets are shipped as an 86" cabinet with unfinished Loose Toekick Sub Assembly unattached.
- ▶ Additional material may be needed to cover unfinished Loose Toekick Sub Assembly.
- ▶ Refer to Loose Toekick Sub Assembly Installation instructions for cabinet installation.
- ▶ Back of cabinet scored for easy back removal if needed when oven used is deeper than cabinet can accommodate.

DESIGN SOLUTIONS

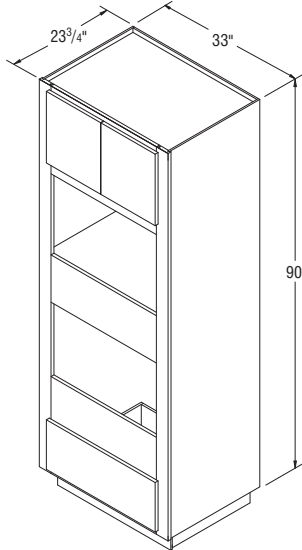
- ▶ Be sure to confirm a heat shield is built into your appliance by the manufacturer or install the heat shield included with your appliance.
- ▶ Oven cabinets are trimmable to accommodate a variety of appliance sizes.



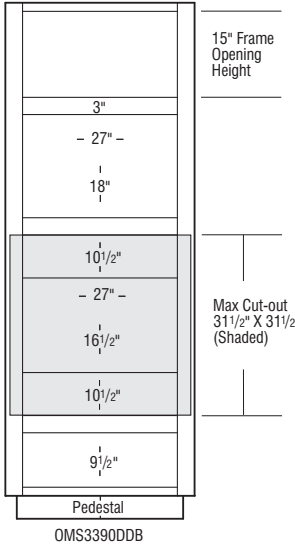
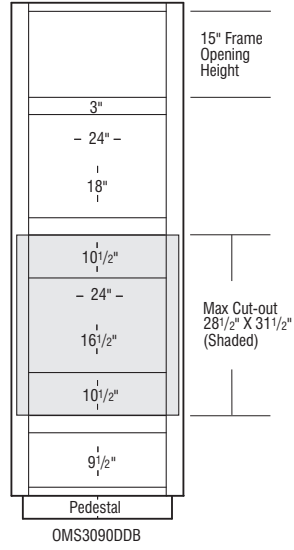
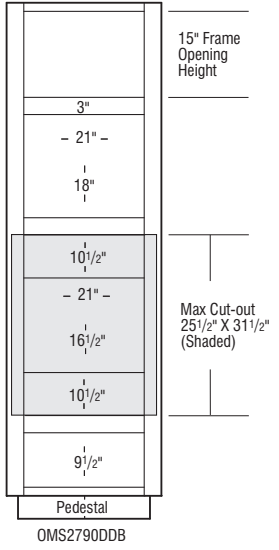
OMS2790DDB



OMS3090DDB



OMS3390DDB



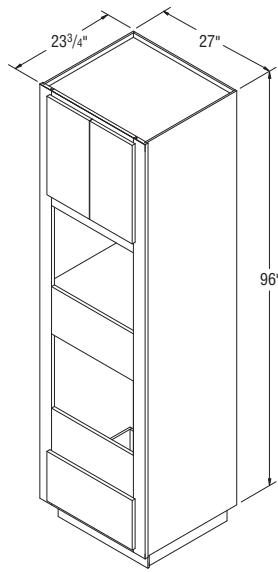
NOTES ✓

- ▶ Two doors above microwave, one deep drawer below oven.
- ▶ Oven shelf support kit included.
- ▶ All 96" cabinets are shipped as an 92" cabinet with unfinished Loose Toekick Sub Assembly unattached.
- ▶ Additional material may be needed to cover unfinished Loose Toekick Sub Assembly.
- ▶ Refer to Loose Toekick Sub Assembly Installation instructions for cabinet installation.
- ▶ Back of cabinet scored for easy back removal if needed when oven used is deeper than cabinet can accommodate.

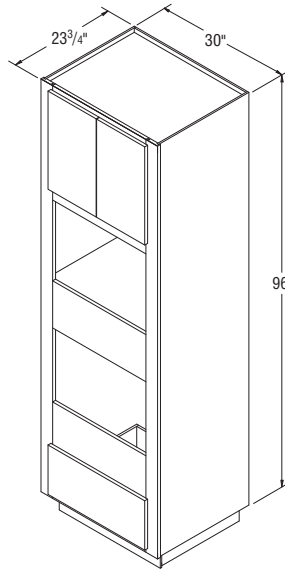
DESIGN SOLUTIONS

- ▶ Be sure to confirm a heat shield is built into your appliance by the manufacturer or install the heat shield included with your appliance.
- ▶ Oven cabinets are trimmable to accommodate a variety of appliance sizes.

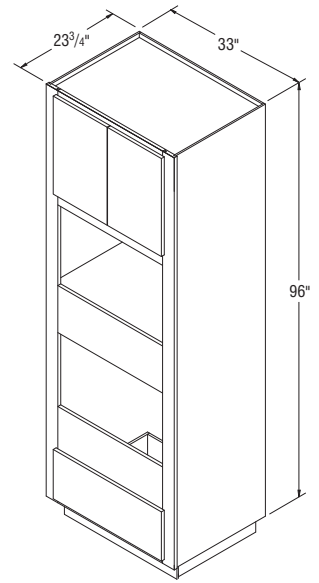
Oven with Microwave Cabinets, 96" High, 23 3/4" Deep



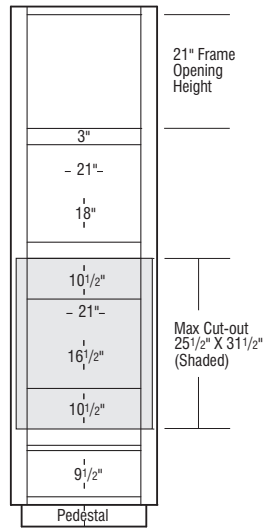
OMS2796DDB



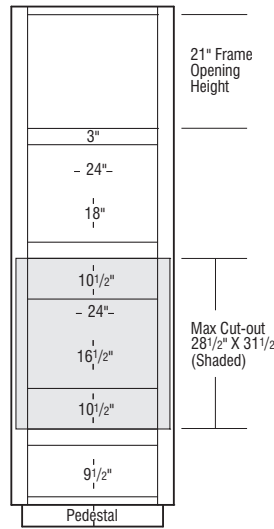
OMS3096DDB



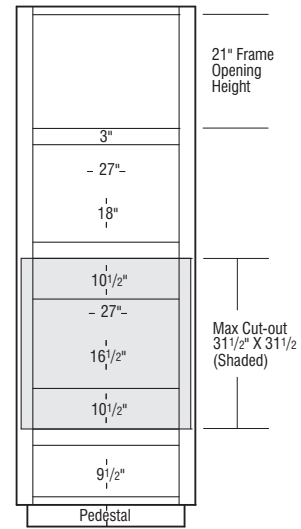
OMS3396DDB



OMS2796DDB

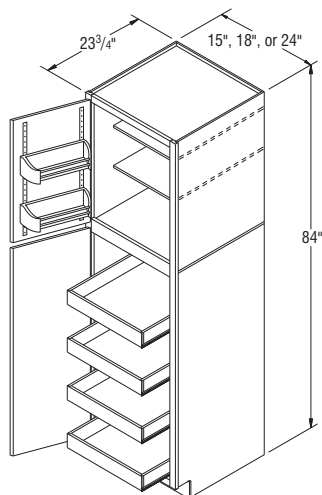


OMS3096DDB



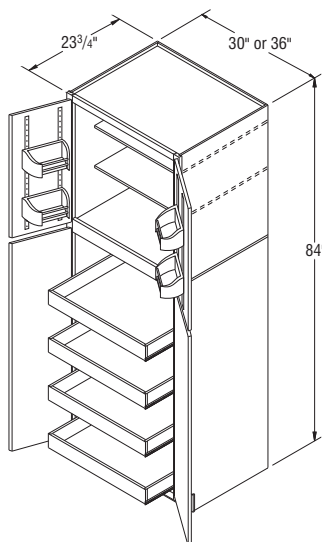
OMS3396DDB

Pantry SuperCabinets™, 84" High, 23 3/4" Deep



PSC15*
PSC18*
PSC24*

*Specify L or R on all single door Pantry SuperCabinets.



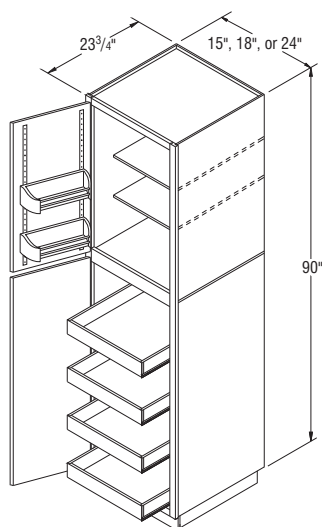
PSC30B
PSC36B

NOTES ✓

- ▶ Two reduced depth 3/4" thick adjustable shelves in top section.
- ▶ Each upper door features two adjustable height door racks.
- ▶ Four adjustable height Roll Trays in bottom section.
- ▶ Upgrade charges do not include Roll Trays.
- ▶ Large openings on miter styles will be two doors doweled together.
- ▶ Refer to the Cabinet Specifications Section for door opening dimensions.
- ▶ Smart Stop™ drawer guides are not available on Roll Trays in Select and APC Construction.

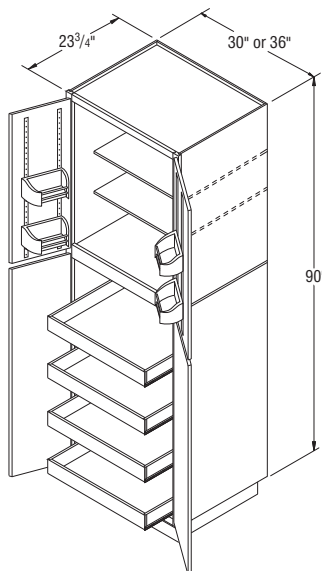


Pantry SuperCabinets™, 90" High, 23 3/4" Deep



PSC1590*
PSC1890*
PSC2490*

*Specify L or R on all single door Pantry SuperCabinets.



PSC3090B
PSC3690B

NOTES ✓

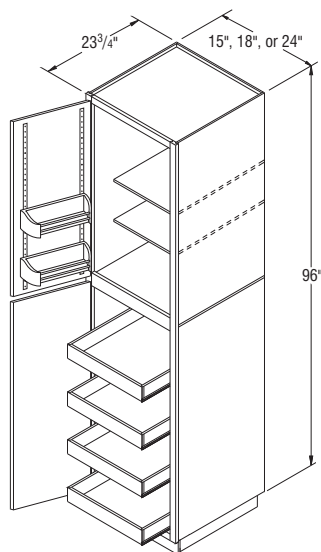
- ▶ Two reduced depth 3/4" thick adjustable shelves in top section.
- ▶ Each upper door features two adjustable height door racks.
- ▶ Four adjustable height Roll Trays in bottom section.
- ▶ Upgrade charges do not include Roll Trays.
- ▶ Large openings on miter styles will be two doors doweled together.
- ▶ All 90" Pantry SuperCabinets™ are shipped as a 86" cabinet with unfinished Loose Toekick Sub Assembly.
- ▶ Additional material may be needed to cover unfinished Loose Toekick Sub Assembly
- ▶ Refer to the Cabinet Specifications Section for door opening dimensions.
- ▶ Refer to Loose Toekick Sub Assembly Installation instructions for cabinet installation.
- ▶ Smart Stop™ drawer guides are not available on Roll Trays in Select and APC Construction.



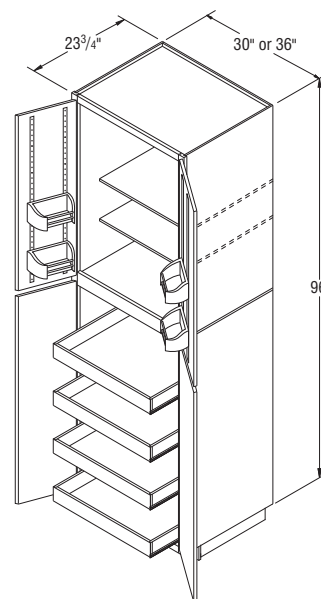
NOTES ✓

- ▶ Two reduced depth 3/4" thick adjustable shelves in top section.
- ▶ Each upper door features two adjustable height door racks.
- ▶ Four adjustable height Roll Trays in bottom section.
- ▶ Upgrade charges do not include Roll Trays.
- ▶ Large openings on miter styles will be two doors doweled together.
- ▶ All 96" Pantry SuperCabinets™ are shipped as a 92" cabinet with unfinished Loose Toekick Sub Assembly.
- ▶ Additional material may be needed to cover unfinished Loose Toekick Sub Assembly.
- ▶ Refer to the Cabinet Specifications Section for door opening dimensions.
- ▶ Refer to Loose Toekick Sub Assembly Installation instructions for cabinet installation.
- ▶ Smart Stop™ drawer guides are not available on Roll Trays in Select and APC Construction.

Pantry SuperCabinets™, 96" High, 23 3/4" Deep



PSC1596*
PSC1896*
PSC2496*



PSC3096B
PSC3696B

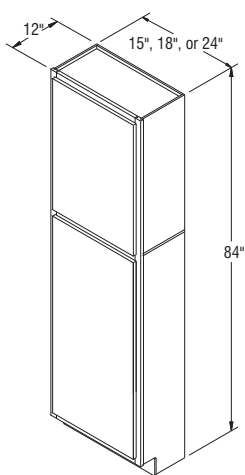
*Specify L or R on all single door Pantry SuperCabinets.



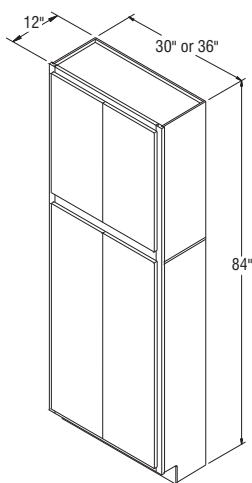
Utility Cabinets, 84" High, 12" and 23 3/4" Deep

NOTES ✓

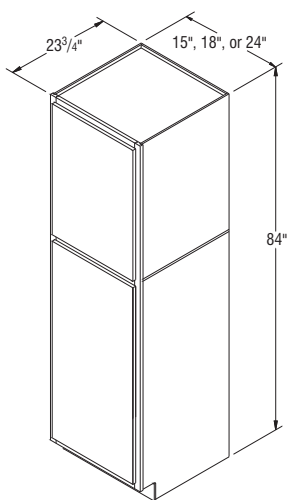
- ▶ 84" high Utility cabinets include one fixed shelf between doors.
- ▶ Large openings on miter styles will be two doors doweled together.
- ▶ Shelves not included in Utility cabinets. For shelf and Roll Tray options see pages 171-172.
- ▶ Refer to the Cabinet Specifications Section for door opening dimensions.



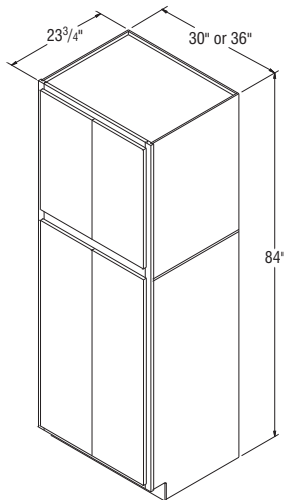
U1512*
U1812*
U2412*



U3012B
U3612B



U15*
U18*
U24*



U30B
U36B

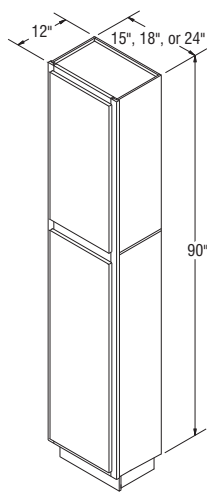
*Specify L or R on all single door Utility Cabinets.

NOTES ✓

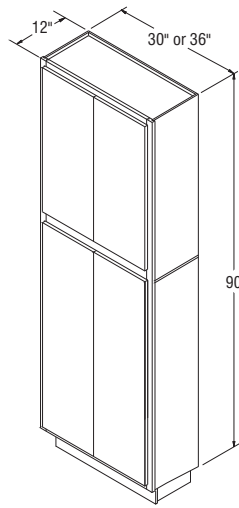
- ▶ 90" high Utility cabinets include one fixed shelf between doors.
- ▶ Large openings on miter styles will be two doors doweled together.
- ▶ Shelves not included in Utility cabinets. For shelf and Roll Tray options see pages 171-172.
- ▶ All 90" high Utility cabinets are shipped as an 86" cabinet with unfinished Loose Toekick Sub Assembly.
- ▶ Additional material may be needed to cover unfinished Loose Toekick Sub Assembly.
- ▶ Refer to the Cabinet Specifications Section for door opening dimensions.
- ▶ Refer to Loose Toekick Sub Assembly Installation instructions for cabinet installation.



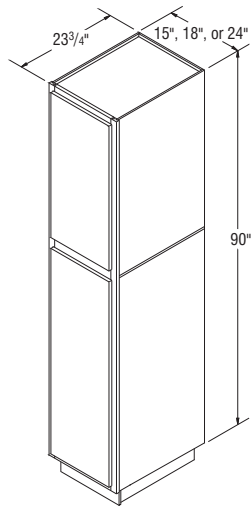
Utility Cabinets, 90" High, 12" and 23 3/4" Deep



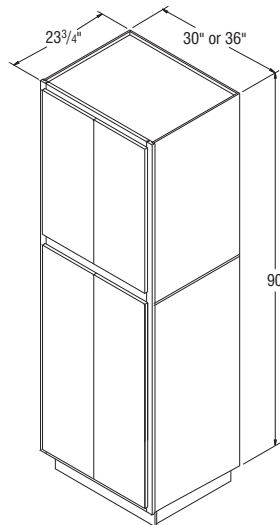
U159012*
U189012*
U249012*



U309012B
U369012B



U1590*
U1890*
U2490*



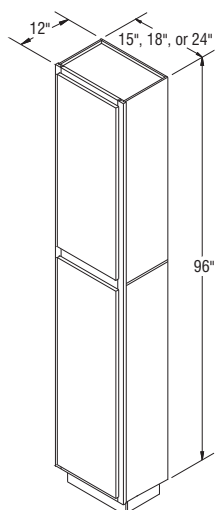
U3090B
U3690B

*Specify L or R on all single door Utility Cabinets.

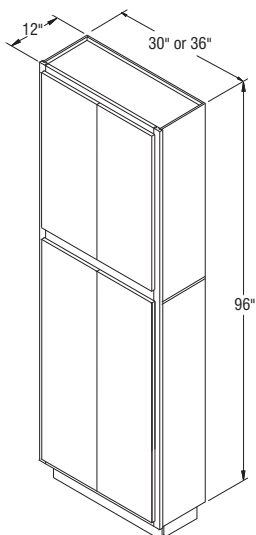
Utility Cabinets, 96" High, 12" and 23 3/4" Deep

NOTES ✓

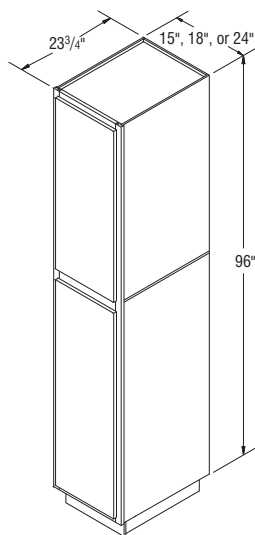
- ▶ 96" high Utility cabinets include one fixed shelf between doors.
- ▶ Large openings on miter styles will be two doors doweled together.
- ▶ Shelves not included in Utility cabinets. For shelf and Roll Tray options see pages 171-172.
- ▶ All 96" Utility cabinets are shipped as a 92" cabinet with unfinished Loose Toekick Sub Assembly.
- ▶ Additional material may be needed to cover unfinished Loose Toekick Sub Assembly.
- ▶ Refer to the Cabinet Specifications Section for door opening dimensions.
- ▶ Refer to Loose Toekick Sub Assembly instructions for cabinet installation.



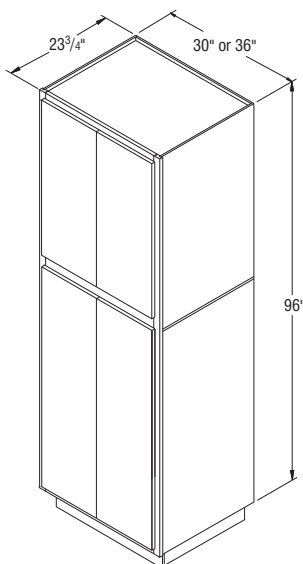
U159612*
U189612*
U249612*



U309612B
U369612B



U1596*
U1896*
U2496*



U3096B
U3696B

*Specify L or R on all single door Utility Cabinets.