

VESDA VLS

The VESDA VLS is similar to the standard VESDA VLP detector, but also includes a valve mechanism in the inlet manifold and software to control the airflow from the four sectors (pipes). This configuration enables a single VESDA zone to be divided into four separate sectors, for example, distinguishing between separate voids within a room.



How It Works

The VLS draws air from all sectors in use. If the smoke level reaches the Adaptive Scan Threshold, the VLS quickly scans each pipe to identify which pipe is carrying smoke. If more than one pipe is transporting smoke, the sector with the highest smoke concentration is designated as the First Alarm Sector (FAS).

Once Fast Scan is completed and the FAS identified, the VLS continues to closely monitor all four sectors (pipes) to monitor fire growth and maintain full protection of the area.

There are four alarm levels (Alert, Action, Fire 1 and Fire 2) for each sector (pipe) and the sensitivity for each alarm level can be set to ensure the optimum alarm thresholds are applied for each sector.

The VLS Display

The VLS display has a bar graph to indicate the overall smoke level, alarm threshold and fault indication. The bar graph displays the individual sector smoke levels during the scanning sequence. There is an extra LED to indicate that a First Alarm Sector (FAS) has been identified and an extra function to the Silence Button to allow for Manual Scan to be initiated.

The VLS display module can be mounted into the VLS front cover or remotely into a 19in subrack or a remote box.

Relay Options

The VLS detector can be fitted with a programmable 7 or 12 relay Termination card. Relays may be mounted in a remote box or in a 19in subrack.

VESDAnet™

The status of the detector, and all alarm, service and fault events, are transmitted to displays and external systems via VESDAnet, VESDA's fault tolerant communications protocol. The VESDAnet loop provides a robust bi-directional communication network between devices, even allowing continued operation during single point wiring failures. It also provides system programming from a single location and forms the basis of the modular nature of the VESDA system.

AutoLearn™ and Referencing

The VLS has both the AutoLearn™ and Referencing software functions to ensure optimum operation in different environments and to eliminate the occurrence of nuisance alarms.

AutoLearn monitors the ambient environment and sets the most appropriate alarm thresholds (Alert, Action, Fire 1, Fire 2) during the commissioning process.

Referencing ensures external pollution to a protected environment does not interfere with the true smoke level being detected.

Features

- Individual pipe identification
- Adaptive Scan Threshold
- Wide sensitivity range
- Laser based smoke detection
- VESDAnet™ communication
- 4 alarm levels per sector
- High efficiency aspirator
- Clean air barrier optics protection
- Easy to replace air filter
- 7 or 12 programmable relays option
- AutoLearn™
- Referencing
- Event log
- Recessed mounting

Listings/Approvals

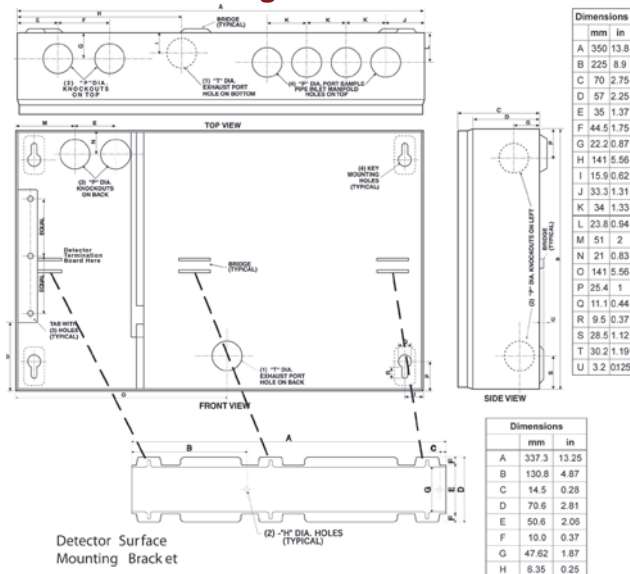
- UL
- ULC
- FM
- CCC
- ActivFire
- CE
- LPCB
- VdS
- NF-SSI (www.marque-nf.com)
- VNIPO
- EN 54-20
 - Class A (40 holes / 0.08% obs/m)
 - Class B (40 holes / 0.23% obs/m)
 - Class C (60 holes / 0.65% obs/m)

Classification of any configuration is determined using ASPIRE.

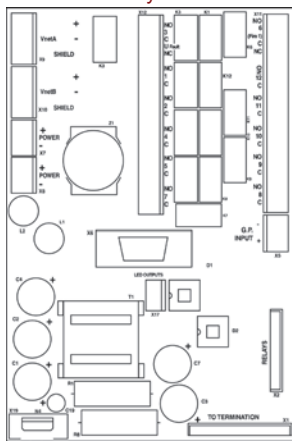
Regional approvals listings and regulatory compliance vary between VESDA product models. Refer to www.xtralis.com for the latest product approvals matrix.

VESDA VLS

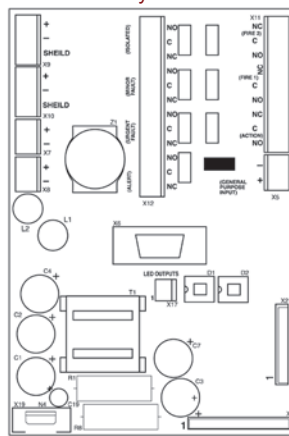
Detector Mounting Box



Detector Termination Card
12 Relay Version



Detector Termination Card
7 Relay Version



Detectors

VLS detector with two blank plates and a Scanner Display module. 7 relays version	VLS-204
VLS detector with a centrally mounted LCD Programmer module and a Scanner Display module. 7 relays version	VLS-214
VLS detector with two blank plates and a Scanner Display module. 12 relays version.	VLS-304
VLS detector with a centrally mounted LCD Programmer module and a Scanner Display module. 12 relays version.	VLS-314
VLS detector with FOK. 7 relays version	VLS-600
VLS detector with FOK. 12 relays version	VLS-700

Spare Parts

VESDA VLS Display Module	VSP-004
Filter Cartridge	VSP-005
VESDA VLS Chassis Assembly, includes Scanning Manifold	VSP-009
Recessed Mounting Kit (optional)	VSP-011
Aspirator for VESDA VLS	VSP-015
VLS Screw Cover - Pack of 2	VSP-020
Filter Cartridge - Pack of 20	VSP-025
VESDA VLS Mounting Bracket	VSP-028
12 Relay Remote Termination Card (RCT12)	VSP-208
Exhaust Deflector - Black	VSP-540

Accessories

Remote Programmer	VRT-100
VESDA VLS display with a remote termination card. 7 relays	VRT-400
VESDA VLS display with a remote termination card. No relays	VRT-700
VESDA VLS display with a remote termination card. 12 relays	VRT-800
Includes blank plate with a remote mounting box. 7 relays version for VLS	VRT-E00
Includes blank plate with a remote mounting box. 12 relays version for VLS	VRT-900
Hand-held Programmer	VHH-100
IP66 enclosure (RAL 7035 powder coated)	020-050
Stainless Steel Grade 316L IP66 enclosure for marine applications or similar environments	020-050-SS
19 in Sub Rack Configuration	Contact Xtralis

Specifications

Supply Voltage: 18–30 VDC

Power Consumption @ 24 VDC:

No Display or Programmer

	Aspirator @ 3000 rpm		Aspirator @ 4200 rpm	
	Quiescent	With Alarm	Quiescent	With Alarm
Power	5.8 W	6.24 W	6.72 W	7.2 W
Current	240 mA	260 mA	280 mA	300 mA

Dimensions (WHD):

350 mm x 225 mm x 125 mm (13.8 in x 8.9 in x 4.9 in)

Weight:

4.0 kg (9 lbs) including Display and Programmer modules

Operating Conditions:

Tested to: -10°C to 55°C* (14°F to 131°F)

Detector Ambient: 0°C to 39°C* (32° to 103°F) (Recommended)

Sampled Air: -20° to 60°C* (-4° to 140°F)

Humidity: 10% to 95% RH, non-condensing

Please consult your Xtralis office for operation outside these parameters or where sampled air is continually above 0.05% obs/m (0.015% obs/ft) under normal operating conditions.

Storage Conditions (non-operational):

Battery life: Up to 2 years

Humidity: Dry (<95%)

Temperature: 0° to 85° C (32° to 185°F)

Must not be exposed to sunlight or other radiation sources

Sampling Network:

Maximum length per pipe: 100m (328 ft)

Aggregate pipe length: 200 m (656 ft)

Minimum flow per pipe: 15 liters/min.

Pipe Modelling Design Tool: ASPIRE™

These pipe lengths represent best practice for systems with single pipe runs on each port (no branching). For longer and/or more complex pipe arrangements, predictions of EN 54-20 compliance are determined using ASPIRE.

Area Coverage

Up to 2000 m² (21520 sq. ft.) depending on local codes and standards

Pipe Size:

External Diameter 25 mm (1 in)

Internal Diameter 15–21 mm (5/16 in–7/8 in)

Programmable Relays:

7 or 12 Relays option

Contacts rated 2 A @ 30 VDC

Default: 7 Relays: NO/NC contacts Alert, Action, Fire 1, Fire 2, Maintenance, Urgent Fault & Isolate

Default: 12 Relays: 10 x NO, 2 x NO/NC contacts Alert, Action, Fire 1, Fire 2, Maintenance, Urgent Fault & Isolate, First Alarm Sector 1 to 4 and Scan

IP Rating: IP30

Cable Access: 8 x 25 mm (1 in) knockouts in various positions

Cable Termination:

Screw terminals 0.2–2.5 sq mm (30–12 AWG)

Sensitivity Range:

0.005%–20% obs/m (0.0016%–6.25% obs/ft)

Alarm Threshold Setting Range:

Alert: 0.005%–1.990% obs/m (0.0016%–0.6218% obs/ft)

Action: 0.010%–1.995% obs/m (0.0031%–0.6234% obs/ft)

Fire 1: 0.015%–2.00% obs/m (0.0046%–0.625% obs/ft)

Fire 2: 0.020%–20.00% obs/m (0.0063%–6.25% obs/ft)*

*Limited to 12% obs/m (4% obs/ft) in UL mode

Software Features:

Event Log: Up to 18,000 events stored on FIFO basis.

AutoLearn: Minimum 15 minutes, maximum 15 days.

Recommended minimum period 1 day. During AutoLearn thresholds are NOT changed from pre-set values.

Referencing: Compensation for external ambient conditions.

Four Alarm Levels (per sector pipe): Alert, Action, Fire 1 & Fire 2.

Two Fault Warning Levels: Maintenance and Major fault.

Software Programmable Relays: 7 or 12.

Maintenance Aids: Filter & Flow monitoring.

Event reporting via VESDAnet or Event Log.

Adaptive Scan Threshold: Detector selects the appropriate scan threshold automatically.

* Product UL listed for use from 0°C to 38°C (32°F to 104°F)

www.xtralis.com

UK and Europe +44 1442 242 330 D-A-CH +49 431 23284 1 The Americas +1 781 740 2223

Middle East +962 6 588 5622 Asia +86 21 5240 0077 Australia and New Zealand +61 3 9936 7000

The contents of this document are provided on an "as is" basis. No representation or warranty (either express or implied) is made as to the completeness, accuracy or reliability of the contents of this document. The manufacturer reserves the right to change designs or specifications without obligation and without further notice. Except as otherwise provided, all warranties, express or implied, including without limitation any implied warranties of merchantability and fitness for a particular purpose are expressly excluded.

Xtralis, the Xtralis logo, The Sooner You Know, VESDA-E, VESDA, ICAM, ECO, OSID, HeiTel, ADPRO, IntrusionTrace, LoiterTrace, ClientTrace, SmokeTrace, X0a, X0h, iTrace, iCommand, iRespond, iCommission, iPIR, and FMST are trademarks and/or registered trademarks of Xtralis and/or its subsidiaries in the United States and/or other countries. Other brand names mentioned herein are for identification purposes only and may be trademarks of their respective holder(s). Your use of this document does not constitute or create a licence or any other right to use the name and/or trademark and/or label.

This document is subject to copyright owned by Xtralis. You agree not to copy, communicate to the public, adapt, distribute, transfer, sell, modify or publish any contents of this document without the express prior written consent of Xtralis.

Doc. no. 09361_20

Part: 17873

