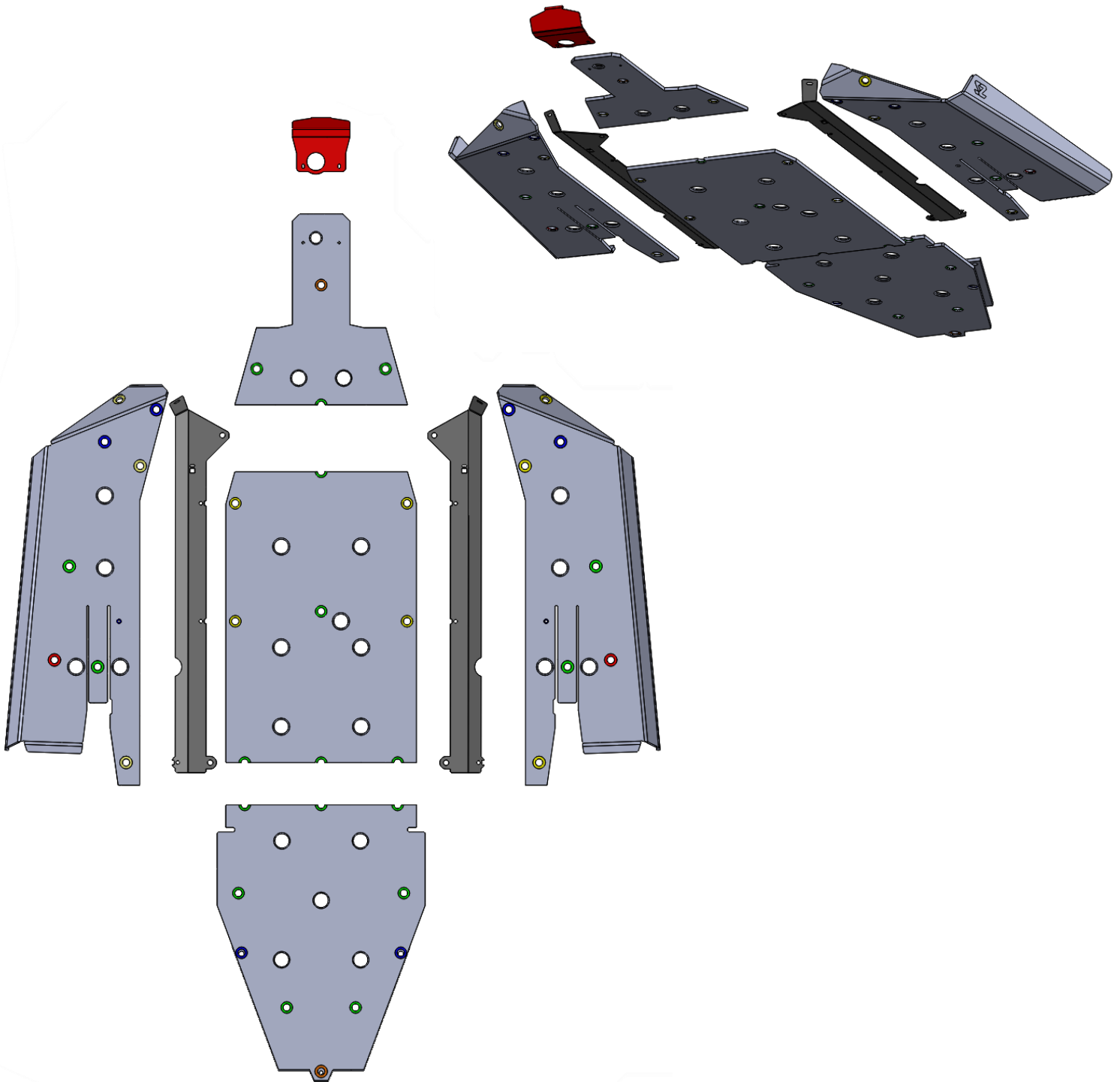


RZR PRO XP 2 Seat Seizmik Skid Plate Manual

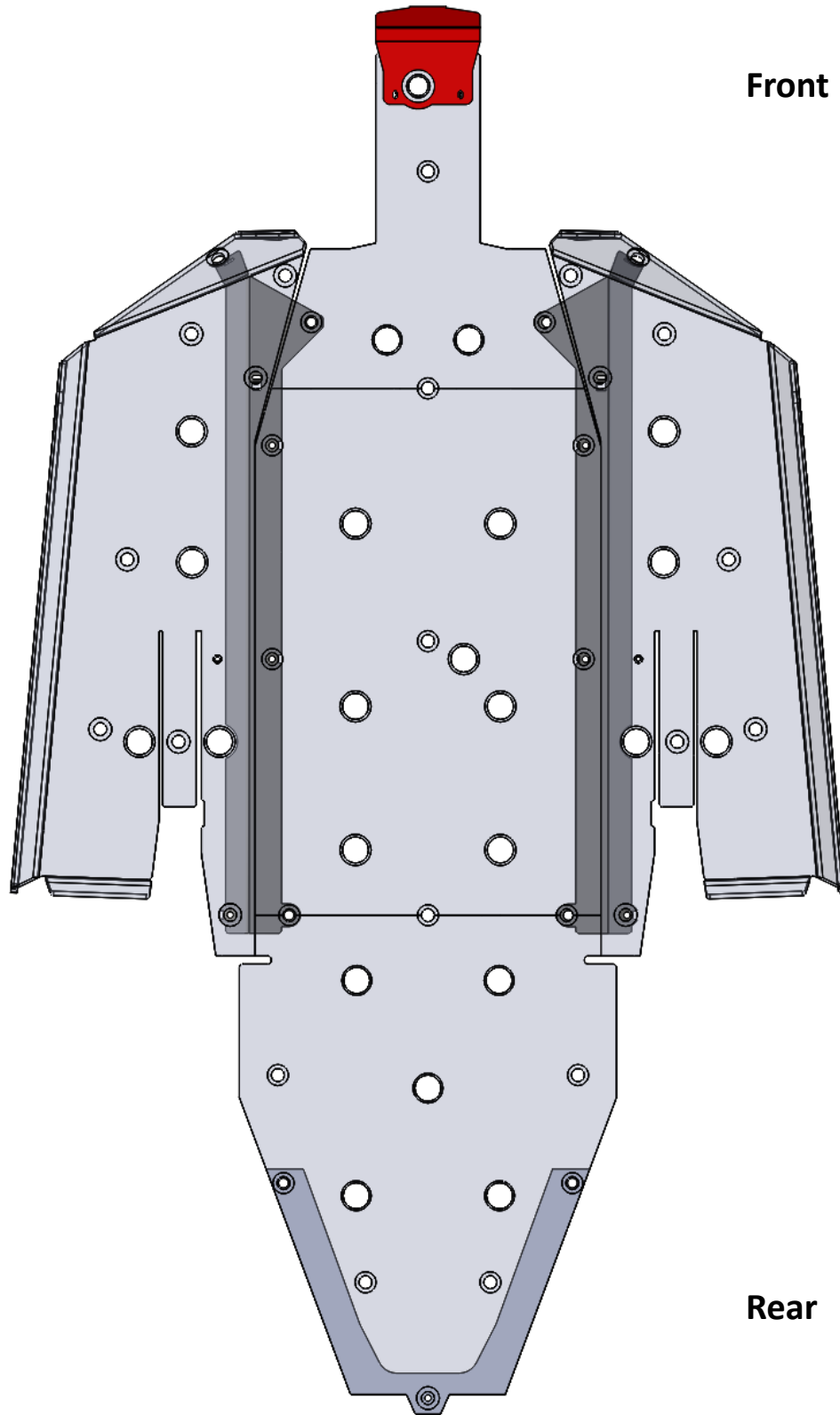
Part # 76-10167



Always observe the warnings and precautions in this manual when using your Seizmik products. For best results, carefully follow the instructions in this manual and make no modifications.

If you have any questions, comments, need assistance, or are missing parts, please call 1-866-838-3366 between 9:00AM and 5:00PM EST. You can email us at support@seizmik.com

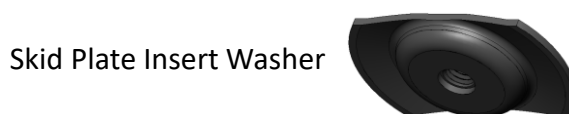
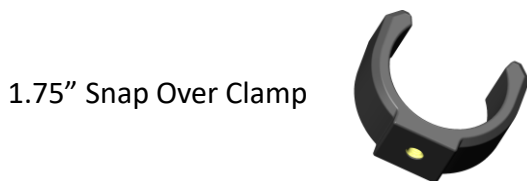
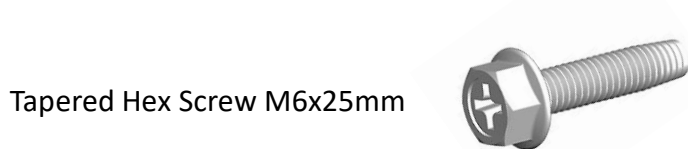
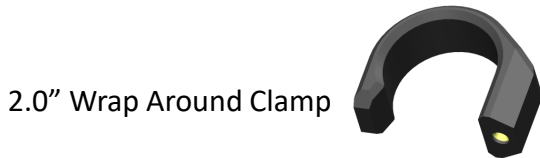
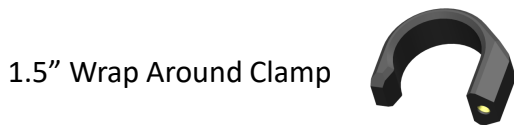
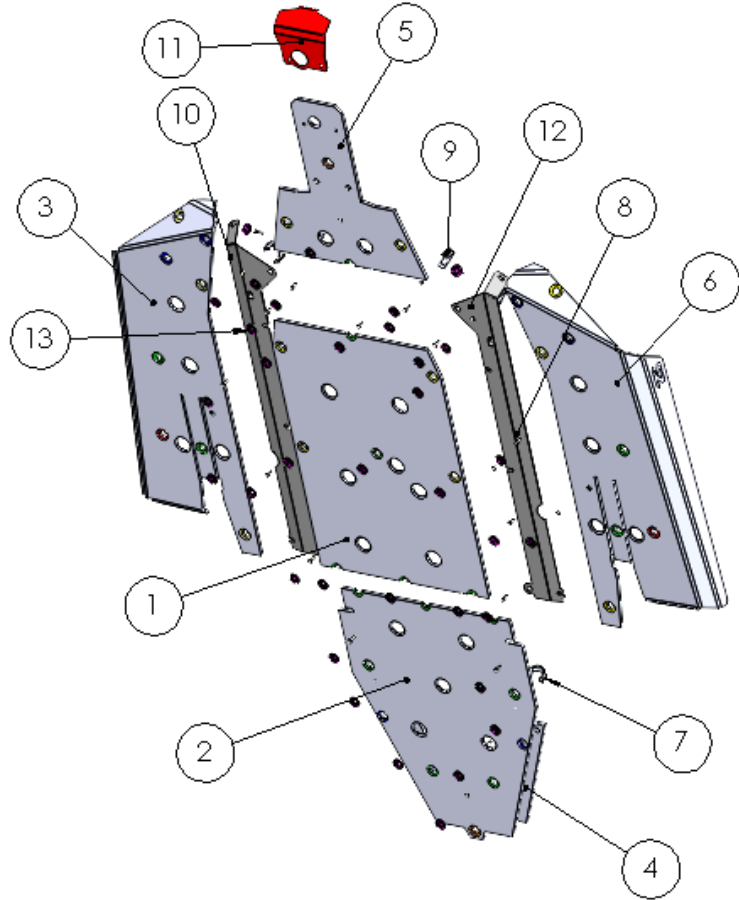
View looking up at the underside of the vehicle



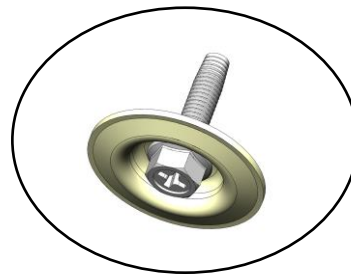
Parts List



ITEM NO.	Description	Part #	QTY.
1	SP_SK01_P2_02 Middle Panel	76-10183	1
2	SP_SK01_P6_02 Rear Panel	76-10184	1
3	SP_SK01_P4_06 Pass Side Panel	76-10185	1
4	SP_SK01_P5_02 Rear Spacer	76-10186	1
5	SP_SK01_P1_02 Front Panel	76-10187	1
6	SP_SK01_P3_06 Driv Side Panel	76-10188	1
7	1.5" Wrap Around Clamp	54-96002	2
8	1.75" Snap Over Clamp	54-96001	2
9	2.00" Wrap Around Clamp	54-96004	4
10	SP_SK01_B2_02 Pass Side Bracket	76-10189	1
11	SP_SK01_B3_02 Front Bash Plate	76-10190	1
12	SP_SK01_B1_02 Driv Side Bracket	76-10191	1
13	Skid Plate Washer	54-96007	35
14	Hex flange screw M6x1.0 x16	99-10001	2
15	M6 Clip Nut	54-96009	10
16	Hex flange screw M6x1.0x30	99-10002	6
17	Nylock flange nut, M6	99-10003	1
18	Insert Washer	54-96008	1
19	M6x25mm tapered Screw	54-96017	21
20	Hex flange screw, M6 x 35mm	99-10006	6
21	Self Tapping Screw M6.3x38mm	54-96015	2
22	Hex flange screw, M8x1.25x16	99-10005	2

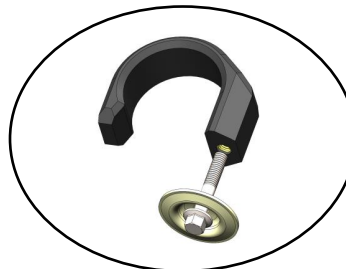


ALL GREEN holes use M6x25mm tapered bolt and washer
Into factory threaded holes unless called out otherwise.

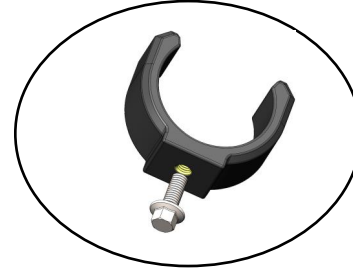


BLUE holes use M6x40mm with wrap around clamp or M6x16mm with snap over clamp.
(Next page specifies clamp locations)

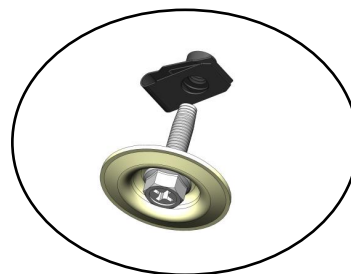
Wrap around



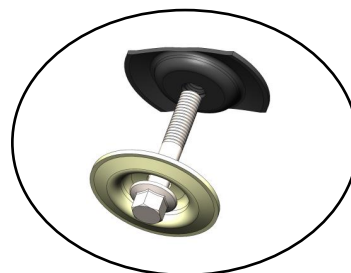
Snap over



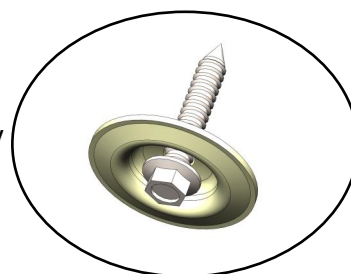
ALL YELLOW holes use M6x25mm tapered bolt and washer into clip nuts attached to metal brackets unless called out otherwise.



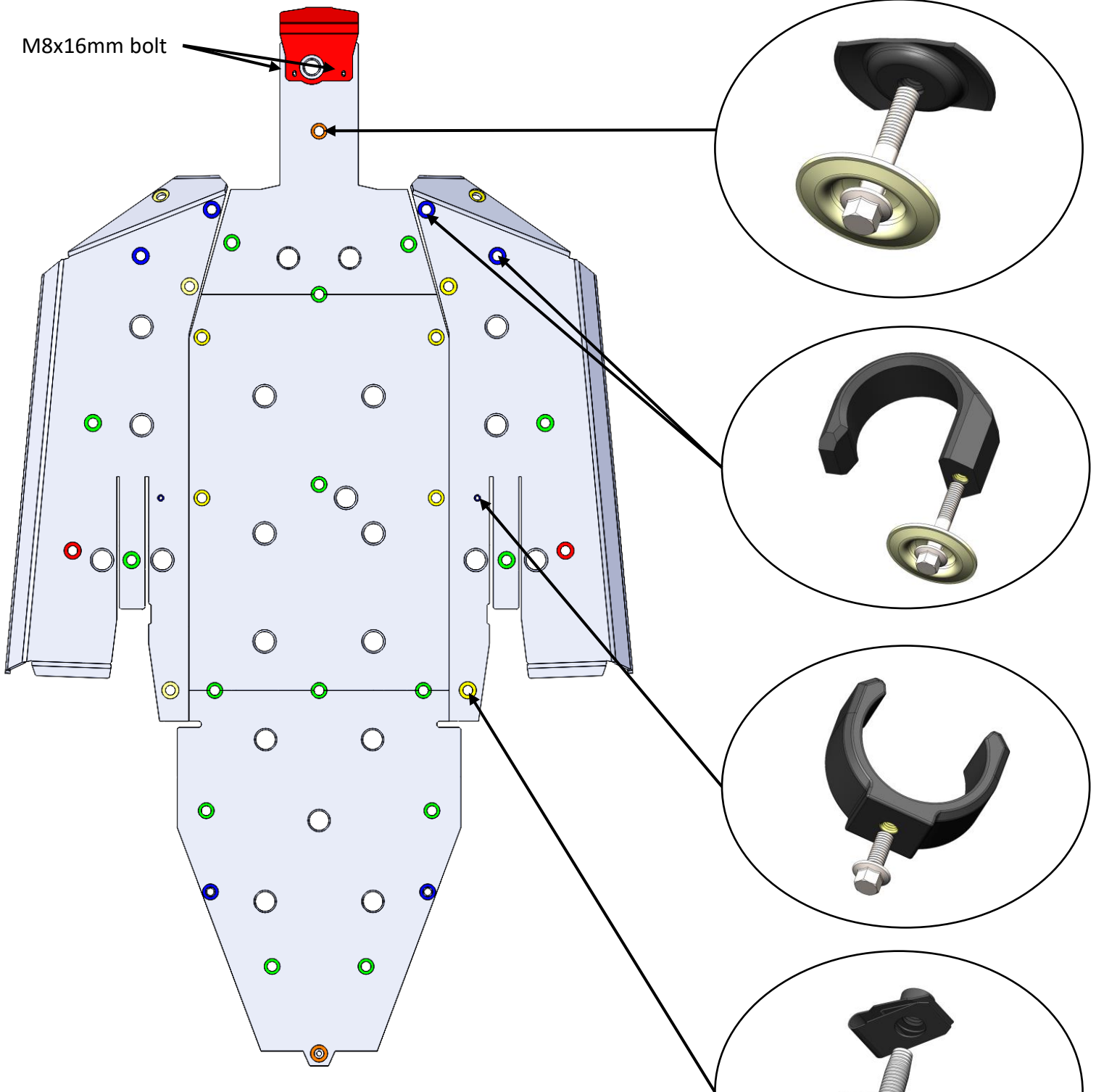
ALL ORANGE holes use M6x40mm flange head bolt and insert washer placed into factory hole in sheet metal unless called out otherwise.








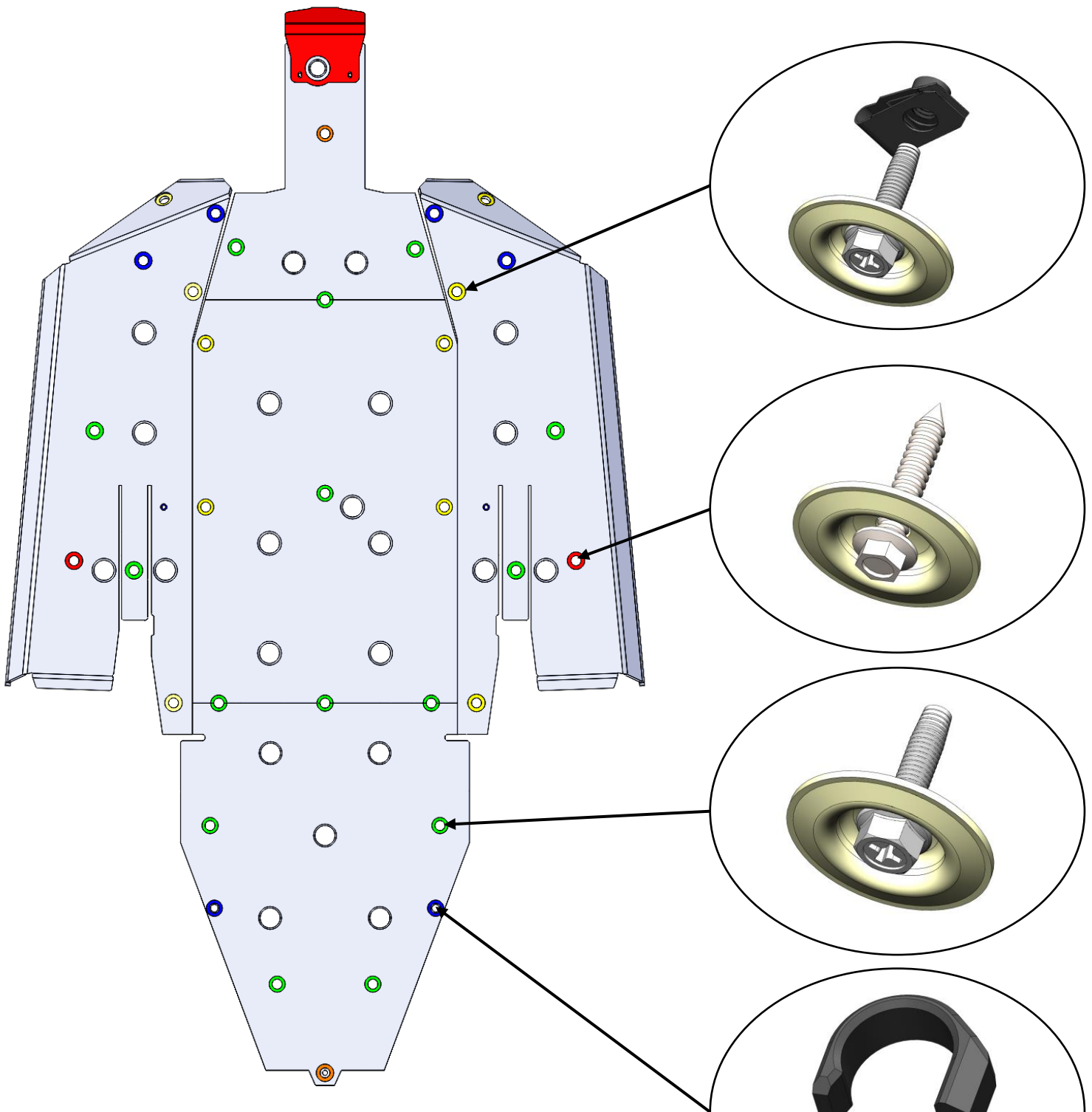
ALL RED holes use Self Tapping Screws- Some locations may or may not require predrilling of 1/8" pilot hole.



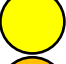




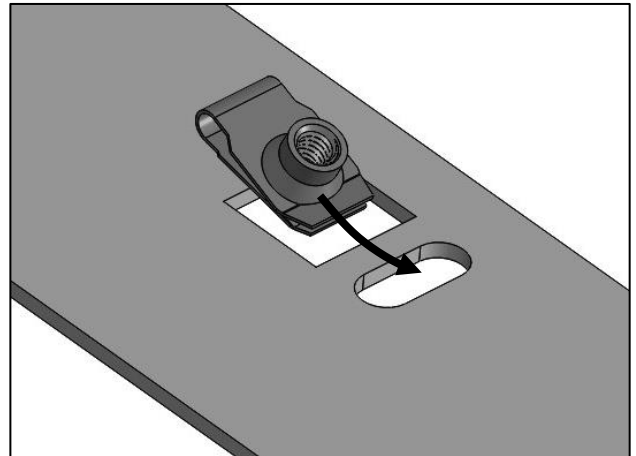
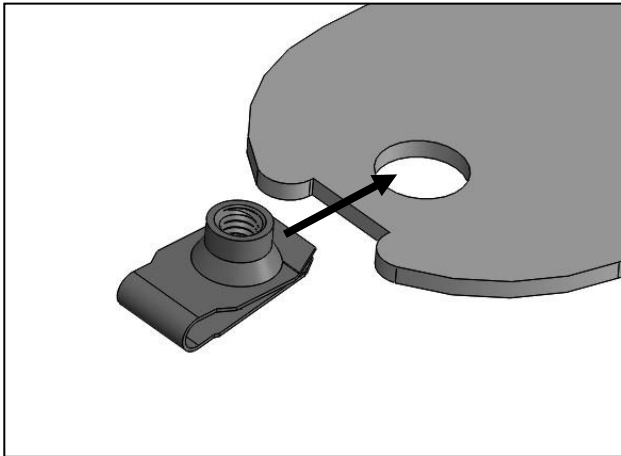
M8x16mm bolt



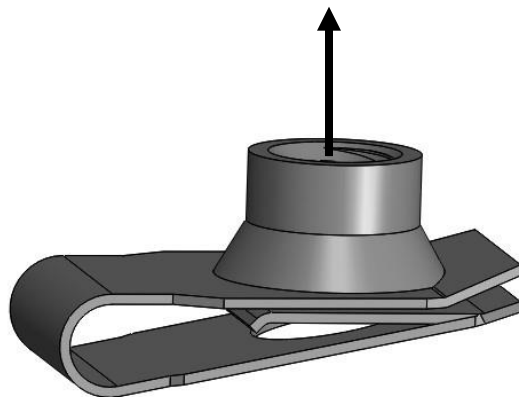
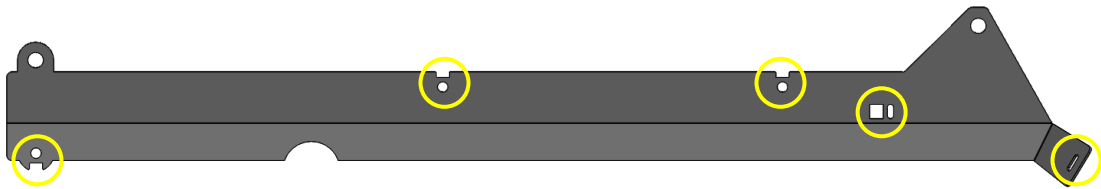
-  Uses OEM Threaded holes
-  Uses Clamps
-  Threads into brackets with clip nuts
-  Uses insert washer or nut
-  Self Tapping Screws-May or may not require predrilling of 1/8" pilot hole



-  Uses OEM Threaded holes
-  Uses Clamps
-  Threads into brackets with clip nuts
-  Uses insert washer or nut
-  Self Tapping Screws-May or may not require predrilling of 1/8" pilot hole

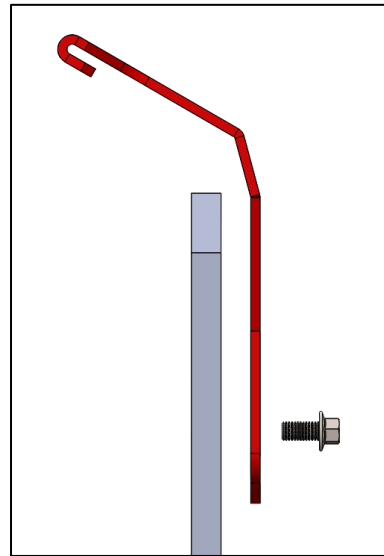
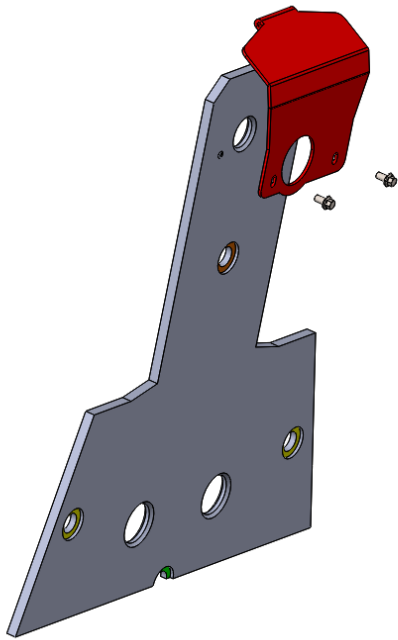


Attach all clip nuts to specified holes in metal brackets.



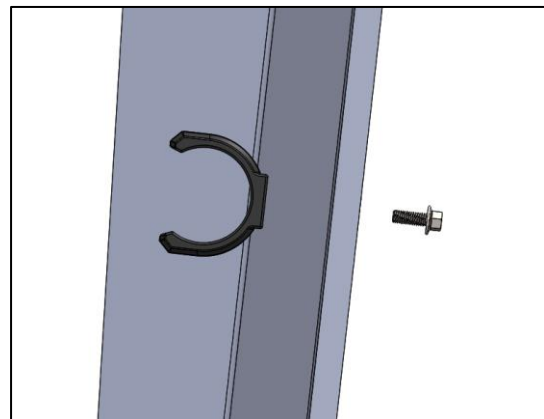
Threading should face upwards, toward vehicle.

Attach bash plate to front panel

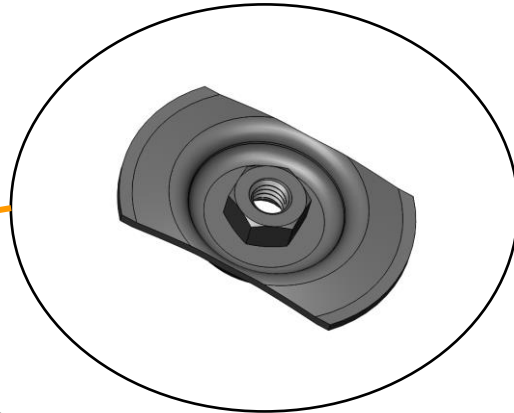
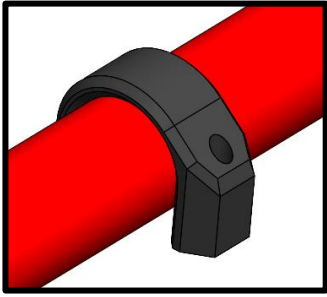


Thread the two M8x16mm bolts through the bash plate and into the front panel

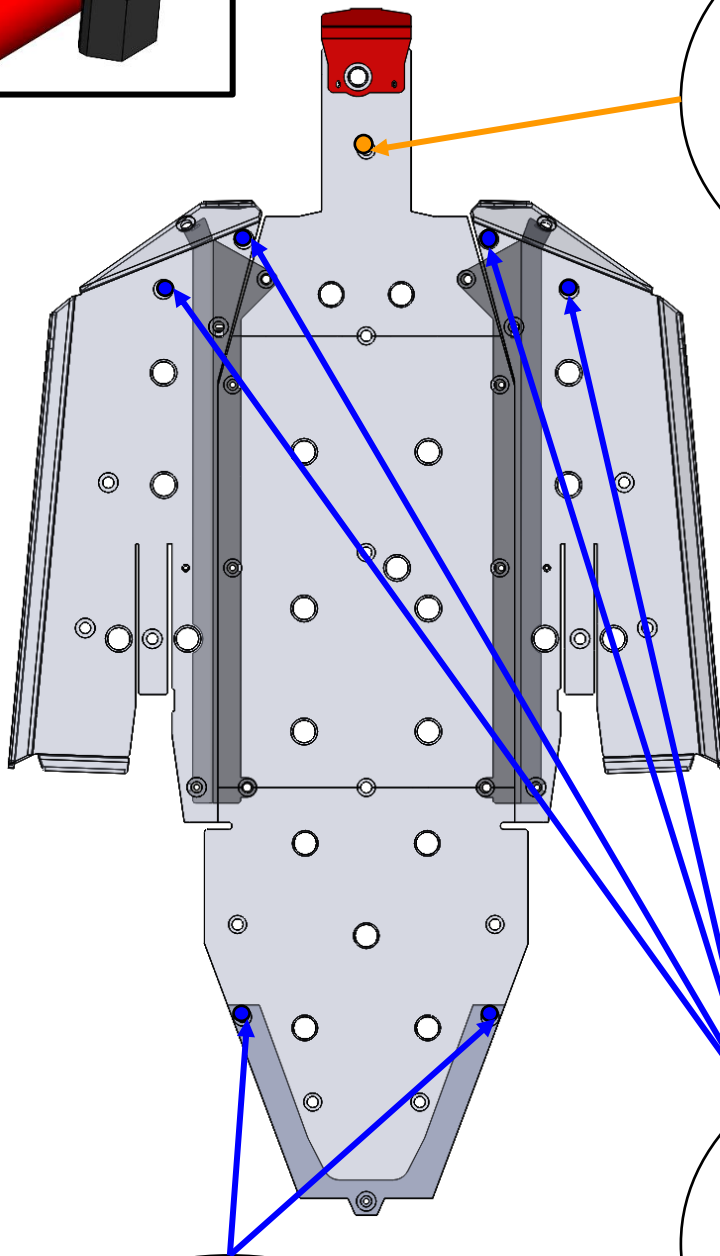
Attach clamp to side panels



Thread M6x16mm bolts through the side panels and into the snap over clamps

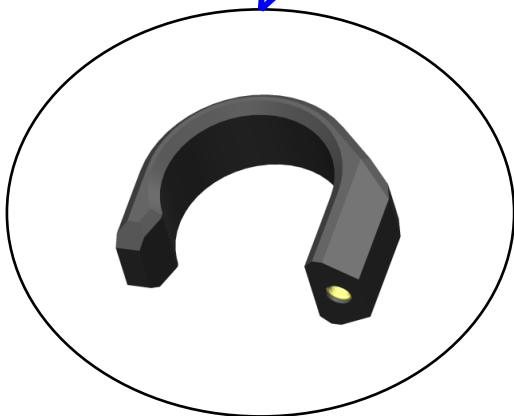


This side of insert washer faces upward, toward vehicle.

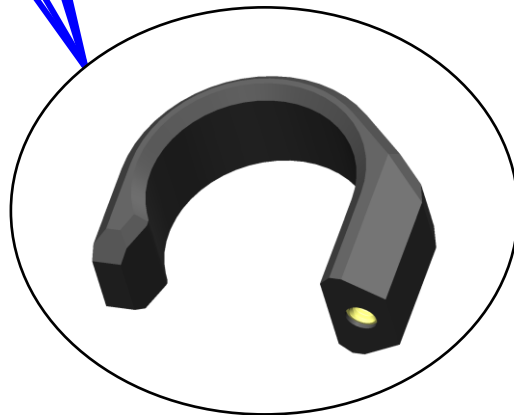


To start, remove stock skid plate. Then, snap clamps around chassis in general locations shown (Shown in BLUE). The threading on the clamps should face **outward**.

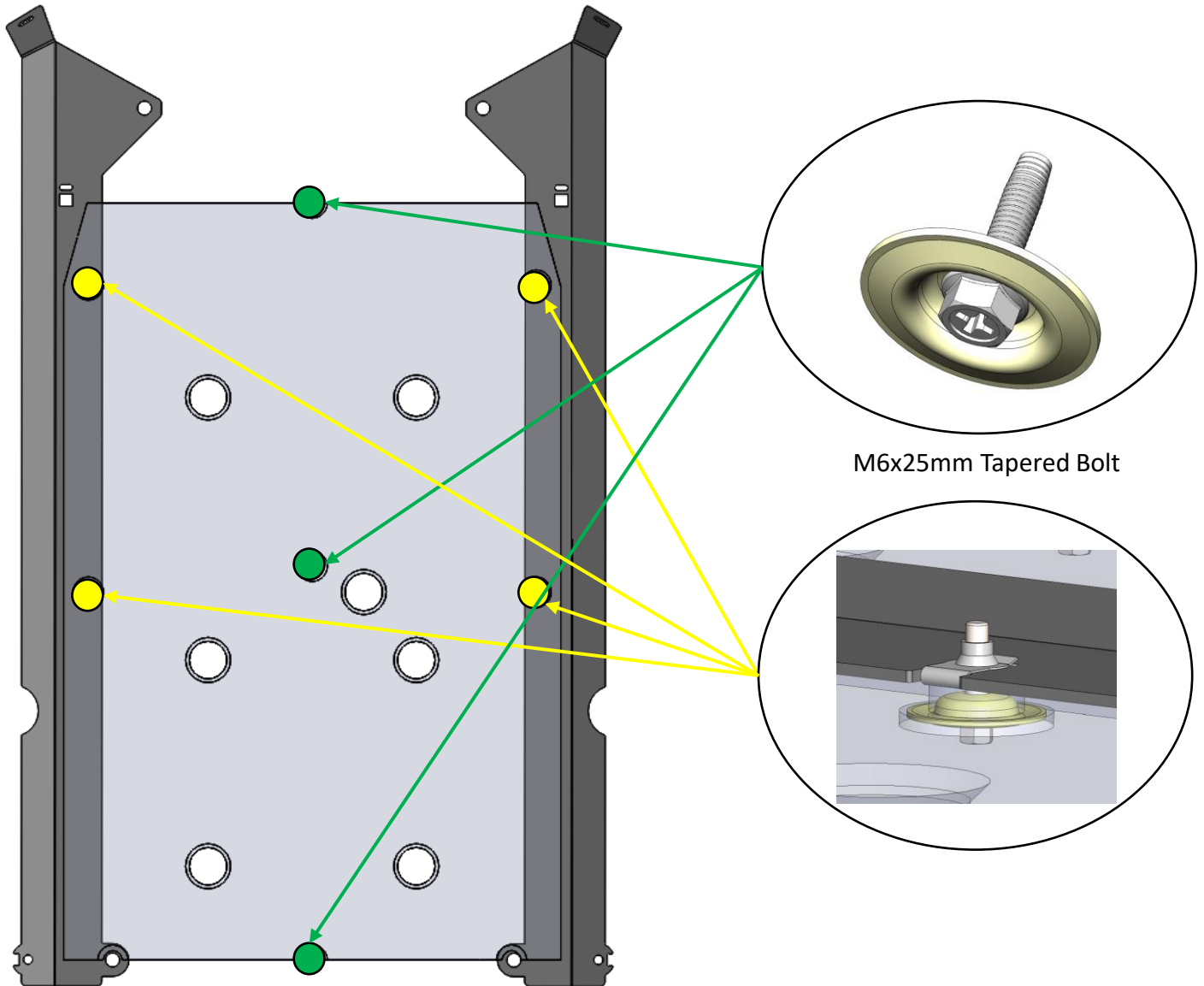
Place insert washers in Sheetmetal holes in vehicle (Shown in ORANGE).



1.5" Wrap Around Clamp
M6x30mm Bolt



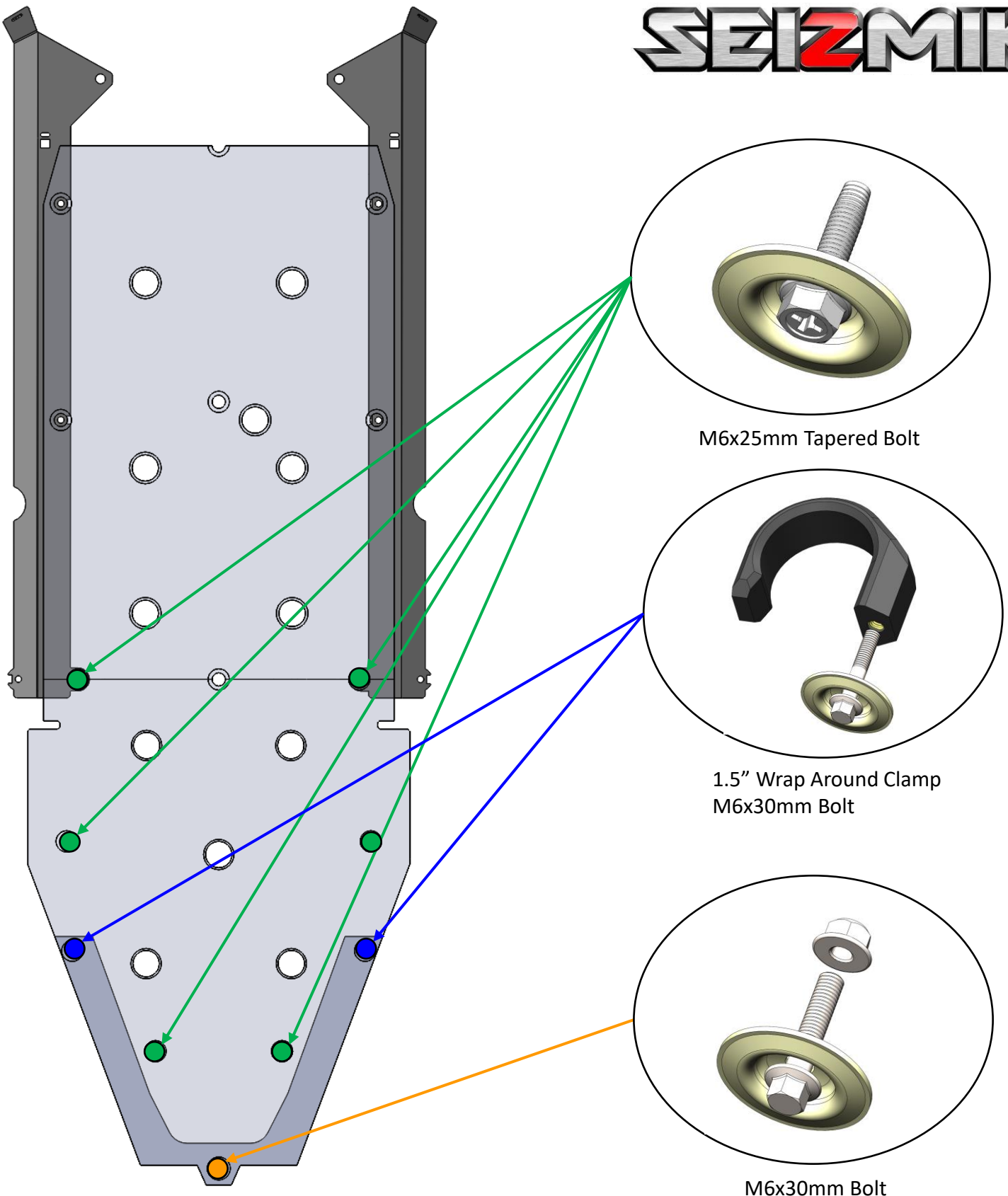
2.0" Wrap Around Clamp
M6x35mm Bolt



M6x25mm Tapered Bolt

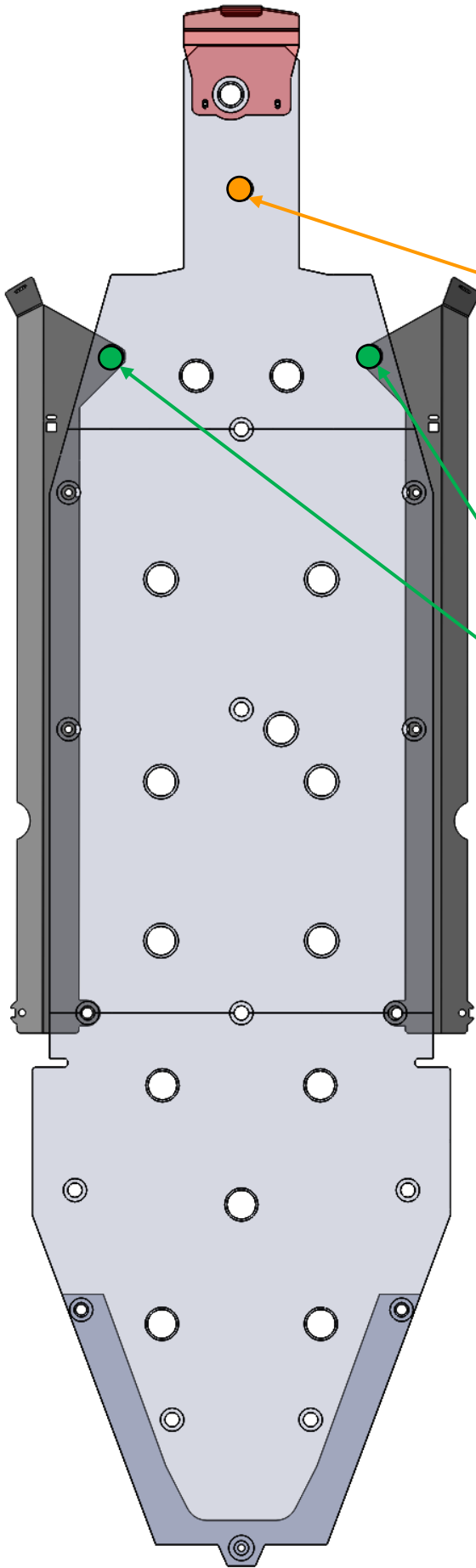
To start, **loosely** install the center 3 bolts and washers (Shown in GREEN) so that the middle panel is held in place on its own.

Next, loosely attach the metal brackets to the middle panel using 4 bolts and washers (Shown in YELLOW) into the clip nuts that you attached to the metal brackets. The metal brackets go between the panels and the vehicle frame. The panels will sandwich the brackets to the underside of the vehicle frame.

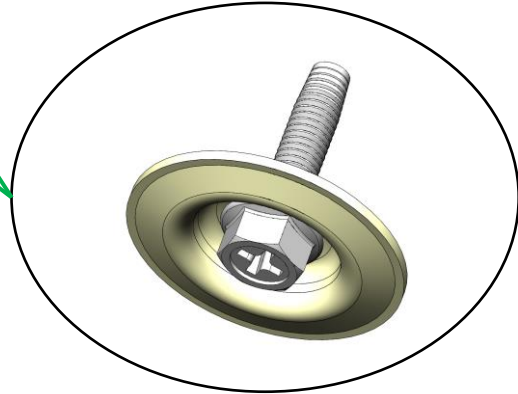


Loosely install the bolts and washers (Shown in GREEN) so that the rear panel is held in place on its own.

Place the rear spacer between the rear panel and the vehicle underbody. Install M6x30mm bolts (Shown in GREEN and ORANGE) through rear panel and rear spacer to secure.



M6x30mm Bolt and Insert washer

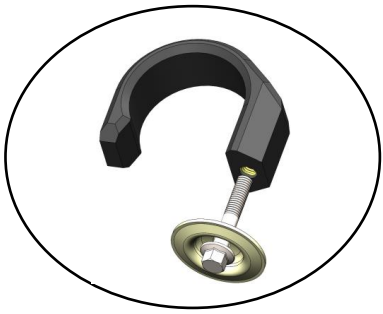


M6x25mm Tapered Bolt

Slide bash plate onto front piece of Sheetmetal (as shown), **loosely** install two bolts and washers (Shown in GREEN). Install M6x30mm bolt into insert washer (Shown in ORANGE).



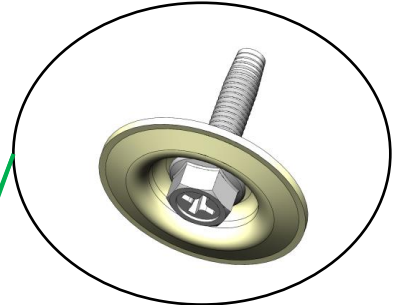
Bash Plate attached to Sheetmetal



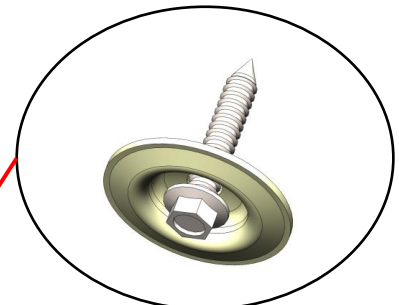
2.0" Wrap Around Clamp
M6x35mm Bolt



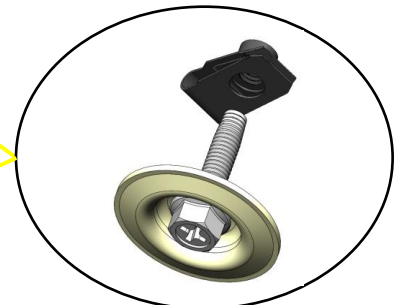
M6x35mm Bolt



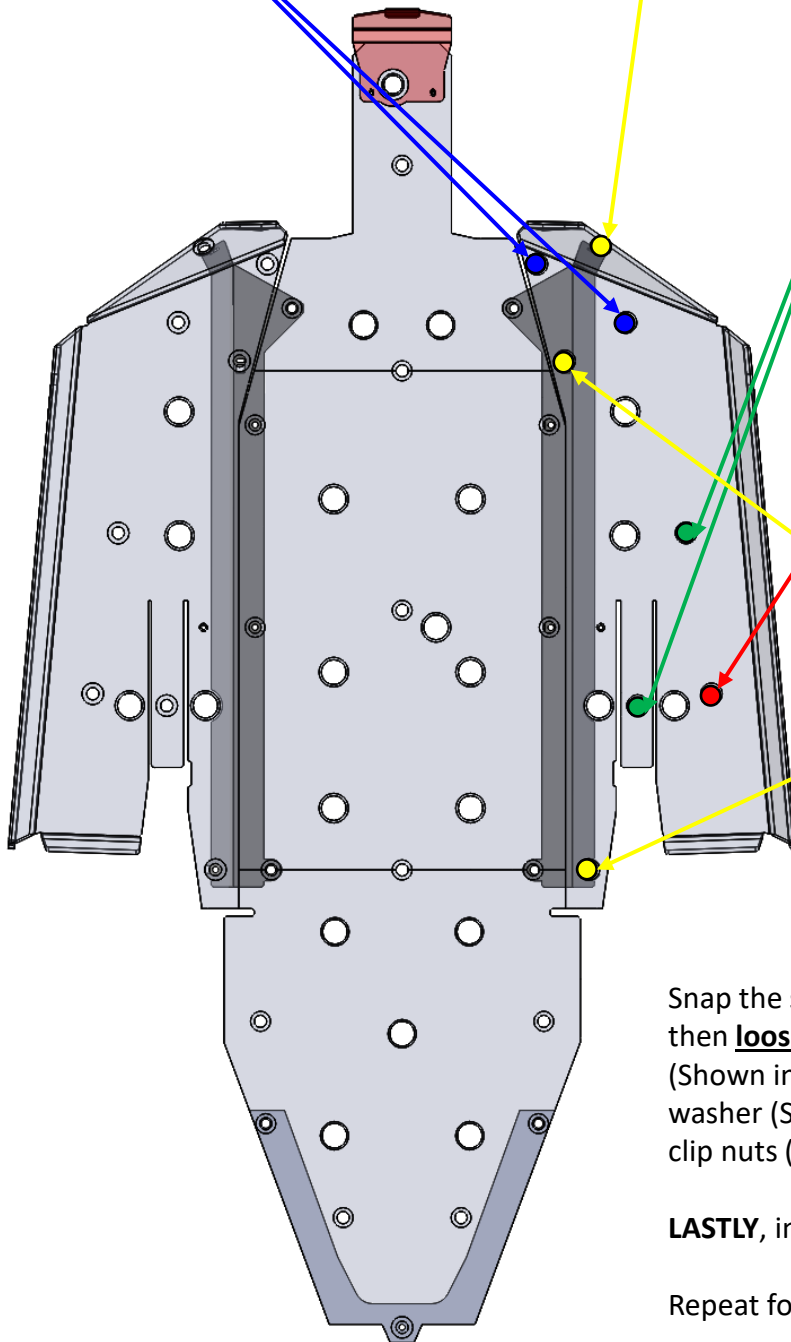
M6x25mm Tapered Bolt



Self Tapping Screw



M6x25mm Tapered Bolt



Snap the snap over clamp (pg. 8) onto the tubing and then **loosely** install all tapered bolts and washer (Shown in GREEN). Then install M6x35mm bolts and washer (Shown in BLUE) and bolts and washers into clip nuts (Shown in YELLOW).

LASTLY, install the self drilling screw (shown in RED)

Repeat for other side. Tighten all bolts.