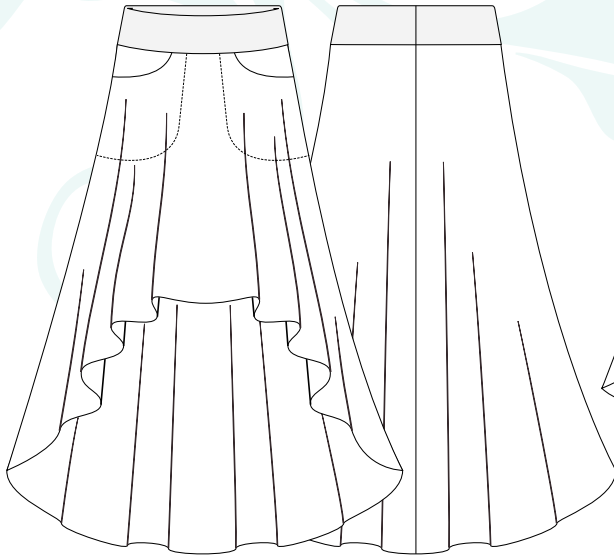


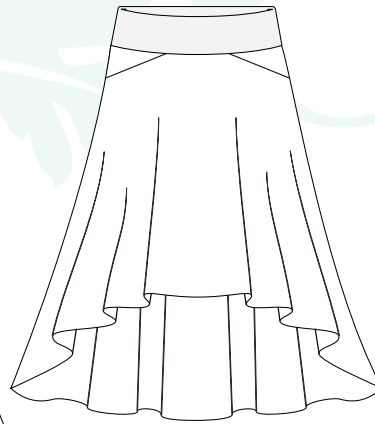
Starlight HiLo with Pockets

Ladies Stretch Knit Skirt

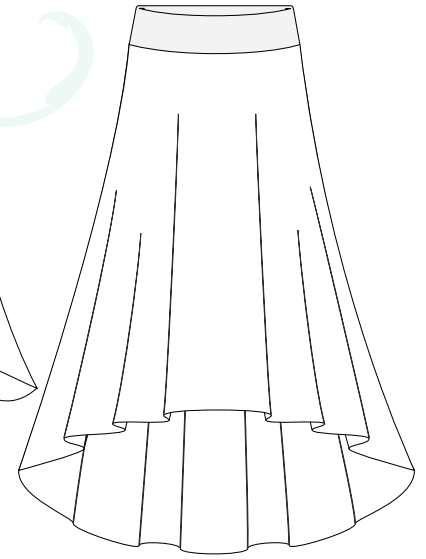
Extreme



Party



Subtle



THE STARLIGHT HiLo KNIT SKIRT features a raised front & lowered back hemline in an A-line silhouette in 3 different styles... & **POCKETS!**

STYLES: There are 3 styles to choose from to create different looks:

Extreme HiLo features a knee length front & maxi back.

Subtle HiLo features a midi front & maxi back.

Party HiLo features an above knee front & below knee back.

LENGTHS: Within each style are 3 cutting lengths: short, regular or tall.

WAISTBANDS: There are 3 waistbands to choose from:

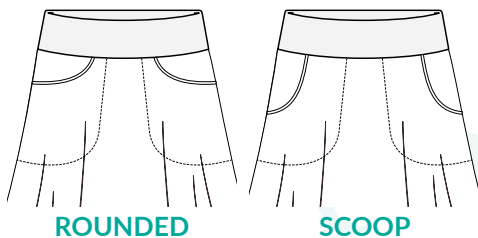
Stretch Knit Waistband gently hugs the body around the stomach.

Fold-Over Yoga Waistband is double the width of the Stretch Knit Waistband. You can wear it as a wide panel or fold it over for double support over the tummy.

Enclosed Waistband features a fabric covered elastic waistband: a great option if your fabric doesn't have elastane or good recovery.

POCKETS: There are 2 pocket styles, Stitched & Jean-style, & 3 pocket openings: Rounded, Scoop & Diagonal.

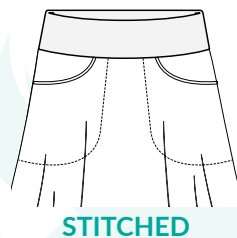
3 Pocket Openings



ROUNDED

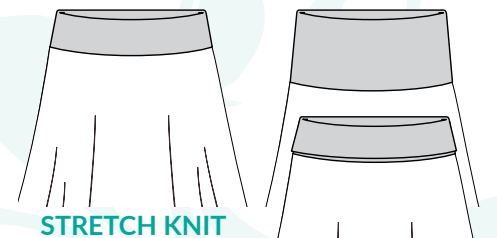
SCOOP

2 Pocket Styles



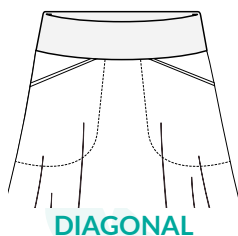
STITCHED

3 Waistband Options



STRETCH KNIT

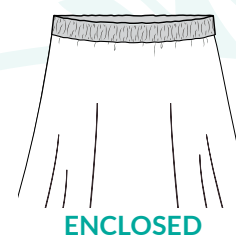
FOLD-OVER YOGA



DIAGONAL



JEAN-STYLE



ENCLOSED