



Wanderlust Dress

Pattern Hack: Add A Cuff

Size 6-22

PDF SEWING PATTERN

PE1705

EXPERIENCED BEGINNER





During testing, Katy Lam (My China Doll) did a little pattern hacking, adding a cuff to her long sleeved Wanderlust Dress.

Here's how it's done.



PATTERN: Wanderlust Dress

PATTERN HACK: Add a cuff to the long slimline sleeve.

PATTERN ALTERATION: Based on the cuff provided, I recommend shortening the sleeve by 6cm (2 3/8").

Note: Adjust accordingly if you found the sleeve too long/short during your fit test.

PATTERN PIECE: See page 4. The finished length of this cuff is 6cm (2 3/8").

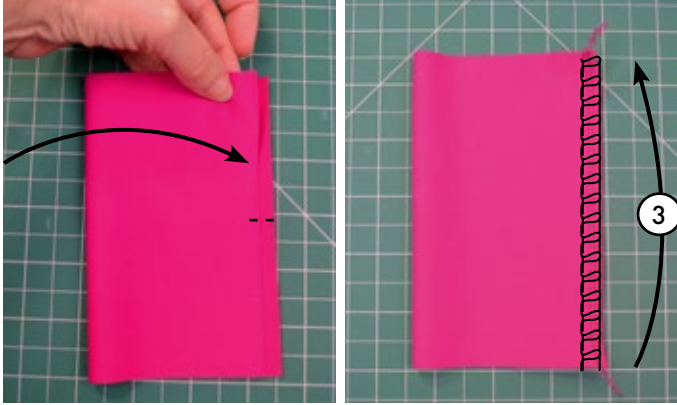
SKILL LEVEL: It can be a bit tricky overlocking (serging) neatly & evenly around the cuff. If you're new to knit cuffs I recommend having a **practice first**.

SEWING INSTRUCTIONS:

Repeat the following steps for both cuffs/sleeves.

1. Follow the main tutorial, Steps 1-11.
2. With right sides together, **fold** cuff in half, matching the notches.

Overlock along the edge, forming a loop.



3. With wrong sides together, **fold** cuff in half, raw edges aligned.

Mark halfway with a pin or pen. **Mark** halfway on the sleeve opening too.



4. With right sides together, **place** the sleeve inside the folded cuff, raw edges aligned.

Align & pin the seams & the marked halfway points.



5. **Overlock** (serge) around the sleeve hem, attaching the cuff.

Make sure you stretch & distribute the bands evenly as you sew



6. Iron (with steam) any waves out of the seam. Use a cloth to avoid melting your fabric!



REMEMBER to set your printer to print 'Actual Size'. Scaling is set to 'None'.

