

# Trapeze Trio: Long Top, Tunic & Dress

The Trapeze Trio is an easy fit, swing-style long top, tunic & dress designed for stretch knit fabrics.

## Features:

- Swing silhouette
- Fit & flare from bust line
- Banded neckline
- Slimline sleeves
- Maternity friendly design

## Mix & match lengths, necklines & sleeves

### 3 Lengths

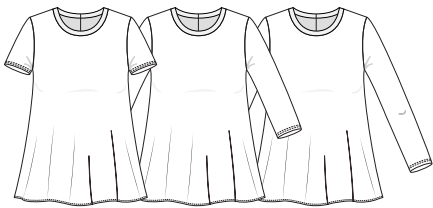
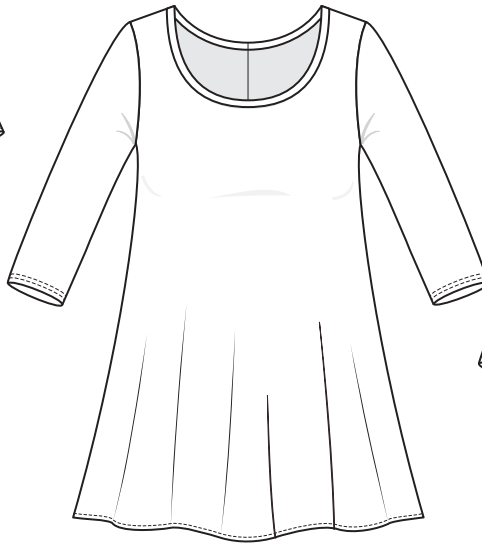
- Long Top
- Tunic
- Dress

### 3 Necklines

- Crew Neck
- Round Neck
- Scoop Neck

### 3 Sleeves

- Short
- 3/4
- Long



## BODY MEASUREMENTS:

For this style, use 'Upper Bust' measurement to determine size. More size & fit information can be found on page 4.

		AU SIZE	6	8	10	12	14	16	18	20	22
A	UPPER BUST Measure around chest at underarm level, above the bust (no bra)	cms (range)	77 (77-79)	80 (80-84)	85 (85-88)	89 (89-92)	93 (93-97)	97.5 (97.5-100)	101 (101-104)	105 (105-109)	110 (110-115)
		inches	30 3/8 (30 3/8-31)	31 1/2 (31 1/2-33)	33 1/2 (33 1/2-34 1/2)	35 (35-36 1/4)	36 5/8 (36 5/8-38)	38 1/2 (38-39 1/4)	39 3/4 (39 3/4-40 3/4)	41 1/4 (41 1/2-42 3/4)	43 1/4 (43 1/4-45)
B	BUST Measure around chest at bust level (bra is fine, just not heavily padded)	cms	75 75-79	80 80-84	85 85-89	90 90-94	95 95-99	100 100-104	105 105-109	110 110-114	115 115-120
		inches	29 1/2 29 1/2-31	31 1/2 31 1/2-33	33 1/2 33 1/2-35	35 3/8 35 3/8-37	37 3/8 37 3/8-39	39 3/8 39 3/8-41	41 3/8 41 3/8-43	43 1/4 43 1/4-45	45 1/4 45 1/4-47
C	WAIST	cms inches	60 23 5/8	65 25 5/8	70 27 1/2	75 29 1/2	80 31 1/2	85 33 1/2	90 35 3/8	95 37 1/2	100 39 3/8
D	HIP/SEAT	cms inches	85 33 1/2	90 35 3/8	95 37 3/8	100 39 3/8	105 41 3/8	110 43 1/4	115 45 1/4	120 47 1/4	125 49 1/4

## FINISHED GARMENT MEASUREMENTS:

Garment length (E-G) is measured from centre of shoulder to hem. Sleeve length (H-J) is measured from shoulder seam to hem.

		AU SIZE	6	8	10	12	14	16	18	20	22
E	LONG TOP	cms	68	69	70	71	72	73	74	75	76
		inches	26 3/4	27 1/8	27 4/8	28	28 3/8	28 3/4	29 1/8	29 4/8	30
F	TUNIC	cms	80.5	81.5	82.5	83.5	84.5	85.5	86.5	87.5	88.5
		inches	31 3/4	32 1/8	32 4/8	32 7/8	33 2/8	33 3/4	34	34 4/8	34 3/4
G	DRESS	cms	90.5	91.5	92.5	93.5	94.5	95.5	96.5	97.5	98.5
		inches	35 5/8	36	36 1/2	36 3/4	37 2/8	37 5/8	38	38 1/2	38 3/4
H	LONG SLEEVE	cms	56.5	57	57.5	58	58.5	59	59.5	60	60.5
		inches	22	22 1/2	22 1/2	23	23	23 2/8	23 3/8	23 5/8	23 3/4
I	3/4 SLEEVE	cms	42.5	43	43.5	44	44.5	45	45.5	46	46.5
		inches	16 3/4	17	17 1/4	17 1/4	17 2/4	17 3/4	18	18	18 1/4
J	SHORT SLEEVE	cms	16.5	17	17.5	18	18.5	19	19.5	20	20.5
		inches	6 2/4	6 3/4	7	7	7 1/4	7 2/4	7 3/4	7 3/4	8

## FABRIC REQUIREMENTS: METRES/YARDS

**FABRIC WIDTH: 145cm (57")**

**FULL BUST ADJUSTMENT:** If your measurements require a Full Bust Adjustment, purchase the quantity of fabric required for the size (or 2) above.

**EXCEPTIONS:** Fabric allowance doesn't take into account shrinkage\*, directional fabric, stripes or obvious patterns that may require pattern matching. Ensure you purchase extra. Rayon, in particular, can shrink quite a bit when washed. Always pre-wash your fabrics.

**WITH CENTRE BACK SEAM :** These measurements are based on the Long & 3/4 Sleeve options.

Subtract 40cm (15 inches or approximately 1/4 yard) for short sleeves.

		AU SIZE	6	8	10	12	14	16	18	20	22
LONG TOP	mtr	1.3	1.4	1.4	1.4	1.4	1.4	1.4	1.5	1.5	1.6
	yard	1 2/4	1 2/4	1 2/4	1 2/4	1 2/4	1 2/4	1 2/4	1 3/4	1 3/4	1 3/4
TUNIC	mtr	1.5	1.5	1.5	1.6	1.6	1.6	1.6	1.7	1.7	1.8
	yard	1 3/4	1 3/4	1 3/4	1 3/4	1 3/4	1 3/4	1 3/4	1 3/4	1 3/4	2
DRESS	mtr	1.6	1.6	1.6	1.7	1.7	1.8	1.8	1.9	1.9	2.0
	yard	1 3/4	1 3/4	1 3/4	1 3/4	1 3/4	2	2	2	2	2 1/4

### WITHOUT CENTRE BACK SEAM

LONG TOP	mtr	1.6	1.6	1.6	1.7	1.7	1.7	1.7	1.8	1.8	1.8
	yard	1 3/4	1 3/4	1 3/4	1 3/4	1 3/4	1 3/4	1 3/4	2	2	2
TUNIC	mtr	1.9	1.9	1.9	1.9	1.9	2	2	2	2	2
	yard	2	2	2	2	2	2 1/4	2 1/4	2 1/4	2 1/4	2 1/4
DRESS	mtr	2.1	2.1	2.1	2.1	2.1	2.2	2.2	2.2	2.2	2.2
	yard	2 1/4	2 1/4	2 1/4	2 1/4	2 1/4	2 2/4	2 2/4	2 2/4	2 2/4	2 2/4