

In My Stride LADIES SKIRT BY PATTERN EMPORIUM

FABRIC, TRIMS, TOOLS & SUPPLIES

SUITABLE FABRIC:

This skirt is designed for stretch knit fabrics.

STRETCH:

4-way stretch knit fabrics.

STRETCH FACTOR:

40-75% horizontal stretch & a minimum of 10% vertical stretch.

For horizontal stretch that is less than 40%, I recommend sizing up for a comfortable fit.

TO LEARN MORE about stretch factor, visit 'Tips & Tricks' on the website.

USING NON-RECOMMENDED FABRICS:

2-way stretch knit fabrics with vertical 'give' can be used BUT remember that this pattern was designed for the special properties of a 4-way stretch knit fabric.

Fabrics without elastane (lycra/spandex) & with limited vertical stretch will sit shorter on the body when worn & will not fit the same as a 4-way stretch knit fabric. The same applies to stretch woven fabrics.

STRETCH FABRICS

- ✓ Ponte
- ✓ Cotton Lycra
- ✓ Swimwear Spandex
- ✓ Viscose or Rayon Elastane
- ✓ Modal Elastane
- ✓ Bamboo Elastane
- ✓ Double Brushed Poly
- ✓ Merino Wool Knit
- ✓ Stretch Velvet (velour)
- ✓ Liverpool
- ✓ Poly Elastane Jersey
- ✓ Stretch Crepe
- ✓ French Terry

TRIMS

- ✓ 40mm (1.5") elastic

TOOLS

- ✓ Scissors or Rotary Blade & Cutting Mat
- ✓ Pins
- ✓ Sewing Machine
- ✓ Overlocker / Serger
- ✓ Iron & Board
- ✓ Printer
- ✓ Paper - A4 or Letter
- ✓ Stretch Needle

OPTIONAL TOOLS

- ✓ Coverstitch Machine

SUPPLIES

- ✓ Stretch Fabric
- ✓ Thread to Match

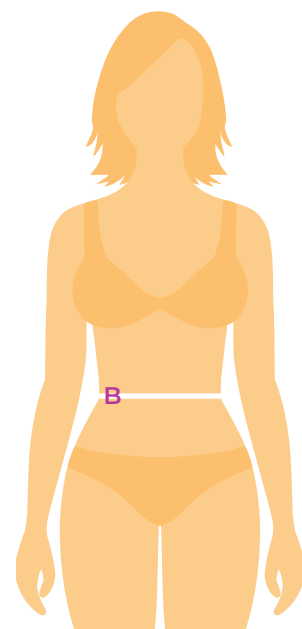
TRIM REQUIREMENTS

Elastic Width 40mm (1.5")

ELASTIC CUSTOM FORMULA

Natural Waist
+ 1cm (3/8")

ALWAYS TRY ELASTIC ON
BEFORE SEWING IT.

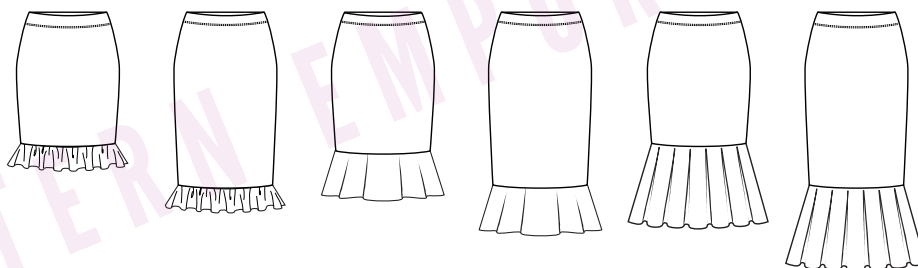


AU SIZE		6	8	10	12	14	16	18	20	22	24
B NATURAL WAIST	CM	60	65	70	75	80	85	90	95	100	105
	INCH	23 1/2	25 1/2	27 1/2	29 1/2	31 1/2	33 1/2	35 1/2	37 1/2	39 1/2	41 1/2
40mm (1.5") ELASTIC	CM	61	66	71	76	81	86	91	96	101	106
	INCH	24	26	28	30	32	33 3/4	35 3/4	37 3/4	39 3/4	41 3/4

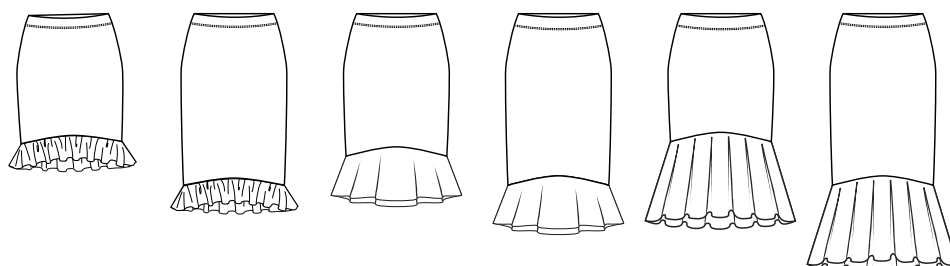
In My Stride LADIES SKIRT BY PATTERN EMPORIUM

FABRIC REQUIREMENTS Fabric Width 150cm (59")

AU SIZE			6	8	10	12	14	16	18	20	22	24	
STRAIGHT CUT SKIRT	KNEE LENGTH	SWEET RUFFLE	MTR	0.6	0.6	1.1	1.1	1.1	1.1	1.1	1.2	1.2	1.2
		YARD	3/4	3/4	1 1/4	1 1/4	1 1/4	1 1/4	1 1/4	1 1/4	1 1/4	1 1/4	1 1/4
	CLASSIC FLOUNCE	MTR	1.1	1.1	1.1	1.1	1.1	1.1	1.1	1.1	1.5	1.5	1.5
		YARD	1 1/4	1 1/4	1 1/4	1 1/4	1 1/4	1 1/4	1 1/4	1 1/4	1 3/4	1 3/4	1 3/4
	VA-VA-VOOM	MTR	1.2	1.3	1.3	1.4	1.6	1.6	1.6	1.6	2.3	2.3	2.3
		YARD	1 1/4	1 1/2	1 1/2	1 1/2	1 3/4	1 3/4	1 3/4	1 3/4	2 1/2	2 1/2	2 1/2
MIDI LENGTH	SWEET RUFFLE	MTR	0.7	0.7	1.2	1.3	1.3	1.3	1.3	1.3	1.4	1.4	
		YARD	3/4	3/4	1 1/4	1 1/2	1 1/2	1 1/2	1 1/2	1 1/2	1 1/2	1 1/2	
	CLASSIC FLOUNCE	MTR	1.2	1.2	1.4	1.4	1.4	1.4	1.4	1.4	1.6	1.6	1.6
		YARD	1 1/4	1 1/4	1 1/2	1 1/2	1 1/2	1 1/2	1 1/2	1 1/2	1 3/4	1 3/4	1 3/4
	VA-VA-VOOM	MTR	1.4	1.4	1.4	1.5	1.6	1.6	1.6	1.6	2.4	2.4	2.5
		YARD	1 1/2	1 1/2	1 1/2	1 3/4	1 3/4	1 3/4	1 3/4	1 3/4	2 1/2	2 1/2	2 3/4



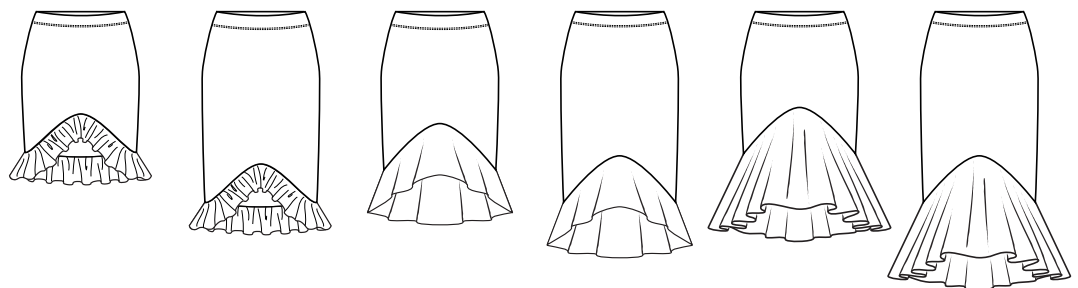
AU SIZE			6	8	10	12	14	16	18	20	22	24	
SUBTLE HILO	KNEE LENGTH	SWEET RUFFLE	MTR	0.6	0.6	1.1	1.1	1.1	1.1	1.1	1.2	1.2	1.2
		YARD	3/4	3/4	1 1/4	1 1/4	1 1/4	1 1/4	1 1/4	1 1/4	1 1/4	1 1/4	1 1/4
	CLASSIC FLOUNCE	MTR	1.1	1.1	1.1	1.1	1.1	1.1	1.1	1.1	1.5	1.5	1.5
		YARD	1 1/4	1 1/4	1 1/4	1 1/4	1 1/4	1 1/4	1 1/4	1 1/4	1 3/4	1 3/4	1 3/4
	VA-VA-VOOM	MTR	1.2	1.3	1.3	1.4	1.6	1.6	1.6	1.6	2.2	2.2	2.2
		YARD	1 1/4	1 1/2	1 1/2	1 1/2	1 3/4	1 3/4	1 3/4	1 3/4	2 1/2	2 1/2	2 1/2
MIDI LENGTH	SWEET RUFFLE	MTR	0.7	0.7	1.2	1.2	1.2	1.3	1.3	1.3	1.3	1.3	
		YARD	3/4	3/4	1 1/4	1 1/4	1 1/4	1 1/2	1 1/2	1 1/2	1 1/2	1 1/2	
	CLASSIC FLOUNCE	MTR	1.2	1.2	1.4	1.4	1.4	1.4	1.4	1.4	1.6	1.6	1.6
		YARD	1 1/4	1 1/4	1 1/2	1 1/2	1 1/2	1 1/2	1 1/2	1 1/2	1 3/4	1 3/4	1 3/4
	VA-VA-VOOM	MTR	1.4	1.4	1.4	1.5	1.6	1.6	1.6	1.6	2.4	2.4	2.4
		YARD	1 1/2	1 1/2	1 1/2	1 3/4	1 3/4	1 3/4	1 3/4	1 3/4	2 1/2	2 1/2	2 1/2



FABRIC REQUIREMENTS Continued...

Fabric Width 150cm (59")

AU SIZE			6	8	10	12	14	16	18	20	22	24
DRAMATIC HILO SKIRT												
KNEE LENGTH	SWEET RUFFLE	MTR	0.6	0.7	1.1	1.1	1.1	1.1	1.1	1.1	1.1	1.1
		YARD	3/4	3/4	1 1/4	1 1/4	1 1/4	1 1/4	1 1/4	1 1/4	1 1/4	1 1/4
	CLASSIC FLOUNCE	MTR	1.1	1.1	1.1	1.1	1.4	1.4	1.4	1.5	1.5	1.5
		YARD	1 1/4	1 1/4	1 1/4	1 1/4	1 1/2	1 1/2	1 1/2	1 3/4	1 3/4	1 3/4
	VA-VA-VOOM	MTR	1.2	1.4	1.4	1.4	1.6	1.6	1.6	2.1	2.1	2.2
		YARD	1 1/4	1 1/2	1 1/2	1 1/2	1 3/4	1 3/4	1 3/4	2 1/4	2 1/4	2 1/2
MIDI LENGTH	SWEET RUFFLE	MTR	0.7	0.9	1.2	1.2	1.2	1.2	1.2	1.3	1.3	1.3
		YARD	3/4	1	1 1/4	1 1/4	1 1/4	1 1/4	1 1/4	1 1/2	1 1/2	1 1/2
	CLASSIC FLOUNCE	MTR	1.2	1.2	1.4	1.4	1.6	1.6	1.6	1.7	1.7	1.7
		YARD	1 1/4	1 1/4	1 1/2	1 1/2	1 3/4	1 3/4	1 3/4	1 3/4	1 3/4	1 3/4
	VA-VA-VOOM	MTR	1.4	1.4	1.4	1.5	1.6	1.6	1.6	2.3	2.3	2.3
		YARD	1 1/2	1 1/2	1 1/2	1 3/4	1 3/4	1 3/4	1 3/4	2 1/2	2 1/2	2 1/2



DIRECTIONAL & NAP FABRICS: For example, stretch velvet. These are NOT accounted for in this estimate. You will need extra fabric as your pattern pieces will all need to be placed in the same direction.

SHRINKAGE: Shrinkage is NOT accounted for in the above estimate. When washed, some fabrics (like rayon) shrink a lot, others hardly shrink at all. Always order more than the requirements & always pre-wash before cutting to avoid your garment being too short or small.