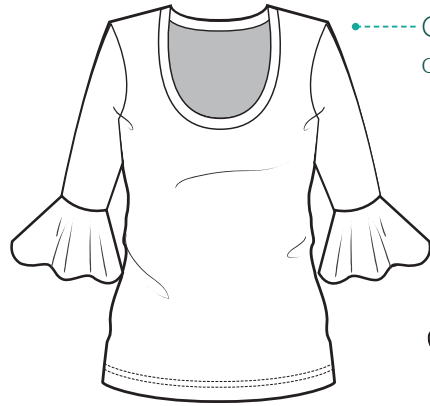


Allure Bell Sleeve Top

Designed for Stretch Knit Fabrics



----- Create a bell sleeve top in your choice of sleeve lengths, bell shape & necklines



Add a double bell feature

Or keep it plain in short, 1/2, 3/4 or full length sleeves.



BONUS! PLAIN SLEEVE

*See separate file for pattern pieces.

Bonus Plain Sleeve Tee

Designed for Stretch Knit Fabrics

Use the body & necklines from the Allure Bell Sleeve top, create a plain sleeve stretch knit top combining your choice of 5 sleeve lengths & 4 necklines.

4 NECKLINES

We start with a choice of necklines:

Deep or wide scoop. Crew or V-neck.

DEEP SCOOP



3/4 LENGTH

WIDE SCOOP



1/2 LENGTH BELOW ELBOW

CREW



1/2 LENGTH ABOVE ELBOW

V-NECK



SHORT

4 BASE-SLEEVE LENGTHS

Then you choose your base sleeve length: short sleeve, a half sleeve sitting either above or below the elbow & a 3/4 sleeve length.

DEEP SCOOP



LONG SLEEVE

WIDE SCOOP



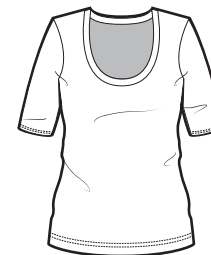
3/4 SLEEVE

V-NECK



BELOW ELBOW 1/2 SLEEVE

DEEP SCOOP



ABOVE ELBOW 1/2 SLEEVE

CREW NECK



SHORT SLEEVE

NECKLINES:

- Deep Scoop
- Wide Scoop
- V-Neck
- Crew Neck

SLEEVE LENGTHS:

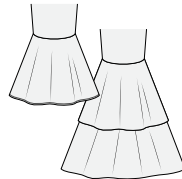
- Short Sleeve
- 1/2 Sleeve (above elbow)
- 1/2 Sleeve (below elbow)
- 3/4 Sleeve
- Long Sleeve

3 BELL STYLES

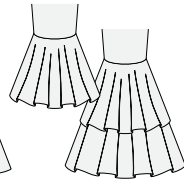
STYLES: Lastly we add the Bell. There are 3 styles to choose from, all with a different flare factor.

- **Classic** has a subtle flare. Great for a small nod to fashion; perfect for a work top.
- **Modern** is a fuller flared bell style. This versatile bell shape works well for casual, chic, day or night & is perfect for layering.
- **Dramatic** is a full circle bell. An awesome statement piece; perfect for a date night top.

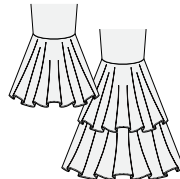
CLASSIC



MODERN



DRAMATIC



LENGTHS: With each style, there are 3 lengths: short, long & x-long.

You can choose to add a single layer bell or double it up by combining multiple lengths.

**PAGE 29
OUTLINES
SLEEVE & BELL
CHOICES**

Need help choosing & working out which Bell's go with which Sleeves? Page 29 outlines these in more detail in an easy to follow table.