

Raingler

NETS & GRIPS

Behind Seat Vertical Barrier

GM Chevrolet Cargo and Express and other cargo vans

NOTE: Many newer models have B-pillar handles and even overhead on the ceiling that can be used for some of the top mounting locations. Check to see if you prefer to use these factory locations as the nets typically have enough adjustment to allow for this option. If your vehicle does not have handles in desired locations or you prefer to install mounting points for better fitment, please follow the below steps.

IMPORTANT: READ INSTRUCTIONS FULLY BEFORE STARTING

Time: 60 - 120 minutes depending on total mounts to be installed



Paw Level:

Tools:

1. Large Torx bits (Typically T-45, T-47 or T-50 are used in these trucks.)
2. Ratchet and possibly an extension for Torx
3. Cordless drill
4. Small drill bits or punch for footman screw pilot hole 5/64" or similar
5. small flat blade and/or panel removal tool for removing access covers and releasing plastic snap digits.
6. Black marker for marking location points on metal panels.
7. Tape measure
8. Patience – be sure to double check each step for clearance to outer body, hidden wiring for dome lights or other vehicle lines and wiring.

Step 1

Check all parts

Pictured is the net laid out, logo on right side. This unit can install face to front or to rear depending on needs. We will show the logo facing the cargo area as it is a bit more accessible to work with buckles and tensioning.



Hardware: You will have hardware similar to this but may vary in the quantity of each part depending on the particular installation. Shown from top left and counter clockwise: D-ring straps (can be different length), chassis (seat bolt) bracket, Toggle nut rod and bolt, black PVC coated steel rings with mount tab and small washers, large fender style washers for under PVC square rings



Raingler
NETS & GRIPS

NOTE: Move seats forward for easiest access.

Step 2

In the side B pillar near the ceiling, look for the fastener access cover and inspect your desired application position. In many cases, panel removal is not needed and you will be able to install the upper mount point D-ring strap or upgraded toggle bolt kit at the double layered metal structure just behind the edge of the headliner.

Image is looking up at double metal B pillar location for easier access mount install.

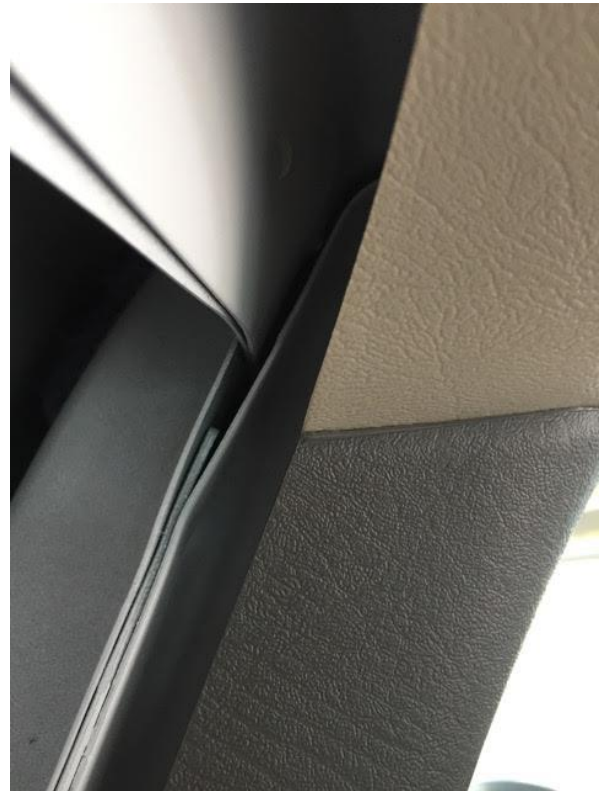


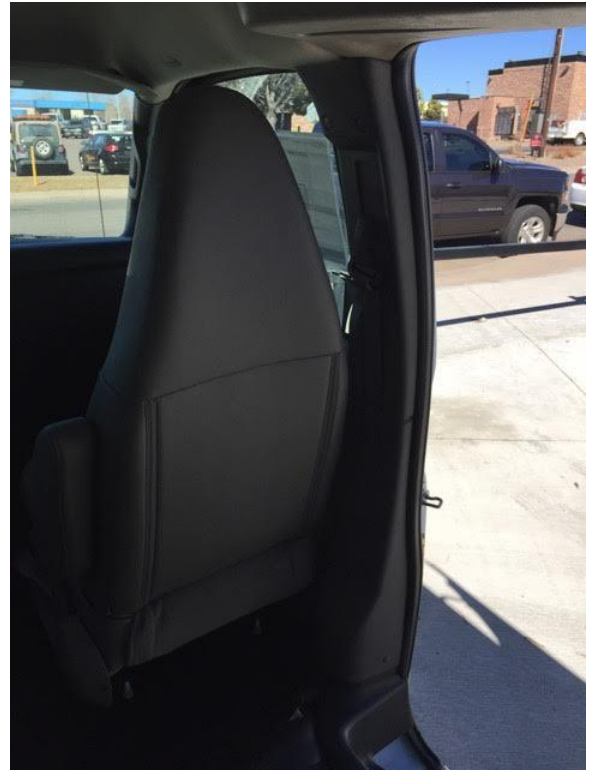
Image of driver side



Raingler
NETS & GRIPS

Image of passenger side

Note: The trim can be deeper and a bit different from driver's side. Look at both sides prior to determining final installation location on strap mounts.



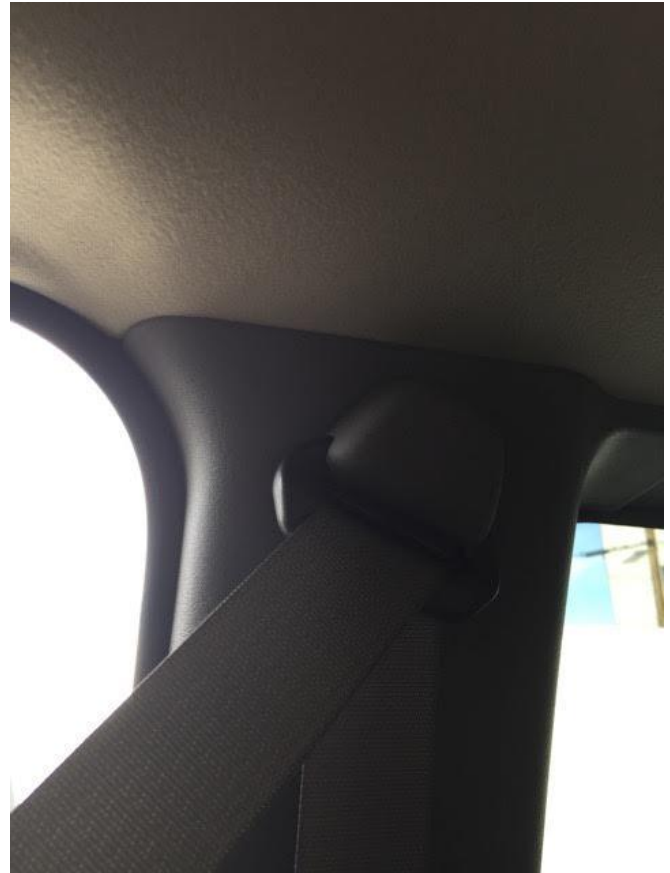
Note: If a closer to final seat location position is desired carefully pop loose and remove two cover caps and possibly the upper seat belt attachment point for access to inner seat structure. It may be necessary to loosen top edge of black rubber weather stripping to allow this panel to pop back for you. Watch that the rubber stripping (to the door opening side of trim panel in IMG below) side of the 2 cover caps drop tar adhesive and handle with care to prevent contact with interior of vehicle. If the seat belt adjuster cover must be removed, it usually does not to achieve enough access to the top of the panel under structure. Some of these adjustor covers can simply be squeezed and then by pulling out released to expose the bolt needed to remove the bolt as shown here. Loosen for enough access to install the D-ring strap as seen at the end of Step 2. below.



Raingler
NETS & GRIPS

Note: Only FOR Rear, 2nd or other rear pillar locations if NOT behind the front seat installation. The cover pops off easily by hand then our C101 Chassis bracket mounts would very well for this type location.

With upper portion of panel dropped down enough to allow access to inner metal support structure, check for any obstructions, clearance issues, wiring or washer lines. Install footman in location shown to allow the strap and D ring access over the top of the reinstalled trim piece and not too high as to impair the headliner material.



Raingler
NETS & GRIPS

Step 3

Reinstall trim and double check that the strap will pull directly inside angled across cabin without distorting headliner or plastic trim piece.



Step 4

Loosen and remove the lower side seal belt anchor for outer lower seat back to floor bolt on the back side of the seat bolt with Torx head. This can be under a plastic cover in some models or even have a OEM toe down under the floor paneling as this van does. Our chassis bracket mount can also be installed to the rear floor seat bracket bolt to the right of the exposed singer D ring.



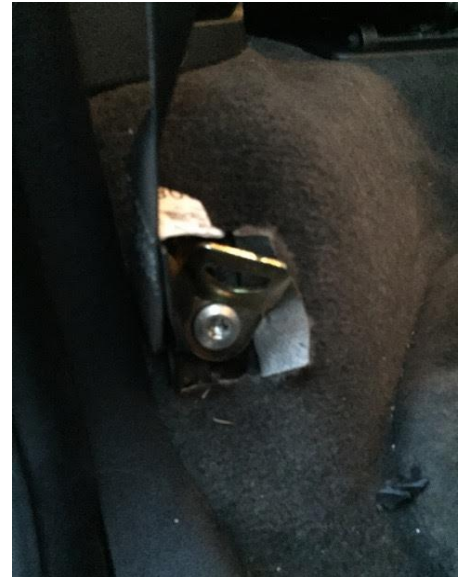
Driver side shown



Step 5

Install floor chassis bracket oriented towards up and center of rear cargo area.

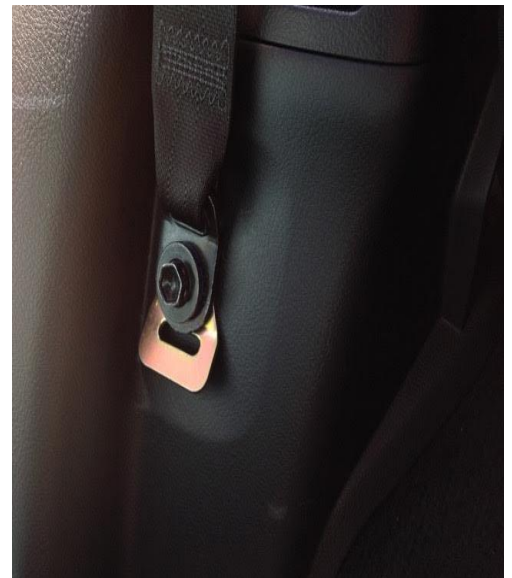
Passenger side floor bracket location



Example of chassis bracket installed



We do carry a wide array of mounts if the OE holes in the image where desired to create a small storage area for drivers behind front seats for first aid or flashlights etc. Our nets are desired to add carbine clips and MOLLE bags for further expandability.



Raingler
NETS & GRIPS

Step 6

Loosely hang and position the top of the barrier, then the lower straps and position seat recline to desired fit before fully tightening.

Wrap and tuck excess length of strap if desired.



Step 7

Lower straps



Raingler
NETS & GRIPS

Step 8

Return seat positions and do final tensioning.

For basic 4-point installation, the procedure is now done. Tie off any extra straps and buckles that you may use for later installation expansions.

If you wish to add more of the mounts please continue using our "PILLAR AND TOGGLE BOLT ASSEMBLY PDF"



Example: The overhead caps will be released and new hardware to affix mounting points.



If you wish to add more mounts they are available in our hardware store.

Check out the video here:
<https://vimeo.com/raingler>



Raingler
NETS & GRIPS

Thank you for purchasing Raingler Nets.
If you have any questions please contact us,
we are here to help!