

# Raingler

## NETS & GRIPS

---

### Behind Rear Seat Barrier Divider Install

### 2010-newer Subaru Outback

NOTE: Many newer models have B-pillar handles and even overhead on the ceiling that can be used for some of the top mounting locations. Check to see if you prefer to use these factory locations as the nets typically have enough adjustment to allow for this option. If your vehicle does not have handles in desired locations or you prefer to install mounting points for better fitment, please follow the below steps.

**IMPORTANT: READ INSTRUCTIONS FULLY BEFORE STARTING**

**Time:** 30 - 45 minutes



**Paw Level:**

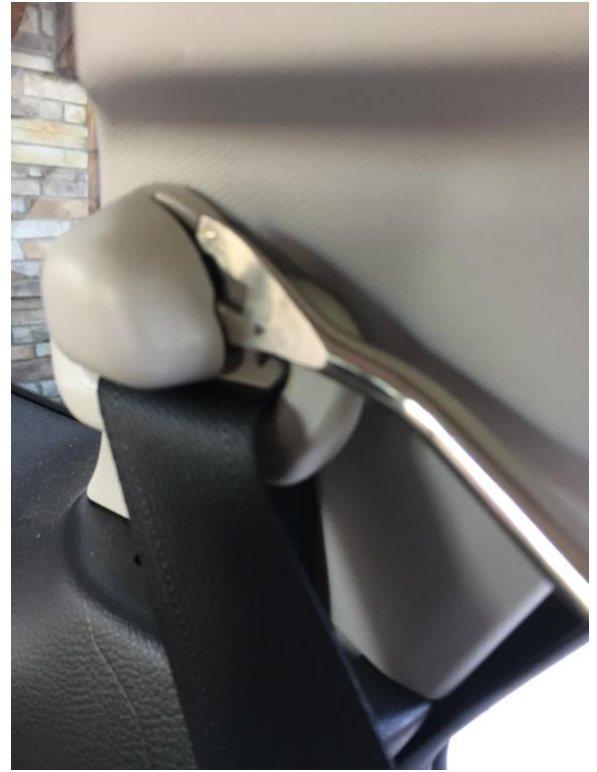
**Tools:**

1. 10mm socket and power driver or ratcheting wrench
2. 16mm wrench
3. Trim or panel removing tool

**2015 – NEWER OUTBACK – SKIP TO STEP 3**

**Step 1**

(2010-2014 only) Carefully pop off the rear shoulder seat belt bolt cover cap. Driver's side shown.



**Step 2**

(2010-2014 only) Remove 16mm bolt holding the upper seat belt slider.



### Step 3

Carefully grasp and pop the top trim cover piece back. It is sometimes helpful to loosen just a bit of the top rubber door surround to make pulling the trim loose a bit easier.

\* **Note** the 10 mm bolt on the silver bracket here for next step.



2015 – newer do not have the 10mm bolt. Install the footman C100 metal piece with 5/64" pilot holes above the round hole in approximate location shown. Proceed to **STEP 7**.



#### Step 4

Remove the 10mm bolt.



#### Step 5

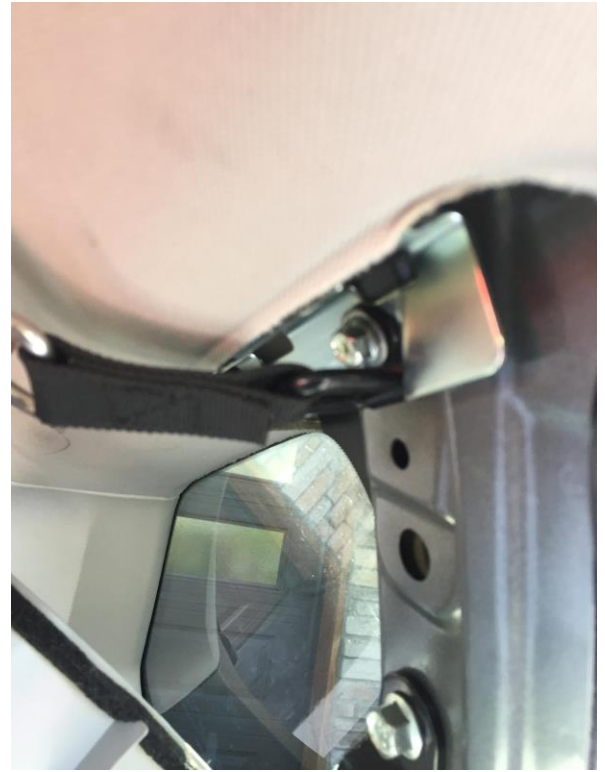
Align the above removed 10mm bolt to the supplied hardware as shown.



**Raingler**  
NETS & GRIPS

### Step 6

Install the hardware d-ring strap with the square ring down and the mount tab, washer and bolt on the top. (the rubber side of the washer faces the mount tab) The D-ring will be extended out and over the top of the reassembled trim panel.



### Step 7

Reinstall the plastic trim piece) and any rubber door surround loosened earlier) with the D-ring going over the top of the trim piece.

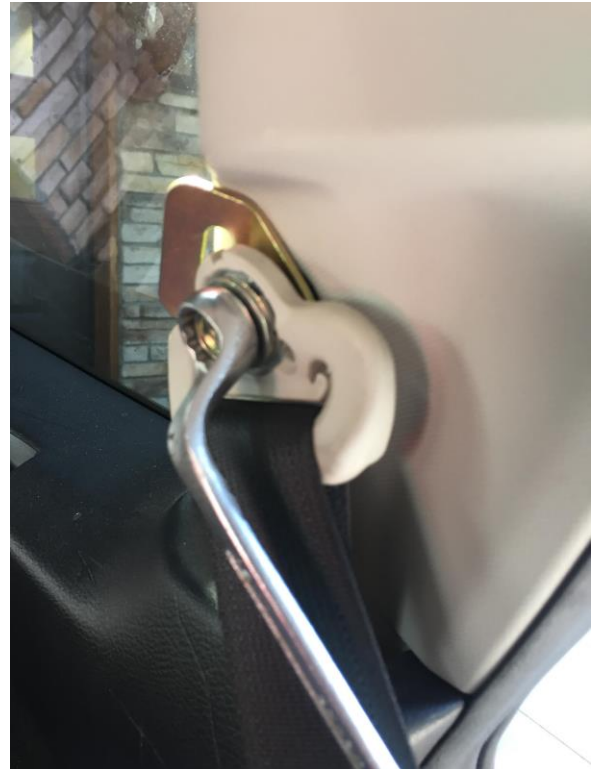
**2015 – NEWER USE THE BLACK FACTORY 2<sup>ND</sup> ROW SEAT CATCH. PROCEED TO STEP 9**



**Raingler**  
NETS & GRIPS

### Step 8

(2010 – 2014 only) Install the chassis bracket oriented to the rear so that the web mount opening is clear and away from the seat belt.



### Step 9

Install the barrier divider from the top D-ring anchor points and tension just the top straps on each side of the vehicle for now. Wrap and tuck excess length of strap if desired.

To see how to wrap and tuck up the excess strap visit our Raingler YouTube channel.



**Raingler**  
NETS & GRIPS

## Step 10

Wrap the lowest strap around the bar at the seat mount, next to the wheel wells inside. DO not fully tension until seat is in final upright position.

This strap can be adjusted depending on whether the back seat is in seated or flat down position.

\*View looking down on driver's side.



\*View from back cargo area view.



**Raingler**  
NETS & GRIPS

## Step 11

(2010 – 2014 only) Install middle side straps to the bracket previously mounted in step 8.



2015 – NEWER USE THE BLACK FACTORY 2<sup>ND</sup> ROW SEAT CATCH



**Raingler**  
NETS & GRIPS





## Step 12

Position seat back into desired position and tension floors straps and then finally side middle straps. Pay attention that no obstructions occur with the seat back, the seat belts or any other trim pieces. Readjust if needed and finally wrap and tuck up the remaining strap ends.

Check out the video here:

<https://vimeo.com/raingler>

**Raingler**  
NETS & GRIPS

Thank you for purchasing Raingler Nets.  
If you have any questions please contact us,  
we are here to help!