

Raingler

NETS & GRIPS

Behind Front Seat Barrier Net Install

2010-Newer Subaru

NOTE: Many newer models have B-pillar handles and even overhead on the ceiling that can be used for some of the top mounting locations. Check to see if you prefer to use these factory locations as the nets typically have enough adjustment to allow for this option. If your vehicle does not have handles in desired locations or you prefer to install mounting points for better fitment, please follow the below steps.

IMPORTANT: READ INSTRUCTIONS FULLY BEFORE STARTING

Time: 30 - 45 minutes



Paw Level:

Tools:

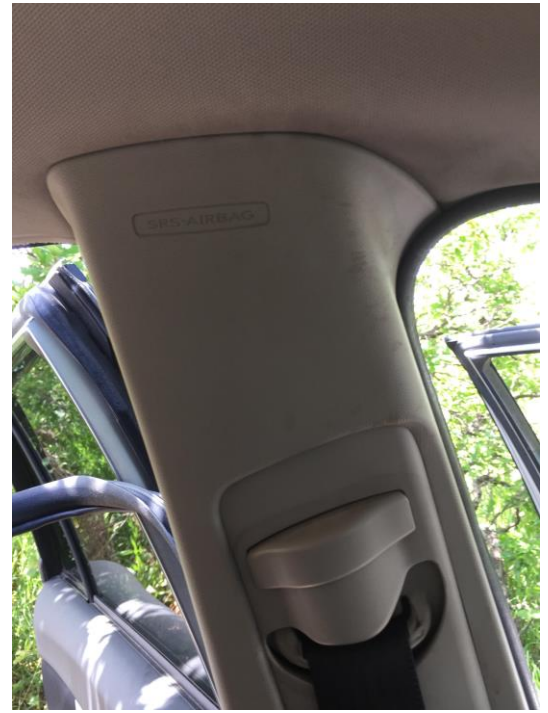
1. 10mm socket
2. Power driver or ratcheting wrench

Step 1

Slide front seats forward out of the way for now. Loosen the rubber weather stripping just at the top corners of the B pillar trim plastic.

Drivers side shown with rear door rubber loosened. Do the same for the front edge.

*Watch that you do not get any tar, if there is any, on your hands or the interior of the car. This 2012 did not have any tar in the weather stripping.



Step 2

Grasp and pop loose the upper portion of the B pillar trim piece. There is one plastic snap-in tab, usually purple or pink. DO not lose the snap-in if it falls. However, if this happens it can simply slide up into the channel on the trim, just behind the double tipped "hook" here. The center "hooks" will pop down enough to clear the headliner but if needed, you could loosen the entire upper section of trim to make this step easier. Do not pull straight out. Pull down a bit and then below the overhead panel. The headliner can also push up to wiggle the trim down and loose. Go slow and be careful.



Step 3

The headliner metal support bracket has three 10mm bolts. The upper rear most one will need to be removed for the mounting strap. A ratcheting box end wrench is helpful here but take care to not crease the headliner foam. The black square end of the mount strap can be seen just behind the silver headliner bracket. Put the 10MM bolt through the black mount tab holes. The strap orients sideways towards the front of the car and the d-ring strap will feed through the opening as shown here on the driver's side pillar.



Raingler
NETS & GRIPS

Step 4

Take care to hold the D-ring up and over as the trim is reinstalled. The plastic snap in must be popped back into the opening for the trim to stay in position. Shown on passenger side here.



Step 5

Install the barrier with the logo facing right side up and tension the top to mount straps to the D-rings previously installed.

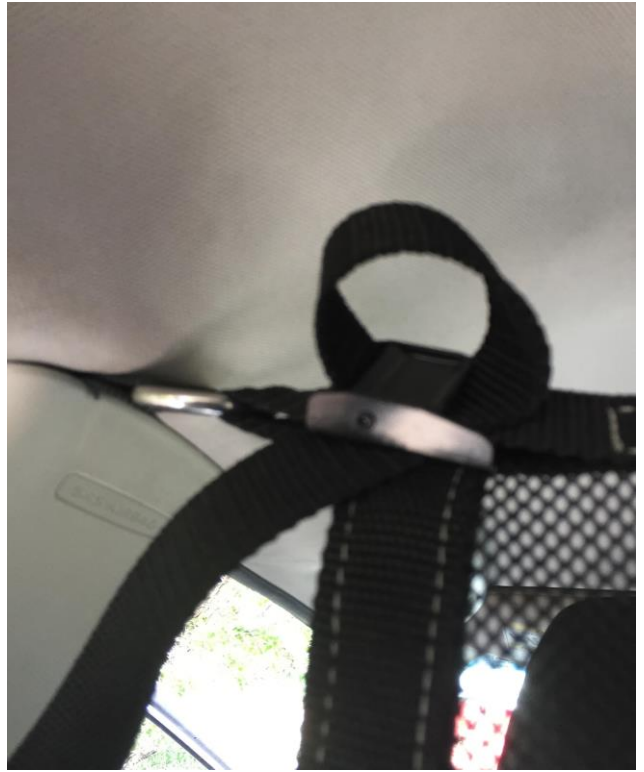


Raingler
NETS & GRIPS

Step 6

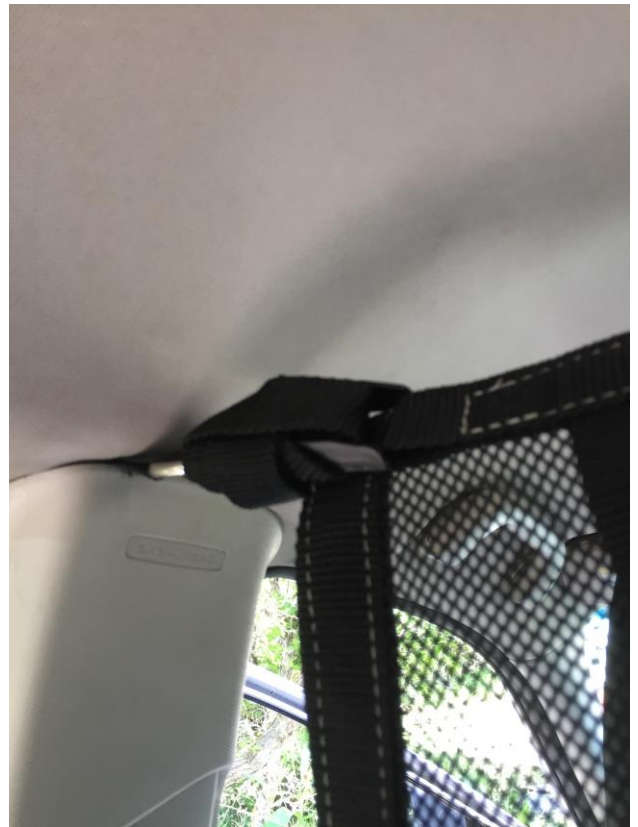
The excess strap can be wrapped and tucked as to not hang simply as shown. Make a loop back into the buckle openings.

To see how to wrap and tuck up the excess strap visit our Raingler channel. <https://vimeo.com/raingler>



Step 7

Wrap around and through the loop to end of strap



Raingler
NETS & GRIPS

Step 8

Feed lowest mount strap under the black floor bracket. Place just the tip through the buckle and return the seats to normal positions. Passenger side shown.



Step 9

Adjust the tension as desired to normal driving seat positions and you are done.



Check out the video here:
<https://vimeo.com/raingler>

Raingler
NETS & GRIPS

Thank you for purchasing Raingler Nets.
If you have any questions please contact us,
we are here to help!