

Raingler

NETS & GRIPS

2020 – Newer Subaru Outback Full Length Ceiling Net Installation

NOTE: Before beginning installation, please look at the installation documents below and make sure that you have the necessary hardware (if any) tools and patience to perform the job. While these are designed as a DIY product some basic automotive and tool experience is helpful. We are here to assist you if you do run into questions too. Please reach out via [email](#) or [text](#) us! Please know that while we supply helpful tips and suggested process, it is up to the installer to make final determination as to installation and the end user regarding use of the product. Vehicles can and are sometimes different than the examples provided so proceed with attention to detail and patience. Now to the fun part, installing your new Raingler Net!

IMPORTANT: READ INSTRUCTIONS FULLY BEFORE STARTING

Time: 2-3 hours



Paw Level:

*While this installation is not particularly difficult, it does require panel disassembly on B, C and D pillars. Attention to detail and care must be taken for a clean, damage-free installation. Only do-it-yourselfers experienced in automotive interior disassembly should perform this installation. Check your service manual for restrictions, but it is usually a good idea to disconnect the battery before beginning work.

Tools:

(may vary by vehicle)

1. 10mm and 14mm sockets and ratchet wrench
2. Panel removal tool
3. Roughly 18" of Cord, twine or similar. A long strip of duct table folded on itself lengthwise can even work.
4. Longer awl or right angle pick
5. Rubber mallet
6. Marker or scribe
7. Cordless drill
8. Small drill bits (11/64" to allow #12 screw to thread)
9. Shop towel to protect plastic trim



Step 1

Slide front seats forward and lower upper seat belt slider down to lowest position for best access. Loosen B pillar weather stripping from edge by pulling off B pillar ridge.



Step 2

Loosen lower trim cover by carefully lifting back top edge back and away from the top piece. This piece can often be done by hand,



or carefully with panel tool as shown.



Once the side is loose, grasp the top edge and wiggle while pulling towards inside cabin to release the nylon clips shown below to expose the 10mm bolt at bottom of upper trim cover.



Step 3

Place a shop towel over top of lower trim piece and lean back out of way from the B pillar.



NOTE! Take care not to move or damage any SRS lines you may come across. See yellow lines at bottom of B pillar trim cover:



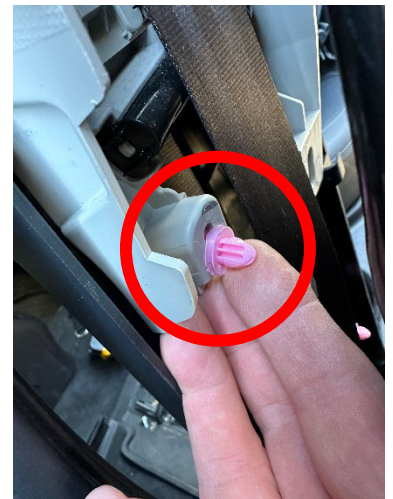
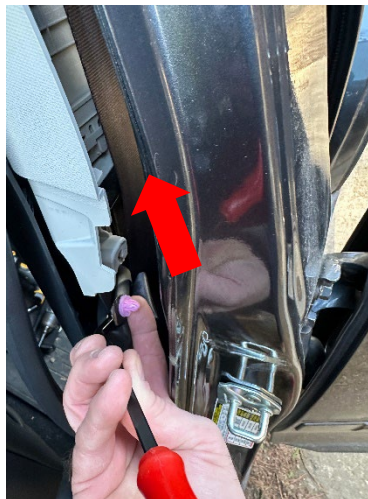
Remove the exposed 10mm bolt.



Looking in from the opening where the weatherstripping was, carefully pop the nylon clip on the lower portion of the upper trim with the panel tool from the front edge.



*If this is not coming out easily, the upper panel can be slid up and then you can remove it and press into slot once panel has been removed in next step.



Step 4

The upper trim cover has an upper center nylon clip and a plastic wedge that slides up into headliner. Similar to the lower cover, wiggle left and right on trim and pop loose. Once the nylon clips are loose, push the upper wedge up and towards middle of cabin to have it drop down into the lower trim piece.



Detail of nylon clip above the upper seat belt 14mm bolt:



Step 5

Remove the 14mm bolt above top of upper seat belt assembly:





Install the hardware (Part C110XL) so the flat side of the tab is next to the inner B pillar and the tether and D-ring is oriented to the headliner. and reinstall the 14mm bolt.

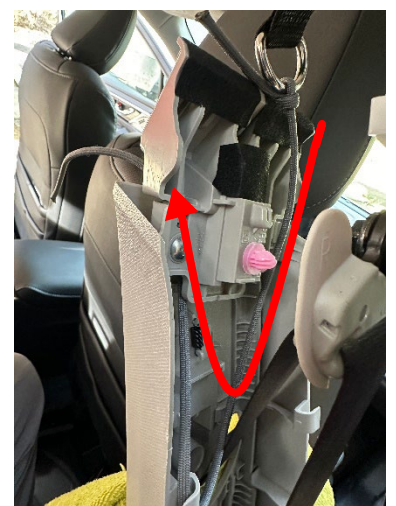
*If the tab tries to rotate as you tighten it, you can slide the tether to the side to keep tension on it while it tightens and then shift up once bolt is tight.



Step 6
Tie your cord to the D-ring:



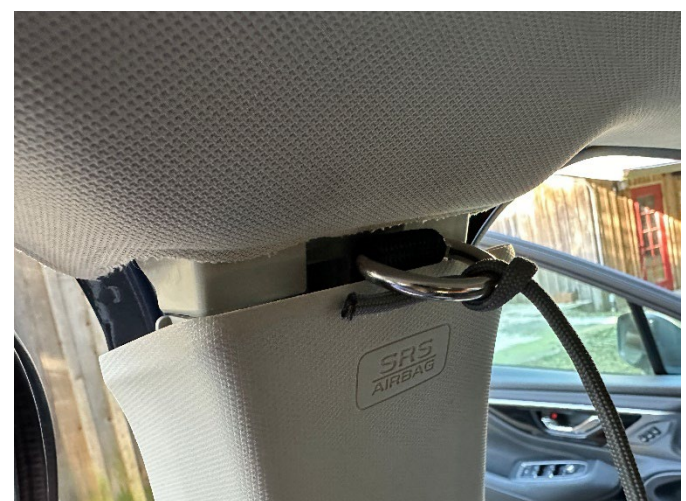
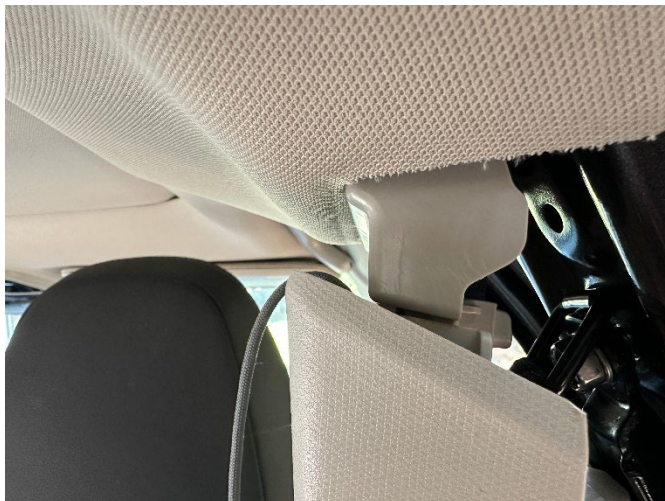
Feed the cord below the plastic piece the nylon clip mounts to and up through the openings between the outer upper trim piece as shown:



Here's a short clip showing the tether routed but not installed to the 14mm bolt (this is where the cord will be used to position):

https://www.dropbox.com/scl/fi/zrlg545bygtig5y6wwwbi/IMG_7491.MOV?rlkey=dp0ylewgerqjxb8e35qm8rzjn&dl=0

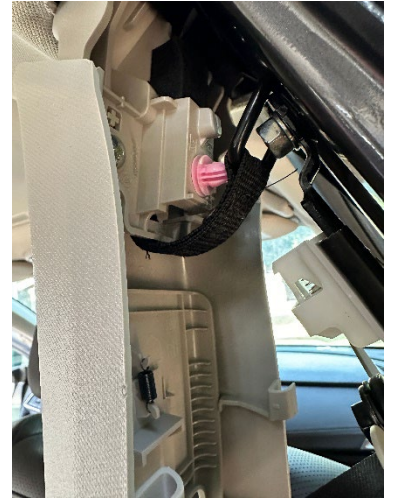
Orient the square ring on the 14mm bolt down at an angle and then while putting the upper trim back on (do not press back into place yet!), pull and work the cord and D ring through and out the top of the opening.



(The trim will raise the nylon clip above the square before it's pressed back into place.)



NOTE! Watch the upper seat belt mechanism (Printed "KNOB B PLR ADJ" beside vertical spring) **BEFORE** pressing trim cover back into place. The trim covers sliding mechanism must sit over the inner B pillar spring assembly (White plastic on left). Also the bolt must insert into the round short tube. Check that the adjuster works fully and that the nylon clip lines up to inner metal hole before pressing trim cover into place.

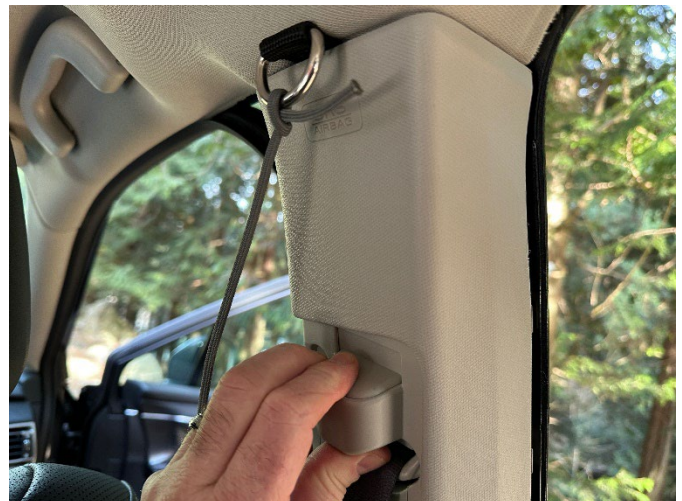


When it's lined up properly, it should be ready to press the upper trim back into position:

Remember the upper wedge will need to be slid up and into position as it was before removal, so that the panel can line up to reinstall.



Step 7
Double check the seat belt adjuster works properly with no binding.



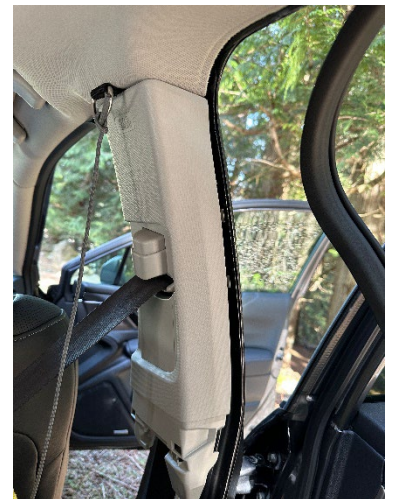
Reinstall the 10mm bolt in bottom of upper trim cover:



Remove cord:



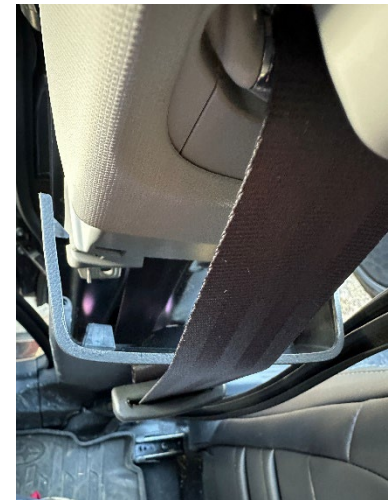
Make sure trim is fully in position and even seated in front and back door openings:



The D-ring should be oriented straight out from the B pillar:



Step 8
Reinstall lower trim cover lining up the two nylon clips and upper two flat prongs.



Press into place and press weather stripping evenly back onto the B pillar ridge:



Step 9
Loosen up top rear doors weatherstripping



From the front top open edge grasp or use the panel removal tool to pull the trim back to release the nylon clips.



View under front edge where weatherstripping was removed:



Top two above quarter window glass pop down:



Watch that the nylon clips do not snag the headliner! Lace the shop towel above the nylon clips to protect the materials.



Step 10

Please watch the video on detail how to install the C100 hardware to assist with the following steps and images before proceeding: <https://vimeo.com/321352161>

This image is looking up at passenger side where the C100M hardware will be mounted. just in front of the nylon clip hole at the top front curve of the window behind the C pillar:

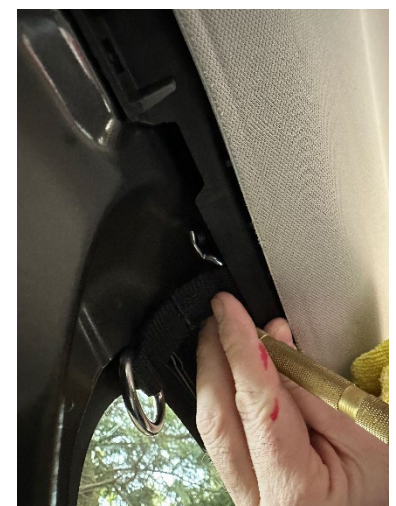
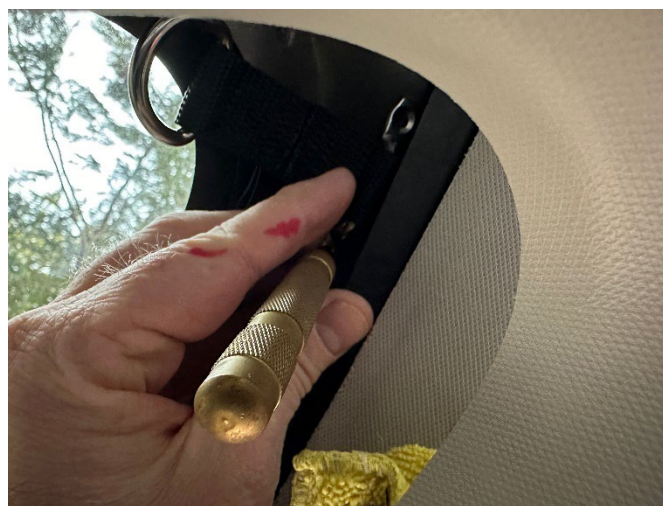


Check depth in area for mounting supplied #12 screws. Testing with a small punch in nylon clip hole by front corner glass:

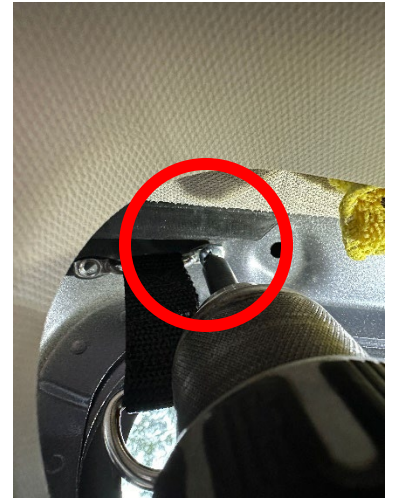
Check twice (and even again), note the angle in relation to the roofline. Be aware of the exterior sheet metal. There is plenty of room if the screen orients straight up in this installation. Triple check in yours before proceeding!



Step 11
Hold the C100M hardware (D-ring, tether and footman bar) in position noting that both mounting holes can sit just behind the curve in top of inner structure surrounding the glass. Can mark inside footman hole or use punch to scribe location for first hole.



Punch a dimple in the location with a rubber hammer. **TAKE EXTREME CARE** that the hammer will not still and strike the window glass. You can drill the hole incrementally as shown in the preceding video until the drill can install the first screw. Do not use excessive force as to strip the screw or snap the screwed off.



Install the second screw in the same manner:



Driver's Side:



Step 12

Make sure that the D-ring stays clear of the trim panel while you reassemble the trim, lining up all of the nylon clips carefully before pushing back into the holes:



Once panel is full seated, line up weatherstripping and press back onto the C pillar ridge so it does not bunch and is neat and flat:

**See notes on step 15 if attempting the faster method to perform before the trim is fully reinstalled here.

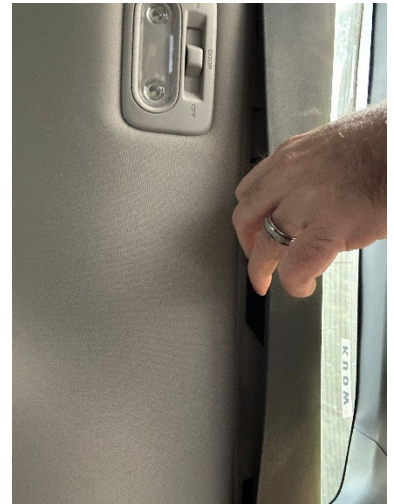


Step 13

From lift gate, pop the center overhead trim piece loose from roof:



Set aside in a safe location.



Step 14

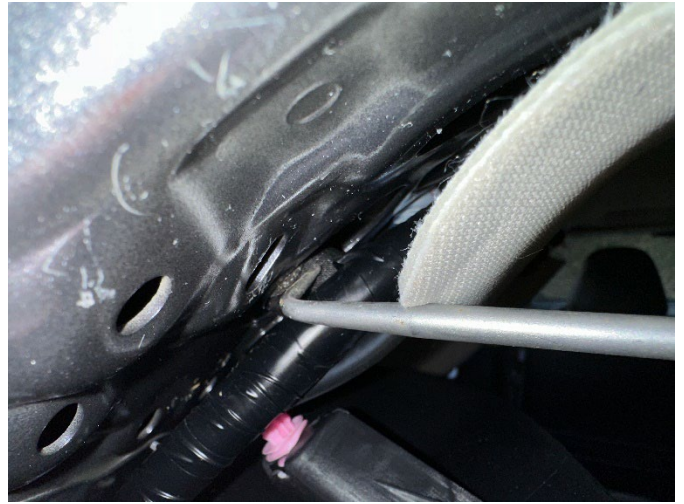
At the top of the rear D pillar covers, there are two vinyl clips. Shown here (Passenger's Side) so you can see locations. DO NOT pry back cover yet.



At rear of trim cover gently pry back enough to see and using panel removal tool, release nylon clip from hole (Driver's Side). Looking past the taped loom, you can see the second nylon clip:



We find it easier to use a right angle awl to slide in and leverage the clip to release. Use care around the lines!



Pop the front edge of the trim loose at the headliner and down on the lower edge. There are plastic channels that the trim simply slides out of pretty easily:

Drop cover piece back a little out of the way.

****NOTE:** This step is possible to do with caution by simply popping the top edge trim at the rear of the glass to insert the C109R hooks into the holes in the pillar. We have detailed the more involved method that may be better to do for a more inexperienced installer.



Step 15

Locate on the front edge of the D pillar by the back edge of the glass, just under the edge of the headliner there are some holes, easier to feel, rather than see:

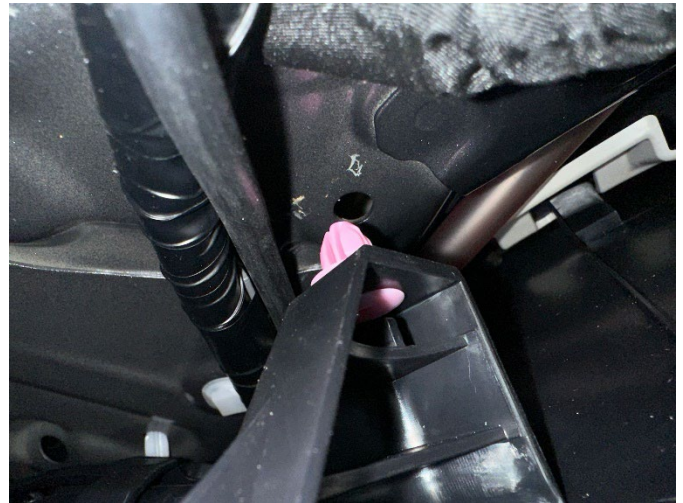




Install the hook of the C109R so that it catches inside the larger hole and orient the D-ring and tether towards the front of the cabin:

Step 16

Make sure that the D-ring and tether stay exposed at top interior of cabin as you line up the cover and nylon clips to press back into respect locations:



Continue with center piece pressing ends into place last:



C and D pillar hardware installed:



Step 17

Time to center and install the net! Start at rear of vehicle and feed strap from corner of net from above and down through the D-ring (this net can orient in either direction as it's a mirror image with strap placement. Longer sides above rear door openings):



NOTE: The back of the net will be above the seat belt strap.



Squeeze tab on buckle and feed tapered strap end from bottom of buckle and through so the cambuckle's teeth hold the webbing. Do not fully tighten any straps until all are connected and the net is best centered side to side. The back of the net lines up just below the center overhead seat belt. A slight bit of touching is ok. Connect the next forward strap to the C pillar/side glass C100M D-ring and then the next to the 2nd row seat overhead handles:



Then the B pillar C100XL D-rings:

Start at the rear of the net and work forward to tension. It is not important for the middle straps line up exactly. The overhead seatbelt should not be restricted and access to the 2nd row seat grab handle straps should be in comfortable positions. Note that sunroof is clear if so equipped.



Step 18

Cover up those buckles! [HERE's a quick and easy video showing how.](#)

Enjoy your newly acquired overhead storage. It should last you many years and all the adventures too.

IMPORTANT: Always secure your gear so that it can't fly forward in a sudden stop. We use carabineers and our own gear hooks and mesh bags to contain stuff and never store something overhead that could be dangerous.



Thank you for purchasing Raingler Nets.
If you have any questions please contact us,
we are here to help!

Raingler
NETS & GRIPS